



Model	Satellite L30-10X	Satellite A200-1CR	Satellite A200-130	Satellite A200-13R	Satellite A200-11C	Satellite A200-10Z	Satellite A200-14D	Satellite A200-14E	Satellite A200-1AE	Satellite A200-10X	Satellite A200-10W	Satellite A200-19L	Satellite A200-1BP	Satellite U200-10H	Satellite P200-140	Satellite P200-10C	Satellite P100-10P								
Processor / Technology	Intel® Celeron® M processor 440 (1.86 GHz, 533 MHz FSB, 1 MB 2nd level cache)	Intel® Pentium® Dual-Core Processor T2080 (1 MB Cache, 1.73 GHz, 533 MHz FSB)	Intel® Centrino® Duo Mobile Technology featuring Intel® Core™ Duo Processor T2350 (2 MB Cache, 1.86 GHz, 533 MHz FSB)	Intel® Centrino® Duo Mobile Technology featuring Intel® Core™ Duo Processor T2350 (2 MB Cache, 2.00 GHz, 533 MHz FSB)	Intel® Centrino® Duo Mobile Technology featuring Intel® Core™ Duo Processor T2350 (2 MB Cache, 1.86 GHz, 533 MHz FSB)	Intel® Centrino® Duo Mobile Technology featuring Intel® Core™ Duo Processor T2350 (2 MB Cache, 1.86 GHz, 533 MHz FSB)	Intel® Centrino® Duo Mobile Technology featuring Intel® Core™ Duo Processor T2350 (2 MB Cache, 2.00 GHz, 533 MHz FSB)	Intel® Centrino® Duo Mobile Technology featuring Intel® Core™ Duo Processor T2350 (2 MB Cache, 1.86 GHz, 533 MHz FSB)	Intel® Centrino® Duo Mobile Technology featuring Intel® Core™ Duo Processor T2350 (2 MB Cache, 1.86 GHz, 533 MHz FSB)	Intel® Centrino® Duo Mobile Technology featuring Intel® Core™ Duo Processor T2350 (2 MB Cache, 1.86 GHz, 533 MHz FSB)	Intel® Centrino® Duo Mobile Technology featuring Intel® Core™ Duo Processor T2350 (2 MB Cache, 1.86 GHz, 533 MHz FSB)	Intel® Centrino® Duo Mobile Technology featuring Intel® Core™ Duo Processor T2350 (2 MB Cache, 1.86 GHz, 533 MHz FSB)	Intel® Centrino® Duo Mobile Technology featuring Intel® Core™ Duo Processor T2350 (2 MB Cache, 1.86 GHz, 533 MHz FSB)	Intel® Centrino® Duo Mobile Technology featuring Intel® Core™ Duo Processor T2350 (2 MB Cache, 1.86 GHz, 533 MHz FSB)	Intel® Centrino® Duo Mobile Technology featuring Intel® Core™ Duo Processor T2350 (2 MB Cache, 1.86 GHz, 533 MHz FSB)	Intel® Pentium® Dual-Core Processor T2080 (1 MB Cache, 1.73 GHz, 533 MHz FSB)	Intel® Centrino® Duo Mobile Technology featuring Intel® Core™ Duo Processor T2350 (2 MB Cache, 2.00 GHz, 533 MHz FSB)	Intel® Centrino® Duo Mobile Technology featuring Intel® Core™ Duo Processor T2350 (2 MB Cache, 2.00 GHz, 533 MHz FSB)							
Operating system	Genuine Microsoft® Windows® Vista™ Home Basic Edition	Genuine Microsoft® Windows® Vista™ Home Basic Edition																							
Display	15.4" WXGA TFT display, resolution 1,280 x 800	15.4" Toshiba TruBrite® WXGA TFT display, resolution 1,280 x 800																							
Hard disk	80 GB (5,400 rpm), Serial ATA	120 GB (5,400 rpm), Serial ATA												160 GB (5,400 rpm), Serial ATA		200 GB (4,200 rpm), Serial ATA		250 GB (4,200 rpm), Serial ATA							
System memory	1,024 (512 + 512) MB, maximum expandability: 2 GB, technology: DDR2 RAM (533 MHz)	1,024 (512 + 512) MB, maximum expandability: 2 GB, technology: DDR2 RAM (667 MHz)		1,024 (512 + 512) MB, maximum expandability: 4 GB, technology: DDR2 RAM (667 MHz)												1,024 MB, maximum expandability: 4 GB, technology: DDR2 RAM (667 MHz)		2,048 (1,024 + 1,024) MB, maximum expandability: 4 GB, technology: DDR2 RAM (667 MHz)		1,024 MB, maximum expandability: 4 GB, technology: DDR2 RAM (533 MHz)		2,048 (1,024 + 1,024) MB, maximum expandability: 4 GB, technology: DDR2 RAM (667 MHz)			
Optical device	DVD Super Multi (Double Layer) drive	DVD Super Multi (Double Layer) drive																							
Graphics adapter	ATI Radeon® Xpress 200M, up to 256 MB VRAM	Intel® GMA 900, up to 256 MB total available graphics memory with 2 GB system memory		Intel® GMA 900, up to 256 MB total available graphics memory with 2 GB system memory												NVIDIA® GeForce™ Go 7300 supporting TurboCache™ technology, 256 MB dedicated VRAM (up to 527 MB total available graphics memory using TurboCache™ technology with 2 GB system memory), DDR Video RAM (resp. DDR Video RAM and DDR system memory combined)		Intel® 945GM Express chipset with Intel® Graphics Media Accelerator 950, up to 128 MB VRAM		Intel® GMA 900, up to 256 MB total available graphics memory with 2 GB system memory		NVIDIA® GeForce™ Go 7600 supporting TurboCache™ technology, 256 MB dedicated VRAM (up to 527 MB total available graphics memory using TurboCache™ technology with 2 GB system memory), DDR Video RAM (resp. DDR Video RAM and DDR system memory combined)		NVIDIA® GeForce™ Go 7900, 512 MB DDR3 RAM	
Pointing device	Touch Pad	Touch Pad																							
Wired & wireless communication	Ethernet LAN, international V90 modem (V92 ready); Wireless LAN (802.11a/g)	Ethernet LAN, international V90 modem (V92 ready); Wireless LAN (802.11a/g)		Ethernet LAN, international V90 modem (V92 ready); Wireless LAN (802.11a/g/Draft-N), Bluetooth® 2.0												Dual Mode Pad		Dual Mode Pad		Touch Pad		Touch Pad			
Sound system	Toshiba Bass Enhanced Sound System, built-in stereo speakers	Toshiba Bass Enhanced Sound System, built-in stereo speakers, volume dial																							
Interfaces	DC-in, external monitor, external microphone, RJ-11, RJ-45, 2 x USB 2.0, headphone	5-in-1 Bridge Media slot (supports SD™ Cards, Memory Stick®, Memory Stick Pro®, MultiMedia Card™, xD-Picture Card™), DC-in, external microphone, external monitor, headphone (stereo), RJ-11, RJ-45, 4 x USB 2.0, LLINK® (IEEE1394), TV-out (s-video)		5-in-1 Bridge Media slot (supports SD™ Cards, Memory Stick®, Memory Stick Pro®, MultiMedia Card™, xD-Picture Card™), DC-in, external microphone, external monitor, headphone (stereo), RJ-11, RJ-45, 4 x USB 2.0, LLINK® (IEEE1394), TV-out (s-video), integrated 1.3 Megapixels Video Camera												Express Card™ slot, 2 memory slots		Express Card™ slot, 2 memory slots		PC Card slot for 1 x Type II card, 2 memory slots		1 PC Card Type II, 2 x memory slots			
Expansion	PC Card slot for 1 x Type II card, 2 memory slots	Express Card™ slot, 2 memory slots		Express Card™ slot, 2 memory slots												Express Card™ slot, 2 memory slots		Express Card™ slot, 2 memory slots		1 PC Card Type II, 2 x memory slots					
Bundled software	Toshiba utilities and drivers, online user and modem manual, Toshiba ConfigFree™, Connectivity Doctor, Toshiba Summi, Toshiba Disc Creator, Toshiba Zooming Utility, Norton Internet Security™ 2007 (includes free Internet updates for 90 days), Ulead® DVD MovieWriter® for Toshiba, Toshiba Value Added Package, Toshiba Bluetooth® Stack, Toshiba Bluetooth® Monitor, Supervisor Password Utility, Toshiba Assist	Toshiba User's Manual, Toshiba ConfigFree™, Connectivity Doctor, InterVideo® WinDVD, Toshiba Disc Creator, Norton Internet Security™ 2007 (includes free Internet updates for 90 days), Ulead® DVD MovieWriter® for Toshiba, Toshiba Value Added Package, Toshiba Bluetooth® Stack, Toshiba Bluetooth® Monitor, Supervisor Password Utility, Toshiba Assist		Toshiba User's Manual, Toshiba ConfigFree™, Connectivity Doctor, InterVideo® WinDVD, Toshiba Disc Creator, Norton Internet Security™ 2007 (includes free Internet updates for 90 days), Ulead® DVD MovieWriter® for Toshiba, Toshiba Value Added Package, Toshiba Bluetooth® Stack, Toshiba Bluetooth® Monitor, Supervisor Password Utility, Toshiba Assist, Toshiba Speech System, Chicony Camera Assistant Software												Toshiba User's Manual, Toshiba ConfigFree™, Connectivity Doctor, InterVideo® WinDVD, Toshiba Disc Creator, Norton Internet Security™ 2007 (includes free Internet updates for 90 days), Ulead® DVD MovieWriter® for Toshiba, Toshiba Value Added Package, Toshiba Bluetooth® Stack, Toshiba Bluetooth® Monitor, Supervisor Password Utility, Toshiba Assist, Toshiba Speech System, Chicony Camera Assistant Software		Toshiba User's Manual, Toshiba ConfigFree™, Connectivity Doctor, InterVideo® WinDVD, Toshiba Disc Creator, Norton Internet Security™ 2007 (includes free Internet updates for 90 days), Ulead® DVD MovieWriter® for Toshiba, Toshiba Value Added Package, Toshiba Bluetooth® Stack, Toshiba Bluetooth® Monitor, Supervisor Password Utility, Toshiba Assist, Toshiba Speech System, Chicony Camera Assistant Software		Toshiba User's Manual, Toshiba ConfigFree™, Connectivity Doctor, InterVideo® WinDVD, Toshiba Disc Creator, Norton Internet Security™ 2007 (includes free Internet updates for 90 days), Ulead® DVD MovieWriter® for Toshiba, Toshiba Value Added Package, Toshiba Bluetooth® Stack, Toshiba Bluetooth® Monitor, Supervisor Password Utility, Toshiba Assist, Toshiba Speech System, Chicony Camera Assistant Software		Toshiba User's Manual, Toshiba ConfigFree™, Connectivity Doctor, InterVideo® WinDVD, Toshiba Disc Creator, Norton Internet Security™ 2007 (includes free Internet updates for 90 days), Ulead® DVD MovieWriter® for Toshiba, Toshiba Value Added Package, Toshiba Bluetooth® Stack, Toshiba Bluetooth® Monitor, Supervisor Password Utility, Toshiba Assist, Toshiba Speech System, Chicony Camera Assistant Software		Toshiba User's Manual, Toshiba ConfigFree™, Connectivity Doctor, InterVideo® WinDVD, Toshiba Disc Creator, Norton Internet Security™ 2007 (includes free Internet updates for 90 days), Ulead® DVD MovieWriter® for Toshiba, Toshiba Value Added Package, Toshiba Bluetooth® Stack, Toshiba Bluetooth® Monitor, Supervisor Password Utility, Toshiba Assist, Toshiba Speech System, Chicony Camera Assistant Software	
Bundled hardware	AC adapter	AC adapter		AC adapter												AC adapter		AC adapter		AC adapter					
Special features	SM BIOS compliant, HD Audio supporting, Multimedia Bar with 6 Easy Keys (Internet Browser, Rewind, Play, Stop, Forward, CD/DVD launcher)	SM BIOS compliant, HD Audio supporting, Multimedia Bar with 6 Easy Keys (Internet Browser, Rewind, Play, Stop, Forward, CD/DVD launcher), integrated microphone for voice over IP, integrated 1.3 Megapixels Video Camera for Video over IP		SM BIOS compliant, HD Audio supporting, Multimedia Bar with 6 Easy Keys (Internet Browser, Rewind, Play, Stop, Forward, CD/DVD launcher), integrated microphone for voice over IP, integrated 1.3 Megapixels Video Camera for Video over IP												SM BIOS compliant, HD Audio supporting, Multimedia Bar with 6 Easy Keys (Internet Browser, Rewind, Play, Stop, Forward, CD/DVD launcher), integrated microphone for voice over IP, integrated 1.3 Megapixels Video Camera for Video over IP		SM BIOS compliant, HD Audio supporting, Multimedia Bar with 6 Easy Keys (Internet Browser, Rewind, Play, Stop, Forward, CD/DVD launcher), integrated microphone for voice over IP, integrated 1.3 Megapixels Video Camera for Video over IP		SM BIOS compliant, HD Audio supporting, Multimedia Bar with 6 Easy Keys (Internet Browser, Rewind, Play, Stop, Forward, CD/DVD launcher), integrated microphone for voice over IP, integrated 1.3 Megapixels Video Camera for Video over IP		Multimedia Bar with 6 Easy Keys (Internet Browser, Rewind, Play, Stop, Forward, CD/DVD launcher), HD Audio supporting, integrated numeric keyboard			
Security features	User password, keyboard lock, main hard disk (by screw), main battery pack (by sliding latch), main memory (by screw), supervisor password, Kensington cable lock, system password security, Kensington cable lock	Main hard disk (by screw), main memory (by screw), main battery pack (by sliding latch), slot for Kensington Cable Lock, BIOS password, supervisor password, user password, system password security, Wireless LAN switch																							
Physical dimensions	W x L x H: 368 x 262 x 37 mm, weight: 2.74 kg	W x L x H: 362 x 267.8 x 33.5 (front) / 39.3 (rear) mm, weight: starting at 2.5 kg																							
Warranty	1-year international warranty. Upgrade your standard warranty with Toshiba warranty extension and uplift packs. Contact your nearest Toshiba Authorised Reseller for details.	1-year international warranty. Upgrade your standard warranty with Toshiba warranty extension and uplift packs. Contact your nearest Toshiba Authorised Reseller for details.																							



Model	Qosmio G30-10B
Processor / Technology	Intel® Centrino® Duo Mobile Technology featuring Intel® Core™ Duo Processor T2350 (2 MB Cache, 1.73 GHz, 533 MHz FSB)
Operating system	Genuine Microsoft® Windows® Vista™ Ultimate Edition
Display	17.0" Toshiba TruBrite® WUXGA TFT display, resolution 1,920 x 1,200
Hard disk	120 GB (5,400 rpm), Serial ATA
System memory	2,048 (1,024 + 1,024) MB, maximum expandability: 4 GB, technology: DDR2 RAM (667 MHz)
Optical device	HD DVD-R drive
Graphics adapter	NVIDIA® GeForce™ Go 7600, 256 MB DDR3 RAM
TV tuner	Hybrid analogue and digital (DVB-T) TV Tuner
Pointing device	Touch Pad
Wired & wireless communication	Gigabit Ethernet LAN, international V90 modem (V92 ready); Wireless LAN (802.11a/b/g), Bluetooth® 2.0
Sound system	Toshiba Bass Enhanced Sound System with SRS® TruSurround XT™ System, built-in Harman Kardov® stereo speakers, volume-dial
Interfaces	5-in-1 Bridge Media slot (supports SD™ Cards, Memory Stick®, Memory Stick Pro®, MultiMedia Card™, xD-Picture Card™), DC-in, external microphone, external monitor, 2 x headphone (stereo), RJ-11, RJ-45, 4 x USB 2.0, LLINK® (IEEE1394), S/PDIF (optical) shared with headphone socket, HDMI-out, IR Blaster-in, IR Blaster-out
Expansion	1 x PC Card Type II, 2 x memory slots, Express Card™ slot
Bundled software	Toshiba utilities and drivers, online user and modem manual, Toshiba ConfigFree™, Connectivity Doctor, Toshiba Summi, Sonic™ Record Now!, InterVideo® WinDVD Creator 2 Platinum, Toshiba Zooming Utility, Norton Internet Security™ 2007 (includes free Internet updates for 90 days)
Bundled hardware	AC adapter, AC power cable, HDMI cable, antenna cable, modem cable, video-in cable, Remote Control for Microsoft® Windows® Vista™ Ultimate Edition and Microsoft® Windows® XP, IR Transmitter cable
Special features	AV buttons (TV button, CD/DVD button, Play/Pause, Stop, Rewind, Forward, Record, Brightness down, Brightness up, Dolby, TV-out, Microsoft® Windows® HotStart™ for instant-on entertainment, RAID 0 and RAID 1 support for data back-up and real-time disk mirroring)
Security features	Keyboard lock, main hard disk (by screw), main memory (by screw), main battery pack (by sliding latch), slot for Kensington Cable Lock, supervisor password, system password security, user password, Wireless LAN switch
Physical dimensions	W x L x H: 406 x 285 x 45.5 (front) / 53.5 (back) mm, weight: starting at 4.6 kg
Warranty	2-year international warranty. Upgrade your standard warranty with Toshiba warranty extension and uplift packs. Contact your nearest Toshiba Authorised Reseller for details.



Model	Satellite Pro A120-10K	Satellite Pro A120-10L	Satellite Pro U200-10I
Processor / Technology	Intel® Pentium® Dual-Core Processor T2080 (1 MB Cache, 1.73 GHz, 533 MHz FSB)	Intel® Centrino® Mobile Technology featuring Intel® Core™ Duo Processor T2350 (2 MB Cache, 1.86 GHz, 533 MHz FSB)	Intel® Centrino® Duo Mobile Technology featuring Intel® Core™ Duo Processor T2350 (2 MB Cache, 1.83 GHz, 667 MHz FSB)
Operating system	Genuine Microsoft® Windows® Vista™ Business		
Display	15.4" WXGA TFT display, resolution 1,280 x 800		12.1" Toshiba TruBrite® WXGA TFT display, resolution 1,280 x 800
Hard disk	120 GB (5,400 rpm), Serial ATA		120 GB (5,400 rpm), Serial ATA
System memory	1,024 MB (512 + 512) MB, maximum expandability: 4 GB, technology: DDR2 RAM (533 MHz)		1,024 MB (512 + 512) MB, maximum expandability: 4 GB, technology: DDR2 RAM (533 MHz)
Optical device	DVD Super Multi (Double Layer) drive		Slim DVD Super Multi (Double Layer) drive
Graphics adapter	Mobile Intel® 945GM Express chipset, up to 128 MB DDR3 RAM		Mobile Intel® 945GM Express chipset, up to 128 MB DDR3 RAM
Pointing device	Touch Pad		Touch Pad
Wired & wireless communication	Gigabit Ethernet LAN, international V90 modem (V92 ready); Wireless LAN (802.11a/b/g)		Ethernet LAN, international V90 modem (V92 ready); Wireless LAN (802.11a/b/g), Bluetooth® 2.0
Sound system	Toshiba Bass Enhanced Sound System, built-in stereo speakers, volume dial		Toshiba Bass Enhanced Sound System with SRS® TruSurround XT™ System and SRS® WOW HD™, built-in stereo speakers, volume dial, built-in microphone
Interfaces	DC-in, external monitor, external microphone, RJ-11, RJ-45, 3 x USB 2.0, LLINK® (IEEE1394), headphone (stereo), SD™ Card slot		DC-in, external monitor, external microphone, RJ-11, RJ-45, 3 x USB 2.0, LLINK® (IEEE1394), headphone (stereo), SD™ Card slot
Expansion	PC Card slot for 1 x Type II card, 2 memory slots		
Bundled software	Toshiba utilities and drivers, online user and modem manual, Management Console, Toshiba ConfigFree™, Connectivity Doctor, Toshiba Summi, Sonic™ Record Now!, InterVideo® WinDVD Creator 2 Platinum, Toshiba Zooming Utility, Norton Internet Security™ 2007 (includes free Internet updates for 90 days)		
Bundled hardware	AC adapter		
Special features	SM BIOS compliant, Toshiba Enhanced SpeedStep, Toshiba Power Saver utility, Toshiba Presentation button, Toshiba Assist button, HD Audio supporting, integrated microphone for VoIP, Multimedia Bar with 6 Easy Keys (Internet Browser, Rewind, Play, Stop, Forward, CD/DVD launcher)		
Security features	BIOS password, HDD password on request, keyboard lock, main hard disk (by screw), main memory (by screw), supervisor password, system password security, user password		BIOS password, keyboard lock, main hard disk (by screw), main memory (by screw), supervisor password, system password security, user password, Wireless LAN switch, slot for Kensington Cable Lock
Physical dimensions	W x L x H: 368 x 266 x 29.8 (front) / 36.9 (back) mm, weight: 2.9 kg		W x L x H: 299 x 225 x 34.0 (front) / 34.8 (back) mm, weight: 1.86 kg
Warranty	2-year international warranty. Upgrade your standard warranty with Toshiba warranty extension and uplift packs. Contact your nearest Toshiba Authorised Reseller for details.		



CPU performance may vary from specifications under certain conditions such as the use of battery instead of AC power, certain external peripherals, certain multimedia applications or network connections, complex modeling software and in areas with low air pressure at high altitude (1,000 metres above sea level) and/or certain temperatures. CPU performance may also vary from specifications due to design configuration. Under some conditions, your computer may automatically shut down as a normal protective measure. To avoid risk of lost data, please make periodic back-up copies. For optimum performance, use your computer only under recommended conditions. Please read detailed restrictions in the product resource guide, visit the Toshiba web site: computers.toshiba-europe.com

* Technical support. • One GB means one billion bytes, accessible capacity may be less. • Wireless and wireless communication capabilities to be applied in countries where applicable. • Battery life may vary depending on usage. Battery charge time varies depending on usage. • Weight may vary depending on product configuration, vendor components, manufacturing variability and options selected. • SRS® TruSurround XT™ is only available for WinDVD applications. SRS® WOW™ is only available for Windows Media Player 9 in standard Windows interface. Please check your system specifications to ensure optimal results. • Wi-Fi and/or Bluetooth® to be applied in countries where approved. For further information contact your Toshiba Authorised Reseller. • Certain notebook chassis are designed to accommodate all possible configurations for an entire product series. Your selected model may not have all the features and specifications corresponding to all of the icons or switches shown on the notebook chassis.



Toshiba Options and Accessories Compatibility Table

PA number	Description	Satellite L30	Satellite U200	Satellite A200	Satellite P100	Satellite P200	Satellite Pro A120	Satellite Pro U200
POWER								
PA3516E-1AC3	AC Adapter – 15 V DC, 6 A, 90 W							
PA3377E-2ACA	AC Adapter – 15 V DC, 4 A, 60 W (75 W peak), 3-pin							
PA3378E-3AC3	AC Adapter – 15 V DC, 5 A, 75 W (90 W peak), 3-pin							
PA3507E-1AC3	AC Adapter – 15 V DC, 8 A, 120 W 3-Pin							
PA3237E-3AC3	AC Adapter – 15 V DC, 8 A, 120 W							
PA3467E-1AC3	AC Adapter – 19 V DV, 3.42 A, 65 W 3-Pin							
PA3290E-3AC3	AC Adapter – 19 V DC, 6.3 A, 120 W							
PX1323E-1NPO	Notebook Car Adapter – 75 W, 15 V, 5 A							
PX1237E-1NPO	Notebook Car Adapter – 120 W, 15 V, 8 A							
PA3285U-3BRS	Battery – Li-Ion, 6 cell, 4,400 mAh							
PA3476U-1BRS	Battery – Li-Ion, 6 Cell, 4,700 mAh							
PA3356U-3BRS	Battery – Li-Ion, 6 Cell, 4,700 mAh							
PA3506U-1BRS	Battery – Li-Ion, 8 Cell, 4,000 mAh							
PA3480U-1BRS	Battery – Li-Ion, 9 Cell, 6,000 mAh							
PA3475U-1BRS	Battery – Li-Ion, 9 Cell, 7,050 mAh							
PA3533U-1BRS	Battery Pack – Li-Ion, 3 Cell							
PA3534U-1BRS	Battery Pack – Li-Ion, 6 Cell							
PA3537U-1BRS	Battery Pack – Li-Ion, 9 Cell							
PA3535U-1BRS	Battery Pack – Li-Ion, 9 Cell							
PA3091E-2CHG	Battery Charger – 2 batteries supported							
DRIVES								
PA3109E-3FDD	External USB FDD – 1.44 MB							
PA3454U-1DV2	External DVD Super Multi Drive – USB 2.0 – Bus powered							
PA3438U-2CD2	External CD-RW/DVD-ROM Drive – USB powered							
MEMORY EXPANSION								
PA3412U-2M51	512 MB Memory PC2-4300 DDR2 (533 MHz)							
PA3411U-2M1G	1 GB Memory PC2-4300 DDR2 (533 MHz)							
PA3511U-1M51	512 MB Memory PC2 DDR2 (667 MHz)							
PA3512U-1M1G	1 GB Memory PC2 DDR2 (667 MHz)							
PA3513U-1M2G	2 GB Memory PC2 DDR2 (667 MHz)							
CONNECTIVITY								
PX1173E-1PRP	USB 2.0 Port Replicator II (EU) with Network port							
CARRY CASES								
PX1181E-1NCA	Carry Case – Value Edition							
PX1183E-1NCA	Business Case							
PX1182E-1NCA	Advanced Business Case (with trolley belt)							
PX1196E-1NCA	Business Traveller Trolley Case							
PX1187E-1NCA	17" XXL Case							
PX1186E-1NCA	Leather Case							
PX1328E-1NCA	Classic Case							
PX1184E-1NCA	Backpack black							
see price list	Backpack – New Fashion Line (various colors)							
see price list	Messenger Bag (various colors)							
DESK BASED								
PX1172E-1NAC	Kensington Micro Saver							
PX1324E-1NAC	USB Optical Mouse							
PX1326E-1NAC	RF Laser Mouse							
PX1342E-1CAM	USB Webcam							
PA3555E-1ETC	USB Data Link							
PX1263E-1M2G	USB Memory 2 GB							
PX1318E-1NCA	SD card 2 GB							

Toshiba is the best choice for advanced mobile computing.

Toshiba's unique heritage has grown from a single-minded dedication to these core brand values. Together, they have provided the building blocks for true product leadership over the past 20 years and will continue to drive Toshiba's vision of the ubiquitous networked society for years to come.

Best-in-class quality Unsurpassed innovation Trend-setting design

Toshiba sets the standard for delivering reliable, high-quality products. After 20 years of leadership in mobile computing, Toshiba offers unrivalled manufacturing experience and in-depth product knowledge, enabling customers to choose Toshiba with complete confidence. Our component testing programmes incorporate the most stringent quality control checks. Toshiba's commitment to quality also extends to impeccable customer service and long-term product support.

Toshiba's success is anchored by a proven ability to develop cutting-edge technologies. Systems developed by Toshiba lie at the heart of many notebooks on the market today. Over the past 20 years, industry breakthroughs have included the first notebook to feature onboard wireless connectivity and the development of the lithium-ion battery. More recent Toshiba innovations are revolutionising digital convergence. Unprecedented R&D investment will ensure advances for years to come.

Toshiba has a long heritage of delivering award-winning design. All Toshiba systems are created by in-house designers and Toshiba products regularly win prestigious international design and technology awards. Everything we do is about combining style with maximum functionality. User-friendly features combine effortlessly with ultra-lightweight cases and compact dimensions. These are status symbol notebooks, a pleasure to own and to be seen with.

TEG April 2007 A1: No. EN-DB_NIB_ProductGuide_Apr07. Microsoft, Windows and Windows Vista are either registered trademarks or trademarks of Microsoft Corporation in the United States and/or other countries. All trademarks are acknowledged. Product design specifications and colours are subject to change without notice and may vary from those shown. Errors and omissions excepted. adidas and the 3-Stripes logo are registered trade marks of the adidas Group. Used with permission. Teamgeist is a trade mark of the adidas Group. Used with permission.

PRODUCT GUIDE

See inside for the Toshiba range of mobile solutions and options.

April 2007



TOSHIBA

Leading Innovation >>>

Go online at: computers.toshiba-europe.com

Find out more: For further information please contact your nearest Toshiba Authorised Reseller.

Go online at: computers.toshiba-europe.com

Find out more: For further information please contact your nearest Toshiba Authorised Reseller.

SATELLITE L30

Discover a world of easy mobility.

- Enter the world of mobile computing with a notebook featuring pure, modern design plus a 15.4" WXGA widescreen display
- Powered by an Intel® Celeron® M processor for the perfect balance between proven mobile processing technology and exceptional value
- Features enhanced multimedia performance courtesy of the highly versatile ATI Radeon® Xpress 200M chipset
- Enjoy mobile multimedia and watch DVDs on the go thanks to the integrated DVD Super Multi (Double Layer) drive supporting recordable double layer DVDs that can store up to 8.5 GB of data
- Benefit from extended connectivity with Wireless LAN, Ethernet LAN, V.90 modem (V.92 ready) and Toshiba ConfigFree™ for easy management of wired and wireless network connections

SATELLITE P100

Enjoy video and audio performance at its best.

- Enjoy breakthrough entertainment thanks to the Intel® Core™2 Duo Processor with its enhanced multitasking capabilities and future-proof 64-bit technology
- Discover superlative multimedia and digital entertainment on the widescreen 17-inch Toshiba TruBrite® WSXGA+ display, plus latest NVIDIA® GeForce Go 7900 graphics chipset, HD to go for high-definition content viewing and DVI-D port to display HD digital content on an external monitor
- Experience exciting enhancements for music and entertainment with SRS® surround sound technology backed by Harman Kardon® stereo speakers
- Choose a powerful multimedia experience in an elegant, dynamic sunlight-copper design, featuring an integrated numeric keypad for convenient number input
- Get all the connections you need with Ethernet LAN, Wireless LAN, Bluetooth® 2.0, a 5-in-1 Bridge Media adapter and more
- Share the best in mobile TV and entertainment thanks to the built-in TV tuner with

QOSMIO G30

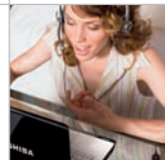
Qosmio – The world's smartest entertainer.

- Qosmio brings together high-quality TV, HD DVD player & HD DVD/HDD recorder, superlative audio and powerful mobile computing to create the perfect 4-in-1 digital entertainment system
- Be amazed by the rich, powerful listening experience enabled by the 1-bit digital amplifier for high-fidelity audio, plus Dolby® Home Theater™ surround sound and Harman Kardon® stereo speakers with bass-reflex speaker technology
- Get the all-in-one convenience of instant digital entertainment with AV control buttons, Microsoft® Windows® Vista™ Ultimate and the convenient remote control
- analogue and digital support, the brilliant 17" Toshiba TruBrite® display and the integrated HD DVD-R drive to give you read and write support for high-definition DVD content
- Designed for every day's business challenges including improved chassis design for easier serviceability
- Get the most from your investment with a notebook design that has undergone intensive testing using HALT (Highly Accelerated Life Testing) to ensure a long-term reliability

SATELLITE PRO A120

Putting quality first for carefree mobility.

- Best product quality with enhanced Toshiba EasyGuard features and improved product design, including protection of HDD and LCD as well as stronger LCD display hinge and more robust keyboard
- Enjoy carefree mobility with a reliable combination of built-in wired and wireless network technologies, and Toshiba ConfigFree™ software enabling easy, seamless connectivity



SATELLITE A200

15.4" versatile all-rounder.

- Tackle your daily challenges with powerful processor performance, easy-to-use wireless connectivity and the Toshiba webcam* for the immediacy of face-to-face video calling wherever you are. Get unrivalled movie playback and multimedia performance thanks to a state-of-the-art NVIDIA® graphics chipset*. Whatever you want – choose the Satellite A200 and get the right notebook for today's digital lifestyle.
- First-class entertainment
 - Enjoy innovative mobile entertainment thanks to Toshiba TruBrite® display technology and state-of-the-art graphics* for the thrill of award-winning games, the movies you love and more.
- Trend-setting design
 - Set the trend in mobile design with this stylish and affordably-priced notebook, featuring a sleek profile, glossy onyx-blue casing and numerous eye-catching design elements.

- Perfect ease-of-use
 - Experience intuitive computing with features such as Toshiba Easy Keys for instant-on multimedia entertainment and improved efficiency.

SATELLITE P200

17" personal entertainment center.

- You can have it all: a mobile gaming solution, an absolutely riveting movie-watching experience, great music and real-time video calls with family and friends. Packed with innovative multimedia technologies, this stunning 17" widescreen notebook features Toshiba TruBrite® technology for life-like video realism and Toshiba Easy Keys for instant-on entertainment. An integrated webcam as well as Harman Kardon® * speakers and state-of-the-art NVIDIA® graphics chipset* complete the picture. Get ready for total excitement with the best in entertainment.
- a breathtakingly fashionable notebook that perfectly expresses your mobile style.

- Pure excitement
 - Get the ultimate in movies and gaming with amazing 17" widescreen performance and Toshiba TruBrite® technology for astonishingly life-like video images.

- Communicate your way
 - Keep in touch with family and friends thanks to a wide choice of connectivity features, including the Toshiba webcam and a high-quality microphone for real-time voice and video calling.



SATELLITE/SATELLITE PRO U200

Ultra-portable notebook for everyone.

- "All-in-one" ultra-portable for every minute of your life, thanks to the Intel® Core™2 Duo Processor with its enhanced multitasking capabilities and future-proof 64-bit technology and up to 5 hours of independent use
- Enjoy DVD at your fingertips combined with SRS® TruSurround XT™ and WOW HD™, or archive data on DVD anywhere and anytime with the integrated slim DVD Super Multi (Double Layer) drive
- Enables easy, seamless connectivity thanks to Toshiba's unique ConfigFree™ software, Wireless LAN, Ethernet LAN and VoIP capability
- 12.1" WXGA Toshiba TruBrite® display offers a superior viewing experience with



- exceptional contrast and brightness, plus a convenient widescreen format for daily business applications

Go online at: computers.toshiba-europe.com

Find out more: For further information please contact your nearest Toshiba Authorised Reseller.

Go online at: computers.toshiba-europe.com

Find out more: For further information please contact your nearest Toshiba Authorised Reseller.