

Quick Start Guide

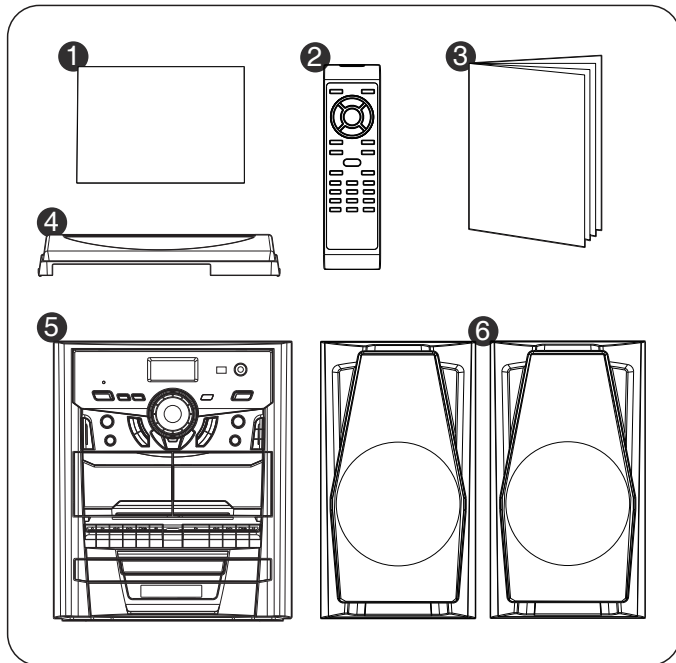
STEREO 3CD MINI HI-FI SYSTEM WITH PLL RADIO CASSETTE AND TURNTBLE

MODEL : HF-636P

Thank you for choosing this audio device.

A Contents of the box

Unpack all parts and remove protective material.
Checking the supplied accessories

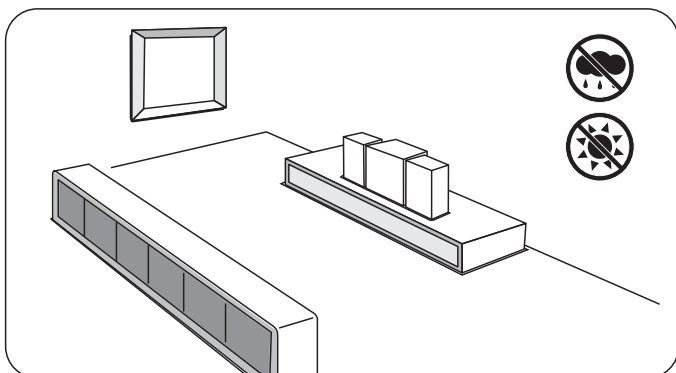


- 1 Quick Start Guide
- 2 Remote Control
- 3 Manual
- 4 Plastic Cover Bracket
- 5 Main Unit
- 6 2 speakers

B Placement

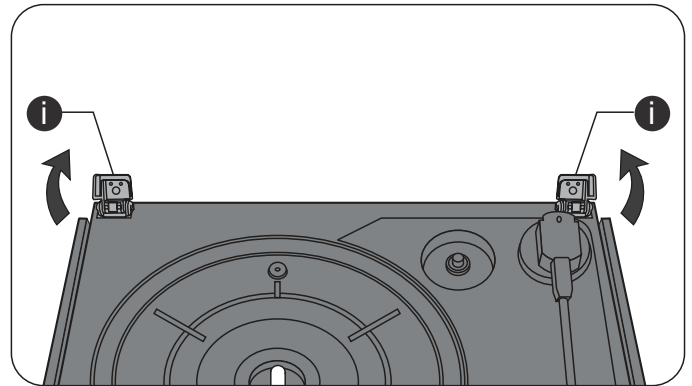
To reduce the risk of fire or electric shock, do not expose this appliance to rain or moisture.

Do not cover any vents and make sure that there is a space of several centimeters around the unit for ventilation.

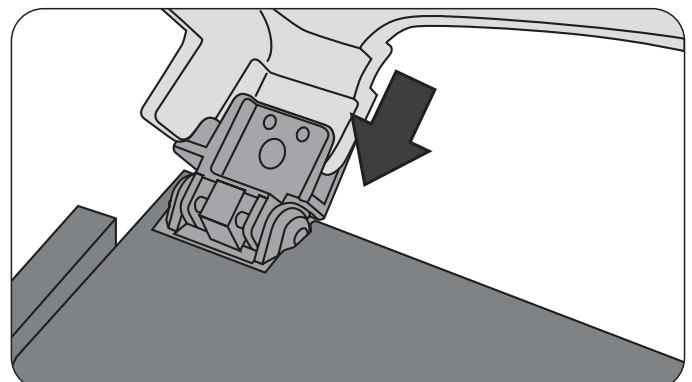
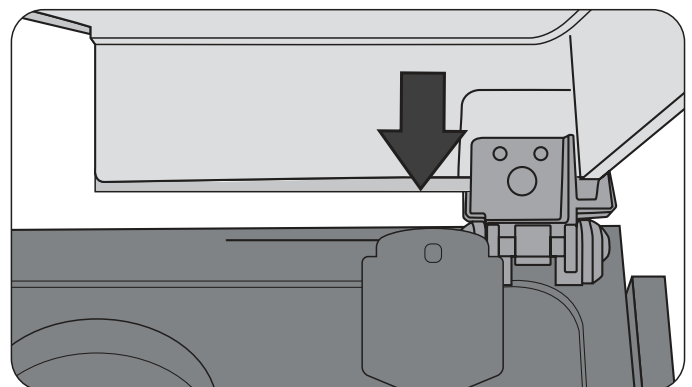
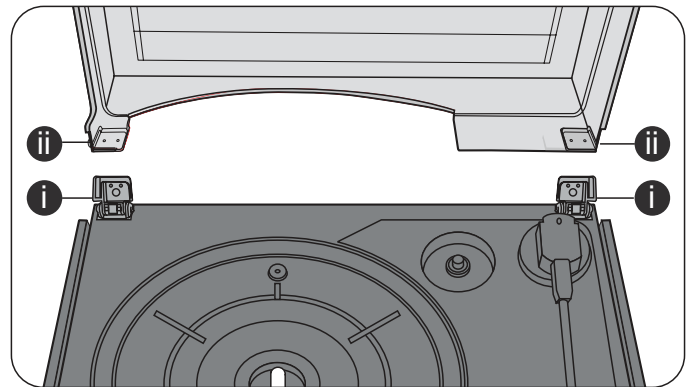


C Mounting the lid

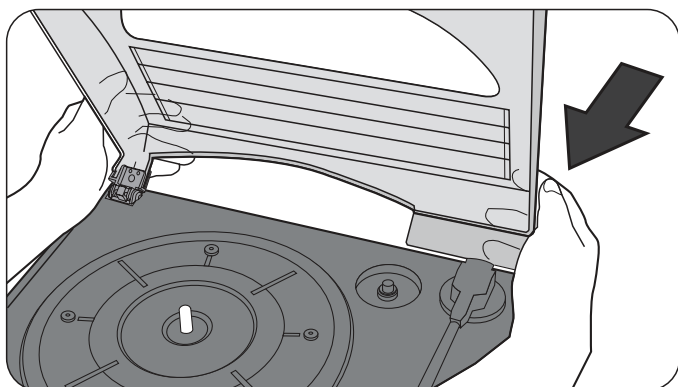
Push both turntable deck Hinges (i) backwards .



Insert the Plastic Cover Bracket (ii) into the black Hinge Slots (i) .



Push them down firmly into the hinges to complete the installation.

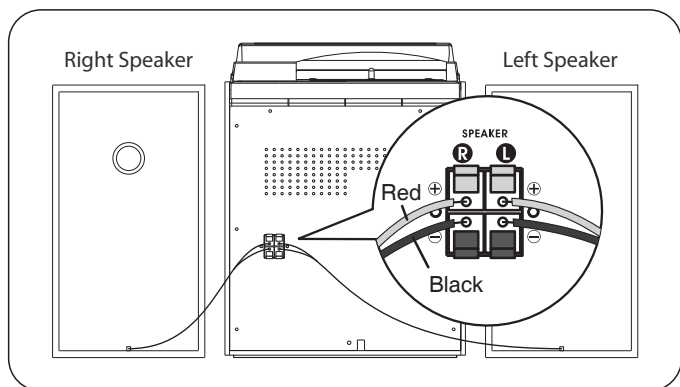


D Speaker connection

Insert the speaker cable ends (exposed wires) into the terminals located on the back of the main unit by pushing down the lever of the left speaker terminal and then the right speaker terminal.

Connect the left speaker to the left speaker terminals with the red wire to L+ and the black wire to L -.

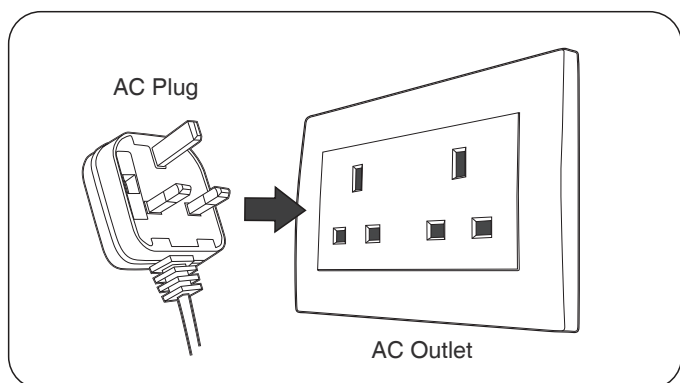
Connect the right speaker to the right speaker terminals with the red wire to R+ and the black wire to R -.



NOTE: Make sure that the power is turned off when connecting or disconnecting the speakers. Make sure that the speakers are connected to the correct terminals.

E Connecting the AC power cord

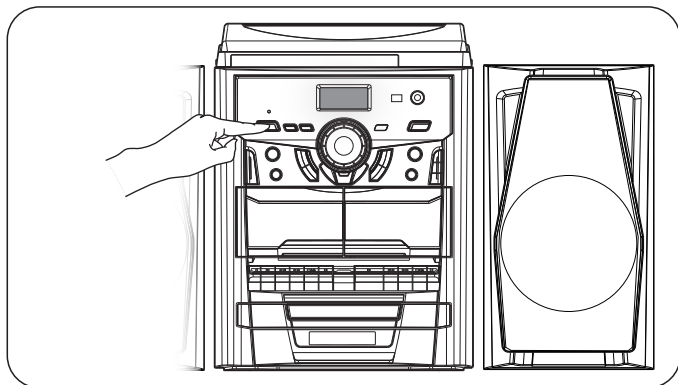
After connecting the speakers unwind the AC power cord fully and connect it to any convenient household 230V ~ 50Hz AC outlet. To prevent electric shock, match wide blade of plug to wide slot. Fully insert the plug to main power socket.



NOTE: The product is designed to operate on normal 230V ~ 50Hz AC only. Connecting this system to any other power supply could result in damage to the unit.

F Turn on the power

Press down the "ON/STANDBY Button" to turn the system on. If the LCD display is on with backlighting, it means the power supply is normal. Now the system is ready to play the music.



G Read the user manual

Please read the user manual completely before operating this unit.

IMPORTANT PRODUCT INFORMATION

If you find your unit switches itself off regularly, this is not a fault. Due to the ErP Stage 2 requirements below for power saving measures, a unit which is connected to the mains power will switch itself off automatically if no music has been playing for over 15 minutes.

Switch the unit OFF and after 5 seconds to ON again to re-activate it.

ErP2 – NEW EUROPEAN DIRECTIVE – FROM JANUARY 2013

The Energy - related Products Directive **ErP2** impacts all energy-related products sold within the EU.

To improve energy efficiency and environmental protection, the ErP2 Directive, which is a European legislation as part of CE marking, applies to products that affect energy consumption during use.

From January 2013 this Directive requires Manufacturers and / or Importers to offer products designed to reduce their overall impact on the environment, including the resources consumed during use, manufacture and disposal.