

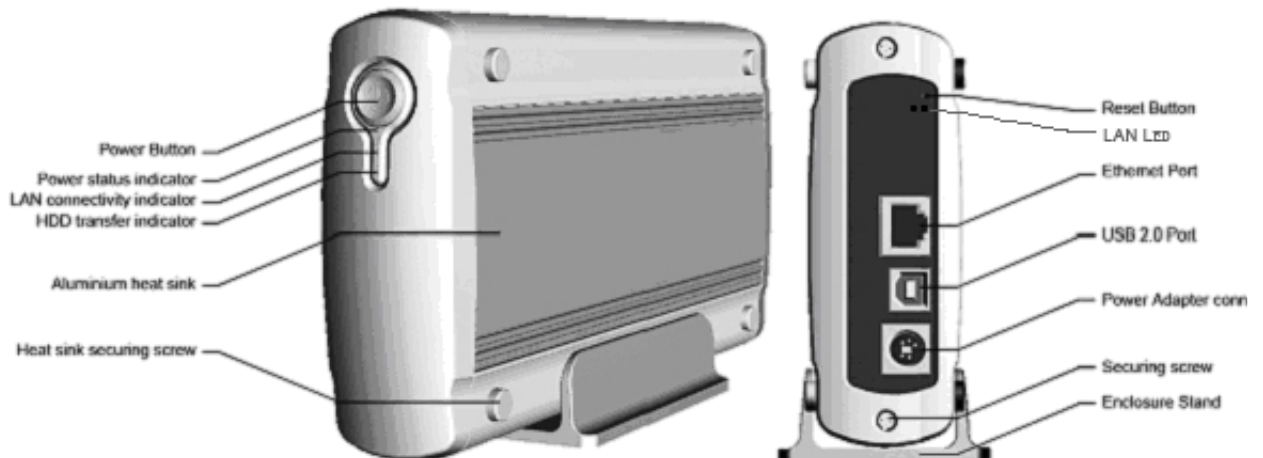


User Manual & Installation Guide

Overview

The LanDrive enclosure adds the convenience of network-attached storage to homes and in small businesses, providing you a central storage location for your data and letting you share data across your network.

At the first glance



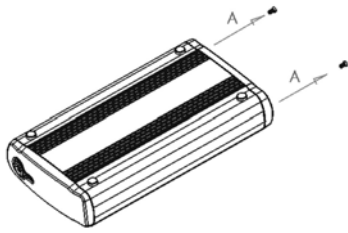
What's in the Package

- ⌘ LanDrive main unit
- ⌘ LanDrive vertical stand
- ⌘ Securing screws
- ⌘ Network cable (Optional)
- ⌘ USB cable
- ⌘ Power Adapter
- ⌘ User Guide

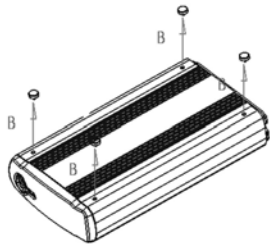
Minimum System Requirements

- ⌘ Apple Safari; Linux Mozilla; Internet Explorer 5.x; Netscape 6.2.x & up
- ⌘ Windows XP/2000/Me/98se, Mac OS 10.3.x or above, Linux
- ⌘ 3.5" IDE UMDA or SATA Hard drive formatted to FAT32 format

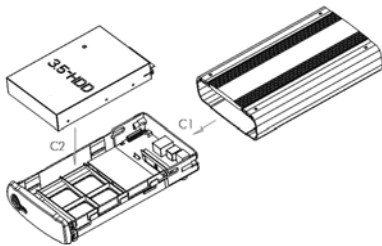
Hardware Installation



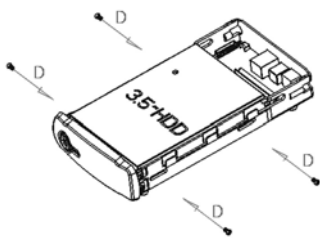
- A. Remove the two screws on the back of the enclosure with a Philips screwdriver.



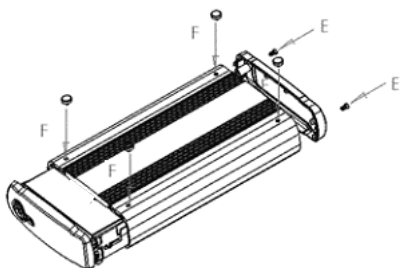
- B. Loosen the four screws on the surface of the unit. These screws will be used later to minimize the gap between the heat sink and your hard drive.



- C. The plastic bracket should slide out effortlessly. Insert your hard drive, connect the IDE or SATA cable and the power cable from the enclosure accordingly. Please ensure that your hard drive jumper setting is configured at Master.



- D. Secure your hard drive to the bracket with the four screws that are included in the package.



- E. Reverse the procedure by re-inserting the bracket to the aluminum casing and
F. securing all the screws that was previously removed. Congratulations, you have completed the hardware installation,

Connecting the LanDrive to your Computer

The LanDrive is a multifunctional hard drive enclosure. In addition to being a network storage device, you can also use it as a standalone external hard drive via the USB interface.

Max OS X

Driver installation is not required for systems using Mac OS 10.1.2 or above. Simply connect the LanDrive using the included USB cable and access the data by clicking the "Untitled" HDD icon located on your Desktop.

Windows XP & Windows ME

Driver installation is not required for Windows XP and Windows Me. Simply connect the LanDrive using the included USB cable and access the data via "My Computer".

Windows 98 (Download Drivers)

To utilize the USB connectivity, please download driver from CD driver.

Please ensure that you install the device driver before connecting the USB port. When you complete the driver installation, reboot your computer, connect the LanDrive to your computer and access the data via "My Computer"

You can also access data in the LanDrive connecting it directly using the Ethernet cable with your computer. The LanDrive will have a default IP of 169.254.0.1 when connected directly.

Connecting to your Network

Connect the power adapter to the back panel of the LanDrive and plug the other end to a wall outlet or power strip. Connect the network cable to the LAN port on the back of the LanDrive and the other end of the network cable to a port on your hub, switch or router.

The Ethernet port on the LanDrive is Auto-MDI/MDIX, which means you can connect it using either a crossover or a direct network cable.

Configuring the LanDrive

The LanDrive features a web-based control interface to manage your settings. If you are using an operating system other than Windows, please refer to next section labeled "Other Operating Systems".

Microsoft Internet Explorer

Open your web browser and enter http://Storage or

ARMOR
SERIES OF HDD ENCLOSURE

Network Storage Series

Status
IP Config
Maintenance

SMB Server
FTP Server
Disk Utility

System Information	
Host Name	STORAGE-00F4 <input type="button" value="Change"/>
Group Name	WORKGROUP <input type="button" value="Change"/>
Administrator	admin <input type="button" value="Change"/>
Date/Time	2006/01/01 00:00:26 GMT8 <input type="button" value="Change"/>
Language	English <input type="button" value="Change"/>
Firmware Version	NAS-BASIC48, LOADER 69

Network Information	
IP Address	192.168.1.14
MAC Address	00:0b:b4:00:00:f4
DHCP Server	ON <input checked="" type="radio"/> ENABLE <input type="radio"/> DISABLE <input type="button" value="Apply"/>

Disk Information	
Disk ID	Disk Not found!
Free Size	
Total Size	none

ARMOR
SERIES OF HDD ENCLOSURE

Network Storage Series

Status
IP Config
Maintenance

SMB Server
FTP Server
Disk Utility

System Information	
Host Name	STORAGE-00F4 <input type="button" value="Change"/>
Group Name	WORKGROUP <input type="button" value="Change"/>
Administrator	admin <input type="button" value="Change"/>
Date/Time	2006/01/01 00:00:26 GMT8 <input type="button" value="Change"/>
Language	English <input type="button" value="Change"/>
Firmware Version	NAS-BASIC48, LOADER 69

Network Information	
IP Address	192.168.1.14
MAC Address	00:0b:b4:00:00:f4
DHCP Server	ON <input checked="" type="radio"/> ENABLE <input type="radio"/> DISABLE <input type="button" value="Apply"/>

Disk Information	
Disk ID	Disk Not found!
Free Size	
Total Size	none

Configuring the LanDrive (Other Operating Systems)

When you are planning to perform administrative tasks from a different operating system, you will need to input IP address of the LanDrive in the browser URL address bar.

If you do not know the IP address of the LanDrive, you will have to do this additional

procedure. You will need to connect the LanDrive directly to your computer, input the default IP address 169.254.0.1 in the browser URL address bar to access the web control panel.

Upon a successful login, you will see the following screen.

An overview description of the functions on the left menu bar:

Status Shows the data related to your LanDrive such as networking status and hard drive information. You may also edit administration and file language settings here.

IP Config Allows you to manually configure the IP address of the LanDrive

Maintenance Perform firmware upgrade, reboot or reset the LanDrive

SMB Server Configure the Samba feature of LanDrive for the home/office network file sharing capabilities. You can also create/remove folders and their share permissions.

FTP Server Configure the FTP features of the LanDrive. You may add/remove users and their permissions.

Disk Utility Perform hard drive maintenance routines such as Scandisk and Format.

Software setting When you want to change the design of software, please note that the power supply and network transmitting signal cannot be cut. Meantime, after the confirmation of changing for five seconds, please prevent the original program from suffering from breakage.

Notification:

Welcome to use our products, in order to make you operate it in a more convenient and faster way, we advise you abide by the rules as follows:

1. NAS to Network

Connect NAS to internet, turn on the switch power, after about 50 seconds, you can link it to the network so as to visit NAS via the net.

2. New Hard Disks

NAS only supports a divided part which is for FAT32. The new hard disks need formatting by the internet setting menu. After this, you can use the hard disks normally. Attention that the capacity of hard disk is not exceeding 300GB otherwise the internet system cannot circulate the hard disk regularly.

3. Changing the NAS net setting

While shifting the net setup, you can switch off till the accomplish of page-updating. Certainly, the updating time varies with different status of the net. So, power off before page-updating and setup holding may lead to the breakage and uselessness of NAS inside software.

*NAS destroy usually has such phenomena:

The system light can't light after two-time's lighting;

NAS cannot be visited by the net;

The USB interface can't be used even connected with computer;

When facing these faults, you can solve them by inputting Fireware.

Please refer to the upgrading illustration for the ways of rewriting Fireware.

4. RESET button

While setting up the NAS falsely and failing to visit it via the net, you can recover the producing setup by pressing the RESET button for 10 seconds.

5. As a modem use

To use NAS as a modem, we advise you operate it with FIP software when uploading & downloading files; such as CuteFTP. You can download the specific version in the official internet address of this software.

You can use FTP to upload and download files with better efficiency.

6. Connect computer with USB interface

After turning on the NAS power switch, the internet system is authorized to control the hard disks and till the SYSTEM light is on, USB can visit the hard disks. The USB interface and Lan interface can't be used at the same time.

Status – System Information

The welcome screen displays the IP address, firmware version and the hard drive information such as the hard drive type and storage space available.

The administrator may change the web control panel login information in here.

You may also change the default

hostname of your LanDrive here. Keep in mind that after you change the hostname, you will need to use it to access your LanDrive. For example, if you changed your hostname to "FileServer", please type "http://FileServer" to access the Web Control Panel after you submitted your changes.

The Language setting is used to recognize files with characters other than English. If you have trouble reading your files on the LanDrive, please select the appropriate language.

System Information		
Host Name	STORAGE	<input type="button" value="Change"/>
Group Name	WORKGROUP	<input type="button" value="Change"/>
Administrator	admin	<input type="button" value="Change"/>
Date/Time	2005/01/01 01:01:44 GMT8	<input type="button" value="Change"/>
Language	English	<input type="button" value="Change"/>
Firmware Version	NAS-BASIC41, LOADER 067	

Network Information		
IP Address	192.168.0.25	
DHCP Server	ON <input checked="" type="radio"/> ENABLE <input type="radio"/> DISABLE	<input type="button" value="Apply"/>

Disk Information	
Disk ID	[Master] Maxtor NAR61HAD E14XBB4N
Free Size	39124 MB free
Total Size	39205 MB

When you reset the LanDrive, either by the hardware switch or through the web control panel, all the settings will return to the default setting including the hostname. The default hostname will remain as Storage-XXXX (where XXXX is the last four digits of the MAC address).

IP Configuration

The administrator may use this option to manually define the IP address of the LanDrive. If the hub/router/switch in your network has a DHCP server, then the LanDrive will automatically be assigned an IP address.

IP Config	
<input checked="" type="radio"/> Automatic IP	
<input type="radio"/> Static IP as below	
IP	<input type="text" value="192.168.0.25"/>
SubnetMask	<input type="text" value="255.255.255.0"/>
Gateway	<input type="text" value="192.168.0.1"/>
Primary DNS	<input type="text" value="192.95.1.1"/>
Secondary DNS	<input type="text" value="0.0.0.0"/>
<input type="button" value="Apply"/>	

The LanDrive can also act as a DHCP server when one is not present in your network. The default IP of the LanDrive in DHCP server mode is "169.254.0.1" and any device that is linked to the network containing will be assigned an IP of "169.254.0.x" automatically.

Maintenance

The administrator can perform

The screenshot shows a web interface with three main sections:

- Firmware Upload:** A section with the text "Select new firmware to upload." followed by a text input field, a "浏览..." (Browse) button, and an "Upload" button.
- System Reboot:** A section with the text "Click Reboot to have the device perform a software restart. The SYS LED blinks as the device restarts and then steady on if the restarts is successful. Wait a minute before logging into the device again." followed by a "Reboot" button.
- Factory Defaults:** A section with the text "Click Reset to clear all configuration and restore to default settings. Please click 'Reboot' after reset." followed by a "Reset" button.

maintenance tasks on the LanDrive here.

After updating the firmware or resetting to factory defaults, please make sure that you restart the LanDrive and refresh your browser.

Samba Administration

Samba enables the core function of the LanDrive which is network file sharing.

This option allows the administrator to determine the folders/directories to be shared.

The screenshot shows the "SMB Server" configuration page. It is divided into two main panels:

- Folder List:** Contains buttons for "Create", "Rename", and "Delete". Below these is a list with "PUBLIC" and "123" as entries. "PUBLIC" is currently selected.
- Sharing List:** Contains a "Password" input field and a list with "PUBLIC" as an entry. "PUBLIC" is currently selected.

In the center, between the two panels, are two arrow buttons: "-->" and "<--".

In here, you can create, rename and delete folders/directories in your LanDrive. All the folders/directories in the root directory that were previously in your hard drive before it was installed in the LanDrive will also be shown in the "Folder List".

The arrow keys in the middle are used to determine if the selected folder/directory is to be shared. Password protection for each shared folder can also be implemented.

When creating folders/directories through the web control panel, please use only English alphabets.

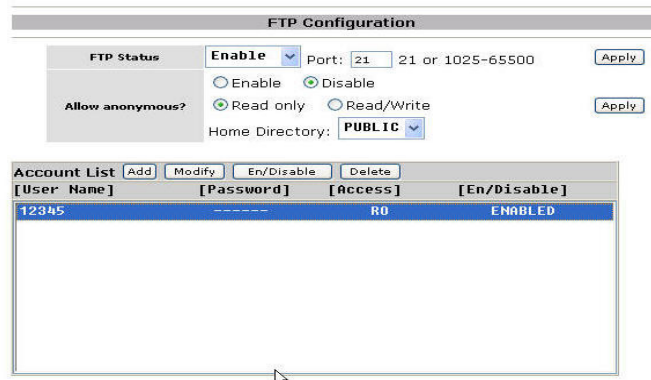
FTP Configuration

Abbreviated from File Transfer Protocol, FTP enables file exchange between computers on the Internet. The LanDrive can work as a stand-alone FTP server when it is assigned a static IP.

Anonymous FTP is disabled by default.

The administrator can determine if the

users have read or write permission and the "Home Directory" will be the folder/directory the anonymous user can access upon logging in.



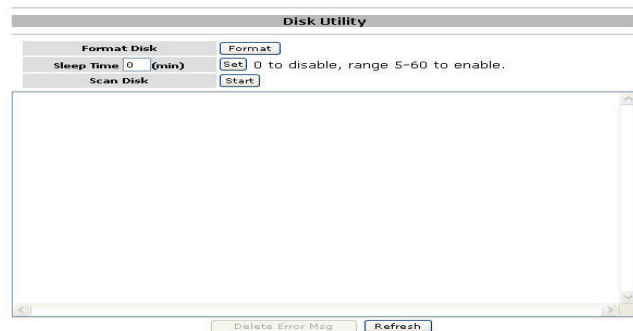
The Account List displays the current FTP user accounts, the administrator can add new users, modify their permissions, temporary disable users and delete users.

Disk Utility

If you have installed a new hard drive in the LanDrive that is not formatted, this will be the place to format it to the FAT32 format.

Since the LanDrive supports power management, you can also determine

the time the hard drive have to be inactive in order for the LanDrive to enter sleep mode.



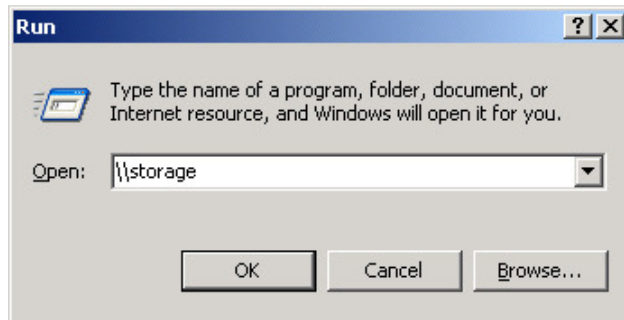
The Scan Disk function can be used to detect potential problems with the hard drive. Click on the refresh button to display the scandisk result.

Access Files from the LanDrive – Windows

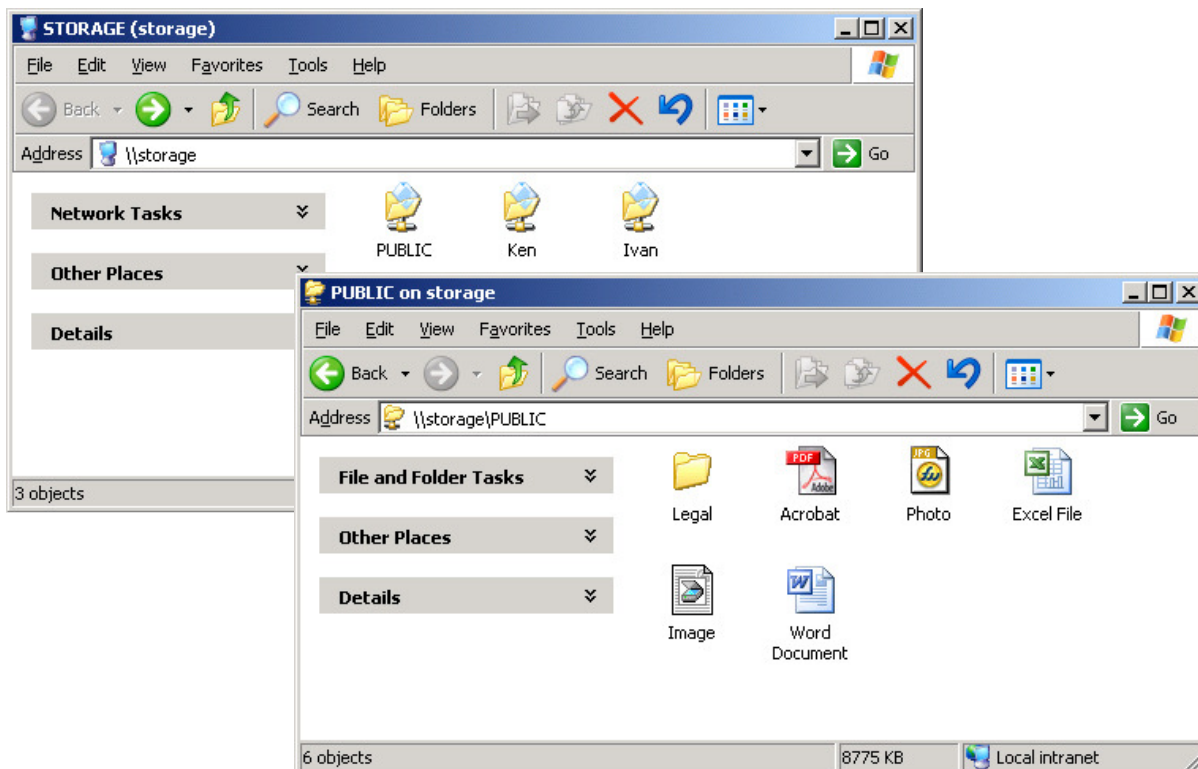
In Windows, the data can be accessed by searching for the LanDrive in the “Network Neighborhood” (as a computer with the name “Storage”). Or you can access the data in the LanDrive with the following instructions.

The follow screenshots are taken from a PC running Windows XP SP2 and may vary slightly from your computer screen.

Click on the Windows Start button, select “Run” from the menu and a dialogue box as shown will appear.
Type “\\storage” in the field and click “OK”.



If you change the LanDrive hostname, you will need to replace the word “storage” with it. For example, if you changed your hostname to “FileServer”, please type “\\FileServer” instead.



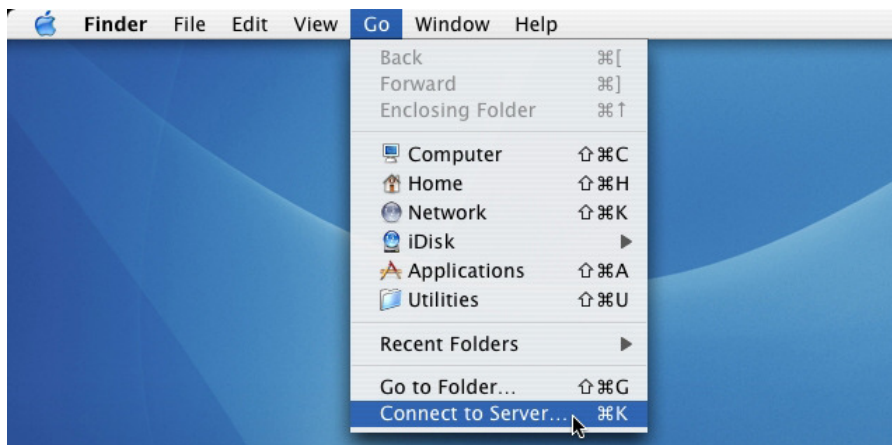
The Windows Explorer will appear and you should be able to see all the folders that were previously selected to be shared under “SMB Server” in the control panel. Clicking on the corresponding folder will reveal the files in that folder.

Access Files from the LanDrive – Mac OS

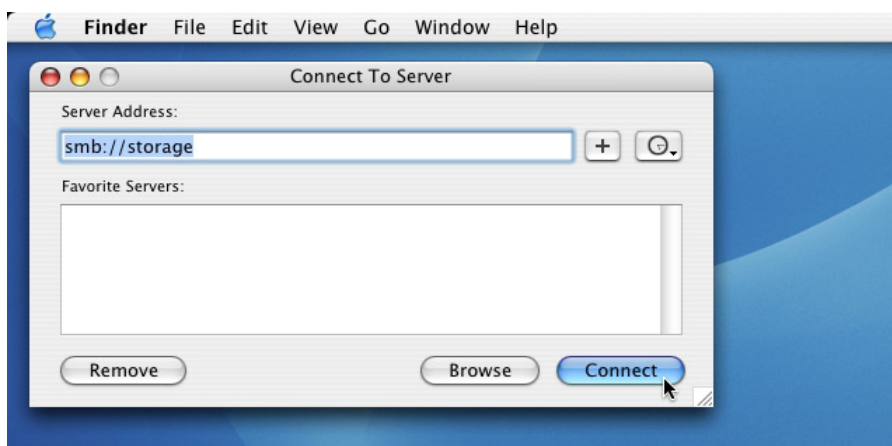
If the client computer is an Apple Macintosh running Mac OS, they will have to follow the procedure below to mount each shared folder as an SMB share to access the data.

The follow screenshots are taken from a iMac running OS 10.3.x and may vary slightly from your computer screen.

Under Finder, select
Go >> Connect to
Server
or use the hotkey
<Command +K>



The dialogue box
"Connect to
Server" will appear.
Type
"smb://storage"
and click the
Connect button.



If you change the LanDrive hostname, you will need to replace the word "storage" with it. For example, if you changed your hostname to "FileServer", please type "smb://FileServer" instead.

The next dialogue
screen will
prompt you for
the folder that
you will like to
access. Select it
and click the OK
button.



You might be prompted to enter a password, unless a password was previously assigned in the control panel, you can leave it blank. After a successful mount, a network folder icon will be created based on the folder you selected as shown.



Frequently Asked Questions

1. Does the LanDrive support power management?

Yes, when there isn't any hard drive activity within fifteen minutes, the LanDrive will power down to reduce power consumption. The sleep time can be configured via the web control panel.

2. How does the LanDrive achieve its data sharing capabilities?

Utilizing the SMB (Server Message Block) protocol, the LanDrive allows any computer client that supports TCP/IP, NetBuei or IPX/SPX to share files. The built-in FTP server also allows any clients with internet connectivity to access the LanDrive.

3. What is the size limitation for the LanDrive?

The LanDrive support LBA (48-bit Logical Block Addressing) which in theory includes all hard drives from 32 gigabytes to 2 terabytes.

4. Why the LanDrive only support FAT32 format?

As a cross platform file server, FAT32 format is compatible with all major operating systems (Windows/Mac OS/Linux). The only drawback of a FAT32 format is the single file size limitation of 4 gigabytes.

5. How does the LanDrive DHCP service work?

The LanDrive functions as a DHCP(Dynamic Host Configuration Protocol) server when it does not detect the presence of other DHCP servers in its network. DHCP is an Internet protocol for automating the configuration of computers that use TCP/IP by automatically assigning IP addresses.

6. What are the naming limitations of the files located in the LanDrive?

The maximum length of a folder/directory/file name is 12 characters. Invalid characters such as "*" \ : " < > . ? /" may not be used.

7. What kind of hard drive is compatible with the LanDrive?

The LanDrive supports 3.5" Ultra DMA/ATA hard drives which are mostly manufactured after 1998. Below is a list of manufacturer websites you can refer to for more information on the hard drive you own.

☒Western Digital	http://www.westerndigital.com
☒IBM/Hitachi	http://www.hitachigst.com
☒Samsung	http://www.samsung.com
☒Seagate	http://www.seagate.com
☒Maxtor	http://www.maxtor.com