



USER MANUAL (QUICK START GUIDE)

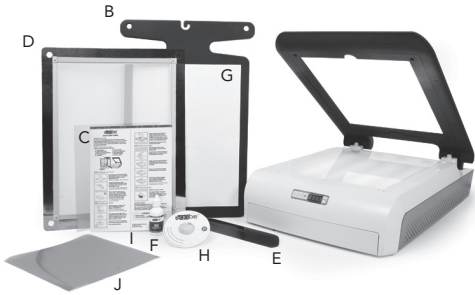
INTRODUCTION

The Yudu™ screen-printing system is the easiest, cleanest way to let everyone know who you are—and how you see the world. Unsilence yourself today—with apparel, home décor, art prints, posters, cards, schoolwork, and more. Use Yudu to let your voice be heard.

STEP 1: Unpack your box

Your box should contain the following:

- A. Yudu machine
- B. Adult t-shirt platen
- C. Blank ink-jet transparency
- D. 110 mesh screen
- E. Squeegee
- F. 2 fl oz black ink
- G. Platen adhesive sheet
- H. Instructional DVD
- I. User manual (Quick start guide)
- J. Emulsion sheet



STEP 2: Prepare your screen



Spray the screen with water. It should be completely wet, but not dripping. Place screen on Yudu lid, with the backside facing up.

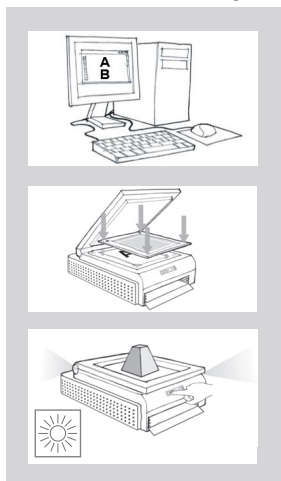
TIP: You can use a spray bottle to wet screen.

Apply the dull/sticky side of emulsion sheet to the back of the wet screen. Run squeegee across the emulsion sheet.

TIP: Wet your fingers and touch the corner. The sticky side is the dull side.

Place screen in drying rack of Yudu machine. Press fan button and let the screen dry for 20-45 minutes. Machine will beep when done. Test for dryness before moving on to the next steps. **After emulsion has dried, remove plastic film.**

STEP 3: Create your design



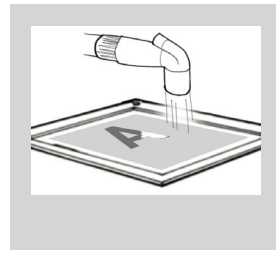
Create design on computer and print on transparency or draw directly on transparency.

TIP: For multicolored designs, separate colors into different layers.

Tape transparency to glass. Place screen front side up/emulsion side down on registration posts. Place platen on platen posts, felt side down, on top of screen.

Close lid and add extra weight to top of platen (approximately 5 lbs)

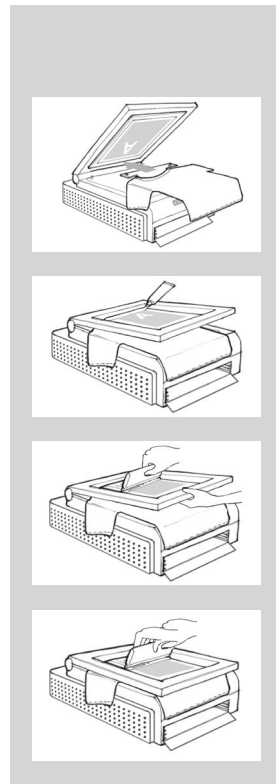
Press exposure button.



Spray screen with cool water to remove green emulsion from design area. It may be necessary to gently rub both sides of screen by hand or use a sponge to remove emulsion in detailed design areas.

Place screen in drying rack and press the fan button.

STEP 4: Print your design



Tap the front of the screen around edges to seal any open screen areas.

Mount t-shirt or other material on platen. Open lid and place platen on platen posts. Close lid.

Apply generous bead of ink onto screen just above design. Make sure bead of ink is at least as wide as design.

Flood screen with ink by gently pulling squeegee across design.

Lower lid and grasp squeegee with both hands. Using firm, even, downward pressure, pull squeegee across screen.

TIP: Ink can be reused by scraping excess back into container.

STEP 5: Heat set design



Allow ink to dry on article.

For apparel items, heat set ink. Using high setting on an iron, cover design with paper or cloth and iron for 3 to 4 minutes on each side.

LEARN MORE:

For more detailed instructions, visit www.whatdoYudu.com and download the free Yudu user manual.

Also visit www.unsilenceyourself.com to join our online community for Yudu users. Watch videos, share your creative ideas, and download free artwork!

SUPPORT INFORMATION:

Monday–Friday
7:00 a.m.–6:00 p.m. (MST)

E-mail: yudusupport@provocraft.com
Phone: 1 (877) 9MY-YUDU
1 (877) 969-9838

© 2008 Provo Craft and Novelty, Inc.
All rights reserved
Spanish Fork, UT 84660
Made in China

www.provocraft.com • 066308

DISPOSAL: Do not dispose this product as unsorted municipal waste.

