

Safety notice

Before use, Please read the user manual carefully.

Only support the standard battery, charger and accessories we approved, we won't take any responsibility for any consequences caused by the use of third party accessories.

Prohibit the unauthorized disassembly of watch phone.

No mechanical vibrating and shaking, No kicking the screen by tool.

No using solute to clean the shell, such as benzene, thinner or alcohol, No touching the watch phone with corrosive chemicals and so on, but with a clean textile to clean it softly.

No exposing the watch phone under the sunrise or the place with smog and dust,

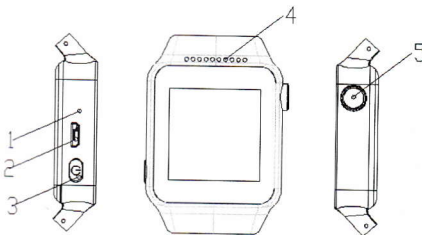
Keep the phone in dry. No using in the wet environment such as bathroom. This watch is not water proof and is strictly prohibited to rain and moisture.

Please put the watch phone in a safety place out of the reach of children to avoid any dangerous happening.

1

1、 Introduction

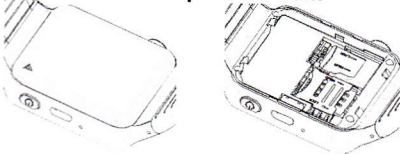
1.1 Key function introduction



1. MIC
3. Power on/off/Return
5. Camera

2. USB/earphone port
4. Speaker

1.2 Removable battery, install Sim card and Micro sd card Step illustration:



2

2、 Phone function

Function introduction

This watch phone can support GSM quad bands sim card(850MHZ,900MHZ,1800MHZ,1900MHZ) and Expand TF memory card. It is not only a watch phone, also can use its smart bluetooth to sync your another Iphone&Android phone's music player, calls, call history, phonebook, also can sync Android phone's SMS, Email, Facebook, Skype, Twitter, ect notifications.

It also has build-in bluetooth(connect with bluetooth headset), FM, U-disk, Alarm, Calendar, Mp3, Sleep monitor, Pedometer, Remote Camera and so on.

2.1 Standby Clock



3

2.2 Main Menu



1. Display the time, Date and day of the week
2. The three menu at the bottom are: Calls, Message and Pedometer

2.3 Function Menu



4

PS: Looking phone, Sedentary remind, Pedometer, Sleep monitor use the same sensor, so can not use them together at the same time.
Before use the camera to take photo or video, please insert TF card in the watch.

3 Settings

3.1 Bluetooth setting

Option	Instructions
Active bluetooth	Can turn on/off the bluetooth
Search handfree devices	After the activation, it can search the devices to communicate with it
My device	Can change the bluetooth name

3.2 Restore factory setting

The phone will be restored factory default setting after select this function. But it needs to insert the password, default password is "1122"

3.3 Audio player

The inner music player can play music, and set the music to be the ring. But attention: The MP3 files only can be played after saved to the Root directory "my music"

5

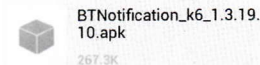
Choosing the suitable volume when listening the music as it may harm your hearing in continued high volume.

3.4 FM radio

Using the phone to listen the broadcast, please insert the earphone to the usb port. The earphone line is same as the antenna of radio, so please let it hanging freely

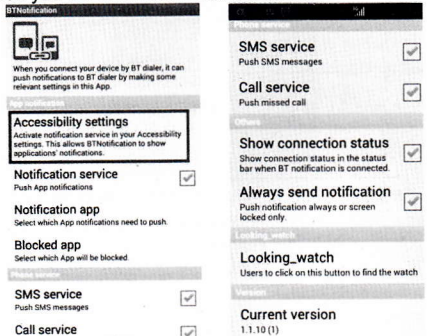
3.5 Apk install for smart phone

1: APK must be installed first in your Smart Phone, then the Sync service can work.
Scan QC code in watch to get "APK", download this APK, install it in the phone.



6

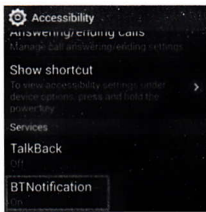
Then you will enter the below interface:



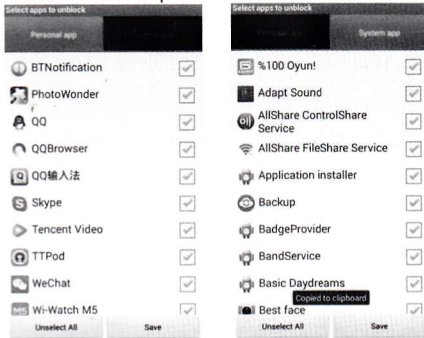
*you can click to choose open and closed about the push notification service to the watch. ICON means "Open".

3: Click "Accessibility settings" To activate the bluetooth notice. "ON" means activated state.

7



4. Click "Notification APP", can choose which APP notifications need to push to the watch:



8

Common Troubleshooting

If any problems appeared when using the watch phone, please follow below solution ways. If the problems are still existed, please contact the distributor or appointed maintenance personnel

The watch phone can not power on.

- Press "on" button till boot screen
- Check the battery power
- Check if the battery poor contact, remove it and install the battery again, then power on

No feedback for several minutes

- Press "off" key
- Remove the battery and install again, then power on.

Using time is short

- Please make sure have not closed the screen savers
- Please make sure enough charging time (more than 3 hours)
- After charging parts of power, Battery level

9

indicator might be inaccurate. Please wait about 20 minutes to get the accurate indication after removing the battery charger.

Cannot connect the network

- Please try in another place
- Please confirm the net service place from your network supplier
- Please make sure your SIM card is effective from your network supplier
- Try to select the network by hand
- Please try it later if the network is busy.

Cannot dial the watch phone

- Please make sure the telephone NO. is correct and press the call button
- For the internet calling, please check the country code and area code.
- Please make sure the phone with net work and not in busy status
- Please make sure your Sim card have enough money and did not prohibit the calling
- To inquiry your register information from your network supplier (such as limit, SIM card

10

validity and so on)

- Please make sure did not set the call limited
- Please check if set the fixed dialing

Music cannot be played

- Please check if the music format is supportable, such as MMF format
- Please check the music is existed without deleting: you can update your playing list and make sure it is under "my music" file.

Can not sync SMS

- Please check if have donwload the Apk in your Android phone (Iphone not support)
- Please check if you have actived the bluetooth notification function after installing the Apk

11