

Ultima™ Instructions

Stainless Steel Bath Chair with multiple seat, back and leg adjustments

Model Numbers:

8520 (up to 100 lb/45 kg weight capacity)

8620 (up to 130 lb/59 kg weight capacity)

8720 (up to 160 lb/73 kg weight capacity)

8920 (up to 180 lb/82 kg weight capacity)



The Ultima Bath Chair can be upgraded to the next size with our unique conversion kits!

ATTENTION

Your Ultima Stainless Steel Bath Chair has been built to the highest standards of quality to ensure years of superior service. Please take the time to read this informative instruction guide and pay particular attention to the safety information provided.

Here are some additional precautions you can take to prevent the risk of injury:

1. Read and understand ALL instructions.
2. Determine, with a physician or therapist, the suitability of this product for the intended user.
3. **To reduce the risk of injury or drowning, NEVER leave the user unsupervised or unattended while using this product.**
4. Check regularly that all tubing, bolts, buckles, and other parts are tight at ALL times.
5. When occupied, make sure the user is buckled in at all times.
6. Chair legs should NEVER be in complete vertical positions.
7. SAVE THESE INSTRUCTIONS.

If you require additional assistance, please contact Columbia Medical Customer Service at (800) 454-6612, or email info@columbiamedical.com.

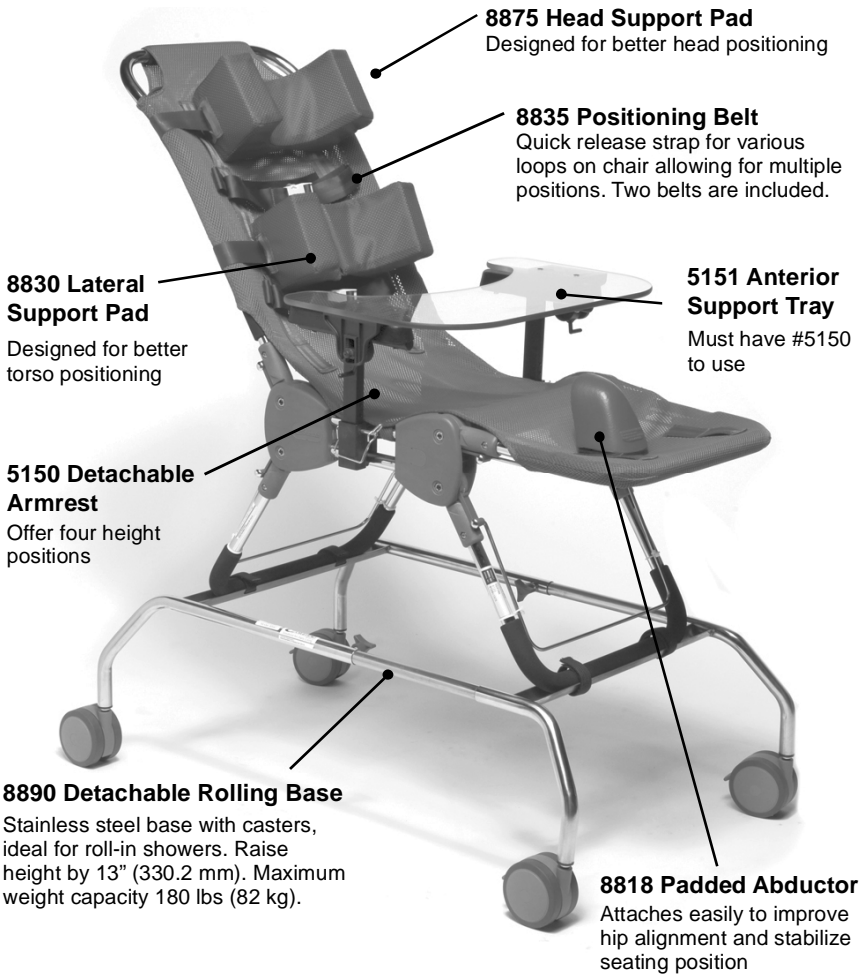
Thank you for choosing Columbia Medical.

ACCESSORIES

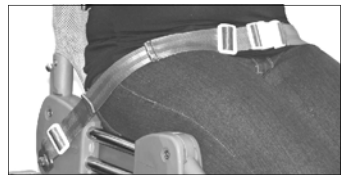
To order accessories for your Ultima bath chair, please contact customer service at **(800) 454-6612**, or send an email to **info@columbiamedical.com**.

MODEL #	DESCRIPTION
8629	Conversion Kit - converts Ultima bath chair to accommodate up to 130 lbs. (59 kg) weight capacity
8729	Conversion Kit - converts Ultima bath chair to accommodate up to 160 lbs. (73 kg) weight capacity
8929	Conversion Kit - converts Ultima bath chair to accommodate up to 180 lbs. (82 kg) weight capacity

ACCESSORIES (CONTINUED)

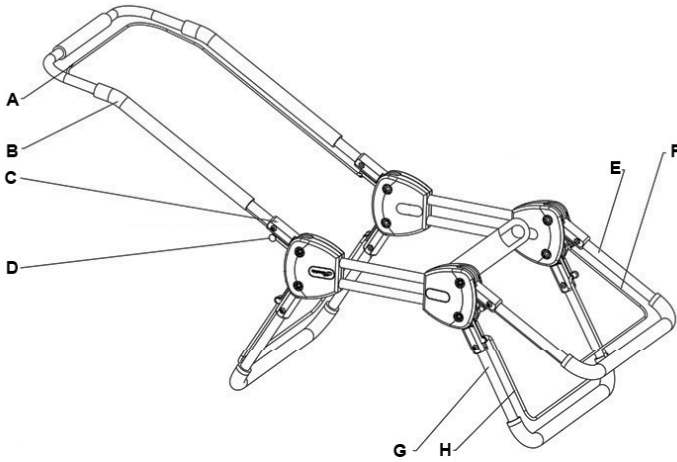


8880 Detachable Extension Base
Raise height by 9.5" (241.3 mm). Max. weight capacity 180 lbs (82 kg). Ideal for tubs.



8834 Pelvic Positioning Belt

ASSEMBLY OF CHAIR



A - Back angle adjustment pull handle
B - U-shaped back support frame
C - Insertion point for back frame
D - Back angle adjustment pull tab
E - U-shaped calf support frame

F - Calf angle adjustment pull handle
G - Leg frame (can be positioned at 0°, 30°, 60° angles, relative to seat's horizontal plane)
H - Leg frame adjustment pull handle

Assembling the Back Support:

1. One by one, pull on each of the pull tabs and change the pivot angle to vertical (Fig. 1). Insert the U-shaped stainless steel back and calf frames into the pivots and fasten with bolts and nuts provided.
2. Insert the ends of the angle adjustment pull handles into the small holes located on the pull tab on each side of the frame (Fig. 2).

Firmly press the stainless steel caps over the ends of the pull handle. Please ensure that the end cap fits tightly over the groove on the pull handle. Test it by tugging at the cap. If it comes off, then reinstall.

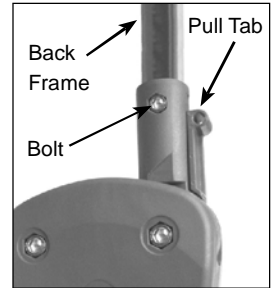


Figure 1

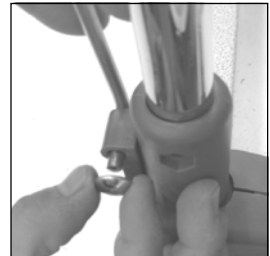
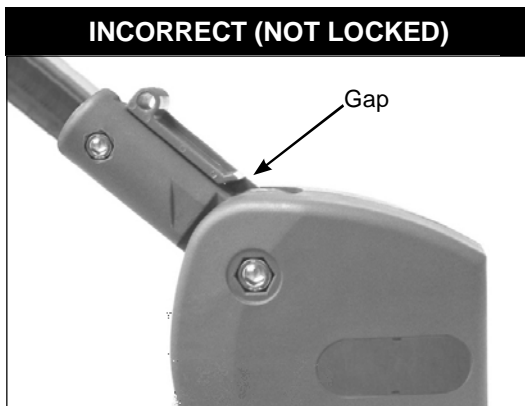
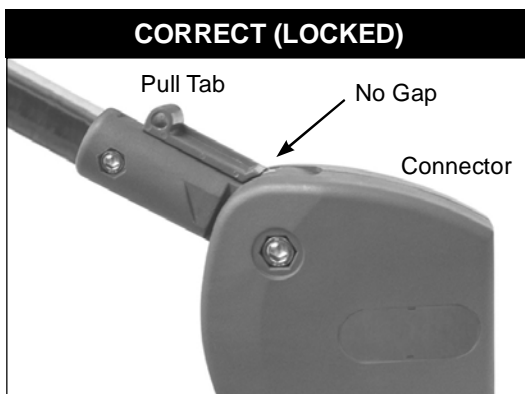


Figure 2

PROPER ASSEMBLY CHECK

Before each use of your bath chair, please verify that the back and calf supports are properly installed and locked into position. When correctly installed, the pull tab should click into place and completely engaged into the slot. There should not be a gap between the pull tab and connector. See the figures below.



ATTENTION

Adjustments to the Ultima™ SHOULD NOT be made while the product is in use or occupied.

COVER INSTALLATION AND ANGLE SETTINGS

Cover Installation: (refer to chair diagram on page 4)

- Pull on the angle adjustment pull handles (A, F) to set the backrest and calf supports to the most upright position (Fig. 3). Slip the cover over the backrest and adjustment pull handle and then calf support and pull handle (Fig. 4). Wrap the velcro straps around the top side-tube and secure underneath the chair (Fig. 5).

Adjusting Back Angle:

1. Locate the adjustment pull handle (A) on the back of the chair under the cover (it is not necessary to remove the cover to operate the lever). Using both hands, grip the lever and back frame and squeeze together.
2. With a lifting motion, adjust the back angle up or down.

NOTE: Back angle should not be adjusted when the chair is occupied.



Figure 3

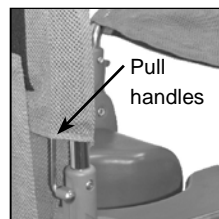


Figure 4

Adjusting Calf Support Angle:

1. On the calf support frame, under the cover, locate the adjustment pull handle (F). It is not necessary to remove the cover. Using both hands, grip the pull handle and calf support frame and squeeze together.
2. With a lifting motion, adjust the angle up or down.

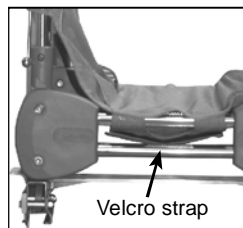


Figure 5

Note: The legs can be positioned at 0°

(horizontal), 30°, and 60° angles (relative to the seat's horizontal plane).

⚠ WARNING

The legs **SHOULD NEVER** be in a complete 90° angle (perpendicular to the seat's horizontal plane). Leg angles greater than 60° will cause the chair to be unstable.

CLEANING INSTRUCTIONS

Soapy water or mild cleansers may be used on all parts of your Ultima Bath Chair. Harsh abrasive cleansers may dull the finish.

FABRIC CARE

The fabric cover for Ultima Bath Chair is made of polyester that is durable, antimicrobial, resilient, quick drying, fade resistant, and machine washable.

Cleaning Instructions:

1. Remove the chair cover by following these steps below:
 - Adjust the back and calf support frames to horizontal. Turn the chair up-side down and remove velcro strap.
 - Slip the cover over the back and calf supports.
2. Using warm water (100°F/38°C) and household laundry detergent, wash the cover in the washing machine using gentle cycle.
3. Air dry.

MAXIMUM WEIGHT CAPACITY

To ensure the occupant's safety, DO NOT exceed the following maximum weight limits:

MODEL NO.	MAXIMUM WEIGHT CAPACITY
8520	100 lb. (45 kg)
8620	130 lb. (59 kg)
8720	160 lb. (73 kg)
8920	180 lb. (82 kg)

CE

BS Partnership
41 Dan-y-Coed Road
Cardiff
CF23 6N
UK



Solutions for Daily Living

11724 Willake Street

Santa Fe Springs, CA 90670

Toll Free: 800-454-6612

Direct: 562-282-0244

Fax: 310-305-1718

Website: www.columbiamedical.com

Email: info@columbiamedical.com

© 2012 Columbia Medical Mfg., LLC

Every Columbia Medical product comes with our one year manufacturer's warranty. This warranty ensures that when you receive our products, they will arrive free of defects in material and workmanship. We will repair or replace any part or entire product at our discretion for a period of up to one year from the date of delivery to the original purchaser. This warranty does not include cost of inconvenience, shipping, property damage, misuse, abuse, accident, or similar incidents. The warranty will not apply if the product has been modified, tampered with, repaired by unauthorized individuals or assembled incorrectly. Custom orders are non-refundable and non-returnable.