

SongBook +

Release 2.0(3)

User Manual

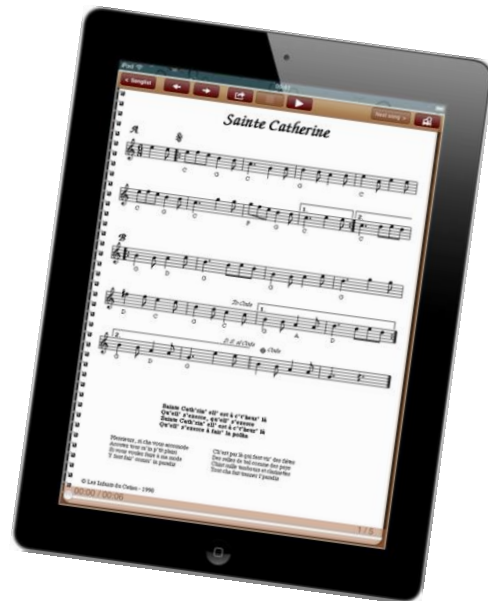
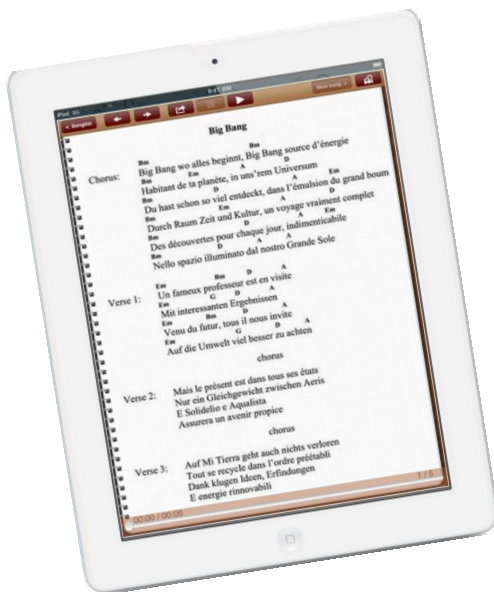


Table of contents

1	SongBook+ settings	4
2	Add files to SongBook+ using iTunes	5
3	Insert unused files into the song list.....	6
4	Use the song list	7
5	Edit song details	8
6	Display a PDF document and scroll in the document	9
7	Preselect next song without closing the current song	10
8	Use of the metronome	11
9	Use of night colors.....	12
10	Record page turns automatically	13
11	Record finger pointer in the "Karaoke style"	14
12	Insert / edit / delete annotations.....	15
12.1	Insert annotations	15
12.2	Delete annotations.....	17
12.3	Edit annotations	17
12.4	Copy annotations	18
12.5	Save frequently used annotations.....	18
12.6	Action button annotations	19
13	Use playlists	20
13.1	Select an existing playlist.....	20
13.2	Add a new playlist	21
13.3	Rename or delete playlists	22
13.4	Edit the content of the playlist.....	23
14	Import files from mail or other applications.....	24
15	Share songs or files (export)	25
16	Share SongBook folder via Wi-Fi	26
17	Import lyrics from MP3 file	27
17.1	Add a song without PDF and select MP3	27
17.2	Create PDF from lyrics in MP3.....	27
18	Scan lyrics on paper with built-in camera.....	28
19	Use the MIDI features.....	29
19.1	Connecting iPad to MIDI.....	29
19.2	Open song text on incoming MIDI commands.....	30
19.3	Send MIDI commands when song text is opened	31
19.3.1	Send the configured BankSelect/ProgramChange commands	31
19.3.2	Send the contents of a MIDI file upon opening the song.....	32
19.3.3	Send other configurable MIDI commands	32
19.4	Send MIDI commands when the song is started.....	32
19.4.1	Send the contents of a MIDI file upon starting the song	32
19.4.2	Send MIDI Start when the song was started	32

19.4.3	Send other configurable MIDI commands	32
19.5	Send MIDI commands when the song is stopped	33
19.5.1	Send the contents of a MIDI file upon stopping the song.....	33
19.5.2	Send MIDI Stop when the song was stopped.....	33
19.5.3	Send other configurable MIDI commands	33
19.6	Send MIDI commands at a button touch	33
20	Using foot pedals.....	34
20.1	Foot pedals that simulate an external keyboard	34
20.2	Foot pedals that send MIDI commands	35
21	Connecting multiple iPads with SongBook+	36
22	Use of multiple books.....	37
23	Backup and restore your data	38
23.1	Backup your data.....	38
23.2	Restore your data from Backup	39
24	Quit SongBook+ or other apps completely	40
24.1	Quit the apps in iOS 7 or above.....	40
24.2	Quit the apps in iOS prior to iOS 7	41
25	Supported file formats	42
25.1	Files for text or note display.....	42
25.2	Music files.....	42
25.3	Midi files	42
25.4	Video files	42
26	Contribution.....	42
27	Contact information	42

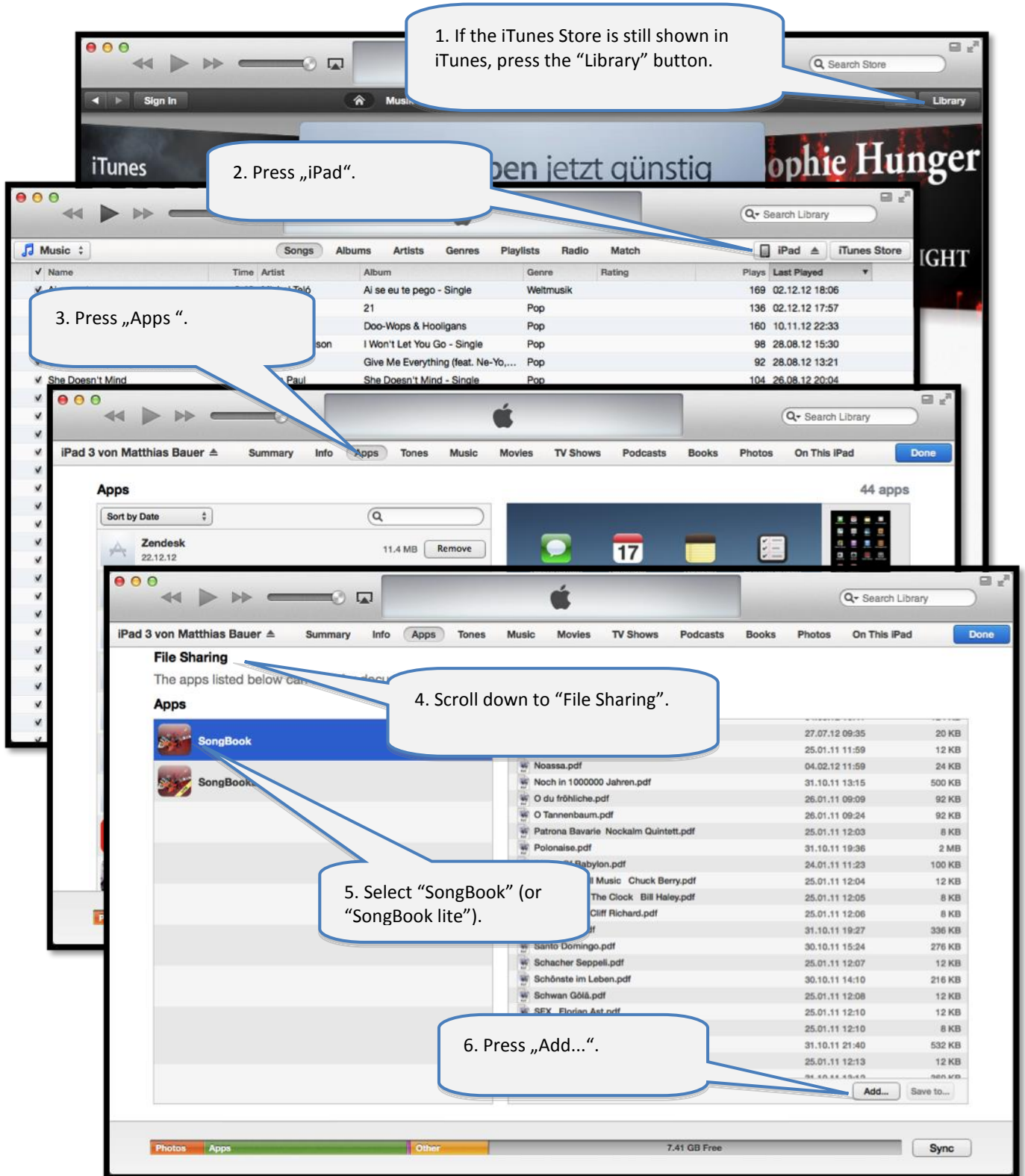
1 SongBook+ settings

The global settings of SongBook+ can be found in the "Settings" app.



2 Add files to SongBook+ using iTunes

To add PDF, music or video files to SongBook, connect your iPad to the computer, start iTunes and follow the steps below:



3 Insert unused files into the song list

After inserting PDF, music or video files into SongBook, they appear as "Unused Files".

By following the steps below you can transfer them into the song list and provide additional information like title, artist, genre and MP3 file to play in the background.

1. Press "Edit".

2. Press the "+" sign.

3. If necessary, change the title.

4. If you have numbered your songs, enter their numbers here.

5. You can enter here some short additional information that, for example, will be displayed during the preview of this song.

6. Enter the name of the artist and the genre or select the existing ones from the list.

7. If you want to playback an audio, midi or video file, select it here.

8. Press "Save".

9. Insert another song using the "+" sign or press "Done" to finish.

4 Use the song list

The screenshot shows the SongBook+ app interface. At the top, there is a navigation bar with buttons for '<', 'Sort', 'Playlists', a search bar, and icons for a keyboard and a share button. The main content area is divided into sections. The first section is 'Unused Documents', which contains PDF files like 'Du entschuldige.pdf', '1.000 mal belogen.pdf', and 'Aber bitte mit Sahne.pdf'. Below this, there are sections for song lists, grouped by the first letter of the title (A, B, C). Each song entry includes the title, artist, genre, and MIDI information. Callouts provide additional information: 'Tap here to select the order of the song list.' points to the 'Sort' button. 'If you type text into the search bar, only songs containing this text in the title are displayed.' points to the search bar. 'The section „Unused Documents“ contains PDF documents added with iTunes but not yet added to the song list.' points to the 'Unused Documents' section. 'The other sections contain the song list grouped depending on the selected order (first letter of the title, artist or genre).' points to the song list sections. 'You can use the “+” to toggle between “Unused Documents” and “All Documents”.' points to the '+' icon next to the 'Unused Documents' section. 'The index on the right side allows quick scrolling and quick alphabetical access in the song list.' points to the alphabetical index on the right. 'Tip: Also try to tap and move your finger here!' points to the song list entries. 'Press and hold a line for a long time to open a context menu with actions that can be performed on the selected entry.' points to a song entry.

Tap here to select the order of the song list.

If you type text into the search bar, only songs containing this text in the title are displayed.

The section „Unused Documents“ contains PDF documents added with iTunes but not yet added to the song list.

The other sections contain the song list grouped depending on the selected order (first letter of the title, artist or genre).

You can use the “+” to toggle between “Unused Documents” and “All Documents”.

The index on the right side allows quick scrolling and quick alphabetical access in the song list.

Tip: Also try to tap and move your finger here!

Press and hold a line for a long time to open a context menu with actions that can be performed on the selected entry.

Unused Documents

Du entschuldige.pdf

1.000 mal belogen.pdf

Aber bitte mit Sahne.pdf

Alperose.pdf

An der Nordseeküste.pdf

Anton aus Tiro.pdf

Augen zu und durch.pdf

Baby Come Back (201).pdf

Blue Spanish eyes.pdf

California Blue (121).pdf

Artist: , Genre: , MIDI: -

Artist: Diverse, Genre: Deutsch Pop, MIDI IN+OUT: Ch 01 Bnk 007/003 Prg 011

Artist: Polo Hofer, Genre: Mundart, MIDI IN+OUT: Ch 01 Bnk 000/000 Prg 004

Artist: Ötzi, Genre: Deutsch Pop, MIDI IN+OUT: Ch 01 Bnk 000/000 Prg 008

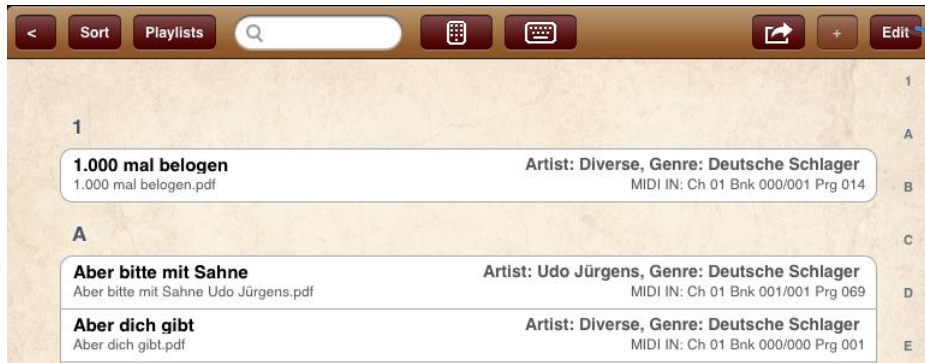
Artist: Diverse, Genre: Deutsche Schlager, MIDI IN+OUT: Ch 01 Bnk 000/000 Prg 009

Artist: Paloma, Genre: Deutsche Schlager, MIDI IN+OUT: Ch 01 Bnk 000/000 Prg 014

Artist: Diverse, Genre: Englisch Pop, MIDI IN+OUT: Ch 01 Bnk 000/001 Prg 054

Artist: Diverse, Genre: Englisch Pop, MIDI IN+OUT: Ch 01 Bnk 000/001 Prg 024

5 Edit song details



2. Tap the song you want to edit in the list.



Edit song details

Document
Aber bitte mit Sahne Udo Jürgens.pdf ...

Title
Aber bitte mit Sahne

Artist
Udo Jürgens ...

Genre
Deutsche Schlager ...

Second genre
...

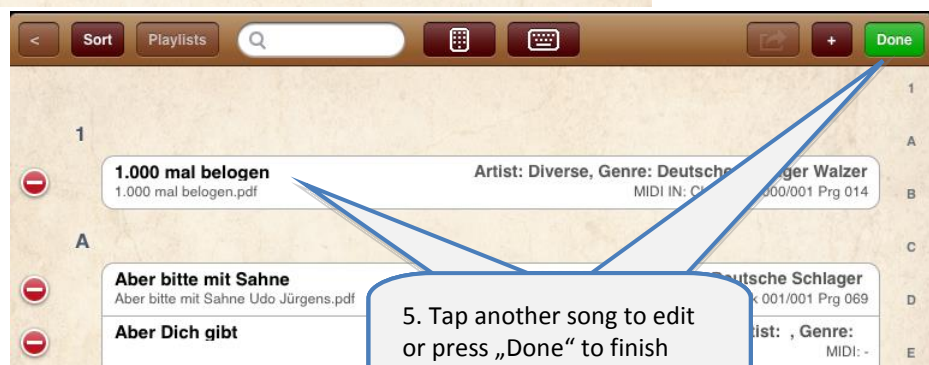
Soundfile to play in background
...

Automatic start replay when opened

Save **Cancel**

3. Edit the song details.

4. Press „Save“.



6

6 Display a PDF document and scroll in the document

Tap a song in the list with your finger and the PDF will be displayed.

Press the „Play“ button to play recorded page turns, finger pointer or mp3

Tap the „< Songlist“ button to go back to the song list.

Press the „Action“ button to see the menu for more options like recording page turns or finger pointer

Tap anywhere in the document to show or hide the toolbar (button bar).

Swipe your finger(s) to the left (or up):

- One finger:
Go to next page.
- Two fingers:
Press „Play“ button.
- Three fingers:
Go to next song in play list

Swipe your finger(s) to the right (or down):

- One finger:
Go to previous page.
- Two fingers:
Press „Stop“ button.
- Three fingers:
Go back to song list.

Zoom in and out using two fingers.

Double tap to go back to original size.

Use the small preview images to scroll at a faster pace.

7 Preselect next song without closing the current song

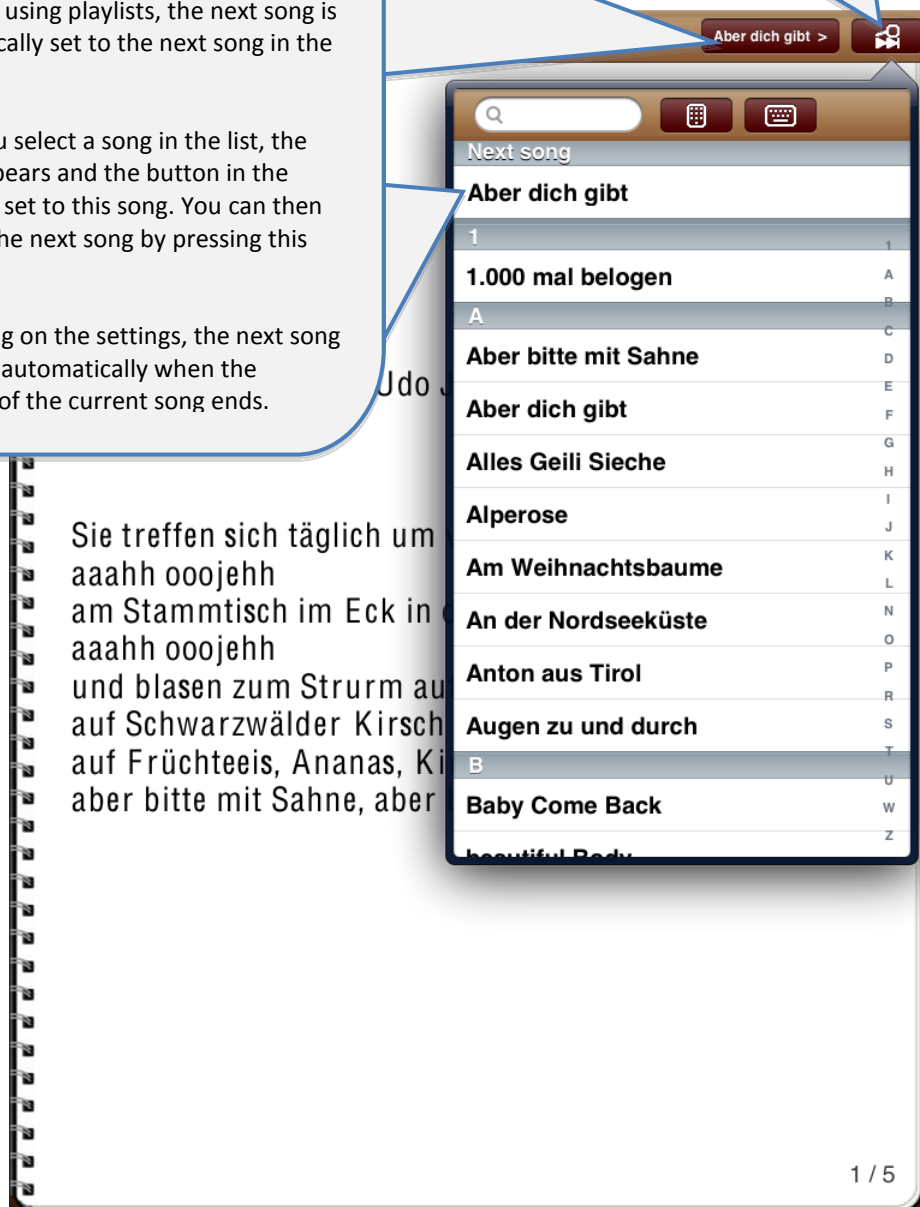
If the next song is already known, it is displayed in the first line of the table and in this button in the toolbar.

If you are using playlists, the next song is automatically set to the next song in the playlist.

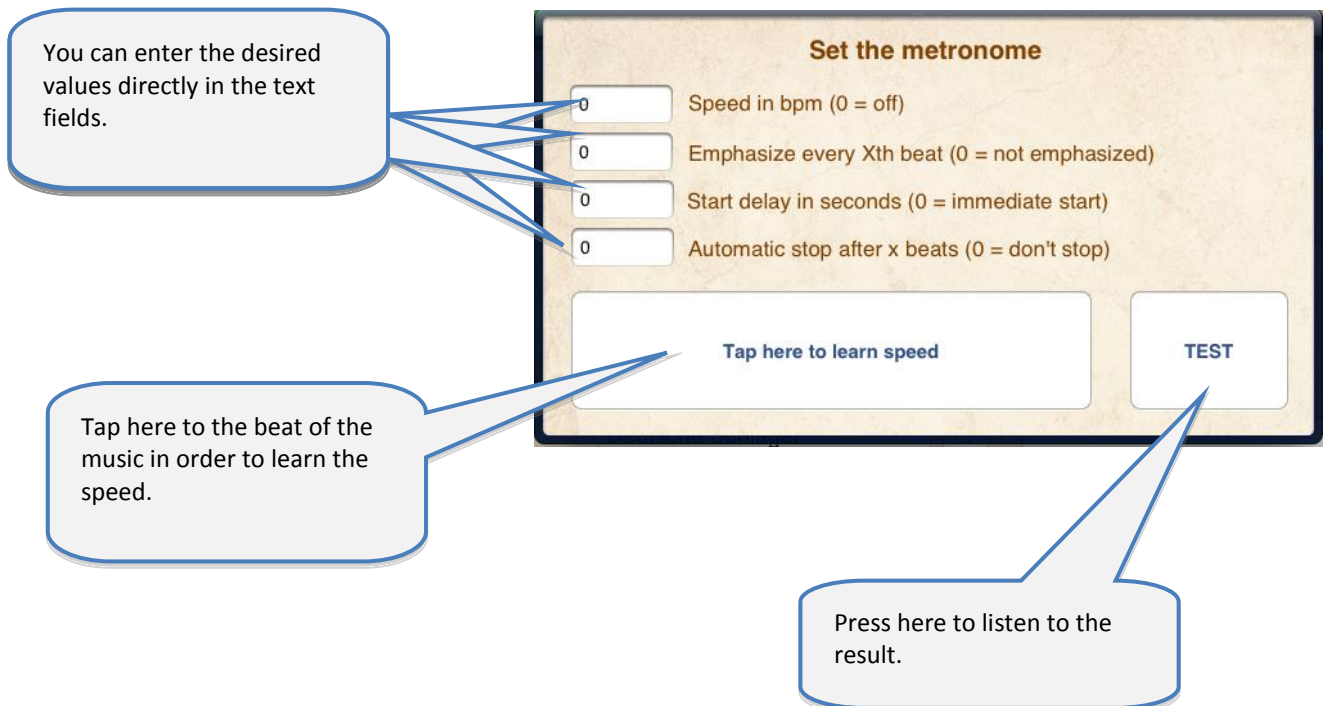
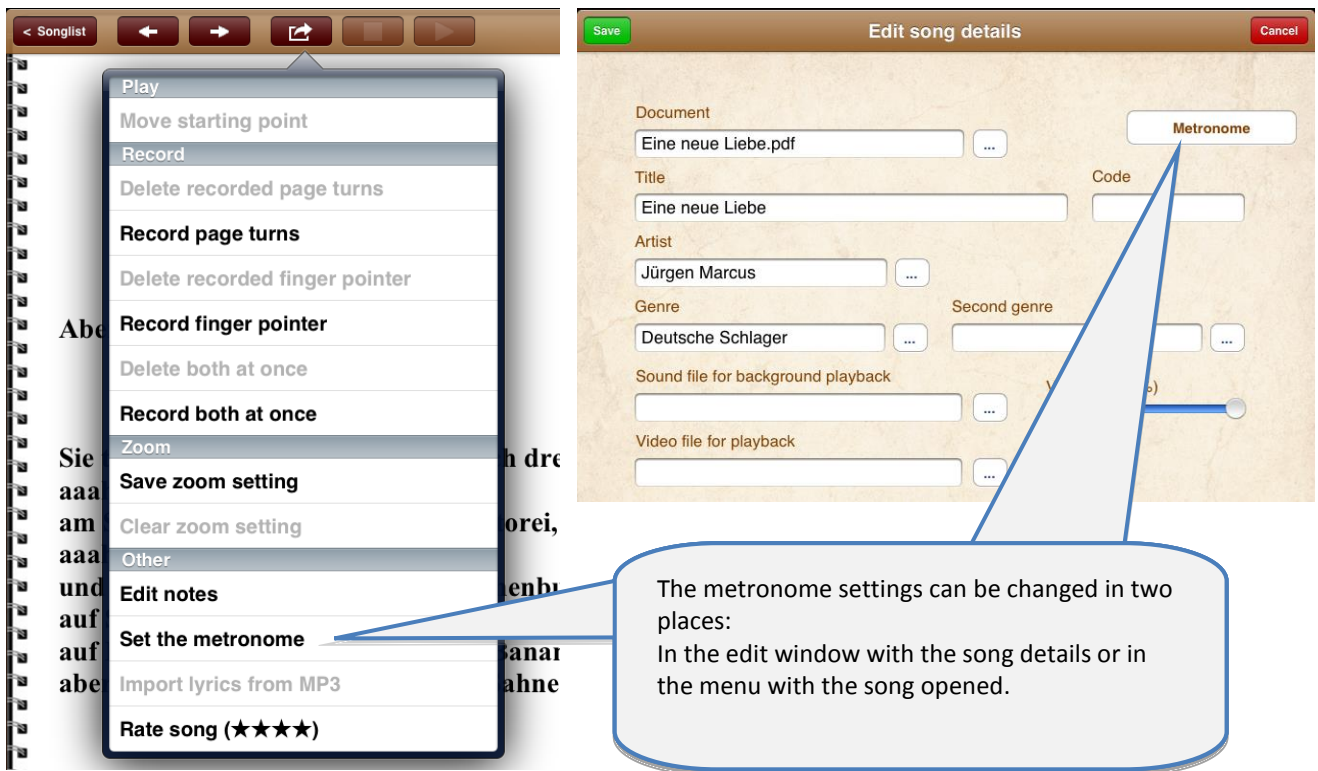
When you select a song in the list, the list disappears and the button in the toolbar is set to this song. You can then jump to the next song by pressing this button.

Depending on the settings, the next song will open automatically when the playback of the current song ends.

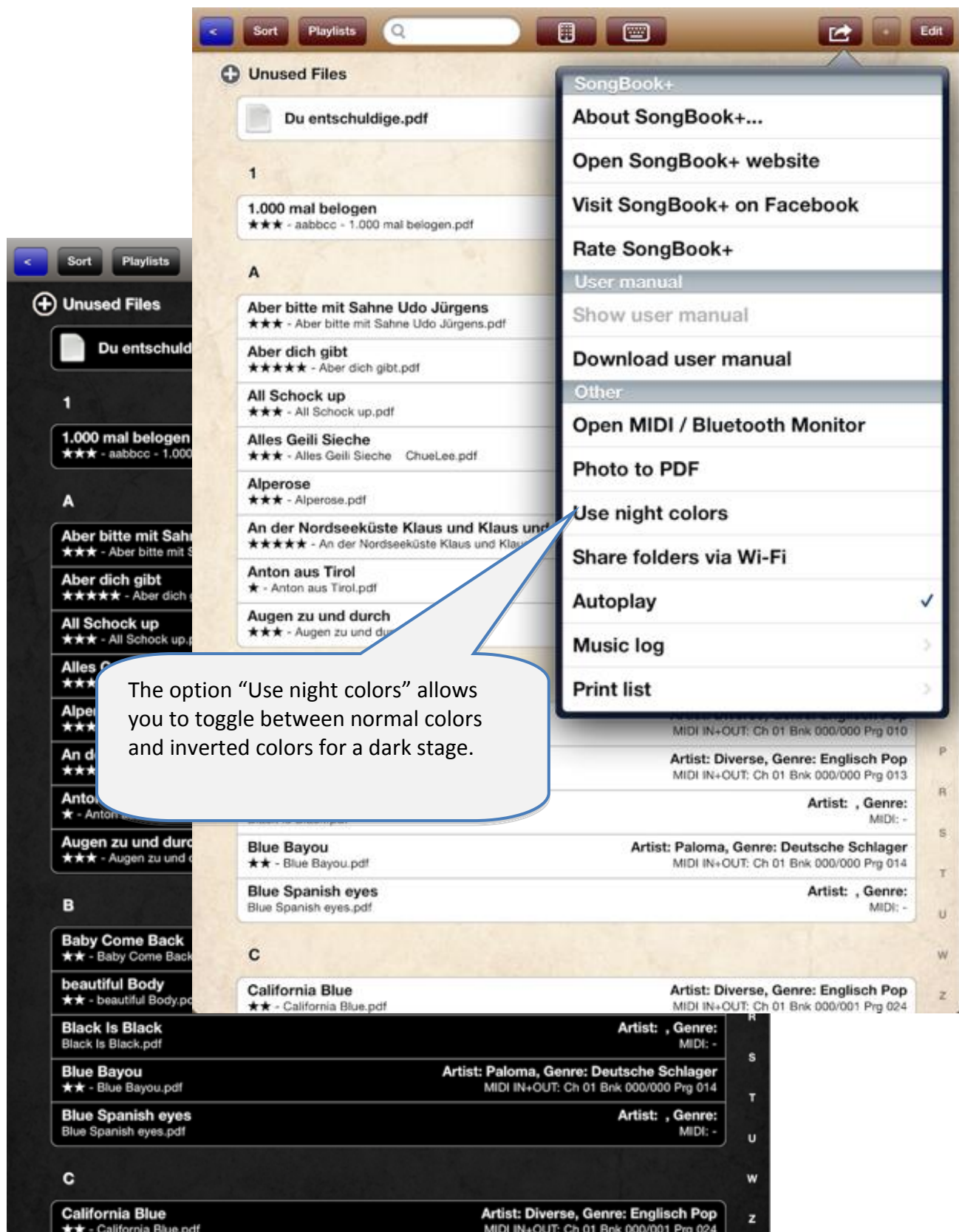
Tapping this button opens a list with the same content in the same order as selected in the song list in the main overview



8 Use of the metronome



9 Use of night colors



10 Record page turns automatically

In the document display, first press the "Action" button, then select "Page / Finger pointer" and finally press "Record page turns".

Record page turns

Press the record button below to start recording page turns.
(To cancel tap outside of this window.)

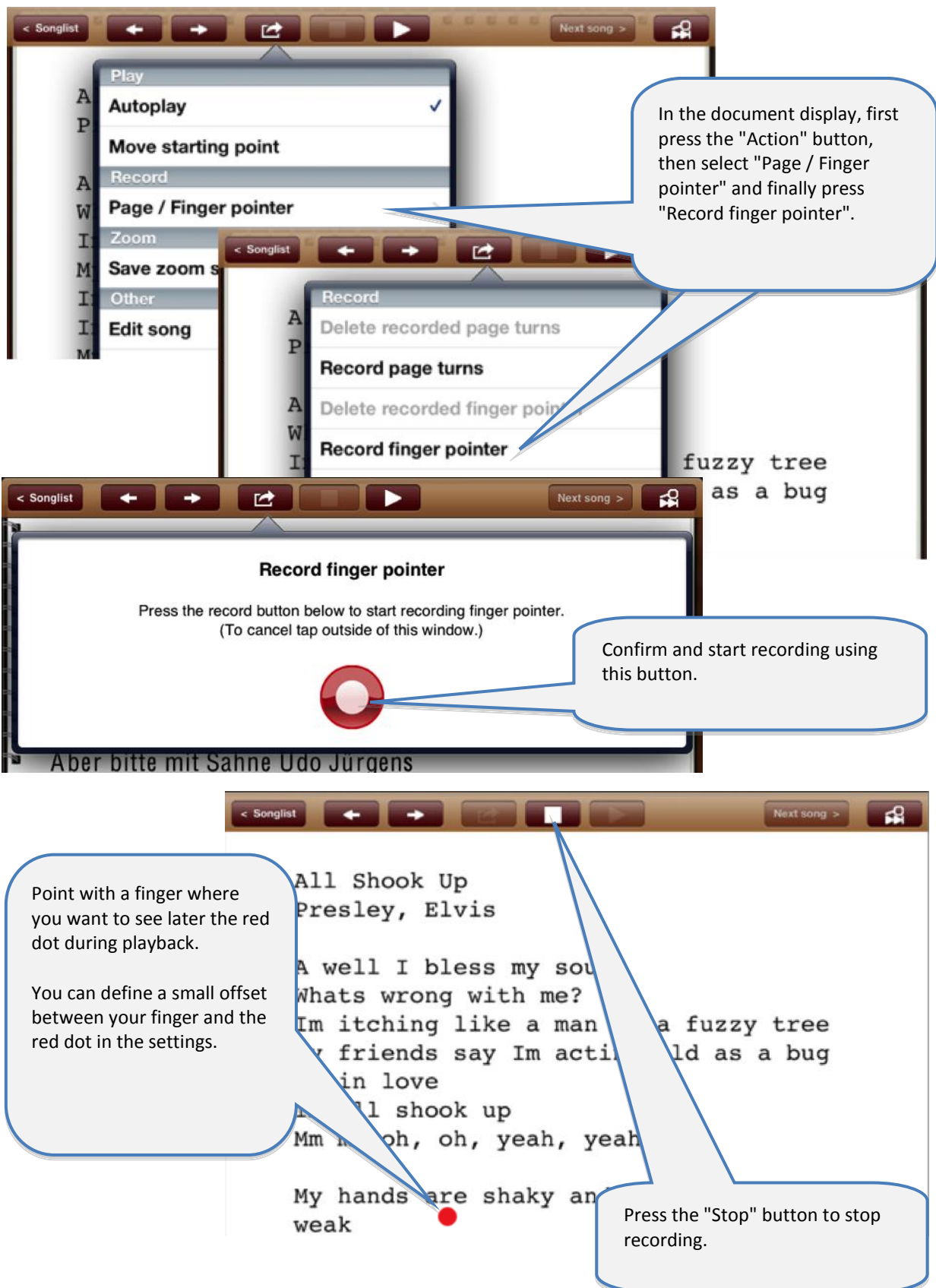
Confirm and start recording using this button.

Use the arrow buttons or swipe your finger to scroll.
You can also use a foot pedal to show the next page.

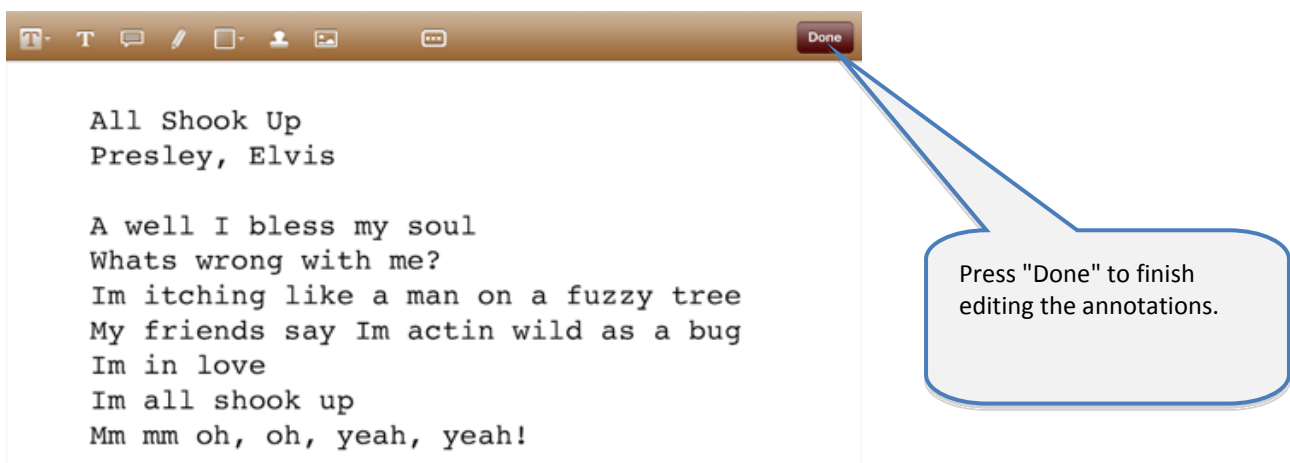
Important note:
Page turns are always recorded in full page, even if you have configured SongBook+ for scrolling instead of page turns.
SongBook+ then calculates the right speed for scrolling.

Press the "Stop" button to stop recording.

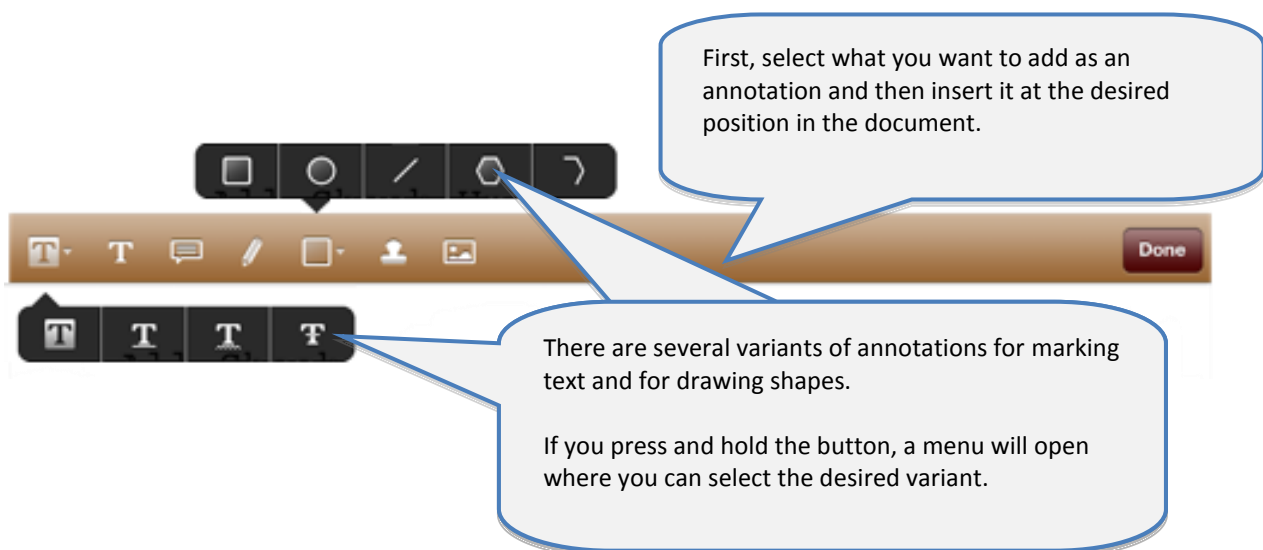
11 Record finger pointer in the "Karaoke style"



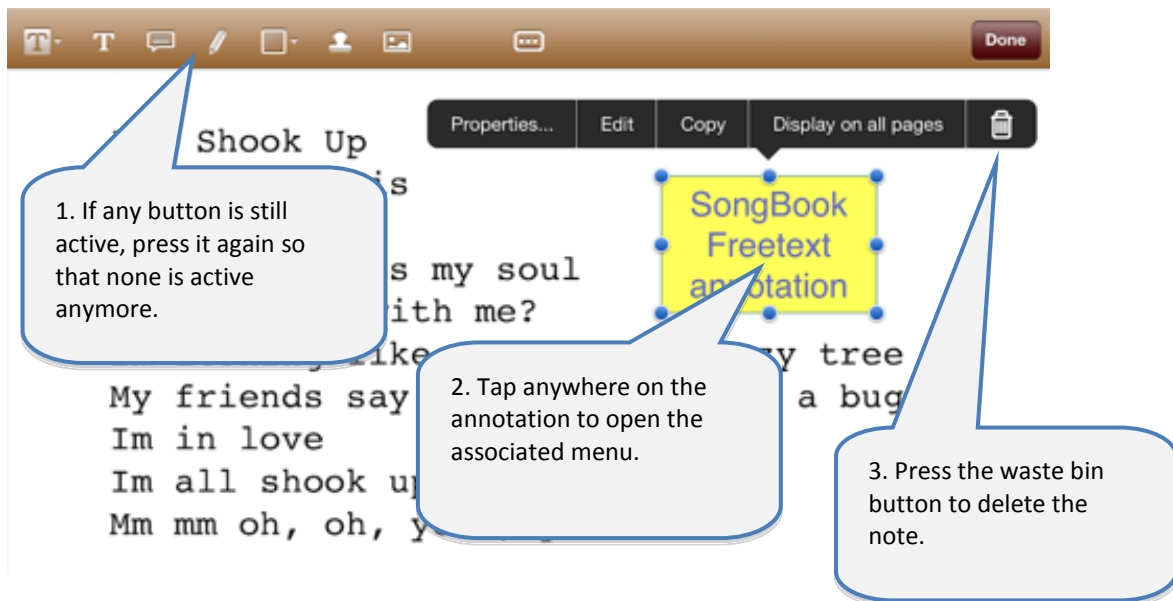
12 Insert / edit / delete annotations



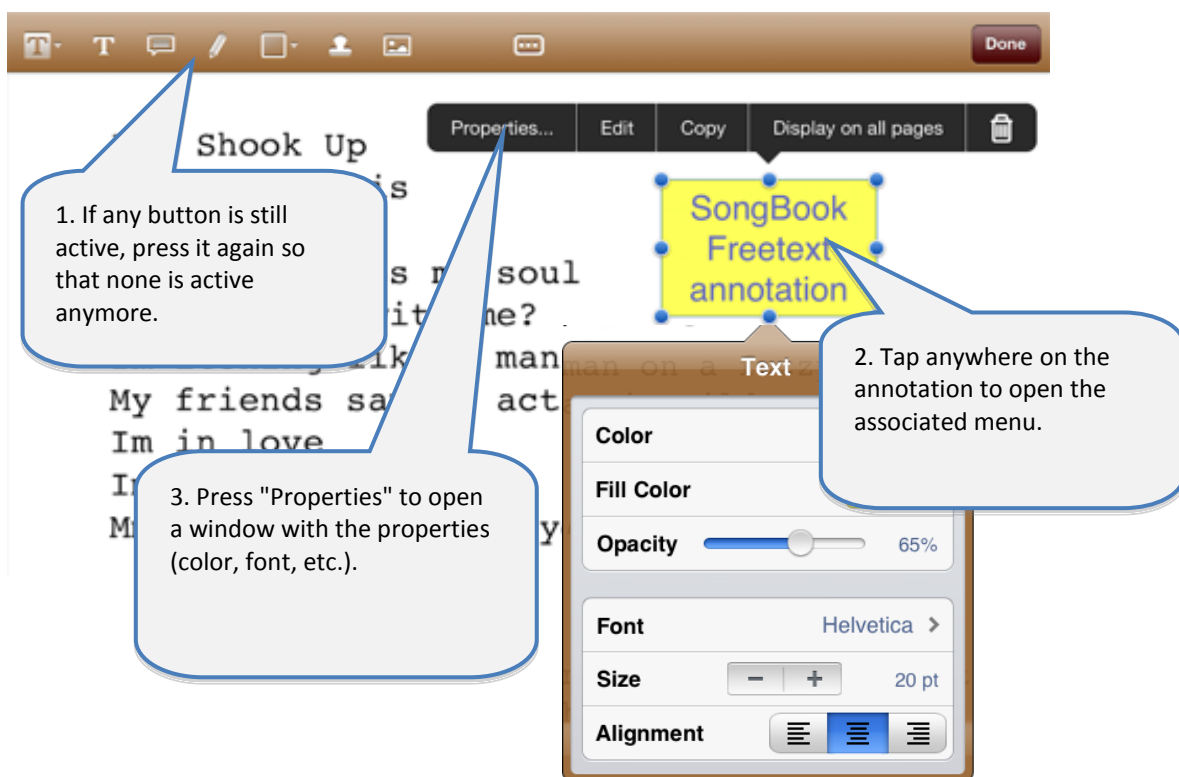
12.1 Insert annotations



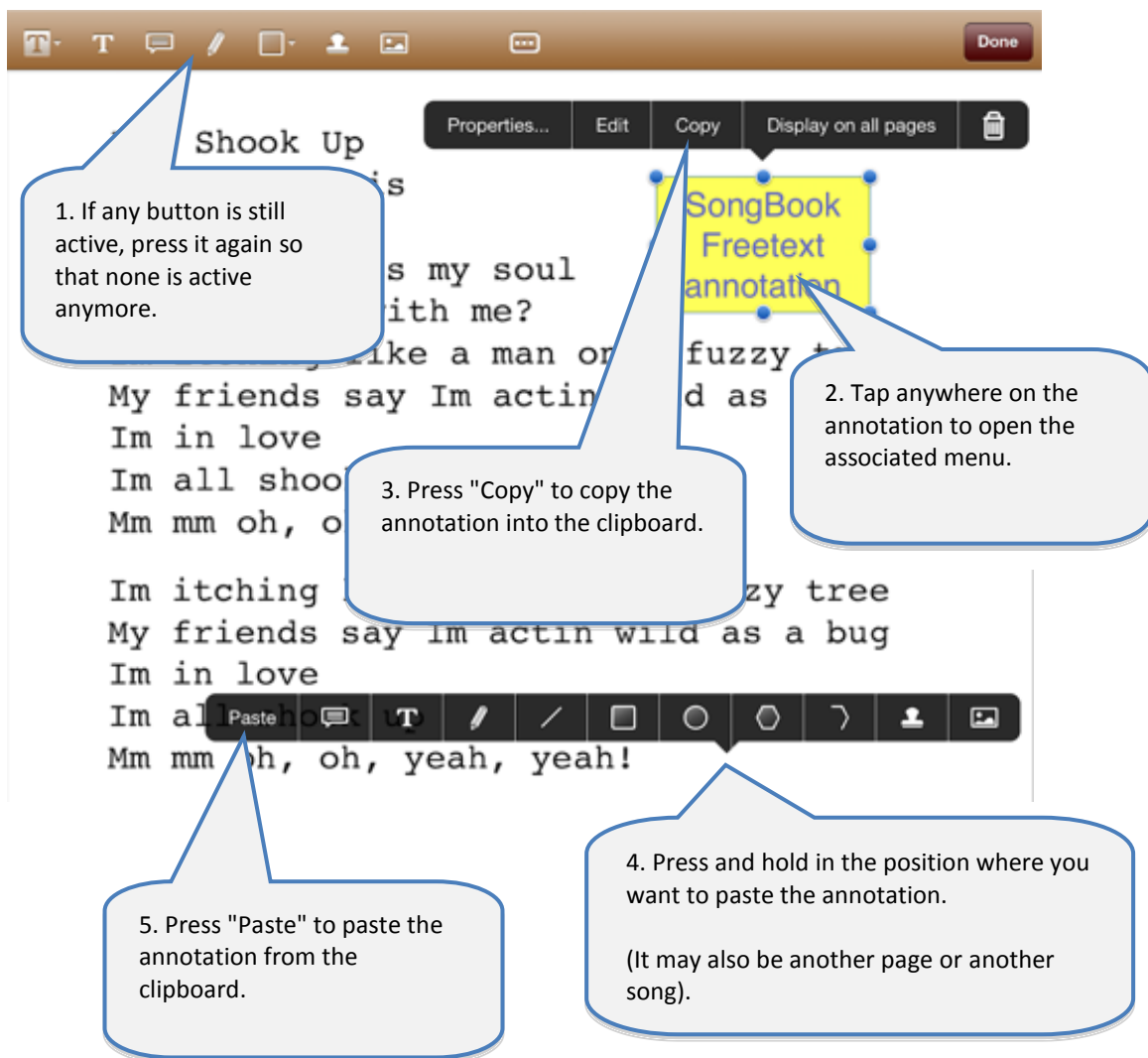
12.2 Delete annotations



12.3 Edit annotations



12.4 Copy annotations



12.5 Save frequently used annotations

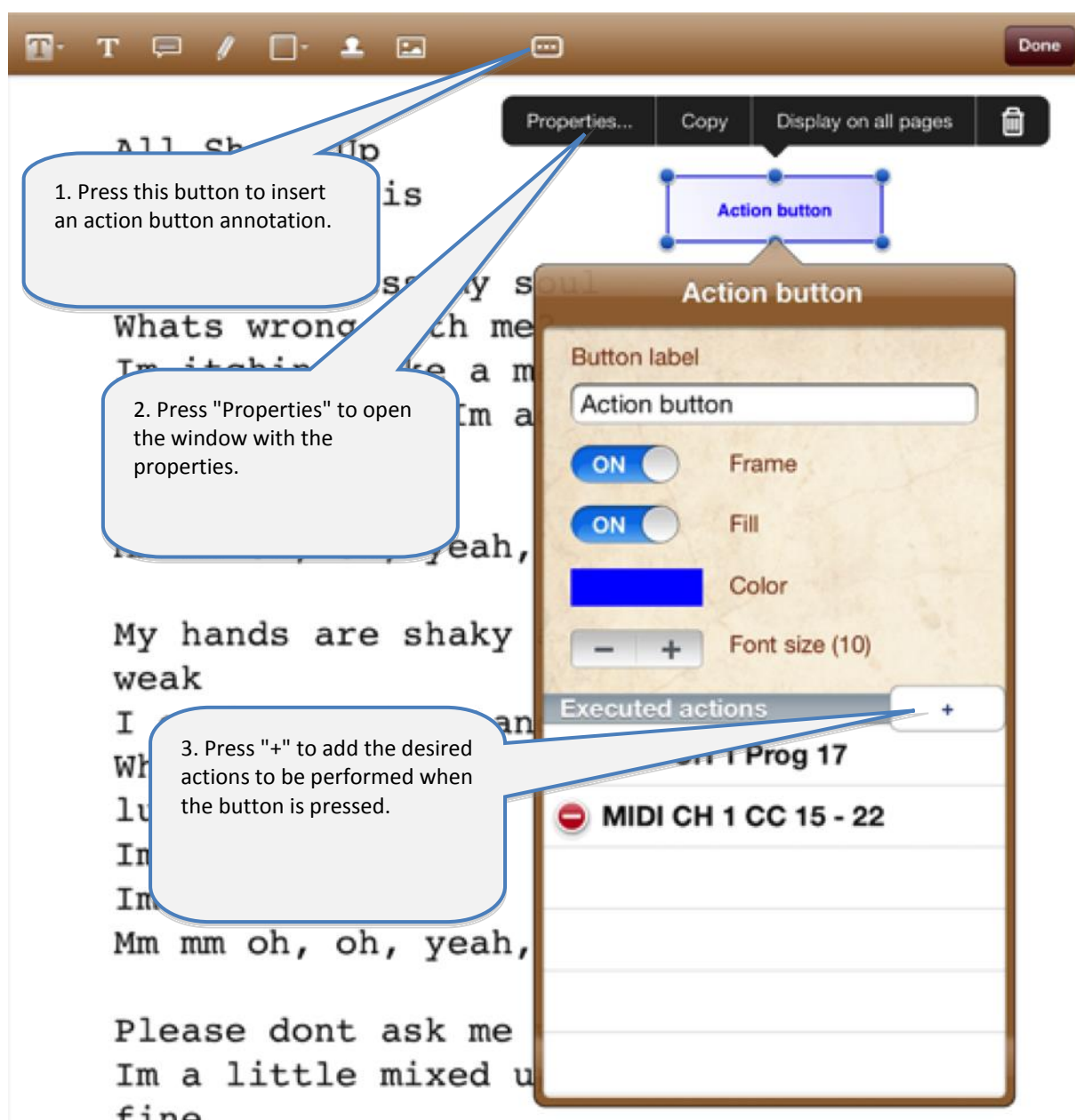


12.6 Action button annotations

Action button annotation is a very special annotation.

Using this feature you can insert a button anywhere in the document and configure different actions to be performed when it's tapped.

Currently, the available functions are jumping to a specific page or sending different MIDI commands.



13 Use playlists

13.1 Select an existing playlist

The first screenshot shows the 'Playlists' menu. A callout bubble points to the 'Playlists' button in the top bar, stating: '1. Press „Playlists“.' Another callout bubble points to the 'Meine erste Playliste' option in the menu, stating: '2. Select the playlist you want to use.'

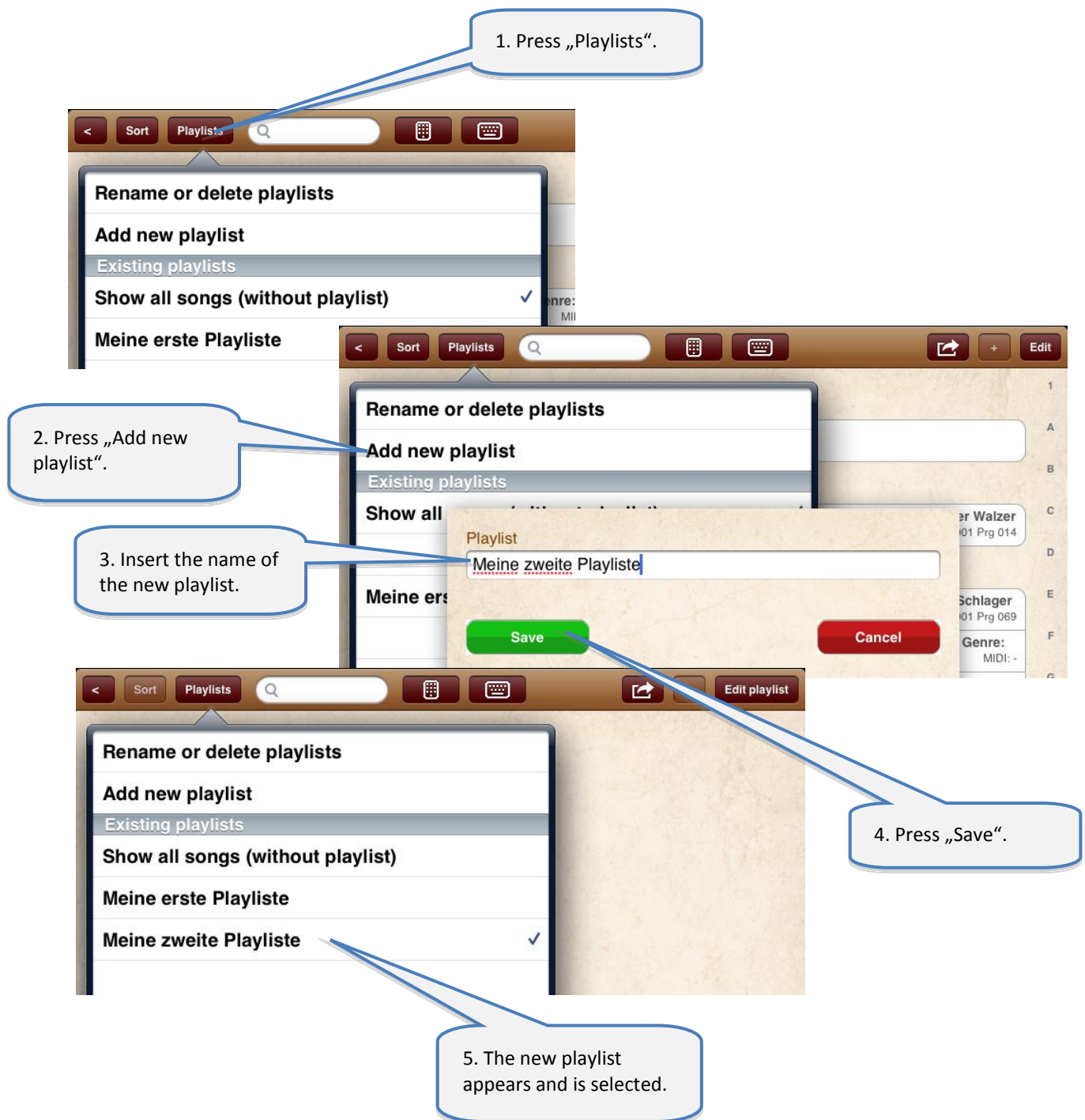
The second screenshot shows the 'Meine erste Playliste' screen. A callout bubble points to the playlist title, stating: '3. The title of the selected playlist is displayed here.' Another callout bubble points to the list of songs, stating: '4. Now the list contains only the songs of the selected playlist.'

Playlist: Meine erste Playliste	
Aber bitte mit Sahne Aber bitte mit Sahne Udo Jürgens.pdf	Artist: Udo Jürgens, Genre: Deutsche Schlager MIDI IN: Ch 01 Bnk 001/001 Prg 069
Alperose Alperose.pdf	Artist: Polo Hofer, Genre: Mundart MIDI IN: Ch 01 Bnk 000/000 Prg 004
An der Nordseeküste An der Nordseeküste Klaus und Klaus.pdf	Artist: Klaus und Klaus, Genre: Deutsche Schlager MIDI IN: Ch 01 Bnk 000/001 Prg 058
BlaBlaBla BlaBlaBla.pdf	Artist: , Genre: MIDI: -
Blue Bayou Blue Bayou.pdf	Artist: Paloma, Genre: Deutsche Schlager MIDI IN: Ch 01 Bnk 000/000 Prg 014

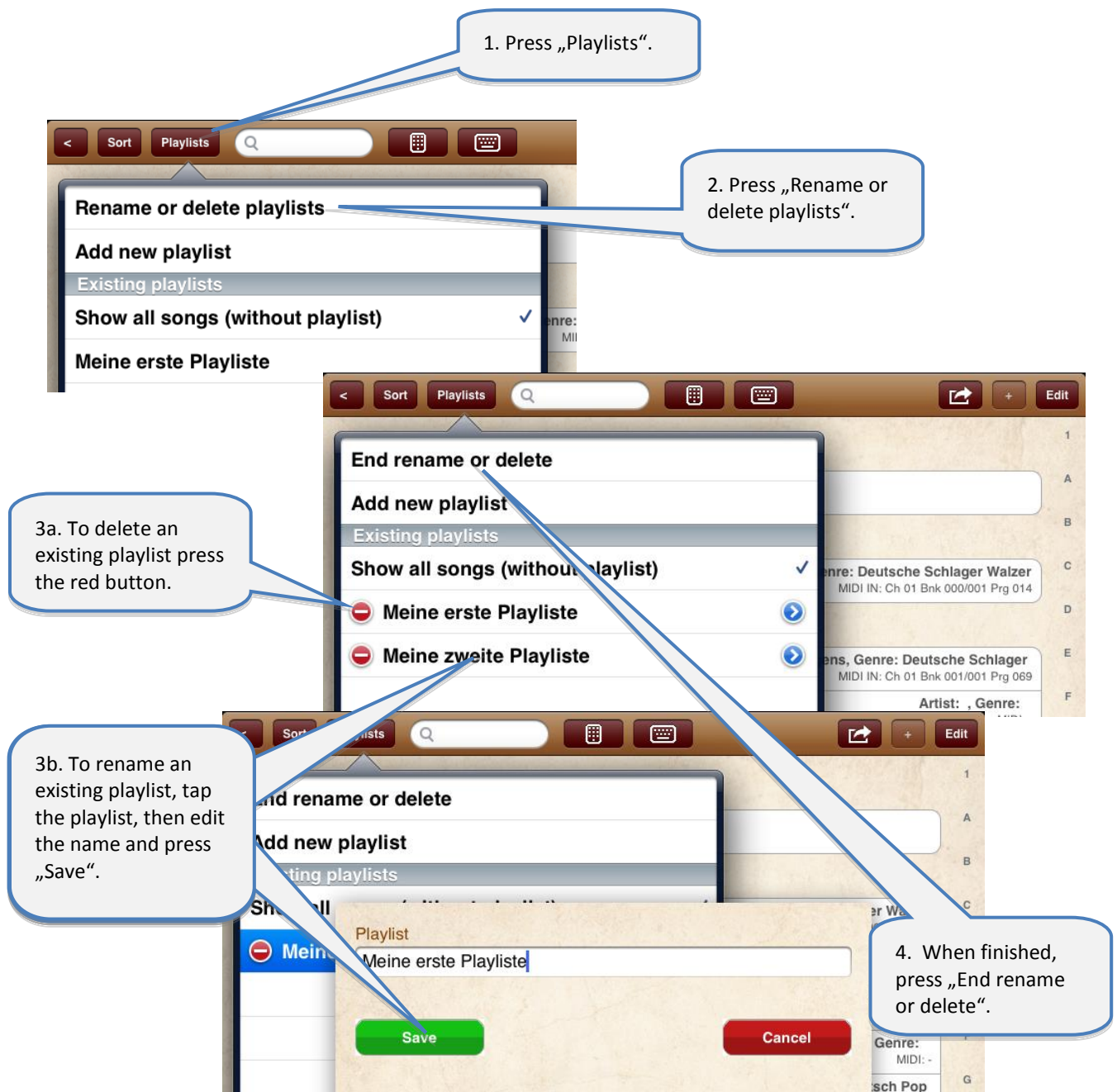
Attention:

If a playlist is selected, the „Edit“ button is no longer used to edit the songs but to edit the content of the playlist!

13.2 Add a new playlist



13.3 Rename or delete playlists



13.4 Edit the content of the playlist

Press „Edit playlist“ to start editing when the playlist is active.

While editing the songs in the playlist, you can sort and filter the existing songs to find the songs you want to add to the list.

Press the red „minus“ button to remove a song from the playlist.

Press the green „plus“ button to add a song to the playlist. The „plus“ button disappears and the song appears as the last song in the playlist above.

Press „Done“ when you finished editing.

To change the order of the songs, drag and drop a song on this symbol.

Playlist: Meine erste Playliste

Song	Artist	Genre	MIDI IN
Aber bitte mit Sahne	Udo Jürgens	Deutsche Schlager	Ch 01 Bnk 001/001 Prg 069
Alperose	Polo Hofer	Mundart	Ch 01 Bnk 000/000 Prg 004
An der Nordseeküste	Klaus und Klaus	Deutsche Schlager	Ch 01 Bnk 000/001 Prg 058
BlaBlaBla			MIDI: -
Blue Bayou	Paloma	Deutsche Schlager	Ch 01 Bnk 000/000 Prg 014

1.000 mal belogen
1.000 mal belogen.pdf
Artist: Diverse, Genre: Deutsche Schlager Walzer
MIDI IN: Ch 01 Bnk 000/001 Prg 014

Aber bitte mit Sahne
Aber bitte mit Sahne Udo Jürgens.pdf
Artist: Udo Jürgens, Genre: Deutsche Schlager
MIDI IN: Ch 01 Bnk 001/001 Prg 069

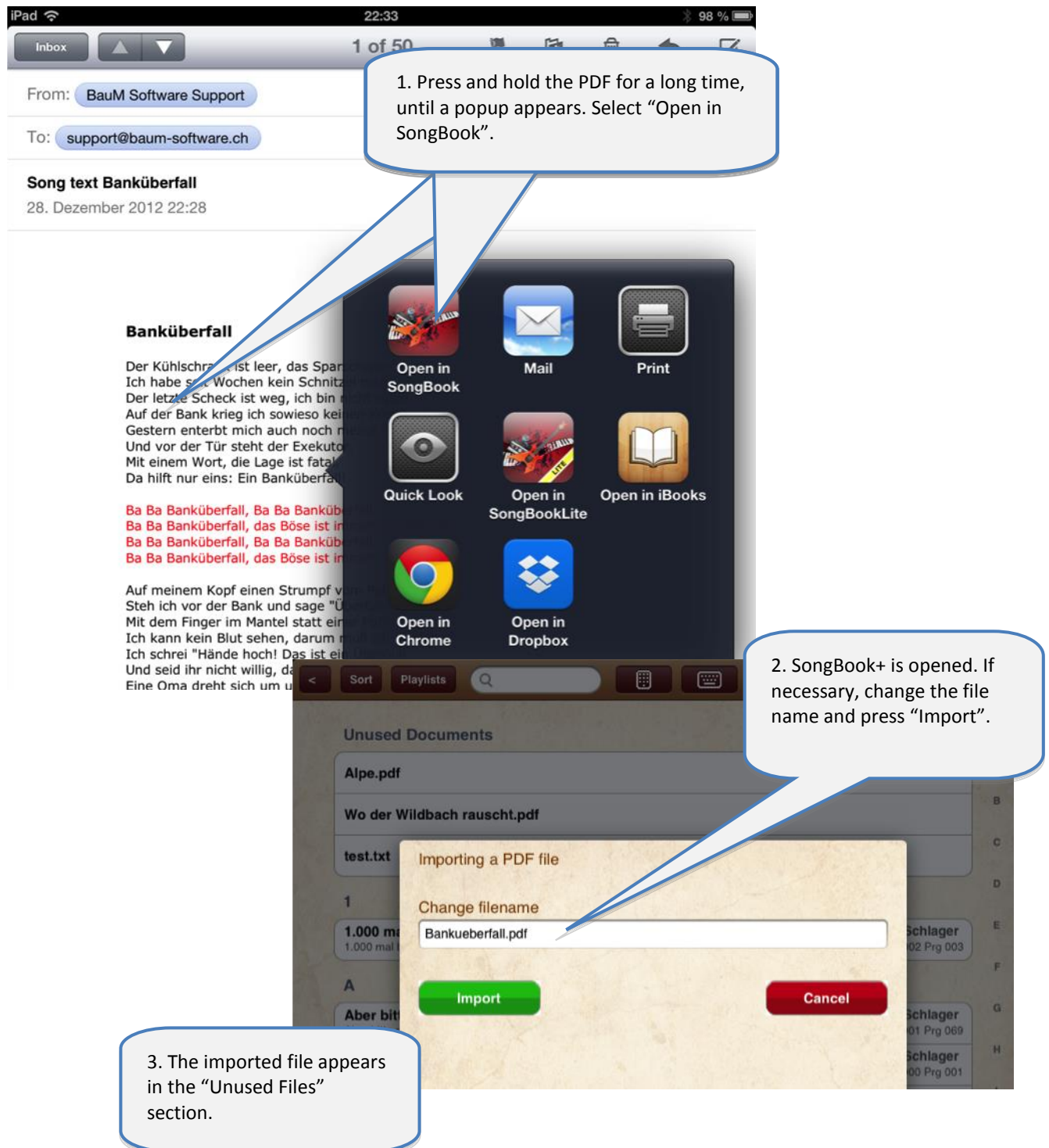
Aber Dich gibt
Artist: Udo Jürgens, Genre: Deutsche Schlager
MIDI IN: Ch 01 Bnk 001/001 Prg 069

Alles Geili Sieche
Alles Geili Sieche ChueLee.pdf
Artist: Diverse, Genre: Deutsch Pop
MIDI IN: Ch 01 Bnk 001/001 Prg 071

14 Import files from mail or other applications

You can import PDF, music or video files from all other apps that allow creating or downloading such files and support an “Open in...” feature to pass the PDF to another app.

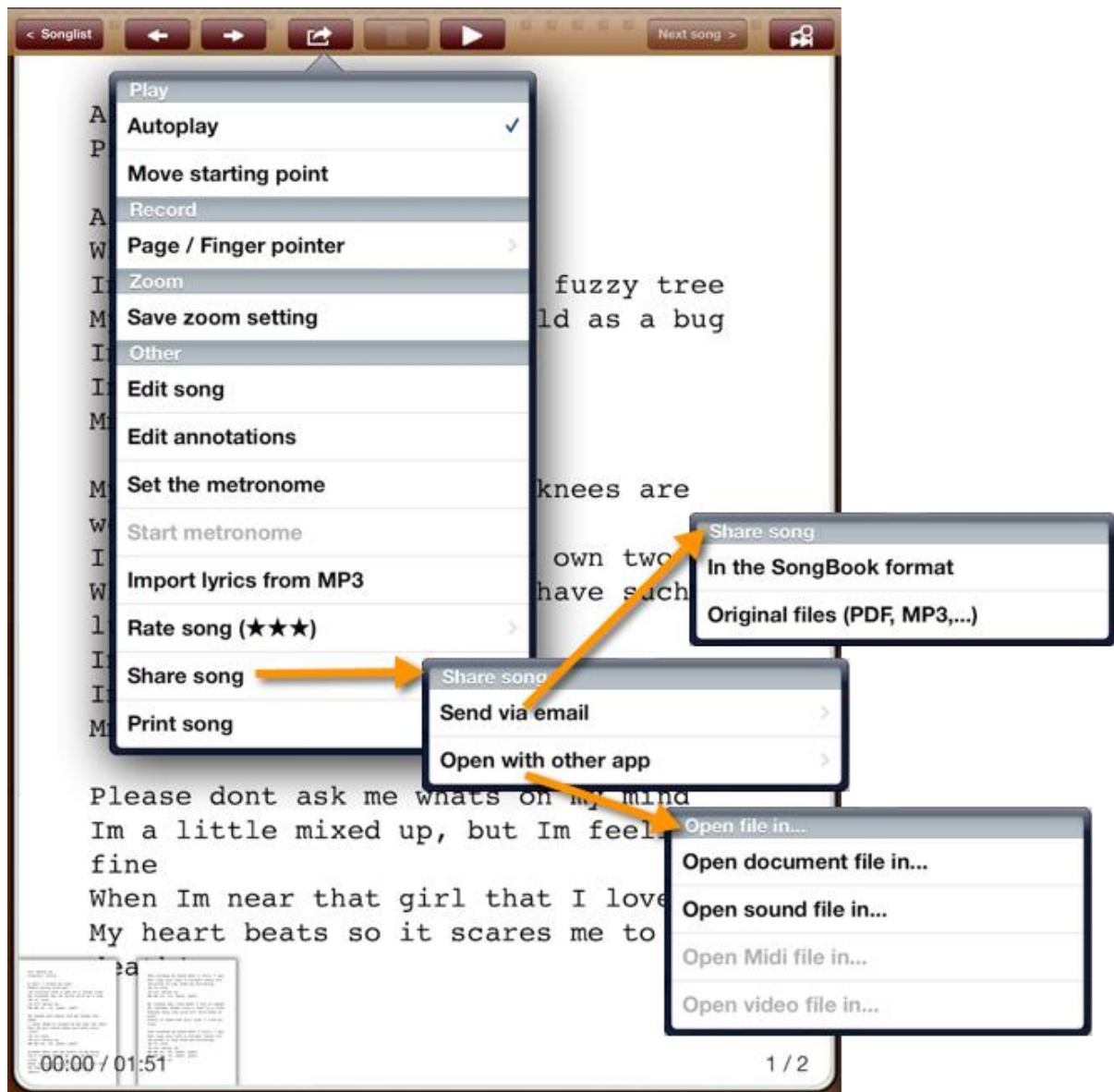
The following picture shows as sample how to import a PDF from an email attachment:



15 Share songs or files (export)

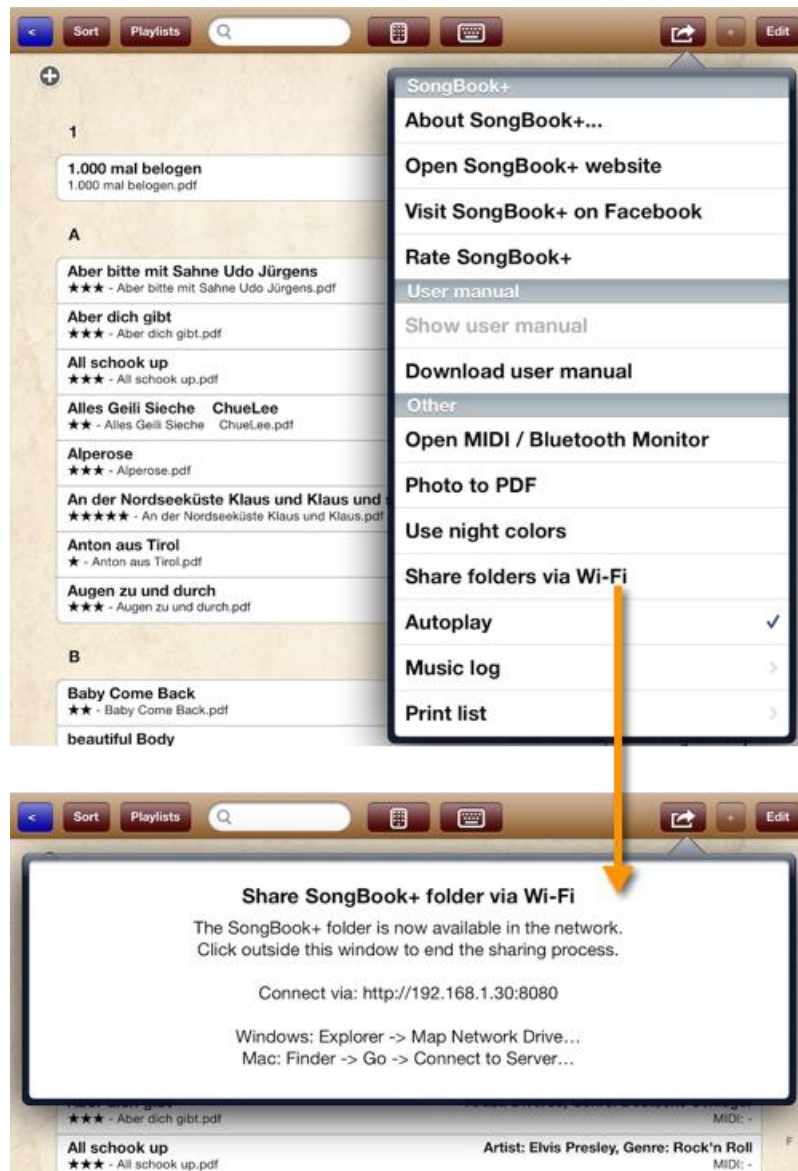
Using the "Share song" feature, you can:

- email an entire song to another SongBook user and import it there again
- email individual files (pdf, mp3, ...) of the song or transfer them to another app (e.g. Dropbox)



16 Share SongBook+ folder via Wi-Fi

You can temporarily share the SongBook+ folder via Wi-Fi and then wirelessly access it from a computer without iTunes on it.



Note:

The method can also be used to make a backup of the database file (SongBookMidi.sqlite). However, it is impossible to copy the database file back to the iPad! For more information on data backup and recovery, see chapter 23.

17 Import lyrics from MP3 file

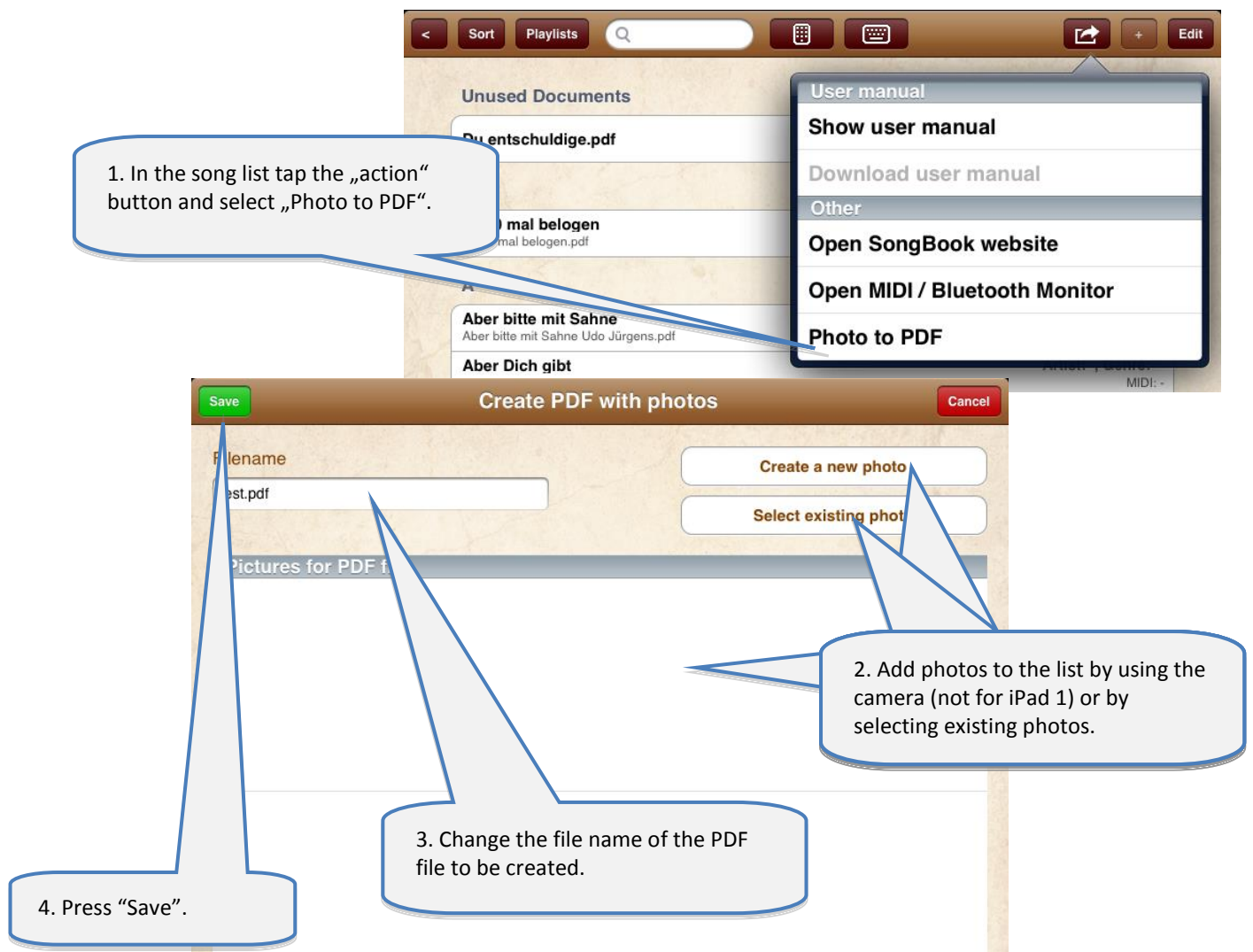
17.1 Add a song without PDF and select MP3



17.2 Create PDF from lyrics in MP3



18 Scan lyrics on paper with built-in camera



19 Use the MIDI features

19.1 Connecting iPad to MIDI

To connect the iPad to MIDI you need the "Apple iPad Camera Connection Kit" to have a USB interface on the iPad and then connect a USB-to-MIDI adapter to it.

It is also recommend to use an active USB hub, as the power from the iPad may be insufficient for the electronics of the USB-to-MIDI adapter.

The USB-to-MIDI adapter must be compatible to Apple's CoreMIDI.



Alternatively you can also use the IO Dock from Alesis or the iRig MIDI Adapter from IK Multimedia.

In contrast to "Apple iPad Camera Connection Kit", they offer the advantage that the iPad can also be supplied with power during the Midi operation.

19.2 Open song text on incoming MIDI commands

SongBook+ can listen for *ProgramChange* commands on the MIDI interface and then open a song. These commands normally select an instrument.

A typical use of this feature is that *ProgramChange* commands are sent from within a MIDI style, from within a played MIDI file, or from the keyboard when a registration was selected. SongBook+ then opens the corresponding song text. (A MIDI style can resend the same *ProgramChange* over and over again while looping; this will not lead to a problem.)

SongBook+ opens a song text, if it received *BankSelect* commands and a *ProgramChange* command as configured in the „Edit song detail“ window.

Please note that SongBook+ uses values from 0 to 127. If your keyboard uses numbers from 1 to 128 instead, you must subtract 1 to get the value to configure in SongBook+.

Use this button if you want to learn a command instead of configuring it using the wheels.

Learn a MIDI command now

Auto open on MIDI command

ON

Send MIDI command on open

ON

BankSelect		
High(MSB)	Low(LSB)	PG change
000	003	014
001	004	015
002	005	016
003	006	017
	007	018

Settings

Location Services On

General

Twitter

Safari

SongBook MIDI settings

MIDI Input / Output

Channel 1

Wireless MIDI server

Activate OFF

Restart MIDI Restart Bluetooth

MIDI / Bluetooth log

21:52:38.496: **** chan 01 program change 1/5/16 triggers song: Aber bitte mit Sahne
21:52:38.494: **** chan 01 program change 1/5/16
21:52:38.492: Channel 01: program change 16
21:52:38.490: Channel 01: bank select low 5
21:52:38.486: Channel 01: bank select high 1

With these settings, the song will open if a MIDI device sends the command to select instrument 16 on bank 1 / 5 on MIDI channel 1.

Please use the built-in MIDI monitor to find out what is actually received by the MIDI interface if it doesn't work as expected.

19.3 Send MIDI commands when song text is opened

You can also enable SongBook to send MIDI commands when you open a song text.

A typical use of this feature is to configure external devices like a keyboard upon selecting a song.

There are different ways to send MIDI commands:

19.3.1 Send the configured BankSelect/ProgramChange commands

SongBook+ sends the *BankSelect* and *ProgramChange* commands as configured in the „Edit song detail“ window, if the switch „Send MIDI command on open“ is set to on.

The MIDI channel that SongBook+ is sending these commands on is the same as configured for the MIDI input.

The image shows the SongBook+ MIDI settings interface. On the left, the 'Settings' menu is visible with 'SongBook' selected. The 'MIDI settings' window is open, showing 'MIDI Input / Output' with 'Channel' set to 1. Below this, 'Wireless MIDI server' and 'Wireless MIDI client' are both set to 'OFF'. A callout box points to the 'Send MIDI command on open' toggle, which is set to 'ON'. Another callout box points to the 'Channel' dropdown, which is set to 1. A third callout box points to a table of BankSelect and Program Change commands.

BankSelect
High(MSB) Low(LSB) PG change

000	003	014
001	004	015
002	005	016
003	006	017
	007	018

With these settings a BankSelect High 1, a BankSelect Low 5 and a Program Change 16 message will be sent on MIDI output on Channel 1 as configured in the program settings.

19.3.2 Send the contents of a MIDI file upon opening the song

SongBook sends the contents of a MIDI file upon opening the song, if a .mid file with exactly the same file name as the .pdf file extended with “_open.mid” exists.

(i.e. MySong.pdf → MySong_open.mid)

Only MIDI files of type 0 (single track) are allowed. All commands are sent at once, timing information is ignored and therefore this feature cannot be used to send music to the MIDI output, but only commands to configure the environment.

19.3.3 Send other configurable MIDI commands

Using the "Actions upon opening" button in the editing window of the song, you can define optional MIDI commands to be sent upon opening the song.

19.4 Send MIDI commands when the song is started

19.4.1 Send the contents of a MIDI file upon starting the song

SongBook sends the contents of a MIDI file upon starting the song, if a .mid file with the same file name as the .pdf file extended with “_start.mid” exists.

(i.e. MySong.pdf → MySong_start.mid)

Only MIDI files of type 0 (single track) are allowed. All commands are sent at once, timing information is ignored and therefore this feature cannot be used to send music to the MIDI output, but only commands to configure the environment.

19.4.2 Send MIDI Start when the song was started

You can configure in the settings, if SongBook should send MIDI Start upon starting the song.

19.4.3 Send other configurable MIDI commands

Using the "Actions upon starting" button in the editing window of the song, you can define optional MIDI commands to be sent upon starting the song.

19.5 Send MIDI commands when the song is stopped

19.5.1 Send the contents of a MIDI file upon stopping the song

SongBook sends the contents of a MIDI file upon stopping the song, if a .mid file with the same file name as the .pdf file extended with “_stop.mid” exists.

(i.e. MySong.pdf → MySong_stop.mid)

Only MIDI files of type 0 (single track) are allowed. All commands are sent at once, timing information is ignored and therefore this feature cannot be used to send music to the MIDI output, but only commands to configure the environment.

19.5.2 Send MIDI Stop when the song was stopped

You can configure in the settings, if SongBook should send MIDI Stop upon stopping the song.

19.5.3 Send other configurable MIDI commands

Using the "Actions upon stopping" button in the editing window of the song, you can define optional MIDI commands to be sent upon stopping the song.

19.6 Send MIDI commands at a button touch

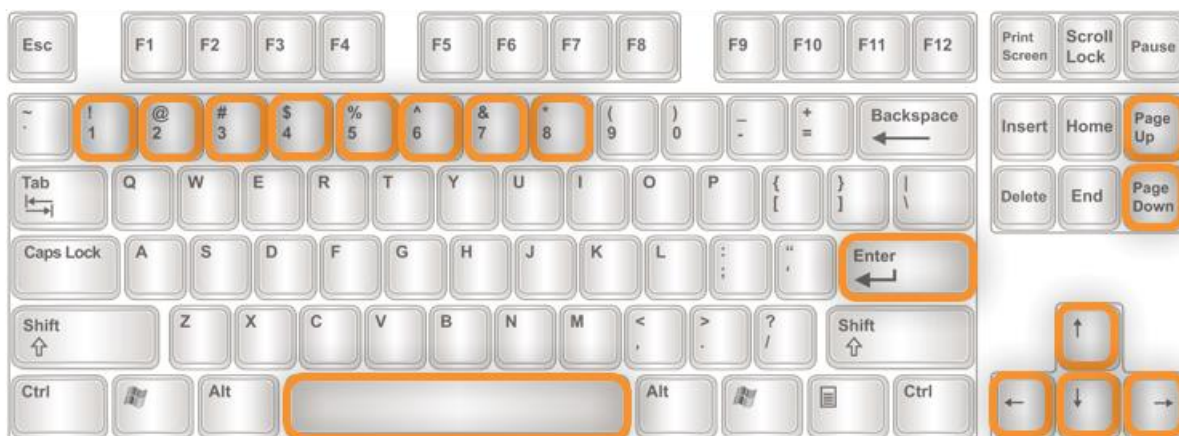
You can also send freely configurable MIDI commands from the song lyrics or musical notes at a single button touch with the help of the special "Action button" annotation.

To learn how you can insert and configure an action button annotation, see chapter [12.6](#).

20 Using foot pedals

20.1 Foot pedals that simulate an external keyboard

SongBook+ supports all foot pedals that are able to simulate an external keyboard and can send one or more of the following keys:



In the application settings you can enable the use of foot pedals and assign the keys to the following actions:

- Do nothing
- Go one page forward/backward
- Press the Start/Stop/Pause/Continue button
- Jump to the next song
- Jump back to the song list
- Open song preselection list
- Start/pause/continue scrolling
- Scroll faster/slower
- Go the whole/half/third/quarter page forward or backward
- Turn automatic playback on/off/toggle
- Start/stop the metronome

In the Midi and Bluetooth monitor you can see which keys your foot pedal is sending.

To use this feature you can use e.g. the following foot pedals:

- BT-105 by Airturn (www.airturn.com) connected via Bluetooth
- PageFlip by Cicada (www.pageflip.com) connected via Bluetooth
- Footime by Bili's (www.bilila.com) connected via USB Camera Adapter

20.2 Foot pedals that send MIDI commands

SongBook+ supports all foot pedals that can send one or more of the following MIDI commands:

- MIDI Start (used by Alesis io Dock pedal 1)
- MIDI Stop (used by Alesis io Dock pedal 2)
- MIDI Pause
- MIDI Continue
- MIDI Control-Change 63 to value (used by Alesis io Dock pedal 2)
- MIDI Control-Changes to an arbitrary value

In the application settings you can enable the use of MIDI foot pedals (*) and assign the keys to the following actions:

- Do nothing
- Go one page forward/backward
- Press the Start/Stop/Pause/Continue button
- Jump to the next song
- Jump back to the song list
- Open song preselection list
- Start/pause/continue scrolling
- Scroll faster/slower
- Go the whole/half/third/quarter page forward or backward
- Turn automatic playback on/off/toggle
- Start/stop the metronome

Remark Alesis io Dock: The Alesis io Dock alternately sends MIDI Start and MIDI Stop on the first foot pedal. If you use this foot pedal you should assign the same action for MIDI Start and MIDI Stop.

Remark iRig BlueBoard: *The iRig BlueBoard alternately sends ControlChanges on the value 0 or 127. If a button always performs the same action each time it is pressed, you must use two of the optionally configurable ControlChanges per button in SongBook+, one to respond when changing to 0, and another to respond when changing to 127, and assign the same action to both of them.*

In the Midi and Bluetooth monitor you can see which commands your foot pedal is sending.

(*) Of course the MIDI commands do not entirely have to come from a foot pedal. They can be sent by any connected MIDI device.

21 Connecting multiple iPads with SongBook+

You can connect multiple iPads with SongBook+, either via Bluetooth (wirelessly) or MIDI (by cable or wirelessly).

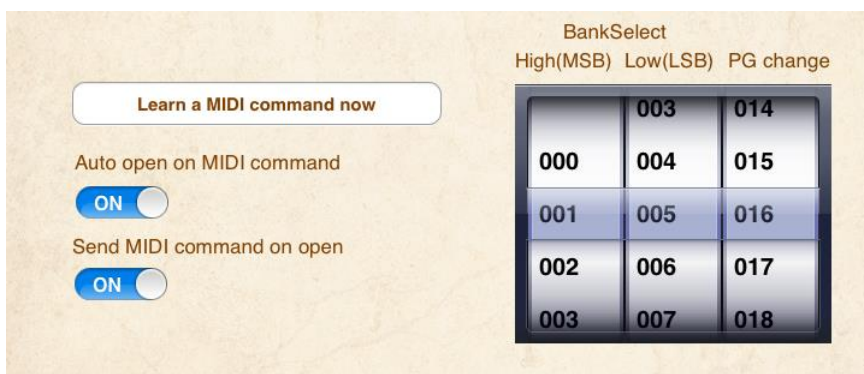
One SongBook must be configured as server and all others as clients.

This allows you to synchronize the following actions:

- Selecting a song
- Preselecting a song
- Turning pages
- Start button
- Stop button

If you want to build multiple SongBook groups using Bluetooth connection or protect yourself against connections from external SongBooks, you can set a common Bluetooth keyword.

If the feature is enabled in the application settings, the devices connect automatically upon starting SongBook+.



In order to synchronize the opening of songs on multiple iPads, the following three numbers in the song details must match on all iPads (even if you don't use MIDI at all).

Note:

Wireless MIDI connection additionally requires a WLAN router.

22 Use of multiple books

If you want to use multiple books, activate the switch „Activate multiple books “ in the settings of SongBook+.

You will then see five colored tabs on the book cover that can be used to open the desired book.

Book labels or tabs can be changed in the settings of SongBook+.



The list of the input artists and genres is shared by all books.

23 Backup and restore your data

The following chapters show you how to save your data to your computer and how to restore the saved data to SongBook.

With the same steps it is also possible to transfer your data from SongBook+ lite to the full version of SongBook+.

23.1 Backup your data

To save your data from SongBook to your computer, connect your iPad to the computer, start iTunes and follow the steps below:

1. If the iTunes Store is still shown in iTunes, press the "Library" button.

2. Press „iPad“.

3. Press „Apps“.

4. Scroll down to "File Sharing".

5. Select "SongBook" (or "SongBook lite").

6. Select at least the file "SongBookMidi.sqlite" (This file contains all data you have entered in SongBook+).

7. Click "Save to" and select a folder on your computer that will be used to save your data in.

Attention!
When the 2 files SongBookMisi.sqlite-wal and SongBookMidi.sqlite-shm exist, they must also be saved!
(Since operating system version iOS 7)

23.2 Restore your data from Backup

- **First, quit SongBook+ as described in chapter 24!**
If you don't do that beforehand, the restoration of data will be ineffective.
- After you have quit SongBook+, you can restore the data back to SongBook+.
- The restoration of data is carried out in the same way as if you copied other files into SongBook+. Follow the steps as described in chapter 2 and restore the "SongBookMidi.sqlite" file (and your PDFs and MP3s, if necessary) to SongBook+.
- **Attention:**
Since operating system version iOS7 the two files SongBookMidi.sqlite-wal and SongBookMidi.sqlite-shm must also be restored.
If you restore an old backup without these two files, delete these two files from the target device!

24 Quit SongBook+ or other apps completely

If you close an app using the Home button, it continues to run in the background and still requires memory that other apps may lack.

Therefore, it is highly recommended, especially before operations, to quit all these apps completely including SongBook+ and then restart SongBook+ only so that it could use as much free memory as possible.

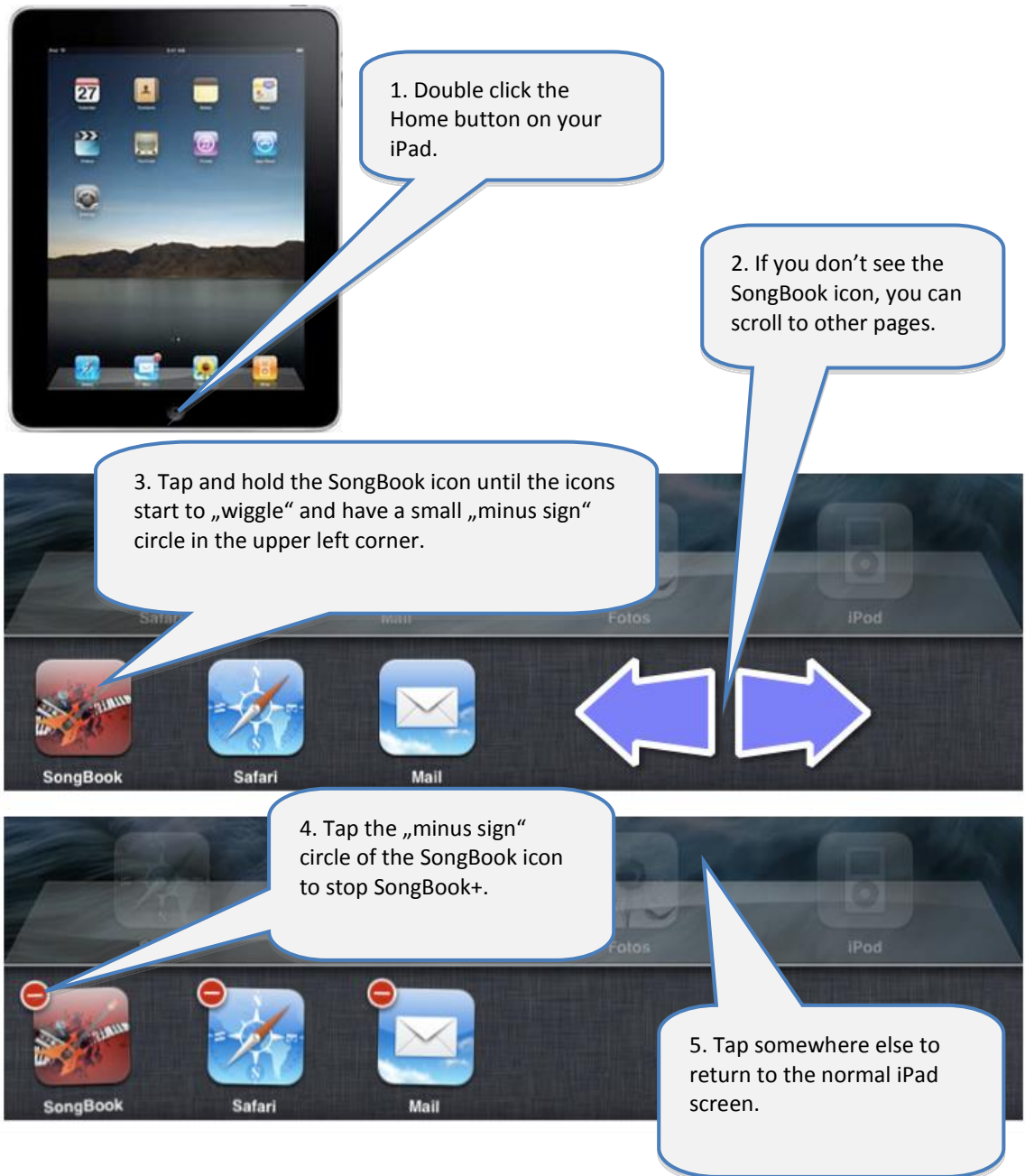
24.1 Quit the apps in iOS 7 or above

If you have a second-generation iPad or newer and/or have installed regular operating system updates on your iPad, close the apps as follows.



24.2 Quit the apps in iOS prior to iOS 7

If you have a first-generation iPad or have not installed any operating system updates on your iPad in a long time, close the apps as follows.



25 Supported file formats

25.1 Files for text or note display

Files with file extensions PDF, PNG, JPG, JPEG, TIF, TIFF, GIF, TXT are used for displaying song lyrics or musical notes.

25.2 Music files

Files with file extensions MP3, WAV, AIFF, M4A can be used for music playback.

25.3 Midi files

Files with file extensions MID, MIDI, SMF can be used for MIDI output.

25.4 Video files

Files with file extensions MOV, MP4, MPV, 3GP, M4V and the following compression standards can be used for video output directly to the iPad itself or to an external monitor or projector:

- H.264 Baseline profile level 3.0 video up to 640x480 at 30 fps
- MPEG-4 Part 2 video (Simple Profile)

26 Contribution

MIDI Kommunikation:

The MIDI communication in SongBook+ is based on sample code by Pete Goodliffe. Thank you Pete for publishing your sample code on the Internet.

See here for more information:

<http://goodliffe.blogspot.com/2010/10/using-coremidi-in-ios-example.html>

Musical symbols:

Die Musiksymbole zum Einfügen mit der Notizfunktion stammen von Linkware Graphics. Many thanks to Shirley Kaiser for publishing these symbols.

Further details can be found here:

<http://linkwaregraphics.com/music/>

27 Contact information

If you have any questions or feedback about SongBook+, please visit us on

<http://www.baum-software.ch>

Here you can find a contact form to send us a message, a list of frequently asked questions, download links for the App Store, the latest version of this document and more.