

PROFESSIONAL™ GAS WATER HEATERS

- ▶ Upgradeable 6-year limited tank warranty to 8-years*
- ▶ Upgradeable 1-year limited parts warranty
- *See residential warranty information brochure for complete warranty information.
- ▶ Upgrade your warranty with...



Best Reputation. Superior Technology.



Guardian System™

- One-of-a-kind air/fuel shut-off device offers double protection
- Maintenance free – no filter to clean
- Standard replacement parts

Self-Cleaning

- EverKleen™ patented system fights sediment build-up
- Reduces fuel costs
- Provides more hot water

Easy to Light

- No matches required

Energy Efficient

- More hot water at low operating cost

High Altitude Compliant

- All models are certified for applications up to 4,500 feet above sea level

Longer Life

- Patented magnesium anode rod design protects the tank from rust

Plus...

- Brass drain valve and temperature and pressure relief valve are included
- Meets or exceeds NRCAN requirements

Exclusive Professional Installation Warranty

When this Rheem PROFESSIONAL water heater is installed by a licensed contractor, the consumer can upgrade his limited tank and parts warranty from 6 to 8 years by returning to Rheem the warranty registration card and a copy of the contractor's invoice.

This Rheem exclusive warranty upgrade feature enhances your value as a plumbing professional. A professional installation is a better installation.

*Refer to the warranty certificate enclosed with each water heater for specific details.



DESCRIPTION	FEATURES				ROUGHING IN DIMENSIONS (SHOWN IN INCHES)										ENERGY INFO.
	GAS INPUT IN THOUS. BTU/HR.		RECOVERY IN G.P.H. 100° RISE		FIRST HOUR DEL. G.P.H. NAT.	HT. TO VENT A	TANK HT. B	DIAM. C	HT. TO GAS CONN. D	VENT SIZE E	WATER CONN. CNTR. F	HT. TO SIDE T&P G	WATER CONN. H	SHIP. WT. (LBS)	ENERGY FACTOR NAT.
PRO40-40FV1	40	36	34	30.5	72	54-1/4	50-1/2	20-1/4	14-1/2	3-4*	8	44	3/4	130	.59
PRO50-45FV1	45	40	38.2	34	88	54-3/8	50-1/2	22-1/4	14-1/2	4	8	44	3/4	160	.58

SPECIFY LP GAS WHEN ORDERING. Add "P" suffix to the model number and change BTU input. Example: PRO40-36PFV1.

* The PRO40-40FV1 features a 3-4" combo vent.

These units are designed to meet or exceed ANSI (American National Standards Institute) requirements and have been tested according to C.S.A. test procedures and meet or exceed the energy efficiency requirements of NRCAN, ASHRAE standard 90, and all government energy efficiency performance criteria for energy consuming appliances.

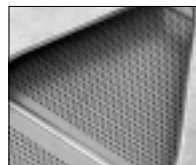
Before purchasing this appliance, read important energy cost and efficiency information available from your supplier.

Rheem Guardian System Features...



Exclusive Combustion Shut-off System

Should a spill incident occur, the Guardian System shuts off the gas supply and the air supply preventing a sustained vapour burn in the combustion chamber.



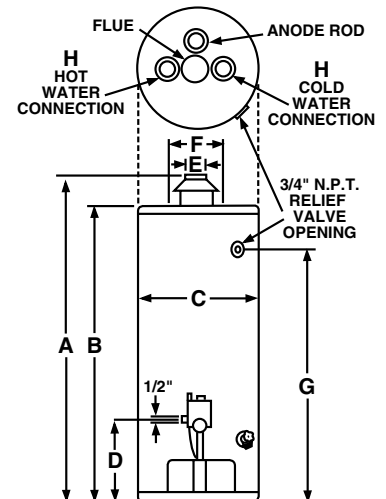
Flame Arrestor Plate

A specially-designed flame arrestor prevents ignition of vapours outside the combustion chamber.



Maintenance Free

Superior air filtration prevents the flame arrestor from becoming clogged by lint, dust and oil.



In keeping with its policy of continuous progress and product improvement, Rheem reserves the right to make changes without notice.

Rheem Manufacturing Company • Water Heater Division
Rheem Canada Ltd./Ltée, 128 Barton Street West, Hamilton, Ontario L8N 3P3