

MEGA STAGE

DYNA  STAGE®

User Manual

Model 32 30 20



The Dynastage 32 30 20 mobile stage has all the features of the larger Pro Series





Congratulations on purchasing the Dynastage model 32 30 20 Pro Series mobile stage. Mega-Stage is proud to present you with one of the finest hydraulically deployed mobile stages ever built. The many distinct features of the 32 30 20 make it a joy to use and its rugged design guarantees you many years of trouble-free operation.

This User Manual deals with the operation and maintenance of your Dynastage 32 30 20. All of the information, text, illustrations and specifications included in this manual, is based on the latest data available on this product at the time of printing. Please take time to familiarize yourself with the procedures outlined in this manual, as they are meant to protect the user as well as your investment.

This manual should be considered an integral part of this stage and must accompany the mobile stage in case of resale. It is, as always, our policy to continuously improve our products. Mega-Stage, therefore, reserves the right to make changes in design and specifications, and to make additions or improvements to its products, without any obligation to install them on previously manufactured products.

Thank you for choosing our Mega-Stage Mobile Stage.

© Mega-Stage 2007

All rights reserved. May not be reproduced or translated in whole or in part without the written consent of Mega-Stage. R.S.C. 1970, c. C-42, art. 40 (1). Any such representation or reproduction of this document, by any means, constitutes counterfeiting liable to sanctions by Canadian laws. Specifications are subject to change without notice.



<i>Table of contents</i>	<i>Page 1</i>
<i>Introduction</i>	<i>Page 2</i>
<i>Rigging Plan</i>	<i>Page 3</i>
<i>Side view</i>	<i>Page 4</i>
<i>Front view</i>	<i>Page 5</i>
<i>Stage floor</i>	<i>Page 6</i>
<i>Trailer</i>	<i>Page 7</i>
<i>Installation</i>	<i>Page 8</i>
A. Choosing the location	Page 8
B. Leveling	Page 8
C. Stage set-up	Page 9
D. Stage take-down	Page 11
E. Installing the wind-walls	Page 13
<i>Maintenance and safety</i>	<i>Page 14</i>
<i>Troubleshooting</i>	<i>Page 15</i>
<i>Warranty</i>	<i>Page 17</i>



Thank you for selecting our Mega-Stage mobile stage product.

This manual explains the operation and maintenance of the Dynastage Model 32 30 20 mobile stage. All directives in this manual are based on the latest product information available at the time of printing.

Mega-Stage reserves the right to make changes at any time, without prior notice and without any obligation.



Warns you against a strong possibility of extreme bodily damage, or even death, as a result of ignoring these instructions.



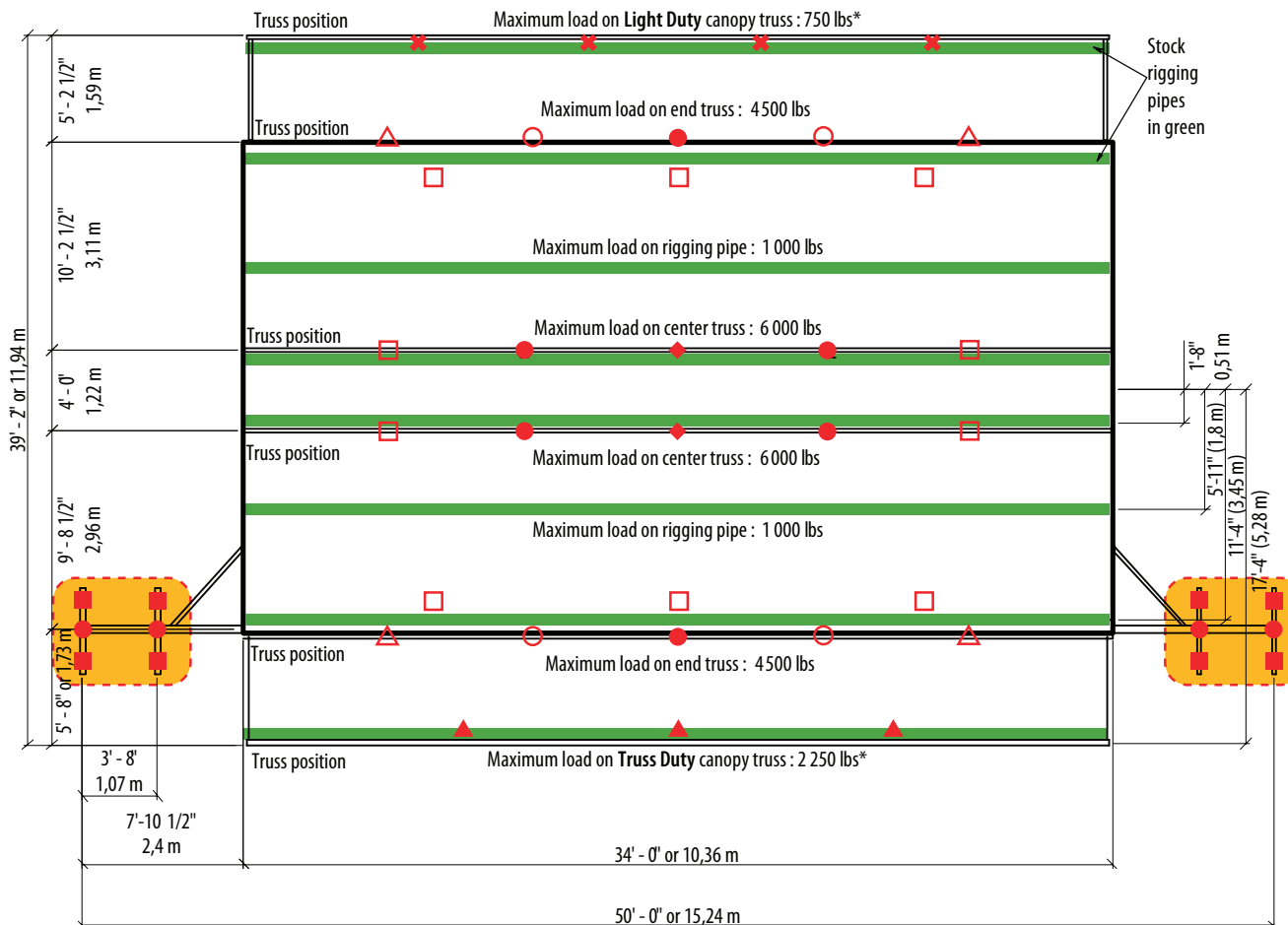
Warns you against possible breakage or damage to other equipment as a result of ignoring these instructions.



Provides useful information.

If you encounter any problem or for any question regarding your mobile stage, please contact Stéphane Berger at 1 888 359-4001 between 08:00h and 17:00h (US Eastern time and Canada GMT -5h) or consult our website at www.mega-stage.com

Your Mega-Stage mobile stage is designed to provide safe and reliable performance so long as it is used according to the instructions detailed in this manual. Before you start using this mobile stage, make sure you read and understand all of the directives, otherwise you may expose yourself to potential harm or damage the equipment.



Maximum load

Roof	30 000 lb
FOH supports	750 lb
Light Duty Canopy	750 lb
Truss Duty Canopy	2 250 lb
Standard sound wing	2 200 lb
Optional sound wing with line array brackets	4 400 lb
Maximum load bearing : Center trusses	6 000 lb
Maximum load bearing : End trusses	4 500 lb
Maximum load bearing : Rigging pipes	1 000 lb
Lifting capacity : equivalent to 35% of rigging points ratings up to a maximum of 10 000 lb	

Load distribution

✕ 250 lb	▲ 750 lb
△ 900 lb	■ 1100 lb
□ 1500 lb	○ 1750 lb
● 2000 lb	◆ 3000 lb

Notes

* Light Duty and Truss Duty canopies being options, all combinations of LD and TD canopies in front and back positions are valid.

Sound wings can be used with any end truss rigging combination.
SEE PAGE 5 FOR SOUND WINGS LOAD RATINGS

It is forbidden to attach anything to the edge truss when the corresponding FOH supports are loaded



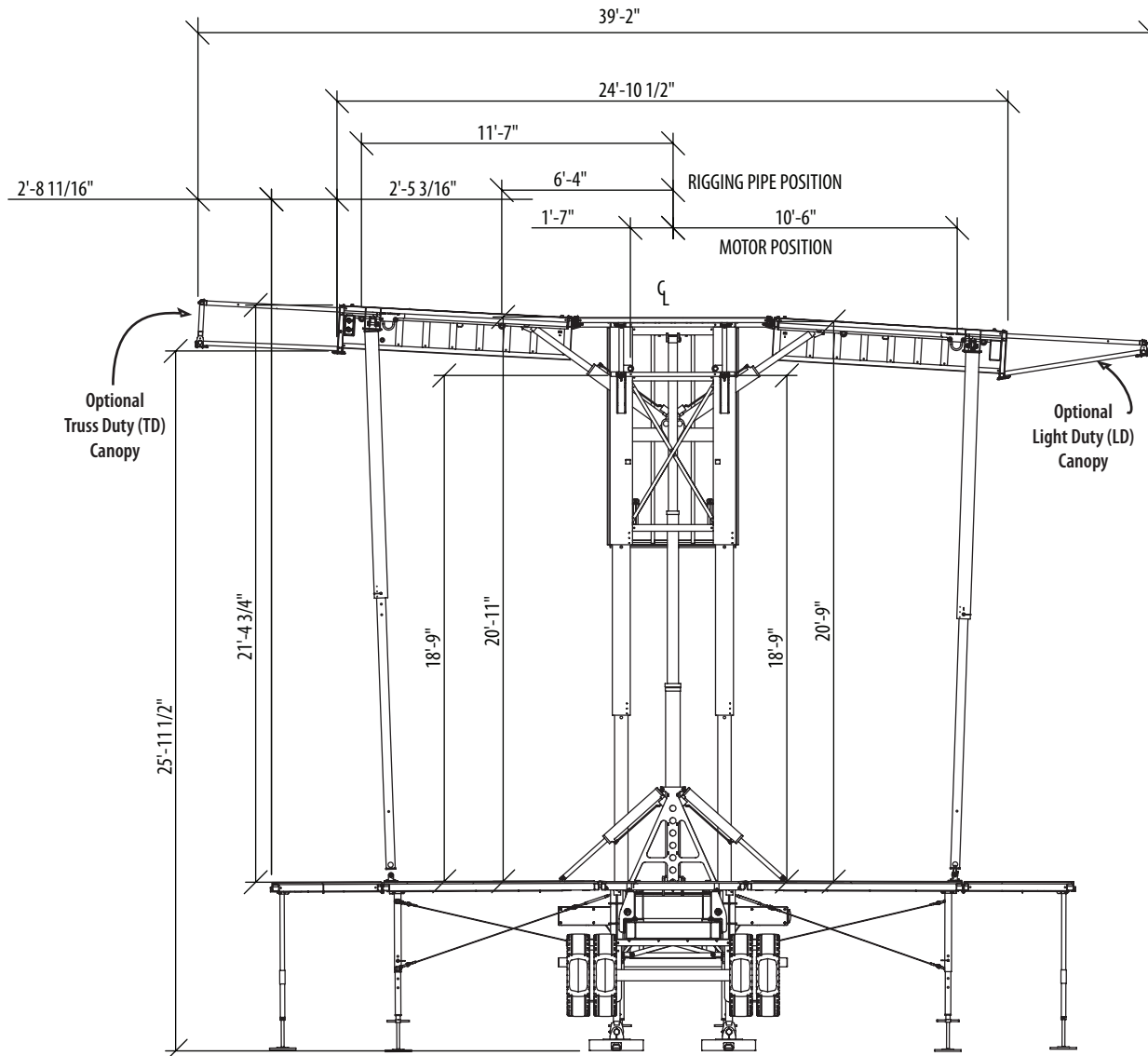


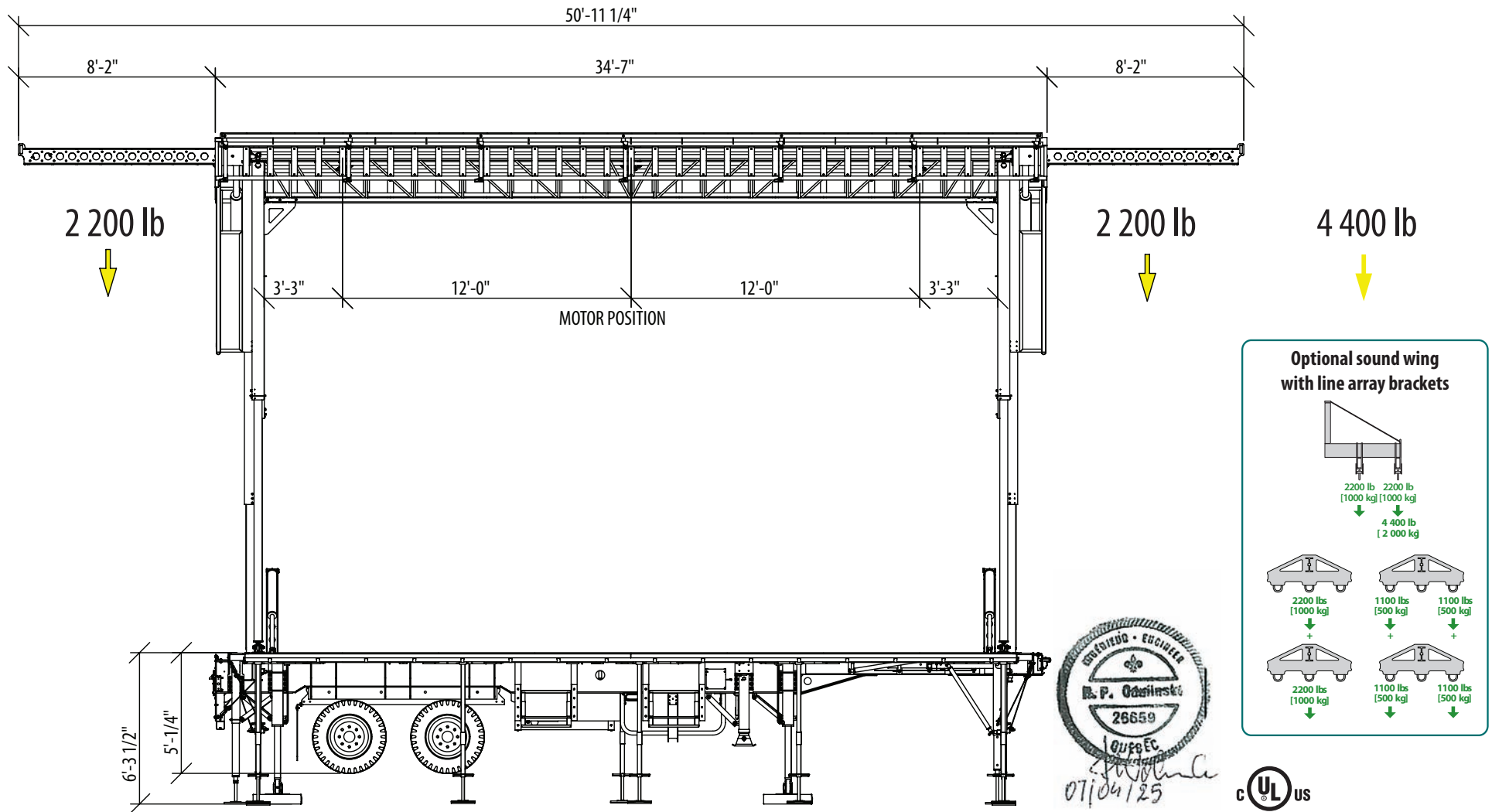
Overall dimensions

Depth	29'-9" (35'-9" with FOH) (39'-2" with optional canopies)
Width	34'-7" (50'-0" with standard sound wings) (50'-11 1/4" with optional sound wings)
Height	26'-5" to 27'-8 1/4" (31'-8 1/4" with banners)

Stage dimensions

Floor dimensions	32'-1" x 29'-9"
Ground to floor height	5'-1/4" to 6'-3 1/2" (with blocks)
Clearance under trussing	18'-9"
Clearance under roof	21'-4 3/4"



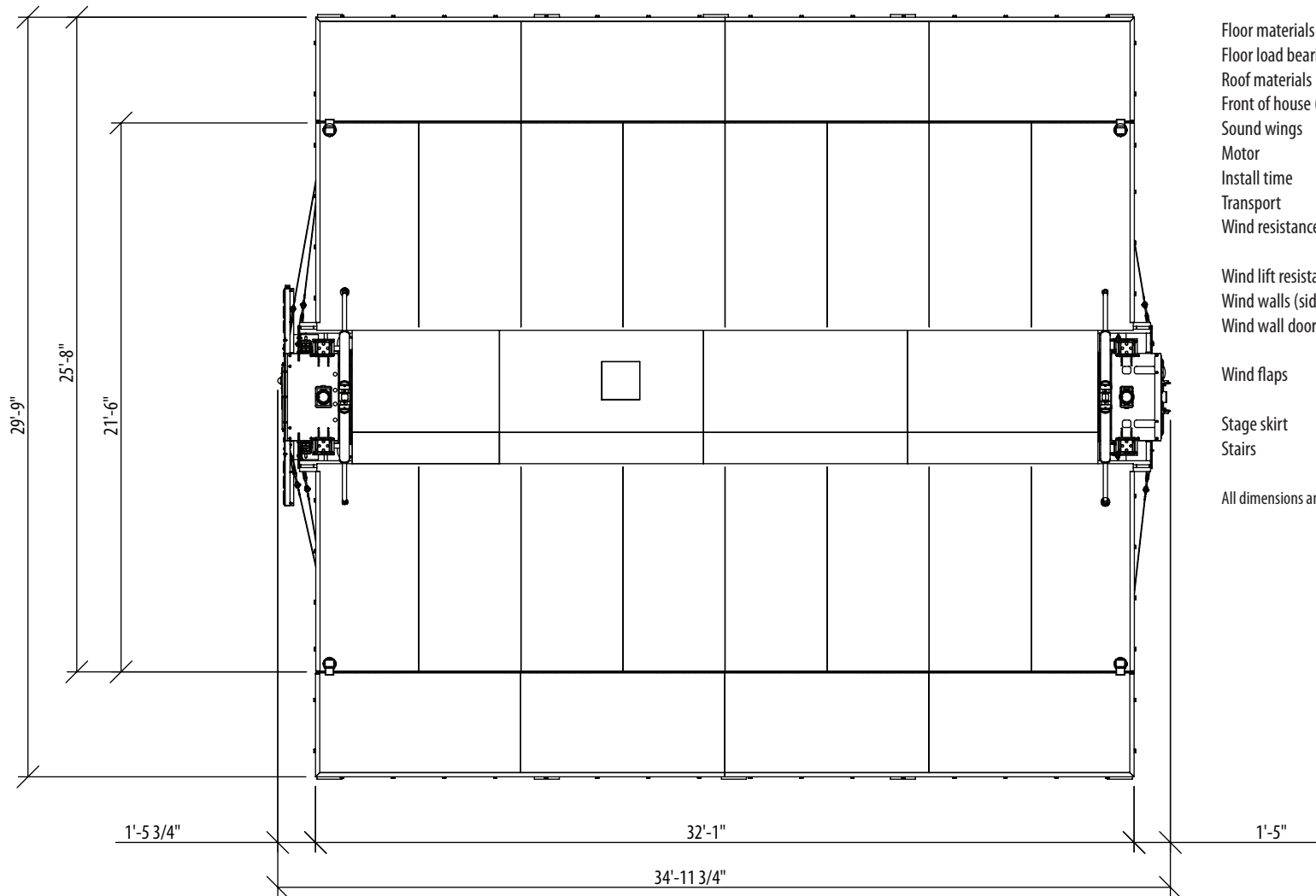




Other specifications

Floor materials	Plywood over steel
Floor load bearing capacity	150 lb per square foot
Roof materials	Fiberglass bonded to steel structure
Front of house (FOH) supports	5'-0"
Sound wings	8'-2"
Motor	20 HP fuel powered Honda GX620
Install time	2 hours with 2 technicians
Transport	5th wheel - tractor truck
Wind resistance	60 mph (100 km/h) with wind walls 70 mph (120 km/h) without
Wind lift resistance	20 lbs per square foot
Wind walls (sides and back)	16 oz. flame retardant black vinyl
Wind wall doors	1 - 6' x 8' (center back) 1 - 5' x 8' (each side)
Wind flaps	3 - 6' x 3' (backdrop) 1 - 5' x 3' (each side)
Stage skirt	Black Novathene TG
Stairs	44" wide

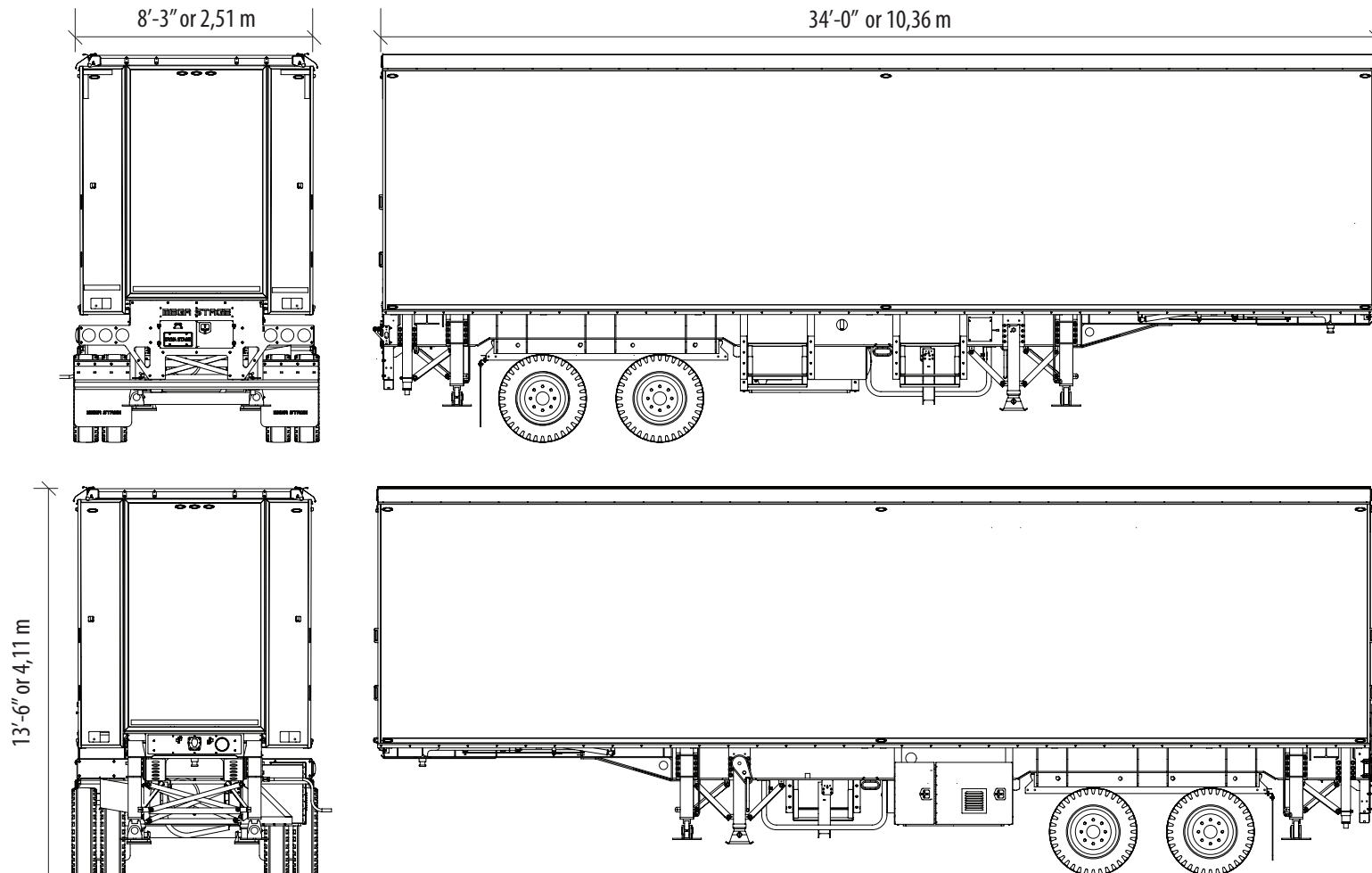
All dimensions and specifications are subject to change without prior notice





Trailer

Width	8'-3" or 2,51 m	Nominal gross vehicle weight	34 050 lbs	Hendrickson Low-ride air suspension
Length	34'-0" or 10,36 m	Nominal gross axle weight	27 250 lbs	WABCO ABS Air brake system
Height	13'-6" or 4,11 m	Maximum load on axles	50 000 lbs	
		Additional weight allowed	10 000 lbs	
		Cargo space	6'-0" x 8'-0" x 29'-3" (1 404 ft ³)	





A. Choosing the location

Obviously, the «right» location is the one that best serves the performance being presented. However, we recommend a site that is level as much as possible and a surface as stable as possible such as asphalt, concrete or pavers. Four 24"x24" (0.61x0.61m) wood blocks are supplied to spread the load to softer surfaces, such as gravel or turf. Note that permits may be necessary or that you may the assistance of professionals such as urbanists, engineers or city inspectors.



You must also consider the volume occupied by the stage once deployed and verify that it will not interfere with power lines.

B. Leveling the stage

The first order of business, and the most important step, is to make sure the stage is leveled. This step ensures the good performance of the hydraulic set-up. After you have oriented and positioned the stage on the site, use the four leveling legs and supplied levels to make sure the stage is perfectly horizontal. Improper leveling could result in damaging the stage.

Leveling a stage that is not equipped with hydraulic legs

1. Place the wood blocks under the leveling jacks.
2. Using the "Fast" setting, lower all four (4) jacks to make contact with the ground
3. Set the jacks to the stronger setting with the crank
4. Check the levels and adjust until perfect results are achieved.



DO NOT ATTEMPT TO OPERATE WITHOUT FIRST LEVELING THE STAGE !

C. Emptying the cargo area

Install the floor legs prior to unloading. Failure to properly support the floor may result in damage to the hinges. Hydraulic force applied to damaged hinges can result in a cam effect that would destroy important stage mechanisms.



DO NOT ATTEMPT TO UNLOAD CARGO WITHOUT THE FLOOR LEGS INSTALLED!



C. Setting up the stage

Before you start deploying the stage, make sure to read and correctly understand all of the following instructions. A mobile stage is considered heavy machinery and deployment has to be executed by QUALIFIED PERSONNEL, whose judgement is not impaired by drugs or alcohol fully aware of the dangers associated with the operation of such machinery.

1. Place the two (2) trailer stabilizing jacks on the ground
2. Release the fifth wheel and connections from the truck and put it away
3. Undo the ratchet fasteners retaining the wings
4. Open all storage
5. Power up the work lights with the supplied 110V extension cord or 12 V cable, if needed
6. Start the engine (See operation manual)
7. Before using the control levers, make sure no one is standing near moving parts such as the roof wings or floor panels.
8. Lower the hydraulic leveling jacks and make sure the stage is level
9. Open the wings by approximately 2 ft on each side.
10. Deploy front and back mechanical safety legs.
11. Raise the columns about 24 - 36"
12. Attach spansets to each wings.
13. Open up the wings.
14. Attach the other end of the spansets to the floor.
15. Begin opening the first floor section.
16. Use the floor and wing hydraulic controls to level the floor.
17. Once the floor is level, first secure the corner legs, then all other legs.
18. Repeat this operation on the other side for the second floor section
19. Attach the steel wire braces to the corner legs and secure the other to the appropriate anchor point on the chassis.



C. Setting up the stage

With truss duty canopy option installed:

20. Raise the columns far enough to be able to close the wings almost completely.
21. Close the wings until there is a 6" (150 mm) gap between the bottom of the wing and the center column.
22. Lower the columns until the wings rest on the deployment brackets.
23. Pull out the truss duty canopy
24. Raise the columns until the secondary wings are fully extended. Put the canopy braces on.
25. Remove the pin retaining the corner posts to the roof, extend the posts until they reach the proper (+5, 0, -5) degree adjustment and insert the pin through.
26. Lower the roof with the columns
27. Install all accessories : Front-of-house (FOH) supports, light duty canopy, wind walls, side wings, top and side banner supports when applicable.
28. Raise the wings to their final position
29. As you raise the center columns to their final position, watch that rear and front columns raise simultaneously. Insert safety rods into the columns under each section. Tie up the dutch lacing joints as per section E
30. Secure all four (4) corner posts in place, using the attached pins.
31. Install the stage skirt.
32. Install the stairs and hinge covers, ramps and balustrades if needed.
33. Close the work lights, put away the tools and lock the storage.
34. Ask a certified electrician to connect the stage to a grounding rod

The stage is now ready for the show.



D. Taking down the stage

1. Open all storage
2. Power up the work lights with the supplied 110V extension cord or 12 V cable, if needed
3. Remove the stairs and hinge covers, ramps and balustrades
4. Remove the skirt
5. Untie the bottom of the wind-walls
6. Start the engine (See operation manual)
7. Before using the controls, make sure no one is standing near moving parts such as the roof wings or floor panels.
8. Remove the safety rods from all the first column sections : Front corner columns, center jacking columns and back security legs
9. Remove the pins from the corner posts.
10. Lower the columns
11. Take off all accessories : Front-of-house (FOH) supports, Light Duty canopy, wind walls, side wings, top and side banner supports when applicable.
12. Remove the steel wires

With truss duty canopy option installed:

13. Close the columns until the wings rest on the deployment brackets and remove the canopy braces.
14. Raise the columns until there is enough clearance to close the wings
15. Lower the columns until the secondary wings are fully retracted inside the primary wings.



D. Taking down the stage

16. Secure the secondary wings with the safety pins
17. Slightly raise the columns
18. Open the wings
19. Detach the steel wires bracing the floor, from the chassis and corner legs.
20. Put the corner posts back into their locked position inside the roof
21. Attach spansets to the roof and floor and lift approximately 3 inches.
22. Fold back all legs and close the floors
23. Follow the safety directives outlined in the set-up procedure.
24. Lower the columns and close the wings completely
25. Raise the hydraulic leveling legs
26. Store the blocks and plywood
27. Close the lights, store all tools and lock the storage.
28. Go through the usual road inspection
29. Remove ground wire and rod

The stage is ready for the road



E. Installing the wind-walls

Backdrop and wind-walls (optional)

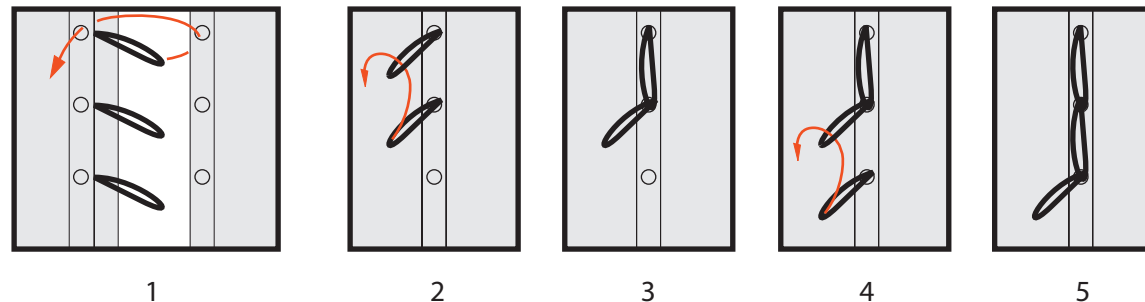
Material: 16 oz. black Vinagard® by Vintex
 Characteristics: polyvinyl chloride double coated with polyester fibre reinforcement
 flame retardant (NFPA 701 & ULC S-109) and UV resistant



We strongly advise against using the stage during violent windstorms and urge you to lower the roof instead. We consider that winds in excess of 50 mph (80 km/h) pose a serious threat, as they can tear the fabric which, in turn, can cause serious to fatal injuries.

1. Unroll the backdrop and, using the hooks, attach it to the end truss. (Make sure the wind trap covers face outward)
2. Do the same with the side walls.
3. When backdrop and side walls are not permanently attached together, do the dutch lacing as demonstrated in diagrams 1 to 5 below.
4. Tighten the tie-downs and bind the wind-walls to the steel rods under the floor

'Dutch Lacing' setup diagram





Maintenance - Safety

It is crucial to read maintenance and safety rules. As previously stated, mobile stages are considered heavy machinery and should be operated with utmost care. Under any and all circumstances, Mega-Stage and its employees can not be held responsible for any injuries or damages resulting from the misuse of their products.



Before setting up the stage, make sure the site is safe. Inspect the ground, check for obstacles such as trees, electric posts and especially power lines (Refer to section A of installation procedures).



The stage must be operated by QUALIFIED PERSONNEL (trained and certified by Mega-Stage) aware of the inherent dangers of the stage operation.



Keep everybody else away from the stage while operating controls, specially while opening the floors. We suggest placing orange safety cones to designate the 4 corners of the site reserved to stage deployment.



Periodically check the following elements of the stage, as shown in table 1 on page 15:



Inspection schedule

Item	Inspection	Frequency	Fix if needed
1.	Check all pins	Every use	Replace pins
2.	Check the coiled electrical cord	Every use	Repair or replace if worn
3.	Check all supports	Every use	Repair or replace
4.	Check the air springs	Monthly	Replace the air springs
5.	Check the axle fluid	Monthly	Add fluid
6.	Check the air pressure of the tires	Monthly	Inflate (or deflate) the tires
7.	Check the tires for wear	Monthly	Change tires
8.	Inspect the floor legs for breakage	Monthly	Replace the leg
9.	Check the wheel nuts	Monthly	Tighten as necessary
10.	Check the brake pads	Twice a year	Replace if worn
11.	Inspect hydraulic jacks	Twice a year	Replace any leaking ring
12.	Check the cylinders grease	Monthly	Grease the joints if necessary
13.	Check all bolts	Yearly	Tighten
14.	Check the oil filter	Yearly	Replace
15.	Check hose take-up reels	Yearly	See the supplied maintenance guide
16.	Engine maintenance	Variable	See the supplied maintenance guide

Table 1



Troubleshooting

Refer to this table if you experience problems operating the stage

Problem	Cause
The engine will not start	See the troubleshooting section of the owner's manual
The engine will not start	Make sure the QuickConnect hose is properly coupled
Hydraulic legs will not operate	Is the selector pushed into position?
Command levers do not respond	Is the selector pulled?
Work lights do not work	Is the extension cord plugged in?

Table 2



Warranty

Limited warranty (Applicable in Canada only to stage purchases)

The Seller warrants that if, under normal conditions, the stage is transported, installed, assembled, operated, used, disassembled and maintained by the buyer according to all technical specifications and requirements of the seller as instructed verbally or written in the manuals, and that all aforementioned operations are exclusively carried by trained individuals certified as "QUALIFIED PERSONNEL" then, the stage is guaranteed free of all manufacturing defects for one period of one (1) year starting from the delivery date. In the eventuality of failure before the end of the one (1) year warranty period, the seller will repair or replace the stage according to his own judgement and determination. The seller will be responsible for the cost of all parts and labour costs associated solely with the repair of the stage. There is no warranty from the seller covering aird-walls, skirts and tires. This warranty is valid across the globe and provided to the original buyer only. The following eventualities do not constitute defect and are not covered by this warranty:

- Repairs needed because of abuse, improper use or negligence.
- Repairs needed because of normal wear or resulting from faulty maintenance.
- Repairs needed because of damage resulting from unauthorized servicing or modifications that could affect the performance and reliability of the stage.
- Repairs needed as a result of exceeding load capacities, road accidents, fire, windstorms or other circumstances beyond control.

THE GUARANTEES INCLUDED IN THIS AGREEMENT ARE THE ONLY VALID GUARANTEES WITH REGARD TO THE STAGE, AND REMEDIES INCLUDED ARE THE ONLY REMEDIES OF THE PURCHASER IN THE EVENTUALITY THAT THE SELLER CONTRAVENES TO SUCH GUARANTEE.

THE SELLER HEREBY DENIES ALL OTHER GUARANTEES EXPRESSED OR IMPLIED THAT ARE NOT EXPLICITLY WRITTEN IN THIS AGREEMENT, INCLUDING WITHOUT RESTRICTION ANY IMPLIED GUARANTEE OF SUITABILITY FOR A SPECIFIC PURPOSE. THE SELLER WILL NOT BE HELD RESPONSIBLE FOR ANY INCIDENT OR DAMAGE OF ANY KIND RESULTING DIRECTLY OR INDIRECTLY FROM VIOLATION OF SUCH GUARANTEES, BEFORE OR AFTER DELIVERY OF THE STAGE



Warranty

Application of the warranty

The buyer must immediately send by fax and overnight delivery a detailed written report of any mechanical failure or other stage defect, including photographs, drawings and descriptions, whether or not this failure or defect is deemed to be covered by the seller's limited warranty. If the problem is deemed to be covered by the seller's limited warranty, the seller will try to assist the buyer's technician by phone or fax to resolve the problem. If the seller and buyer cannot resolve the issue in this manner, the seller can decide within reasonable delays to either send his own technician to execute warranty repair on the site or provide the buyer with written consent to have the stage fixed locally by a third party, in which case will reimburse reasonable costs for parts and labour. If the buyer does not comply with one or another of the warranty procedures of this agreement, including sending a detailed report with photographs or drawings, or doesn't provide full co-operation with the seller's technical support staff, then all guarantees expressed in this agreement with regard to the stage will instantly become null and void.

Modifications and enhancements

In the eventuality that the seller decides to make modifications or enhancements to the stage, the seller can freely decide to his sole discretion to provide the buyer with technical bulletins when necessary. The buyer hereby accepts to follow directives contained in all and any bulletins. Costs incurred as a result of these instructions will be the exclusive responsibility of the seller when the bulletins deal with safety matters and the exclusive responsibility of the buyer when the bulletins deal with installation, operation or maintenance of the stage. If the buyer, for any reason, does not comply with the bulletins then all guarantees expressed in this agreement with regard to the stage will instantly become null and void.

Training

As a pre-requisite to the limited warranty explained in this agreement, before using this stage and continually for the duration of the warranty period, the buyer will make sure that at least two (2) of his technicians are trained and certified by Mega-Stage as "QUALIFIED PERSONNEL" and that the stage will be operated exclusively by or under direct supervision from this "QUALIFIED PERSONNEL".



Warranty

Maintenance

The buyer accepts, hereby represents and guarantees that the stage will undergo regular inspection and maintenance by "QUALIFIED PERSONNEL" or under direct supervision from this "QUALIFIED PERSONNEL" according to the requirements and specifications explained in the manuals. Upon request, the buyer will complete in full and promptly return to the seller any maintenance form supplied by the seller and official inspection reports. The buyer accepts that the seller orders a complete inspection of the stage on a yearly basis.

After-sale service

Any warranty servicing of this stage can be obtained from:

Mega-Stage
927 Gaudette street, Industrial Park
Saint-Jean-sur-Richelieu (Québec) J3B 7S7
Canada
Phone: (450) 359-4000
Fax: (450) 359-4242
www.mega-stage.com