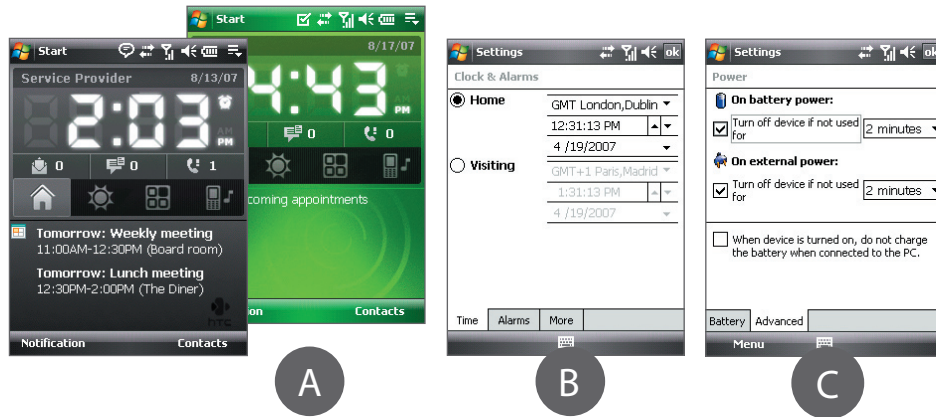



Personalize Your Device

- Change the Today screen background**
Tap **Start** > **Settings** > **Personal** tab > **Today**.
- Set the date and time**
Tap **Start** > **Settings** > **System** tab > **Clock & Alarms** > **Time** tab.
- Manage power settings**
Tap **Start** > **Settings** > **System** tab > **Power** > **Advanced** tab.



Make a Voice or Video Call

- Press the TALK button or while on the Today screen, open the 16-key hardware keypad.
- Touch the keys on the Phone screen or use the keypad to enter the first few digits of a phone number or the beginning letters of a contact name.
- The Smart Dialing panel will display the matching phone numbers in Call History as well as the matching contacts found on your device and SIM card. Select the number or contact you want to call then press TALK. To make a video call, touch  instead of pressing TALK.

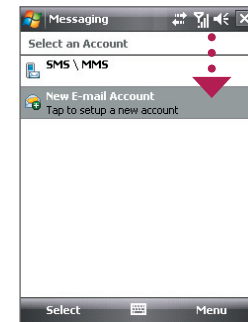


For hands-free phone conversation, connect the USB stereo headset or a Bluetooth® headset (not included) to your device.

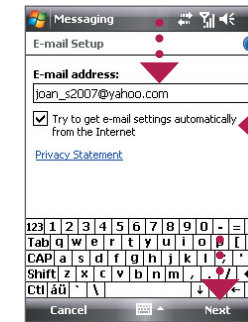
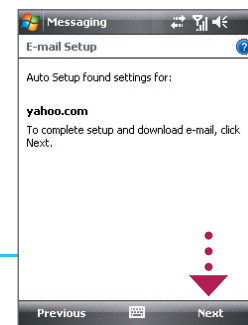
To learn how to connect a Bluetooth headset, refer to the User Manual.

Get E-mail On Your Device

Get e-mail messages on your device. Set up your device so you can send and receive e-mail messages using your favorite e-mail service.



- Tap **Start** > **Messaging** > **New E-mail Account**.



- Enter your E-mail address and tap **Next**.

- Auto Setup downloads e-mail server settings automatically to your device. Tap **Next**.

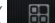

Note If Auto Setup is unsuccessful, you need to manually enter the settings in the succeeding screens.

htc TOUCH DUAL Read Me First

This **Read Me First** will help you get started with using your Windows Mobile® 6 powered device. We recommend that you have this guide handy when you start using your device.

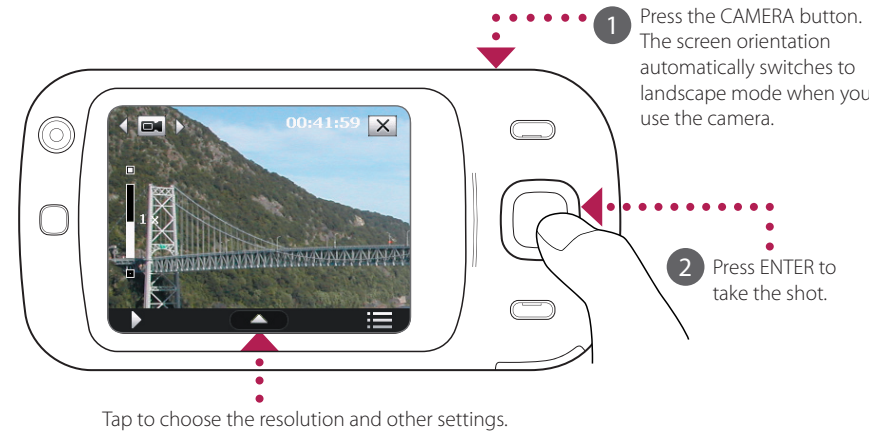
For a more complete reference, consult the User Manual that came with the device.



Secure Your Device

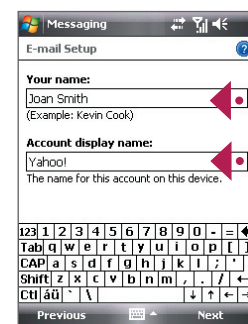
- To enable the SIM PIN**
Enabling the SIM PIN requires you to enter a PIN code first before you can use the phone features of your device.
You can enable the SIM PIN by tapping **Start** > **Settings** > **Personal** tab > **Phone** and selecting **Require PIN when phone is used**.
- To enable the device password**
Enabling the device password requires you to enter a password to unlock the device after it has been left idle for a set period of time.
 - Tap **Start** > **Settings** > **Personal** tab > **Lock**.
 - Select the **Prompt if device unused for** check box and enter the time you want.
 - Select the **Password** type.
 - Enter and confirm the password, then tap **OK**.
- To enable the key lock**
Enabling the key lock helps prevent accidental key presses when the device is in your pocket or bag.
Lock the keys by tapping the **Launcher** tab () on HTC Home and then tapping  .
To unlock, tap **Unlock**.

Take a Photo

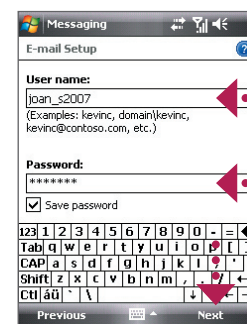
Use the Camera of your device to capture those precious moments.



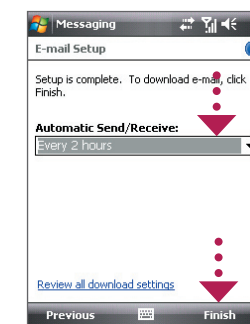
The photo will be saved to the My Pictures folder, unless you choose to delete it by tapping  after taking the photo. Tap  if you want to send the photo via MMS or e-mail. Refer to the User Manual for more information about using the Camera.



- Enter Your Name and Account display name. Tap **Next**.



- Enter your User name and Password for the e-mail account. Tap **Next**.



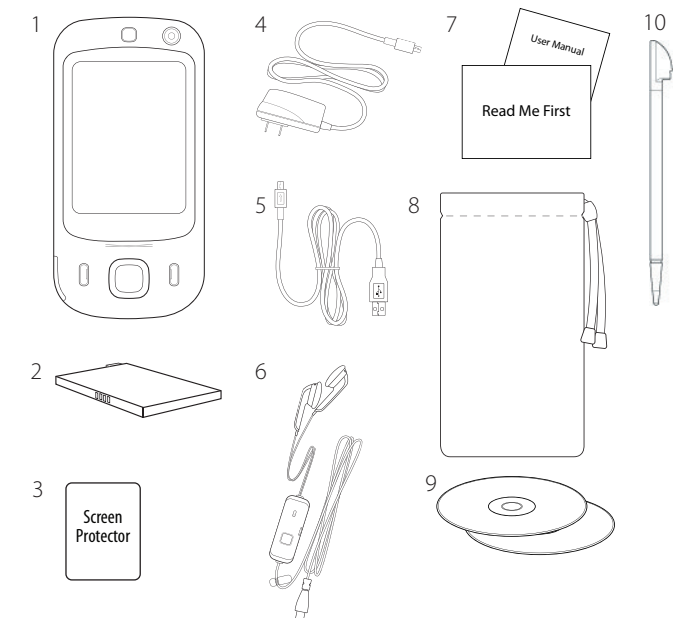
- Choose how frequent you want your device to automatically send and receive e-mail. Tap **Finish**.

You can also synchronize your device with your company's Exchange Server so you can access your company e-mails.

Refer to the User Manual to learn how to get your company e-mails on your device.

What's in the Box

These are the items that you should find inside the box.



- Touch Phone
- Battery
- Screen Protector
- AC Adapter
- USB Sync Cable
- USB Stereo Headset
- Read Me First and User Manual
- Pouch
- Getting Started and Applications Discs
- Extra Stylus

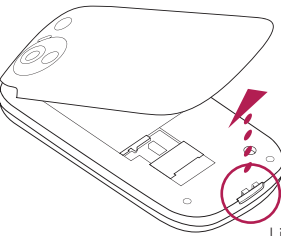
www.htc.com



90H00xxx-xxM Rev.A

Before Using Your Device

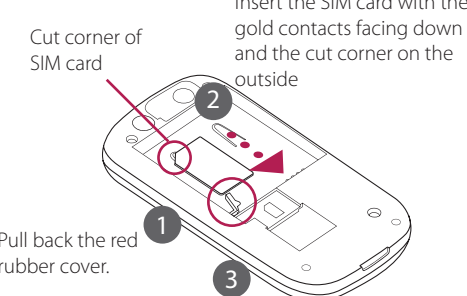
A. Remove the back cover



Hold the device in place with one hand and with your other hand's thumb or finger, lift up the bottom of the back cover.

Lift from here.

B. Install the SIM Card



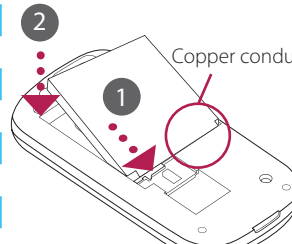
Cut corner of SIM card

Insert the SIM card with the gold contacts facing down and the cut corner on the outside

1 Pull back the red rubber cover.

2 Close the red rubber door.

C. Install the battery



2

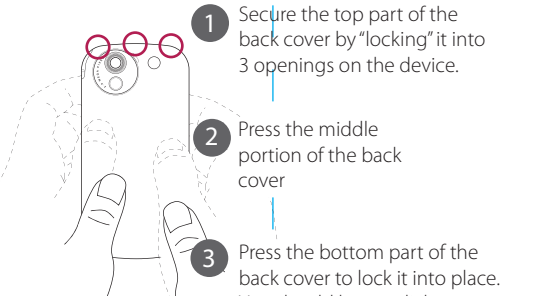
1

Copper conductor

Install the battery by inserting it with its exposed copper part aligned with the protruding copper conductor on the lower-right side of the battery compartment.

Insert the bottom side of the battery first, then gently push the battery into place.

D. Replace the back cover



1

2

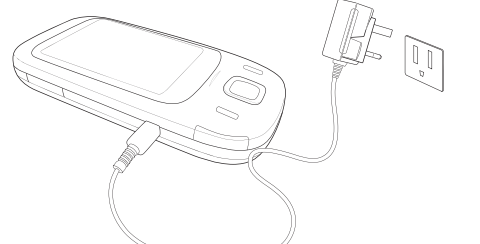
3

Secure the top part of the back cover by "locking" it into 3 openings on the device.

Press the middle portion of the back cover

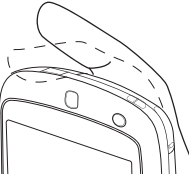
Press the bottom part of the back cover to lock it into place. You should hear a click.

E. Charge the battery



The battery is not fully charged out of the box. To charge the battery inside your device, connect the AC adapter plug to an electrical outlet and connect the USB end to the Sync connector on the left side of your device. The battery is fully charged after about 3 hours of charging.

F. Power on/off the device

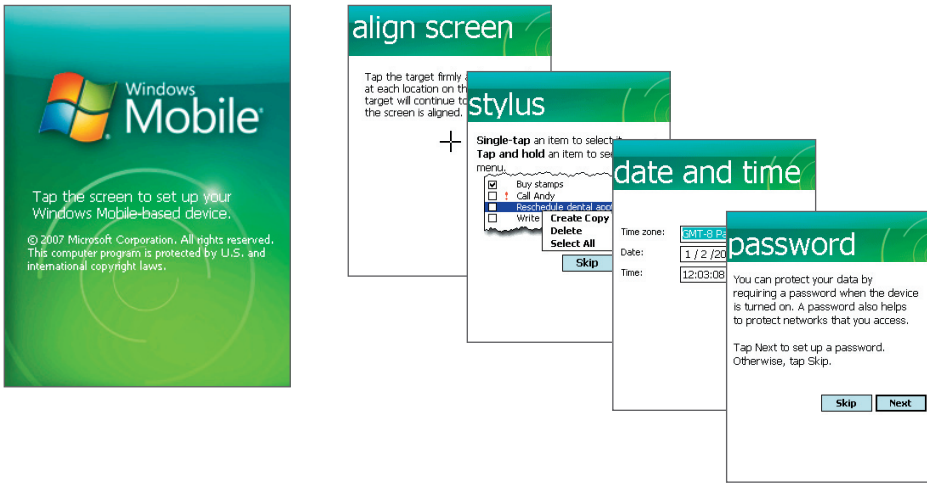


Press and hold the POWER button for about 3 seconds to power on your device.

When powering off, a confirmation message will be displayed. Tap **Yes** to power off the device.

Quick Setup Wizard

When you power on your device for the first time, a Quick Start Wizard will guide you through touch screen calibration, provide a quick tutorial on stylus operation and pop-up menus, and allow you to set the date, time, and a device password. Follow the on-screen instructions to complete the wizard.



Synchronize Your Device and Computer

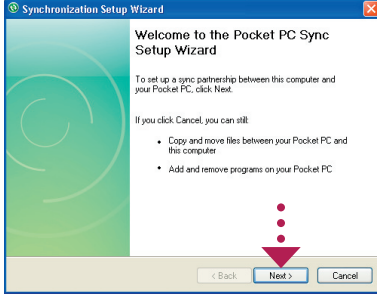
Synchronize your device with your computer to keep information such as Outlook e-mails, contacts, tasks, and appointments up-to-date on your device.

Set up synchronization software on your computer

Depending on the Operating System of your Computer, you will need either Microsoft ActiveSync® 4.5 (or later) or Windows Mobile® Device Center to synchronize your device with your computer.

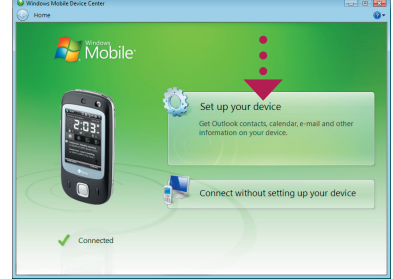
Set up ActiveSync on Windows XP

- 1 Install ActiveSync 4.5 on your computer from the Getting Started Disc.



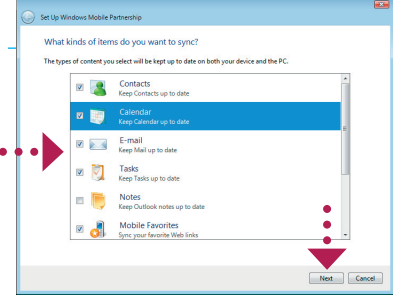
Set up Windows Mobile Device Center on Windows Vista®

- 1 Connect your device to your computer. In Windows Mobile Device Center, click **Set up your device**.

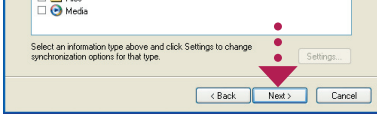


Connect your device to your computer.

- 2 The Synchronization Setup Wizard automatically starts and guides you to create a synchronization partnership. Click **Next** to proceed.

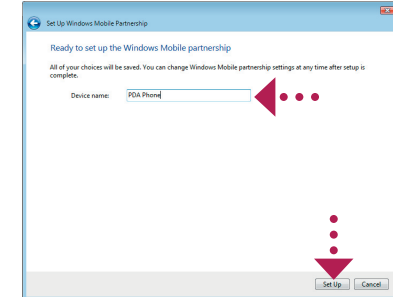


To synchronize your device with your computer, clear the Synchronize directly with a server running Microsoft Exchange check box and click Next.



Select the information types that you want to synchronize, then click Next.

- 4 Select the information types that you want to synchronize, then click **Next**.



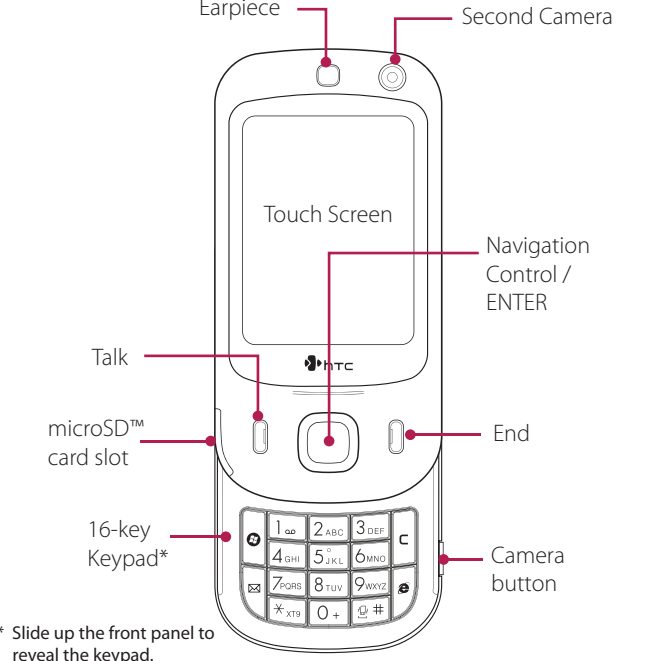
Choose whether to allow wireless connections while your device is connected to the computer.

- 5 Choose whether to allow wireless connections while your device is connected to the computer.

Click Finish.

- 6 Click **Finish**.

The Touch Phone



HTC Home

HTC Home™ is a Today screen plug-in that gives you up-to-date local information at a glance, such as time, date and weather information, and shows new messages and missed calls. It also has a customizable launcher where you can add your favorite applications for one-touch access and a Profile selector where you can quickly change the profile or ring tone of your device.



TouchFLO™

TouchFLO™ gives you better touch panel experience on your device. Using TouchFLO, you can easily scroll and pan the screen by sliding your finger on the touch panel. TouchFLO also has the Touch Cube where you can add your favorite contacts, access media, launch programs, and more.

Finger scrolling
While on a Web page, document, or list (such as contacts list, file list, etc.), slide your finger upward to scroll down; slide your finger downward to scroll up.

To scroll to the right, slide your finger to the left. To scroll to the left, slide your finger to the right.

Finger panning
Touch and hold on the touch screen and then drag your finger around the screen.

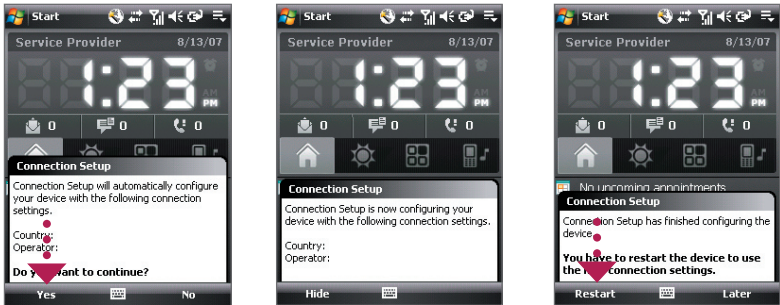
Touch Cube
To open the Touch Cube, slide your finger upward, starting from the bottom of the touch screen where it shows a logo image. To close the Touch Cube, slide your finger downward.

Touch Cube is a three-dimensional, cubic user interface. To flip the interface from one side to another, slide your finger left or right on the touch screen.



Configure Data Connections

When you start up your device with a SIM card installed, you see a notification message from the **Connection Setup** on the Today screen. Connection Setup can help you automatically set data connection settings such as GPRS/3G, MMS, and WAP. Setting up your GPRS/3G connection lets you surf the Web while on the go.



- 1 When you see the notification message from the Connection Setup, tap **Yes**.
Note If your SIM card supports multiple network operator profiles, a message will appear with network profile choices. Select the profile you want to use and tap **OK**.
- 2 Connection Setup then starts to configure your device's data connection settings.
- 3 After the Connection Setup completes the configuration, tap **Restart**.

Use Internet Explorer® Mobile (tap **Start** > **Internet Explorer**) to surf the Web.