



---

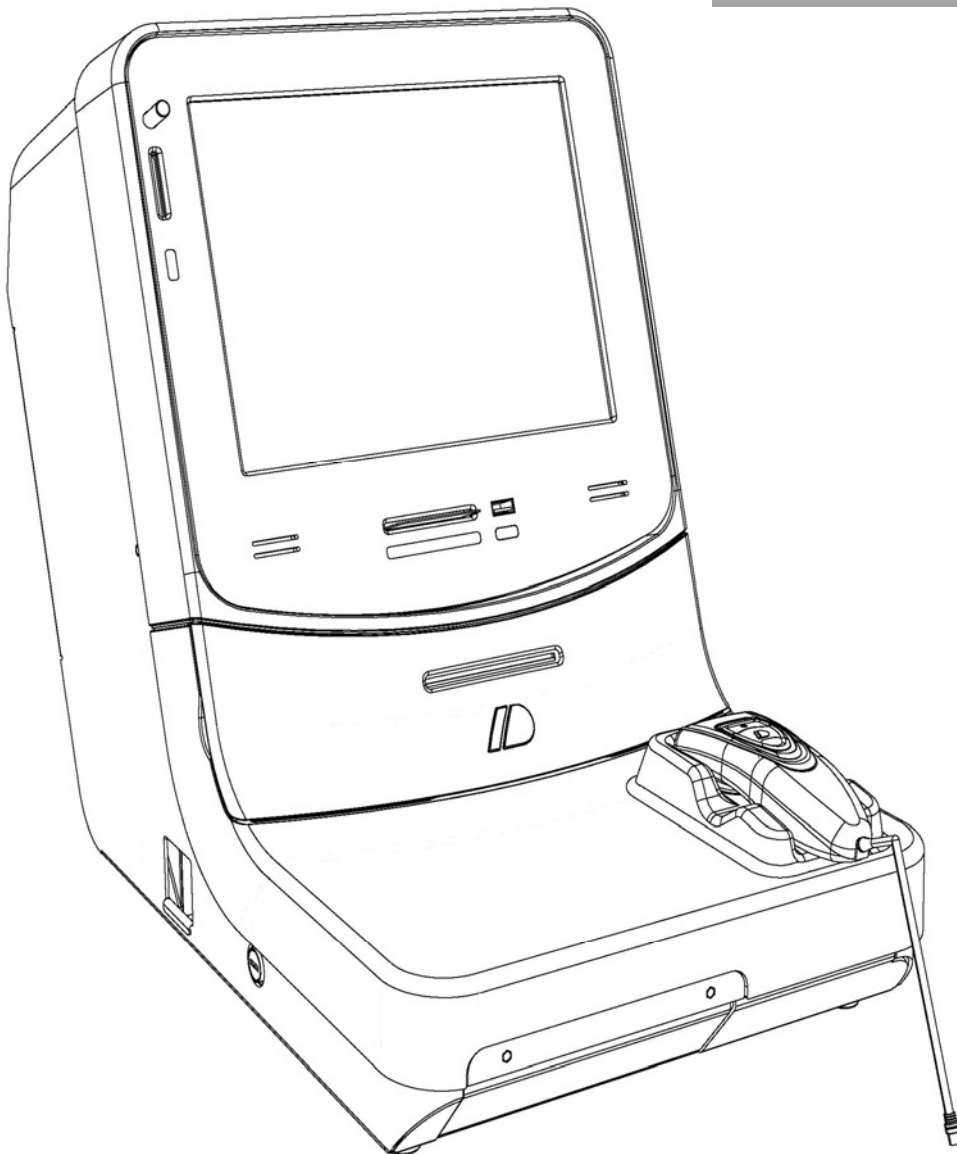
## USER'S MANUAL

MA11-02/A  
14/12/2010

---

**DAVI & CIA**  
[www.davicia.com](http://www.davicia.com)

---



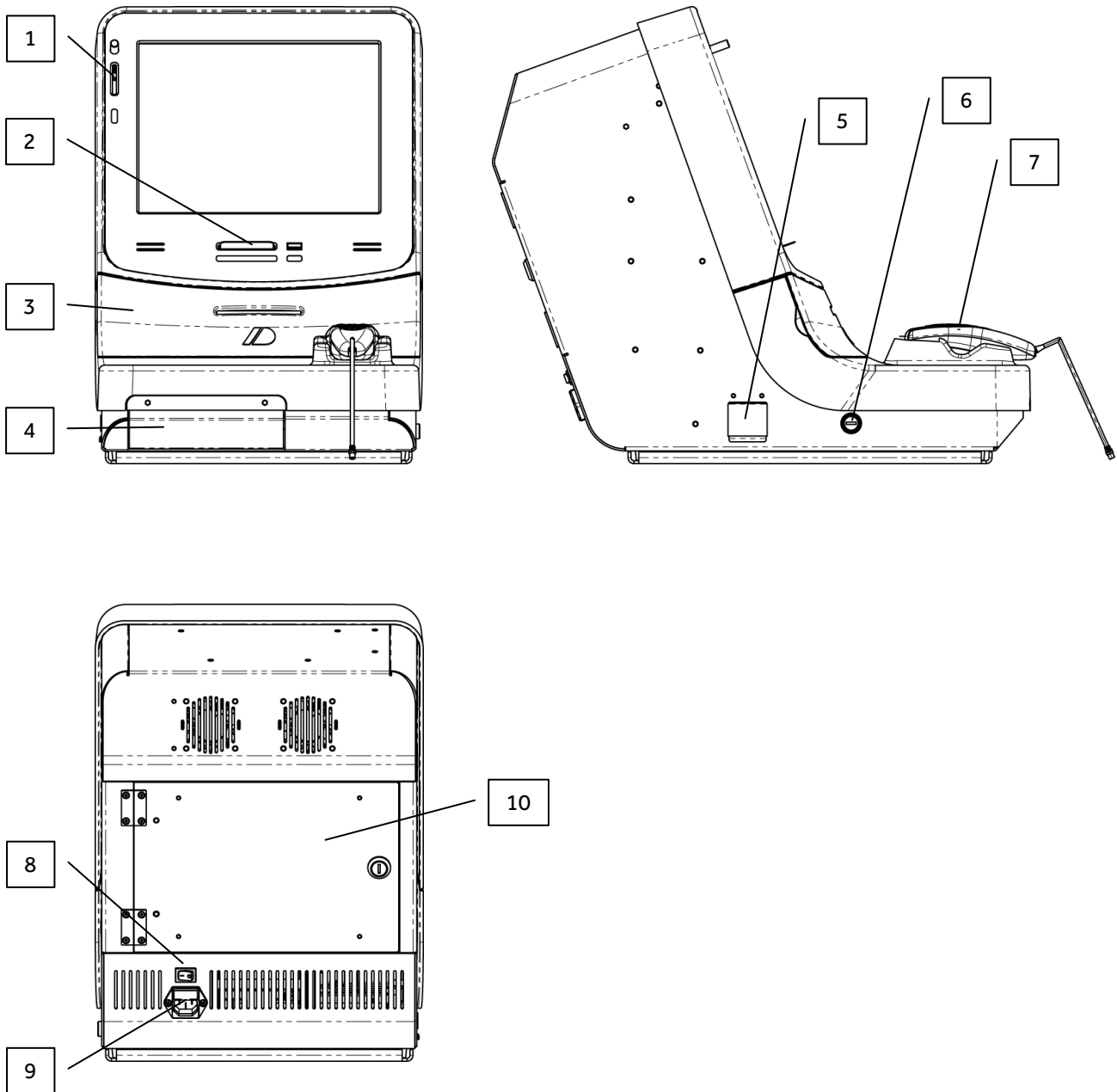
## INDEX

---

	Page
1. DESCRIPTION	3
2. PART LIST	4
3. STARTING UP	5
4. LOCATION AND ENVIRONMENT	5
5. OPERATION	5
6. POLARIZATION OF THE CAMERA	6
7. MAINTENANCE AND CLEANING	6
7.1 Screen cleaning	7
7.2 Paper roll change	7
7.3 Equipment disposal	7
8. TECHNICAL SPECIFICATIONS	8
8.1. Camera	8
9. GUARANTEE	9
10. CE DECLARATION OF CONFORMITY	10

## 1. DESCRIPTION

---



- (1) Coin slot
- (2) Chip card slot
- (3) Access cover for changing paper
- (4) Coin box
- (5) Coin return
- (6) Button for opening the coin box
- (7) Skin sensor camera
- (8) ON / OFF Button
- (9) Power supply / Fuse
- (10) Maintenance access lid

## 2. PART LIST

---



dpone EQUIPMENT

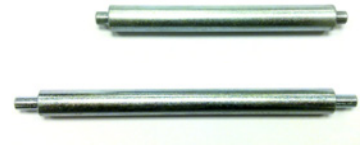
---



Set of keys to access the maintenance lid and the coin box (x2)



Plastic key ring (x1)



Paper roll shafts (x2 sizes)



Paper roll (x8)



Power supply cable (x1)



Chip card (x50)



Cleansing towelettes(x200)



Acrylic towelette dispenser (x1)



Screws to mount the equipment on its desk (x4)

---

Includes software manual.

### **3. STARTING UP**

---

- Connect the equipment to the power supply (9)
- Press the button located in the back side to the left (8)
- The screen will turn on and the software will launch in a few minutes.

To switch off the equipment, press the button once again and the dermoprime software and the Operating System will automatically close.

The software application runs under Microsoft Windows Operating System, automatically starting up Windows without having to touch the Operating System.

### **4. LOCATION AND ENVIRONMENT**

---

The appliance should be kept well away from vibrations and sources of intense heat such as heaters.

Stand the appliance on a flat, level surface where it is firmly supported.

### **5. OPERATION**

---

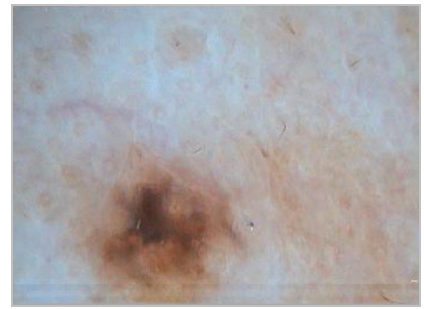
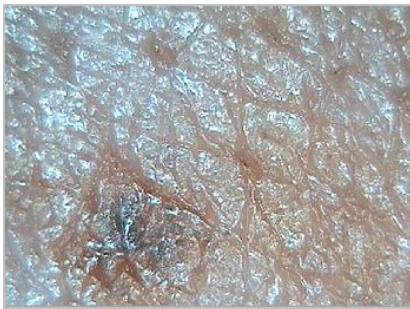
- Please refer to the software manual.

## 6. POLARIZATION OF THE CAMERA

---

The dermoprime system uses a single device of integrated lenses that can explore 3 different skin layers thanks to the X60 Triple mode lens with automatic polarization.

These three images of the same area have been captured with the three modes of the X60 lens:



### NORMAL 1

Analyzes:

- PORES
- UNIFORMITY
- ELASTICITY

### NORMAL 2

Analyzes:

- WRINKLES

### POLARIZED

Analyzes:

- SPOTS

## 7. MAINTENANCE AND CLEANING

---

The only maintenance operation that can be performed by non-qualified personnel is changing the paper and cleaning the screen.

Never attempt to carry out any repairs yourself. In the event of a fault, contact the Technical Assistance Service.

If the power cord is damaged, it must be replaced by the Technical Assistance Service or qualified personnel in order to prevent any malfunction and make sure that the appliance is not dangerous.

Use only a soft, slightly damp cloth to clean the appliance. Never use petrol, thinner or any other similar solvent product.

To prevent any damage, never clean the camera lens.

### 7.1. SCREEN CLEANING

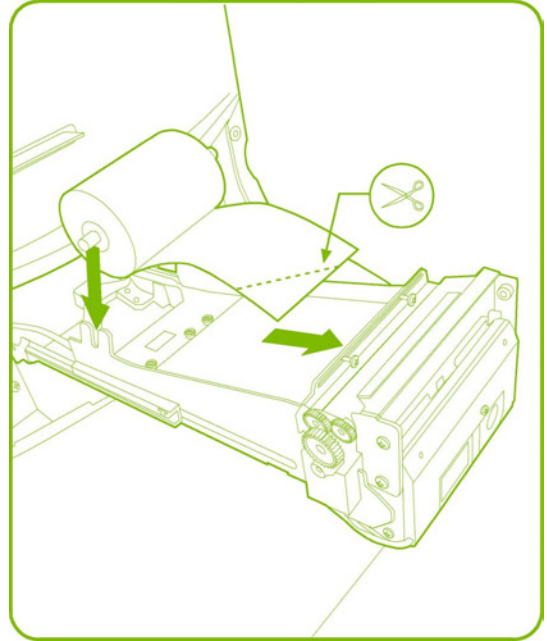
Clean the touch screen regularly, using non-abrasive cleansing towelettes, specific for this purpose. Wash your hands frequently while using the equipment.

### 7.2. PAPER ROLL CHANGE

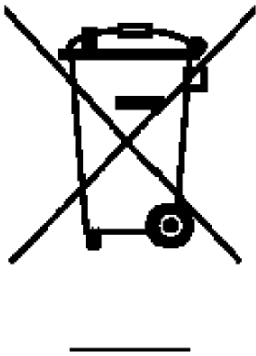
To change the paper roll, lift the printer cover, pull the printer towards you on its rails and insert a new roll, as shown the figure. In this case, it must be used the paper roll that is 40m long and the 86mm shaft.

When inserting the paper, the printer will automatically pull it and cut it.

To use the 175m long paper roll, it must be placed through the maintenance lid. To do so, use the 112mm shaft and place it in the fixed guides in the equipment interior.



### 7.3 EQUIPMENT DISPOSAL



All electrical and electronic products should be disposed of separately from the municipal waste stream via designated collection facilities appointed by the government or the local authorities.

This crossed-out wheeled bin symbol on the product means the product is covered by the European Directive 2002/96/EC.

The correct disposal and separate collection of the equipment will help prevent potential negative consequences for the environment and human health. It is a precondition for reuse and recycling of used electrical and electronic equipment.

## 8. TECHNICAL SPECIFICATIONS

Model:	DPONE
Manufacturer:	DAVI & CIA C/Murcia 35 nave G E08830 Sant Boi de Llobregat Barcelona – SPAIN
Display:	12,1" Touch screen (4:3) 800 x 600 pixels
Weight:	23 kg (aprox.)
Max. external dimensions:	460x335x530 mm
Power supply:	115/240 Vac – 50/60 Hz
Consumption:	In operation, 80 VA máx.
In operation:	
Temperature:	+10 °C a +40 °C
Humidity:	30 % a 75 %
Print:	Thermal printer 8 points/mm. Speed = 180 mm/s. Photocell detection of end of paper.
Paper width:	80 mm (40m / 175m)
EC applicable Directives	Low Voltage Directive <b>2006/95/EC</b> Electromagnetic Compatibility Directive <b>2004/108/EC</b>

### 8.1 CAMERA

	NTSC	PAL
Image sensor	1/4" SONY Super HAD CCD	
Sync system	2:1 Internal	
Resolution	480TV Lines (Horizontal)	
Effective Pixels	410,000	470,000
Video Output Signal	1.0Vp-p Composite 75ohm / USB 2.0	
Camera function	Live, Capturer, TPL mode, Normal mode	
Lenses	X1 Lens, X60 triple Lens, X10 Lens	
Disinfection	Disinfection with UV Lamp	
White Balance	Automatic White Balance	
Min. Illumination	0.1 Lux in F2.0	
Operative Temperature	14°F~122°F(-10°C~50°C)	
Humidity	Within 90%RH	
Dimensions	86(W) X 99.5 (H) X 245(L)mm	



## 9. GUARANTEE

---

We provide a **1-year** guarantee from the date of purchase. The guarantee covers manufacturing defects or defects occurring as a result of normal use and operation.

It excludes all removable parts such as batteries, wires, power supply devices, etc. Faults falling within the guarantee period shall be rectified free of charge upon presentation of the purchase receipt for the appliance. No other rights can be taken into consideration.

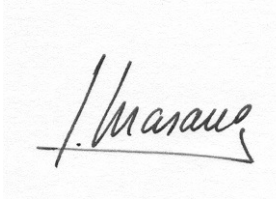
Return shipment is at the customer's expense if the appliance is anywhere other than at the customer's headquarters.

In the event of damage during shipment, guarantee rights will be granted only if the appliance is shipped in the original packaging. You are therefore recommended to keep the original packaging.

Following expiry of the guarantee period, all services requested will be dealt with by our specialist technicians at the user's expense.

**10. CE DECLARATION OF CONFORMITY**

<b>CE DECLARATION OF CONFORMITY</b>	
<b>FABRICANTE PRODUCTO:</b> <i>PRODUCT MANUFACTURER:</i>	DAVI & CIA S.L.
<b>DIRECCIÓN:</b> <i>ADDRESS</i>	C/ Murcia, 35, Nave G Polígono Industrial Can Calderón E08830 Sant Boi de Llobregat BARCELONA - ESPAÑA
<b>DECLARAN BAJO SU RESPONSABILIDAD QUE EL PRODUCTO:</b> <i>DECLARE UNDER THEIR RESPONSIBILITY THAT THE PRODUCT</i>	
<b>Marca</b> <i>Brand</i>	DERMOPRIME
<b>Nombre</b> <i>Name</i>	dpone
<b>Tipo</b> <i>Type</i>	EQUIPO ELECTRONICO Electronic equipment
<b>Finalidad Prevista</b> <i>Intended Use</i>	Equipo analizador de piel. Skin analyzer equipment.
<b>CUMPLE LOS REQUISITOS DE LAS DIRECTIVAS:</b> <i>CONFORMS WITH THE REQUISITES OF THE DIRECTIVES</i>	
<b>EC Directive 2004/108/EC</b>	Directiva de Compatibilidad Electromagnética ( <i>Electromagnetic Compatibility Directive</i> )
<b>EC Directive 2006/95/EC</b>	Directiva de Baja tensión ( <i>Low Voltage Directive</i> ).
<div style="display: flex; justify-content: space-between;"> <span><b>FECHA:</b> 01 de Junio de 2009</span> <span><b>DATE:</b> 01<sup>st</sup> June 2009</span> </div>	

<b>Nombre:</b> <i>Name</i>	J.Masana
<b>Firmado:</b>  <i>Signed</i>	
<b>Cargo:</b> <i>Function</i>	DAVI & CIA

# DAVI & CIA

---

C/ Murcia, 35 Nave G Pol.industrial Can Calderón.  
E 08830 Sant Boi de Llobregat. Barcelona. Spain

Tel. +34 93 654 32 32  
Fax. +34 93 654 16 62

[info@davia.com](mailto:info@davia.com)  
[www.davia.com](http://www.davia.com)