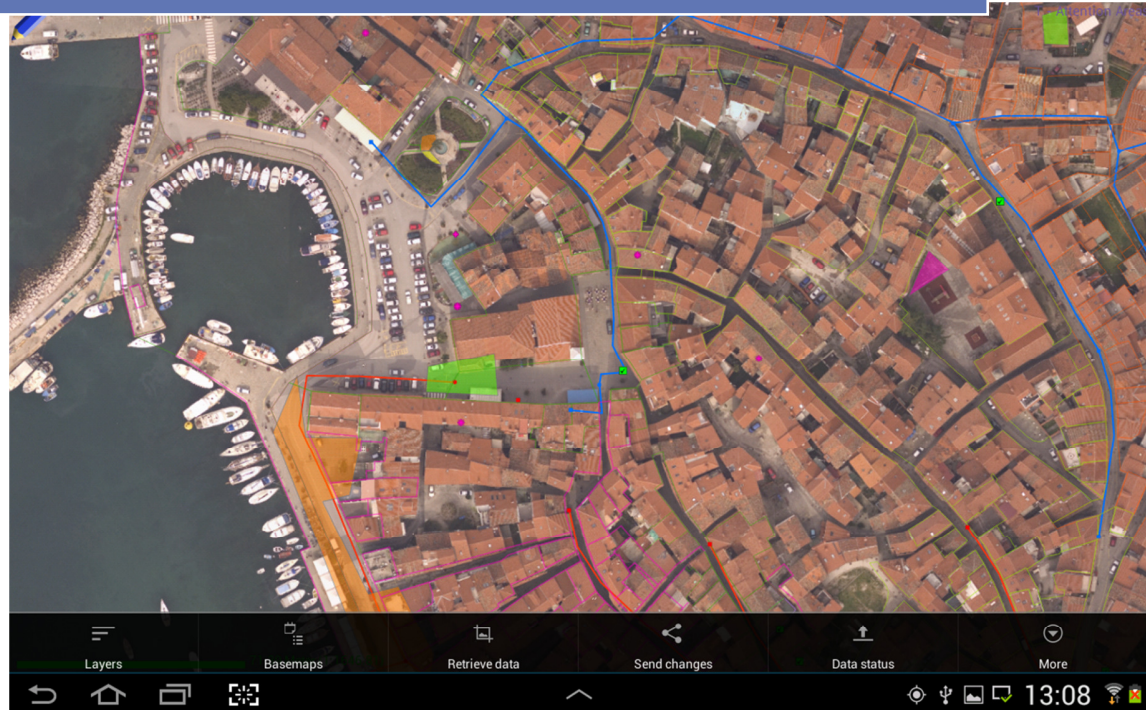


# GDI Field Map Desktop

## User Manual



GDI GISDATA Ljubljana

<http://fieldmap.gdi.net>

## Table of Contents

<b>1</b>	<b><i>GDi Field Map Desktop User Manual</i></b>	<b>1</b>
<b>2</b>	<b><i>Data Export tool</i></b>	<b>1</b>
<b>3</b>	<b><i>Data Import tool</i></b>	<b>1</b>
<b>4</b>	<b><i>GDi Field Map Android app User Manual</i></b>	<b>2</b>
<b>4.1</b>	<b><i>Main Menu</i></b>	<b>2</b>
<b>4.2</b>	<b><i>Closing the dialogs</i></b>	<b>3</b>
<b>4.3</b>	<b><i>Map navigation</i></b>	<b>3</b>
<b>4.4</b>	<b><i>Data creation and editing</i></b>	<b>4</b>
<b>4.5</b>	<b><i>Data review and search</i></b>	<b>5</b>
<b>5</b>	<b><i>Walk-through Example 1: Export your data from ArcMap</i></b>	<b>6</b>
<b>6</b>	<b><i>Walk-through Example 2: Create a new map feature</i></b>	<b>6</b>
<b>7</b>	<b><i>Walk-through Example 3: Modify map feature</i></b>	<b>7</b>
<b>8</b>	<b><i>Walk-through Example 4: Review the updates</i></b>	<b>8</b>
<b>9</b>	<b><i>Reference Guide</i></b>	<b>9</b>
<b>10</b>	<b><i>Frequently Asked Questions</i></b>	<b>12</b>

# 1 GDi Field Map Desktop User Manual

This documents describes how to use GDi Field Map Desktop. After user sets-up and configures the ArcMap document for the mobile use (see Installation and Configuration Guide), he/she may start using and managing the data in the field by his/her smartphone or tablet with Android OS.

The following tools are provided with the GDi Field Map Desktop product and are documented here:

- Data Export tool in ArcMap
- Data Import tool in ArcMap
- GDi Field Map Android apps ( User Manual and Reference Guide).

## 2 Data Export tool

Data Export tool is a GDi Field Map tool for ArcMap that exports data into a format for Android application. If you do not have the tool available in your ArcMap toolbar, check the [Installation Manual](#) and [Configuration Manual](#).

To export data to your Android device, open the ArcMap document that you have configured for GDi Field Map and do the following:

1. Position the map so that visible extent represents area where you want to export the data.
2. Select ArcMap tool for export to Android device (»Export to Android«). A dialog opens.
3. Export folder is automatically suggested for you. You may also browse and create/select another folder where you have write permission and where you want to export the data. Click “Export”. If export is completed successfully it will open the created folder where your will be able to see the exported data.
4. Connect Android device to your ArcMap computer/device (eg. via USB, Bluetooth).
5. Locate GDi Field Map directory *FieldMap\_Server* on your Android device.

Select all exported subfolders (*Attachments, ServerData, Config etc..*) and copy them into the *FieldMap\_Server* folder on your Android device.

After you have exported and copied ArcMap data to Android device you can start using Gdi Field Map Android application.

## 3 Data Import tool

Data Import tool is a GDi Field Map tool for ArcMap that imports data from Android to File Geodatabase or Enterprise Geodatabase (ArcSDE) .

If you do not have the tool available in your ArcMap toolbar, check the [Installation Manual](#) and [Configuration Manual](#).

To import the data from your Android device follow these steps:

1. Connect your Android device to ArcMap computer and find directory *FieldMap\_Server* on your Android device.
2. Copy all the subfolders from *FieldMap\_Server* folder except subfolder *Basemaps* to any folder on your ArcMap computer where you have write permission. There is already a folder »Imports« created for your convenience in GDi Field Map Desktop installation folder.
3. Open the corresponded mobile map in ArcMap (must be the one, that you used for the export of these data). Click »Start editing« and select ArcMap tool for importing GDi Field Map data updates. A dialog opens.
4. Browse to the folder with the data copied from the Android device and start the import. The import will load the updates into temporary File Geodatabase.
5. Optionally: Verify the quality of the imported data that are loaded into temporary database. During the verification, you may change the data in the temporary database. You may also close and re-open ArcMap to continue work (for example next day). When your data are ok, you click the Import button to load data from temporary database to the main database ( the one that you originally exported the data from). You can not have one set of data in revive in the temporary database. Until you review the temporary database and load into it into main/target database (or reject the import), you cannot start importing another update from Android application.

## 4 GDi Field Map Android application User Manual

### 4.1 Main Menu

The main apps Menu is displayed when touching *Menu* system command on your Android device.



Figure 1 Main menu

The location of this command depends on your device. The main apps menu has commands:

- **Layers.** Enables access to data layers properties and selection of layer for creating new features-

- **Basemaps.** Provides capabilities to switch between the basemaps or set transparency.
- **Retrieve Data.** Gets the data from your ArcGIS Server or ArcGIS Online services. Not in use if you work with the ArcMap Export/Import.
- **Send Changes.** Sends the created/updated data to your ArcGIS Server or ArcGIS Online services. Not in use if you work with the ArcMap Export/Import.
- **Data Status.** Review local data and provide a simple search by attributes values.
- **More.** Lists additional functionalities such as Legend, Settings, Deletion of local data and Help.

See the *Reference Guide* section of this manual for more details.

## 4.2 Closing the dialogs

To close the current dialog without any action, you can use *Back* system button, which location is specific for your device. You often find it at the bottom of the screen, on the left side.

## 4.3 Map navigation

**Move/Pan** the map by dragging the map around with the finger.

**Zoom-out** of the map is done with a pinch gesture (touch the screen with two fingers and bring them closer together).

**Zoom-in** of the map is done by a spread gesture (touch the screen with two fingers and move them apart) or by a double tap.

**One short tap** on the map opens a dialog with a content that depends on the apps and map situation :

- **Add** command is displayed to create a new point if your layer in editing is a point.
- **Location** coordinates are displayed if you tap on the map location without any objects and if your layer in editing is line or polygon layer.
- **Objects List** (drop down menu) is displayed if you tap on the map where there are objects. You can tap the objects from the list and so you open the detailed information about the object and can edit its attributes.
- **Cancel (X)** is always displayed so that user can close the dialog raised by a short tap.

**One long tap** on the map opens a list of advanced functions

- **Snap To** command can be used while creating new map objects, *before* placing the point or vertex of the line or polygon. If current layer is a read-only layer, then "Snap to" command is not effective. The *Snap* command displays the near-by features:
  - By a short tap on each near-by feature displayed, this near-by feature gets highlighted.
  - By a *long* tap the feature gets selected. The tool then proposes closest vertexes of the selected near-by feature. User snaps to the corresponded near-by vertex by a *long tap* on the proposed vertex.

- **Map Full Extent** zooms the map to the extend of the vector data on the map. Extends are taken from the layer description created when retrieving data (when exporting data from main database) .
- **Zoom To Layer** displays the list of layers and basemaps. User may zoom the extend of any vector data or basemap layer by tapping the layer. Lists is closed by tapping system *Back* button.
- **Move To GPS location** moves the map to the current GPS position. If GPS receiver on your device is off, a dialog prompts to switch it on. There is an option to display accuracy label setting (see more on **More - Settings** command ). You can manage this option on Settings menu.
- **Autopan to GPS location** sets/unsets the autopan mode of the apps. When mode is turned on, the maps automatically pans in the way, that your current GPS position is always at the center of the screen.
- **Bookmarks** opens a dialog where you can enter a name for the current extend (confirm by tapping the *Pencil* icon). A dialog lists also bookmarks that you created before so that you can tap and zoom to different areas of interest easily.
- **Measuring Tool** measures line length or area size. Measurement units are defined by default mobile map units. User draws line or polygon and measured quantities are displayed in the top right corner of the map. Text colors can be suited to be more visible on your map **More - Settings** command.

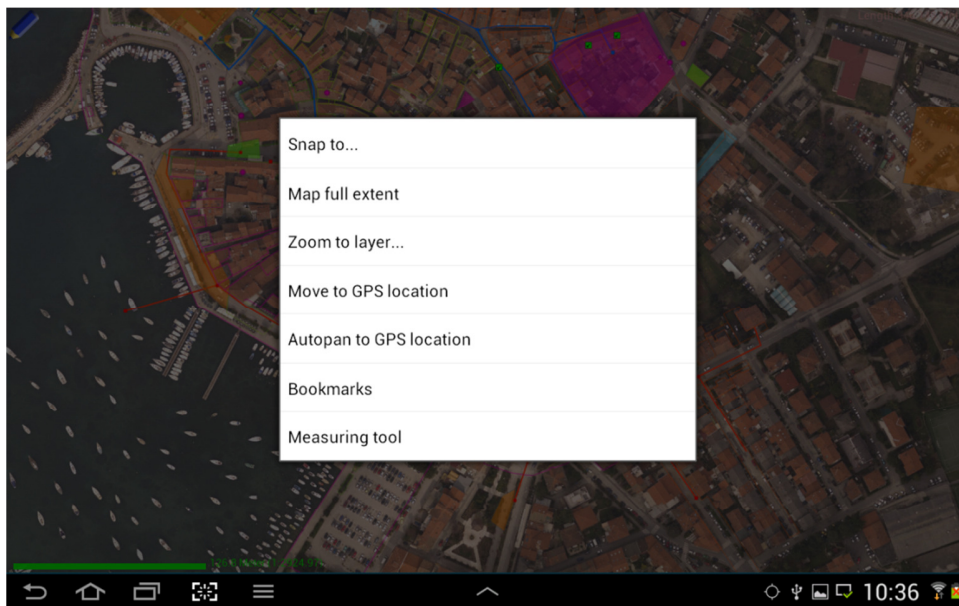


Figure 2 Advanced functions with long tap

## 4.4 Data creation and editing

User can edit one data layer at a time. The name of the layer that is currently in editing is displayed in the top right corner of the screen.

The layer for the editing is selected via main apps menu “Layer” command.

To create a new map feature, user simply taps on the map to create points.

If activated editing layer is line or polygon, then user starts drawing the line or polygon by clicking first on Start drawing button (pencil) on the top left corner. User then taps on the locations on the map to specify where vertexes of the line or polygon are located (he/she may use advanced snapping for this) . When drawing is completed, user taps the *Stop* drawing icon on the top left corner of the screen again.

When drawing is completed, a dialog opens, where editing form is available. User can edit attributes, manage attachments such as photos and delete object via this form (see Figure 3).

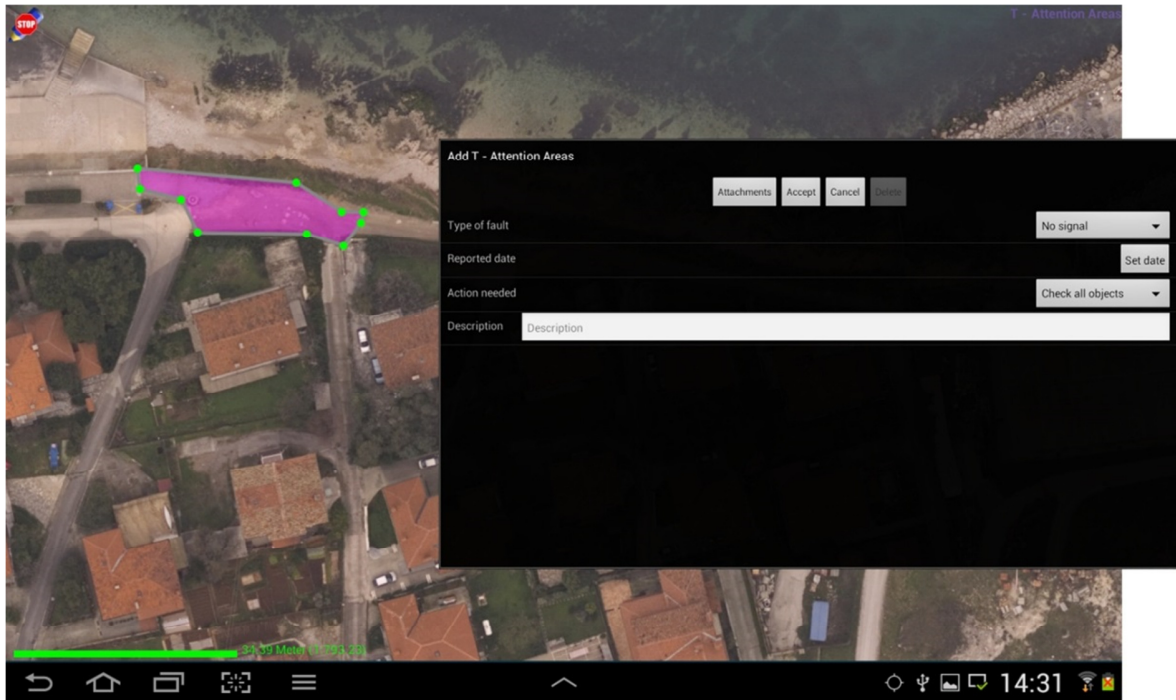


Figure 3 Create map object polygon and type-in its attributes descriptions

The editing form is not available only for new features. It is possible to edit the attributes of the existing features and add new photos to the existing features (feature class attachments must be created in main geodatabase). Feature editing is done by tapping the map feature and providing new information via the same edit form dialog as available at feature creation. Graphical editing of the existing feature is not possible.

## 4.5 Data review and search

"Data Status" command displays a list of data layers. A short tap on a data layer displays a list of locally stored objects of this layer. There is also an entry text box (positioned above the list), where user can search by attribute values. See Figure 4.

*Example: If user selects data layer "Attention areas" and types-in a search string "leak", then GDi Field Map would search for and list all the "Attention areas" where any attributes value would include "leak" text (for example leak, leakage, leaks in the Description attribute).*

Objects that were created or updated on Android are marked with red color.

If user makes a *long* tap on the object from the objects list, then the attributes editing form opens.

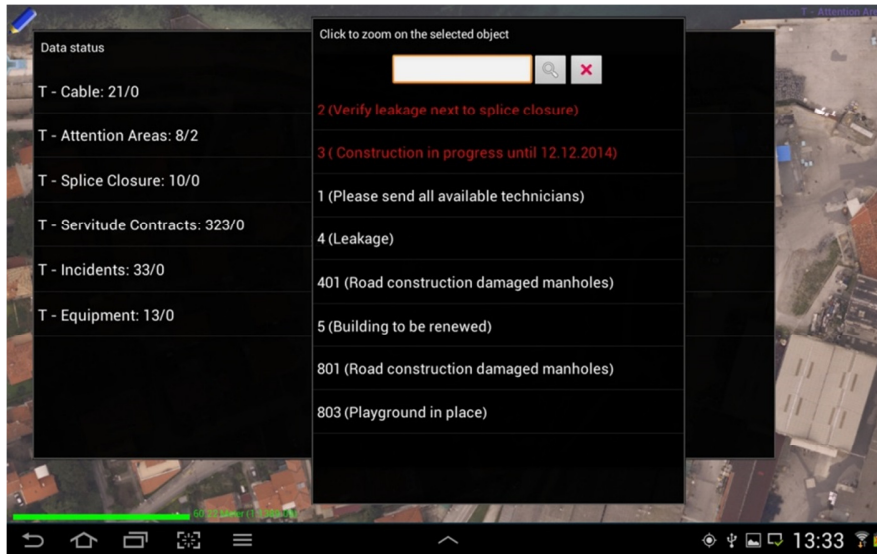


Figure 4 Data review and search

A *short tap* will highlight the object and zoom the map to the object. User shall close the dialogs by system *Back* button to see the highlighted object behind the dialogs.

## 5 Walk-through Example 1: Export your data from ArcMap

If you have just set-up a new map, follow *the Configuration Guide* first to configure map export/import and copy the basemap to Android. Then, follow this steps each time you want to export data to the Android device:

1. Set your visible map extent to the area you want to export to Android
2. Run the Export Tool in ArcMap
3. Locate the installation folder *FieldMap\_Server* on your Android device
4. Copy the contents of the exported folder (subfolders *Attachments*, *Server*, *config* etc) into *FieldMap\_Server* folder on Android and overwrite all existing subfolders there, if any exists.

Open GDi Field Map Android apps and start using it.

## 6 Walk-through Example 2: Create a new map feature

Go to Menu and select "Layers" command. The Layer Manager opens.

1. Scroll through the list of data layers and find the layer, that you want to edit. Check it in the first column (*Pencil* icon column). Only one layer can be edited at the time. The name of this layer is displayed in top right corner of the map.
2. a) Optionally – set layers visibility on Layer Manager . Layers that are set as visible can also be identified. Scroll through the list of layers and check every layer that you want to be visible (put a check on the second column checkbox -*Eye* icon).



- b). Optionally – set transparency of the layers on Layer Manager. Scroll through the list of layers and enter transparency for each layer from 0 and 100 (100 stands for no transparency and is a default value)
3. Tap system *Back* button to close the Layer Manager dialog.
  4. Tap *Start* drawing icon (pencil located on the top left corner) when drawing lines or polygons. For creating points, just simply tap on corresponded map location. Complete drawing by tapping *Stop* drawing icon (located on the top left corner). A dialog opens where you enter description (attributes values) of the created map features.
  5. Attach photos (optionally, if attachments are created on layer): Click Attachments on the top of the dialog. Take a photo or select the existing one from the device.
  6. Tap on Accept to save and close the dialog.

## 7 Walk-through Example 3: Modify map feature

### Option 1 - By selecting feature on the map

1. Tap on the map where feature is located. A list of data layers found on the tapped location is displayed.
2. Tap corresponded data layer and then tap the feature you want to modify. The editing form opens.
3. Click Edit and modify information you need to.
4. Tap on Accept to save and close the dialog and to continue with editing.

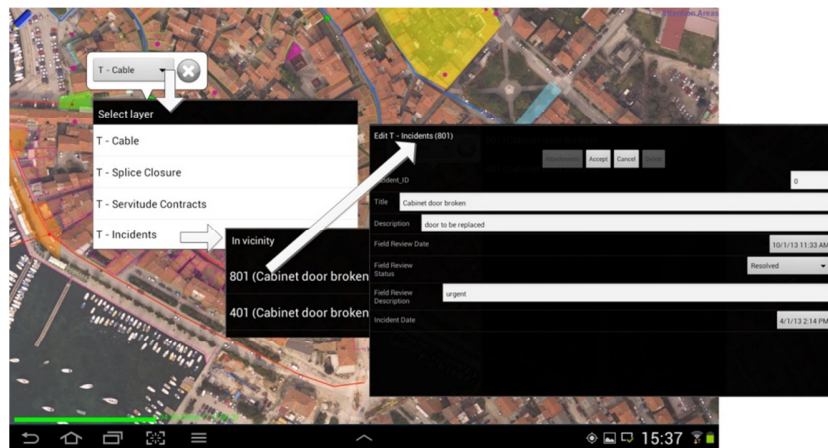


Figure 5 Modify feature by tapping on the map

### Option 2 - By selecting feature from the list or search

1. Select "Data Status" command and tap corresponded data layer. A list of features appear
2. If list is too long, you can make use of "Search" to find feature of interest more easily
3. Option a) Long tap on the feature in the list. This will load the feature dialog where you can edit attributes and manage attachments (photos)

Option b) Short tap on the feature in the list. This will highlight the feature on the map and zoom the map to the feature. Close the dialogs by tapping system *Back* button. Tap on the highlighted map object and load the editing form for the feature where you can edit attributes and manage attachments (photos)

## 8 Walk-through Example 4: Review the updates

### Verify which data you created and modified on Android

1. Go to GDi Field Map Menu and select "Data Status" command. The Data Status dialog opens. It shows a list of layers along with the number of map features that were locally modified.
2. Click the layer and the list of all map features appears. The modified features are labeled with red color. Select a feature you are interested in from the list:
  - a. Single tap on the feature will highlight the feature and zoom to the feature. You need to use "Back" system button to close dialogs and view the highlighted feature.
  - b. A long tap on the feature will open dialog where you can access the feature attributes and attachments.

### Import data to ArcMap

1. Connect your Android device to the computer with ArcMap. Copy all subfolders except Basemaps of Android *FieldMap\_Server* directory to the ArcMap computer.
2. Open ArcMap mobile map document. Select GDi Field Map Import Tool and start the import from the folder you just copied from Android
3. Review the updates in the temporary database if you need to do so.
4. Launch the updates from temporary database into the main geodatabase, from where the data were originally exported by clicking Import button on the Import Dialog.

### Clean all local data

1. It is sometimes useful to clean all local data. For example, when you start working in different location or when you want a better performance. If you decide to clean all your local data, verify first that you have imported all your data before to ArcMap.
2. Use "Delete data" command on main Field Map Menu. This will delete all your local data and only the basemap will remain. Other data have to be downloaded from the server. This assures you have only the latest version of data in your Field Map Android application.

## 9 GDi Field Map Android application Reference Guide

### Layers menu command



This command shows the list of the layers available in the application. There are 3 settings available to the user for each layer.

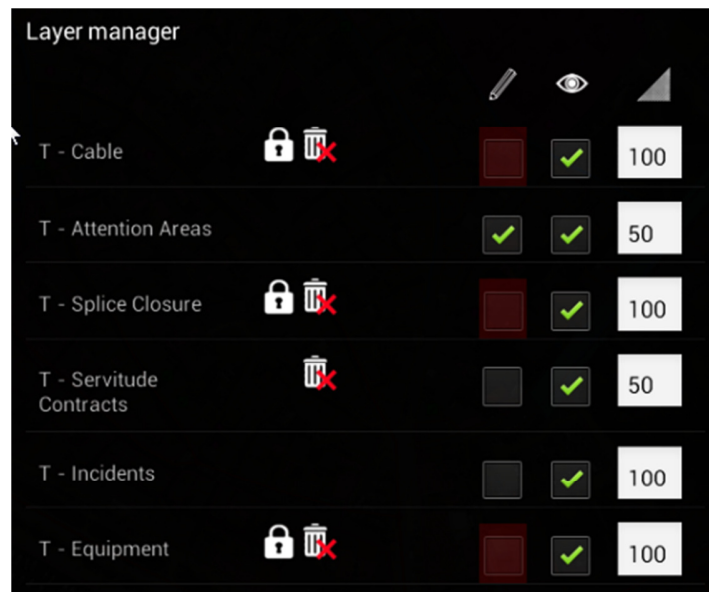


Figure 6 Layer manager

- **Editing activation** (column with a Pencil icon) where user selects a layer to be active in editing. Only one layer can be selected at a time. The name of the activated layer is shown on the top right corner of the map.
- **Identity activation** (column with an Eye icon) where user defines if objects of this layers are listed when user taps on the map location. If activated, user can see objects properties when he/she taps on the map. If not activated, objects are visible on the map, but its properties cannot be displayed by tapping on the map.
- **Transparency** (column with a Triangular icon) where user specifies the transparency in percentage. Default value 100 means no transparency for the layer.

The dialog also graphically displays if editing and deletion operation are allowed on Android apps for this layer:

- Data layer is read-only if a lock appears next to the data layer name (cannot be edited, new objects cannot be created):
- Data Layer objects cannot be deleted if a bin appears next to the data layer name

### Basemaps menu command



This command displays a list of basemaps on the local android apps. User may select which basemaps are visible and the transparency of the basemaps.

### Retrieve Data menu command



This command is used if data exchange is implemented via ArcGIS Server or ArcGIS Online services. The command is not in use when you export/import data over ArcMap.

When user selects this command, application downloads data from ArcGIS Server or ArcGIS Online. User has to make internet connection before. Services data are first displayed for a preview so that user can zoom to the extent he/she wants to download. Data are downloaded only for the map extent, that is visible on Android device.

User must specify username and password for the services

a) ArcGIS Online services: User must have his/her own named user credentials for the ArcGIS Online Services. This is not included with GDi Field Map. She/he must supply the credentials everytime when required to exchange data.

b) ArcGIS Server services: "More - Settings" command is used to enter ArcGIS Server username and password. Username and password for the ArcGIS Server services are stored on device.

### Send Changes



This command is used if data exchange is implemented via ArcGIS Server or ArcGIS Online services. The command is not in use when you export/import data over ArcMap.

When user selects this command, application uploads data and attachments to the ArcGIS for Server services or ArcGIS Online Services. User should connect to the internet before . User must specify username and password for the services

a) ArcGIS Online services: User must have his/her own named user credentials for the ArcGIS Online Services. He must supply the credentials everytime when required to exchange data.

b) ArcGIS Server services: "**More - Settings**" command is used to enter ArcGIS Server username and password . Username and password are stored on Android device for ArcGIS Server.

## Data Status



By selecting this command, user opens a dialog where layers are listed for the map in use. For each layer, there is a name, the total number of local features in the layer and the number of local-only features.

For example, "Initiatives 324/2" tells that there are 2 initiatives created or updated among total of 324 initiatives on Android device. Both changes will be sent to the web services via "Send services" or imported via ArcMap. If user clicks on the layer name, a dialog shows the list of the created and updated features of this layers. By clicking on the item, the map zooms to this item.

## More

The **More** command is a placeholder for commands that are not used so frequently. These commands are

- **Legend** opens lists of map symbols for the data layers. Symbology corresponds to the symbology defined in office map and its content.
- **Delete Data** deletes all local data - data that have been downloaded, updated or created locally.
- **Settings** opens a dialog where user configures web services and application
  - Services types are specified. User specifies whether he/she uses ArcGIS Online Services or ArcGIS Server services. In the case of ArcGIS Server, he/she enters her/his name and password. Password should not contain special characters (whitespace,slash/backslash etc.). In the case that he/she selects ArcGIS Online services, Application ID has to be typed in. If user has decided to user GDi Field Map Desktop for data exchange, ArcGIS Online should be un-checked.
  - Fullscreen mode of GDi Field Map apps is shown/hidden.
  - GPS accuracy label can be turned on/off. If GPS accuracy label is turned on, then the accuracy label would be visualized on the map when positioning to GPS location. GDi Field Map uses ArcGIS libraries to informally visualize accuracy (<http://resources.arcgis.com/en/help/android-sdk/api/reference/com/esri/android/map/LocationService.html>).
  - The text color displaying the layer name in editing (current layer) is specified (default color white)
  - Scale label color is specified (default green)
  - The text color displaying measured values (default light red).
- **Help** lists short explanation of commands
- **About** shows the version and contact information.

## 10 Frequently Asked Questions

### What are data projection requirements ?

Any valid ArcGIS pre-defined projection can be used for the basemap and other data. All the data should use the same projection.

### What is the maximum size of the basemap and other data?

This mainly depends on your Android device – its available storage size (SD card size) and processing power. If you decide to download over 10 layers with over 1000 data at once, this will slow down the application. It is recommended that you download a reasonable map extent, do your edits, synchronize and clean local data and then continue to work on another extent.

### May I download the basemap, too, like for example in DEMO version of the application ?

The download of basemap is not included in the application at the moment, It is planned for future releases.

### Does Field Map support ArcGIS Attributes Domains?

It supports Coded Value Domains. Android user will have Coded Value domains available on the dialog when editing attribute values.

### Will other ArcGIS users in the office see my updates and when ?

After user “Send changes” these changes are sent to the GIS central database and are available to everyone. It depends on your organisations and type of work, how frequently you send the changes.

### How many MB of data are typically downloaded or uploaded? Can I avoid data transfer costs completely?

If you have any option for free wireless then download/upload data whenever you are in the reach of the free transfer to avoid costs. Otherwise, only vector data are transferred, which is less critical in size than raster transfers (basemap are therefor copied in-before). However, you should be aware that main cost would then come from your photos attachments.

Check for the latest documentation on GDi Field Map Website <http://fieldmap.gdi.net>