
REGISTRATOR VIEWER

USER MANUAL

Version 5.8



INTRODUCTION

This user's manual contains useful information about the functions and operating procedures of the Registrator Viewer. To ensure correct use, please read this manual thoroughly before beginning operation.

CONTENTS

1. System Requirements	3
2. Key Features	3
3. Installation	3
4. Interface Overview	4
5. Basic Operations	8
• Loading Video	
• Playing Back Video	
• Changing to Miles Per Hour	
• Saving Video Frames and Screen Shots	
• Groups	
• Saving Videos	

SYSTEM REQUIREMENTS

- Operating System: Windows XP / Vista / 7 / 8 [x32 and x64]
- Minimum 2GB RAM

KEY FEATURES

- Integrated codecs for MOV / MP4.
- Automatic files search.
- Video zoom in/out and frame by frame playback.
- Integration with Google Maps.
- Export video fragments without recompression - lossless editing.

INSTALLATION

Simply copy RegistratorViewer_v5.8.exe to your desktop. Double click the file to launch the software. No further installation is required.

USER INTERFACE

The user interface is made up of **5** sections.

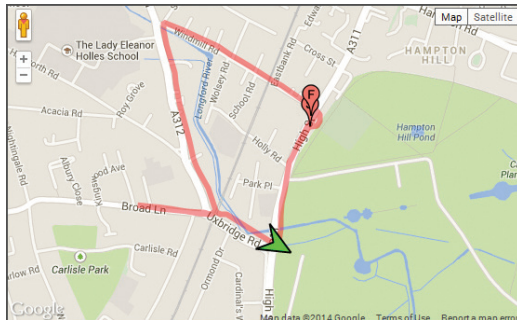


1.

The **Video Window** displays the footage.

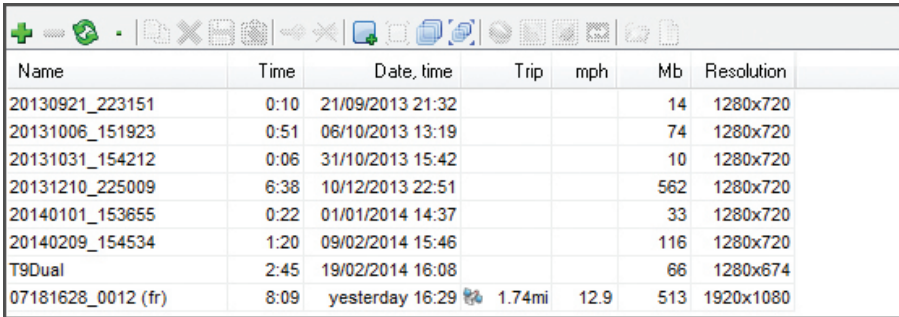


2.



The **Map Window** renders a real time presentation of the vehicle's position on Google Maps corresponding to the video footage.

3.



Name	Time	Date, time	Trip	mph	Mb	Resolution
20130921_223151	0:10	21/09/2013 21:32			14	1280x720
20131006_151923	0:51	06/10/2013 13:19			74	1280x720
20131031_154212	0:06	31/10/2013 15:42			10	1280x720
20131210_225009	6:38	10/12/2013 22:51			562	1280x720
20140101_153655	0:22	01/01/2014 14:37			33	1280x720
20140209_154534	1:20	09/02/2014 15:46			116	1280x720
T9Dual	2:45	19/02/2014 16:08			66	1280x674
07181628_0012 (fr)	8:09	yesterday 16:29	1.74mi	12.9	513	1920x1080

The [File List](#) shows all files currently loaded as well as duration, date and time, resolution, size, trip length, average speed and whether the file is grouped with other files.

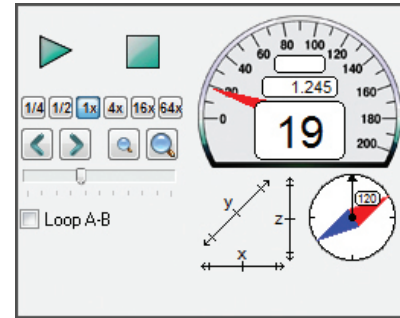
You can drag columns in the file list and sort the list by any of them. You can also drag and drop files into this window directly.

Files that have been protected by the G-Force Sensor are prefixed with *EMG_*

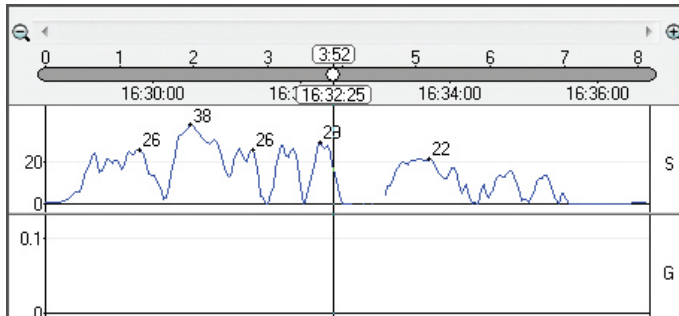
4.

The **Control Panel** contains a transport section consisting of Start, Stop, Playback speed ($\frac{1}{4}$ to 64x), Previous / Next frame, Zoom in/out, Volume and Loop.

The Control Panel also includes a real time speedometer and compass.



5.



The **Graphics Window** displays a graphic representation of speed across a timeline extending the duration of the selected file.

You can also grab the cursor in this view to cue the video.

BASIC OPERATION

- Loading Video



To load videos click the green plus icon located at the top of the File List Window and navigate to the location of your video files. You can select all the files on the memory card by clicking Ctrl+A then Open. All the selected files will be loaded into the playlist.

All files belonging to the same trip (segmented by the loop record function) will be automatically grouped together and can be watched as one continuous file.

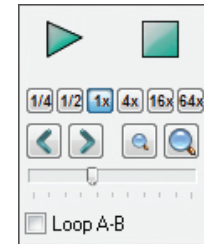
- **Playing Back Video**

To start playing back a file simply double click on it in the File List window. You can also highlight the file and click the play button in the Control Panel window.

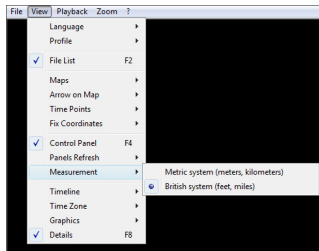
Playback speed can be set from 1/4 to 64x normal speed.

Use the arrow buttons to get to the next or previous frame and the zoom buttons to zoom in/out.

Control the volume of the audio with the volume slider.



- **Changing to Miles Per Hour**

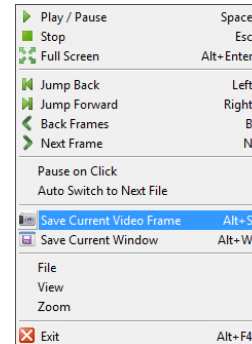


To switch from kilometers per hour to miles per hour go to View >> Measurement and choose “British system (feet, miles)”.

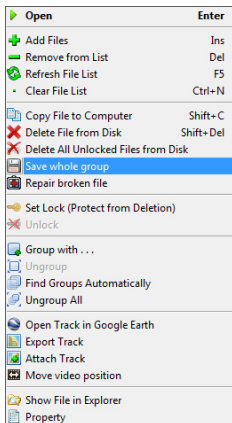
- Saving Video Frames and Screen Shots

To save a still image from a video, cue the video to the desired position and right click anywhere in the Video window. Choose Save Current Video Frame.

To save a screen shot of the whole program window right click and choose Save Current Window.



- Groups



When videos are loaded into the playlist, files that are part of the same journey (segmented by the loop record function) are automatically grouped together and treated as one continuous file.

To display all files separately right click anywhere in the files list window and select Ungroup All

To group them together again right click and select Find Groups Automatically.

- Saving Videos

To save videos to your computer highlight the video(s) you wish to save then right click the selection and choose Copy File to Computer.

To save grouped videos as one continuous file, right click the video and select Save whole group.