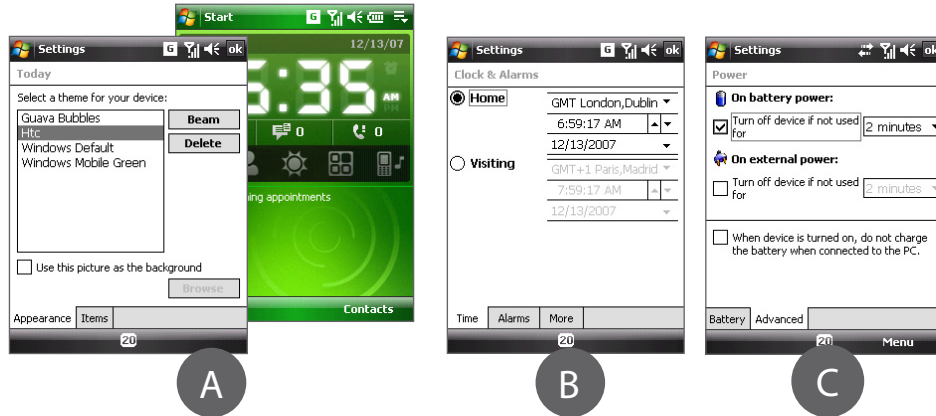


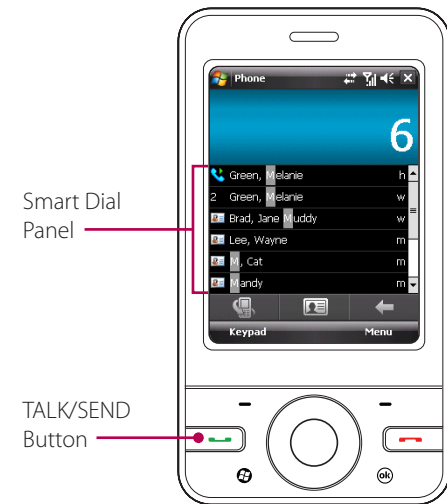
Personalize Your Device

- Change the Today screen background
Tap **Start > Settings > Personal tab > Today**.
- Set the date and time
Tap the **HTC Home** time display, then tap the **Time** tab.
- Manage power settings
Tap **Start > Settings > System tab > Power > Advanced** tab.



Make a Voice Call

- Press the TALK/SEND button or tap **Start > Phone**.
- On the Phone keypad, tap the keys with your finger or stylus to enter the phone number.
- The Smart Dial panel will display the matching phone numbers in Call History, as well as the matching contacts found on your device and SIM card. Select the number or contact you want to call, then press TALK/SEND.

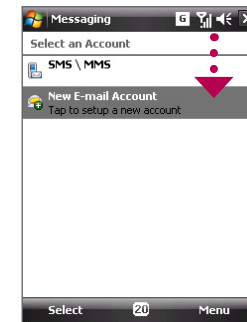


For hands-free phone conversation, connect the USB stereo headset or a Bluetooth® headset (not included) to your device.

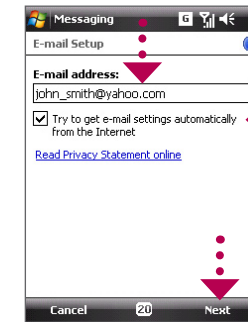
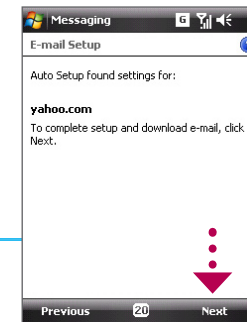
To learn how to connect a Bluetooth headset, refer to the User Manual.

Get E-mail On Your Device

Set up your device so you can send and receive e-mail messages using your favorite e-mail service.



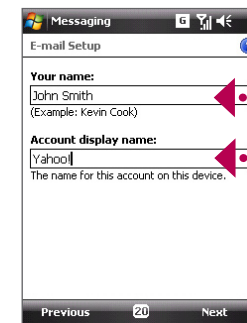
- Tap **Start > Messaging > New E-mail Account**.



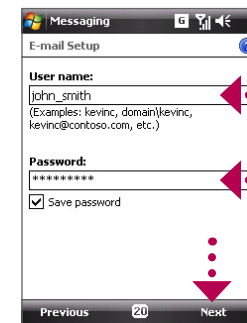
- Enter your e-mail address and tap **Next**.

- Auto Setup downloads e-mail server settings automatically to your device. Tap **Next**.

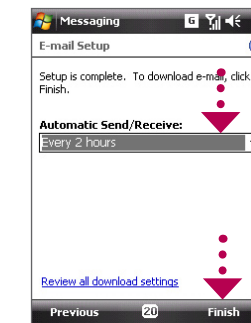
Note If Auto Setup is unsuccessful, you need to manually enter the settings in the succeeding screens.



- Enter **Your Name** and **Account display name**. Tap **Next**.



- Enter your **User name** and **Password** for the e-mail account. Tap **Next**.



- Choose how frequent you want your device to automatically send and receive e-mail, then tap **Finish**.

You can also synchronize your device with your company's Exchange Server so you can access your company e-mail.

Refer to the User Manual to learn how to get your company e-mails on your device.

HTC P3470 Read Me First

This **Read Me First** will help you get started with using your Windows Mobile® 6 powered device. We recommend that you have this guide handy when you start using your device.

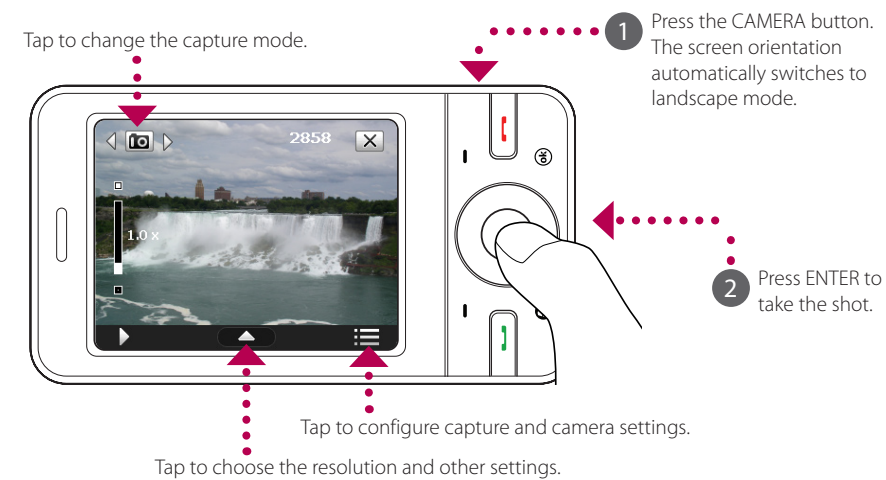
For a more complete reference, consult the User Manual that came with the device.

Secure Your Device

- To enable the SIM PIN
Enabling the SIM PIN requires you to enter the PIN before you can use the phone features of your device.
You can enable the SIM PIN by tapping **Start > Settings > Personal tab > Phone** and selecting the **Require PIN when phone is used** checkbox.
- To enable the device password
Enabling the device password requires you to enter a password to unlock the device after it has been left idle for a set period of time.
 - Tap **Start > Settings > Personal tab > Lock**.
 - Select the **Prompt if device unused for** check box, then select the time before your device asks for the password.
 - Select the **Password type**.
 - Enter and confirm the password, then tap **OK**.
- To enable the key lock
Enabling the key lock helps prevent accidental screen taps or button presses when the device is in your pocket or bag.
Lock the keys by tapping the **Launcher** tab () on the HTC Home, then tapping .
To unlock, tap **Unlock**.

Take a Photo

Use the Camera of your device to capture those precious moments.

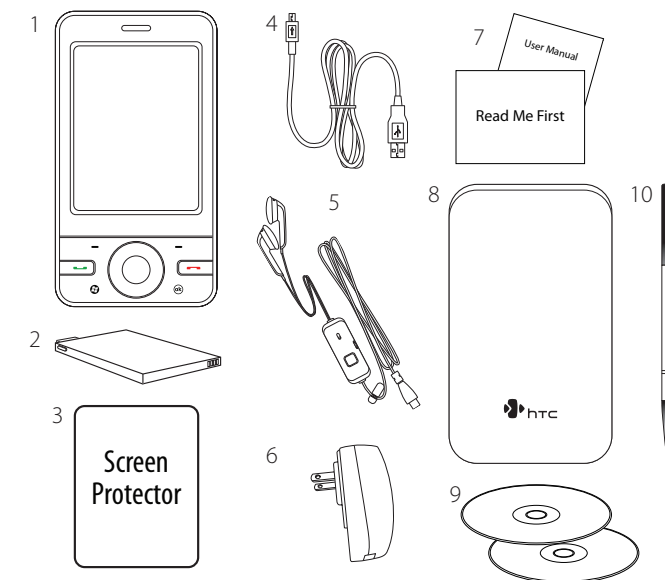


The photo will be saved to the My Pictures folder, unless you choose to delete it by tapping . Tap if you want to send the photo via MMS or e-mail.

Refer to the User Manual for more information on how to use the Camera.

What's in the Box

These are the items that you should find inside the box.



- PDA Phone
- Battery
- Screen Protector
- USB Sync Cable
- USB Stereo Headset
- AC Adapter*
- Read Me First and User Manual
- Pouch
- Getting Started Disc and Applications Disc
- Extra Stylus

* The AC adapter may vary depending on the country or territory where you purchased the device.

www.htc.com

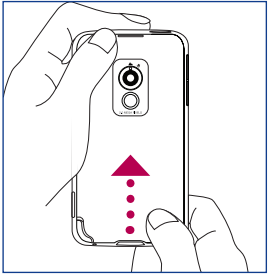


Before Using Your Device

A. Remove the back cover

Ensure that the device is turned off, then firmly push the back cover up with your thumb.

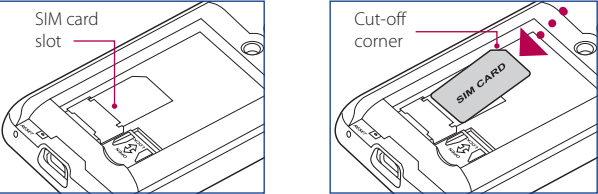
When the back cover disengages from the device, slide it up to remove.



B. Install the SIM Card

1 Locate the SIM card slot inside the battery compartment.

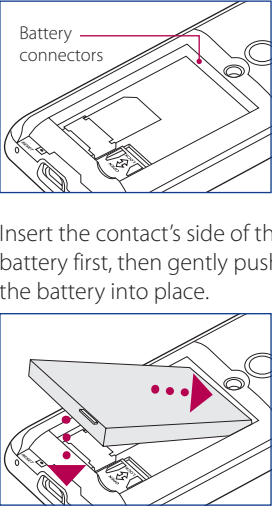
2 Insert the SIM card with its gold contacts facing down and its cut-off corner facing out the card slot.



C. Install the battery

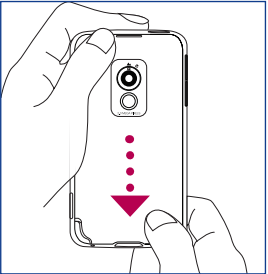
Install the battery by aligning its exposed copper contacts with the battery connectors inside the battery compartment.

Insert the contact's side of the battery first, then gently push the battery into place.



D. Replace the back cover

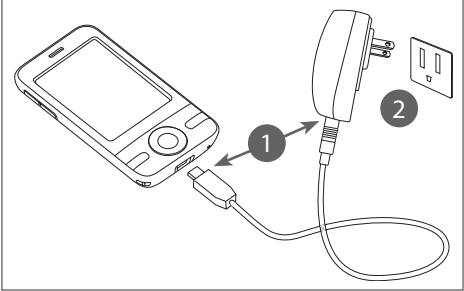
Align the back cover tabs with the holes on the upper side of the device, then slide it down until it clicks into place.



E. Charge the battery

The battery is partially charged out of the box. To charge the battery in your device, connect the AC adapter* to your device using the USB sync cable (1), then plug the AC adapter to an electrical outlet (2) to start charging. The battery is fully charged after about 3 hours of charging.

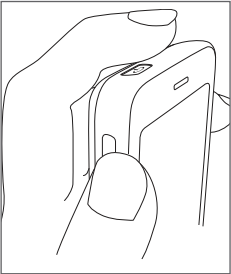
* The AC adapter may vary depending on the country or territory where you purchased the device.



F. Power on/off the device

Press and hold the POWER button for a few seconds to power on/off your device.

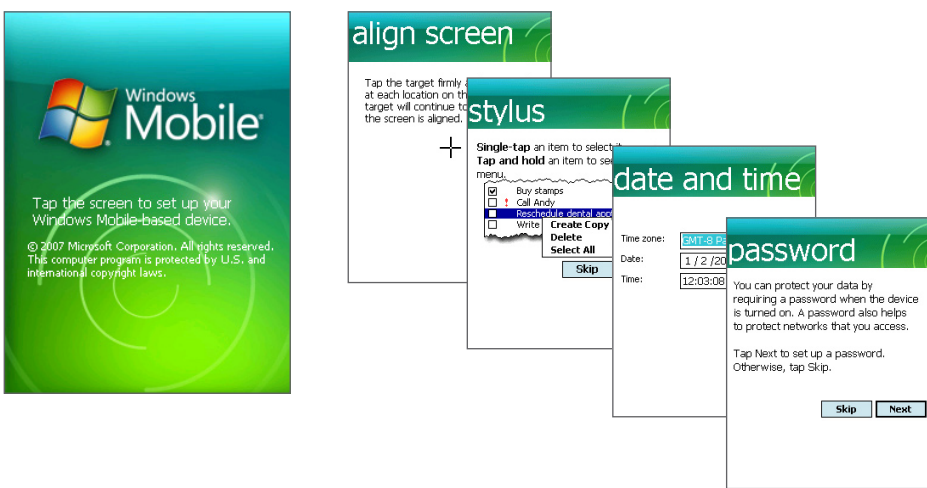
When powering off, a confirmation message will appear on screen. Tap **Yes** to power off the device.



Quick Setup Wizard

When you power on your device for the first time, a Quick Start Wizard will guide you through touch screen calibration, provide a quick tutorial on stylus operation and pop-up menus, and allow you to set the date, time, and a device password.

Follow the on-screen instructions to complete the wizard.



Synchronize Your Device and Computer

Synchronize your device with your computer to keep information such as Outlook e-mails, contacts, tasks, and appointments up-to-date on your device.


Set up synchronization software on your computer

Depending on the operating system of your computer, you will need either Microsoft ActiveSync® 4.5 (or later) or Windows Mobile® Device Center to synchronize your device with your computer.

Set up ActiveSync on Windows® XP

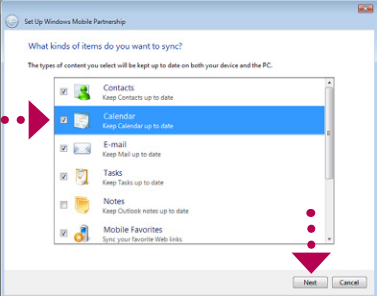
1 Install ActiveSync 4.5 on your computer from the Getting Started Disc.

2 Connect your device to your computer. In Windows Mobile Device Center, click **Set up your device**.

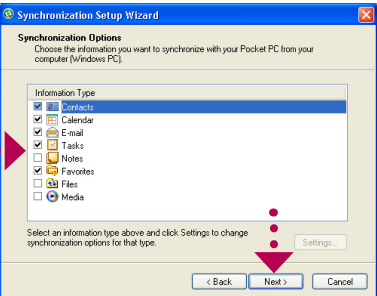


Set up Windows Mobile Device Center on Windows Vista®

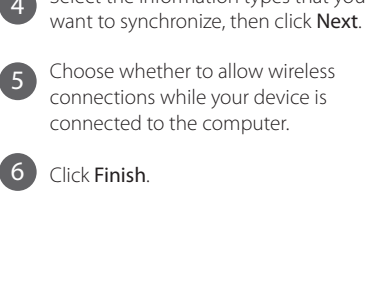
1 Connect your device to your computer. In Windows Mobile Device Center, click **Set up your device**.



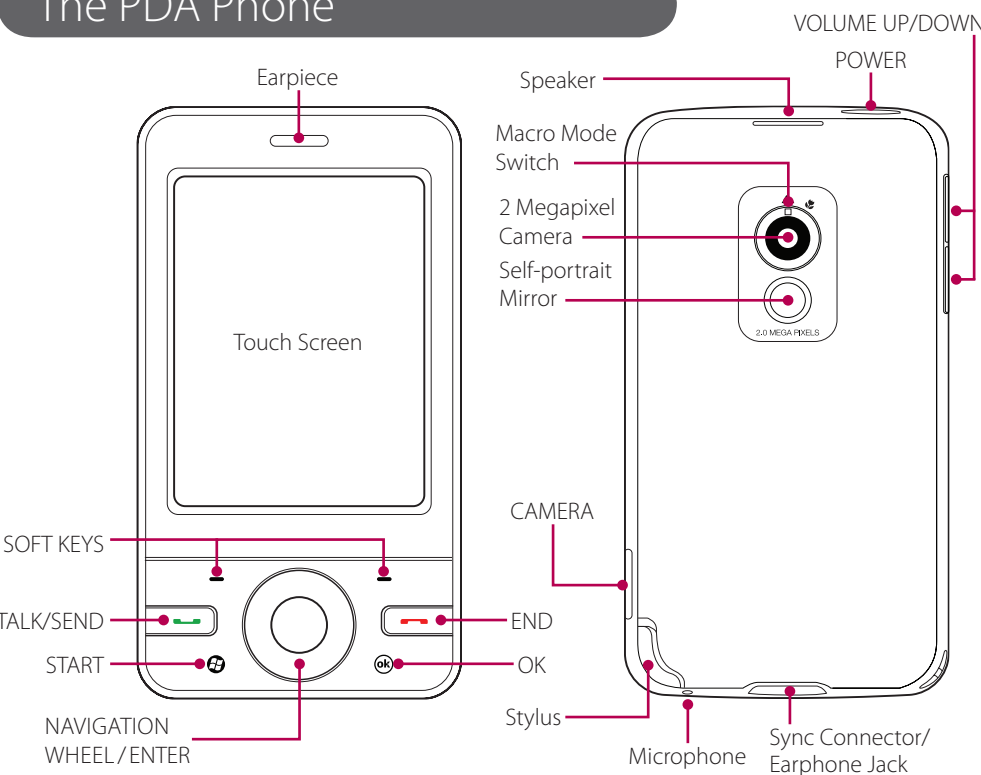
2 To synchronize your device with your computer, clear the **Synchronize directly with a server running Microsoft Exchange** check box and click **Next**.



3 To synchronize your device with your computer, clear the **Synchronize directly with a server running Microsoft Exchange** check box and click **Next**.

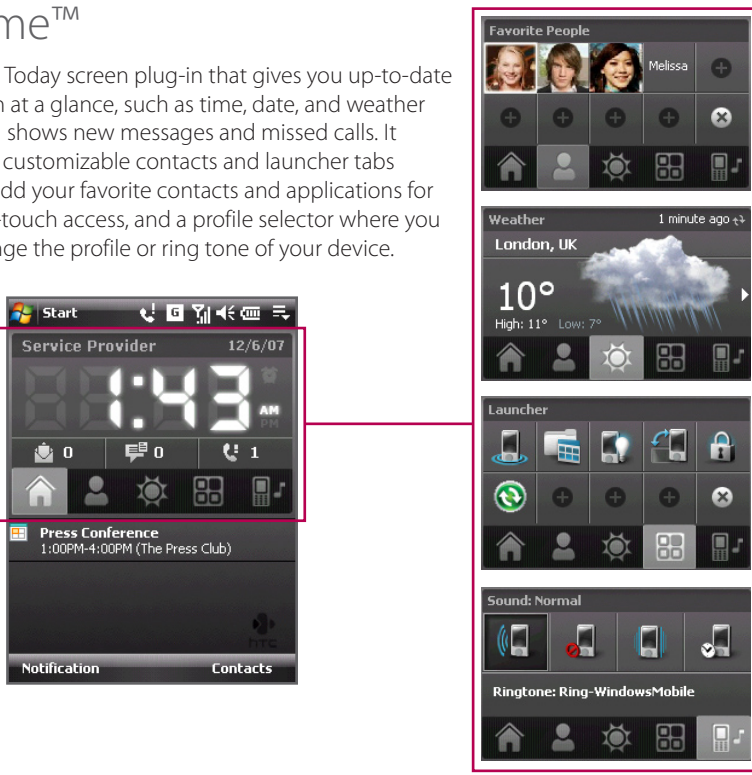


The PDA Phone



HTC Home™

HTC Home™ is a Today screen plug-in that gives you up-to-date local information at a glance, such as time, date, and weather information, and shows new messages and missed calls. It also comes with customizable contacts and launcher tabs where you can add your favorite contacts and applications for convenient one-touch access, and a profile selector where you can quickly change the profile or ring tone of your device.



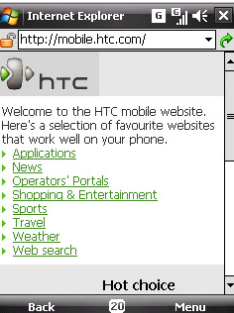
Go Online and Surf the Web

Connection Setup configures your device's data connections the first time you power on your device after you installed a new SIM card. After completing the **Connection Setup** wizard, you are instantly connected to the Internet through your wireless service provider's GPRS or EDGE network.

Note Connection to the GPRS or EDGE network may incur charges. Contact your wireless service provider for details.

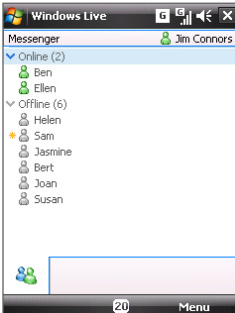
Surf the web

Tap **Start** > **Internet Explorer**



Chat with friends

Tap **Start** > **Programs** > **Windows Live**



Read news updates

Tap **Start** > **Programs** > **RSS Hub**

