



# N-audio Custom Guitar Electronics

Handbuilt boutique pedals and custom stuff  
Proudly handcrafted in Bulgaria, Europe

## 12 CHANNEL PROGRAMMABLE LOOPER

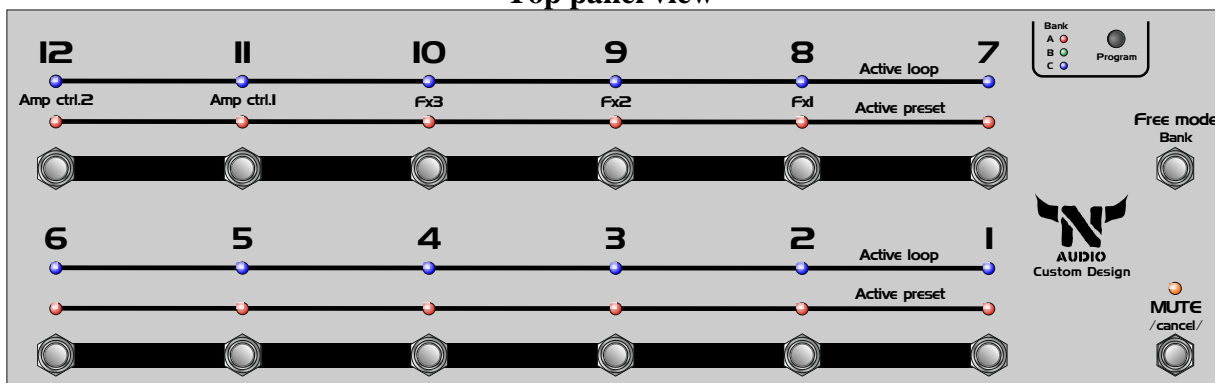
### User manual

#### 1. Introduction

N-audio 12-channel programmable looper is a floor-based switching system for musicians.

This device has 3 banks and each bank can store up to 12 presets, to a total of 36 independent presets. In addition, this looper has a special Free mode which enables you to quickly and dynamically modify the programmed presets. You can input up to 11 effects and two amp control circuits, with the last 3 effects plugged in the send-return of the amplifier. All loop commutation circuits are based on high-quality gold-plated relays. This gives you True bypass switching between effects while maintaining the optimal sound of your guitar. If required, besides the standard passive guitar input, you can use the additional buffered input, based on a high-quality low-noise opamp, working at 15VDC for maximum headroom without any sound distortion.

Top panel view

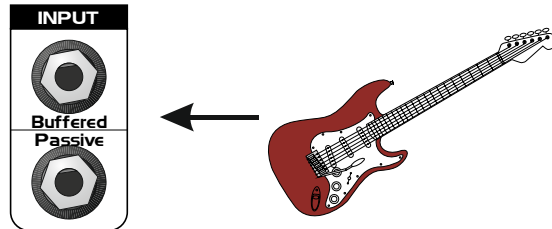


Bottom panel view

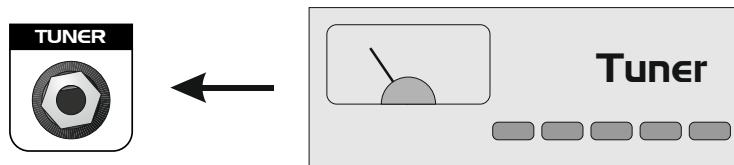


## 2. Basic connection:

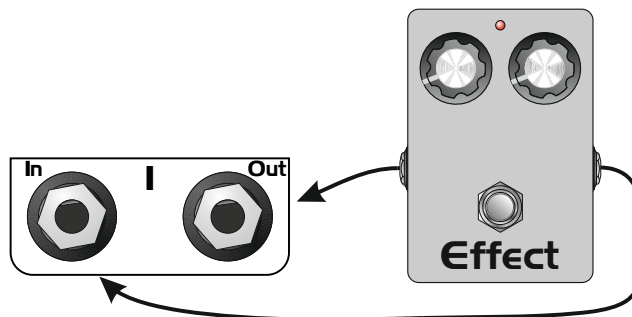
- Plug the guitar into one of the two inputs. If you are using high-quality cables and you don't want any additional devices in the way of the signal, use the passive input. Note that, because of the cable's specific capacity, you might experience loss of high frequencies in your sound. In this case, you can use the buffered input. It is your choice. Experiment and decide which of the two inputs you find better.



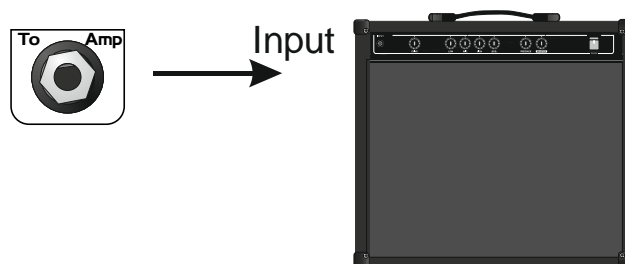
- Plug the tuner into the Tuner input jack.



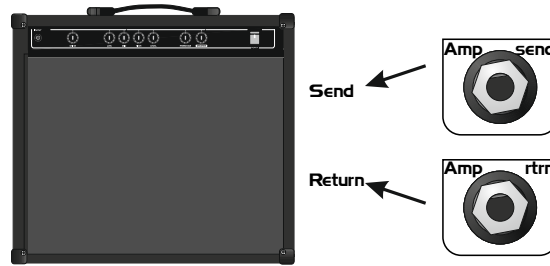
- Connect effects in the corresponding inputs.



- Connect your amp's input to the To Amp jack.

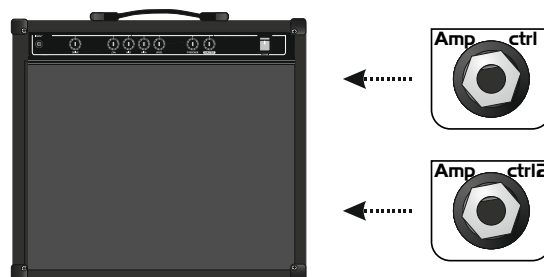


- Connect the effects in the amp's effect loop as shown:

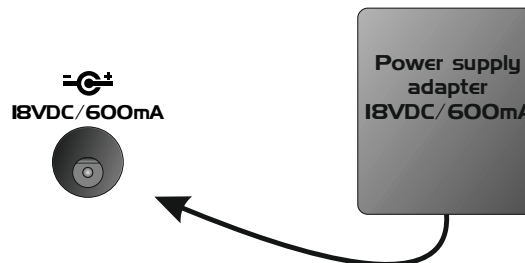


- The last two switches of the foot controller (11 and 12) are used to switch the amp's channels.

### Channel switching



- Plug the power supply adapter in the power jack. N-audio 12 channel foot controller uses 18VDC at 600mA.



## 3. Using the footcontroller:

### 3.1 Presets

Working with the foot controller is easy and intuitive. There are 12 buttons which control corresponding presets, as well indicate which loops are turned on. When you press a button the blue LED above it lights up, which indicates it is active. Red LEDs indicate which effects currently connected to the controller are on. In this way you always have visual indication of which preset you are using and which effects are turned on.

### 3.2 Preset banks

N-audio 12 channel footcontroller has 3 preset banks. Banks are indicated by a small LED in the upper right corner. Each bank has 12 presets, and with 3 banks with 12 presets each, you have a total of 36 independent presets. Changing banks is done by rapidly pressing the Free mode/Bank button twice. The order of changing banks is fixed at: Bank A -> Bank B -> Bank C -> Bank A -> Bank B -> Bank C.... etc.

### 3.3 Free mode

Free mode is a useful functional option which allows you to remove or add effects to a previously programmed preset. With Free mode you can also remove or add loops to the preset. To enter Free mode press the Free mode/Bank button once. Choose loops you want to remove or add to the circuit by pressing the corresponding footswitch. To exit Free mode press the Free mode/Bank button once. It's important to note that loops remain active until the next preset is applied. For a visual indication whether you are changing presets or you are in Free mode, note that in Free mode all three banks LED are lit, while if changing presets, only one of the corresponding presets LED is lit.

### 3.4 Going from Free mode to a preset from a different bank

If you want to jump to a different bank and a different preset while in Free mode, first press the Free mode/Bank button once to exit Free Mode, after that rapidly press the Free mode/Bank button twice to select the required bank, then simply choose a preset. The controller stores the last settings until another loop or preset is activated.

## 4. Programming:

Programming is easy and is done in a few steps:

1. Hold the Program button for more than 3 seconds. All blue LEDs will light up
2. Choose loops you want to use in the preset. In this step you can change the preset bank if the controller is currently in a different bank.
3. Press the Program preset again. Blue LEDs start flashing. Choose which preset you want to save by pressing the corresponding footswitch.

You have now programmed the preset. Now you have 2 options: either continue programming other presets following the above steps, or exit programming mode by pressing the Mute/Cancel button. You can use the Mute/Cancel button to return to a previous step while programming. For example, if you have chosen the loops you want to be in the particular preset and you have pressed Program, the controller stands by until you choose which preset these settings should be saved to. By pressing the Mute/Cancel button once, you can return to programming mode to edit your presets. Exit programming mode by pressing Mute/Cancel button again.

## 5. Specifications:

- 12 loop channels
- True bypass switching
- 36 independent presets stored in 3 banks
- Free mode for faster and more flexible work
- Fast and easy programming with just one button
- Double reinforced heavy duty footswitches
- High quality gold plated relays
- Passive and buffered guitar inputs
- Tuner output
- External pedal insert point between effects loops 4 and 5
- 2 jacks for amp control for channel switching
- Additional loop channels for 3 more effects in the amp's effect loop
- Power consumption at 18VDC – 350mA
- Dimensions: 500(W) x 160(D) x 55(FH) x 70(RH) mm
- Weight 3.3 kilograms
- Warranty: 3 years warranty