



Polar WearLink® + heart rate sensor with Bluetooth®

Getting Started Guide



Find product support



[http://www.polar.com/en/support/
Polar_WearLink_plus_transmitter_with_Bluetooth](http://www.polar.com/en/support/Polar_WearLink_plus_transmitter_with_Bluetooth)

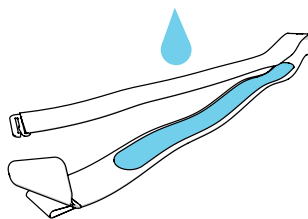
Compatible with



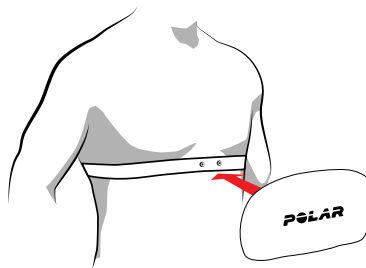
Manufactured by

Polar Electro Oy
Professorintie 5
FI-90440 KEMPELE
Tel +358 8 5202 100
Fax +358 8 5202 300
www.polar.com

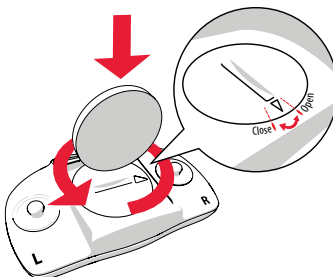
1.



2.



3.



ENGLISH

Thanks for choosing Polar! In this guide we'll walk you through the basics of using your new heart rate sensor.

You can download the full-length user manual and the latest version of this guide at polar.com/support. For more help, there are some great video tutorials at polar.com/en/polar_community/videos you may want to check out.

WEARING THE HEART RATE SENSOR

1. Moisten the electrode area of the strap (picture 1).
2. Clip the strap around your chest and adjust the strap to fit snugly.
3. Attach the connector (picture 2).



After training, detach the connector and rinse the strap under running water to keep it clean.

GETTING STARTED

You can use your heart rate sensor with many fitness apps, and it's also compatible with a number of mobile phones. Check all the compatible phones at polar.com/support.

To get started with your heart rate sensor, pair it with the app first. See the app's user guidance for more detailed instructions. If the app asks for a pin code, type 0000. You'll also find the pin code on the back of your connector.

Please note that the heart rate signal your heart rate sensor sends doesn't pass through the human body. Therefore you shouldn't keep your mobile phone in a backpack, for example, but somewhere in front of you.

CARING FOR YOUR HEART RATE SENSOR

Connector: Detach the connector from the strap after every use and wipe it dry with a soft towel. Clean with mild soap and water when needed.

Strap: Rinse under running water after every use. Wash regularly. Check the label on your strap for detailed washing instructions.

For more detailed caring instructions, see the full user manual at polar.com/support.

CHANGING THE BATTERY IS EASY

1. Using a coin, open the battery cover by turning it counterclockwise to OPEN (picture 3).
2. Insert the battery (CR2025) inside the cover with the positive (+) side against the cover. Make sure the sealing ring is in the groove to ensure water resistance.
3. Press the cover back into the connector.
4. Use the coin to turn the cover clockwise to CLOSE.

For more detailed instructions, see the full user manual at polar.com/support.



For safety reasons, please make sure you use the correct battery.

MATERIALS

Connector	Polyamide
Strap	38% Polyamide, 29% Polyurethane, 20% Elastane, 13% Polyester