



Xtreamer Prodigy 4K

USER GUIDE





The first Ultra HD media streamer & recorder!

Contents

Chapter 1: Introduction

- 7 Welcome
- 7 What can i do with Xtreamer Prodigy 4K
- 8 How does Xtreamer Prodigy 4K look
- 9 Remote control functions
- 10 HDD installation

Chapter 2: Connecting

- 12 What do i need to use Xtreamer Prodigy 4K?
- 12 Connecting the Xtreamer Prodigy 4K
- 14 First boot
- 15 Pairing Prodigy 4K Remote control with your TV

Chapter 3: Main menu & Apps tools

- 17 Main menu overview
- 17 Accessing applications
- 18 Adding/removing Apps to main menu
- 18 Download Apps
- 19 Apps tools menu
- 20 Search
- 20 Interface icons
- 21 Clean Up tool

Chapter 4: Basic Settings

- 23 Remote functions
- 24 WiFi/LAN connection
- 24 Display
- 25 Sound
- 26 Other system settings
- 27 Weather
- 27 Parental control
- 29 User interface

Chapter 5: Media Player

- 31 Explorer
- 31 Video
- 37 Music
- 37 Images

Chapter 6: KODI Media Server

- 40 Intro
- 40 What is KODI?
- 47 XBMC/KODI Add-ons

Chapter 7: Use

- 50 Streaming online media
- 51 Games
- 51 Social Media
- 52 Communications
- 52 Accessing cloud data
- 52 Google Play

53 Browser

53 Cable TV

Chapter 8: Advanced Features

57 Firmware Upgrade and Installation

60 Reset your device

61 AIRPLAY & DLNA Services

62 Clean Master

63 AirDroid

64 AirStream

65 MiraCast

67 YouTube Sync

Chapter 9: Safety

70 Safety

Chapter 10: Contact and Support

72 Contact & Support

Chapter 1

Introduction



Welcome

Welcome and congratulation on your purchase of the Xtreamer Prodigy 4K.

Before you begin using your Xtreamer Prodigy 4K, please read the Quick Installation Guide (included with your device) and this User Manual. This manual contains product introduction, basic features description, tips, cautions and other useful information, which will help you take full advantage of features in your Xtreamer Prodigy 4K.

Xtreamer Prodigy 4K is our next-generation media player and recorder as well as an all-in-one entertainment system that can also be used as a communication hub, a PC alternative and even a game console and which delivers to your TV an Ultra-HD video playback and a direct access to the best movies, TV shows and programs available on the internet.

Xtreamer Prodigy 4K features a powerful Quad Core processor and an incredible 8-Core graphic GPU enabling you for the first time ever to enjoy 4K video playback and to easily record your cable TV or any other devices connected to its HDMI IN port.

What Can I do With Xtreamer Prodigy 4K?

While you are probably used to having Android OS on your mobile device, its features can enrich your home experience as well giving you an opportunity to access an amazing variety of features in your living room.

Xtreamer Prodigy 4K can be used as:

- Multimedia player
- Internet TV
- Social Networks Portal
- Work Station (with mouse and keyboard connected)
- Internet Browser
- On-Line Shopping and Banking Portal
- Communication Hub (Messenger and chat applications)
- Out-Of-The-Office Android PC (E-mails, Office programs)
- Game Console

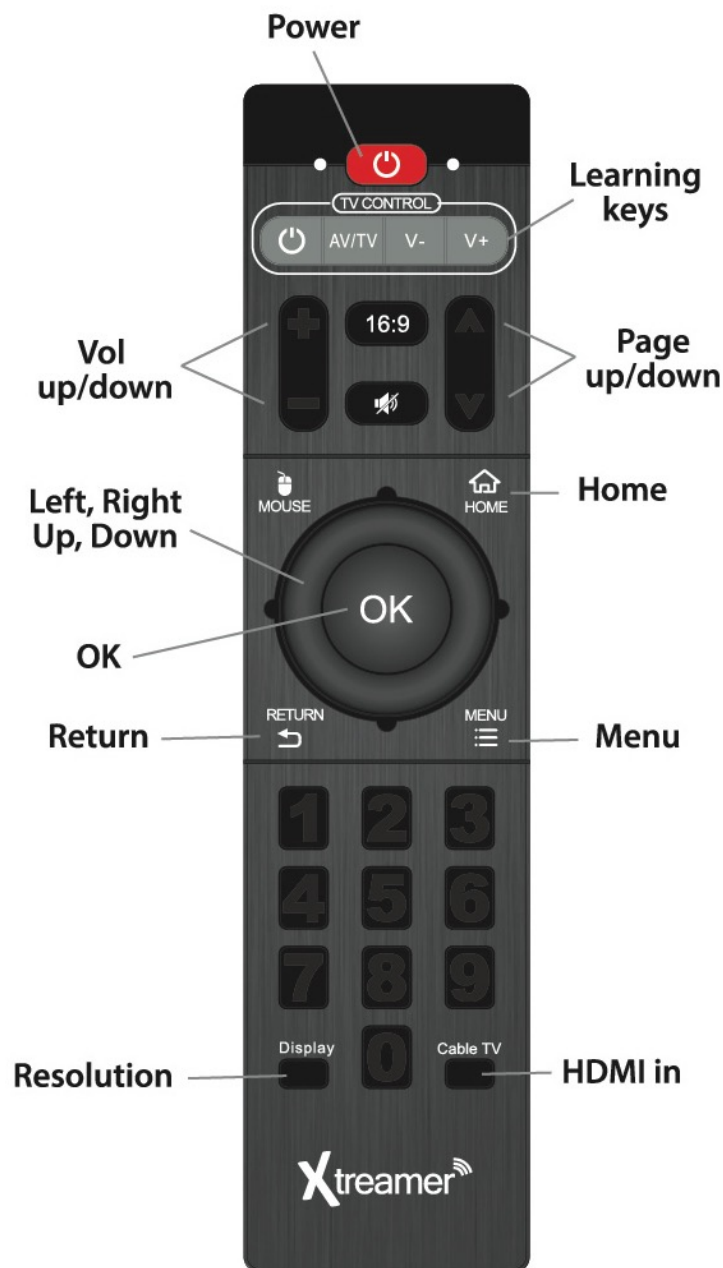
And much more...

Please note that the company will not be responsible for loss of or damage to your personal data as well as any other consequential loss as a result of the improper use of the product's hardware or software, or caused by the product repair or any other unexpected incidents. We shall not be responsible for any loss resulting from misunderstanding this manual and we shall not be liable to third party for any loss or damage connected with using this product.

How does Xtreamer Prodigy 4K look



Remote control functions

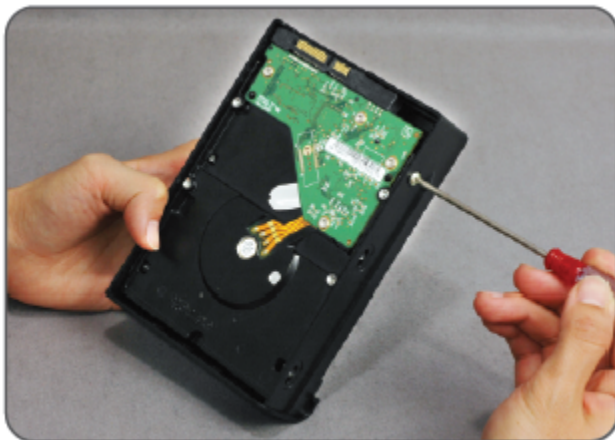


Toggling Mouse function is useful for those Android apps which cannot be controlled by a regular remote. Click on the MOUSE button and use directional keys and OK button to control your device.

You can also use alternative controllers such as Air-Mouse, Mini-Keyboard and wired peripherals.

HDD installation

Please note: Connect your hard drive to a PC and format it NTFS before installing the HDD.



Chapter 2

Connecting



What do i need to use Xtreamer Prodigy 4k?

In order to start using the Xstreamer Prodigy 4K you need:

High-definition TV

- A high-definition TV capable of displaying 720p or 1080p video.

Cables

- An HDMI cable to connect Xstreamer Prodigy 4K to your TV.
- An optical audio cable (optional) to connect to an amplifier or a receiver.

Network

- A Wi-Fi wireless network (wireless video streaming requires 802.11a, g, or n), or Ethernet (wired) network connection.
- A broadband Internet connection.

Software and accounts

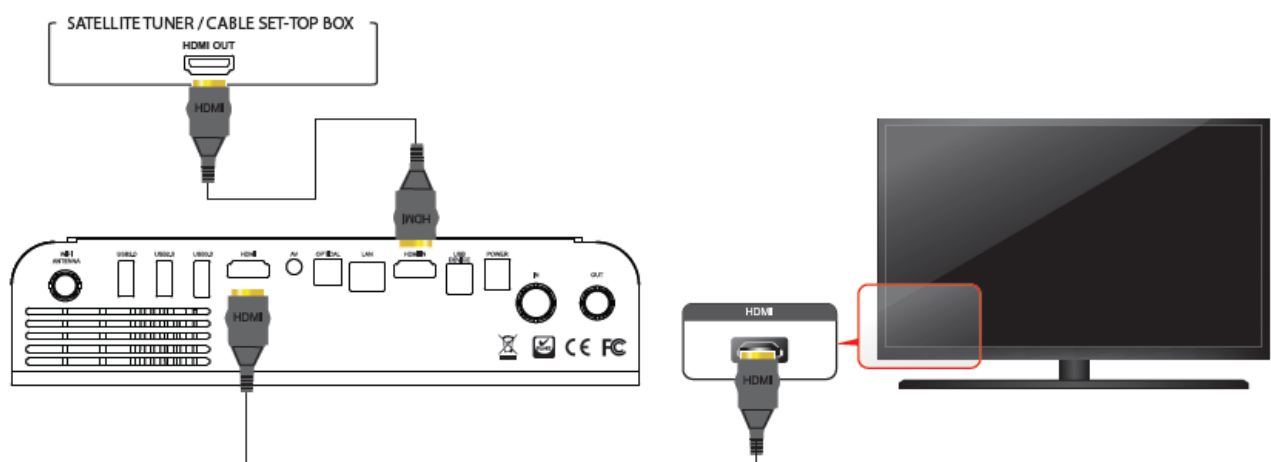
- No additional software is required for you to use Xstreamer Prodigy 4K.
- Gmail (Google) account is required in order to use the full functionality of your Xstreamer Prodigy 4K and access Google Play Store.

Please note that some online services (such as Netflix, Hulu etc) require a separate account and, in some cases, a subscription.

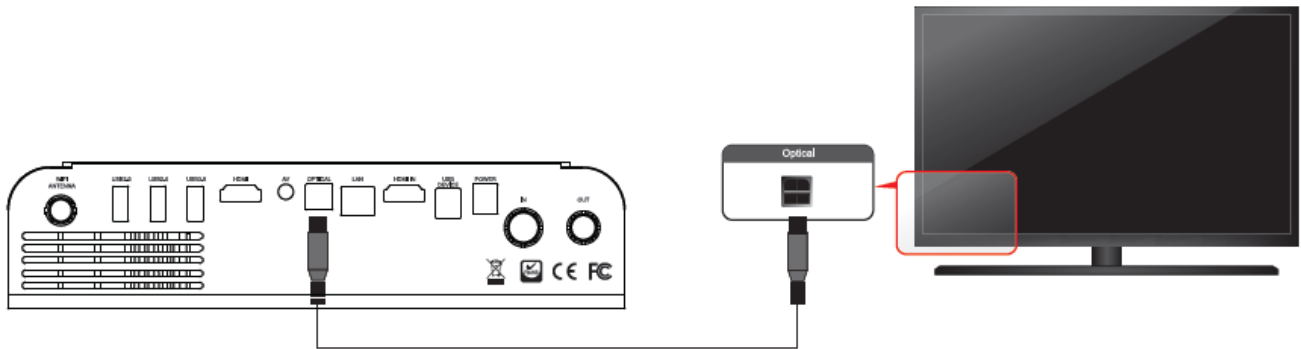
Note: You can access and control your device remotely using AirDroid or any similar application.

Connecting the Xstreamer Prodigy 4K

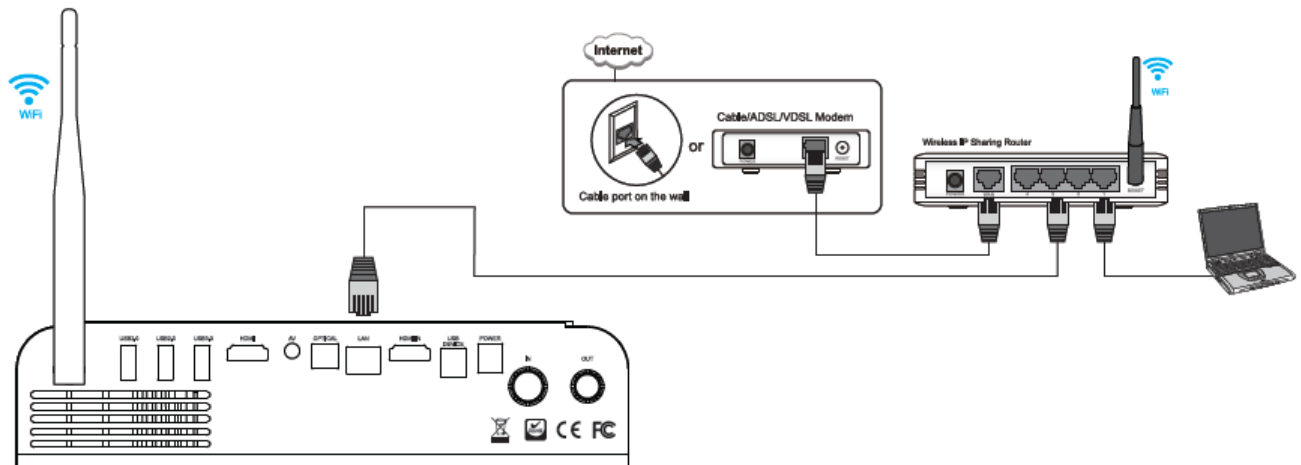
HDMI connection



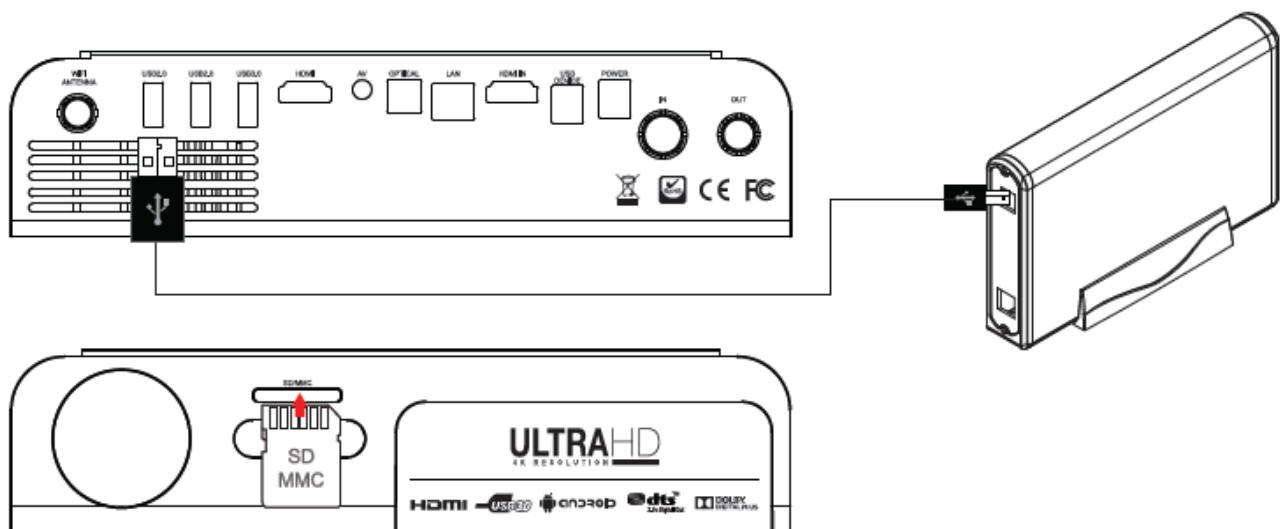
Optical connection



Network



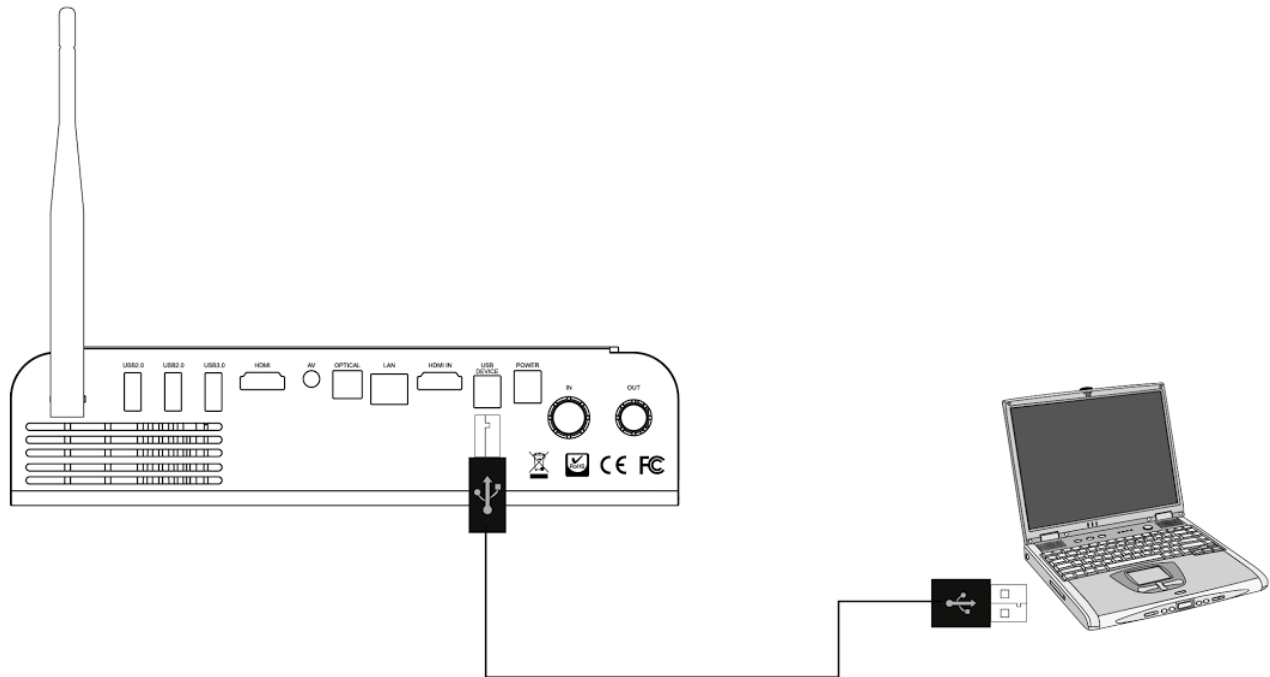
Connecting an external USB drive



Connect your Xstreamer Prodigy 4K to a PC

You can connect your Prodigy 4K to a Windows PC using a slave USB connection. Simply connect the cable; switch the device on and your PC will mount it as an external storage device. This is useful for transferring large amounts of data on your internal HDD.

Note: only works if you have an internal hard drive installed





First boot

Connect the power cord to your Xstreamer Prodigy 4K and the other end to a power outlet. Turn on your TV and make a selection from the input type settings – these will depend on your TV.

Pair Prodigy 4K Remote control to your TV

Xtreamer Prodigy 4K remote control can replace your TV or Cable SetopBox remote with a simple pairing steps. Here's how you can pair the remote to your TV:

1. Place your TV remote control or whatever else remote you want to pair with your xtreamer next to your Prodigy 4K remote control – Make sure that IR sensors are facing one another.
2. At the top of the Xtreamer remote control you will see several keys. Press and hold the POWER button  in the "TV control" section for about 5 seconds until the red LED starts flashing fast.
3. Now its time to designate a key on the Xtreamer remote to learn the function of the TV/Cable box remote. To do that click on a key in the "TV control" section  that you want to pair with a TV remote's button – red LED will start blinking slowly.
4. Click on a button on your TV remote control that you want to pair. We recommend pairing the ON/Off and Volume keys.
5. If the pairing is successful the LED will blink 3 times.
6. Repeat the steps above for each key.

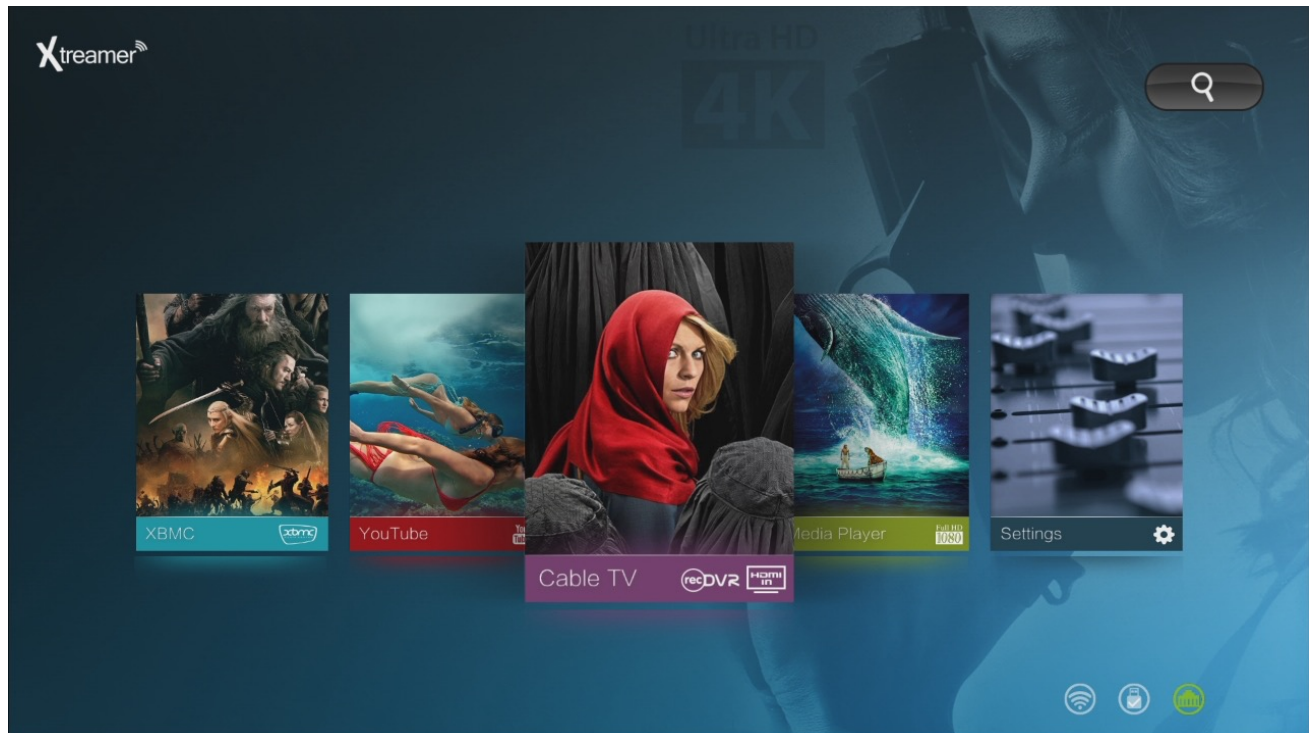


Chapter 3

Main menu & Apps tools

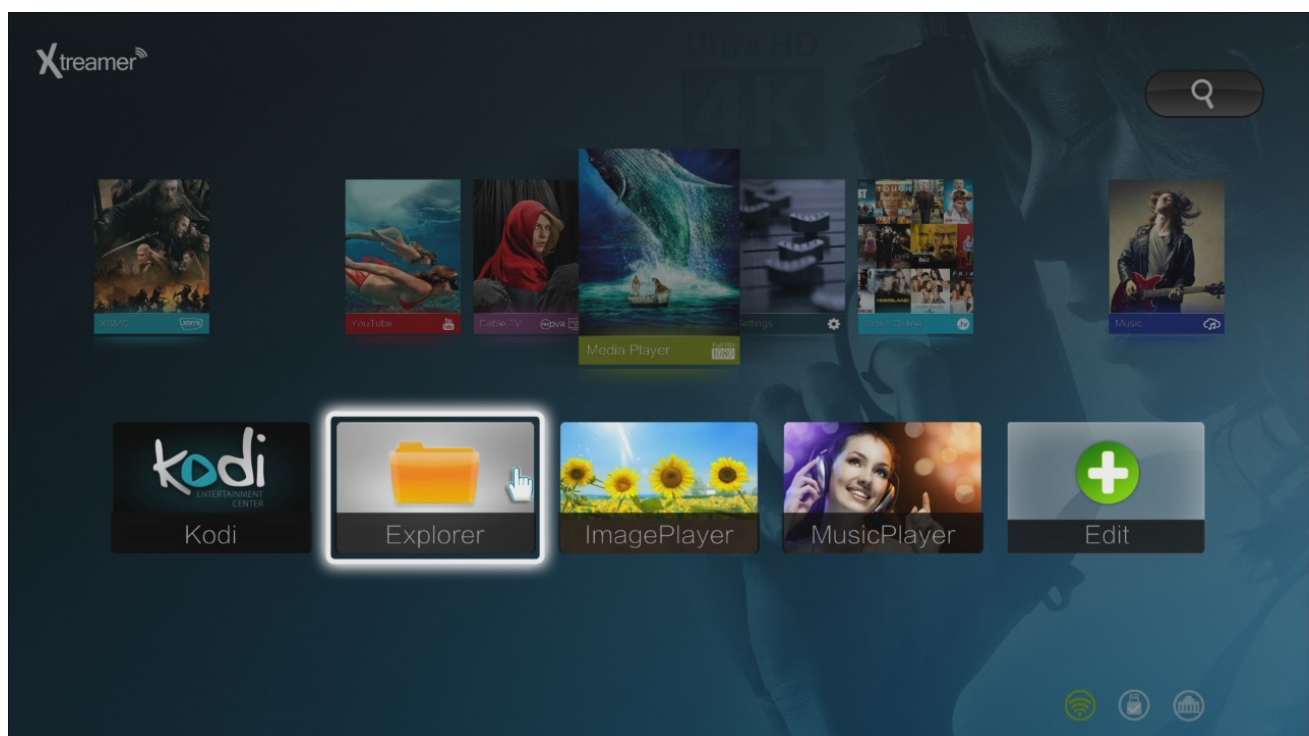


Main menu overview



The Xtreamer Prodigy 4K Interface is comprised from several tabs, split into categories such as Media Player, Online TV etc. Some of the tabs open a single application (for example YouTube or XBMC), others – give you a list of various apps.

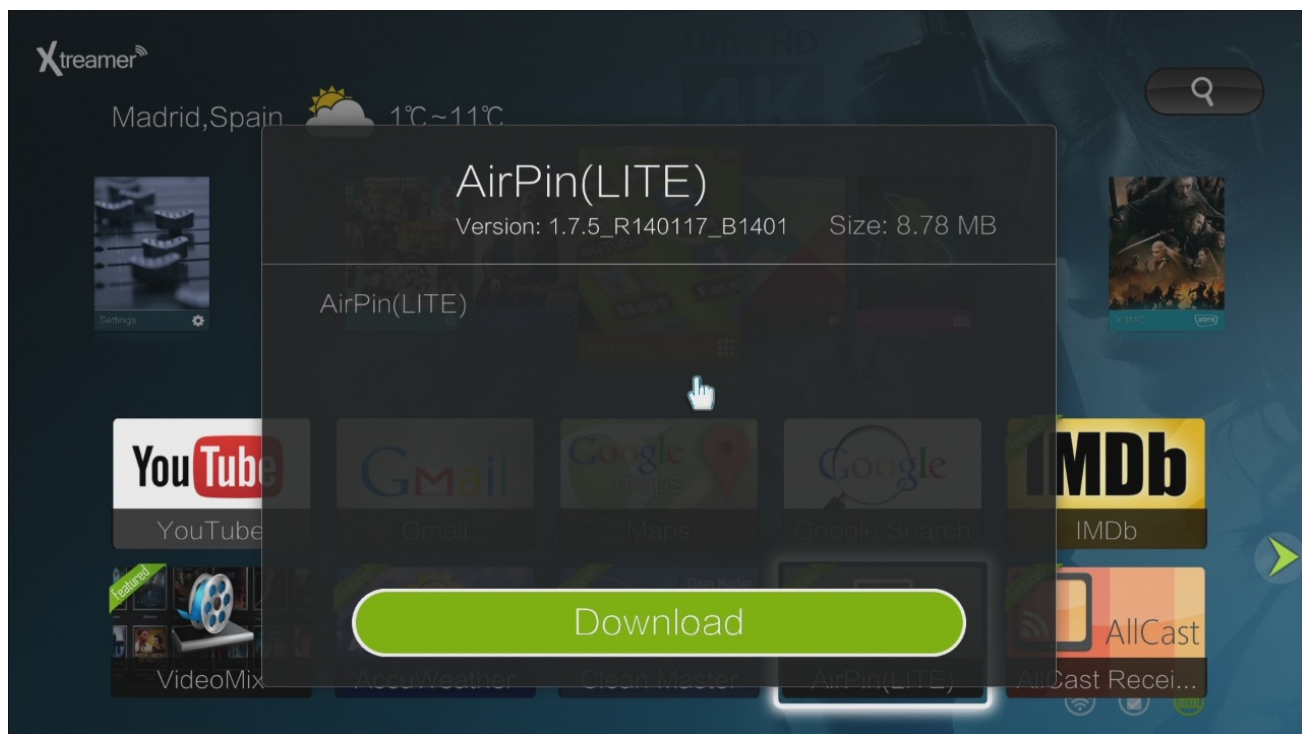
Remote functions: Use directional keys to navigate the main menu and OK to make a selection



Please note that these tabs are opened to customization - click on the **EDIT (+)** icon to add \remove apps.



If a main menu application requires to be downloaded, simply click on it and confirm that you want the system to download and install it.

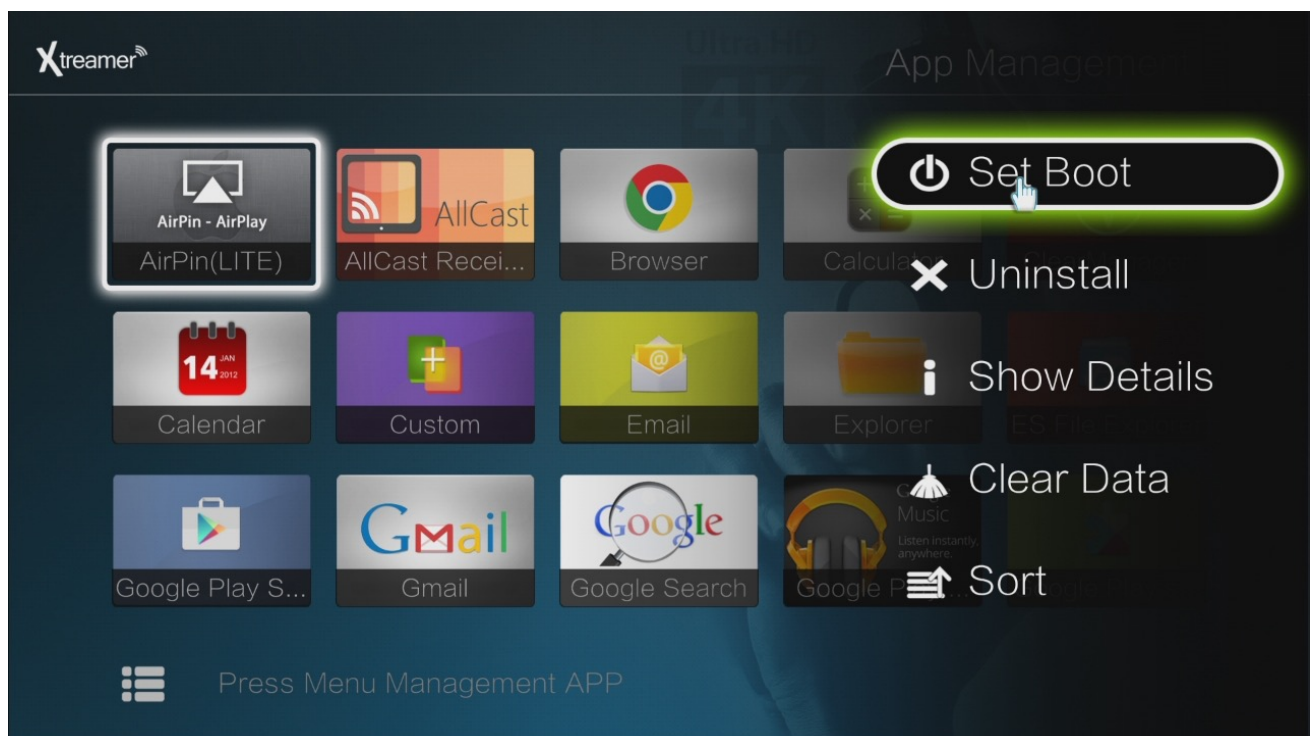


The full list of applications is available from the **App Manager** tab.



The APP MANAGER gives you the full control over the applications installed on your Prodigy 4K.

Press the **MENU** key to toggle a list of available options

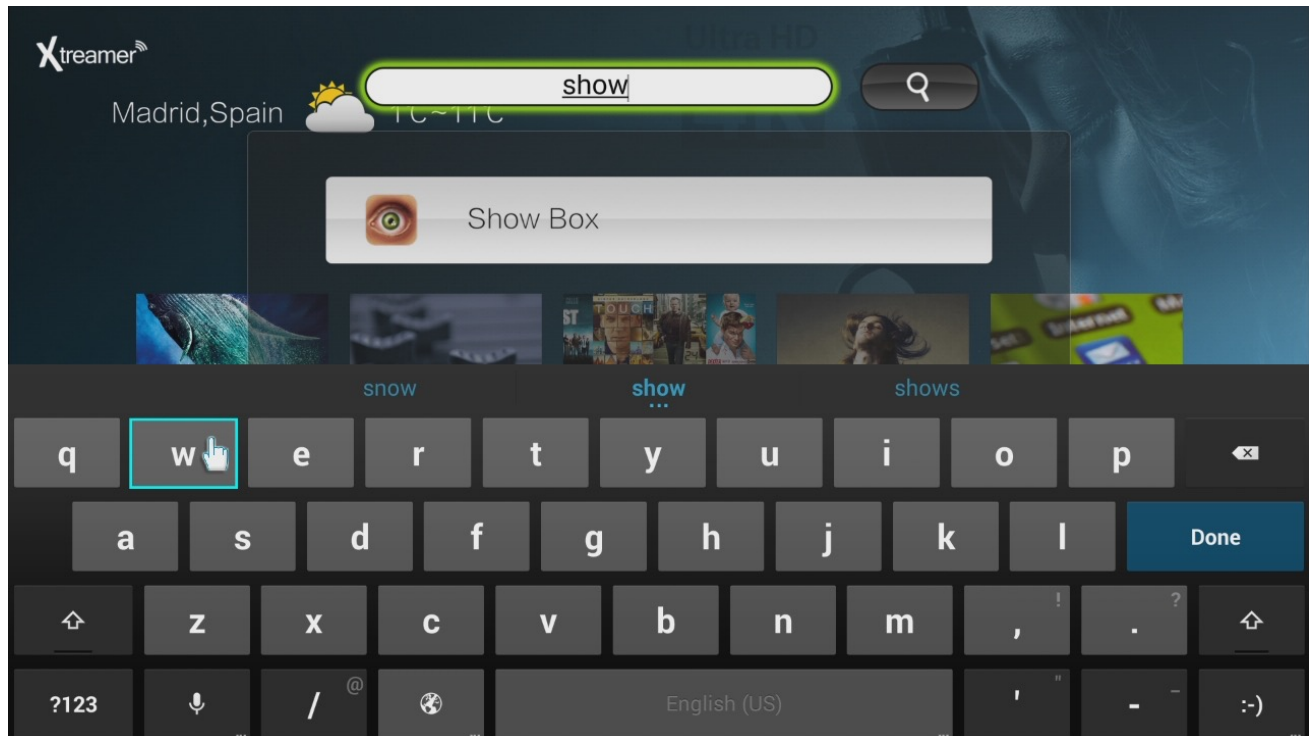


Note: Set Boot is a unique function allowing you to specify an application which will start automatically once the device boots.

Another way to access and control your applications is via SETTINGS -> SYSTEM -> APPS
There you can disable notifications, clear data, move applications from internal storage etc.

SEARCH

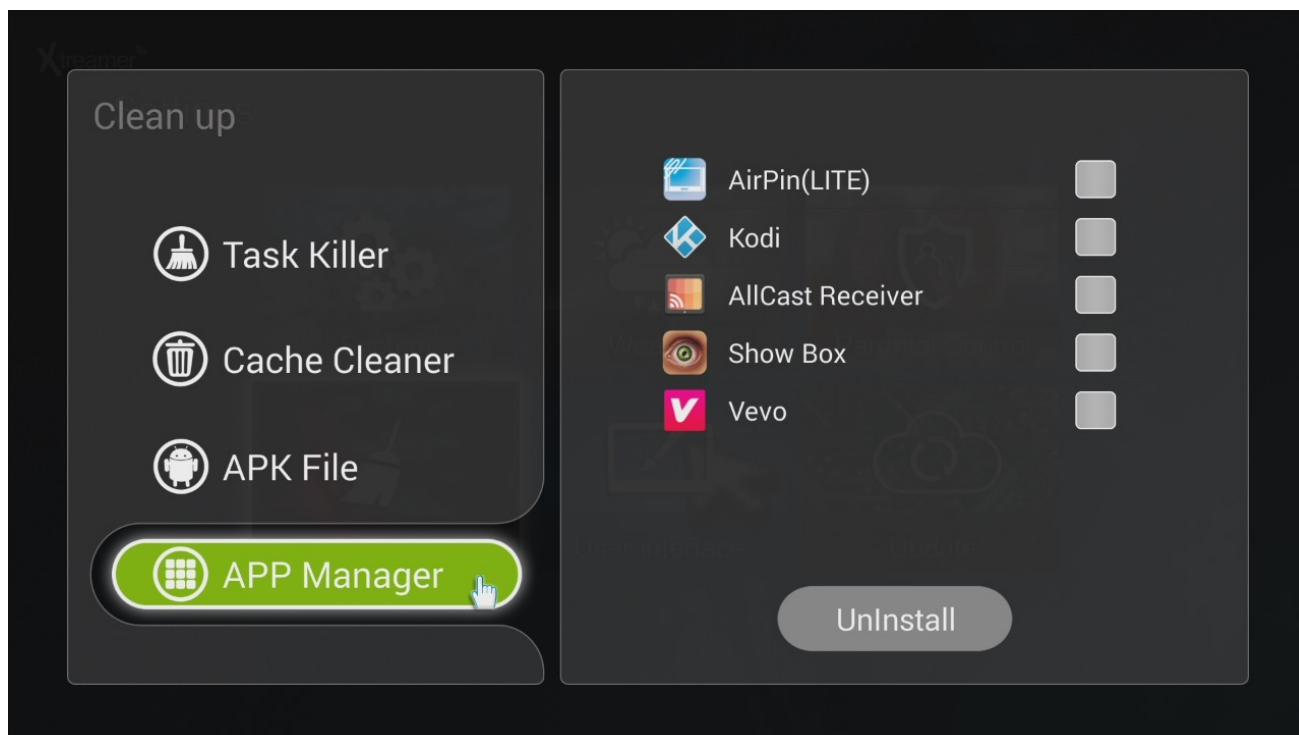
Use Search on the Main Menu screen for the fast access to any installed application.



The icons in the bottom right corner of the main screen indicate Wi-Fi connection, presence of a USB/Internal storage and LAN.



Please note: as on any Android device it is advisable to clean its memory once in a while to get rid of the apps you are not using. To do so navigate to SETTINGS -> **CLEAN UP**. Use TASK KILLER to stop the apps you are not using at the moment.



If you are unfamiliar with Android OS it would be advisable to invest some time into getting to know it.

The [Xtreamer Mobile knowledge base](#) has quite a bit of information on the operating system. Google also maintains a multilingual help page dedicated to Android.

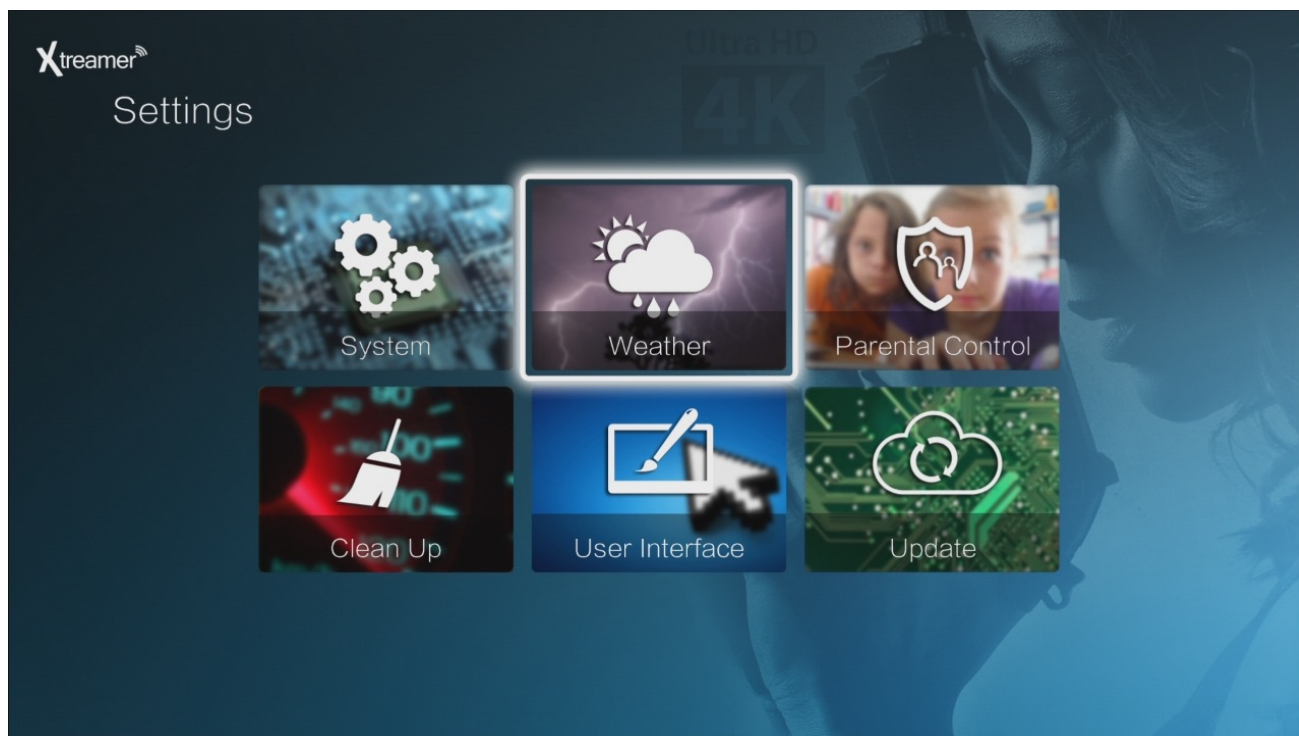
Chapter 4

Basic Settings

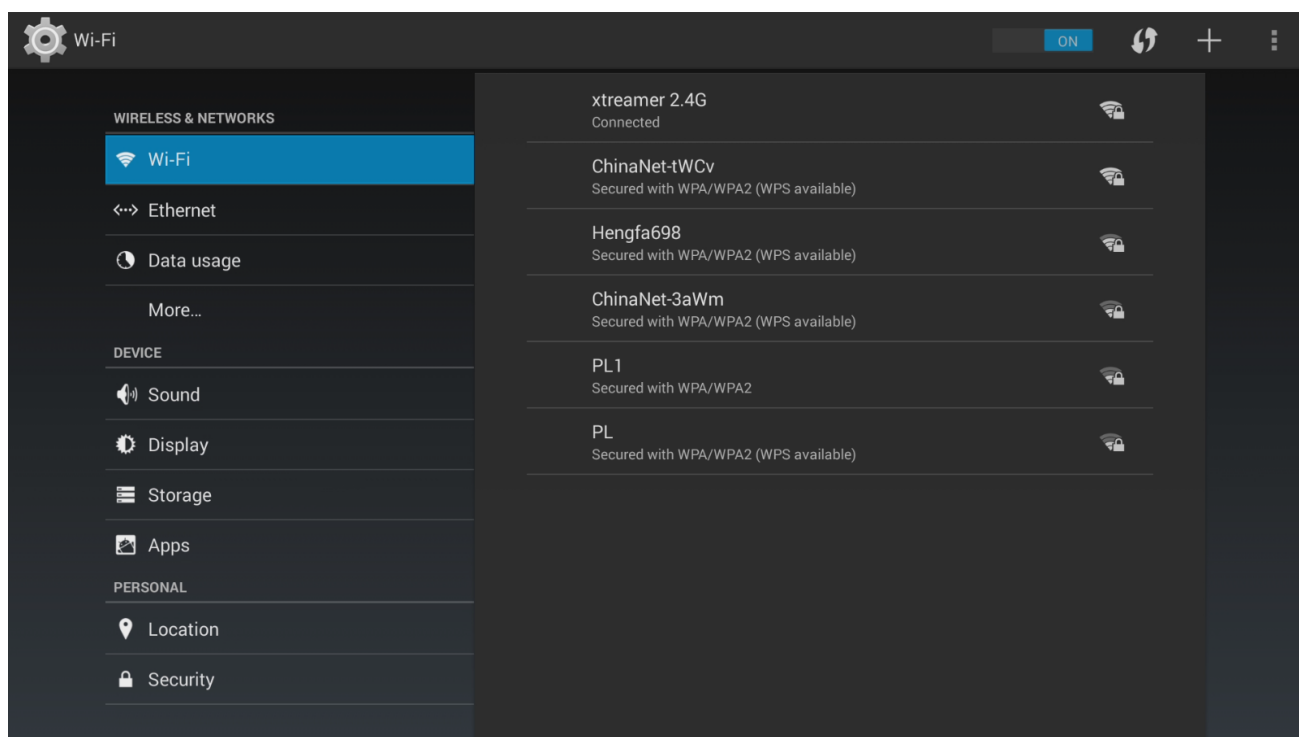


Remote Functions: Directional Keys to navigate and OK to make a selection. Return to go back to the previous screen.

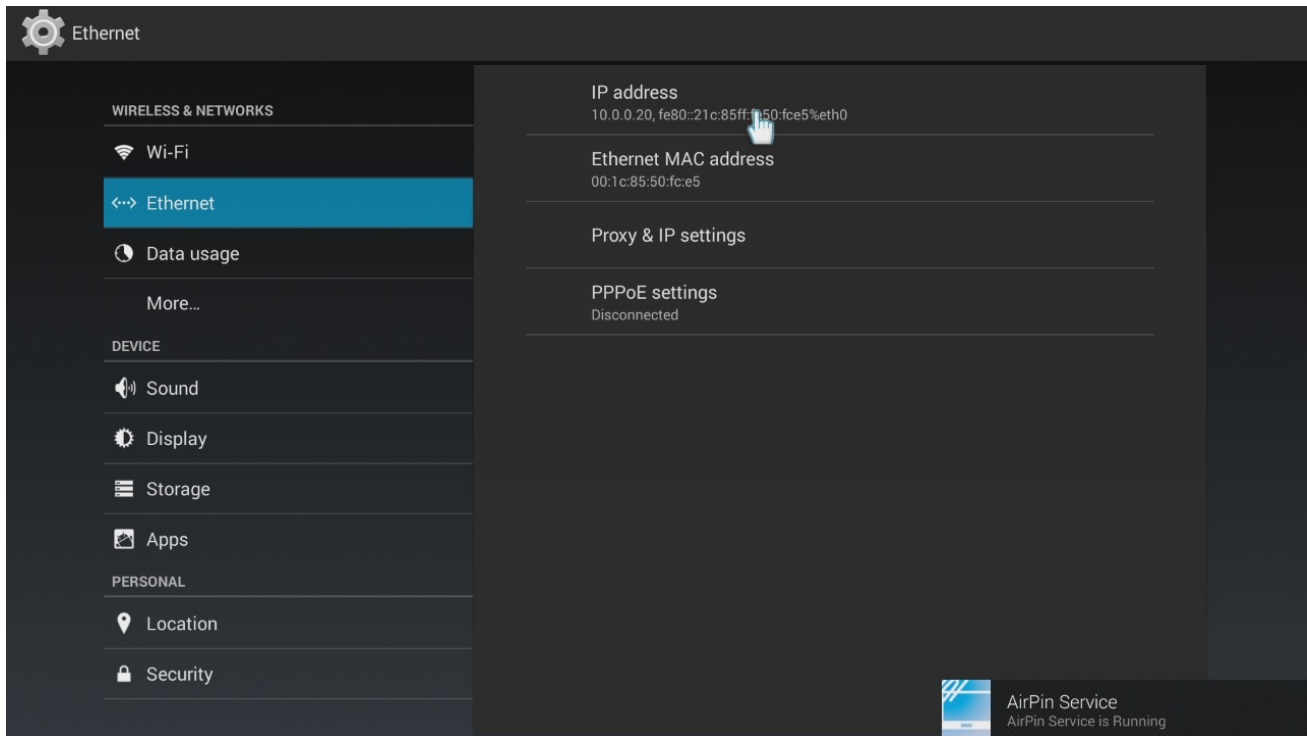
First thing to do once you start your device and familiarize yourself with the main menu would be to connect your Xtreamer to the home network.



Please navigate to SETTINGS -> **SYSTEM** which opens Android System Settings panel. Go to Wi-Fi or Ethernet tabs depending on your setup. You need to switch ON the Wireless connection on your Prodigy in order to use it.



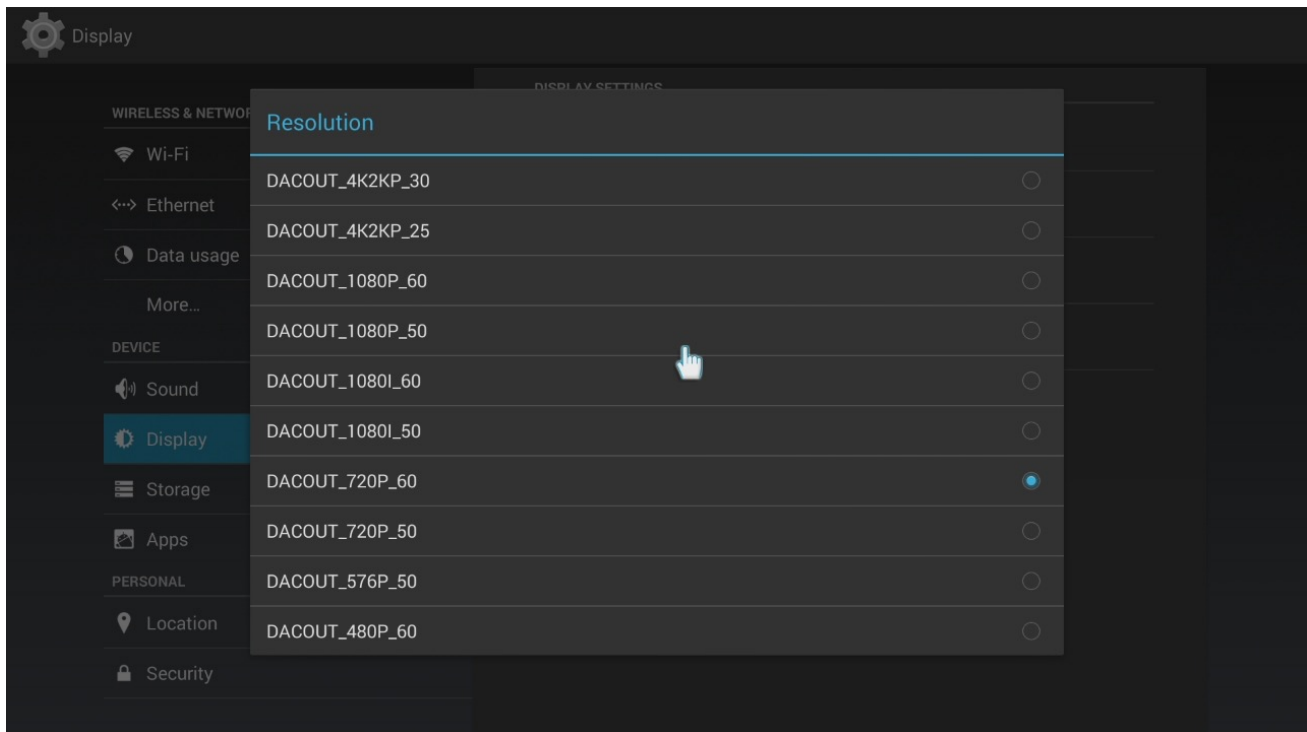
Choose the network type (Wi-Fi or Wired LAN) and set it up



Please note: the operating system will not be able to detect a hidden SSID

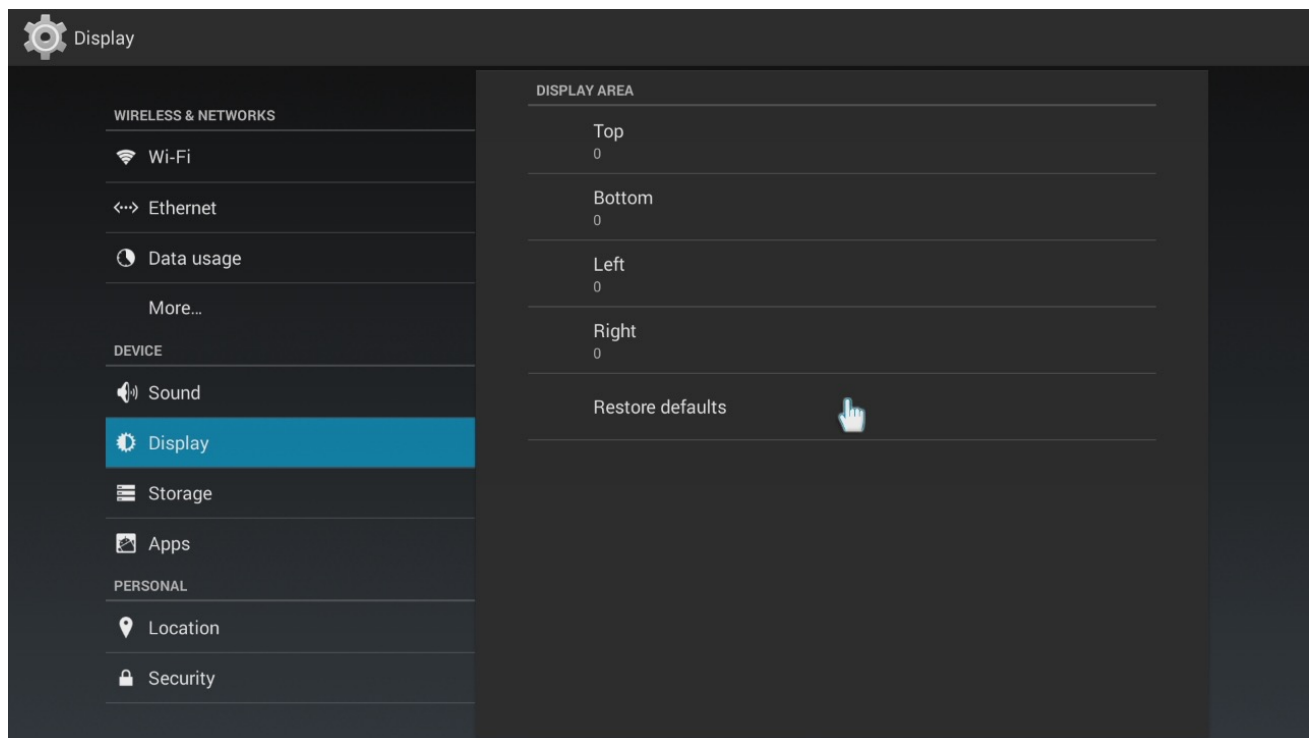
DISPLAY

Resolution



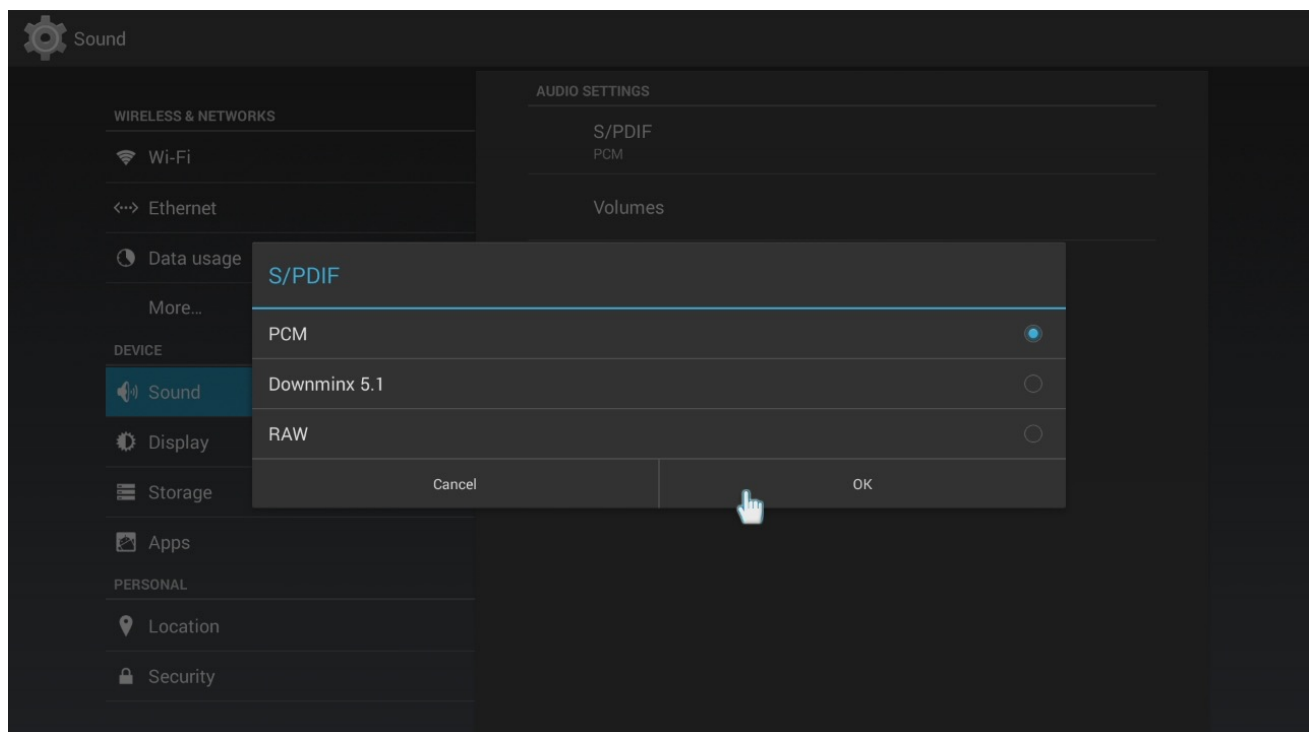
Please note: You can use the DISPLAY button on your remote to quickly change the resolution.

Adjust the screen size using DISPLAY AREA setting if the image does not fit your TV screen.



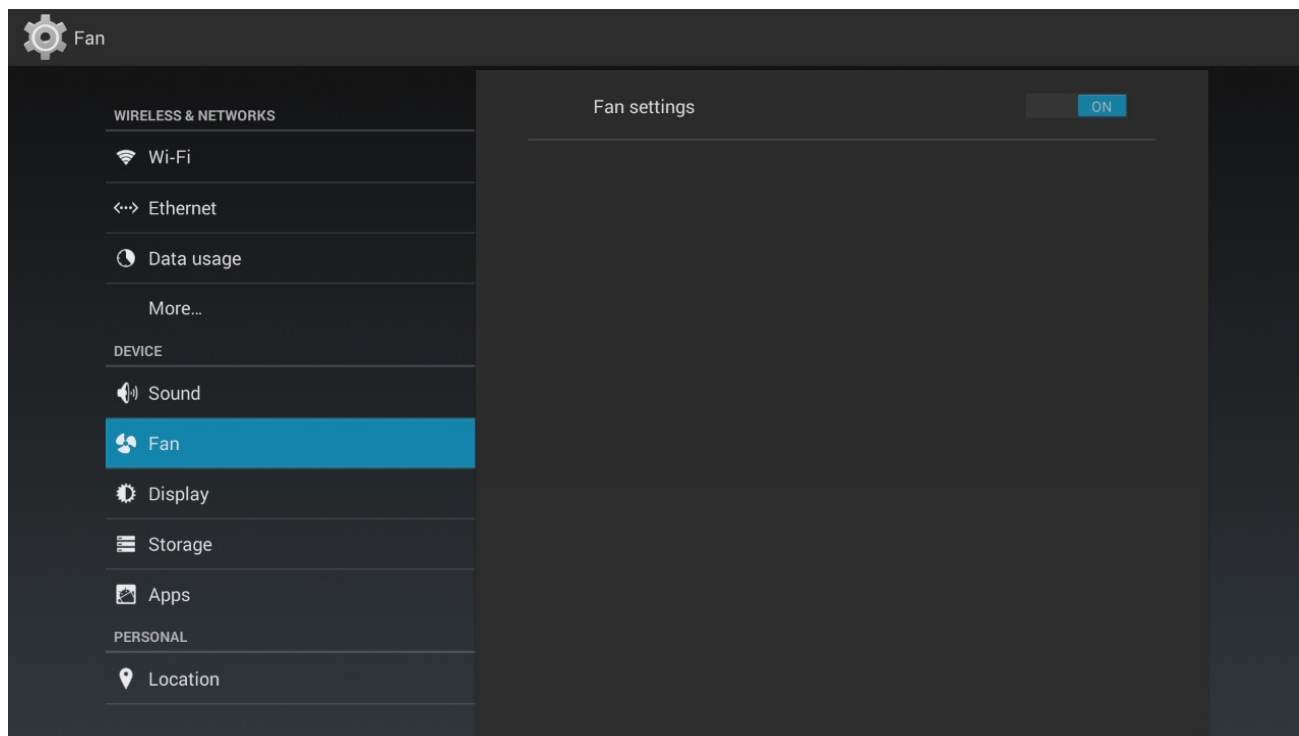
SOUND

Navigate to the SOUND section to set the audio output depending on your setup.

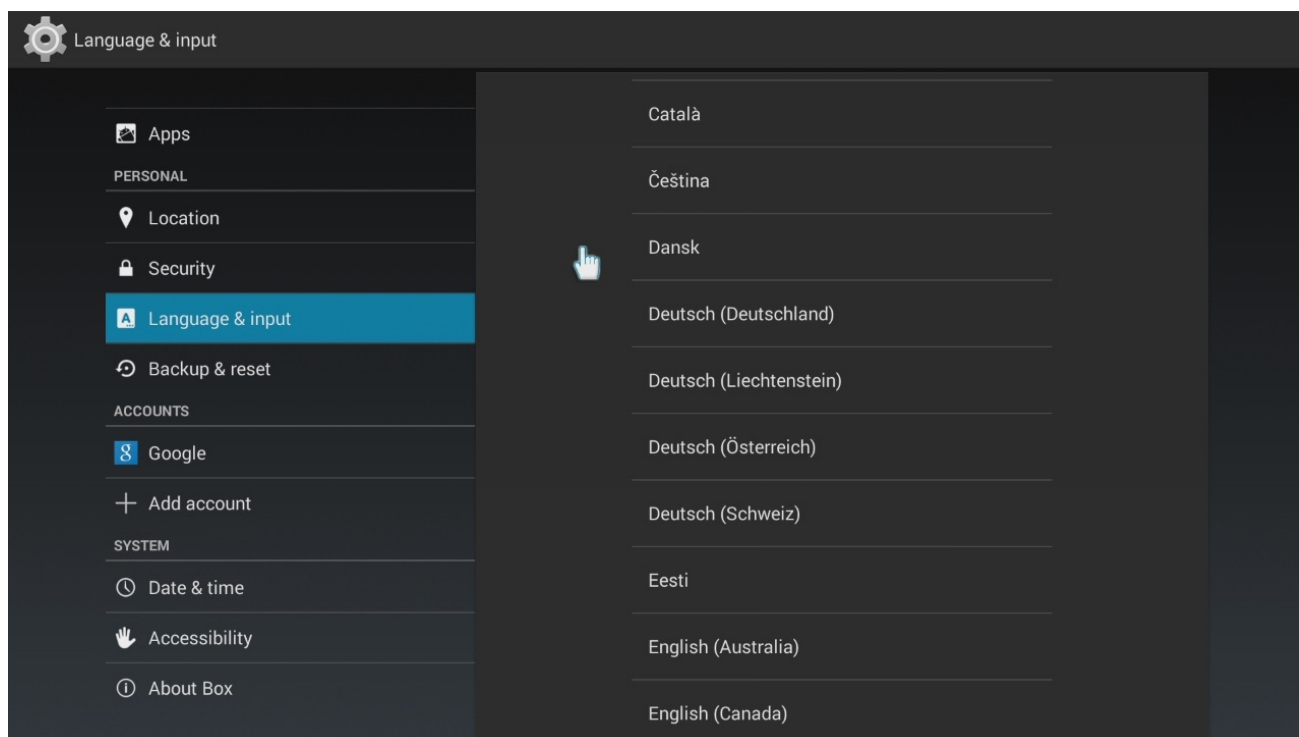


Other System Settings

FAN – you can switch the onboard fan off if you want to. **Please note** that if you have an HDD installed and you use it to stream HD video files it's advisable to keep the Fan working.



TIME & DATE – this is an important setting. Unless you set it correctly your Google Services will not work. By adjusting the **LANGUAGE & INPUT** settings you can add additional layouts to the virtual keyboard allowing you to type and search using different languages.



Within the DISPLAY tab you have an option to enable screen-mirroring (screen-casting) using Miracast.

Other options can be used to better customize our device to perfectly suit your needs.

WEATHER

The Weather Widget on your might not be important but it's a nice little utility that you can setup from SETTINGS -> WEATHER

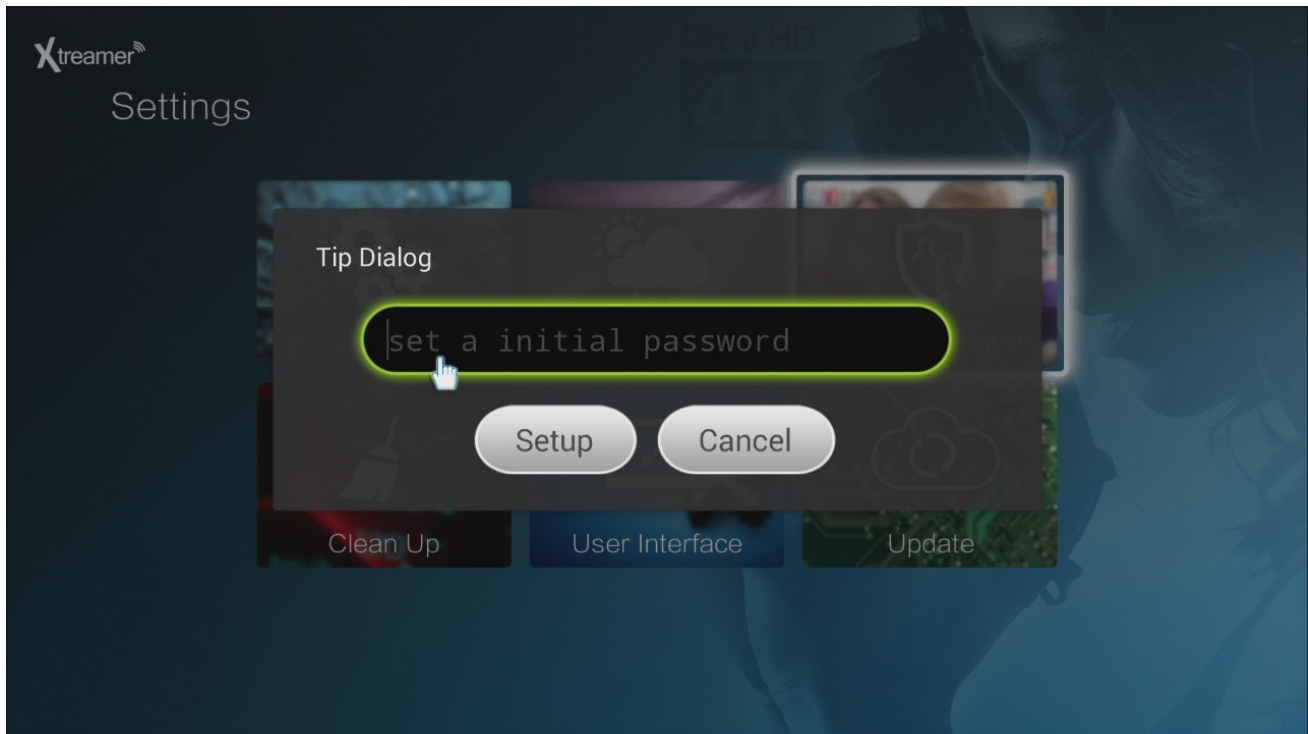
Simply set your location and – once your device is connected to a network – you will always know what the weather is like.



PARENTAL CONTROL

If you don't want your kids to have access to certain apps and services, the Parental Control feature is a must.

Choose the password.



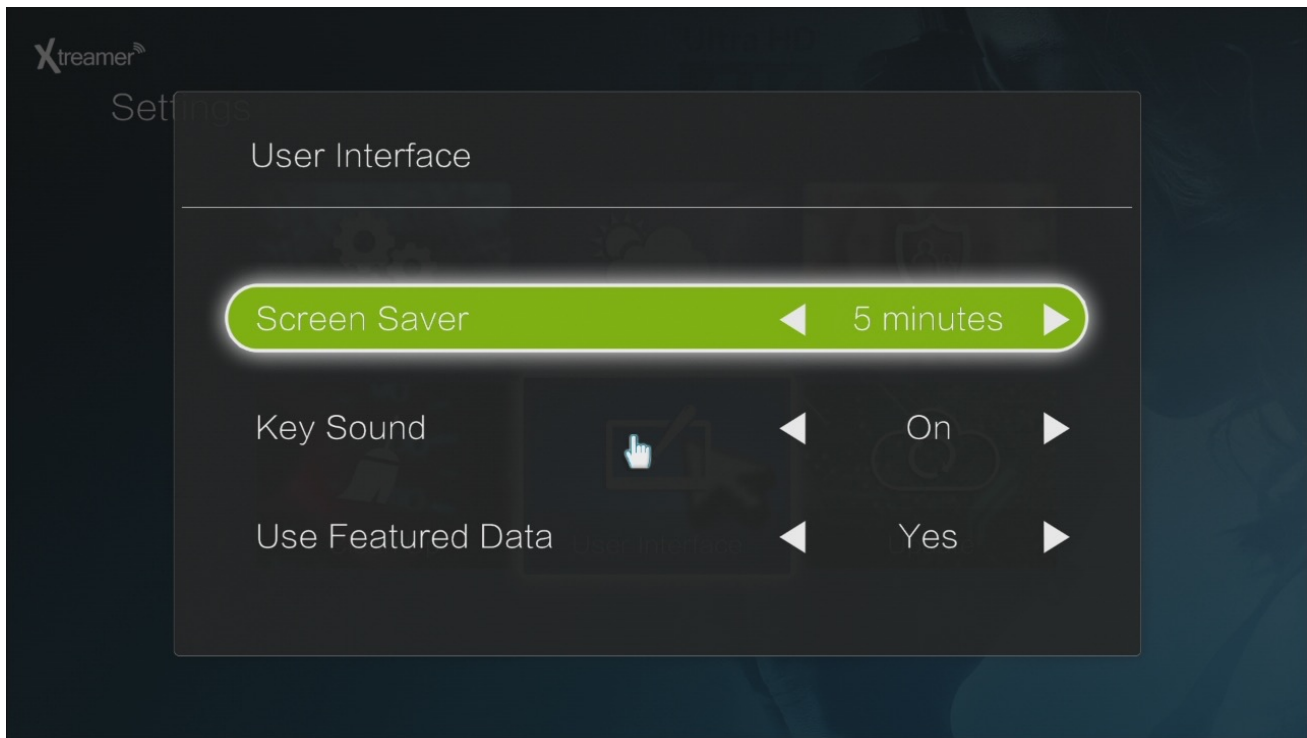
Then choose applications which you want to be password-locked.



Now you don't need to be worried about your kids accessing something inappropriate.

USER INTERFACE

Settings -> User Interface is used to adjust your personal experience on Xtreamer Prodigy 4K



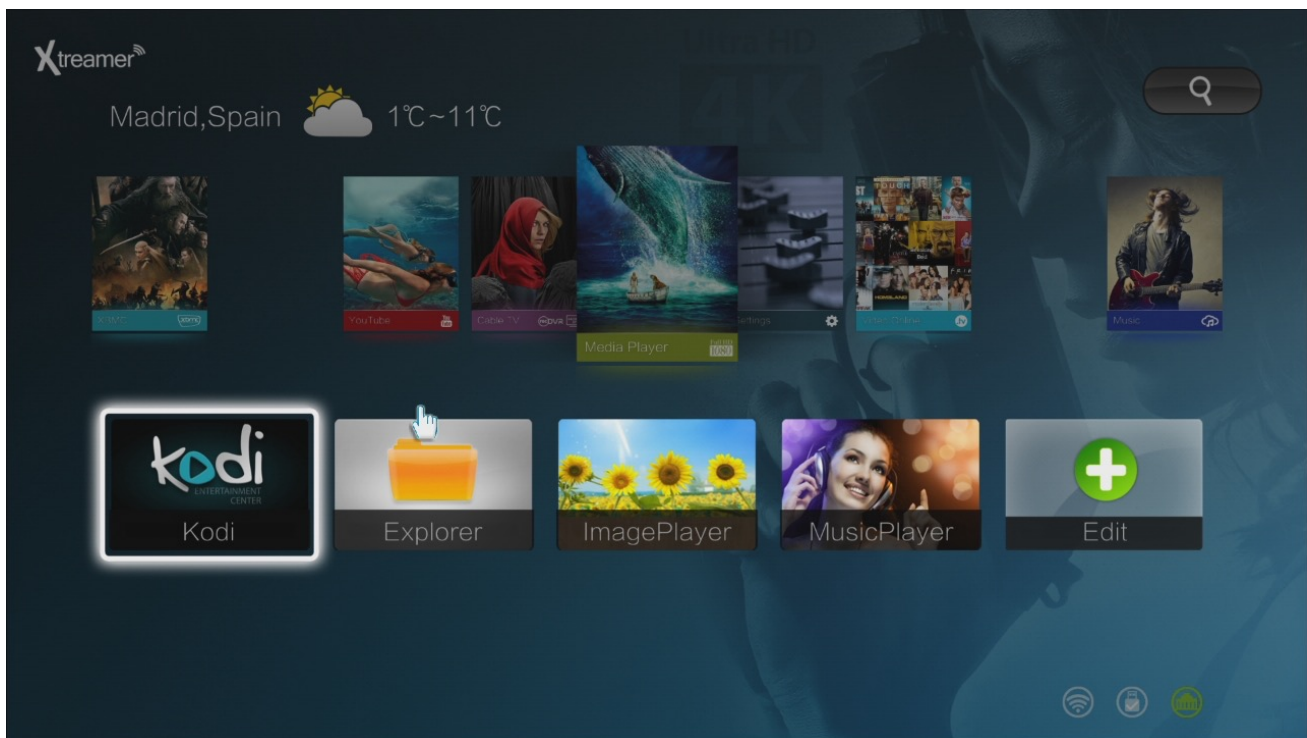
Chapter 5

Media Player



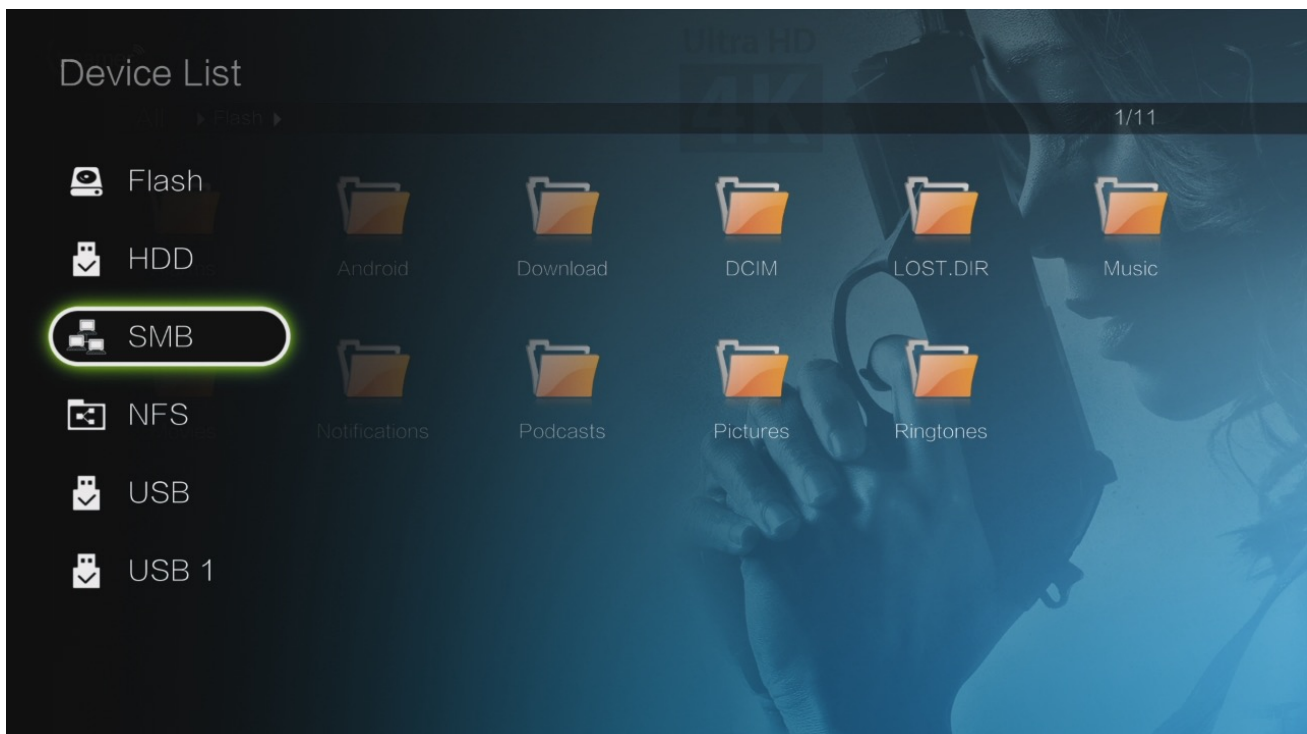
VIDEO

We chose the classic Xtreamer look for our Media Player section.

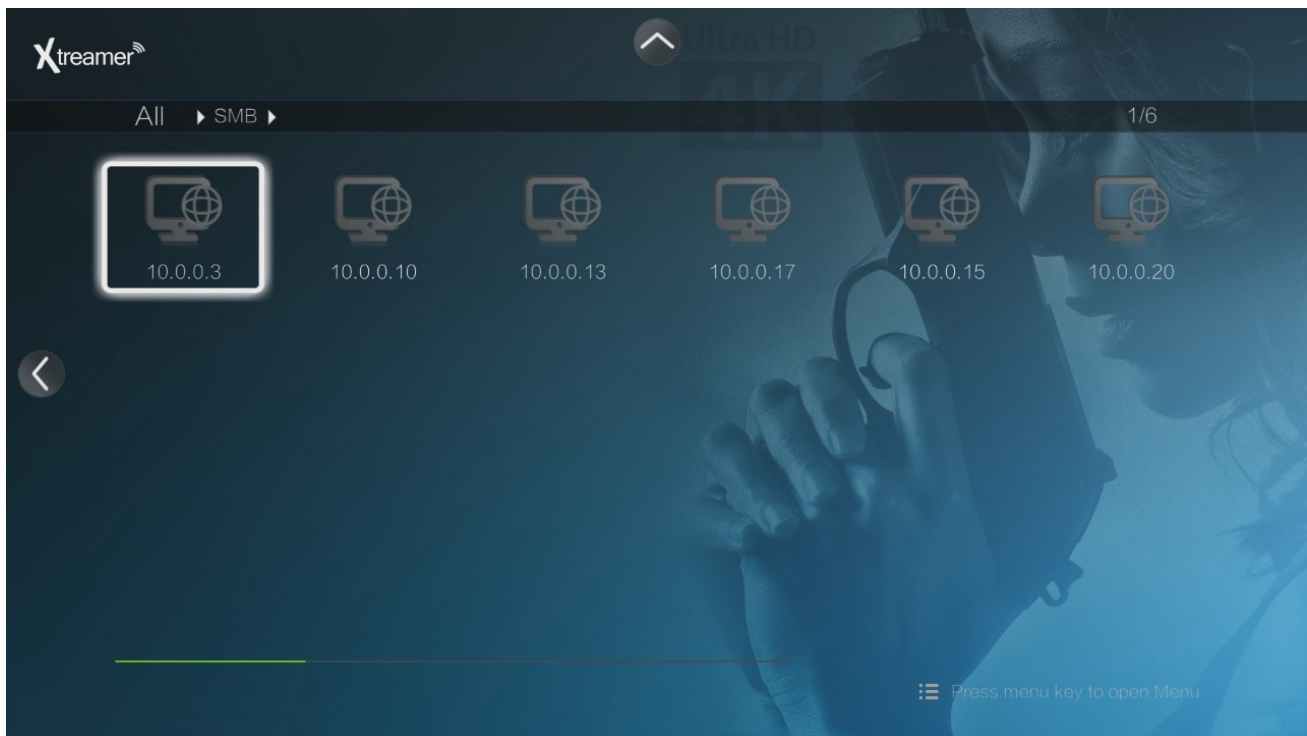


Go to **Explorer** to access your multimedia file and play them using the stock applications.

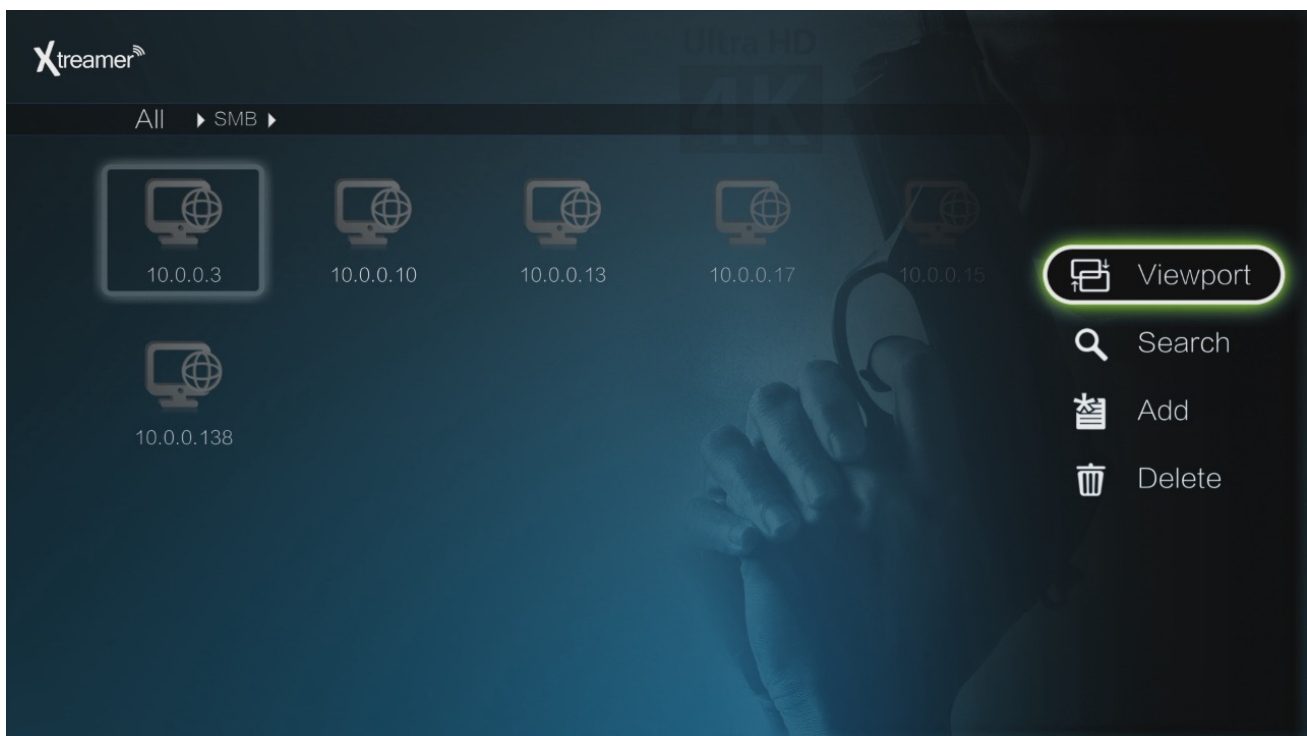
Press LEFT cursor button to access all the available storage devices:

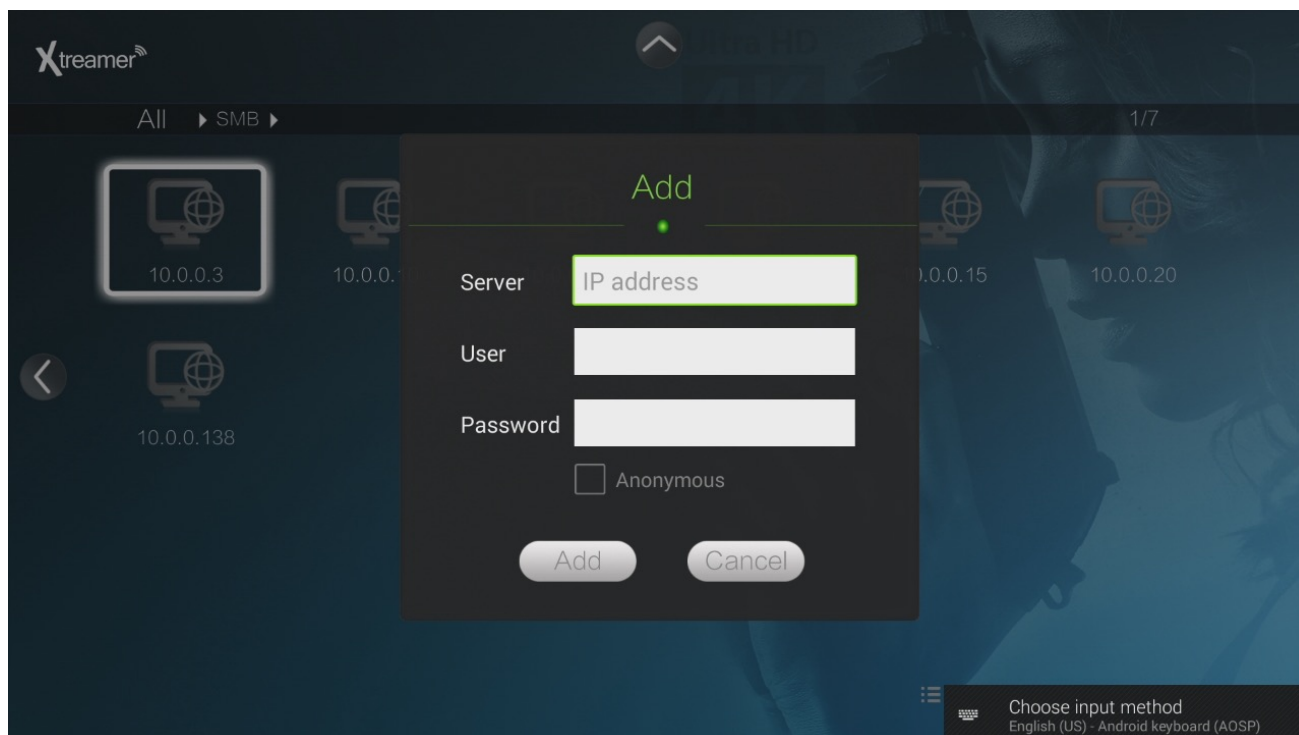


Please note: in order to access your network shares you need to configure them correctly.
For details please refer to [THIS GUIDE](#)



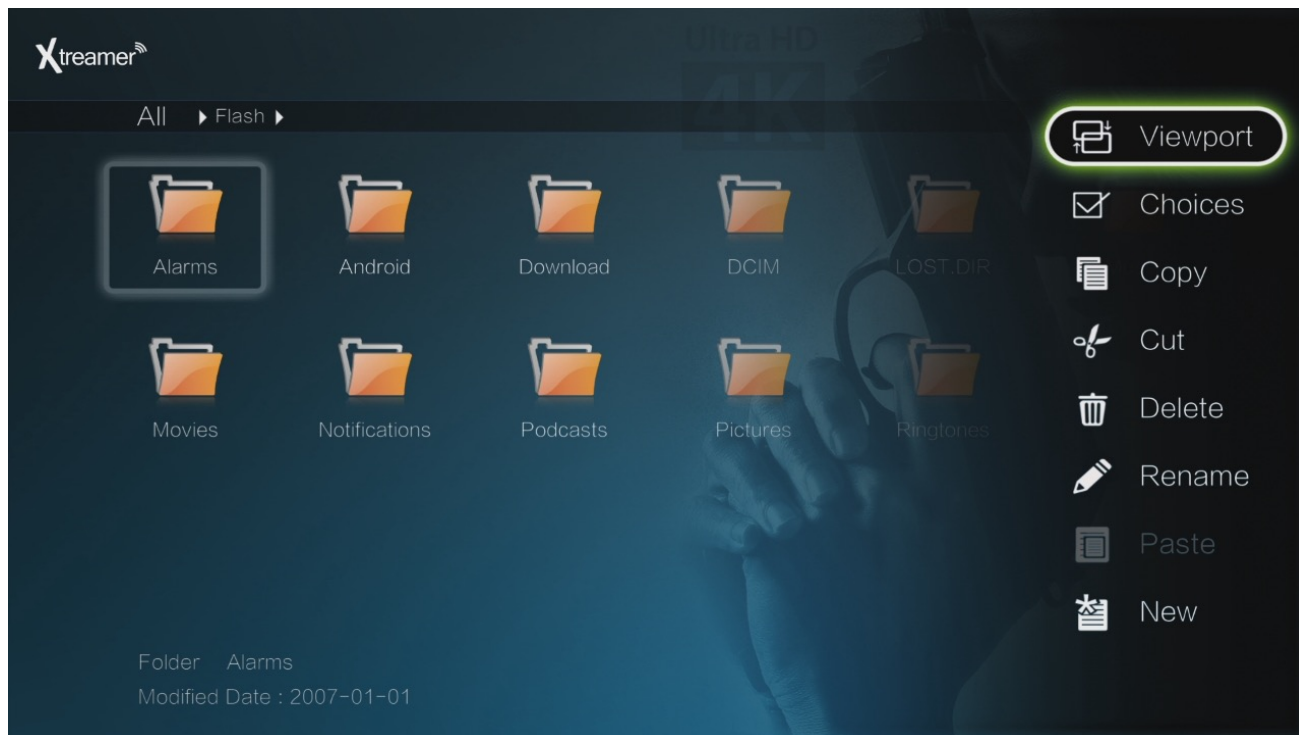
Press MENU button if you want to add an SMB (Windows) share manually

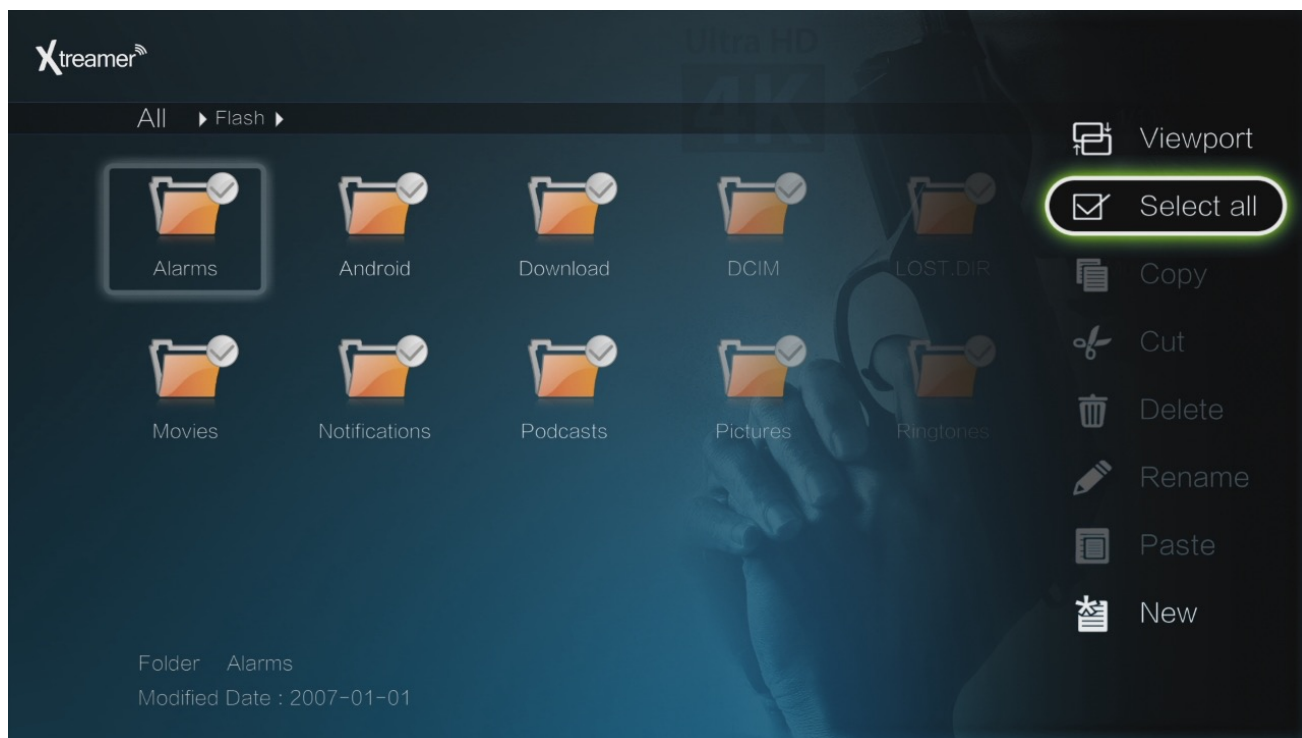
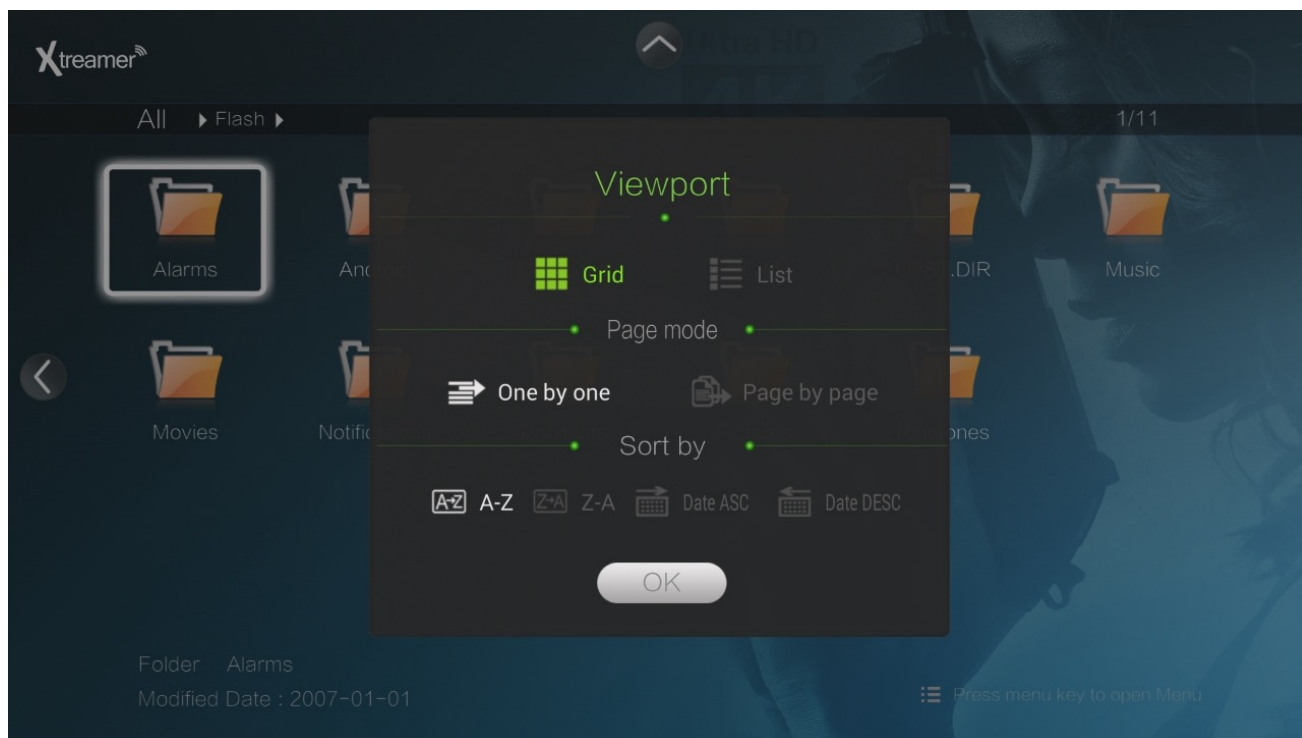




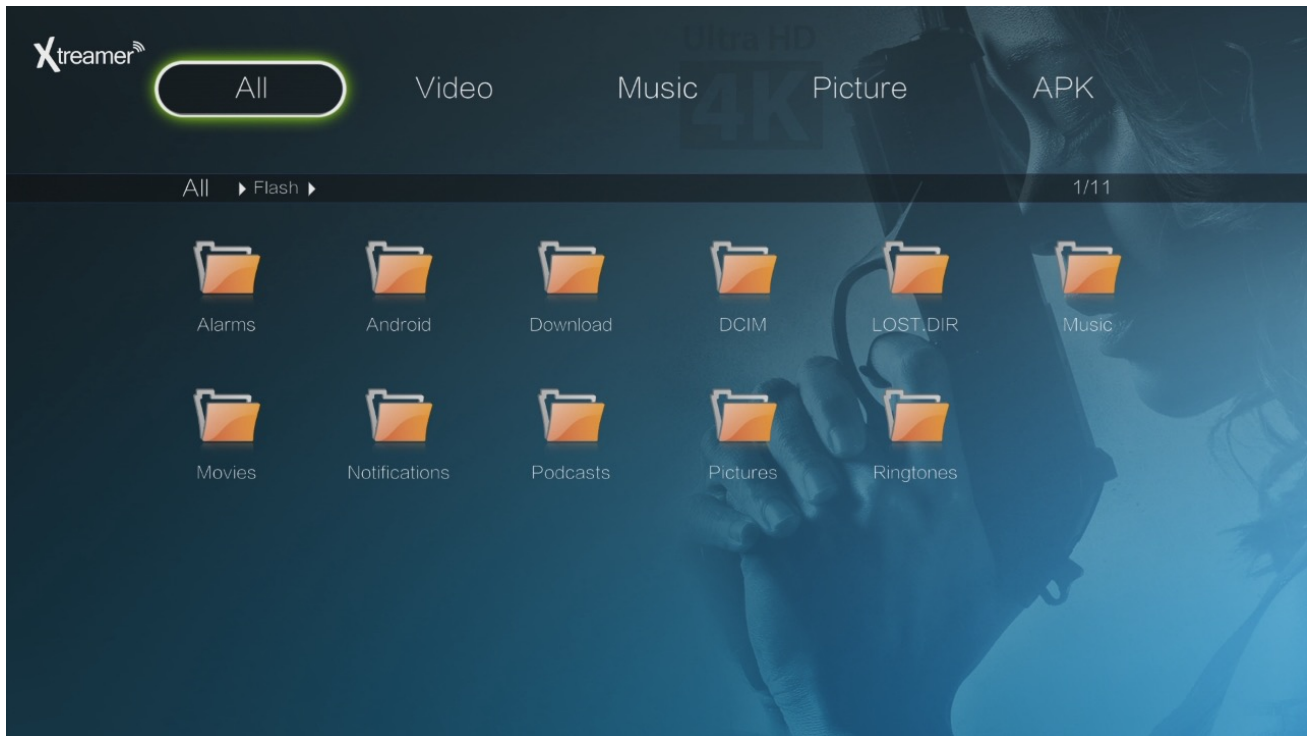
The File Manager has all the functions of the classic Xtreamer UI.

Remote Functions: Directional Keys to navigate, OK to make a selection. Press MENU button for additional options





Press UP directional key for viewing options:



Navigate to a folder with your videos and press OK on a selected file to start the playback.

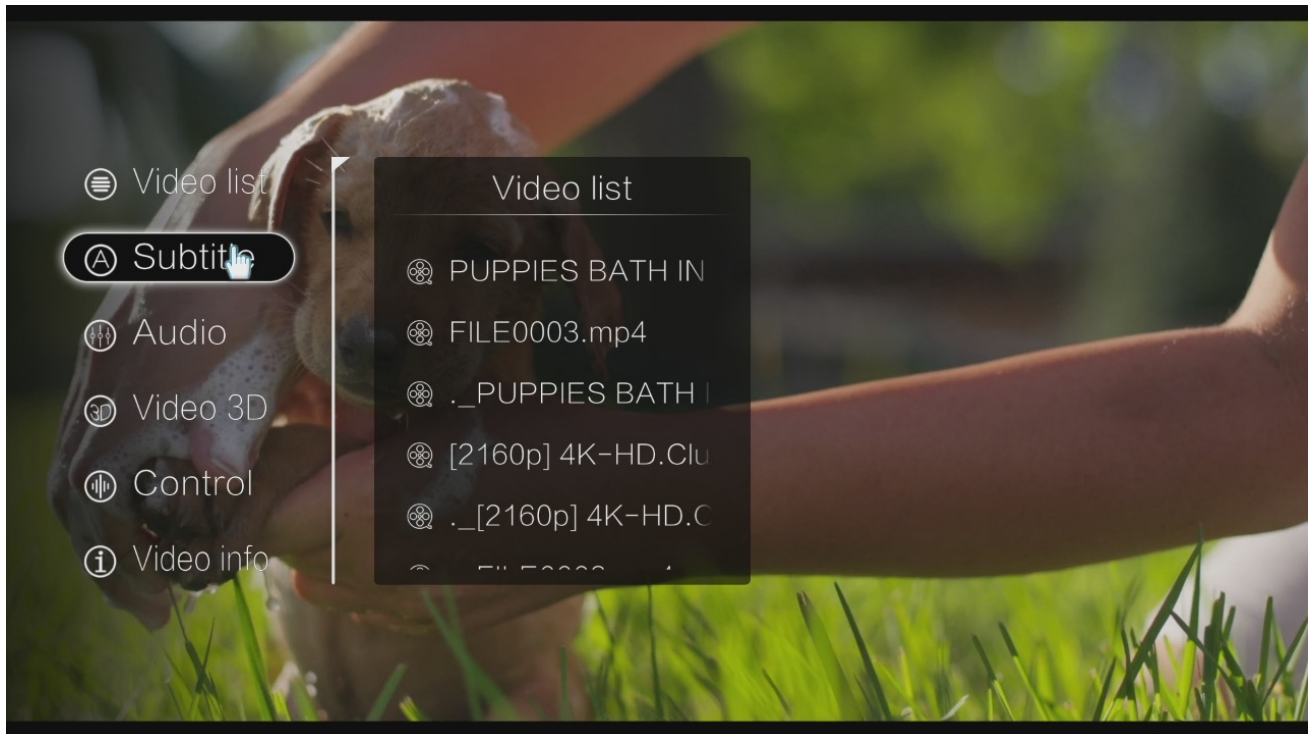
Please note:

internal Prodigy 4K player does not have jukebox functionality in the current firmware version. If you require movie information, cover art etc – please use KODI or other media player\server apps.





Use **OK** button for pause\play functionality. Use LEFT and RIGHT keys to skip\fast-forward \rewind the movie. Press the **MENU** key for additional options and command tools



MUSIC

Internal Music player can be initialized via File Manager. Please navigate to a folder containing audio files and click on a file (OK) to start the playback.



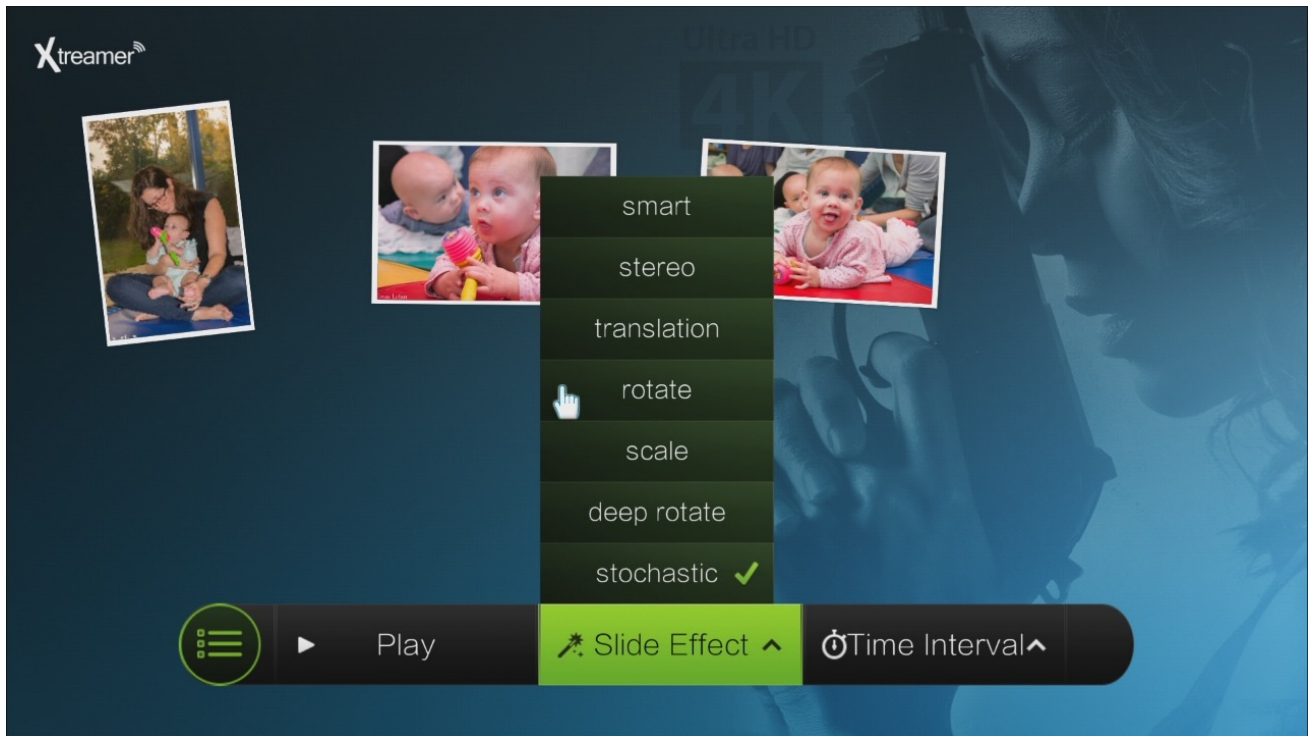
Use Directional Keys and OK button to control the music player.

Please note: other Music Player apps can be downloaded and installed from Google Play Store

IMAGES

Internal Image browser can be found in the Media Player section. The browser automatically scans all the images on your device.

Press **MENU** key to start a Slide-Show – use Directional keys and OK button to customize your slideshow with amazing effects etc.



There are other Gallery and Image Browser applications available on the Play Store.

Chapter 6

KODI Media Server



BASIC KODI MEDIA SERVER

In addition to the stock player we have KODI (XBMC) media server pre-installed on your Prodigy 4K to give you the best possible solutions to playing your media files from local and network sources.

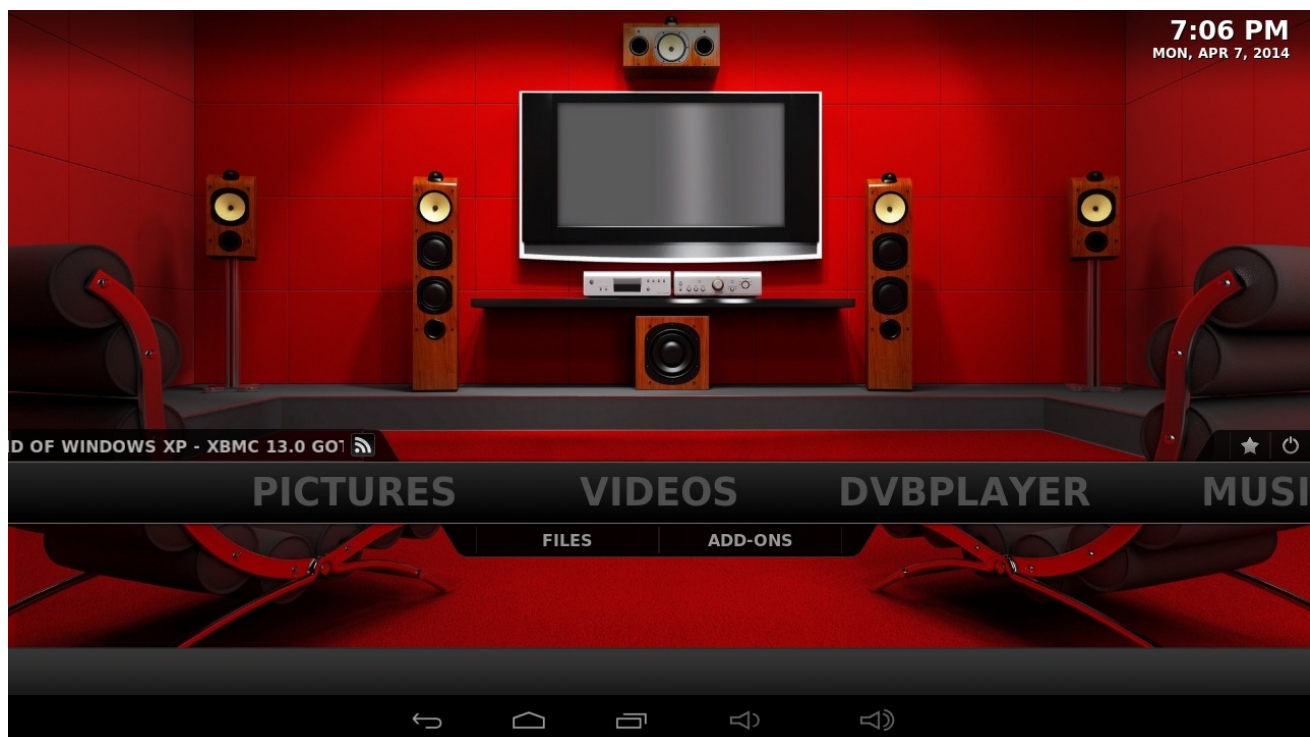
What is KODI?

KODI is one of the primary multimedia solutions on your device. This is an Android version a popular software media player and entertainment hub.

In addition to the ability to play multimedia files locally and from your network XBMC also offers a wide variety of add-ons: third-party programs enhancing the and extending the program's capabilities, such as audio and video streaming plugins for online sources, widget scripts, visualizations, screensavers, web scrapers, weather forecasts, web interfaces, and more.

KODI main screen

KODI main screen provides an easy access to the most functions of the application (such as Movies, Music, Programs and more) as well as the System Settings.



Use arrow key and OK button for fast and easy navigation.

Adding Files

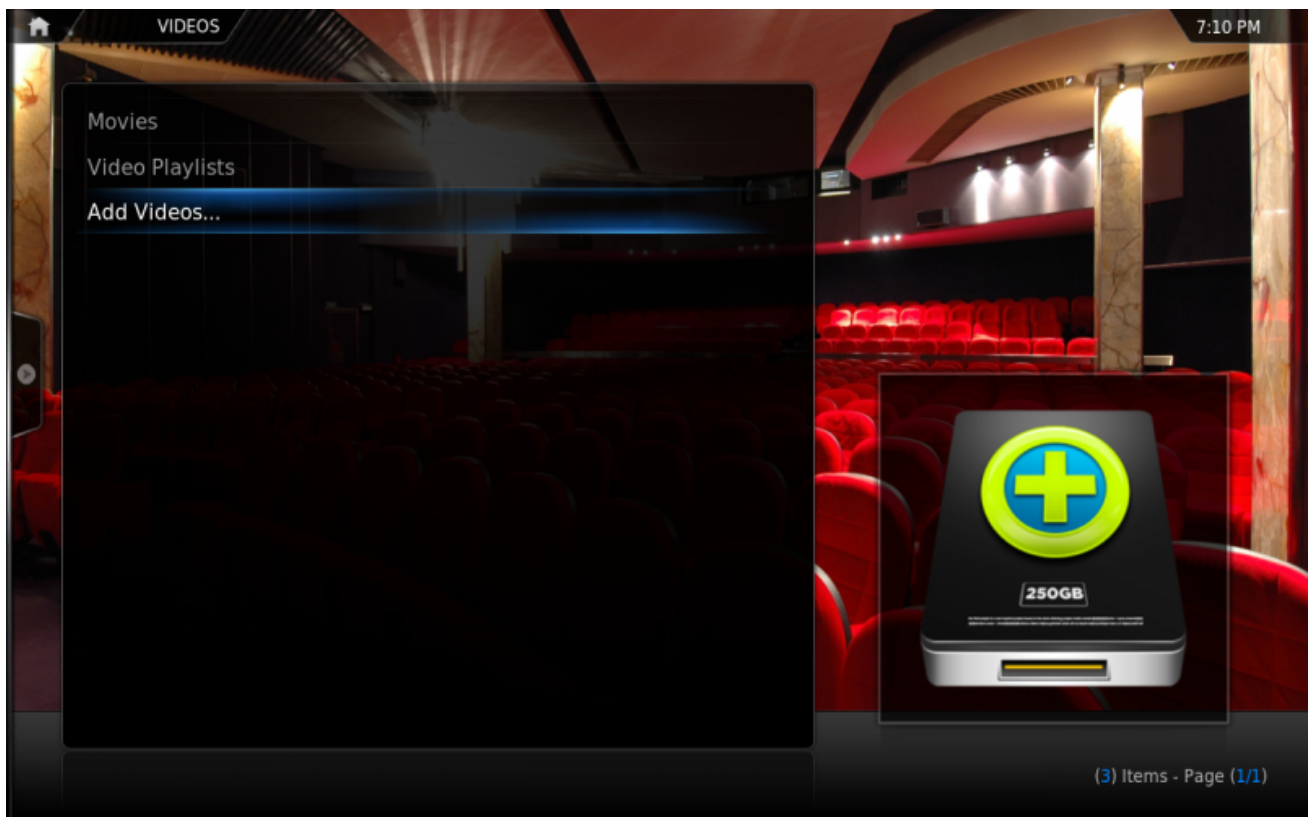
While you can just use KODI with plain file views, adding/scanning files to the library will add rich features such as cover art, summaries, thumbnails, trailers, and more.

Adding Video Files

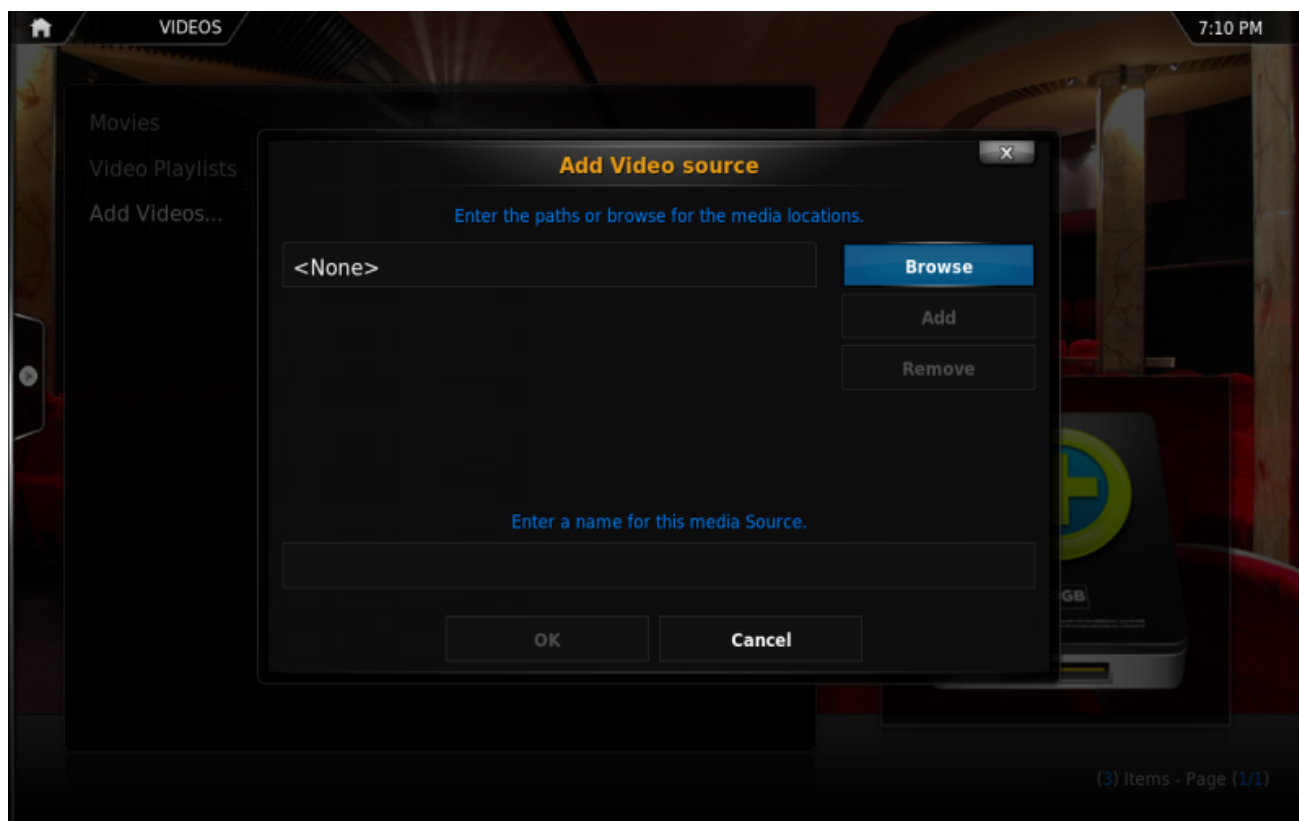
Note: to add a shortcut to your Internal HDD navigate to:
Add Videos -> Browse -> Root Filesystem -> MNT -> USB



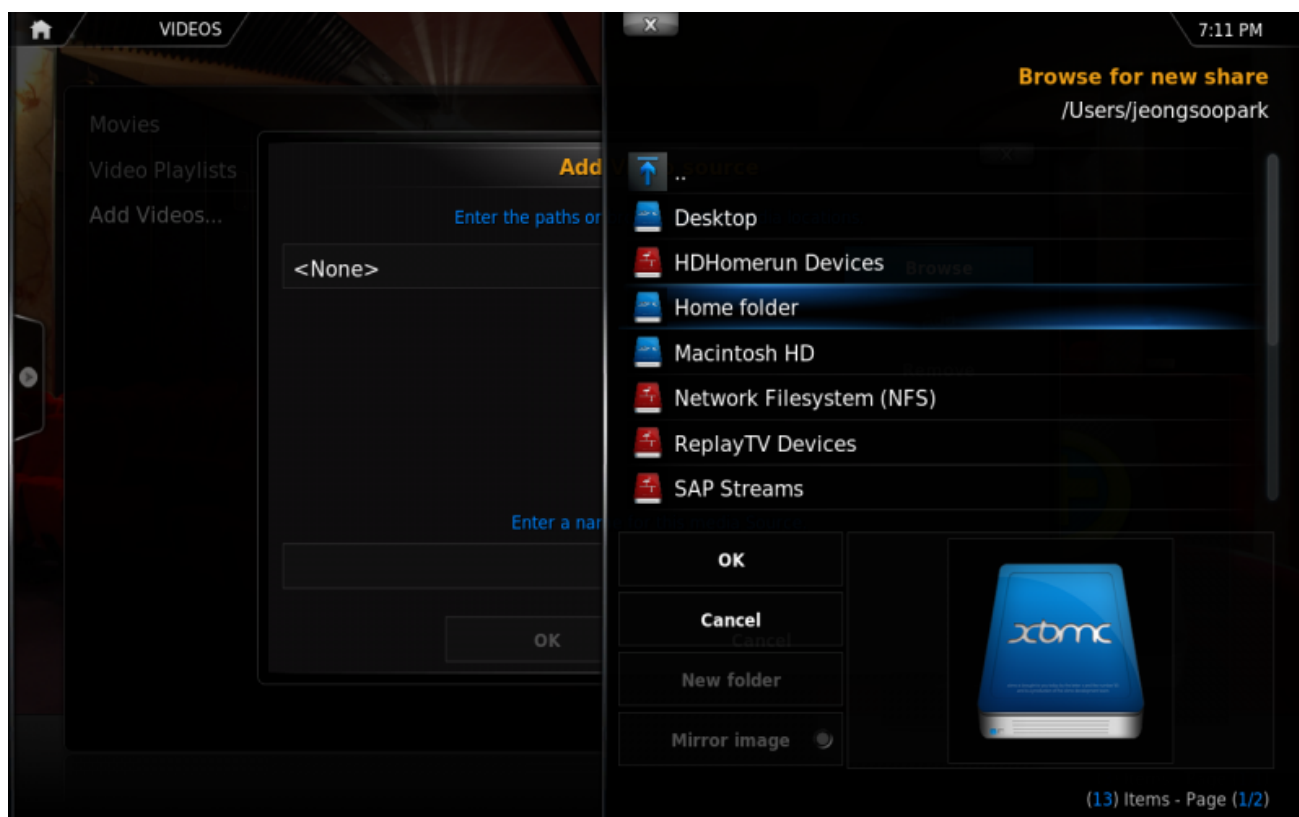
Step 1: Click "Videos" in the home screen menu.



Step 2: Now click "Add Source".

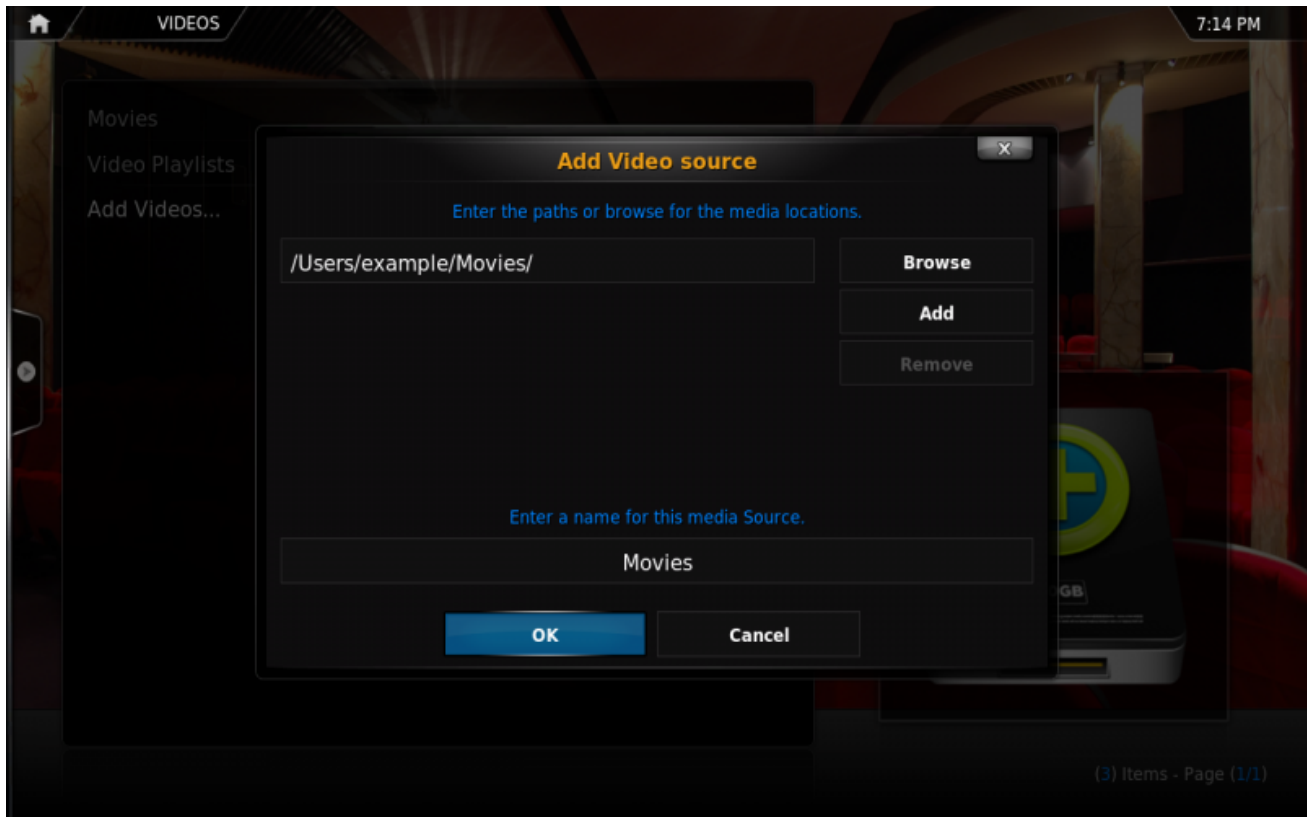


Step 3: The "Add Video Source" screen will be displayed. Then click the "Browse" button.

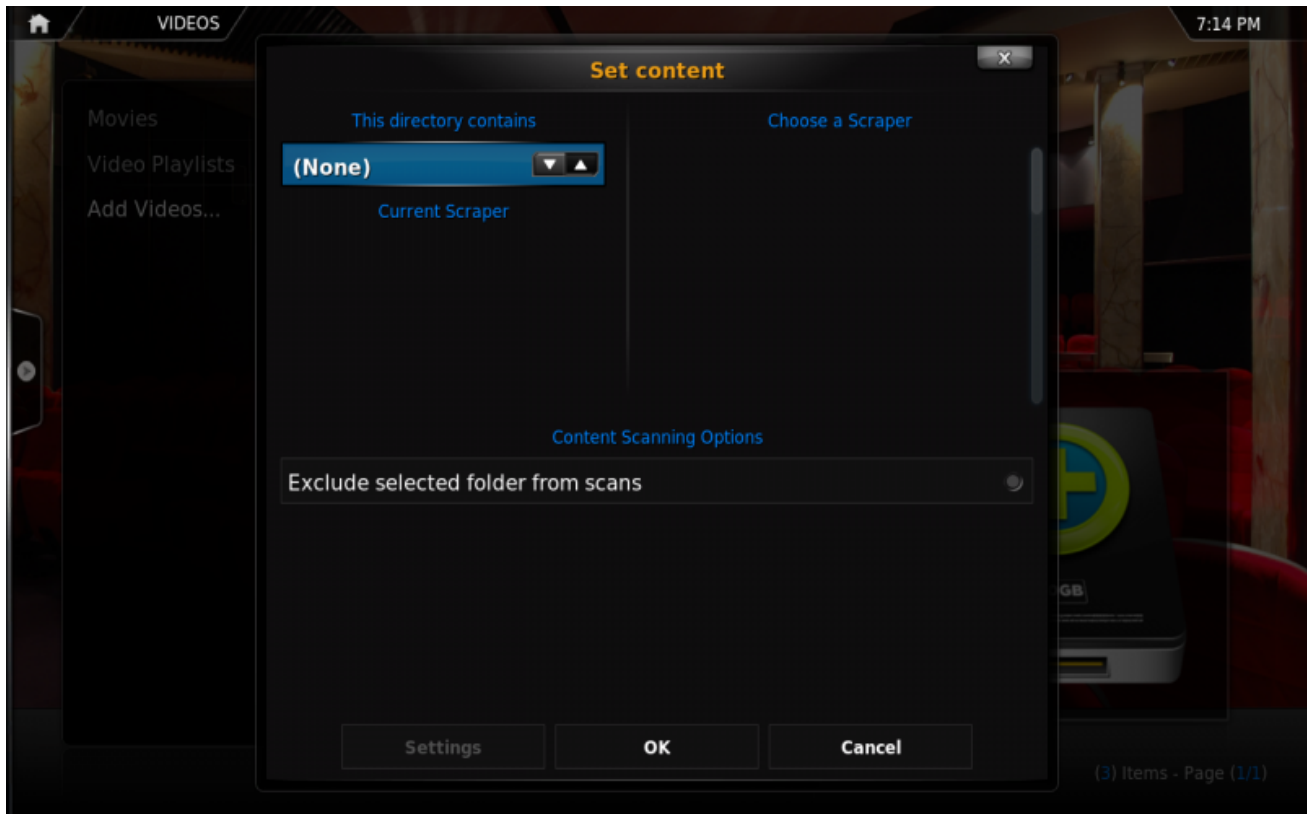


Step 4: Now browse to where you keep your videos stored. Once you have found the folder you keep your videos in, click the "OK" button.

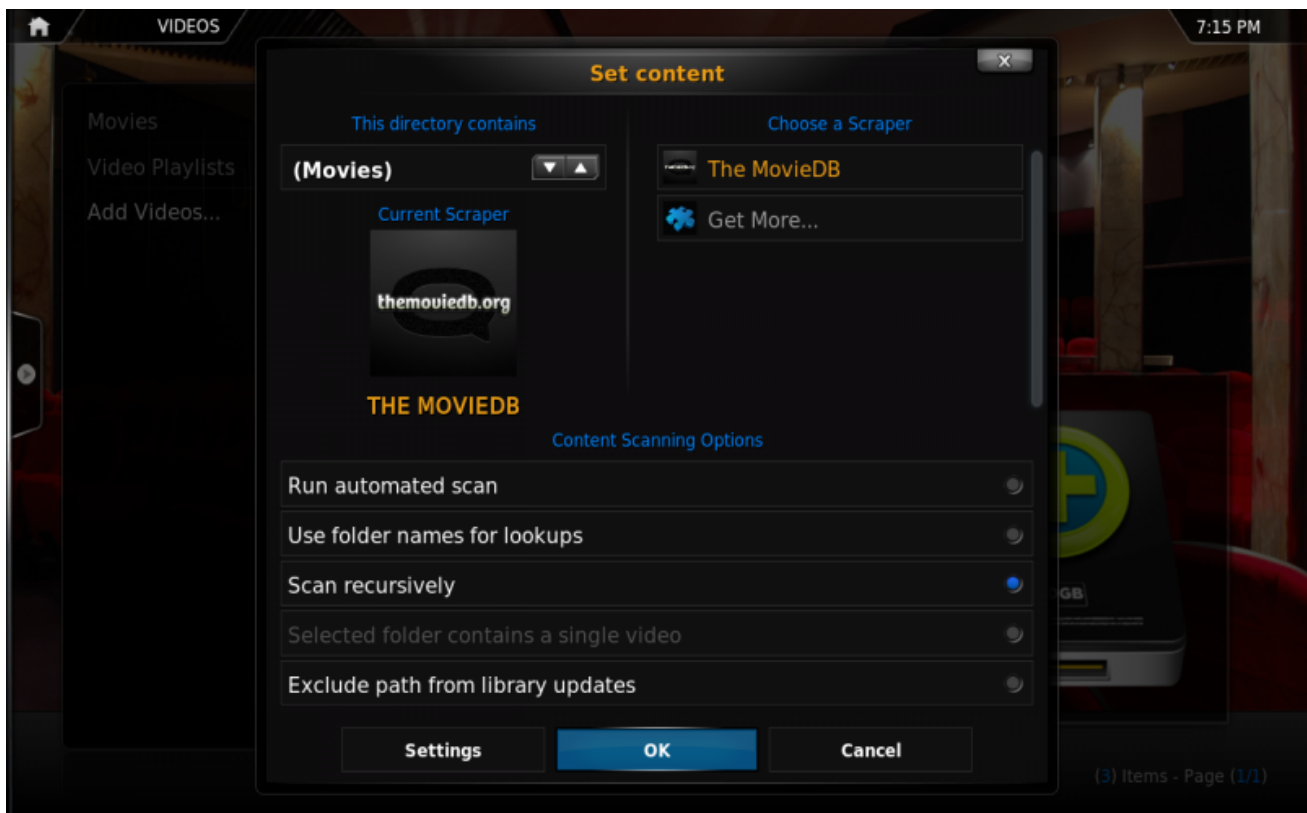
If your video library is kept on a network device, please check this [KODI Wiki Article](#) about settings up your network shares.



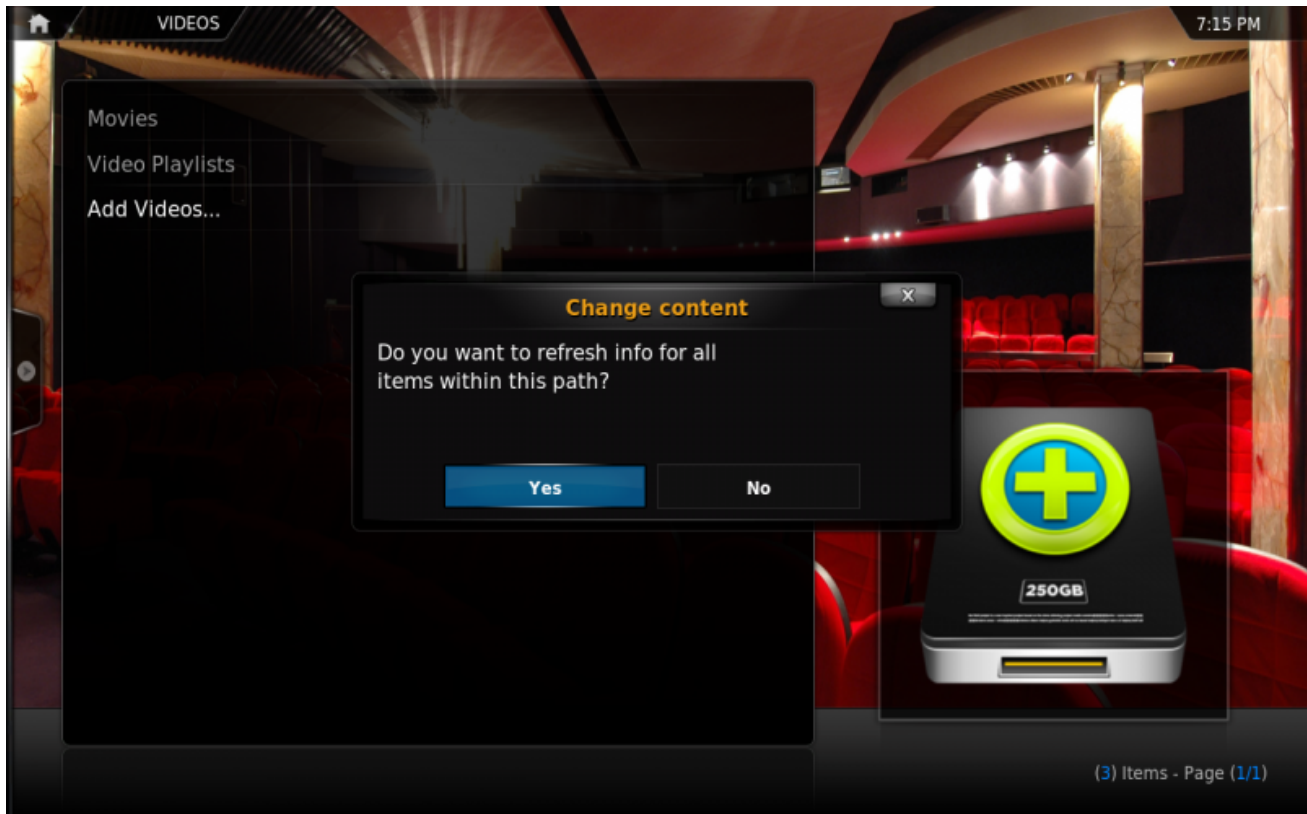
Step 5: Name this Video Source however you like. If it is a movie folder, you will probably want to name it "Movies", and if it is a TV Show folder then you will probably want name it TV Shows. The name doesn't matter to XBMC. Then click "OK".



Step 6: The set content window will display, this is where you tell XBMC what type of media is in the folder. Press the down arrow until you reach the correct type (in this example movies)



Step 7: There are a number of options underneath. Go through them, and then click OK.



Step 8: Press Yes to scan the content to the library (if no is pressed, it can be scanned later).

Adding Music Files

In order to be able to include information on your music collection in the library, KODI needs your music to be tagged. When your collection is scanned, KODI stores all the tagging information (artist, album, year, genre, etc.) in the database which allows you to efficiently search and manage your music collection. Today most media applications and players (e.g. iTunes / iPod) organize music by this ID tag information.

Adding Pictures

Adding sources for your pictures follows the same method as adding other media sources. From the Home Page navigate to Pictures, select Add Source and browse to the location of your picture files.

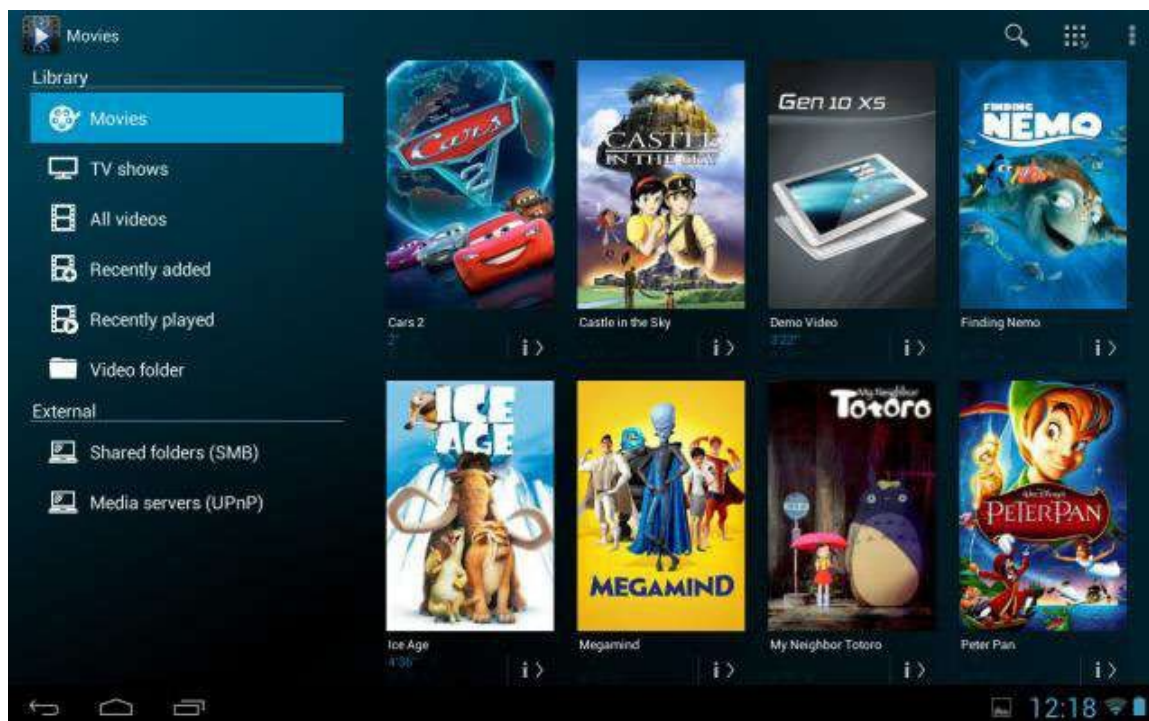
Settings

While most device options are configured in the System Settings, you can tweak some of them in the KODI System tab.

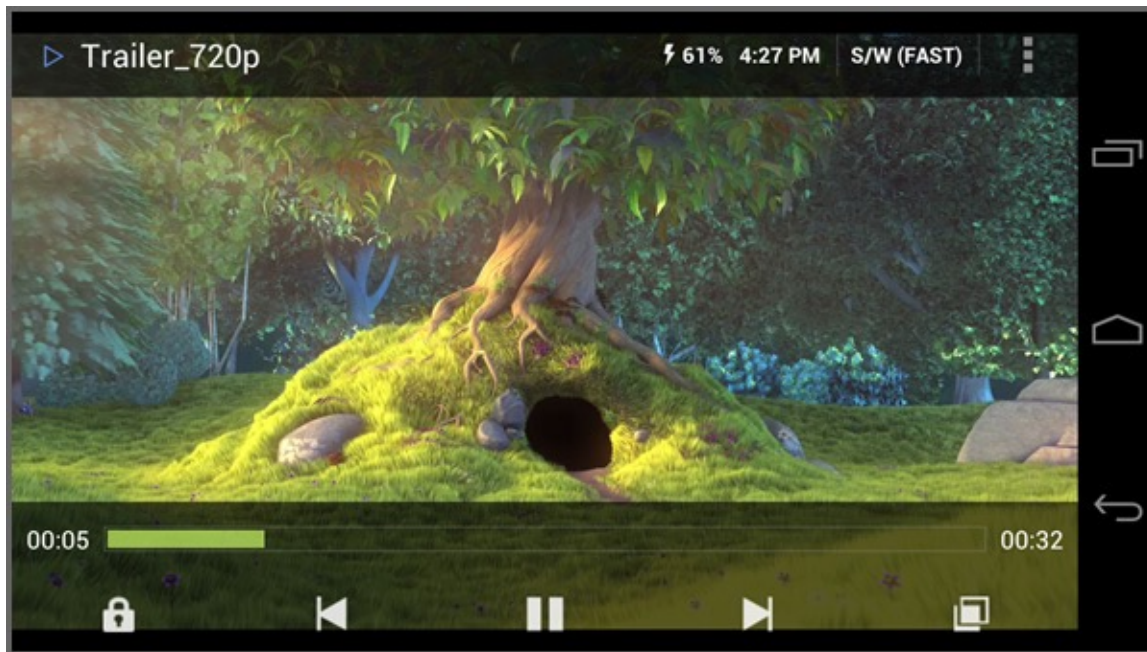


For more information about the XBMC (including video guides) please visit [KODI Wiki](http://kodi.wiki) page.

You can also install any number of other several media-player and media-server applications on your Xstreamer from Google Play Store.



Please note that different players have different features and different lists of supported formats.



In some cases you might need to install additional codecs.

Introduction into XBMC\KODI Add-ons

The beauty of [KODI](#) is its ability to expand through the use of add-ons. Depending on what you are into there will always be a plugin which will help expand the feature set of your Xstreamer. These plugins enable you to build a real media powerhouse right in your living room with access to games, sports, music and Internet video.

Some of these add-ons are already pre-installed on your device, but there are more – much more.



For details about the XBMC\KODI add-ons please have a look at these articles:

[Official KODI Add-on page](#)

[A list of Popular Add-ons](#)

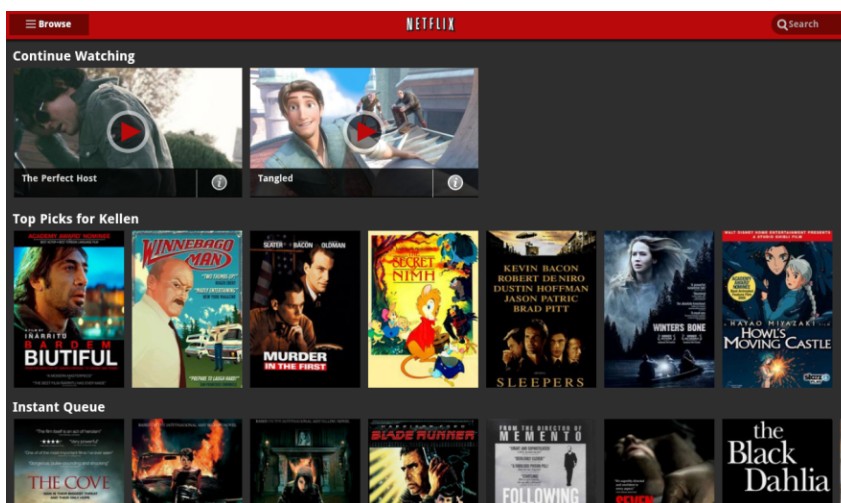
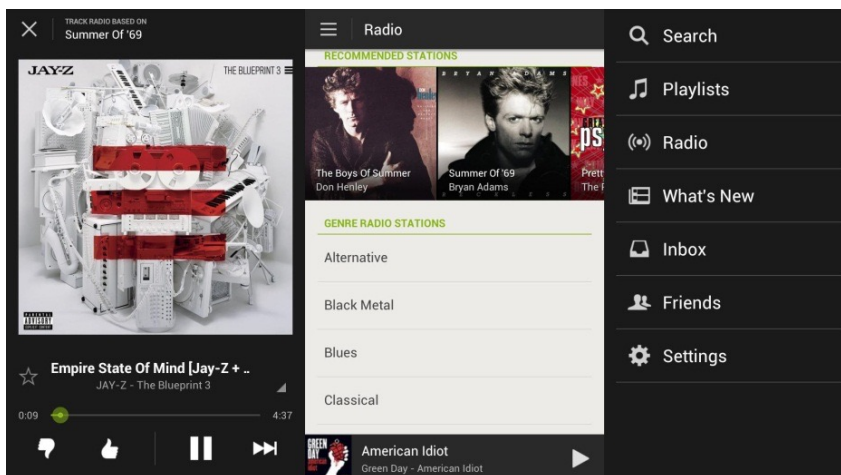
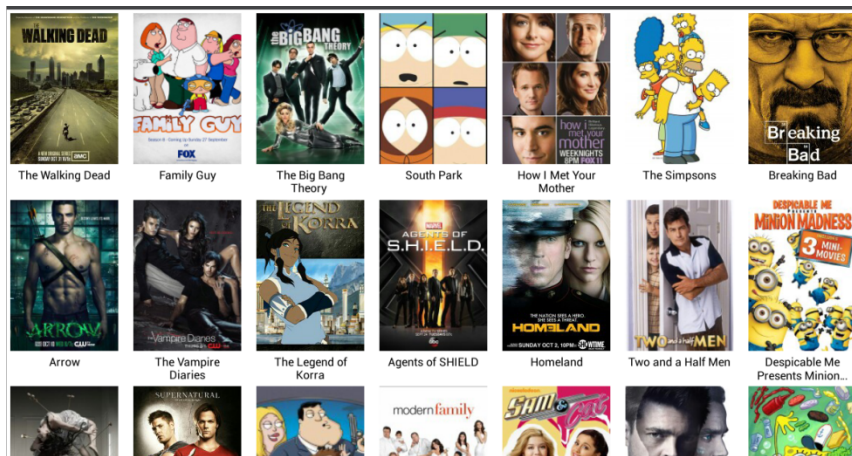
Chapter 6

Use



Streaming Online Media

Xtreamer Prodigy 4K comes with a variety of pre-installed applications providing access to millions of hours of online entertainment: movies, TV-shows, sports, news, Internet live radio, videos and podcasts.



Please note that the quality of streaming depends on your Internet connection and the network environment.

Some streaming services available on the Net require a separate payment or subscription. Some might be limited to only certain regions.

Can I play games on Xtreamer Prodigy 4K?

Xtreamer Prodigy 4K allows you to extend Android gaming and bring it to a big TV screen.



Please note, however, that the remote control included in the box might not be suitable for many Android games.

Social Media

Facebook, Twitter, Google Plus, Linkdin - socialize your Xtreamer Prodigy 4K experience by connecting with people that share you passion.



Communications

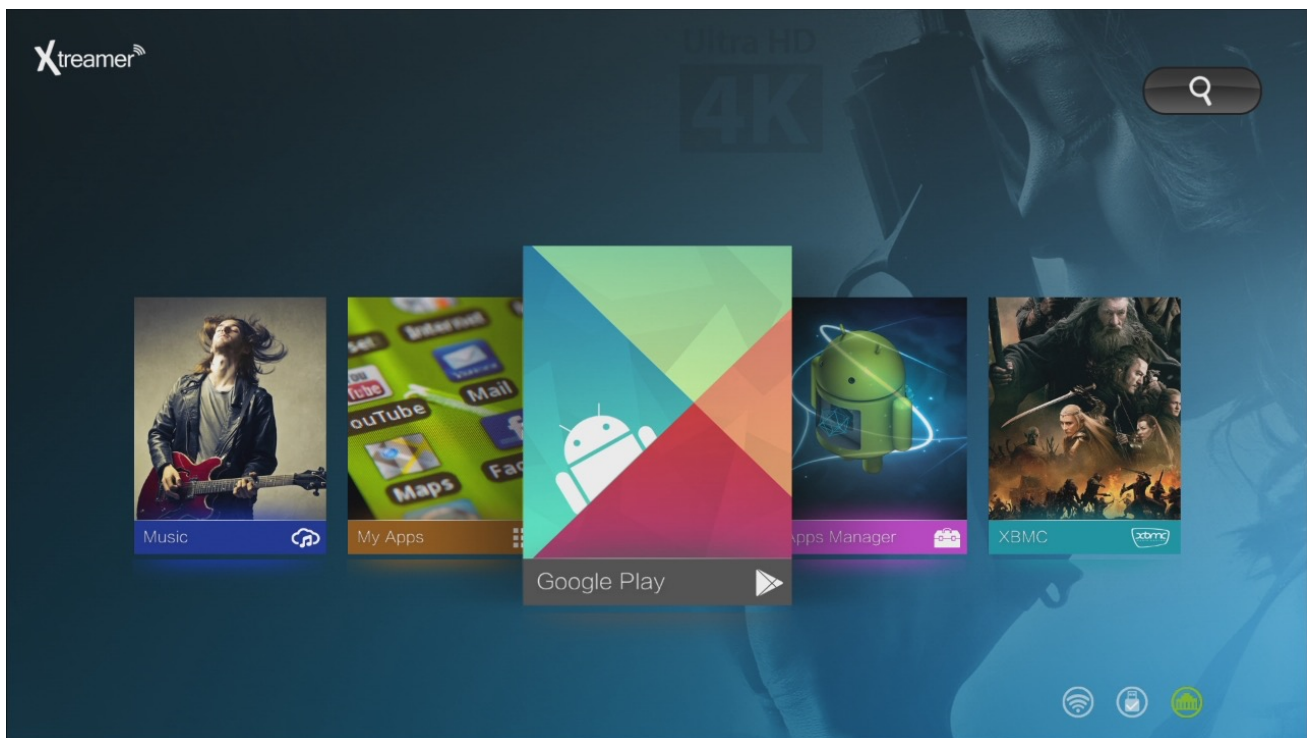
There are many communication, chatting, conference and video calls apps on Android that will allow you to easily contact your friends, family and colleagues using Xstreamer Prodigy 4K.

Accessing cloud data

With Dropbox and Google Drive, you can take pictures or movie clip on your iPad, iPhone, and iPod touch, Mac or PC and watch them on your TV instantly. It's the easiest way to get instant access to your content, no matter which device you're using.

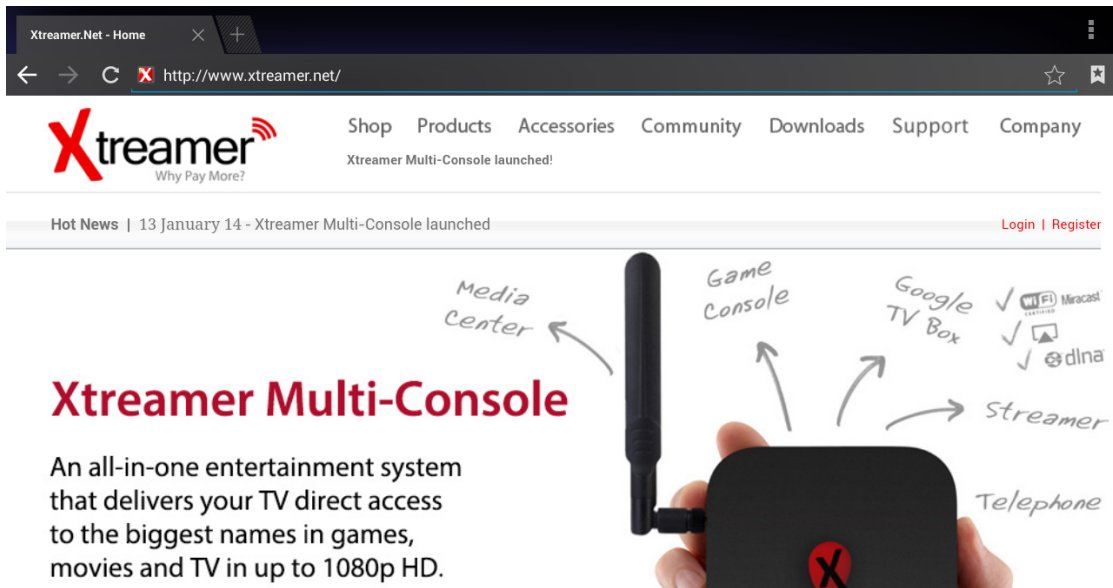
Google Play

Xstreamer Prodigy 4K is fully compatible with the Google Play Store.



Browser

Xstreamer Prodigy 4K comes pre-installed with a powerful Chrome Internet browser that provides a user-experience virtually undistinguishable from a PC.



As with any other service you can install another browser app should you prefer to.

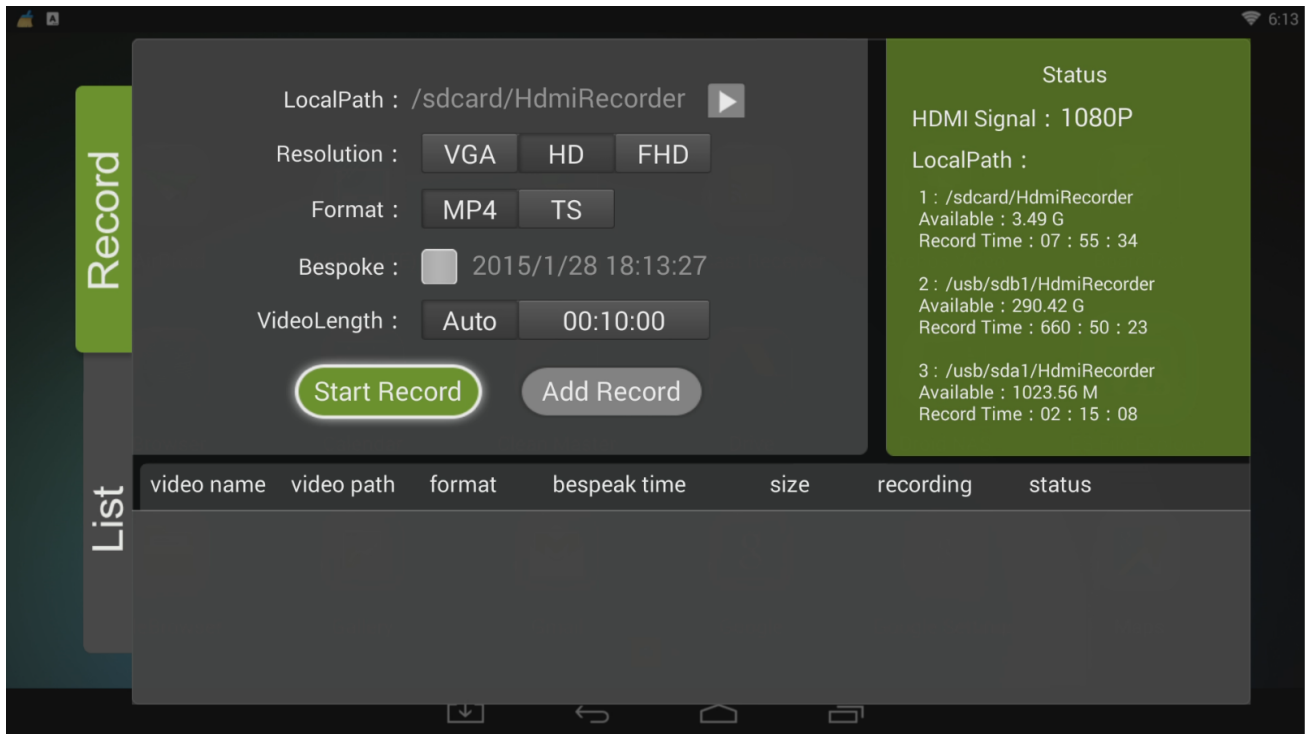
Useful Tip: with Google Chrome it is possible to sync any bookmarks that you have saved. It means that you can now keep your favorite bookmarks (from any account and any device) at your fingertips. Additionally you can override a browser's text size, thereby enabling you to easily zoom in and out of Web articles.

Cable TV

The most unique Prodigy 4K feature is its ability to record from any source connected to the HDMI IN port. Connect your cable TV box (or any other HDMI capable device), switch the both machines on and press on the CABLE TV button or on the CABLE TV tab on your Main Screen.

The options tab allows you to choose where to save the recorded files, in which resolution and format.

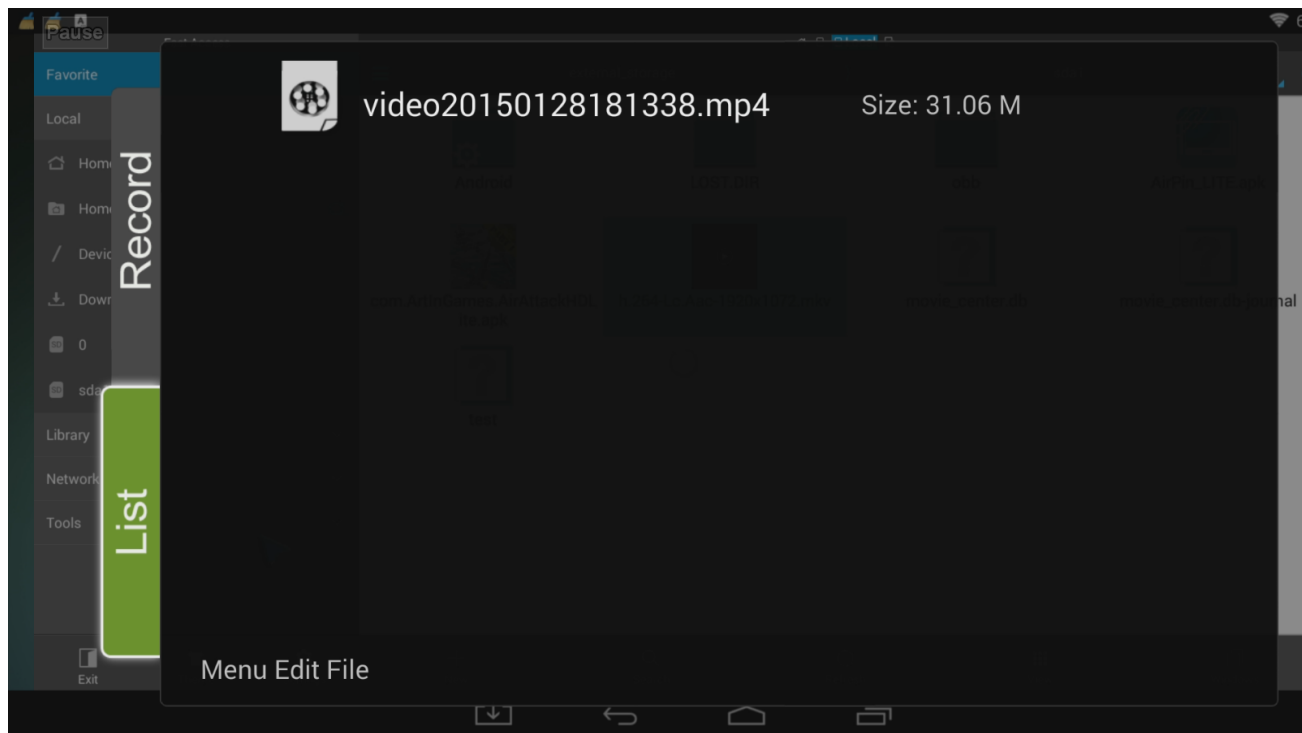
Note: Press MENU to bring up the Options at any time



Press START RECORDING



The LIST tab gives you access to all your recorded files. Press MENU button to rename files or to delete them.



Note: Access CABLE TV main menu tab in order to bring up the Recording Options. Press CABLE TV button to just switch the HDMI sources.

Chapter 8

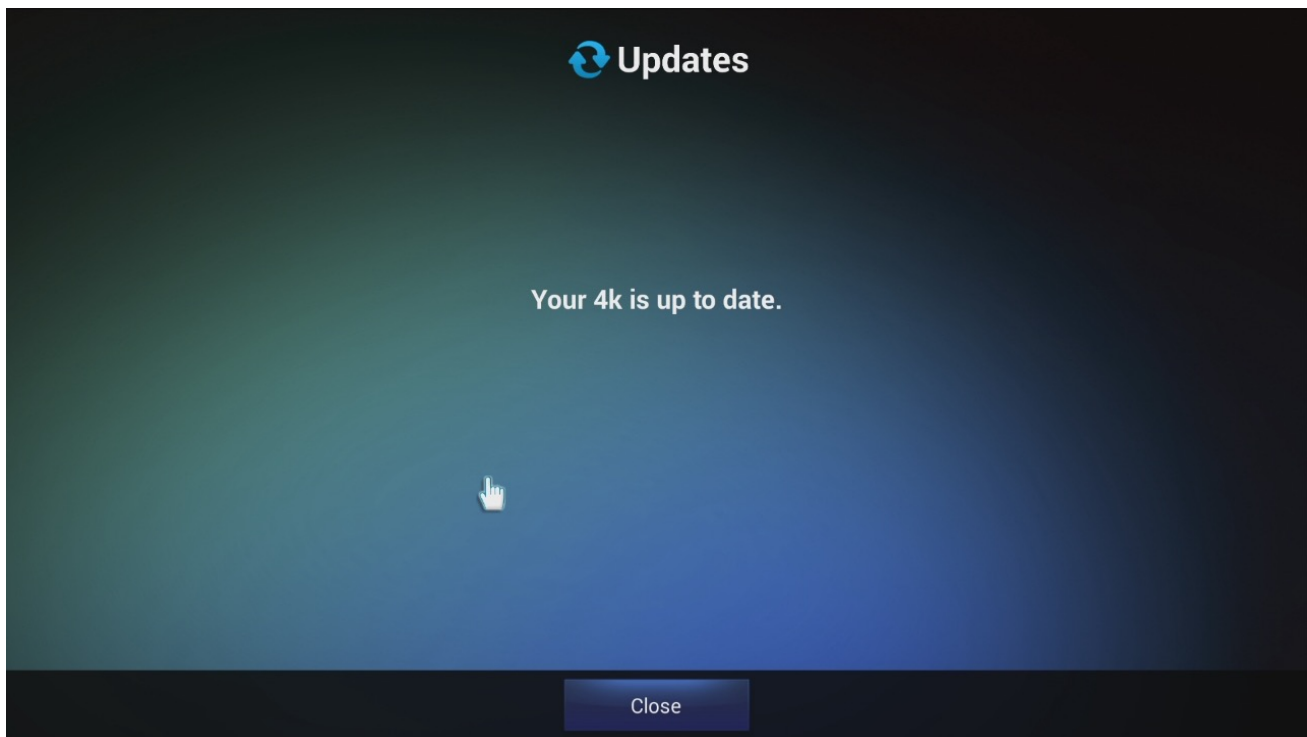
Advanced Features



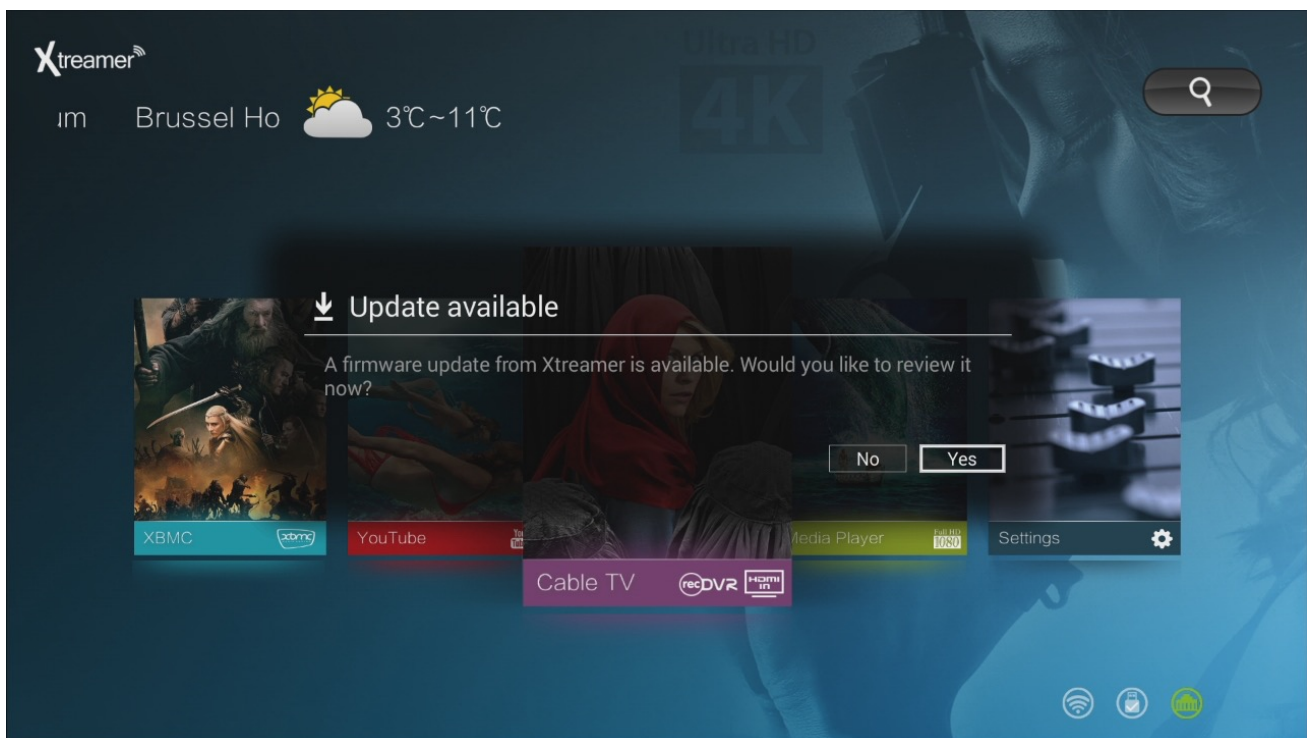
Firmware Upgrade and Installation

There are two ways to upgrade your device.

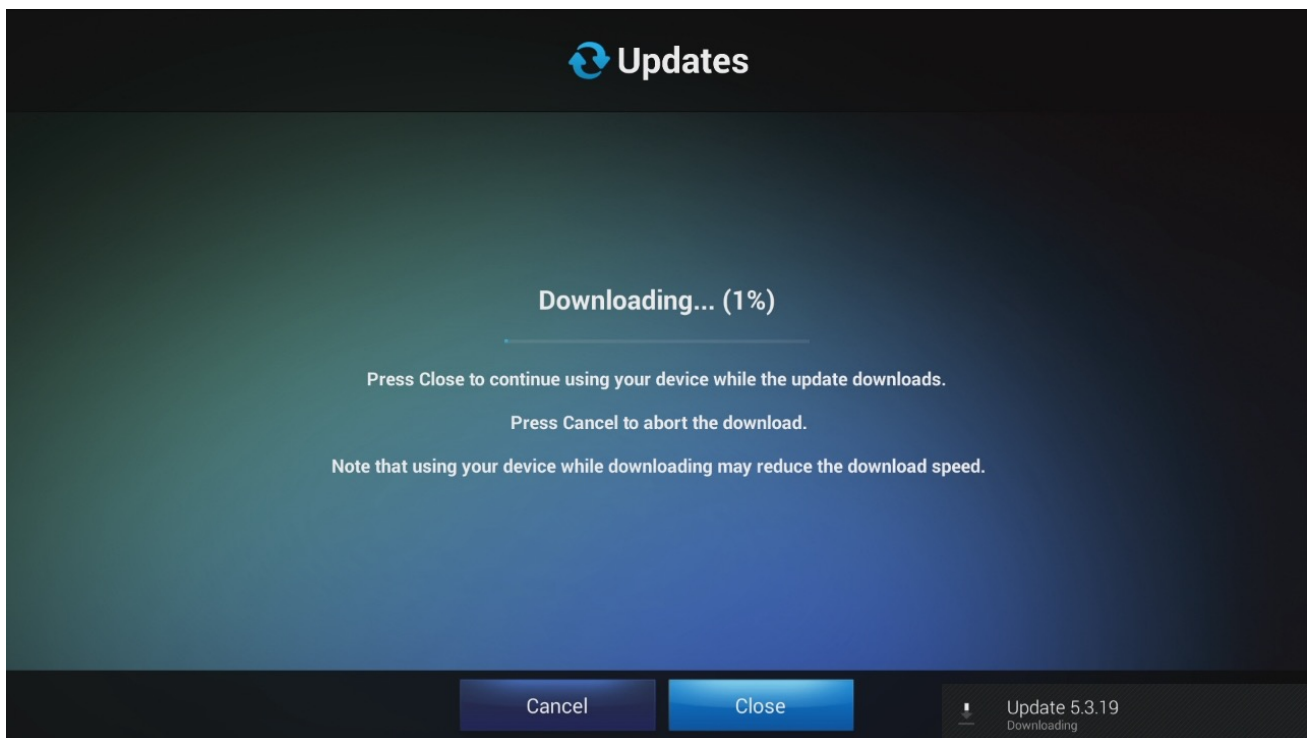
1. Over-the-Air (OTA) upgrade. The system will notify you that there is a new release available:



or:



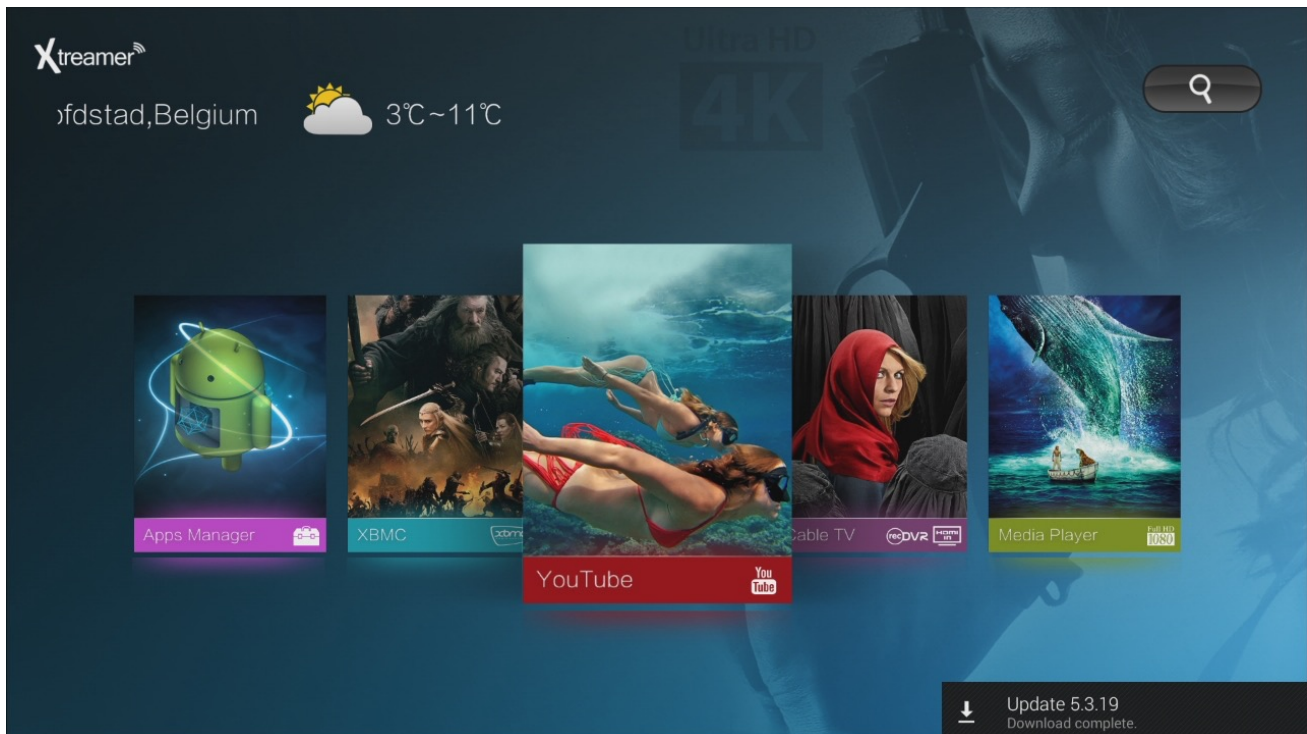
Press OK to download the new firmware version:



Once the firmware file is downloaded, reboot and install.



The system will then run the update procedure automatically. Please make sure not to turn your device off during the upgrade procedure.



2. Some major system updates require a manual procedure. There are two types of manual upgrade procedure. Make sure you check which one you are running.

Manual upgrade in case the OTA update doesn't work

- 1) Cancel download
- 2) Download the update ZIP file on your computer PC available on [Xtreamer Main Site](#).
- 3) Copy the file to the device (from a USB stick or directly from your PC using AirDroid), and move ZIP file to **/sdcard/Download/Firmware/** (the folder will already exist if you tried to download OTA) using File Explorer
- 4) Once copied, the Update app will see it and show a "Reboot and Install" button next to "Download"

Full Firmware Re-installation

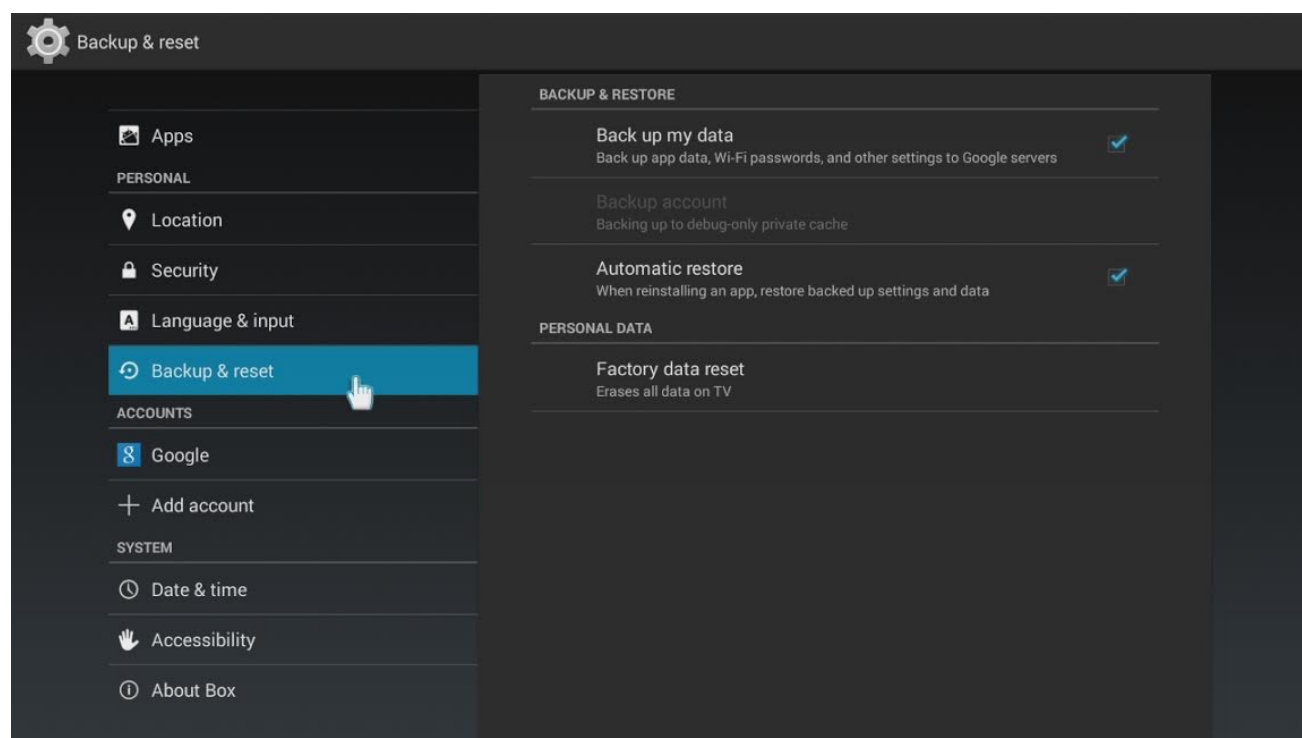
In case you cannot enter the device UI and need to reinstall the firmware from the scratch

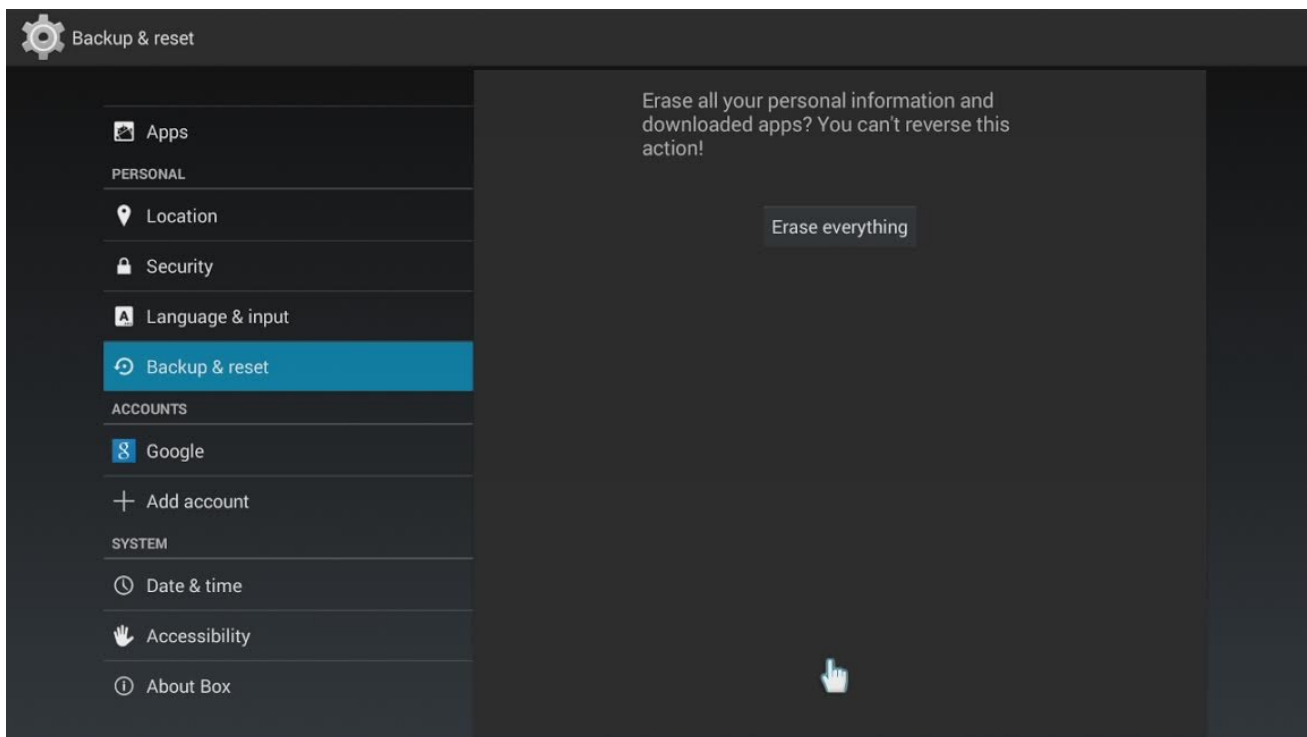
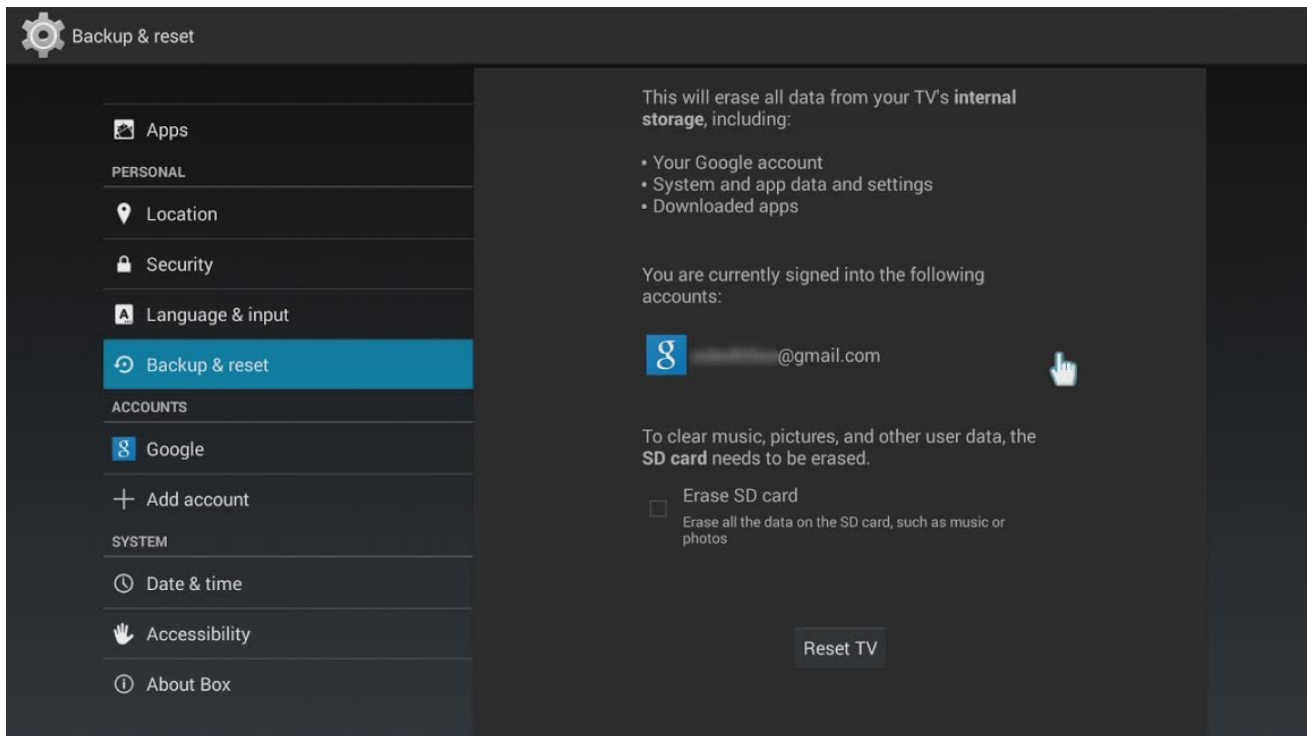
- 1) Download the full firmware file from [Xtreamer Main Site](#) and unzip the file using Windows file manager or a specialized program like Winzip or Winrar.
- 2) Copy the **BIN** file to the root of a USB key
- 3) Disconnect Xtreamer Prodigy 4K from power
- 4) Press and hold the POWER button on the device and plug the power cable in at the same time.
- 5) After 5 to 10 seconds release the POWER button and the device will start and the update procedure will begin.

IMPORTANT: During the procedure you must not disconnect the device from electricity. This can lead to a malfunction and will void your warranty.

Reset your Device

You can reset your Xtreamer from Settings -> System -> Backup & Reset

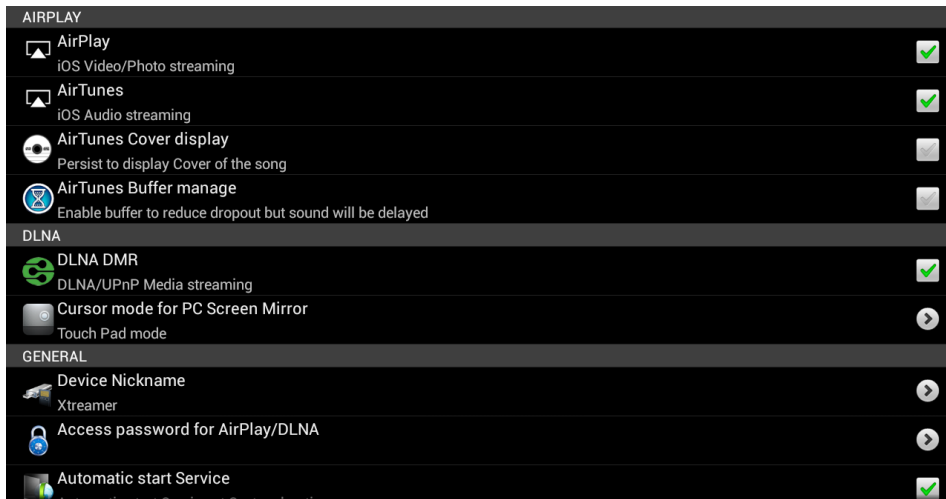





Remote Functions: use Up and Down key to navigate and OK to make a selection

AIRPLAY and DLNA SERVICES

Configure your Xstreamer to work with AirPlay service and DLNA apps via [AirPin](#) app (Available in My Apps tab)



Once the AirPlay service is enabled, you will be able to stream to your TV directly from an Apple (iOS) device. Just press on the AirPlay  icon in YouTube or any AirPlay capable app and choose Xstreamer as an output device.

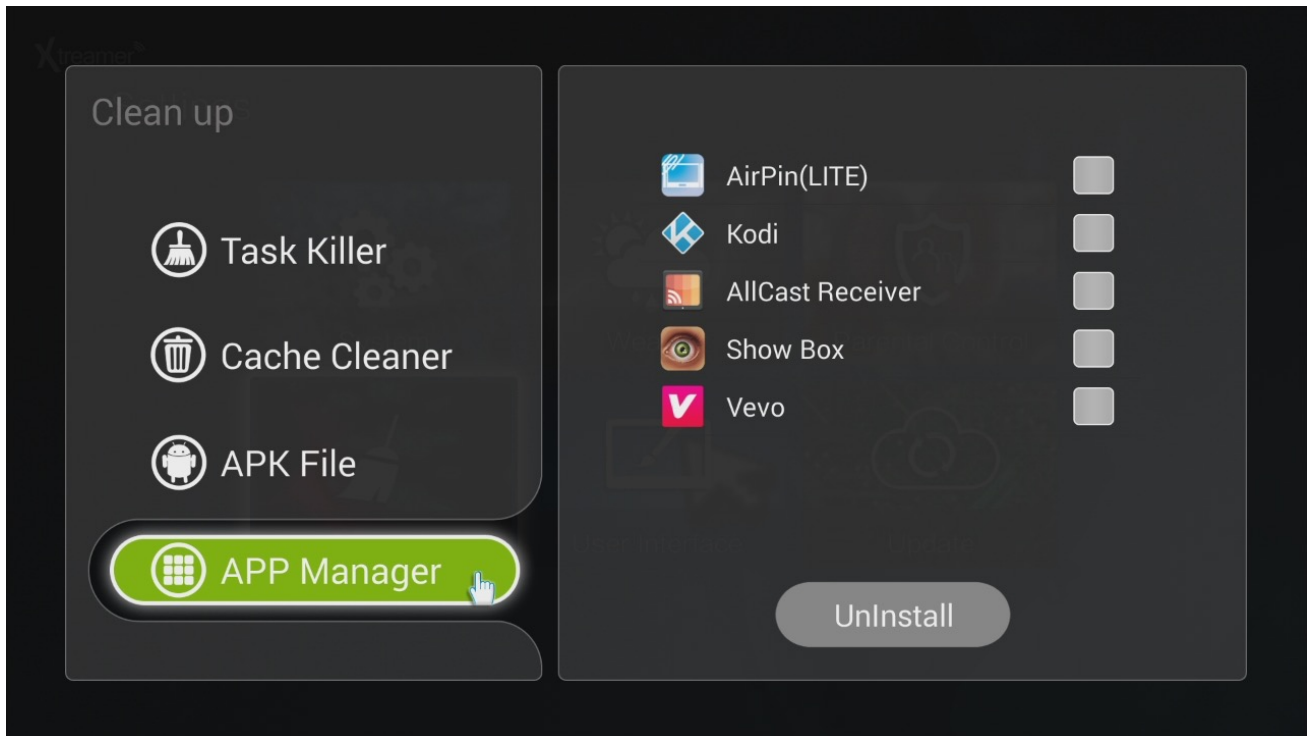
You can also use DLNA-capable applications on both iOS and Android mobile devices such as [iMediaShare](#) to stream local and Internet media.



There is another application called AllCast that can provide similar functionality that is pre-installed on your Xstreamer. It requires a client app to be installed on your mobile device.

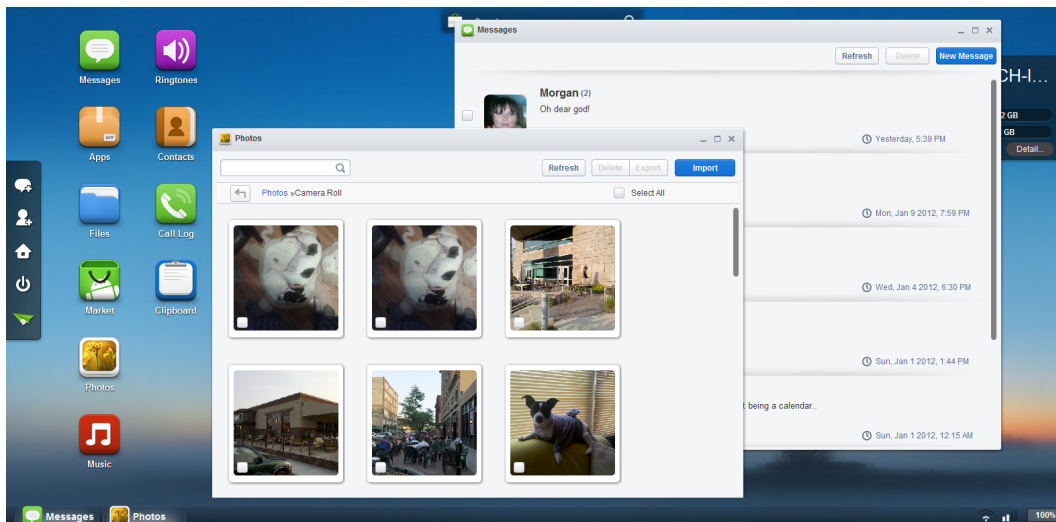
Clean Master

Clean Master can be accessed from Settings -> Clean Up. It reclaims Android device resources by cleaning caches, closing apps and processes, and deleting junk files, leftovers, and other unnecessary items. Check for forgotten APK (app installation files) using the APK FILE tab and delete them to save space. The App Manager can also uninstall applications.



AirDroid

AirDroid is a fast, free app that lets you wirelessly manage & control your Android devices (phone & tablet) from a web browser. It's designed with the vision to bridge the gap between your Android device and web browser, on desktop computers or tablet devices, on Windows or Mac.



- SMS: send and receive individual or group messages.
- Apps: Import and export .apk files.
- Files: Manage files on Android and transferring files between Android and computer.

- Photos: View and manage photos on Android and transferring photos between Android and computer.
- Music & Videos: Play and manage music & videos on Android and transferring them between Android and computer.
- Ringtones: Set music as ringtone and export any ringtone.
- Contacts: View and edit all the contacts.
- Screenshot: View the real time screen of Android devices, take static screenshots.

Simply start the app and open your favorite web browser, input the address and Dynamic Password to login to AirDroid Web Desktop.

Detailed steps:

Tips: The Android device and computer need to be connected to the same Wi-Fi network to be able to connect.

1. Open AirDroid on your Android device and tap Start. The web address (looks like <http://192.168.xxx.xxx:8888>) to visit will be revealed, and a new Dynamic Password will be generated or the Predefined Password will be displayed (looks as predefined).
2. Open your favorite web browser to visit the web address above. Enter the Dynamic Password or Predefined Password from the previous step and click Login.
3. You'll login to the AirDroid Web Desktop.

Note: Use AirDroid to move data to your Xstreamer from other network sources

AirStream

AirStream is a unique application which allows you to access your Windows and MAC computers on your Android device from all over the world using Wi-Fi or mobile networks. You can stream movies, music, photos and files from your Computer & Cloud services on your Xstreamer.

With AirStream it is absolute fun sharing media & accessing files from PC on your Xstreamer - imagine able to access GB's of videos, photos, music and files from your PC or laptop instantly. AirStream also provides access to multiple cloud apps like Dropbox & Google Drive.

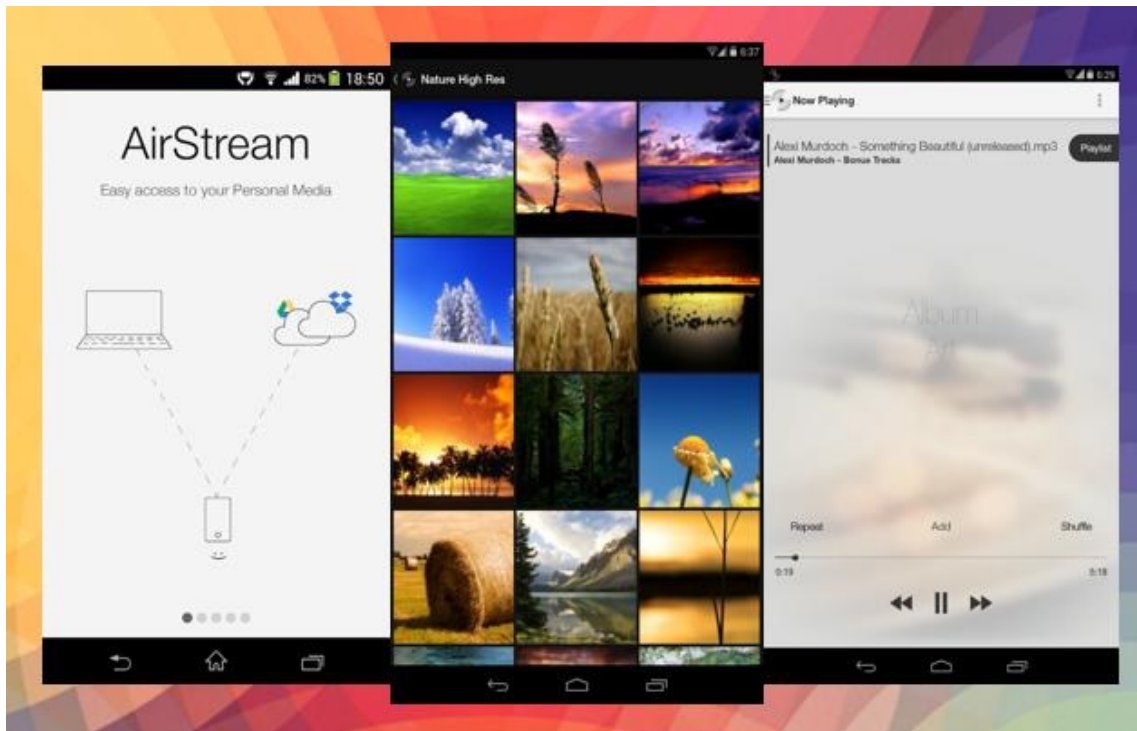
Features:

- Stream Movies and Music.
- Create music playlist for music stored in your computers
- Copy files from PC to your Xstreamer device without the hassle of wires
- Automatically connects to computers in your network - support for Windows, Mac & Linux
- Restrict access to your Personal files from PC

PLEASE NOTE: For AirStream to work please install AirStream-Suite on your computer from here: <http://airstream.io/download/>

Download and install the PC Suit on your PC.

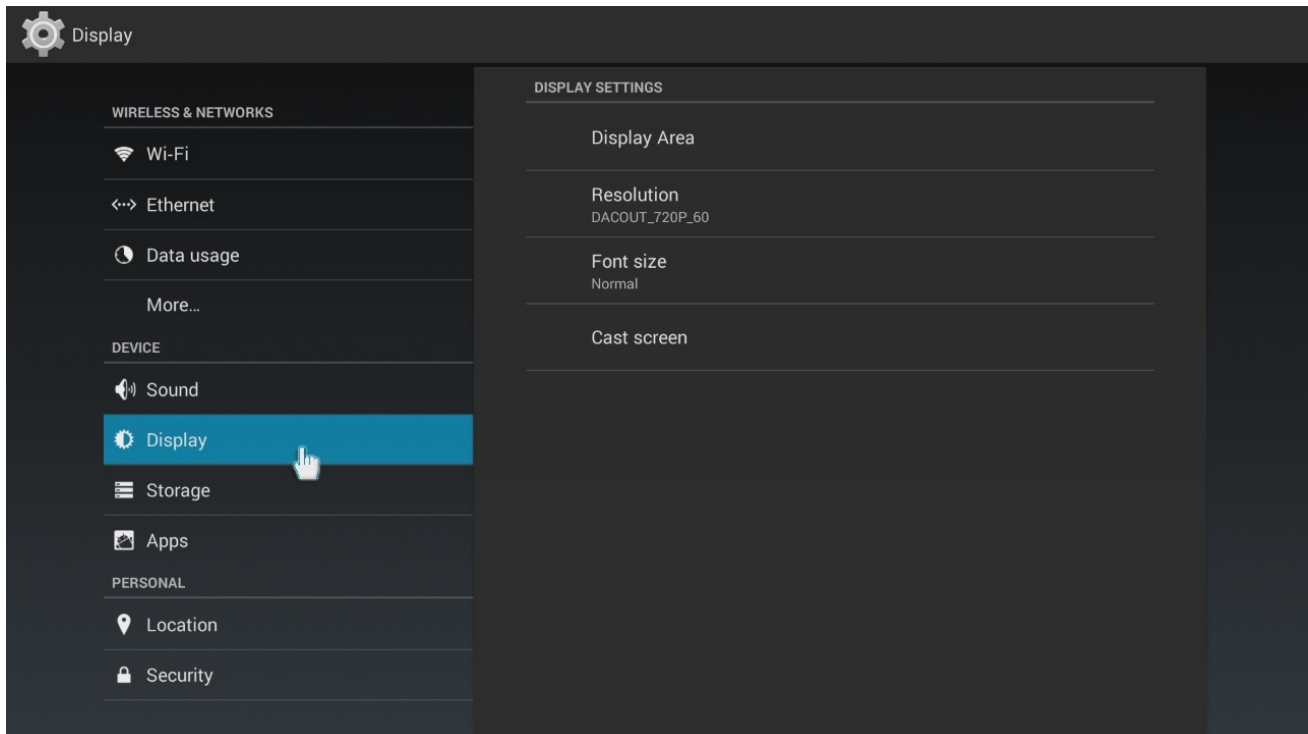
Register and login - same credentials are used on both: your computer and your Xstreamer device. Make sure to create a firewall exception for AirStream on your computer.



Miracast

Miracast is a peer-to-peer wireless screen casting standard formed via Wi-Fi Direct connections in a manner similar to Bluetooth. It allows you to mirror the screen of your mobile phone or tablet to your TV using Xtremer.

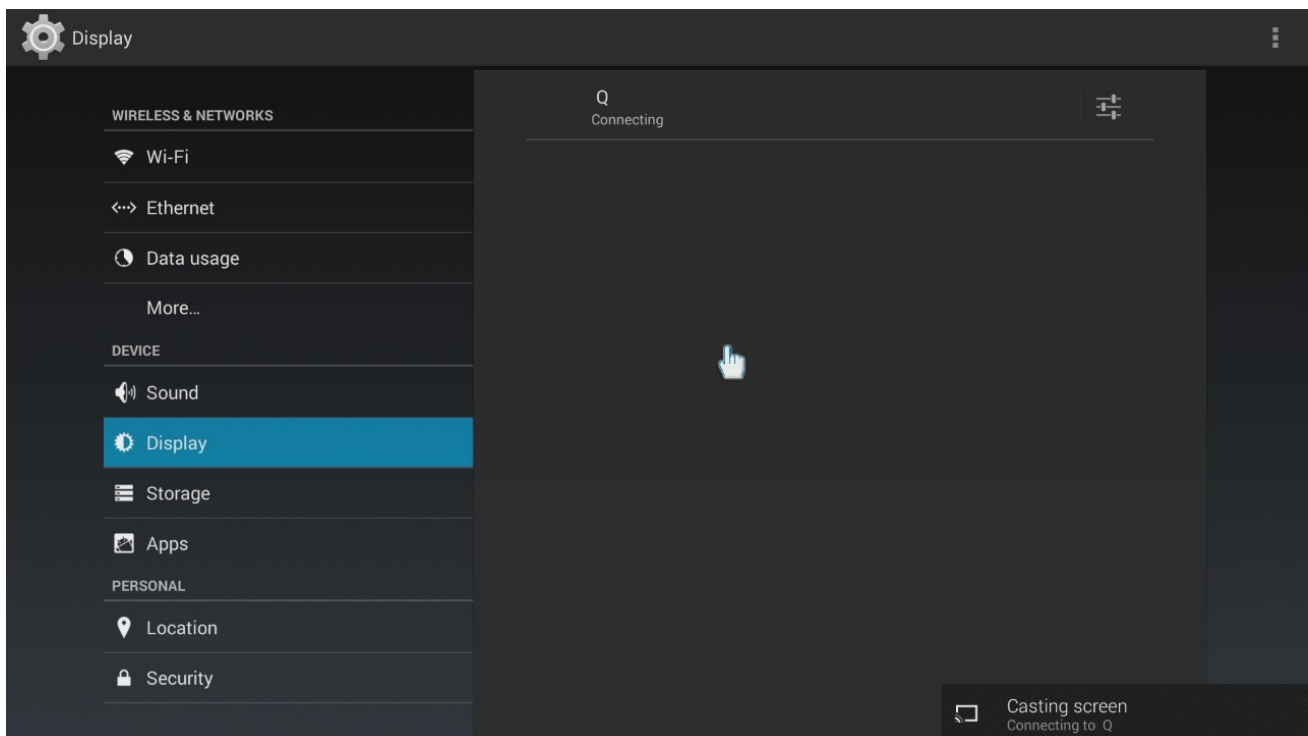
First of all, you need to make sure that both devices are on one Wi-Fi network and enable the Wi-Fi on your Android device and go to SETTINGS -> DISPLAY to enable CAST SCREEN



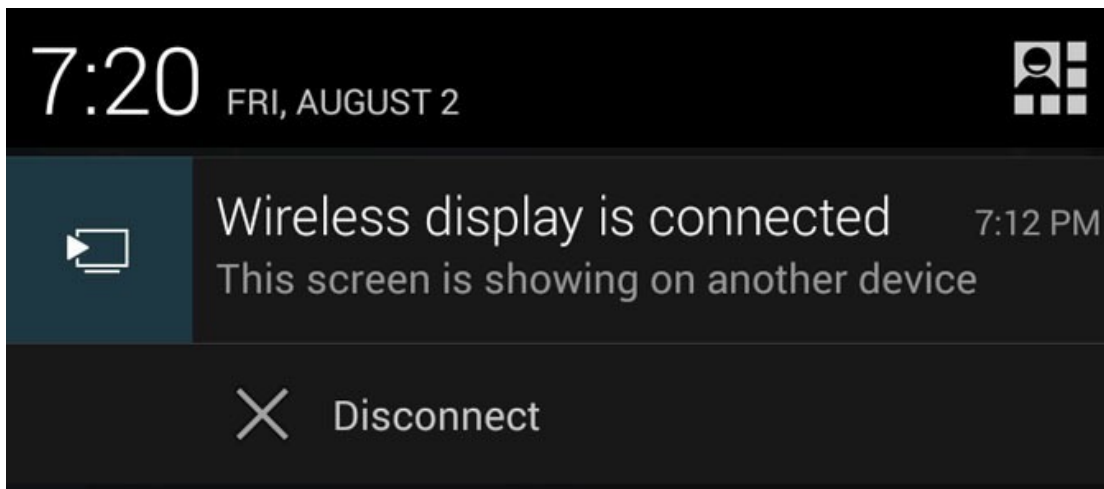
Enable screen casting\mirroring on your mobile - > the settings are usually found in the same place.

Once your Android device is detected by the Xtreamer, click on the icon (for example Xtreamer Ban-G).

The connection might take a few seconds.



Then you will see on your phone:

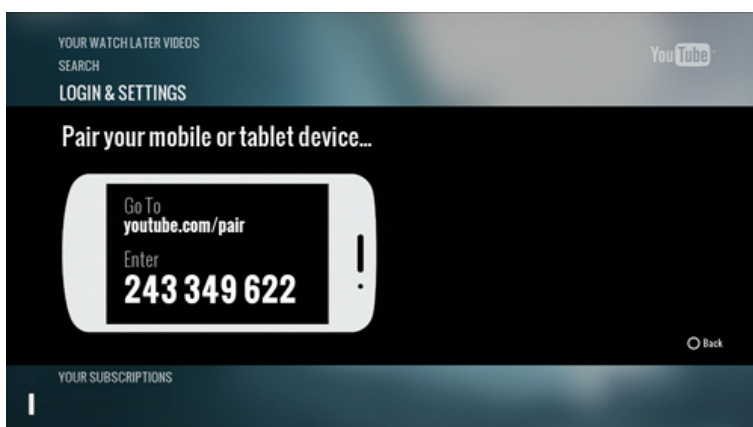


And the screen of your Android device will appear on your TV.

YouTube Sync

The Android YouTube application was created for mobile devices and that means a touch panel. So every time you want to search for a video you have to bring up the virtual keyboard and use your pointer to enter the query.

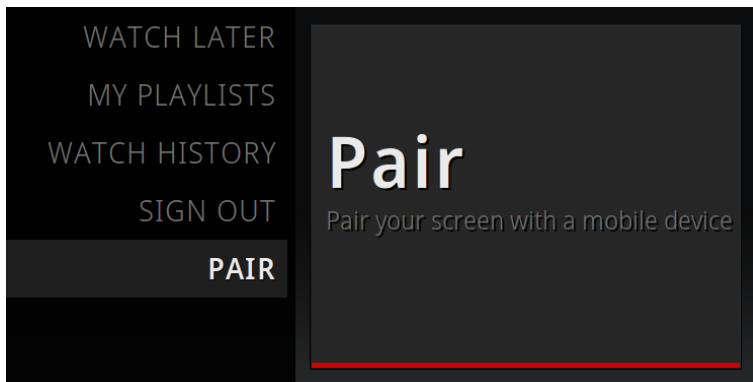
However, there is a simpler way. You can pair the app on your Xstreamer to a phone or tablet and easily control them.



Step 1: Find the pairing code

- Launch YouTube on your Xstreamer.
- Navigate to Settings.

- Scroll to the Pair device screen.



Step 2: Enter the pairing code

Android

- Launch the YouTube Android app.
- Go to Settings.
- Select Connected TVs then select Add a TV.
- Enter the pairing code shown on your Xstreamer.

iOS

- Launch the YouTube iOS app.
- Go to Settings.
- Select Connected TVs.
- Enter the pairing code shown on your Xstreamer.



Click the icon to select the display on which your video will play.

Once the procedure is complete you can use your mobile device to control the application on your TV.

Chapter 9

Safety



- Do not use this apparatus near water.
- Clean only with dry cloth.
- Do not block any ventilation openings. Install in accordance with the manufacturer's instructions.
- Do not install near any heat sources such as radiators, heat registers, stoves, or other apparatus (including amplifiers) that produce heat.
- Protect the power cord from being walked on or pinched particularly at plugs, convenience receptacles, and the point where they exit from the apparatus.
- Only use attachments/accessories specified by the manufacturer.
- Unplug this apparatus during lightning storms or when unused for long periods of time.
- Do not operate this device outside the temperature range of 5°C–35°C (41°F–95°F).
- Do not drop or shake the device.
- Do not move the device when it is powered on.
- Power supply cords should be routed so that they are not likely to be walked on or pinched by items placed upon them or against them.
- Do not overload wall outlets.

Chapter 10

Contact Us & Support



To contact Xtreamer Support, please refer to: <https://shop.xtreamer.net/pages/Contact-Us.html>