

**DVB-T**

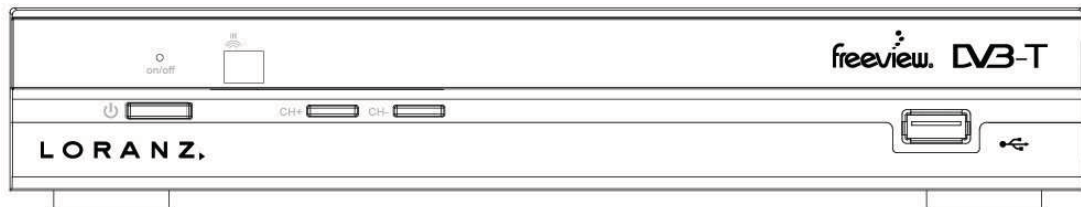
**LORANZ**

**High Definition Set Top Box**

**Instruction Manual**

**Model: LZ0031STB-USB**

**freeview**



*DVB-T*

Please read these instructions carefully and retain for future reference

### Helpline

Please read these instructions carefully and retain for future reference  
For assistance during normal working hours (9am-5pm, Mon-Fri) call Asia Pacific Brands Limited  
New Zealand call: 0508 274 2722 or visit the website [www.loranz-av.com](http://www.loranz-av.com)

## Safety Instructions



To prevent fire and electric shock, do not expose this receiver to rain or moisture. In order to avoid any possible risk of electric shock, never attempt to open the unit. In case of the unit breaking down, repair of the unit should be carried out by qualified technicians. No part of this unit should be repaired by users.

### **WARNING!**

Presence of live parts inside the unit! Do not open. Risk of electric shock! No part should be repaired by users.

The maintenance of the receiver should be carried out exclusively by qualified persons.

If the power cord is damaged, it must be replaced or repaired by the manufacturer, its after-sales service, qualified electrician or persons of similar qualification in order to avoid possible danger.

The product must be installed in accordance with national regulations.

The used batteries must be disposed of safely. Throw them in appropriate rubbish bins in order to protect the environment.

### **Proper Installation**

- Place the receiver on a flat, firm and stable surface. Do not put it on a carpet or rug.
- Do not place the receiver on top of another device, such as an amplifier. This may lead to overheating.
- Do not put anything above the unit (for example, CDs or magazines).

### **Sufficient Ventilation**

- Place the receiver in a well-ventilated location to prevent accumulation of internal heat. Allow a gap of at least 10cm to the rear and the top of the unit, as well as a space of 5cm to both sides to avoid overheating.
- Do not obstruct any ventilation openings with items such as newspapers, tablecloths, curtains, etc.

### **Protecting the Receiver from High Temperatures, Humidity, Water and Dust**

- The receiver should not be exposed to dripping water or splashing.
- No objects filled with liquids, such as vases, shall be placed on the unit.
- Do not place any objects that might damage your unit near it (e.g. liquid filled objects or candles).
- Do not place any source of flames such as lit candles on the receiver.

### **Electricity Supply**

- Please unplug the receiver in case of prolonged non-use.
- If the power cord is damaged, it must be replaced or repaired by the manufacturer, its after-sales service, qualified electrician or similar qualifications to those to avoid possible danger.
- This device must be connected to a 220-240V ~ 50Hz electrical network.
- The plug must remain readily accessible after the installation of the product.

## LORANZ HD FREEVIEW SET TOP BOX FEATURES

Congratulations on choosing to buy this LORANZ HD Freeview Receiver with USB PVR Function. We hope you enjoy your High Definition Digital viewing experience.

Freeview HD approved with USB PVR function

USB port – Allows for recording programs and plays video, music, or image files onto a recording device

Electronic Program Guide (EPG) – 8 day freeview TV guide

1080p High Definition output

HDMI output

Coaxial component, Video Out, Audio L/R, RF IN/OUT terminals

Digital LED display

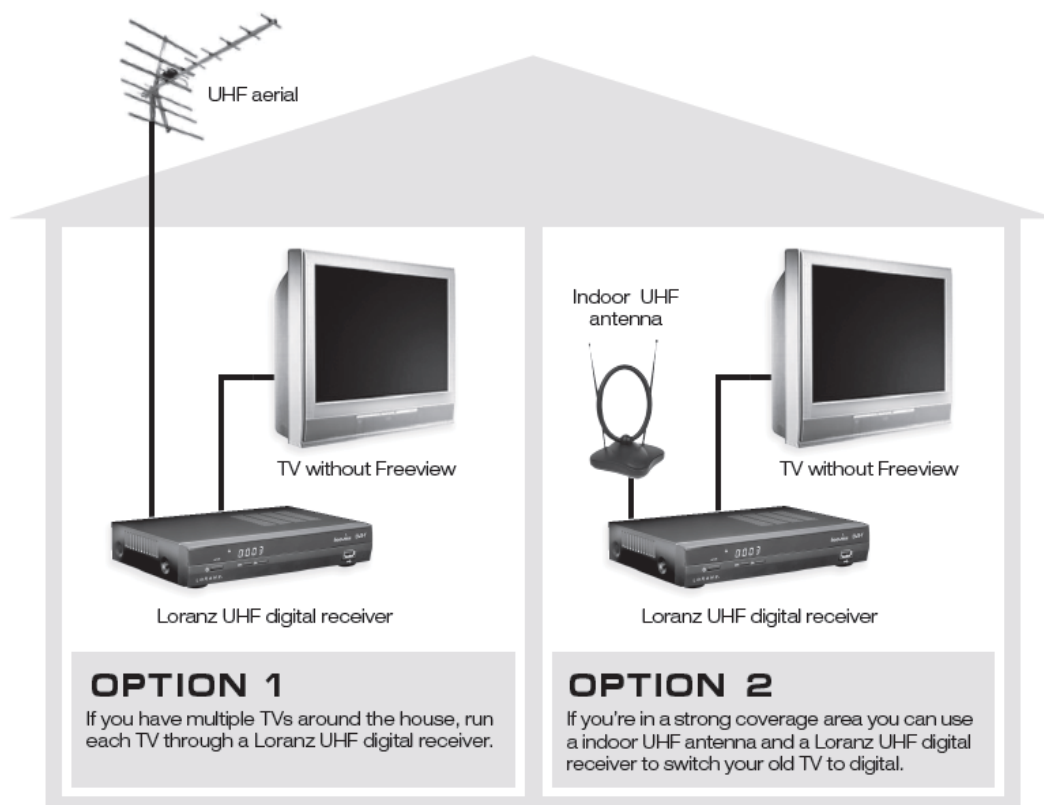
Teletext

Remote control

### BASIC AERIAL INSTALLATION INFORMATION

To ensure you have the correct aerial for this LORANZ Set Top Box, you require a UHF aerial to ensure you receive the correct signal and picture. Please see the diagram below to help you with the aerial requirements of this unit. Please note the UHF aerial or Indoor antenna is not supplied with this Set Top Box. You may need to contact a qualified aerial installer to determine your aerial requirements or strength of your signal.

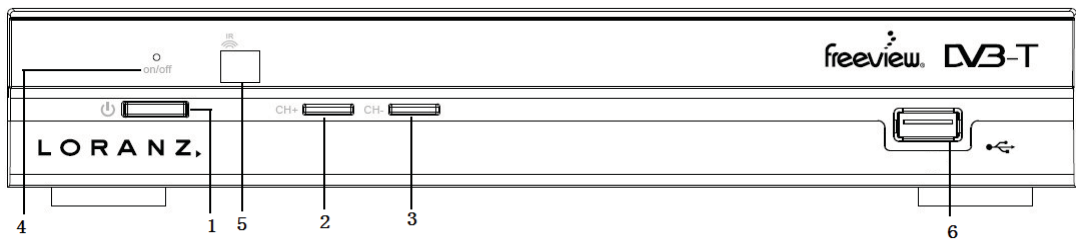
*Note: The freeview set top box does not work through Sky satellites dishes or similar.*



## PARTS GUIDE

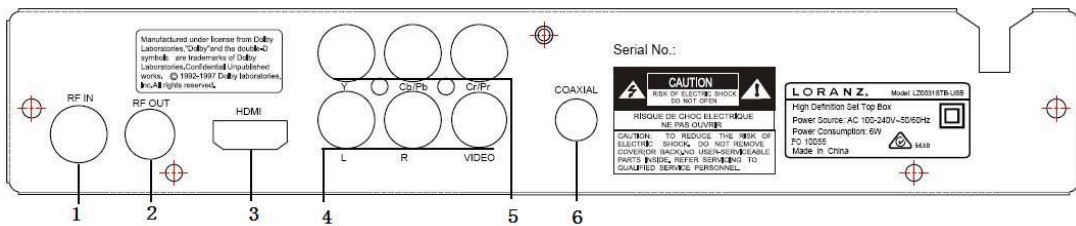
### Front Panel

1. Standby ON/OFF
2. Channel +
3. Channel -
4. ON / OFF Indicator Lamp
5. IR Remote control sensor
6. USB 2.0 Port. Firmware upgrading, Media Playback, PVR function (personal video record)



### Rear Panel

1. RF In Socket (connects lead from UHF external Aerial)
2. RF Out Socket
3. HDMI socket (connects to TV/LCD display)
4. Video and Audio Out
5. Component Outputs (connects to equipment with Component Input sockets)
6. Digital Coax Out Socket



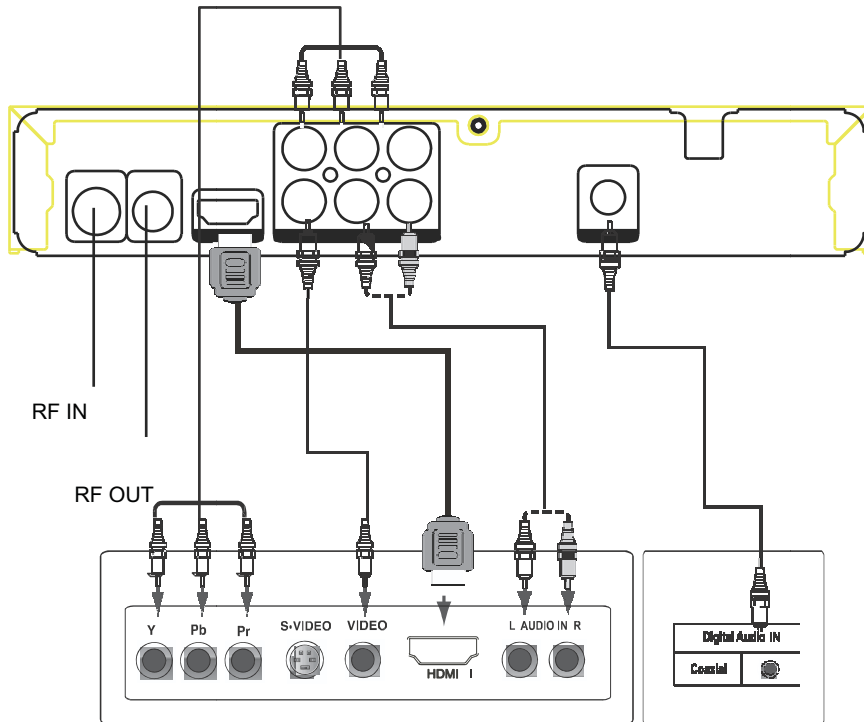
## CONNECTION GUIDE

The below diagram shows the available connection options - Note: Some accessory leads are not supplied.

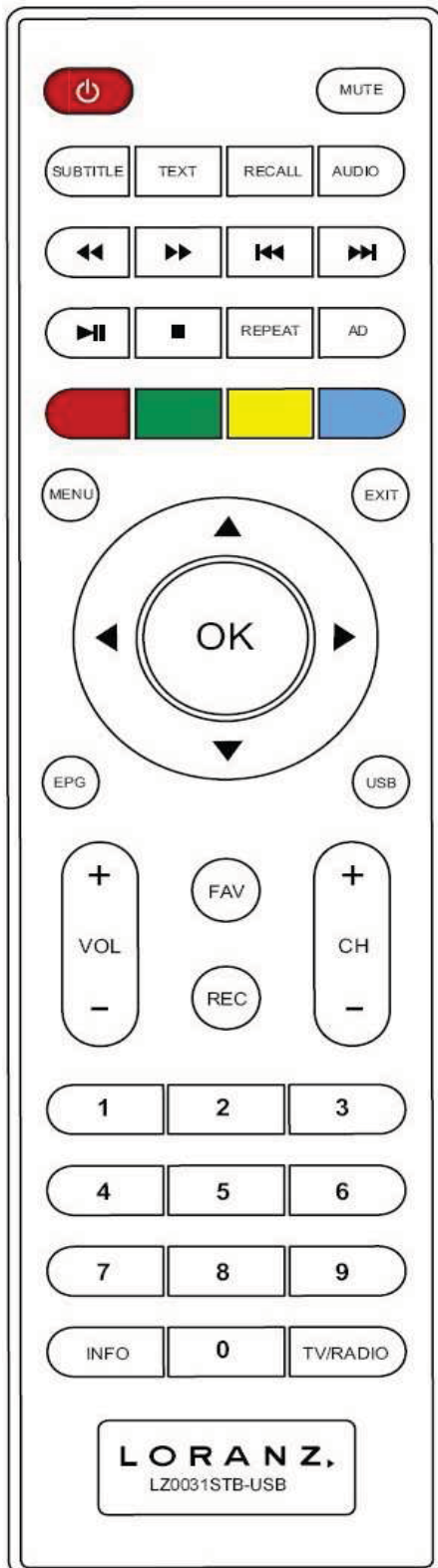
Plug your UHF Aerial Input coaxial plug to the RF IN socket.

Connect the RF output socket (optional) to the RF input socket of your display device

The YELLOW/WHITE/RED lead supplied is designed to connect the **VIDEO/AUDIO L- R** out sockets of the set top box to the **VIDEO** and **AUDIO L-R** input sockets of your display unit.



## REMOTE CONTROL



- 〔STANDBY〕 Switch unit On/Off
- 〔RECALL〕 Return to upper menu or previous program played.
- 〔AUDIO〕 Audio switch and left/right channel
- 〔MUTE〕 Mute control
- 〔TV/RADIO〕 TV/RADIO switch
- 〔FAV〕 Enter channel/Fav list via the “OK” button
- 〔TEXT〕 Teletext
- 〔EPG〕 Go to EPG function
- 〔INFO〕 Display program information
- 〔SUBTITLE〕 Subtitle Display
- 〔MENU〕 Enter main menu
- 〔CH+/-〕 Choose Up / Down channel
- 〔EXIT〕 Exit to the menu or escape from current item
- 〔VOL+/-〕 Volume adjusting
- ▲ / ▼ / ◀ / ▶ OK. Menu navigation keys –  
UP/DOWN/LEFT/RIGHT/CONFIRM
- 〔REC〕 Enter Record Mode
- 〔USB〕 Into USB menu
- 〔PLAY/PAUSE〕 Press to Play/Pause program
- 〔STOP〕 Stop
- 〔PREV & NEXT〕 play previous & next USB Media
- 〔REV & FWD〕 speed up & down while USB Media playing
- 〔COLOUR〕 Use to navigate between pages in teletext mode.
- 〔REPEAT〕 set repeat mode
- 〔AD〕 adjust the hearing

## NOTE – AD (AUDIO DESCRIPTION)

Audio description is an optional additional narrative of on-screen visuals, usually inserted between dialogue. When AD is available you will hear normal audio plus the descriptions. When AD is not available you will hear normal audio. AD is available on TV One and TV Two. This feature is designed to assist vision impaired people and is a service offered by some broadcasters.

## SET UP AND BASIC OPERATION GUIDE

---

### Default Password

At certain times in the operation you may be asked for a password to gain access to a menu function. The default password is 0-0-0-0

### Remote Control

Battery Installation – Fit the two batteries supplied to the remote control following the polarity directions located inside the battery compartment.

### Battery Safety

Do not mix old and new batteries. Always replace both batteries if changing. Use only Alkaline (recommended) and always use batteries of the same type and make. Dispose of any batteries as per the manufacturers instructions. Do not incinerate.

### Initial Set Up Installation

#### Step 1

- Connect the set-top box as per the options shown under CONNECTION GUIDE.
- Using the SOURCE button on your existing TV select HDMI or AV depending on your connections from the Set-Top Box to your TV. This will be the SOURCE channel for the Set Top Box viewing.

#### Step 2

- Switch the power on to the set-top box and press the STANDBY ON/OFF button on the set-top box remote control. A GREEN LED will be displayed indicating the unit is ON. The display on your TV should now show the signal from the set-top box.

#### Step 3

- On initial installation an **initial installation menu** will be displayed (refer picture). This menu will be displayed only once and is not generally the menu used post first up settings.
- This menu displays the required initial settings (OSD Language, Country, Time Zone, Active Antenna, LCN and Start Search functions).
- The settings are set at factory for NZ other than the START SEARCH settings.
- Using the UP/DOWN/LEFT/RIGHT buttons navigate around the MENU to the **START SEARCH** setting and press OK.
- An automatic search and store will commence for all available programs in your area.
- Press **EXIT** to exit the menu. You are now ready to watch FREEVIEW



## Basic Operation

**NOTE:** At any time when you are in the menu mode you can push the "RECALL" button to switch to your previous step/page. To get out of the menu at any stage you can push the "EXIT" button.

In the MAIN MENU guide you are able to change the installation settings, channel settings, preferences, settings, AV settings and to enter GAME mode.

To enter MAIN MENU function, press the MENU button. To exit simply press the EXIT button

In MAIN MENU function you have various options as details below. Most are pre set and do not require alteration.

## Installation Menu

Use the RIGHT/UP/DOWN button to select AUTO SEARCH –MANUAL SEARCH – CHANNEL FILTER – COUNTRY – LCN –ACTIVE ANTENNA

Use the RIGHT/LEFT/UP/DOWN buttons to move around the menu options.

Press OK to confirm.

Press RETURN/EXIT to exit the menu function

## Channel Menu

Press MENU button. Use the UP/DOWN/RIGHT/LEFT/OK buttons to navigate to the CHANNEL page and sub menus. This menu allows for channel deleting, moving, rename, favorite and locking under channel manager. Use the UP – DOWN - RED –GREEN –YELLOW – BLUE buttons to move around the CHANNEL MENU to confirm, Lock, Delete or Rename channels. Once setting has been confirmed press the OK button to confirm and the EXIT button to exit menu.

## Preference Menu

Press MENU button. Use the UP/DOWN/RIGHT/LEFT/OK buttons to navigate to the Preference page and sub menus. This menu allows for some important preference settings. Once setting has been confirmed press the OK button to confirm. Press EXIT to exit.

OSD (means on screen display)

OSD Language – This allows you to select the language displayed

OSD Timeout – This function allows you to select the Time Out setting of the on screen display

OSD Transparency – This setting allows you to adjust the OSD transparency

1<sup>st</sup> Preferred Sub Title – This setting allows you to set the preferred on screen display language

2<sup>nd</sup> Preferred Sub Title – This setting allows you to set the 2<sup>nd</sup> preferred on screen display language

Preferred Tele-Text - This setting allows you to set the desired Tele-Text language

Hard Hearing – This setting allows for those people with hearing difficulties to activate a special sub title (if available).

1<sup>st</sup> Preferred Audio – This setting allows you to select the preferred audio language

2<sup>nd</sup> Preferred Audio – This setting allows you to set the 2<sup>nd</sup> preferred audio language

Multimedia

PVR Config

## Settings Menu

Press MENU button. Use the UP/DOWN/RIGHT/LEFT buttons to navigate to the SETTING MENU and sub menus. This menu allows for Timers, Child Lock, Date Time, Factory Reset, Upgrade, Version and Auto Standby settings.

TIMER (Set Timer by pushing the OK button) - Setting the program TIMER function allows you to set the unit to switch up to 27 pre-programmed channel programs at set times. This allows you to have certain programs automatically change at set times to appear on your screen and also allows you then to set up a recording device to record the channels at these times.

For example you may wish to watch a program on channel 4 at 4pm tomorrow. Under TIMERS you can simply set this option using the DATE/PROGRAM settings under TIMER. At 4pm tomorrow the program will automatically change to this setting.

If you have pre programmed a recording device connected you will be able to record this program.

Up to 27 timer settings are available. Use the UP/DOWN/LEFT/RIGHT/OK buttons to set the desired program recording settings and confirm using the OK button.

Program: Sets the desired program for recording

Start Time: Sets the desired start time

End Time: Sets the desired end time, you must scroll down to the "Type" mode, push the right arrow and change the setting to recorder\*

Duration: Sets the duration length

Mode: Sets the frequency of the timer

Type: Sets the channel type. Select Channel, Recorder VCR.

\*please ensure in Recorder "Type" mode. Enter the length of the recording in the "Duration" mode and this will automatically set the end time, 02:00 relates to 2 hours recording time and push OK. To access the Duration time push the right arrow button on the remote control.



### Child Lock

Allows for child lock to be enabled or disabled. Options are Undefined, Adults Only, Parental Guidance and General. User can change password (Default 0-0-0-0)  
DATE TIME – Allows for AUTO or MANUAL Date/Time zone settings.  
FACTORY RESET – Allows for a return to the factory default settings.  
UPGRADE – Allows the user to update software upgrades directly  
VERSION – Displays to the user the current version details.  
AUTO STANDBY – Allows the user to set the auto shut-off function. Options are OFF – 1 hr – 2 hr – 3hr. Factory default is OFF.

### AV Menu

Press MENU button. Use the UP/DOWN/RIGHT/LEFT/OK buttons to navigate to the AV setting page and sub menus. This menu allows for some important preference settings. Normally these are set by the factory. Once setting has been confirmed press the OK button to confirm. Options include;

CONTRAST – BRIGHTNESS – SATURATION – HUE - SPDIF – ASPECT RATIO - VIDEO OUTPUT - VIDEO RESOLUTION - HDMI COLOUR SPACE - HDMI DEEP COLOR – HDMI Audio

### Game Menu

Press MENU button. Use the UP/DOWN/RIGHT/LEFT/OK buttons to navigate to the GAME page. There are 5 games loaded on this menu.

### TV /RADIO

Press TV/RADIO button to switch between available Radio broadcasts and Freeview programs.

### Recording to a USB Device

When a USB device is connected it is possible to record directly to it. The USB stick or USB hard drive needs to be 2.0 speeds.

Select the program to be recorded  
Press the REC button to commence recording  
Select YES/NO button as desired  
Press OK to commence

Recording will commence

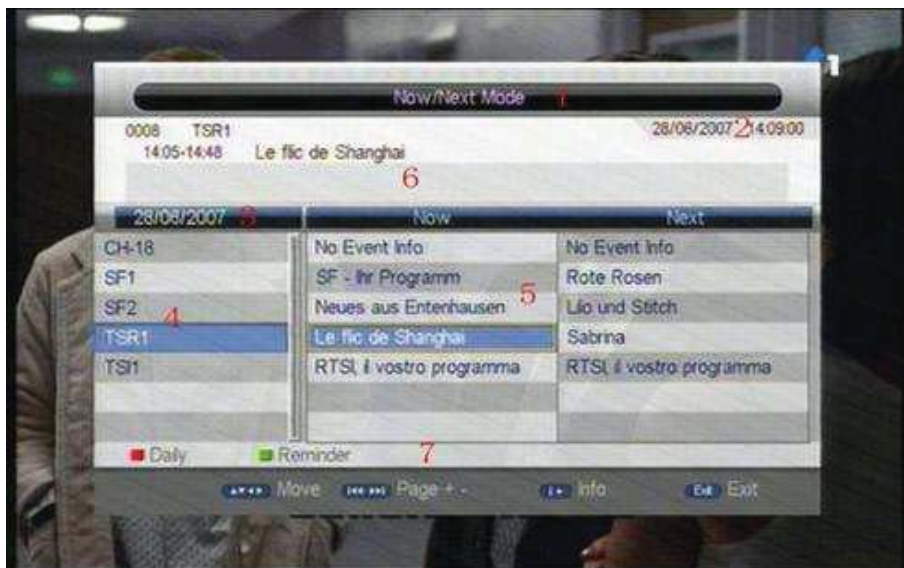
Note if your USB device is not suitable there may be problems with record function and you may require a device with more capability or Speed

Refer to RECORD MANAGER to update or delete programs

### Electronic programs guide (EPG)

Press “EPG” on the remote control to enter into the on screen Electronic Program Guide.

Press down the EPG button for 3 seconds or more and the below screen will be displayed.



Under this feature you can see the current, next day and next week program lists.

Press EPG button once. Display will show the current channel program list and times along with a brief synopsis of each program.

Use the UP/DOWN buttons on the remote to move around the guide.

Use the RIGHT/LEFT buttons to go to the next or previous channel page.

In normal EPG mode use the YELLOW/BLUE buttons to move from NEXT to PREVIOUS day/Week.

Press the EPG button again to enter the full channel guide for all available channels on air at that time.

Press RETURN/EXIT to exit menu.

#### Teletext\* (if available)

Press "TEXT" on the remote to enter into Teletext page



Press page number to select the page number (100-899) to enter the sub menu.

Press page number to enter the page chosen.

Use the RED –GREEN – YELLOW –BLUE buttons to move around the Tele-text functions.

**\*Teletext service is subject to change, the teletext service may be discontinued in 2013 by the service provider.**

#### Subtitles (if available)

Press "SUBTITLE" button on the remote to enter the Subtitle menu. The subtitle text may take a few moments to display text on the screen. Select OFF or ENGLISH using the UP/DOWN buttons and confirm by using the OK button. Press EXIT to return to normal viewing.

#### Multi Media (Record – Movies – Photos – Music – Manager)

Recording from the Set Top Box, Playing or viewing Movies, Music, Photo, Native 32 Game, Recording manager and Disk manager is possible with a USB device with the LORANZ Set Top Box.

Format Supported

MOVIE MODE

Supported file formats are AVI - VOB – DAT

MUSIC MODE

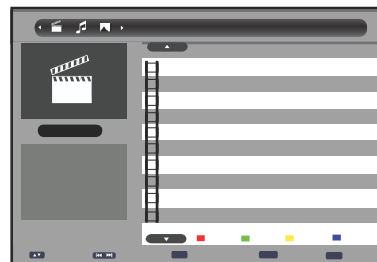
Supported file formats are WMA and MP3 format

PHOTO MODE

Supported file formats are JPG and BMP

NATIVE 32GAME

Supported file formats are Native 32



#### Basic Media Operation

To enter Media mode connect a USB device into the USB Port on the unit. A short message will display showing a device has been found. Press the USB button on the remote control. The main USB MENU will be shown. Use the remote control buttons to navigate around the Menu, Folders / Sub Files as below

To move along the main menu at the top of the MENU bar press the RIGHT/LEFT buttons

To enter a folder on the SUB MENU press the UP/DOWN buttons to highlight the desired folder.

Press the OK button to enter. If the file is supported by the system press OK to commence PLAY /VIEW.

Press STOP to stop the playback.

Press the RETURN/EXIT (RECALL) button to return to the main menu bar.

Press RETURN/EXIT to exit the USB/ function.

In RECORD MANAGER press the RED/GREEN/BLUE buttons to Delete, Rename or Delete All files.

In DISK MANAGER press the RED/GREEN/BLUE/YELLOW buttons to Delete, Rename or Delete All files.

### Media Remote Function Guide

- PREV – Press to view the previous
- NEXT – Press to view the next
- PLAY – Press to play
- PAUSE – Press to pause
- STOP – Press to stop
- FWD – Press to fast forward
- REV – Press to reverse
- RECALL – Press to stop and show menu
- OK – Press to enter the folder or file
- INFO – Shows the file information (if available)
- YELLOW – In photo mode will display thumbnail menu
- UP/DOWN/LEFT/RIGHT – In photo mode press to rotate the image

### Channel Manager

Channel Manager menu page includes channel deleting, moving, locking and rename.



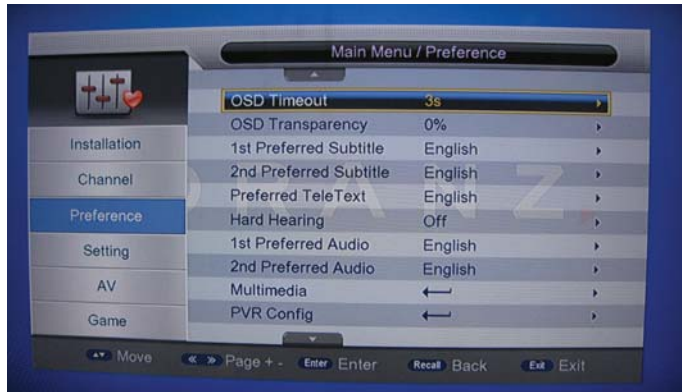
### Favorite List

Select MAIN MENU / CHANNEL / FAVOURITES LIST as shown below.  
Using the UP/DOWN/RIGHT/LEFT buttons and the colour buttons shown select or delete favorite channels.



To access your favorite channels, when you are in your program broadcast, you can push the "OK" button, the channel list will appear, you can press the left-click or right-click button and your favorite channel lists you selected will appear.

## Multimedia



### PVR Configuration (Personal Video recording) – under Main Menu>Preference>PVR Config

It contains options as follows

PVR File Format - Either of options, TS/PS

File Size - Any of options, 4G/3G/2G/1G/Auto, can be selected to set the size of the file to be recorded

Time shift - Any of options, AUTO/OFF/ PAUSE, if AUTO is selected, time shift operation will perform automatically on the background, if OFF is selected, times shift operation will stop; if PAUSE is selected, time shift operation will be Manually started by Pause key

Time shift Length - Any of options, AUTO/30min/1h/2h, can be selected to set the time depth of the time shift

Time shift to Record - Either of options, ON/OFF, can be selected.



## Timers

Up to 27 timers are supported.

Settings

Date: Specifies the timer date

Program Name: Specifies the channel for which the timer is set

Start time: Specifies the start time of the timer

End time: Specifies the end time of the timer, you must scroll down to the "TYPE" mode and change the setting to recorder.

Duration: Specifies the duration time of the timer, please ensure in Recorder "Type" mode. Enter the length of the recording in the "Duration" mode and this will automatically set the end time. 02:00 relates to 2 hours recording time.

Mode: Specifies the frequency of the timer. Duration can be any of the following:

Once -timer will be triggered only once.

Daily-timer will be triggered daily at the specified time.

Weekly -timer will be triggered every week at the specified time.

Monthly-timer will be triggered every Monthly at the specified time.



### Child Lock

Password to enter is 0000.

User can set the system lock to Enable or Disable, and also user can set the parental rating.

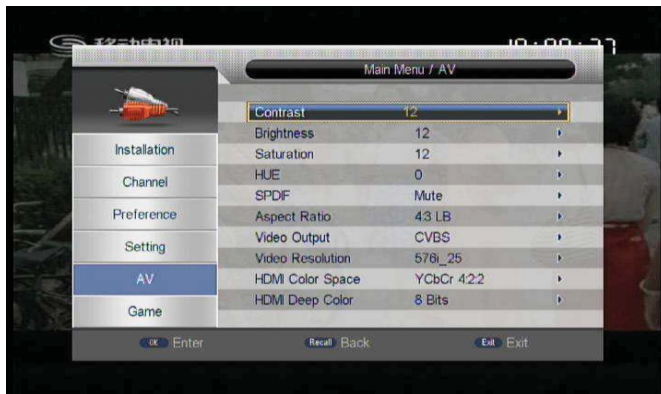
### Date Time

If the "Time Mode" is set to "Auto" then, "Time Zone" shall be active for editing. If the Mode is "Manual", Time Zone will be disabled.

If the "Time Mode" is set to "Manual" then, "Date" and "Time" shall be active for editing. If the Mode is "Auto", these options shall be disabled.

### Factory Reset

There will be Reset to default when this option be selected. The system will hint to input "0000"; to set factory Reset



### Contrast

Contrast can be set from 0 to 24

### Brightness

Brightness can be set from 0 to 24

### Saturation

Saturation can be set from 0 to 24

### HUE

Hue can be set from -30 to 30

### SPDIF

Used to select AVC mode –Mute,PCM and Bitstream

### Aspect Ratio

Aspect Ratio can be set as 16: 9, Full Screen

### Video Output

Video Output mode can change the mode of video output,about CVBS and YUV

### Video Resolution

Video Resolution can be set as 480p\_60,480i\_30,576p\_50,576i\_25, 720p-60, 720p\_50, 1080i\_30, 1080i\_25, 1080p\_60, 1080p\_50, Auto Detect

**HDMI Color Space**

HDMI Color Space can change the mode of video output, you can adjust TV mode according to the actual mode of you receiving equipment.

**HDMI Deep Color**

HDMI Deep Color can change the mode of video output, you can adjust TV mode according to the actual mode of you receiving equipment.

**HDMI Audio**

HDMI Audio can be set as HDMI Mute ,HDMI PCM,HDMI RAW

**Game**

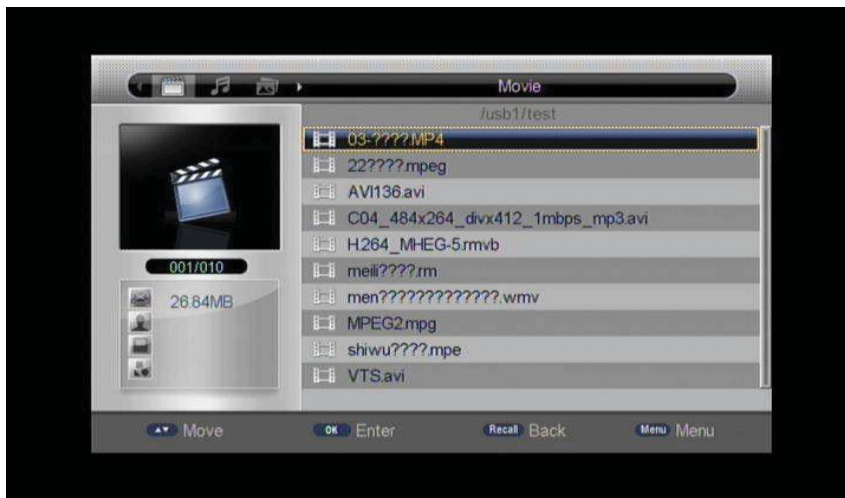
Games provided include Box Man, Tetris, Hit Rat, Go Bang, Sudoku.



## Multi-Media Movie

### MOVIE

Supported file formats AVI, VOB (MPEG 2 coding), DAT (MPEG 2 coding), WMV, MPG, depending on your file quality it should be supported



### Movie playback Guide

Key Stroke	Action
KEY_PREV	Shall stop this movie and play the previous movie in the list.
KEY_NEXT	Shall stop this movie and play the next movie in the list.
KEY_PLAY	play movie and show play icon.
KEY_PAUSE	If the movie is playing, then this will pause and show pause icon
KEY_STOP	Stop the movie and show the layout
KEY_FWD	Fast forward the movie.
KEY_REV	Fast reverse the movie.
KEY_RECALL	The same as the key KEY_STOP
KEY_MUTE	TV mute shall be toggled.
KEY_VOLUME	Change the volume
KEY_INFO	Display information of the playing movie
KEY_RED	Switch to Zoom function, you can press KEY_REV and KEY_FWD to zoom in and zoom out

## Music

Supported format options are WMA, MP3, WAV depending on your file quality it should be supported

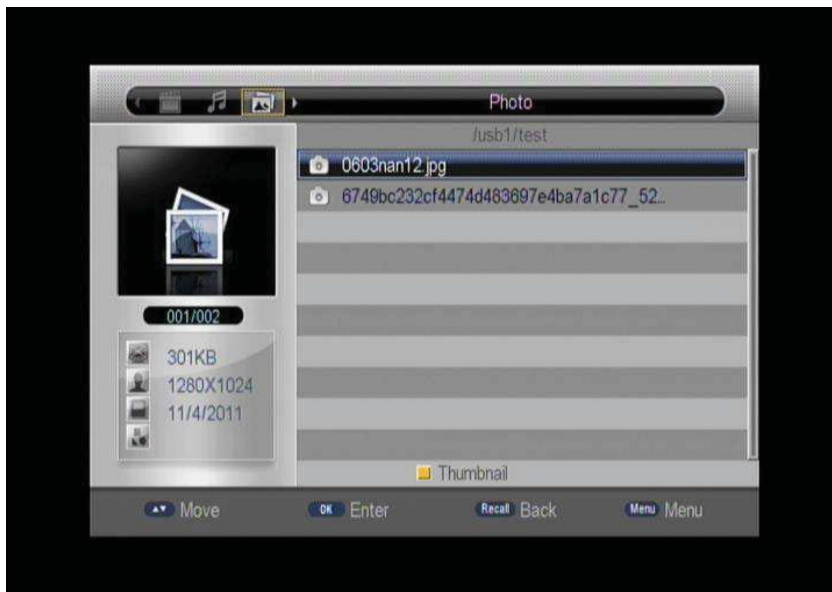
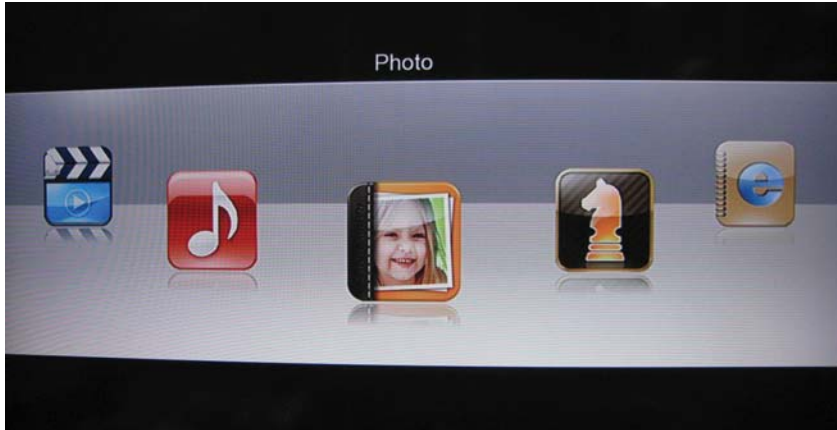


Key Stroke	Action
KEY_PREV	play the previous music
KEY_NEXT	play the next music
KEY_PLAY	play current music
KEY_PAUSE	pause music
KEY_STOP	stop the music
KEY_FWD	fast forward the music
KEY_REV	fast reverse the music
KEY_NUM	the highlight shall change to the corresponding item according to the input number.



## Photo

Supported file formats JPG (does not support CMYK), TIF (does not support tiled image or TIFF extensions), PNG, BMP (does not support compression mode), depending on your file quality it should be supported



### Photo Key Guide

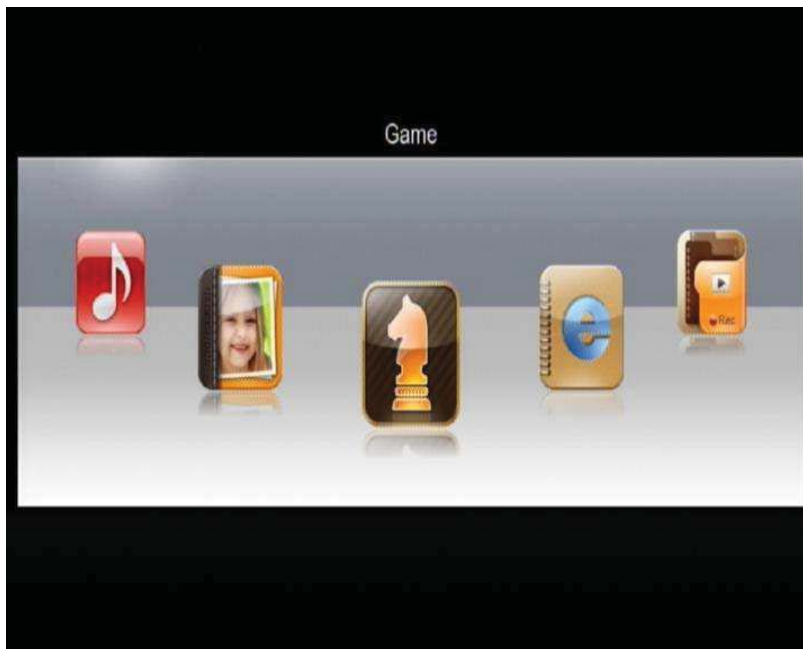
Key Stroke	Action
KEY_ENTER	Press the key will play the selected photo.
KEY_RECALL	Press KEY_RECALL shall return from file list to filter selection mode.
KEY_NUM	The highlight shall change to the corresponding item according to the input number
KEY_YELLOW	Press to show thumbnail menu.

## Photo playback Key Guide

Key Stroke	Action
KEY_UP	Shall rotate the image 180
KEY_DOWN	Shall rotate the image 180
KEY_LEFT	Shall rotate the image 270
KEY_RIGHT	Shall rotate the image 90
KEY_PREV	Displays the previous image in the List. If the displayed image is the first one then the key is ignored.
KEY_NEXT	Displays the next image in the List. If the displayed image is the last one then the key is ignored.
KEY_INFO	Shall display the information of the image
KEY_PAUSE	Slide show is paused if pressing the key
KEY_PLAY	Slide show is started to play if pressing the key
KEY_RED	Switch to Zoom function, you can press KEY_REV and KEY_FWD to zoom in and zoom out

## Game

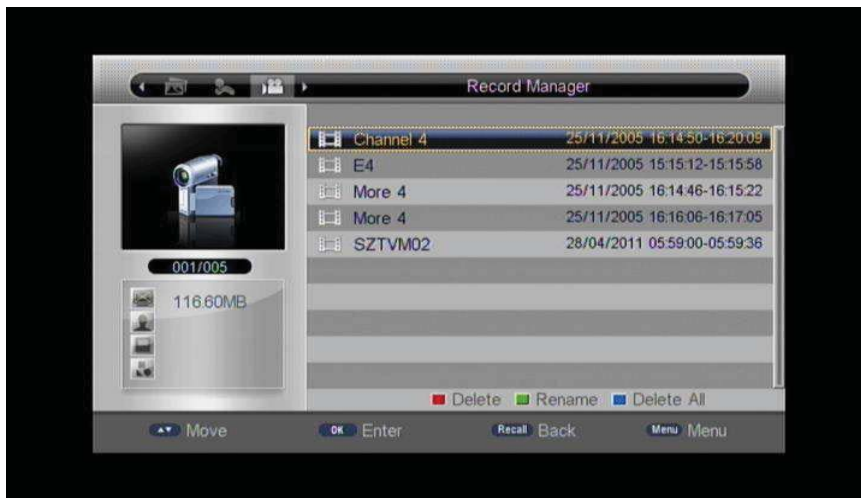
Supported file formats are native32



## Game Key Guide

Key Stroke	Action
KEY_ENTER	press the key will play the selected game.
KEY_RECALL	press KEY_RECALL shall return from file list to the filter selection mode.
KEY_NUM	the highlight shall change to the corresponding item according to the input number
KEY_RED	Change the type of game from native32 to NES

## Recorder Manager



## Record Manager Key Guide

Key Stroke	Action
KEY_ENTER	Press the key to play the selected recorded program
KEY_RECALL	Press KEY_RECALL shall return from file list to the filter selection mode
KEY_RED	Press it will delete the selected item
KEY_GREEN	Press it will rename the selected item.
KEY_YELLOW	Press it will show list files of type
KEY_BLUE	Delete all

## DISK Manager



### Disk Manager Key Guide

Key Stroke	Action
KEY_RED	Show move/copy menu
KEY_GREEN	Show rename menu.
KEY_YELLOW	Delete the selected item

### Move/Copy

In Move/copy menu the user can move file or folder from one side to other side. It also can copy the content at one side to other side.

### E-Book

User can read e-book in \*.txt file



## Software Upgrade

Software upgrades are an integral part of a successful Freeview program.

### OTA UPGRADE (Freeview OVER THE AIR Service)

From time to time a message will display showing an option to upgrade the software on your set. It is recommended that you select YES. This will automatically upgrade your software. It may take a few minutes. Do not switch the power OFF. At the end of the upgrade the unit will automatically have upgraded the software. The unit will need to be re-tuned to receive all of the available channels. Follow the previous set up guide under MAIN MENU/INSTALLATION/AUTO SEARCH to re tune all channels.

### SCHEDULED UPGRADE

The unit can be set to automatically upgrade itself by setting the menu to UPGRADE in Standby or scheduled mode. Press MENU button. Use the UP/DOWN/RIGHT/LEFT/OK buttons to navigate to the SETTING/UPGRADE menu. Press the RIGHT button to enter the OTA upgrade sub menu. Press UP/DOWN/RIGHT/LEFT/OK buttons to set your desired preferences. Press RETURN/EXIT to exit menu



User can copy the upgrade file onto the USB device and plug into the Set Top Box to perform the software upgrade.

## Troubleshooting

There may be various reasons for the abnormal operation of the receiver. Check the receiver according to the procedures shown below. If the receiver does not work properly after checking it, please contact the helpline, website address for Loranz [www.loranz-av.com](http://www.loranz-av.com) or contact the retailer. Don't open the receiver cover, this will be dangerous due to live parts.

Symptom	Cause	Remedy
The LED display on front panel does not light up.	The power cord is not plugged in.	Check that the power cord is plugged in to the wall outlet.
No picture or sound	Wrong connection of the Audio/ Video output of the receiver to TV. Audio muting. TV power off.	Connect the Audio/ Video output of the receiver to TV correctly. Press the MUTE button Turn TV on.
No picture	The receiver can't receive the signal. Incorrect values of some tuner parameters. Wrong direction of the antenna.	Check the antenna cable, replace the cable, or connect the cable to the receiver tightly. Set the values of the tuner parameters correctly in the installation menu. Check the antenna connections.
The remote control does not work	Check the battery installation and power levels	Check whether the batteries are inserted correctly in your remote control. Check the batteries for power, and if exhausted replace the batteries in the remote control.

If you refer to this troubleshooting guide, but doesn't resolve the problem you encountered contact the helpline or check the LORANZ website address [www.loranz-av.com](http://www.loranz-av.com) for technical help.



Electric and electronic equipment and included batteries contains materials, components and substances that can be hazardous to your health and the environment, if the waste material (discarded electric and electronic equipment and batteries) is not handled correctly.

Electric and electronic equipment and batteries is marked with the crossed out trash can symbol, this symbol signifies that electric and electronic equipment and batteries should not be disposed of with other household waste, but should be disposed of separately.

As the end user it is important that you submit your used batteries to the appropriate and designated facility. In this manner you make sure that the batteries are recycled in accordance with legislature and will not harm the environment.

### **IMPORTANT SAFETY INSTRUCTIONS**

When using any electrical apparatus always observe safety regulations and use basic safety precautions to reduce the risk of fire, electric shock and personal injury, including the following.

1. Read, Keep and Follow these instructions, heeding all Warnings.
2. Keep out of reach of young children. This apparatus is not suitable for use by young children or infirm persons without supervision. Young children must be supervised to ensure that they do not play with the apparatus.
3. **WARNING.** Do not insert any objects into any openings of an electrical apparatus.
4. **WARNING.** Do not touch any moving parts of any electrical apparatus.
5. **WARNING!** Where the mains plug or an appliance coupler is used as the disconnect device, the disconnect device shall remain readily operable
6. **WARNING.** Do not use this apparatus near water. To avoid the risk of fire or electric shock, do not expose this apparatus to rain or moisture. The apparatus shall not be exposed to dripping or splashes.
7. **WARNING.** No objects filled with liquid, such as vases, shall be placed on any electrical apparatus.
8. Do not immerse in any liquid whilst in use or in cleaning. Clean only with a damp cloth, dry with a dry towel. Do not use harsh abrasives as these may damage plastic parts.
9. **DO NOT** block any ventilation openings. Keep away from curtains, newspapers and restricted areas. Install in accordance with any specific manufacturer's instructions. Always allow a sufficient gap around the apparatus to avoid overheating.
10. **DO NOT** install near any heat sources such as radiators, gas heaters, stoves or other apparatus (including amplifiers) that produce heat. Do not leave in direct sunlight.
11. **WARNING.** Do not place any naked flame source, such as lighted candles on any electrical apparatus.
12. **WARNING!** Connect to a suitable 100-240V~ 50/60Hz power supply only. If a class 1 product it must be connected to a suitably earthed mains socket.
13. Always unplug from the power source when any electrical apparatus is not in use.
14. Do not abuse or damage a power cord. If any power cord is damaged, it must be replaced by the manufacturer, its service agent or a similarly qualified person in order to avoid a hazard. A replaceable cord must be replaced with an authorised replacement from an authorised service agent only.
15. Only use attachments/accessories specified by the manufacturer.
16. Unplug this apparatus during lightening storms or when unused for long periods of time.
17. Attention is drawn to the environmental aspects of disposing of any battery.
18. Refer all servicing to qualified personnel. Servicing is required when the apparatus has been damaged in any way, such as when the power supply cord or plug is damaged, liquid has been spilled or objects have fallen into the apparatus, the apparatus has been exposed to rain or moisture, does not operate normally, or has been dropped.
19. Do not attempt to service any double insulated apparatus. Double insulated apparatus requires specialist servicing and knowledge to retain the safety of the apparatus.
20. **WARNING.** Do not use any electrical apparatus outdoors. If any electrical apparatus is to be used outdoors, use a suitable Isolating transformer or Electrical Safety Switch (RCD).
21. For household use only, this apparatus is not intended for commercial use.
22. If this apparatus is to be used by a third party, please supply these instructions with it.
23. No liability will be accepted for any personal injury or damage caused by failure to follow these instructions.

### **IMPORTANT INFORMATION - TELEVISION DISPLAY EQUIPMENT**

If a television is not positioned in a sufficiently stable location, it can be potentially hazardous due to falling. Many injuries, particularly to children, can be avoided by taking simple precautions such as:

- Using cabinets or stands recommended by the manufacturer of the television.
- Only using furniture that can safely support the television.
- Ensuring the television is not overhanging the edge of the supporting furniture.
- Not placing the television on tall furniture (for example, cupboards or book cases) without anchoring both the furniture and the television to a suitable support.
- Not standing the television on a cloth or other materials placed between the television and supporting furniture.
- Educating children about the dangers of climbing on furniture to reach the television or its controls

**WARNING: TO REDUCE THE RISK OF ELECTRIC SHOCK, DO NOT REMOVE COVER (OR BACK). NO USER-SERVICEABLE PARTS INSIDE. REFER SERVICING TO QUALIFIED SERVICE PERSONAL ONLY.**