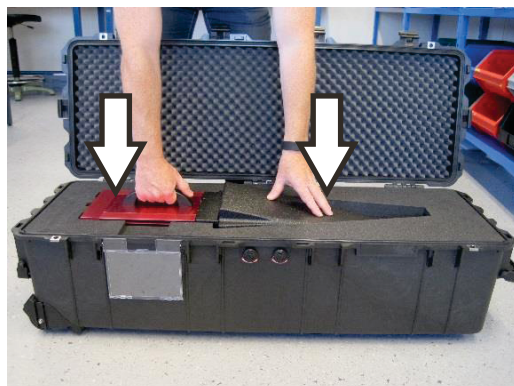


EMField™ Generator Transport Case

(Placing the EMField into the Transport Case, continued from inside page)

4. If required, gently apply light pressure with both hands to seat the EMField evenly in the foam.

Lower the lid and close all latches.



Safety Information



Note: Denotes helpful information intended to provide tips for better use of the product.



CAUTION: Denotes a hazard. Failure to follow instructions could result in minor personal injury and/or property damage. Included text gives proper procedures.



WARNING: Denotes a hazard. Failure to follow instructions could result in SEVERE personal injury and/or property damage. Included text gives proper procedures.



ONLY QUALIFIED PERSONNEL should install, operate, or service this equipment.

For complete safety information, see the *EMField Generator User Manual*.



USA Headquarters

1301 Arrow Point Drive | Cedar Park, TX 78613 | Phone: +1.512.531.6400

Please see www.ets-lindgren.com for a list of all ETS-Lindgren offices.

© Copyright 2015 by ETS-Lindgren Inc. All Rights Reserved. No part of this document may be copied by any means without written permission from ETS-Lindgren Inc.

The ETS-Lindgren logo is a registered trademark of ETS-Lindgren Inc.



For complete product information:

Download the *EMField Generator User Manual* from www.ets-lindgren.com.



WARNING: Failure to use the transport case properly can result in permanent damage to the EMField.

For safety, the **ETS-Lindgren EMField™ Generator** is shipped in a protective transport case. This case is designed for short-distance transporting; for example, between on-site locations or between facilities. The transport case provides foam casing that is custom-designed for the EMField, and the case is watertight and dust-proof. You must use the case when transporting the EMField.



WARNING: The transport case should be placed inside a padded box when shipped to other destinations. The transport case is not designed to be the outer shipping box.

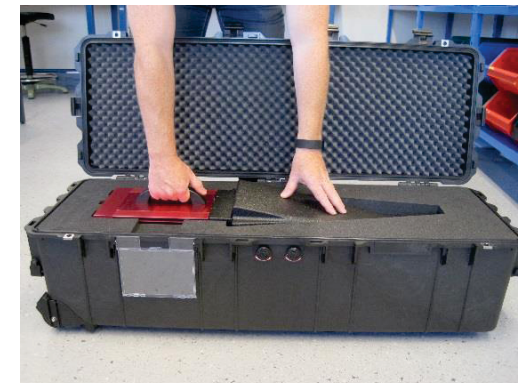


WARNING: When the EMField is stored in the transport case, handle the case with care; permanent damage to the EMField can occur if the transport case is handled roughly.

Removing the EMField from the Transport Case

1. Grasp the handle on the EMField.

(Continue to the inside page of this document for steps 2-4).



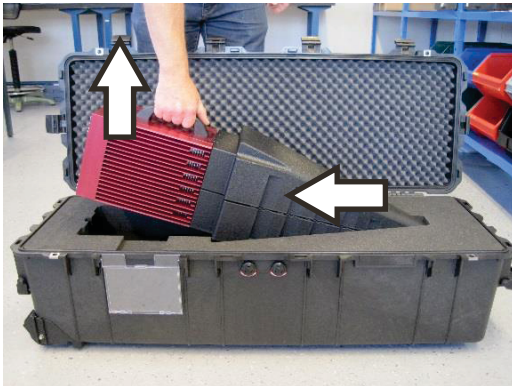
Note: Your EMField model may differ from the model shown in this document.

(Removing the EMField from the Transport Case, continued from front page)

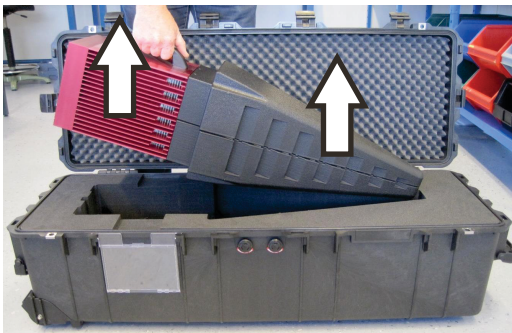
2. Tilt the back end of the EMField upward while keeping the nose in the foam hollow.



3. Continue to raise the back end of the EMField upward while moving the nose toward the back; do not lift the nose straight up.

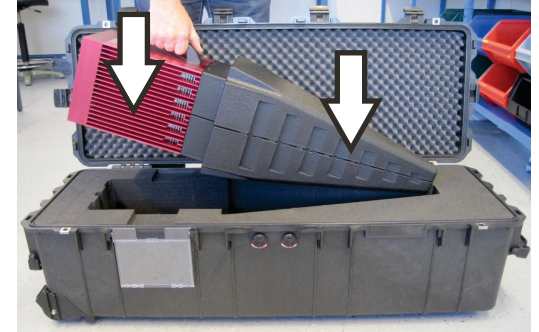


4. Once the nose of the EMField is away from the foam, lift up to remove completely from the case.

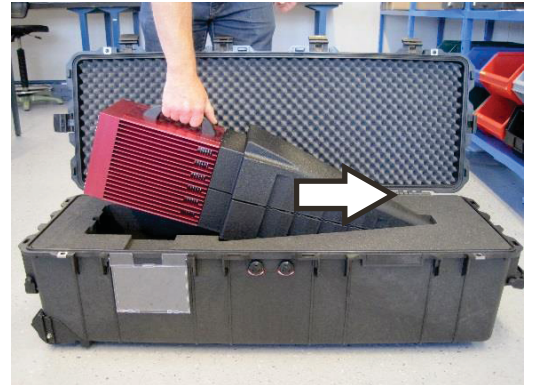


Placing the EMField into the Transport Case

1. Nose first, lower the EMField into the foam in the transport case.



2. With a gentle forward motion, move the nose of the EMField into the foam hollow.



3. With the nose in the foam hollow, lower the back end of the EMField into the foam. Make sure the back end is flush with the foam sides.

(Continue to step 4 on the back page of this document.)

