

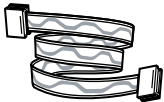
flatwire™

CABLE MODEM USER MANUAL

Thank you for buying FlatWire. This high-performance system enriches the audio and aesthetic quality of all environments. FlatWire can be painted to greatly reduce the visibility of wire on your wall, or completely hidden with mesh tape, concealing compound (mud) & paint. Please read all instructions before initiating your installation.

Please visit www.FlatWireReady.com for additional products, FAQs and technical assistance.

FlatWire Products Required for Installation



x10 or 20 feet of
PWR Series: 1
Pair FlatWire



x1 Custom
Terminator
(2 pieces)



Patch Cord
x1 1 foot
x1 2 foot



x1 DVD



x2
Wall Box



x2 Wall Box
Backplate



x12
Pan Head
Screw



x1 Spray
Adhesive



x1 Mesh
Tape



x1 User
Manual

Tools for Installation



Pencil



Screwdriver



Pliers



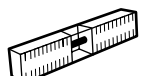
Scissors



Tape Measure

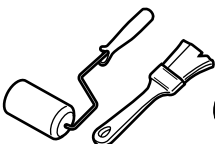


Plastic
Smoother



Level

Tools for Concealment



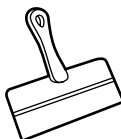
Roller or Paintbrush



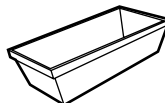
Painter's
Tape



Paint



Compound
Knife



Compound
Tray



Concealing
Compound

Important Safety Instructions

SAVE THESE INSTRUCTIONS

INSTRUCTIONS PERTAINING TO A RISK OF FIRE, OR INJURY

IMPORTANT SAFETY INSTRUCTIONS

- Read all instructions.
- Do not install this surround sound system in a moist or wet location.

Hazards & Warning For FlatWire Ready® Spray Adhesive:

DANGER:

- EXTREMELY FLAMMABLE
- LIQUID AND VAPOR.
- VAPORS MAY CAUSE FLASH FIRES.
- CONTENTS UNDER PRESSURE.
- VAPORS HARMFUL. CAUSES EYE IRRITATION.
- HARMFUL OR FATAL IF SWALLOWED.
- KEEP OUT OF REACH OF CHILDREN. DO NOT TAKE INTERNALLY

DANGER: CONTAINS HEXANE (110-54-3), ACETONE (67-64-1), XYLENE (1330-20-7), METHYL ETHYL KETONE (78-93-3), PROPANE (74-98-6) AND ISOBUTANE (75-28-5). Causes eye, skin, nose, throat and respiratory tract irritation. Vapor harmful. May affect the brain or nervous system causing dizziness, headache, nausea or unconsciousness. Prolonged exposure to skin may cause dermatitis. May be harmful if absorbed through the skin. Prolonged vapor inhalation may result in severe physical injuries. Hexane exposure can cause peripheral nerve damage to arms and legs, which may be permanent. May be toxic to blood, liver, kidneys and reproductive system.

PRECAUTIONARY MEASURES FOR USE, HANDLING, STORAGE AND

DISPOSAL: Vapors may ignite explosively. Vapors may cause a flash fire. Prevent buildup of vapors by providing fresh air such that chemical odors can not be detected during use and while drying. Open all windows and doors. Keep away from heat, sparks and open flames. DO NOT smoke. Vapors may travel long distances to a source of ignition and flash back. Extinguish all flames and pilot lights, and turn off stoves, heaters, electric motors, burners and other sources of ignition and static electricity. Disconnect all appliances during use and until all vapors are gone. Vapors are heavier than air and will collect in low areas. Check all low areas (basements, sumps etc.) for vapor before entering. DO NOT breathe vapors. Odor is not an adequate warning for hazardous conditions. If you experience eye watering, headache or dizziness or if air monitoring demonstrates vapor levels that are above applicable

FlatWire Ready® Spray Adhesive

Cautionary Information Continued

limits, wear an appropriate, properly fitted respirator during use and after application. Follow respirator manufacturer's directions for respirator use. DO NOT get in eyes, on skin or clothing. Wear appropriate gloves to prevent skin contact (neoprene or nitrile). Wear goggles or protective glasses with side shields. Wash thoroughly after handling. DO NOT use or store in direct sunlight. DO NOT expose to heat or store at temperatures above 120°F. Store away from stoves and radiators. Exposure to heat or prolonged exposure to direct sunlight may cause bursting of the can. DO NOT puncture or incinerate (burn) can. Close container after use. See Material Safety Data Sheet for additional information. For a Material Safety Data Sheet contact your supplier or visit www.flatwireready.com.

FIRST AID:

EYE CONTACT: Flush immediately with large amounts of water for at least 15 minutes and get medical attention immediately.

SKIN CONTACT: Wash thoroughly with soap and water.

INHALATION: If you experience difficulty breathing, leave the area to obtain fresh air. If continued difficulty is experienced, get medical attention immediately.

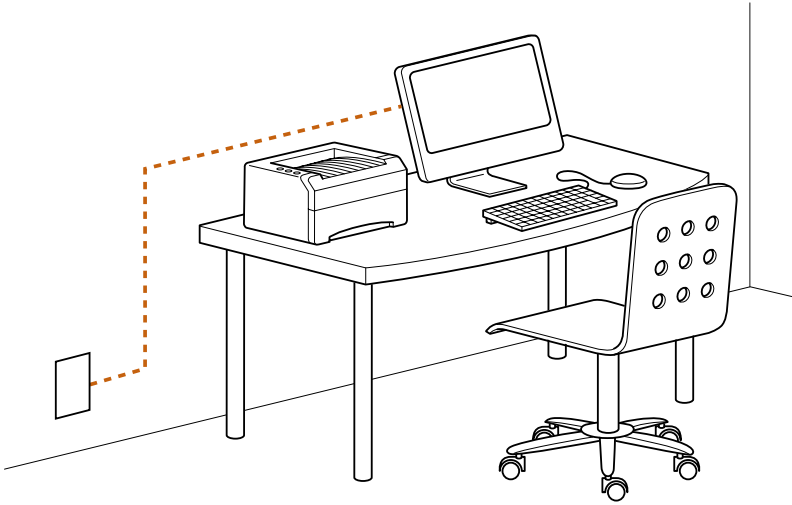
INGESTION: DO NOT INDUCE VOMITING. Call physician immediately.

CALL 1-800-327-3874 IF IRRITATION OR COMPLICATIONS ARISE FROM ANY OF THE ABOVE ROUTES OF EXPOSURE (U.S. and Canada).

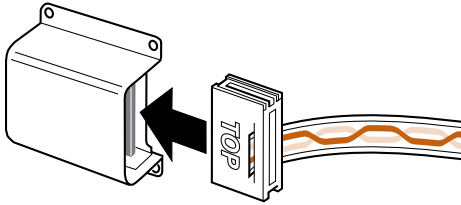
CALL 1-800-535-5053 FOR CHEMICAL EMERGENCIES such as **SPILLS, LEAKS, FIRE, EXPOSURE OR ACCIDENT.**

Installation Instructions

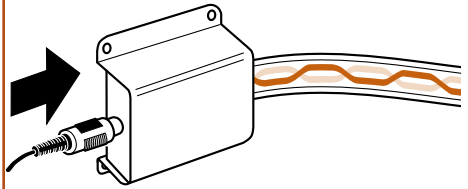
1A : Plan the location of your system elements, and mark the path between the elements that the wire will follow.



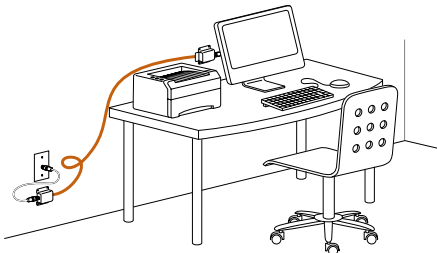
2A : Connect FlatWire: TOP of Terminator faces away from mounting surface



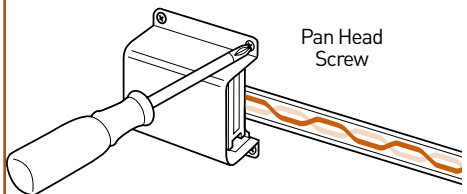
2B : Connect provided patch cord to Wall Box and your components



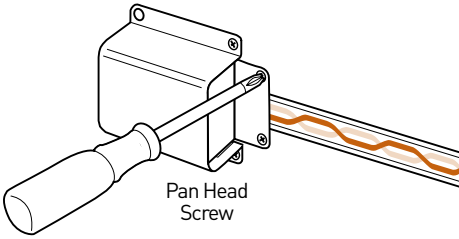
2C : Test components



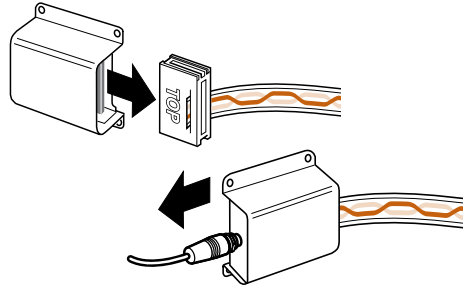
2D : Attach one wall box to mounting surface with 4 screws



2E: Attach wall box backplate to surface with 2 screws

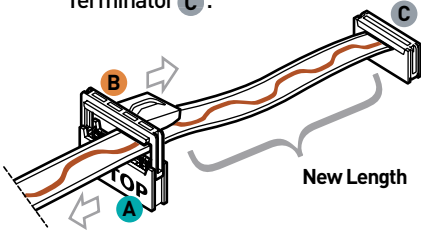


2F: Disconnect patch cords and non-mounted wall box

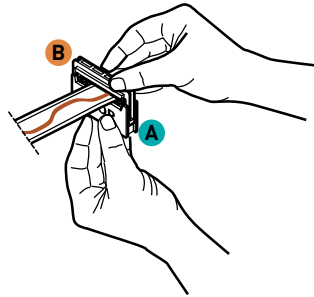


Note: To shorten the wire, follow steps 2.1-2.6. Measure carefully.

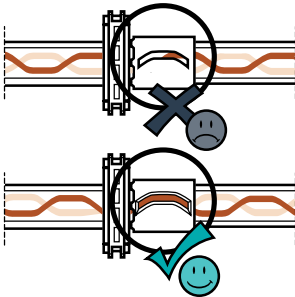
2.1: The Terminator piece printed with "TOP" **A** must face away from the existing Terminator **C**, and sit below the wire. Place the 2nd Terminator piece **B** above the wire with tab pointing along wire towards the existing Terminator **C**.



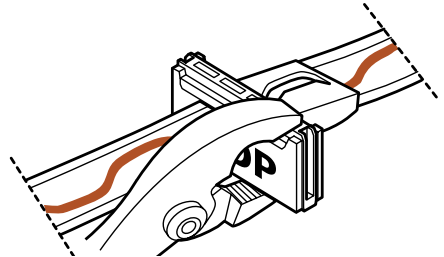
2.2: Click **A** top & **B** bottom of Terminator gently together - do NOT penetrate wire



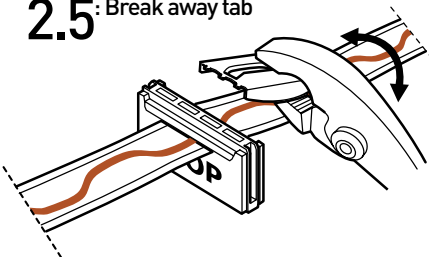
2.3: Check that the wire pattern is aligned through the window of Terminator tab



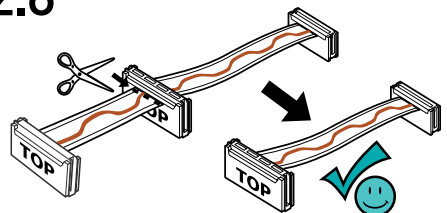
2.4: Clamp Terminator together with pliers



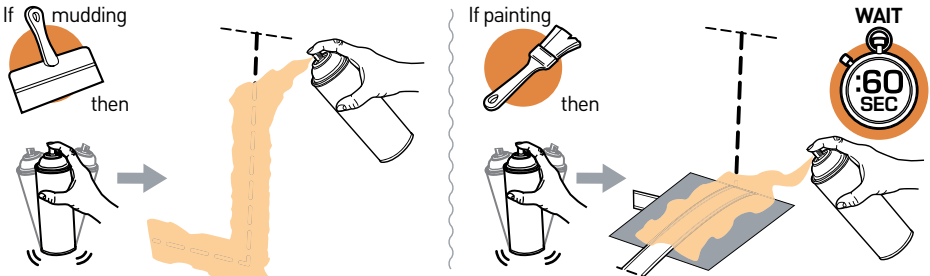
2.5: Break away tab



2.6: Trim excess FlatWire

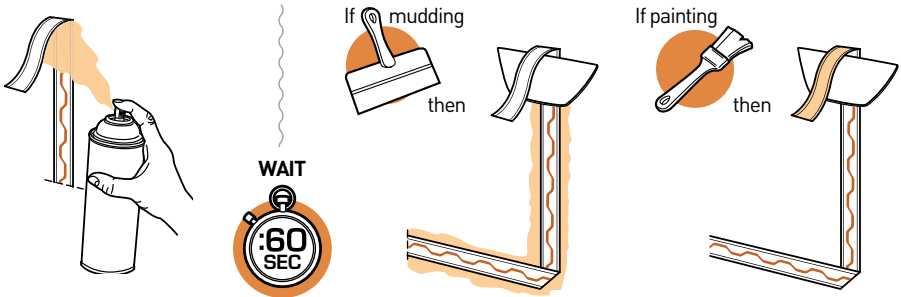


3A : Shake adhesive. Spray adhesive to path for concealment with joint compound, or spray FlatWire directly for concealment with paint. Spray 8' or less at a time. Wait 60 seconds.



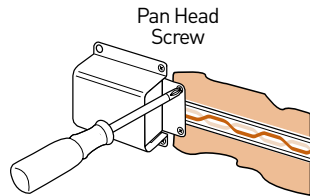
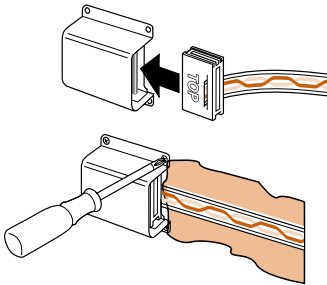
Follow Directions for Use & Cautionary Instructions on Spray Adhesive can.

3B: Press FlatWire to path with smoothing tools



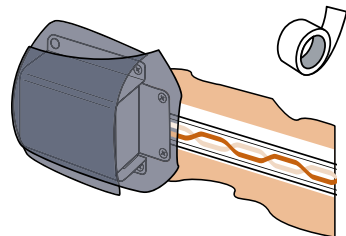
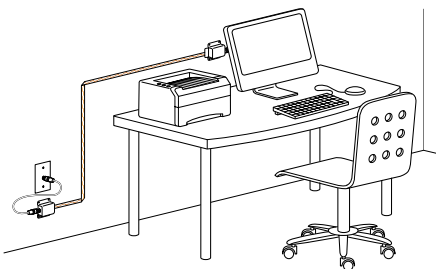
3C: Plug in wire and attach 2nd wall box to mounting surface

3D: Attach wall box backplate to mounting surface



3E: Connect patch cords & test for signal transfer

3F: Disconnect & remove system elements: Cover Wall Boxes with painter's tape

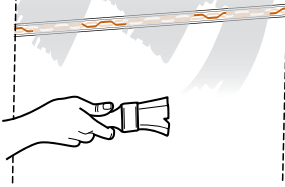


4A: Apply mesh tape over FlatWire (do not overlap the mesh tape), or cover with paint if painting only

If painting



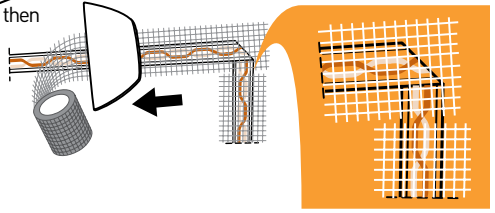
then



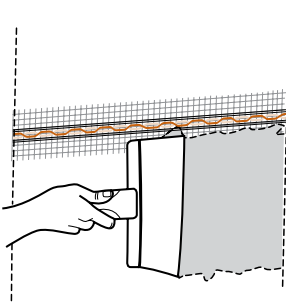
If mudding



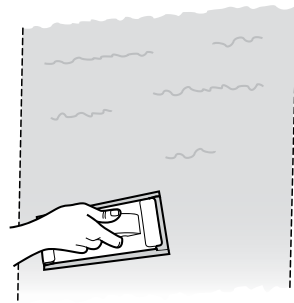
then



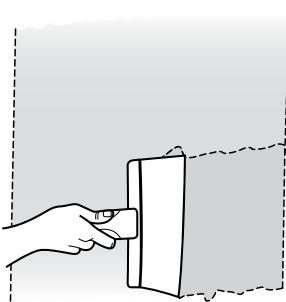
4B: Apply thin & wide layers of concealing compound



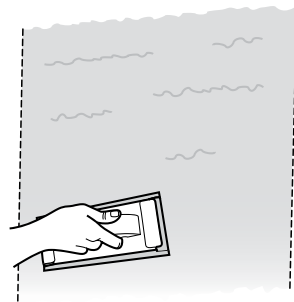
4C: Sand uneven or lumpy areas



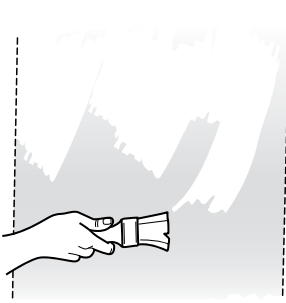
4D: Apply additional layers of compound



4E: Sand until blended with surface



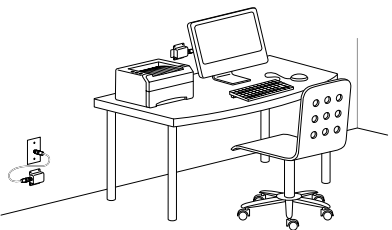
4F: Paint



4G: Reconnect system elements and enjoy!



for Paint & Compound to Cure



Please visit www.FlatWireReady.com for Tips & Tricks as well as FAQs about the product installation.

Troubleshooting: Tips & Tricks

- Clean surfaces of dirt and loose particles
- Work in sections 8 feet or less when adhering FlatWire to surfaces.
- Minimize folds as possible.
- Spray adhesive into folds to avoid air bubbles.
- Don't install FlatWire where you intend to hang pictures.
- Run FlatWire adjacent to molding or trim.
- Insert under chair rail as possible, & when FlatWire runs over chair rail, do not use compound on the chair rail - only paint the FlatWire.
- Avoid layering runs of FlatWire, when possible.
- Consider using textured paint.
- Use a flexible plastic wallpaper smoothing tool for professional results.

For Further Installation Tips & Tricks or Helpful Suggestions, call:

1-888-FLATWIRE

Before Returning this Product PLEASE CALL: 1-888-FLATWIRE



Southwire[®]

Southwire Company
One Southwire Drive
Carrollton, Georgia 30119

www.FlatWireReady.com