

Personalize Your Device

A. Change the Today screen background

Tap **Start** > **Settings** > **Personal** tab > **Today**.

B. Set the date and time

Tap **Start** > **Settings** > **System** tab > **Clock & Alarms** > **Time** tab.

C. Manage power settings

Tap **Start** > **Settings** > **System** tab > **Power** > **Advanced** tab.

D. Enable SIM lock

Enabling the SIM lock requires you to enter a PIN code first before you can use the phone features of your device.

You can enable the SIM lock by tapping **Start** > **Settings** > **Personal** tab > **Phone** and selecting **Require PIN when phone is used**.

E. Set a device password

Enabling the device password requires you to enter a password to unlock the device after it has been left idle for a set period of time.

1. Tap **Start** > **Settings** > **Personal** tab > **Lock**.

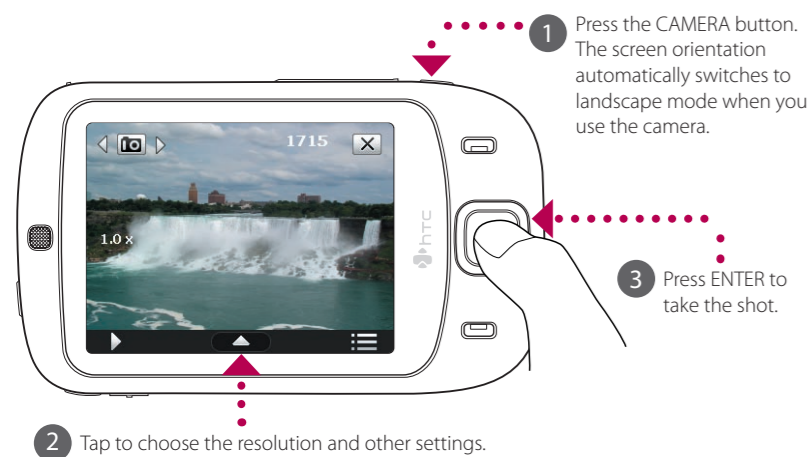
2. Select the **Prompt if device unused for** check box and enter the time you want.

3. Select the **Password** type.

4. Enter and confirm the password, then tap **OK**.

Take a Photo

Use the **Camera** of your device to capture those precious moments.

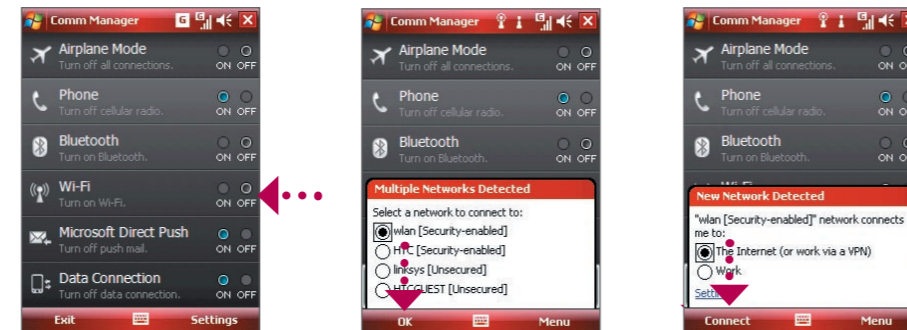


The photo will be saved to the My Pictures folder, unless you choose to delete it (by pressing after taking the photo). Press if you want to send the photo via MMS or e-mail. Refer to the User Manual for more information about using the Camera.

Go Online and Surf the Web

You can use Wi-Fi® to connect your device to the Internet.

Note If there is no Wi-Fi hotspot in your area, you can still connect to the Internet by using the GPRS/EDGE or dial-up service of your wireless service provider. Refer to the User Manual for details.

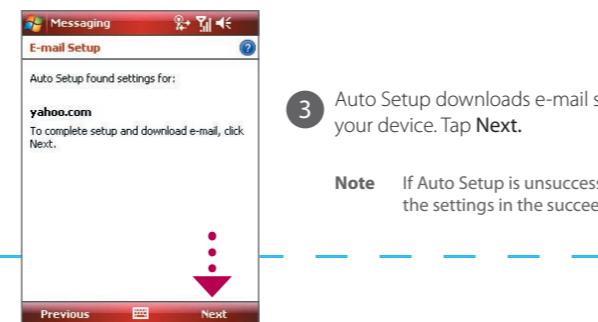
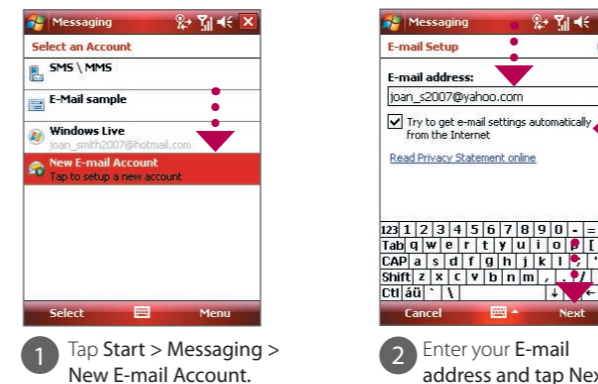


If you are connecting to a secured network, you may need to enter a network key before you can connect to it.

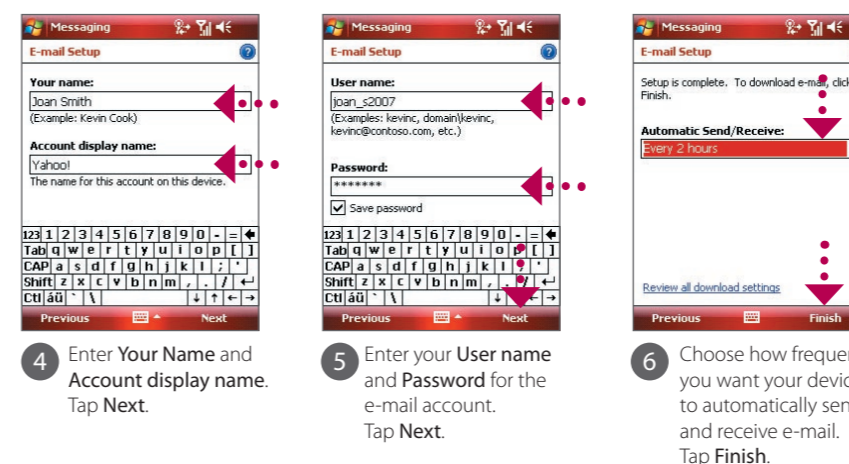
Use Internet Explorer® Mobile (tap **Start** > **Internet Explorer**) to surf the Web.

Get E-mail On Your Device

Get e-mail messages on your device. Set up your device so you can send and receive e-mail messages using your favorite e-mail service.



Note If Auto Setup is unsuccessful, you need to manually enter the settings in the succeeding screens.



You can also synchronize your device with your company's Exchange Server so you can access your company e-mails.

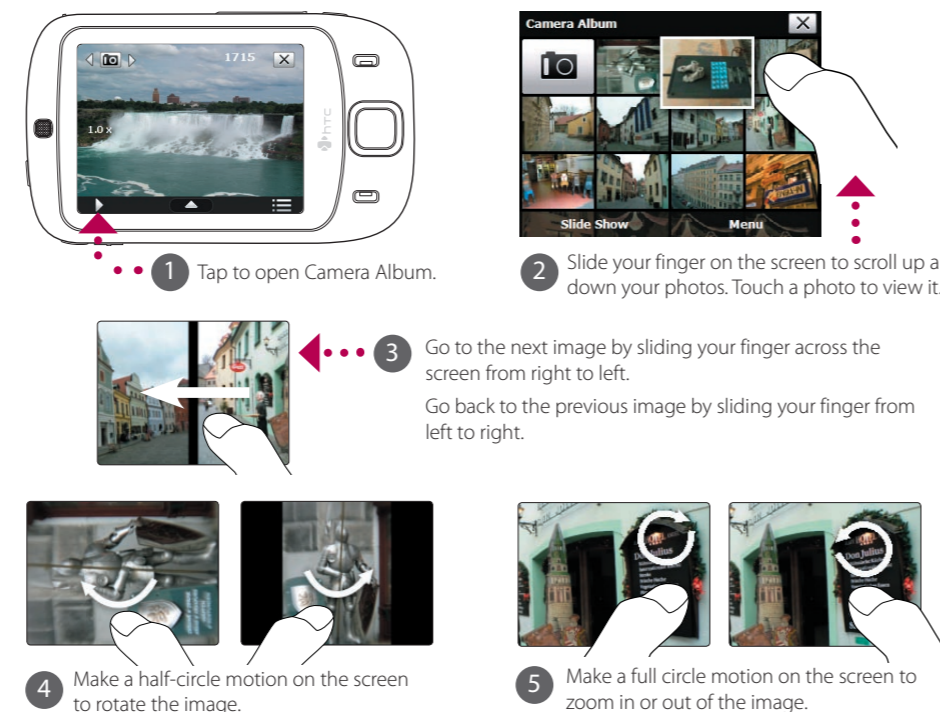
Refer to the User Manual to learn how to get your company e-mails on your device.

HTC TOUCH™ Read Me First

This **Read Me First** will help you get started with using your Windows Mobile® 6 powered device. We recommend that you have this guide handy when you start using your device.

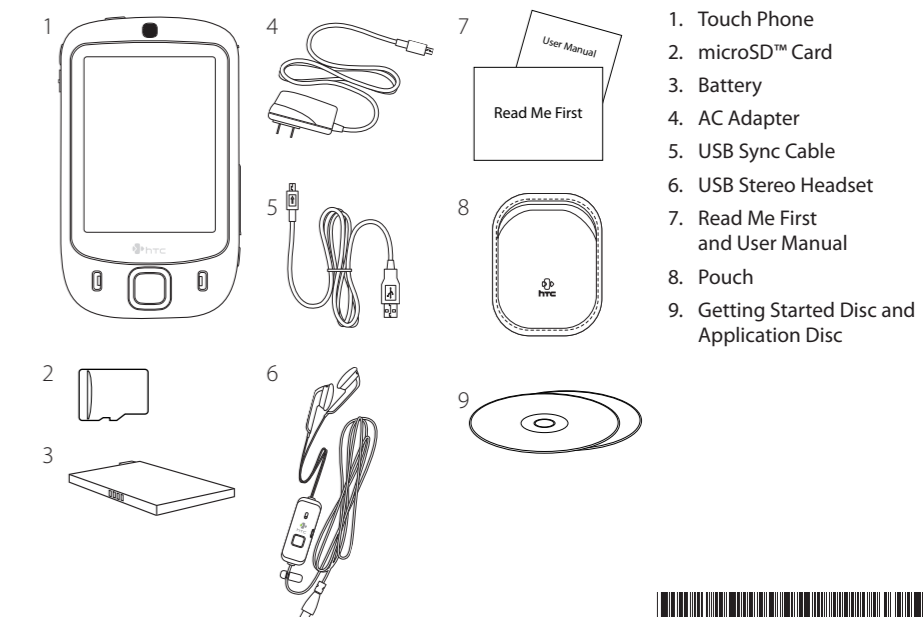
For a more complete reference, consult the User Manual that came with the device.

Use **Camera Album** to view your photos.



What's in the Box

These are the items that you should find inside the box.



www.htc.com

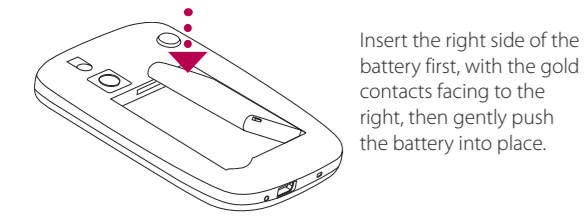


Before Using Your Device

A. Remove the back cover

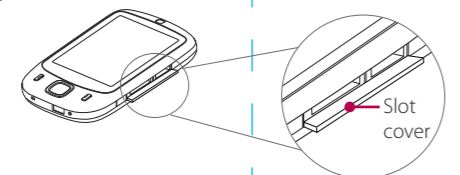


B. Install the battery



C. Install the microSD™ card and SIM card

- 1 Pry open the cover that houses the SIM and storage card slots. To open the cover easier, pry it open from both ends.
- 2 Flip your device so that the touch screen faces upward.
- 3 Hold open the slot cover with one hand.



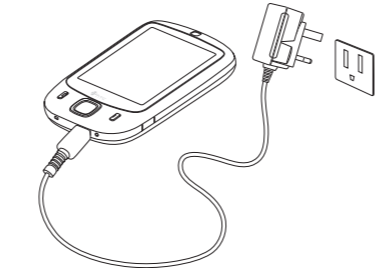
- 4 The upper slot is the microSD slot. Insert the microSD card into this slot with gold contacts facing down.
- 5 The lower slot is the SIM card slot. Insert the SIM card with its gold contacts facing down and its cut-off corner facing toward the inside of the slot.

Note To remove the SIM card or microSD card, press it to pop it out of the slot.

- 6 Replace the back cover.

D. Charge the battery

The battery is not fully charged out of the box. To charge the battery inside your device, connect the AC adapter plug to an electrical outlet and connect the USB end to the Sync connector at the bottom of your device. The battery is fully charged after about 3 hours of charging.



E. Power on/off the device

Press and hold the POWER button for about 3 seconds to power on your device.
When powering off, a confirmation message will be displayed. Tap **Yes** to power off the device.



Make that First Call

- 1 Press the TALK button to open the Phone screen.
- 2 Touch or tap the keys on the Phone screen to enter the first few digits of a phone number or the beginning letters of a contact name.
- 3 The Smart Dialing panel will display the matching phone numbers in Call History as well as the matching contacts found on your device and SIM card. Select the number or contact you want to call then press TALK.



For hands-free phone conversation, connect the USB stereo headset or a Bluetooth® headset (not included) to your device.

To learn how to connect a Bluetooth headset, refer to the User Manual.

Synchronize Your Device and PC

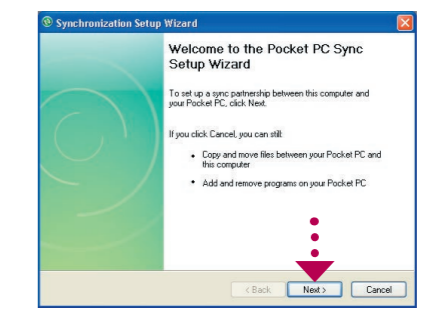
Synchronize your device with your PC to keep information such as Outlook e-mails, contacts, tasks, and appointments up-to-date on your device.

Set up synchronization software on your PC

Depending on the Operating System of your PC, you will need either Microsoft ActiveSync® 4.5 (or later) or Windows Mobile® Device Center to synchronize your device with your PC.

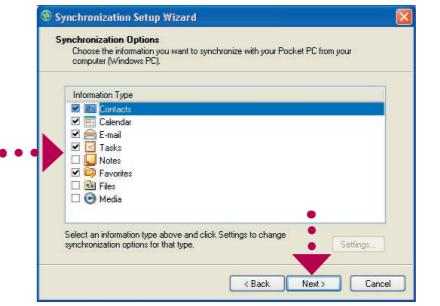
Set up ActiveSync on Windows XP

- 1 Install ActiveSync 4.5 on your PC from the Getting Started Disc.



- 2 Connect your device to your PC. The Synchronization Setup Wizard automatically starts and guides you to create a synchronization partnership. Click **Next** to proceed.

- 3 To synchronize your device with your PC, clear the **Synchronize directly with a server running Microsoft Exchange** check box and click **Next**.

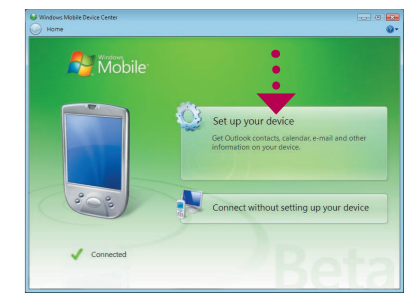


- 4 Select the information types that you want to synchronize, then click **Next**.

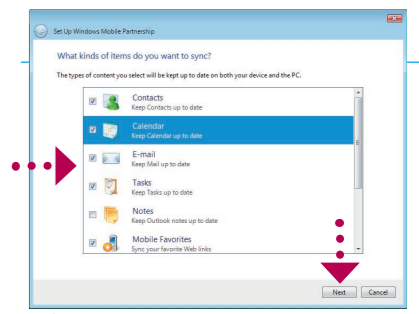
- 5 Choose whether to allow wireless connections while your device is connected to the PC.

- 6 Click **Finish**.

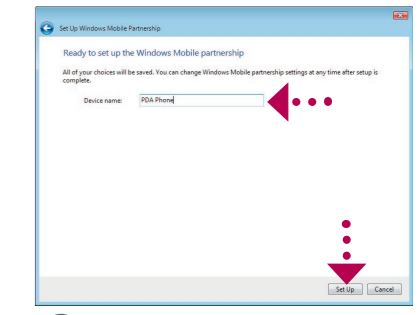
Set up Windows Mobile Device Center on Windows Vista®



- 1 Connect your device to your PC. In Windows Mobile Device Center, click **Set up your device**.

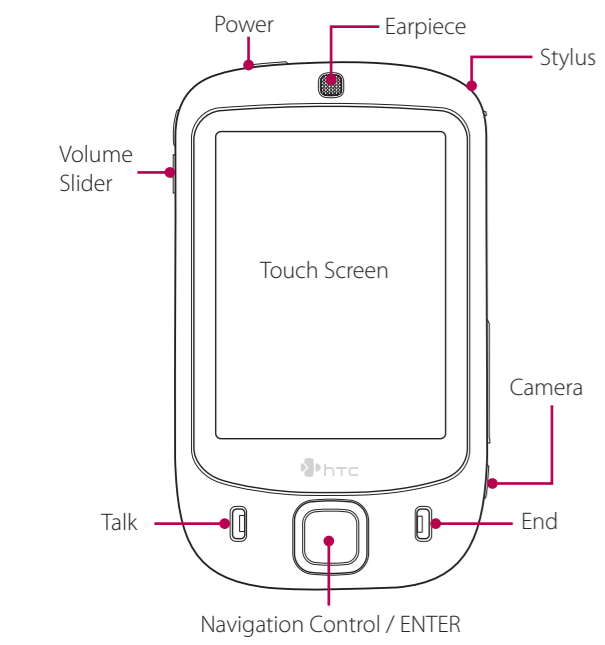


- 2 Select the information you want to synchronize and click **Next**.



- 3 Type in a name for your device and click **Set Up**.

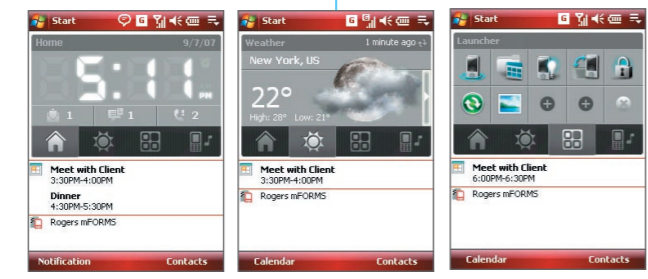
The Touch Phone



HTC Home

HTC Home is a Today screen plug-in that gives you up-to-date local information at a glance, such as time, day and weather information, and shows new messages and missed calls.

It also has a customizable launcher where you can add your favorite applications for one-touch access and a Profile selector where you can quickly change the profile or ring tone of your device.



TouchFLO™

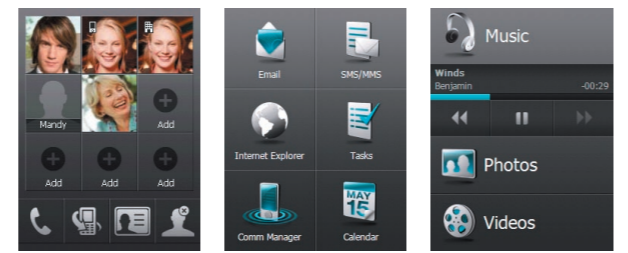
TouchFLO™ gives you better touch panel experience.

A. Touch Cube

TouchFLO features the Touch Cube which allows you to add your favorite contacts, access media, launch programs, and more.



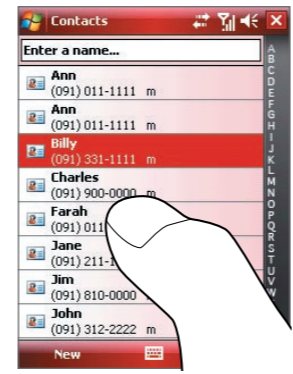
To open the Touch Cube, slide your finger upward, starting from the bottom of the touch screen where it shows a logo image.
To close the Touch Cube, slide your finger downward.



There are 3 sides to the Touch Cube: **Favorite Contacts**, **Launcher**, and **Multimedia**. Slide your finger left or right to flip the Touch Cube.

B. Finger scrolling and panning

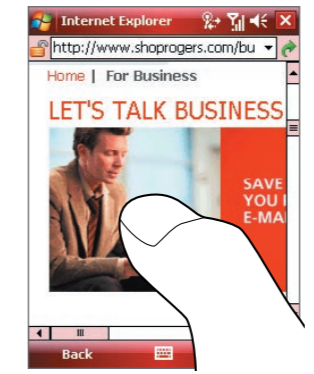
Using TouchFLO, you can also easily scroll and pan the screen by simply sliding your finger on the touch panel.



In Contacts, flick or slide your finger upward to scroll down; flick/slide downward to scroll up.



You can also use the Quick Scroll bar on the right of the Contacts screen for quick scrolling.



To pan a web page, touch and hold on the touch screen and then drag your finger around the screen.
To scroll to the right of the web page, slide your finger to the left. To scroll to the left, slide your finger to the right.