



# Users Manual

*WDF1200C Series Gasoline Generators*

*WDF1200C-EF50*

*WDF1200C-AF50*

*WDF1200C-UF60*



## Warranty Information Do Not Return To Store

One year Limited Manufacturer's Warranty.

Products are not to be returned to retailer

Service is available from a network of providers nationwide

To identify a provider in your area or for warranty information call toll free

866 797 2738

*Read carefully before attempting to assemble, install, operate or maintain the product described. Protect yourself and others by observing all safety information. Failure to comply with the user's manual could result in personal injury and/or property damage! Retain the user's manual for future reference. Call toll free number 866 797 2738 for parts and service.*



## CONTENTS

I. SAFETY INFORMATION	2
II. CONTROL PANEL FUNCTIONS	3
III. PRE-OPERATION PROCEDURES	3
IV. OPERATION	4
V. MAINTENANCE	6
VI. STORAGE	8
VII. SPECIFICATIONS	9
VIII. GENERATOR PARTS DIAGRAM AND PARTS LIST	10
IX. ACCESSORIES	13

*Read carefully before attempting to assemble, install, operate or maintain the product described. Protect yourself and others by observing all safety information. Failure to comply with the user's manual could result in personal injury and/or property damage! Retain the user's manual for future reference. Call toll free number 866 797 2738 for parts and service.*



## **WARNING**

***PLEASE READ AND UNDERSTAND THIS MANUAL COMPLETELY BEFORE OPERATING THE MACHINE.***

## **I . SAFETY INFORMATION**

### **EXHAUST FUMES ARE POISONOUS**

- Never operate the engine in a closed area or it may cause unconsciousness and death within a short time. Operate the engine in a well-ventilated area.

### **FUEL IS HIGHLY FLAMMABLE AND POISONOUS**

- Always turn off the engine when refueling.
- Never refuel while smoking or in the vicinity of an open flame.
- If you swallow any fuel, inhale fuel vapor, or allow any to get in your eyes, see your doctor immediately. If any fuel spills on your skin or clothing, immediately wash with soap and water and change your clothes.
- When operating or transporting the machine, be sure it is kept upright. If it tilts, fuel may leak from the carburetor or fuel tank.

### **ENGINE AND MUFFLER MAY BE HOT**

- Place the machine in a place where pedestrians or children are not likely to touch the machine.
- Avoid placing any flammable materials near the exhaust outlet during operation.
- The machine must be kept at least three feet from buildings and other equipment to allow proper air circulation.

### **ELECTRIC SHOCK PREVENTION**

- Never operate the engine in rain or snow.
- Never touch the machine with wet hands or electrical shock will occur.
- Be sure to ground (earth) the generator with a proper ground wire.

Ground (earth) Lead
Diameter:0. 12mm (0.005in)/ampere
EX: 10Ampere x 1.2(0.055in)

### **CONNECTION NOTES**

- Avoid connecting the generator to commercial power outlet.
- Avoid connecting the generator in parallel with any other generator.

***Read carefully before attempting to assemble, install, operate or maintain the product described. Protect yourself and others by observing all safety information. Failure to comply with the user's manual could result in personal injury and/or property damage! Retain the user's manual for future reference. Call toll free number 866 797 2738 for parts and service.***



## II. GENERATOR CONTROL FUNCTIONS

### ENGINE SWITCH

The engine switch controls the ignition system.

① “ON”

Ignition circuit is switched on.

The engine can be started.

② “OFF”

Ignition circuit is switched off.

The engine will not run.

### AC BREAKER (N.F.B)

The AC breaker turns off automatically when the load exceeds the generator rated output.

### CAUTION:

Reduce the load to within specified generator rated output if the AC breaker (N.F.B) turns off.

### DC BREAKER (N.F.B)

The DC breaker turns off automatically when the load exceeds the generator rated output.

## III. PRE-OPERATION CHECK

### NOTE:

Pre-operation checks should be made each time when the generator is used.

### ! WARNING

The engine and muffler will be very hot after the engine has been run. Avoid touching the engine and muffler while they are still hot with any part of your body or clothing during inspection or repair.

### FUEL

Make sure there is sufficient fuel in the tank.

Recommended fuel: Unleaded gasoline
Fuel tank capacity: 5L



## **WARNING**

- Fuel is highly flammable. Check “ SAFETY INFORMATION” carefully before refueling.
- Do not fill above the top of the fuel fill or it may overflow when the fuel heats up later and expands. Add fuel until level is approximately 1 inch from top of fuel fill.
- After refueling, make sure the tank cap is tightened securely.

## **ENGINE OIL**

Make sure the engine oil is filled to point of overflowing at oil fill cap. Do not overfill. Add oil as necessary.

Recommended oil:

A SAE #30 or 10W-30

Or 10W-40

B SAE #20 or 10W-30

Or 10W-40

C SAE 10W or 10W-30

Or 10W-40

Above 35° C(95° F):SAE #40

Oil capacity: 0.37L

## **GROUNDING**

Make sure to ground the generator.

## **USING THE GENERATOR TO CHARGE A BATTERY**

### **WARNING:**

Battery electrolyte is poisonous and dangerous, causing severe burns, etc. It contains sulfuric acid. Avoid contacting with skin, eyes or clothing.

Battery produces explosive gases. Keep sparks, flame, cigarettes, etc. away. Ventilate when charging or using in closed space. Always cover eyes when working near batteries. Keep out of reach of children.

## **IV. OPERATION**


### **CAUTION:**

The generator has been shipped without engine oil. Fill oil when starting.

*Read carefully before attempting to assemble, install, operate or maintain the product described. Protect yourself and others by observing all safety information. Failure to comply with the user's manual could result in personal injury and/or property damage! Retain the user's manual for future reference. Call toll free number 866 797 2738 for parts and service.*



## STARTING THE ENGINE

- Before starting the engine, do not connect the electric apparatus.
- Turn the AC switch (N.F.B) to “ OFF ”.
  - I Turn the fuel cock lever to “ON”.
  - II Turn the engine switch to “ON”.
  - III Turn the choke lever to the “ |  | ” position. The choke is not required to start a warm engine.
  - IV Pull slowly on the recoil starter until it is engaged, then pull it briskly. Take your hand off the recoil starter immediately after the engine starts.
  - V Warm up the engine. Move choke lever toward the operating position a short distance at a time over several seconds in warm weather or minutes in cold weather. Let engine run smoothly before each change.
  - VI Turn the choke lever back to the operating position.

## CONNECTION

### AC OUTPUT

#### CAUTION:

- Be sure the electric apparatus is turned off before plugging in.
- Be sure the total load is within generator rated output.
- Be sure the socket load current is within socket rated current.
  - I Wind the power lead 2 or 3 turns around frame.
  - II Start the engine.
  - III Plug into AC socket.
  - IV Make sure the pilot light is on or voltage meter indicates the rated voltage.
  - V Turn on the electric apparatus.
- Reduce the load to within specified generator rated output if the AC switch (N.F.B.) turn off.

### DC OUTPUT

Battery charging (if equipped).

Red lead to positive (+), black to negative (-).

#### CAUTION:

This battery charging system is intended to recharge weak batteries, not to “BOOST START” vehicles. Before charging a storage battery, please read the battery in the user’s manual.

## STOPPING THE ENGINE.

- Turn off the electric apparatus.
  - I Disconnect the electric apparatus.
  - II Turn the engine switch to “OFF”.
  - III Turn the fuel cock lever to “OFF”.

*Read carefully before attempting to assemble, install, operate or maintain the product described. Protect yourself and others by observing all safety information. Failure to comply with the user’s manual could result in personal injury and/or property damage! Retain the user’s manual for future reference. Call toll free number 866 797 2738 for parts and service.*



## V. PERIODIC MAINTENANCE

Item	Remarks	Pre-Operation check (daily)	Initial 1 month Or 20 Hr	Every 3 months Or 50 Hr	Every 6 Months or 100 Hr	Every 12 months Or 300 Hr
Spark Plug	Check condition adjust Gap and clean. Replace If necessary.			•		
Engine Oil	Check oil level	•				
	Replace		•		•	
Air Filter	Clean. Replace if Necessary.			•		
Fuel Filter	Clean fuel filter. Re-Place if necessary.				•	
Valve Clearance	Check and adjust when necessary.					•
Fuel Line	Check fuel hose for Crack or damage Re-Place if necessary.	•				
Exhaust System	Check for leakage Retighten or replace gasket if necessary	•				
	Check muffler screen.				•	
Carburetor	Check choke operation.	•				
Cooling System	Check fan damage.					•
Starting System	Check recoil Starter operation.	•				
Decarburization	Clean more frequently if Necessary.					•
Fittings /Fasteners	Check all fittings And fasteners correct if necessary.				•	

*Read carefully before attempting to assemble, install, operate or maintain the product described. Protect yourself and others by observing all safety information. Failure to comply with the user's manual could result in personal injury and/or property damage! Retain the user's manual for future reference. Call toll free number 866 797 2738 for parts and service.*



## ENGINE OIL REPLACEMENT

- I Place the machine on a level surface and warm up the engine for several minutes. Then stop the engine.
- II Remove the oil filler cap.
- III Place an oil pan under the engine. Remove the oil drain plug so that the oil can be completely drained.
- IV Check the oil drain plug, gasket, oil filler cap and “o”-ring. If damaged replace.
- V Reinstall the oil drain plug.
- VI Add engine oil to the upper level.

Recommended oil:

A SAE #30 OR 10W-30 OR 10W-40

B SAE #20 OR 10W-30 OR 10W-40

C SAE 10W OR 10W-30 OR 10W-40

Above 35° C (95F) : SAE #40

## NOTE:

Recommended engine oil classification:

API Service “ SE ” or “SF “; if not available, “SD”.

- Be sure no foreign material enters the crankcase.

## AIR FILTER MAINTENANCE

- Clean regularly washing in a cleaning solvent.
- Do not wring out the element. This could cause it to tear.
- When replacing the filter, be sure the filter’s sealing surface matches the air filter housing so there is no air Leak.
- The engine should never run without the air filter properly installed. Excessive piston And or cylinder wear may result in operating without the air filter properly installed.

## WARNING

Never refuel while smoke or in the vicinity of an open flame.

## SPARK PLUG INSPECTION

Standard electrode color: Tan Color

Spark Plug Gap:0.  
7-0.8mm(0.028-0.031in)

## FUEL TANK FILTER

- ① Clean with solvent.
- ② Wipe off.

*Read carefully before attempting to assemble, install, operate or maintain the product described. Protect yourself and others by observing all safety information. Failure to comply with the user’ manual could result in personal injure and/or property damage! Retain the user’s manual for future reference. Call toll free number 866 797 2738 for parts and service.*





## **WARNING**

Be sure the gas tank cap is tightened securely.

## **TROUBLESHOOTING**

### **ENGINE WON' T START**

#### **1. Fuel systems**

No fuel supplied to combustion chamber.

- No fuel in tank...Supply fuel.
- Clogged fuel line...Clean fuel line.
- Foreign matter in fuel cock...Clean fuel cock.
- Clogged carburetor...Clean carburetor.

#### **2. Electrical systems**

Poor spark

- Spark plug dirty with carbon or wet...Remove carbon or wipe spark plug insufficient.
- Faulty ignition system...Consult dealer.

#### **3.Compression insufficient**

- Worn out piston and cylinder...Consult dealer.
- Loose cylinder head nuts...Tighten nuts properly.
- Damaged gasket...Replace gasket.

## **VI. STORAGE**

Long-term storage of your machine will require some preventive procedures to guard against deterioration.

### **DRAIN THE FUEL**

Drain the fuel tank, fuel cock, and carburetor float bowl.

### **ENGINE**

- I Pour in about one tablespoon of SAE 10W30 or 20W40 motor oil through the spark plug hole.
- II Use the recoil starter to turn the engine over several times (with ignition off).
- III Pull the recoil starter until you feel compression.
- IV Stop pulling.
- V Clean exterior of the generator and apply a rust inhibitor.
- VI Store the generator in a dry, well-ventilated place, with the cover place over it.
- VII The generator must remain in a horizontal position.

*Read carefully before attempting to assemble, install, operate or maintain the product described. Protect yourself and others by observing all safety information. Failure to comply with the user' manual could result in personal injure and/or property damage! Retain the user's manual for future reference. Call toll free number 866 797 2738 for parts and service.*



## VII. SPECIFICATIONS

DIMENSIONS	WDF1200C-EF50	WDF1200C-AF50	WDF1200C-UF60
Overall Length (mm)	460		
Overall Wide (mm)	365		
Overall Height (mm)	390		
Dry Weight (kg)	28		

### GENERATOR:

Model	WDF1200C-EF50	WDF1200C-AF50	WDF1200C-UF60
Type	Single phase, brushless		
Peak power (KW)	1.0	1.0	1.2
Rate output (KW)	0.85	0.85	1.05
Rated speed (rpm)	3000	3000	3600
AC Rated voltage	230	240	115
AC Rated current (AMP)	3.7	3.5	9.1
Rated frequency (Hz)	50	50	60
Power factor COS $\phi$	1.0		
DC Rated voltage	12		
DC Rated AMP	8	8	8

### ENGINE:

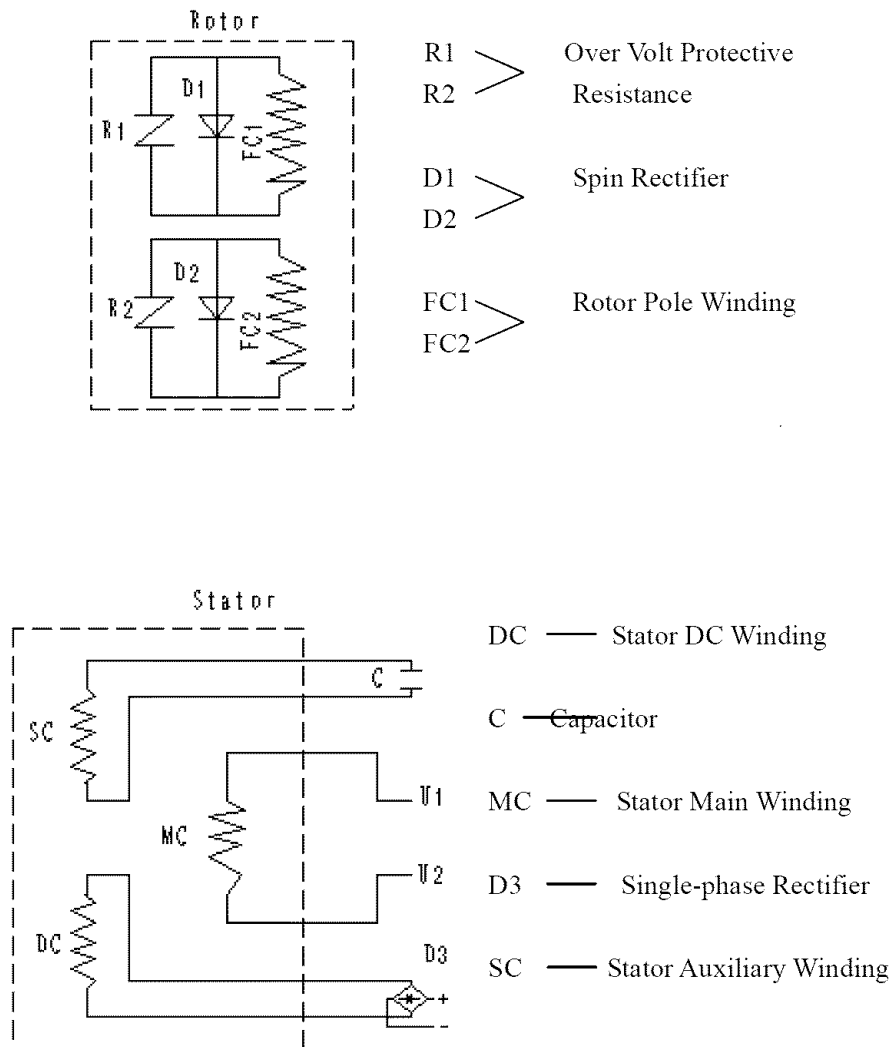
ENGINE	LY152FD-A
Type	Single cylinder, 4-stroke, Forced air cooling
Bore $\times$ Stroke (mm)	52 $\times$ 38
Displacement (CC)	81
Compression Ratio	7.7:1
Max. Output (KW/rpm)	1.70/4000
Lubricate	Mixed oil brume lubrication
Fuel No	90# gasoline
Oil No	Purpose oil for 4-stroke
Starting	Manual starting
Output Mode	Horizontal cone-shaped shaft output
Ignition	T.C.I

- Specifications subject to change without prior notice.

***Read carefully before attempting to assemble, install, operate or maintain the product described. Protect yourself and others by observing all safety information. Failure to comply with the user's manual could result in personal injury and/or property damage! Retain the user's manual for future reference. Call toll free number 866 797 2738 for parts and service.***



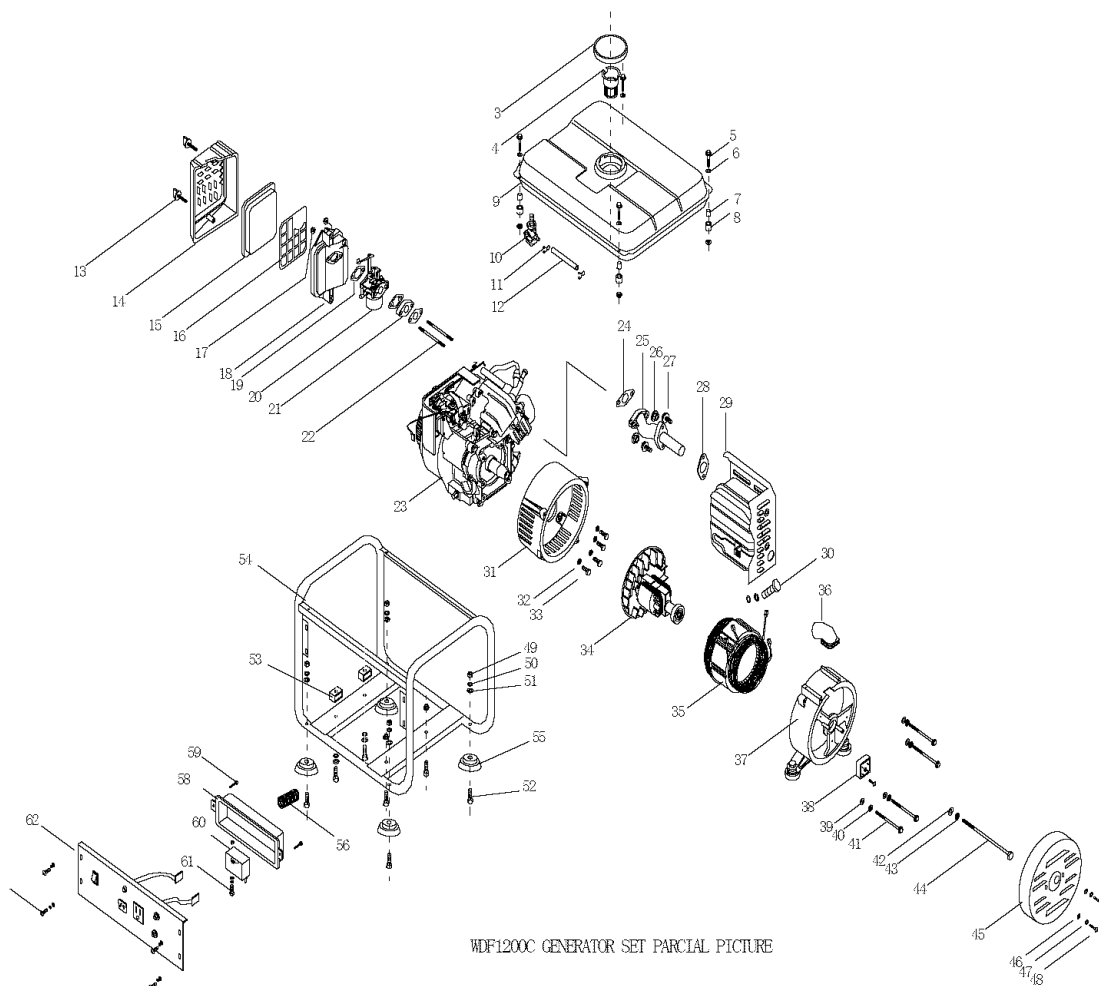
## VIII. GENERATOR SCHEMATIC DIAGRAM



*Read carefully before attempting to assemble, install, operate or maintain the product described. Protect yourself and others by observing all safety information. Failure to comply with the user's manual could result in personal injury and/or property damage! Retain the user's manual for future reference. Call toll free number 866 797 2738 for parts and service.*



## PARTS ILLUSTRATION AND PARTS LIST



*Read carefully before attempting to assemble, install, operate or maintain the product described. Protect yourself and others by observing all safety information. Failure to comply with the user's manual could result in personal injury and/or property damage! Retain the user's manual for future reference. Call toll free number 866 797 2738 for parts and service.*



PARTS LIST		
NO.	DESCRIPTION	QUANTITY
3	FUEL TANK CAP	1
4	FUEL TANK FILTER	1
5	HEXAGON FLANGE BELT M6×25	4
6	GASKET 6	4
7	SCREW GASKET	4
8	ANTI-VIRBRATION GASKET	4
9	FUEL TANK	1
10	FUEL SWITCH	1
11	FUEL PIPE HOOP	2
12	OIL PIPE	1
13	BOLT	2
14	AIR FILTER CAP	1
15	FOAM FILTER	1
16	AIL FILTER CLAPBOARD	1
17	FLANGE LOCKED NUT M6	6
18	AIR FILTER BASE	1
19	SUCTION PIPE SEALED	1
20	CARBURETOR	1
21	SUCTION PIPE	1
22	DOUBLE END BELT	2
23	ENGINE	1
24	EXHAUST PIPE GASKET	1
25	EXHAUST PIPE	1
26	FLANGE LOCKED NUT M8	2
27	HEXAGON FLANGE BELT M6×12	2
28	MUFFLER GASKET	1
29	MUFFLER	1
30	HEXAGON FLANGE BELT M6×12	1
31	FRONT COVER	1
32	FASTEN GASKET	4
33	HEXAGON FLANGE BELT M8×20	4
34	ROTOR ASSY	1
35	STATOR ASSY	1
36	MAGNETO WIRE PROTECT COVER	1
37	REAR COVER	1
38	RECTIFIER	1
39	GASKET 6	4
40	SPRING GASKET 6	4
41	FLANGE BOLT	4

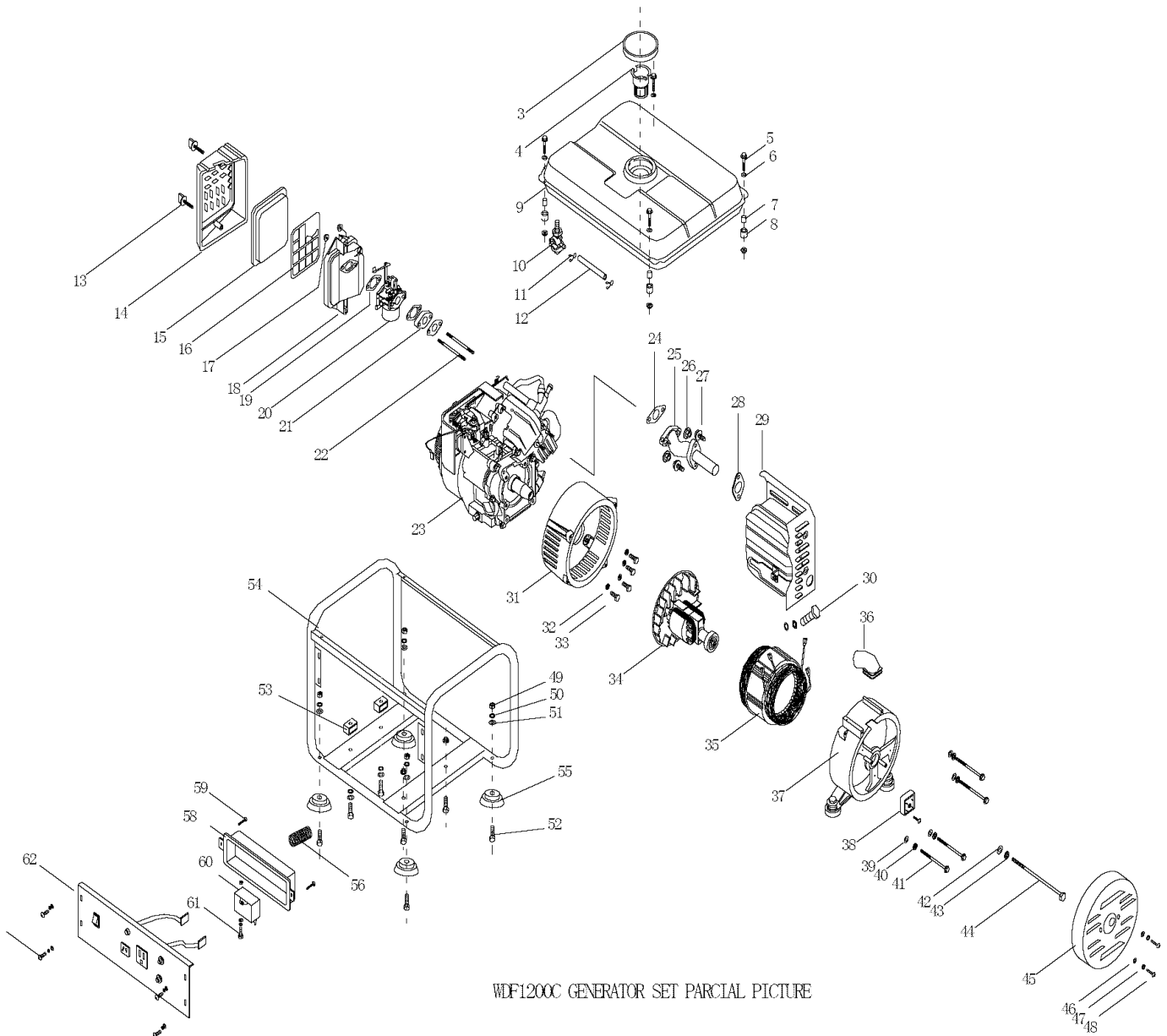
***Read carefully before attempting to assemble, install, operate or maintain the product described. Protect yourself and others by observing all safety information. Failure to comply with the user's manual could result in personal injury and/or property damage! Retain the user's manual for future reference. Call toll free number 866 797 2738 for parts and service.***



PARTS LIST		
NO	DESCRIPTION	QUANTITY
42	GASKET 8	1
43	SPRING GASKET 8	1
44	HEXAGON FLANGE BELT M8×170	1
45	MAGNETO COVER	1
46	GASKET 5	2
47	SPRING GASKET 5	2
48	BOLT M5X8	2
49	FLANGE LOCKED NUT M8	6
50	GASKET 8	8
51	SPRING GASKET 8	8
52	HEXAGON FLANGE BELT M8×40	8
53	CUSHION	2
54	FRAME	1
55	ANTI-VIRBRATION FEET	4
56	FLEX TUBE	1
58	ELECTRIC APPLIANCE BOX	1
59	HEXAGON FLANGE BELT M4×10	2
60	CAPACITOR	1
61	BOLT M4×16	1
62	PANEL	1
63	BOLT M6×25	4

*Read carefully before attempting to assemble, install, operate or maintain the product described. Protect yourself and others by observing all safety information. Failure to comply with the user's manual could result in personal injury and/or property damage! Retain the user's manual for future reference. Call toll free number 866 797 2738 for parts and service.*

# UST



WDF1200C GENERATOR SET PARCIAL PICTURE

**Read carefully before attempting to assemble, install, operate or maintain the product described. Protect yourself and others by observing all safety information. Failure to comply with the user's manual could result in personal injury and/or property damage! Retain the user's manual for future reference. Call toll free number 866 797 2738 for parts and service.**



## IX. ACCESSORIES

- ① User's manual
- ② Spark plug sleeve
- ③ DC lead