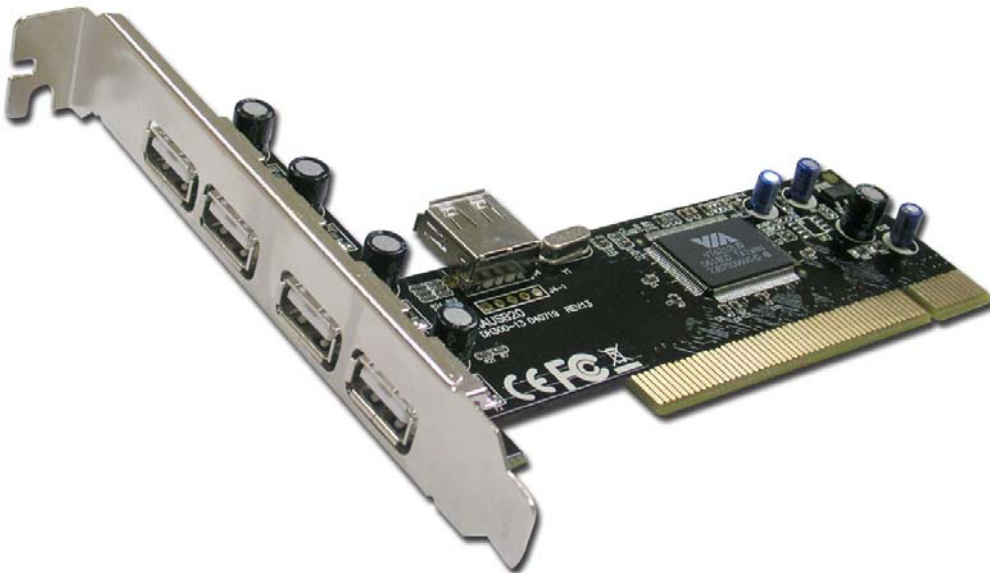


# High Speed USB Adapter

## User Manual

Ver: 1.0



## **Table of Contents**

<b>Chapter 1 Introduction .....</b>	<b>3</b>
<b>1.1 Features.....</b>	<b>3</b>
<b>1.2 Environments.....</b>	<b>3</b>
<b>1.3 Package .....</b>	<b>4</b>
<b>Chapter 2 Installation .....</b>	<b>5</b>
<b>2.1 Installing the USB Card.....</b>	<b>5</b>
<b>2.2 Software Installation .....</b>	<b>5</b>

## **Chapter 1 Introduction**

Congratulations on your purchase of this USB Card . Instructions for installing and configuring this product can be found in this manual. Before you install and use this product, please read this manual carefully for full exploiting the functions of this product.

This card is designed to work with drives, webcams, and other USB enabled devices. At up to 40 times faster than USB card, the five USB2.0 ports can transfer data at 480Mbps. Making it ideal for external storage, backup, networking and video devices.

### **1.1 Features**

- Provide five downstream USB Type A receptacles. (4 External, 1 Internal)
- Compliance with USB2.0 Standards, Backward Compatible with USB 1.0,USB1.1
- Compliance with UHCI 1.1
- Compliance with EHCI 0.95
- Plug-and-Play installation
- Support PCI Revision2.2
- Support simultaneous connection of up to 127 devices by attaching peripherals through interconnected external USB hubs
- Each USB port provides electrical power for devices of up to 500mA
- Provide up to 480Mbps Transfer Speeds
- Support PCI-Bus Power Management Interface 1.1

### **1.2 Environments**

- Storage Temperature: -40° C ~70° C
- Operating Temperature : 0° C ~40° C
- Storage Humidity: 5% ~90% RH Non-condensing
- Operating Humidity: 10% ~90% RH Non-condensing

## **1.3 Package**

- One USB Card
- One Manual
- The U6212 Drives and Manual on CD-ROM

## Chapter 2 Installation

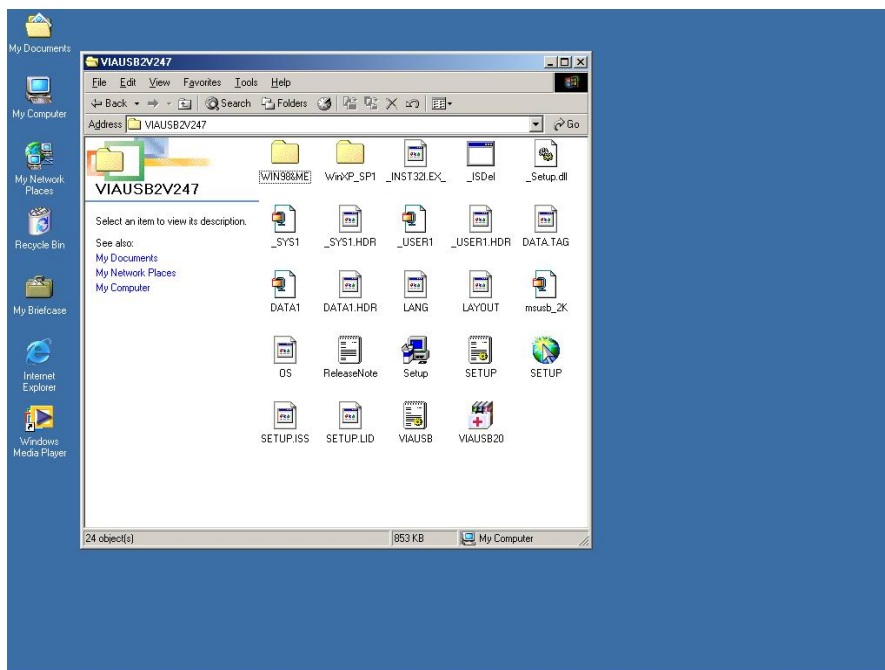
### 2.1 Installing the USB Card

1. Shut down the computer, unplug its power cord, and remove the chassis cover.
2. Insert the contact edge of the USB card into the connector of any available PCI Bus Master expansion slot. Press the card firmly into the connector such that the card contacts are fully seated in the connectors
3. Install the bracket screw that secures the card to the computer chassis.
4. Replace the computer chassis cover.
5. Reconnect the computer power cord, and switch computer power on.

### 2.2 Software Installation

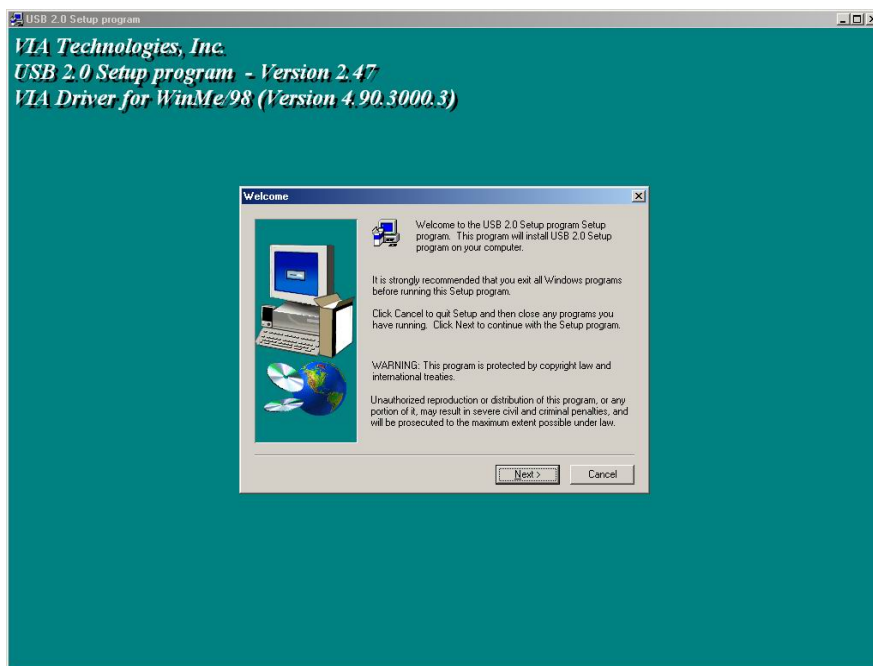
The following instruction set up the LAN card in the computer running windows XP.

1. Put the U6216 CD-ROM into computer's CD driver, Double Click the CD driver. Then the dialog box will appear as follow.

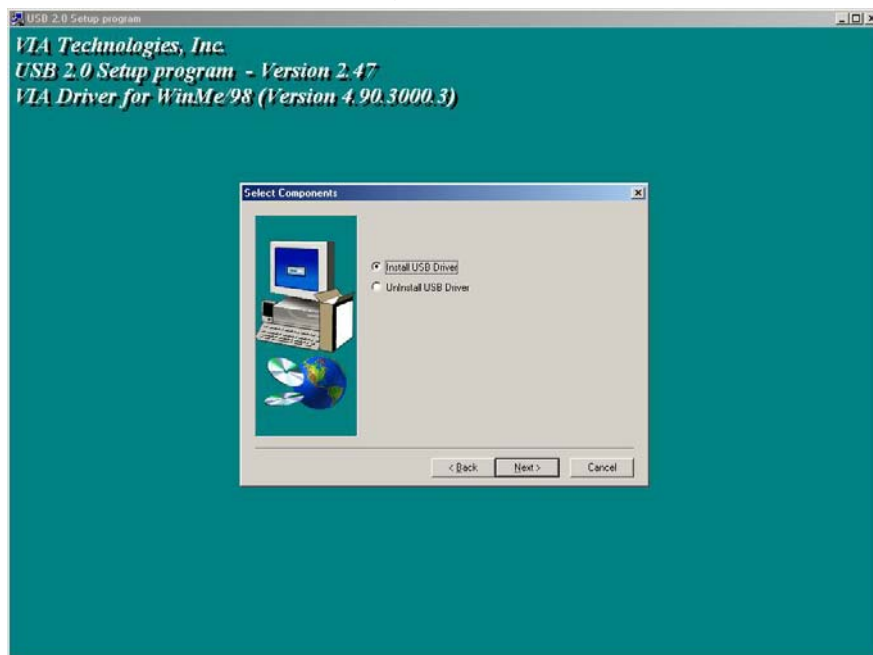


2. Double Click **SETUP.EXE**, an Installation Wizard will guide you through the process.

## 4+1 ports High Speed USB Adapter



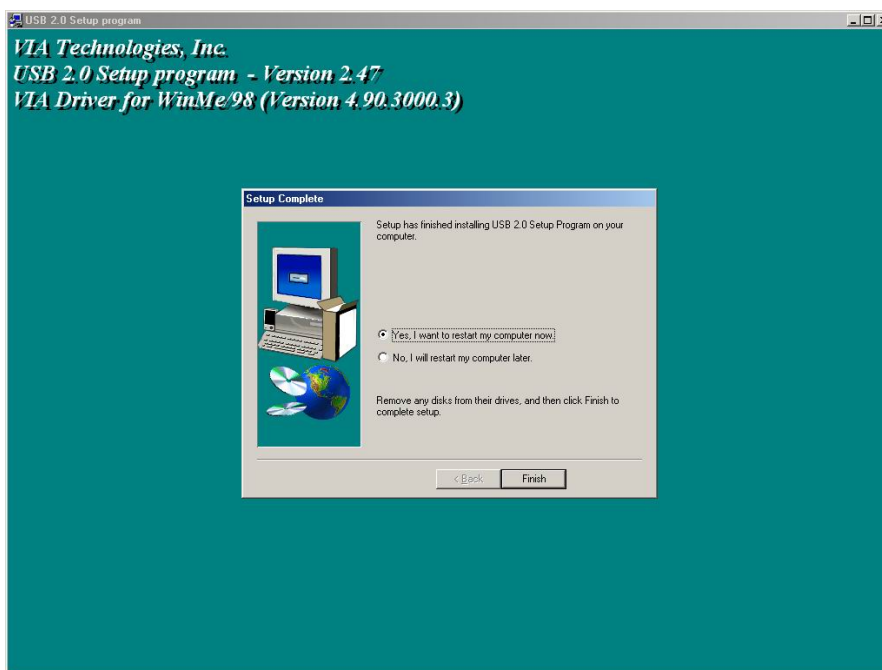
3. Click the **Next** button. The dialog box will appear as follow.



4. Select **Install USB Driver**, then click the **Next** button.

## 4+1 ports High Speed USB Adapter

---



5. Click the **Finish** button, the computer system will be restart.

**Note:** For **Driver Uninstall**, the user can remove the **Microsoft USB 2.0 Host Controller Driver** by selecting the **Uninstall** button. This will completely remove the driver from the system.