



# **BTA-806**

## **Bluetooth Dongle**

User manual, version 0.7



### **Copyright**

© 2005 GlobalSat Technology Corporation. All rights reserved

The trademarks mentioned in this document are legally registered to their respective companies.

# 1. Introduction

Our latest Bluetooth Dongle has been designed and developed specifically for all current Bluetooth devices. The USB Bluetooth 2.0 Dongle combines the latest features with premium levels of quality and reliability. It enables networking products through Bluetooth capable of data transfer among devices such as PDAs, printers, mobiles, computers, and other emerging electronic devices. Compatible with USB 1.1 and 2.0, the BTA-806 supports Windows XP/2000/Me and installs quickly and easily to a desktop or notebook computer with an available USB port.

## 1.1. Package

Before you start up, make sure that your package includes the following items. If any items are missing or damaged, contact your dealer immediately.

- BTA-806 bluetooth dongle
- CD (including the driver)

## 1.2. Features

- Bluetooth v2.0 EDR compliant (Class II)
- Frequency Hopping Spread Spectrum (FHSS) for better connections
- High Speed data transfer up to 3Mbps
- Connects up to 7 BT devices to the PC
- Implements a Personal Area Network (PAN)
- Uses 2.4GHz ~ 2.4835GHz ISM band
- Connection range up to 10 Meters (32 feet)
- Activity indicator LED
- Plug and Play
- L LMP improvements

## 2. Specification

<b>Model Name</b>	<b>BTA-806</b>
Product Description	Bluetooth USB dongle
USB Interface	1.1
Certification	FCC, CE
Bluetooth Version	Bluetooth v2.0 EDR
RF Output Power	Class 2
Frequency	2.4GHz ~ 2.4835GHz ISM band
Spread Spectrum	FHSS (Frequency Hopping Spread Spectrum)
Operating Range	10 meters (32 feet)
Sensitivity	-80dBm @0.1%BER
Bluetooth Profile	SYNC、SPP、HCRP、PAN、OPP、LAP、HID、FTP、FAX、A2DP、AVRCP、DUN、BIP
LED	1 LED
Operation Temperature	-10 °C ~ 55 °C
Storage Temperature	-20 °C ~ 60 °C
Humidity	10% ~ 90% non-condensing
Dimensions	42 * 18 * 8mm (L * W * T)
Power Consumption	Working: 58mA , Stand by: 13mA

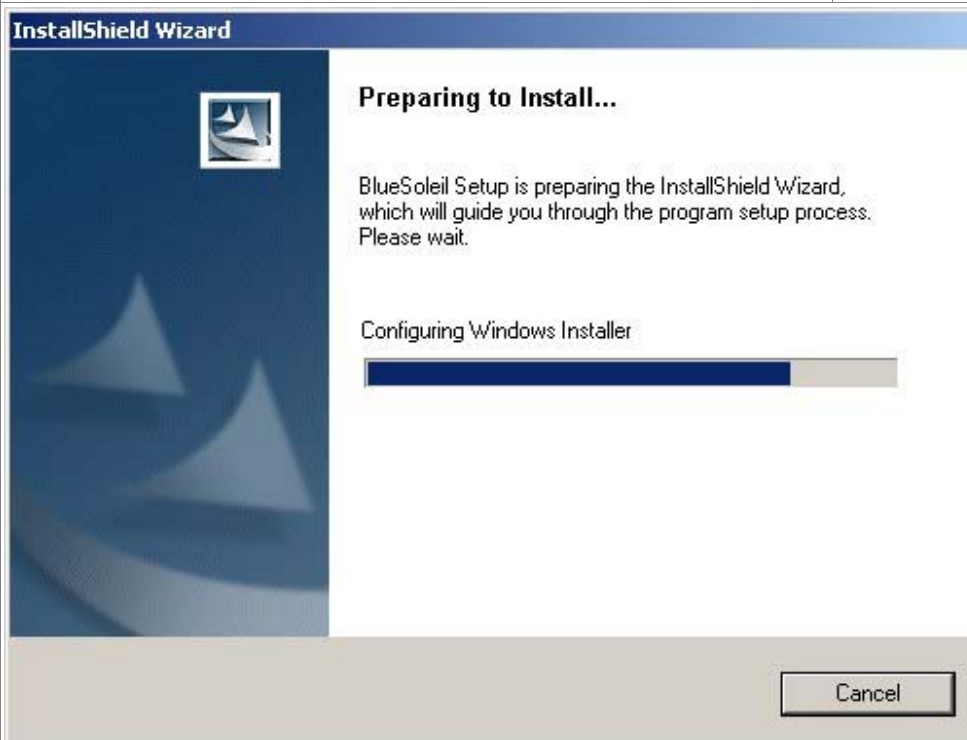
## 3. Installation

### Install the driver

#### Install the driver before you use the Bluetooth dongle



1. Please place the driver CD into CD-ROM drive, the Autorun program will start automatically. Please select the language you want. If the Autorun program does not start, please manually run it by double click on the "setup.exe" from CD root directory.



2. The Autorun program will prepare to install the driver for you.



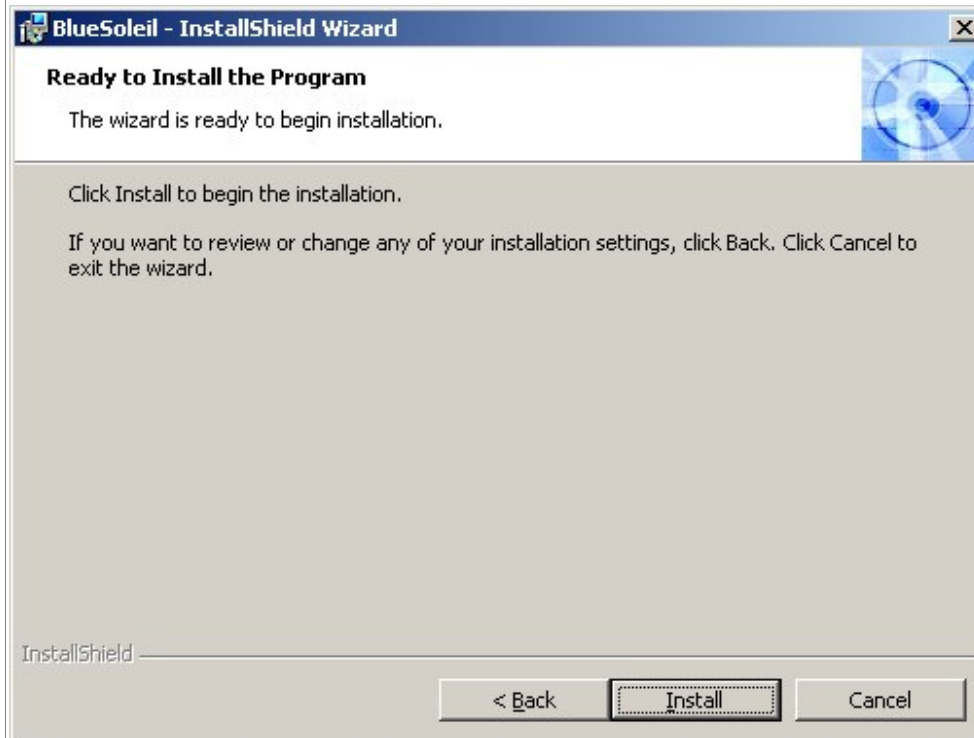
3. Click on **Next** button.



4. Please select "I accept..." and then click on **Next** button.



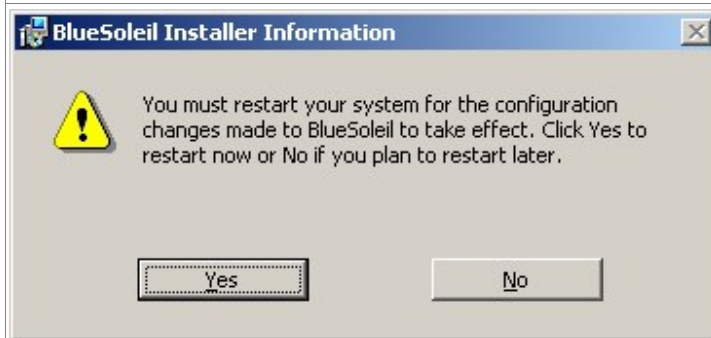
5. If you want to change the destination folder, click on **Change** button, and click on **Next** button to continue.



6. Click on **Install** button.



7. After the installation is completed, please click on **Finish** button.



8. If you want to restart the system, click on **Yes** button.

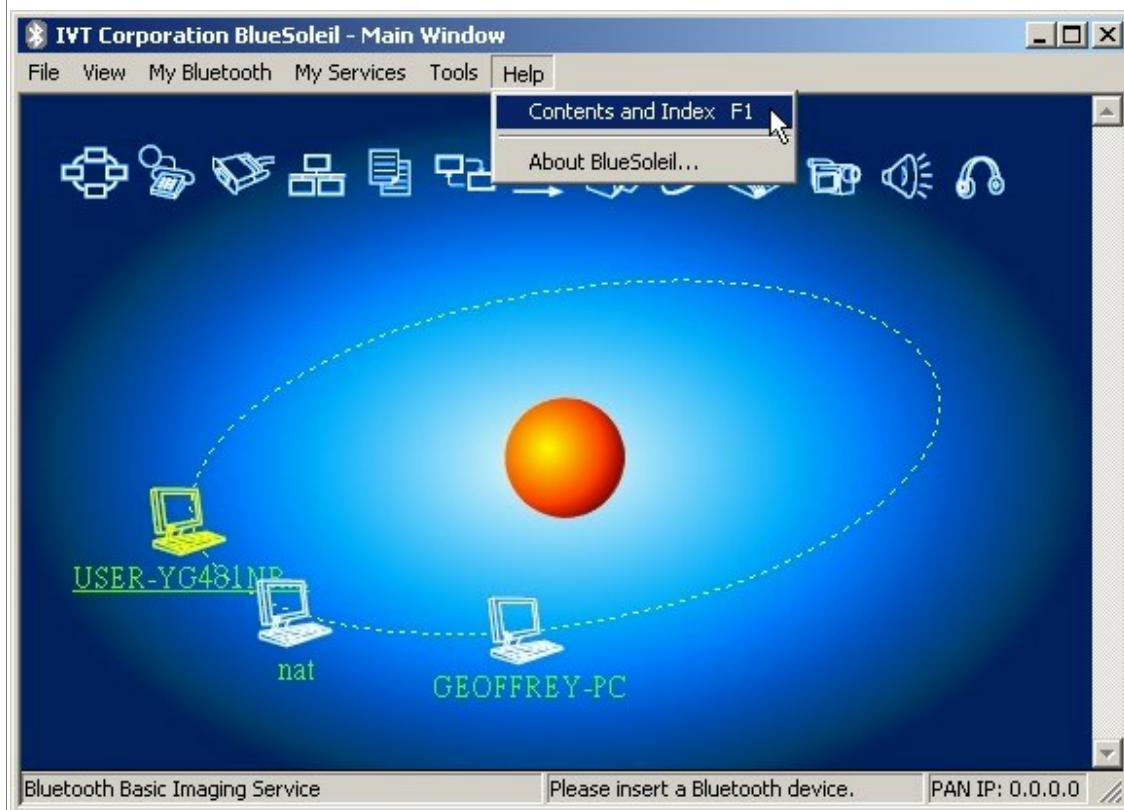
## 4. Start the connection software

### Start the IVT BlueSoleil software



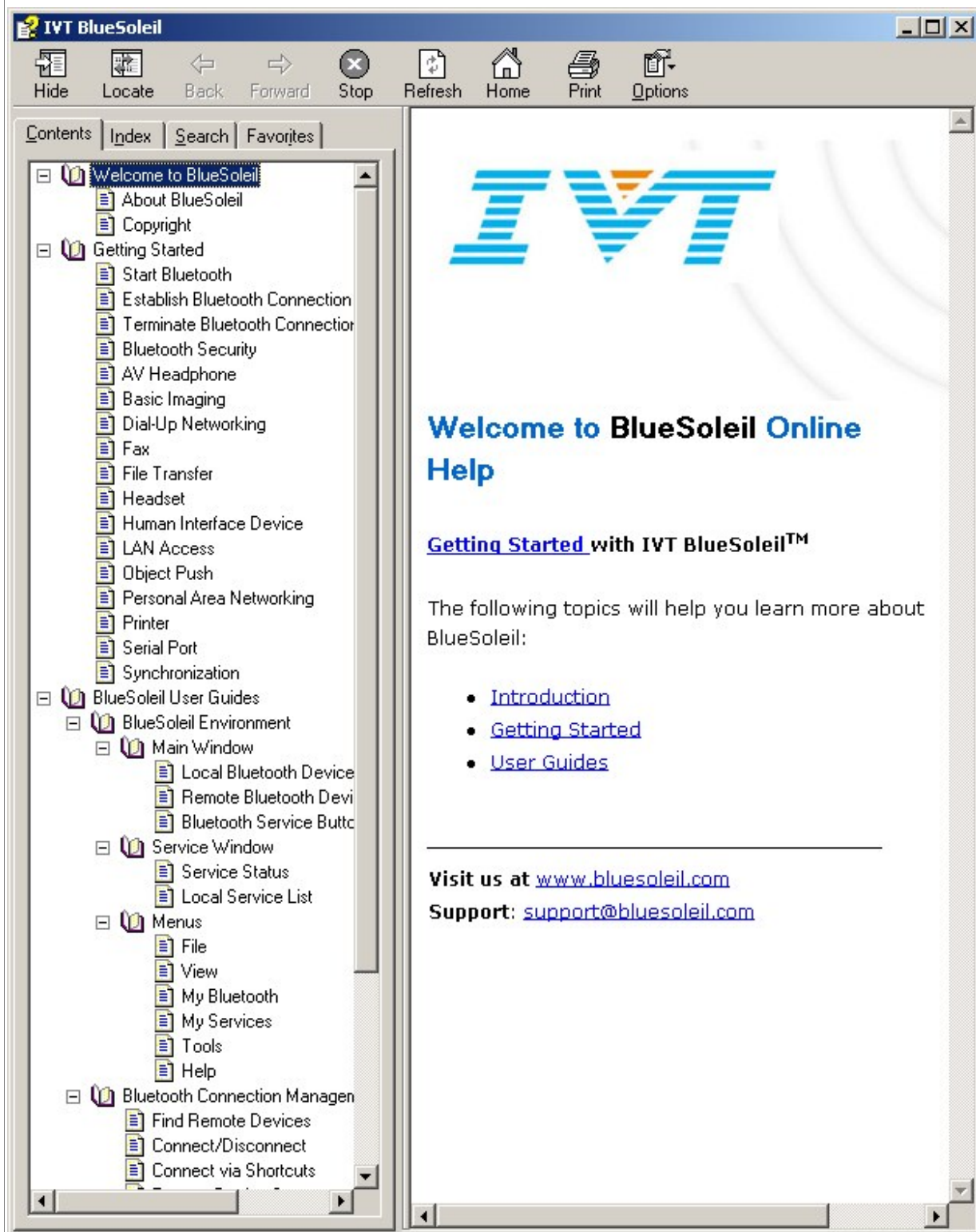
1. Please double click on the "BlueSoleil" icon from desktop to start the BlueSoleil software, or click from **Start → Programs → IVT BlueSoleil → BlueSoleil**.

2. Click on the red ball to start or stop searching for *Bluetooth* devices in range.





3. For more information about the BlueSoleil, please see its Online Help. You can start the Online Help by clicking **Help** → **Contents and Index** from main menu or press the F1 key.



## **FCC Notices**

This device complies with part 15 of the FCC rules. Operation is subject to the following two conditions:

- (1) This device may not cause harmful interference, and
- (2) This device must accept any interference received, including interference that may cause undesired operation .

FCC RF Exposure requirements:

This device and its antenna(s) must not be co-located or operation in conjunction with any other antenna or transmitter.

**NOTE: THE MANUFACTURER IS NOT RESPONSIBLE FOR ANY RADIO OR TV INTERFERENCE CAUSED BY UNAUTHORIZED MODIFICATIONS TO THIS EQUIPMENT. SUCH MODIFICATIONS COULD VOID THE USER'S AUTHORITY TO OPERATE THE EQUIPMENT.**