



US008731602B2

(12) **United States Patent**
Gunaratnam et al.

(10) **Patent No.:** **US 8,731,602 B2**

(45) **Date of Patent:** ***May 20, 2014**

(54) **NETWORK SELECTION METHODS AND APPARATUS WITH HOME NETWORK PRIORITIZATION AFTER NETWORK SIGNAL RECOVERY OR POWER-ON**
(75) Inventors: **Jayasri Gunaratnam**, Waterloo (CA); **Noushad S Naqvi**, Waterloo (CA); **Bryan Taylor**, Kitchener (CA); **Craig Ian Haight Swann**, Waterloo (CA); **Hugh R Hind**, Waterloo (CA); **Bao Quoc Nguyen**, San Diego (CA); **Darcy Richard Phipps**, Waterloo (CA)

(73) Assignee: **BlackBerry Limited**, Waterloo (CA)
(*) Notice: Subject to any disclaimer, the term of this patent is extended or adjusted under 35 U.S.C. 154(b) by 246 days.

This patent is subject to a terminal disclaimer.

(21) Appl. No.: **12/897,527**

(22) Filed: **Oct. 4, 2010**

(65) **Prior Publication Data**

US 2011/0021190 A1 Jan. 27, 2011

Related U.S. Application Data

(63) Continuation of application No. 10/788,715, filed on Feb. 27, 2004, now Pat. No. 7,818,024.

(60) Provisional application No. 60/519,514, filed on Nov. 13, 2003.

(51) **Int. Cl.**
H04B 7/00 (2006.01)
H04W 4/00 (2009.01)

(52) **U.S. Cl.**
USPC **455/525; 455/435.2**

(58) **Field of Classification Search**
CPC H04W 48/16; H04W 48/18; H04W 60/00; H04W 60/04
USPC 455/11.1, 433, 435.1, 435.2, 436, 437, 455/440, 517, 524, 525

See application file for complete search history.

(56) **References Cited**

U.S. PATENT DOCUMENTS

5,442,806 A 8/1995 Barber et al.
5,903,832 A 5/1999 Seppanen et al.

(Continued)

FOREIGN PATENT DOCUMENTS

EP 1076463 A2 2/2001
JP 9215039 A 8/1997
JP 2002077032 A 3/2002

OTHER PUBLICATIONS

European Search Report & Written Opinion for EP Application # 10184138.5, Mar. 10, 2011.

(Continued)

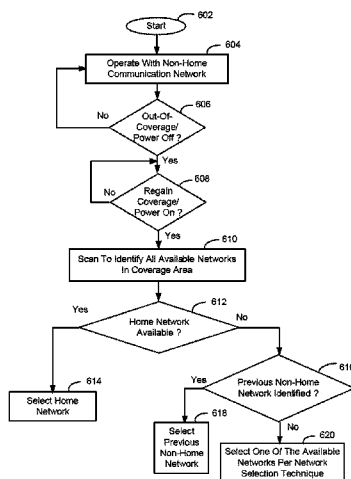
Primary Examiner — Quochien B Vuong

(74) *Attorney, Agent, or Firm* — Moffat & Co.

(57) **ABSTRACT**

A network selection method for a mobile station which is associated with a Home Public Land Mobile Network (HPLMN) identified by a home Mobile Network Code (MNC) and Mobile Country Code (MCC) pair. The mobile station identifies a plurality of PLMNs in a geographic area, and selects a non-home PLMN identified by a non-home MNC/MCC pair and designated as a Registered PLMN (RPLMN). In response to regaining signal coverage from an out-of-coverage condition with the RPLMN, or being powered-on from a power-off state entered while operating with the RPLMN, the mobile station selects the HPLMN if the HPLMN identified by the home MNC/MCC pair is available. Otherwise, if the HPLMN is unavailable and the RPLMN identified by the non-home MNC/MCC pair is available, the mobile station selects the RPLMN. However, if the RPLMN is unavailable, the mobile station selects an alternate PLMN in accordance with an automatic or manual network selection method.

15 Claims, 7 Drawing Sheets



(56)

References Cited

U.S. PATENT DOCUMENTS

5,950,130 A * 9/1999 Coursey 455/432.1
6,223,042 B1 4/2001 Raffel
6,567,663 B1 5/2003 Otting et al.
6,728,536 B1 4/2004 Basilier et al.
6,826,414 B1 11/2004 Reynolds et al.
6,968,193 B2 11/2005 Van Loon et al.
7,089,001 B2 8/2006 Leung et al.
7,096,015 B2 8/2006 Bridges et al.
2002/0006792 A1 1/2002 Usher et al.
2002/0111168 A1 8/2002 Konno et al.
2002/0119774 A1 8/2002 Johannesson et al.
2003/0003910 A1 1/2003 McClure
2003/0129971 A1 7/2003 Gopikanth
2003/0134637 A1 7/2003 Cooper
2003/0148774 A1 8/2003 Naghian et al.
2004/0109431 A1 6/2004 Abrahamson et al.

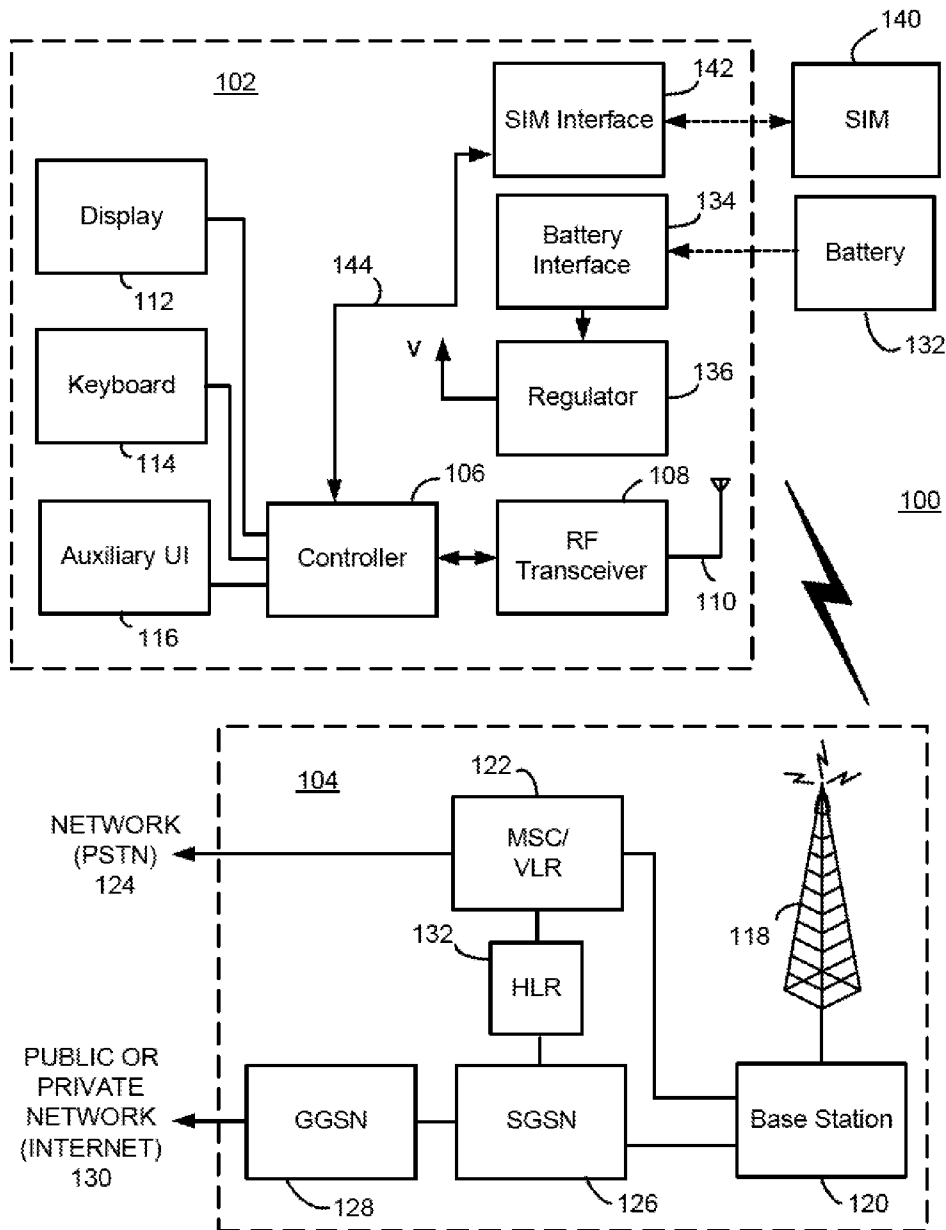
2004/0142658 A1 7/2004 McKenna et al.
2004/0203744 A1 10/2004 Hicks et al.
2005/0059397 A1 3/2005 Zhao
2005/0075129 A1 4/2005 Kuchibhotla et al.
2005/0090277 A1 4/2005 Islam et al.
2005/0094593 A1 5/2005 Buckley
2005/0113088 A1 5/2005 Zinn et al.

OTHER PUBLICATIONS

Japanese Office Action for Patent Application No. 2005518510, May 26, 2008.
PCT Search Report & Written Opinion for PCT Application PCT/CA2004/000295, Feb. 27, 2004.
“European Digital Cellular Telecommunications System (Phase 2) Functions Related to Mobile Station (MS) in Idle Mode (GSM 03.22)”, European Telecommunications Standards Institute, Feb. 1995, vol. SMG3, pp. 1-31, Valbonne, France.

* cited by examiner

FIG. 1



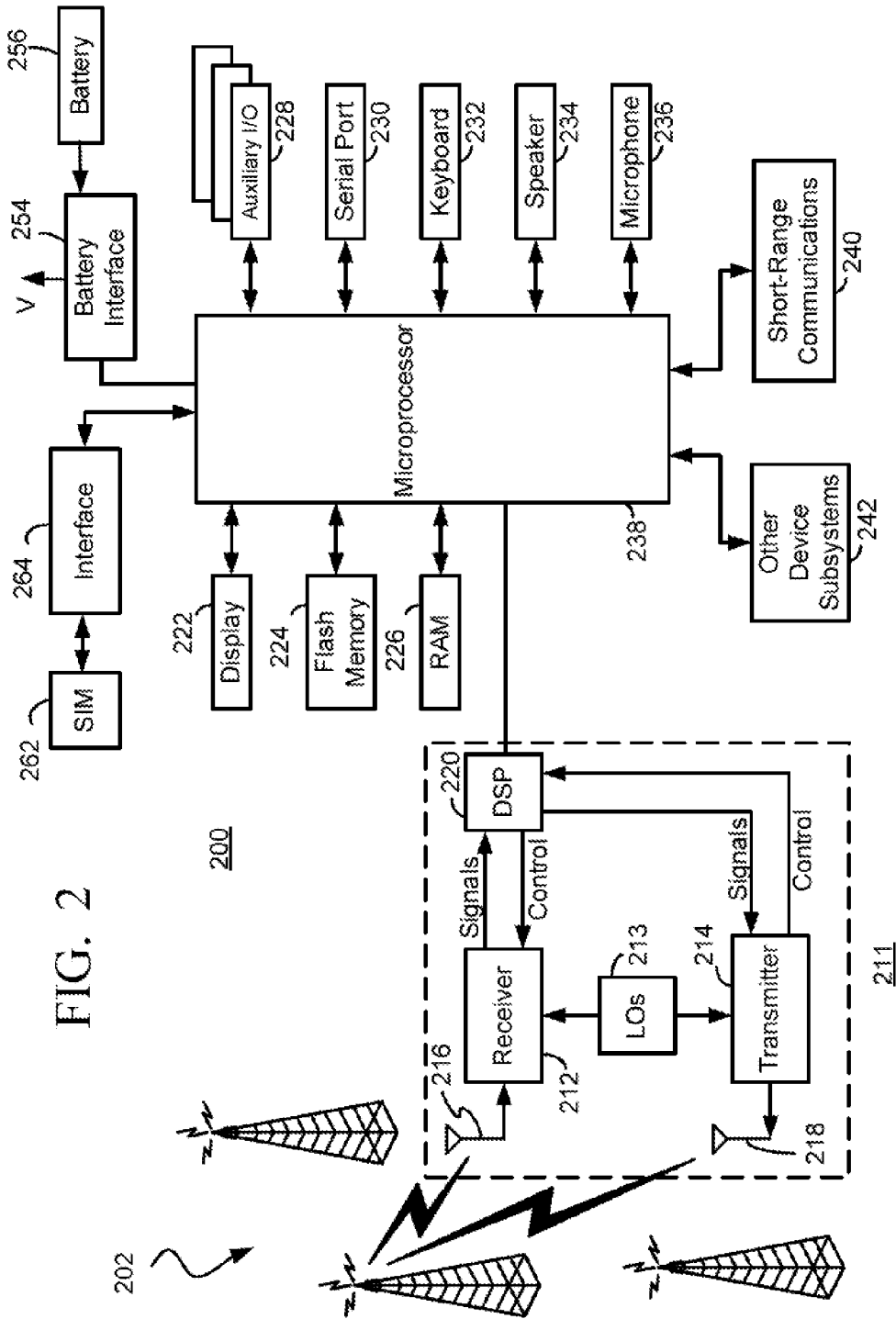


FIG. 2

FIG. 3

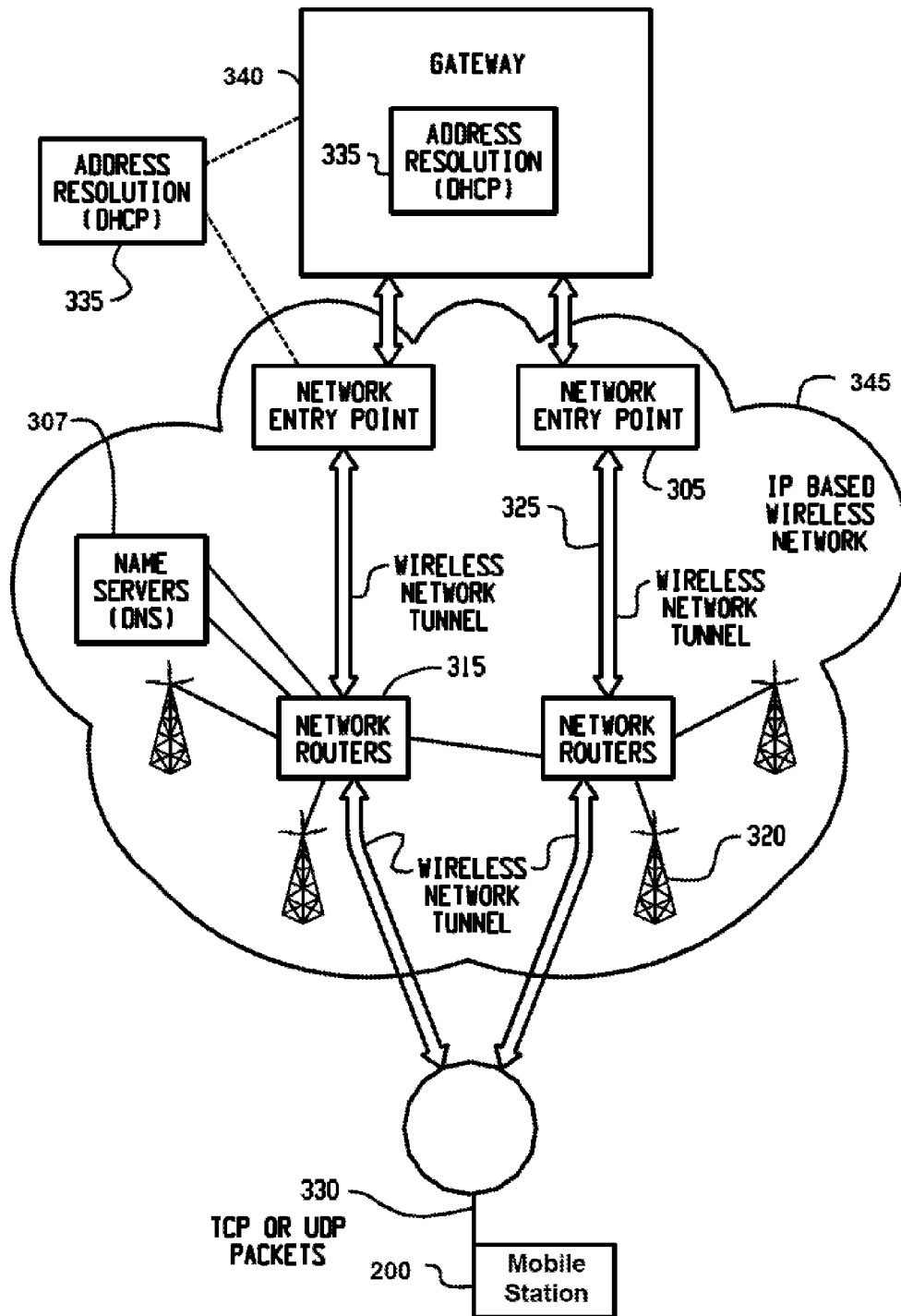


FIG. 4

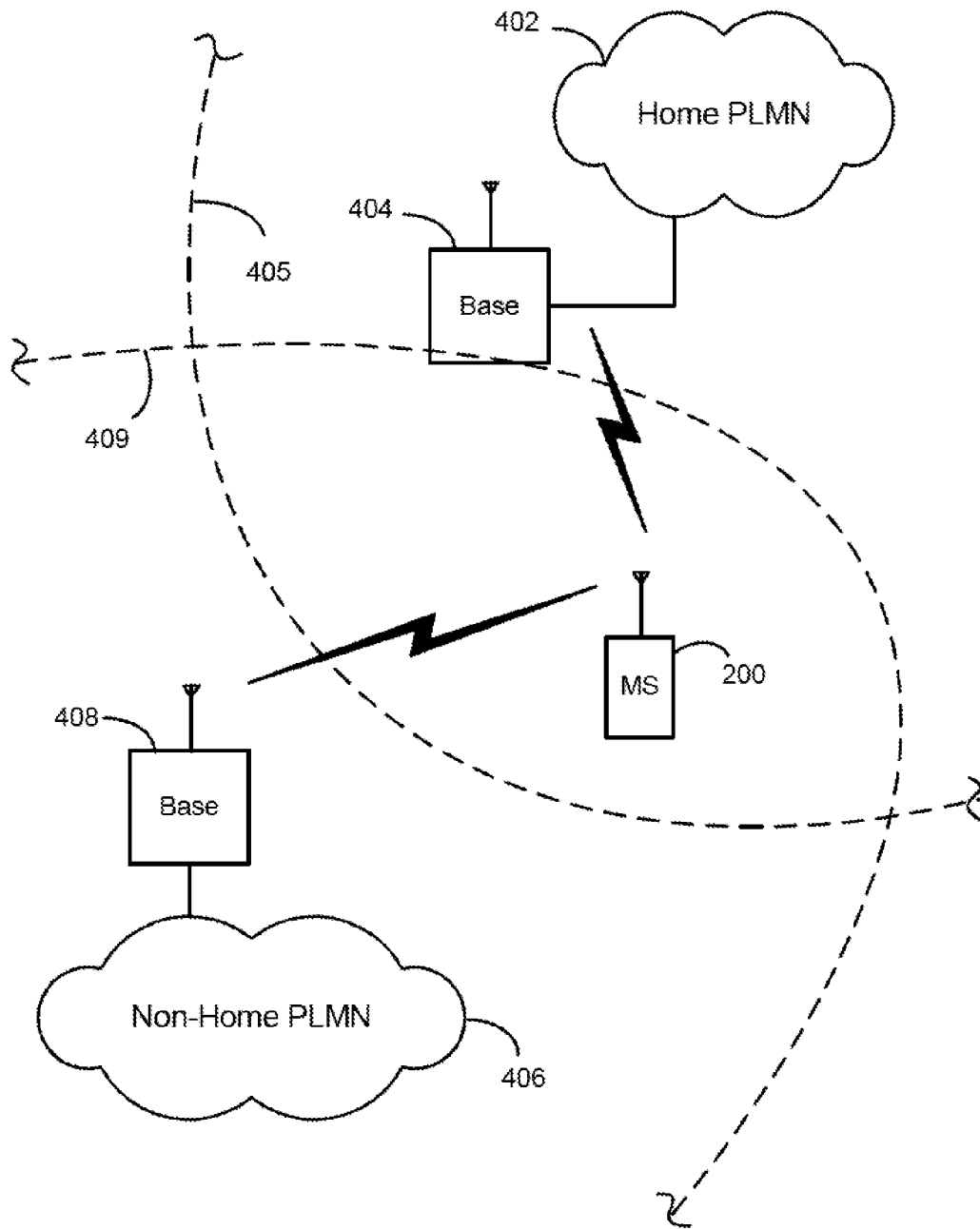


FIG. 5

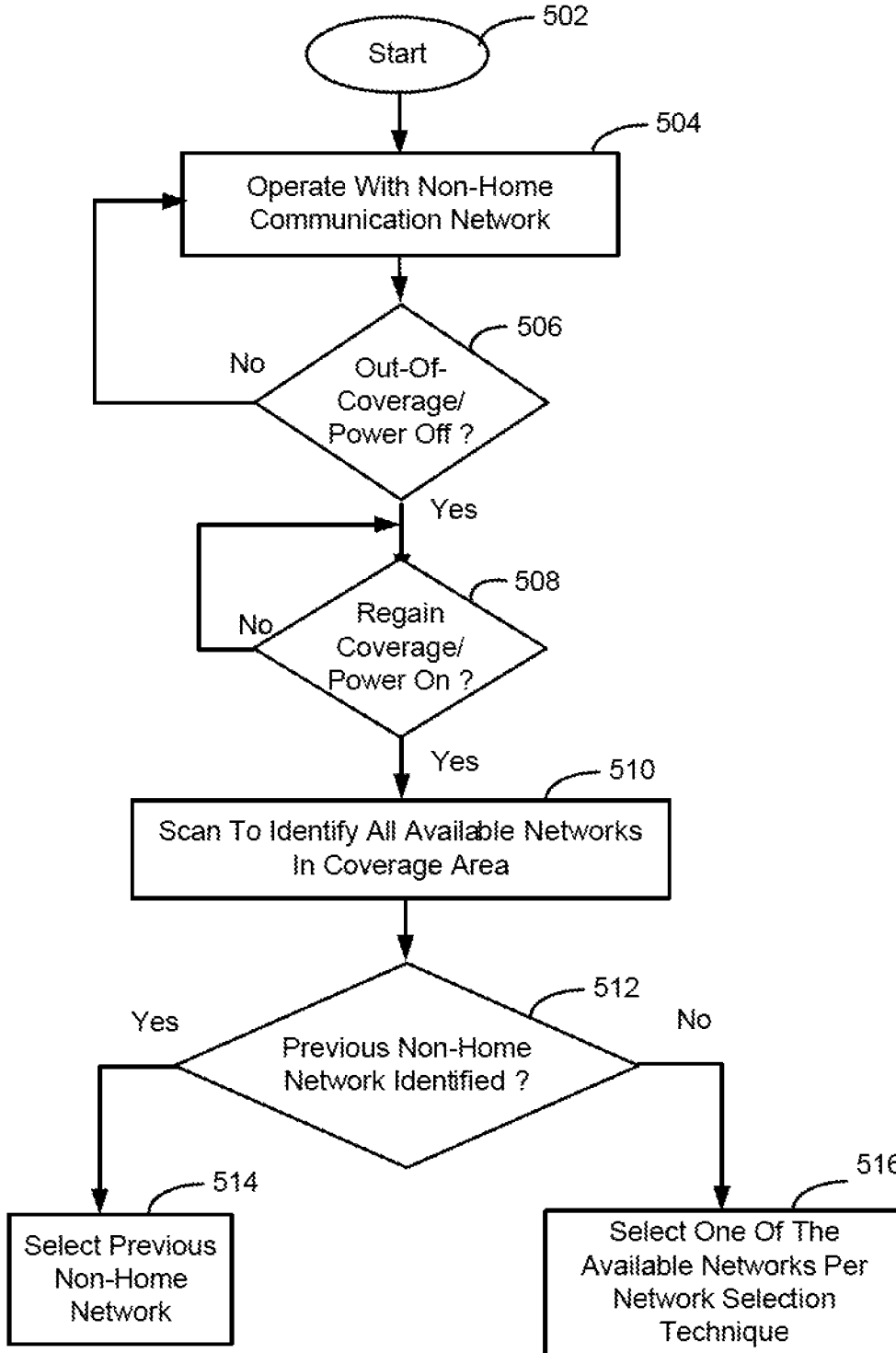


FIG. 6

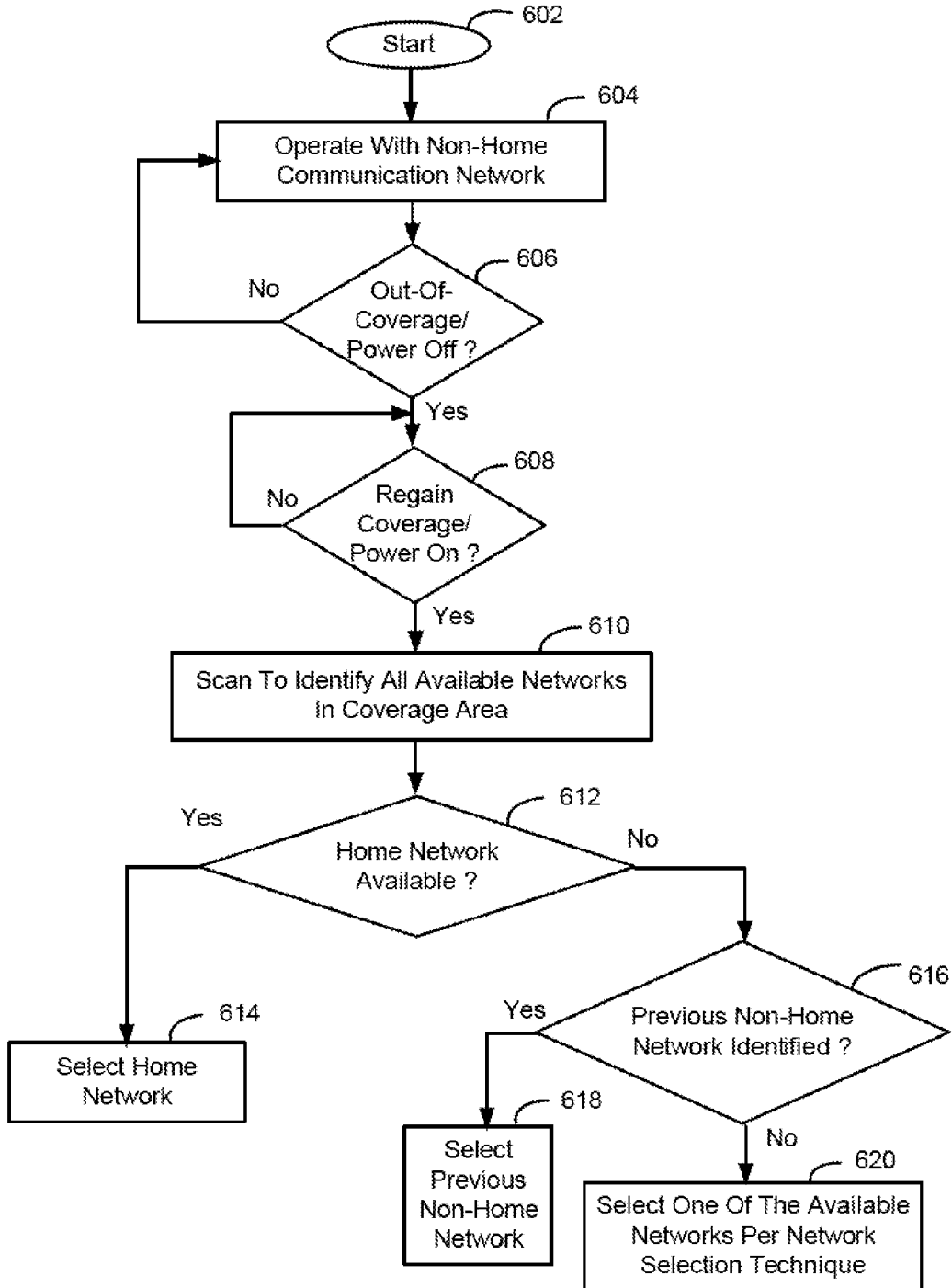
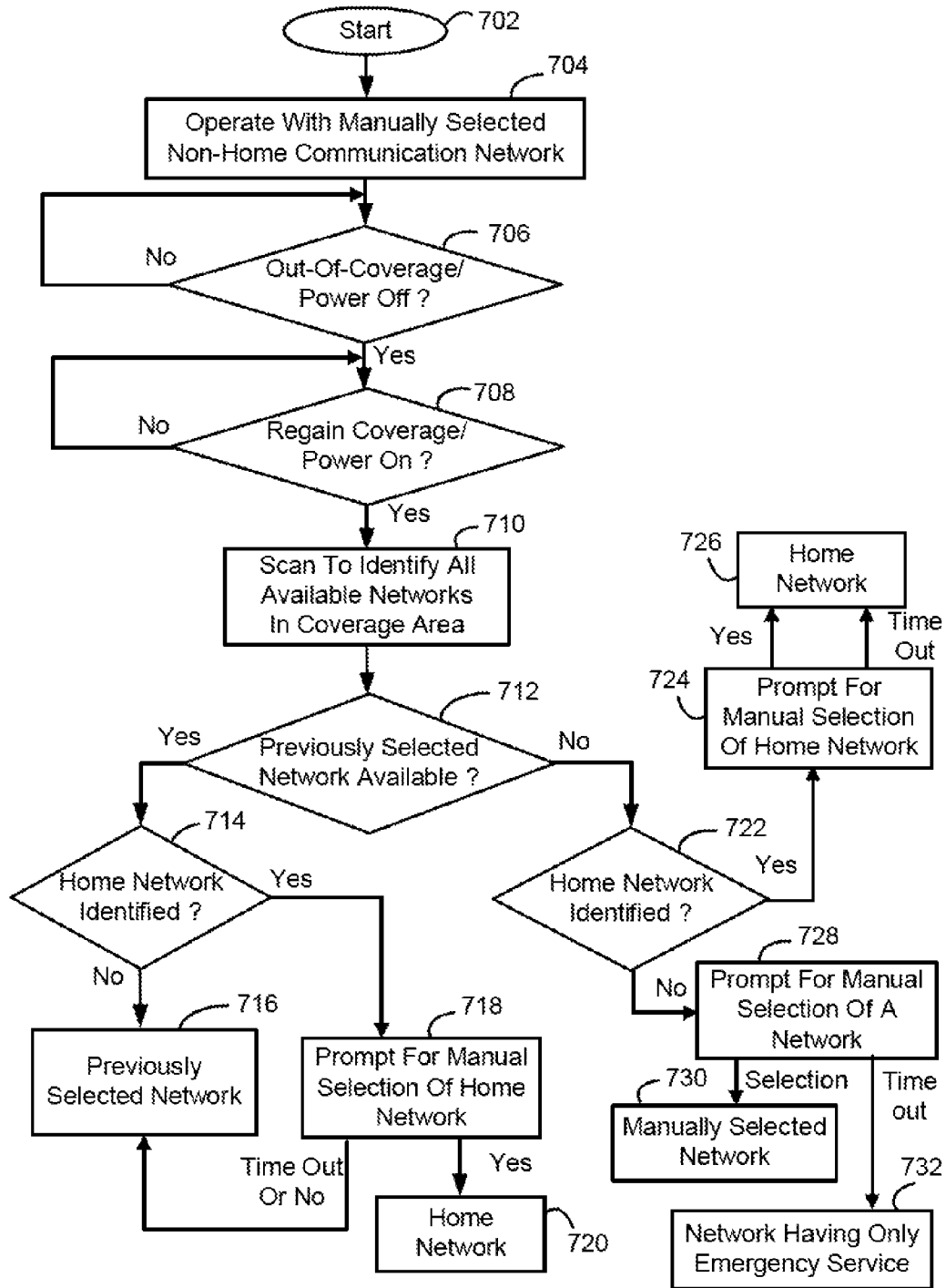


FIG. 7



**NETWORK SELECTION METHODS AND
APPARATUS WITH HOME NETWORK
PRIORITIZATION AFTER NETWORK
SIGNAL RECOVERY OR POWER-ON**

CROSS-REFERENCE TO RELATED
APPLICATIONS

This patent application is a continuation of and claims priority to a U.S. non-provisional patent application having application Ser. No. 10/788,715 and filing date of 27 Feb. 2004, now U.S. Pat. No. 7,818,024 B1, which claims the benefit of U.S. provisional patent application having application No. 60/519,514 and filing date of 13 Nov. 2003, each application being hereby incorporated by reference herein.

BACKGROUND

1. Field of the Technology

The present application relates generally to mobile stations and network selection methods employed thereby.

2. Description of the Related Art

A mobile communication device, such as a cellular mobile station, may be capable of making and receiving telephone calls and/or sending and receiving data over a wireless communication network. Before it is able to do this, the mobile station selects and registers with one of a plurality of communication networks which are available within its geographic coverage area. After registering with the selected network, the mobile station operates in an idle mode where it "camps-on" a particular wireless communication channel of the network to monitor for calls or messages. "Network selection" is the particular process performed by the mobile station for selecting the one communication network through which to register and operate.

Cellular telephony operation and network selection schemes are documented in standards specifications that govern the behavior of cellular mobile stations and associated systems. One well-known cellular standard is the Global System for Mobile Communications (GSM) standard. GSM 03.22/European Technical Standards Institute (ETSI) TX 100 930, Technical Specification (TS) 23.122 from the 3rd Generation Partnership Project (3GPP), and other related standards specifications describe the many details of cellular operation and network selection. These documents describe how a mobile station behaves as it moves and roams between various regions and countries to maintain coverage with networks (referred to as Public Land Mobile Networks or PLMNs), primarily for the purpose of providing continuous telephone service.

Traditionally, a mobile station performs network selection by initially scanning to identify all available communication networks within its surrounding coverage area. Each network is identified by a unique Mobile Country Code (MCC) and Mobile Network Code (MNC) pair. If the "home network" (HPLMN) of the mobile station is available, the mobile station will ordinarily select and operate with the home network. If the HPLMN is unavailable, the mobile station will ordinarily select and operate with the communication network having the highest priority in a preferred network list stored in memory of the mobile station. There may be several preferred network lists, commonly referred to as Preferred PLMN lists (PPLMN lists), stored on a Subscriber Identity Module (SIM) card of the mobile station. For example, the PPLMN lists may include a user-controlled PPLMN (U-PPLMN) list and an operator-controlled PLMN (O-PPLMN) list. The above-described network selection method is commonly referred to as

an "automatic" network selection method. As an alternative to this automatic selection method, an end-user of the mobile station may be provided with the ability to manually select from a plurality of listed available networks which are visibly displayed on the mobile device. This conventional network selection method may be referred to as a "manual" network selection method.

Some issues exist with conventional network selection techniques for a mobile station, particularly relating to operation with the HPLMN. After recovering from an out-of-coverage condition, a mobile station operates to select the PLMN with which it had just previously registered (i.e. its "RPLMN"). If the RPLMN is unavailable, the mobile station performs a scan to identify and select a PLMN which may be the HPLMN. However, the specifications do not clearly and specifically address the situation where the RPLMN is not the HPLMN of the mobile station. If the RPLMN is not the HPLMN, and the HPLMN is available after the recovery from the out-of-coverage condition, it is specified that the mobile station is limited to selecting the non-home RPLMN (if available) upon recovery. Such conventional operation is described in ETSI specs 3.22/23.122. Similar problems exist when the mobile station is powered off while operating with the RPLMN and subsequently powered back on. In a related issue, the standards specify that if the last RPLMN is unavailable while the mobile station is in "manual" mode, the mobile station shall camp on any network providing emergency service. This selected network may not be the optimal network with which to operate, especially, for example, if the home network is available.

Accordingly, there is a resulting need for network selection methods and apparatus that overcome the deficiencies of the prior art.

BRIEF DESCRIPTION OF THE DRAWINGS

Embodiments of present invention will now be described by way of example with reference to attached figures, wherein:

FIG. 1 is a block diagram of a communication system which includes a mobile station for communicating in a wireless communication network;

FIG. 2 is a more detailed example of a mobile station for use in the wireless communication network;

FIG. 3 is a particular structure of a system for communicating with the mobile station;

FIG. 4 is an illustration of a mobile station which is currently registered with and communicating through a non-home communication network while its home network is made available;

FIG. 5 is a flowchart for describing a method of selecting a communication network according to current standards;

FIG. 6 is a flowchart for describing a method of "automatic" selection of a communication network with home network prioritization after network signal recovery and/or power-on; and

FIG. 7 is a flowchart for describing a method of "manual" selection of a communication network with home network prioritization after network signal recovery and/or power-on.

DETAILED DESCRIPTION OF THE PREFERRED
EMBODIMENTS

Network selection methods and apparatus with home network prioritization after network signal recovery and/or power on are described herein. In one illustrative example involving "automatic" network selection, a mobile station

selects and operates with a non-home communication network. The mobile station then experiences an out-of-coverage condition (or a power down condition) but subsequently regains signal coverage (or is powered back on). In response, the mobile station scans to identify a plurality of communication networks in its coverage area. If a home communication network (e.g. HPLMN) is identified as being available, the mobile station selects and operates with the home communication network. Otherwise, if the previous non-home communication network (e.g. RPLMN) is identified as being available, the mobile station continues operation with the previous non-home communication network. In another illustrative example involving "manual" network selection, a user input from a user interface for manually selecting a communication network with which the mobile station will operate is received. After regaining network signal coverage from an out-of-coverage condition, or after powering on from a power-off state, the mobile station scans to identify a plurality of communication networks in a coverage area. If the previous manually-selected network (e.g. the RPLMN) is available but the home network is unavailable as identified by the scanning, then the mobile station continues to operate with the previous manually-selected network. If a home communication network (e.g. HPLMN) is identified as being available by the scanning, however, the mobile station causes a visual input prompt to be displayed for manual selection of the home network.

FIG. 1 is a block diagram of a communication system 100 which includes a mobile station 102 which communicates through a wireless communication network 104. Mobile station 102 preferably includes a visual display 112, a keyboard 114, and perhaps one or more auxiliary user interfaces (UI) 116, each of which are coupled to a controller 106. Controller 106 is also coupled to radio frequency (RF) transceiver circuitry 108 and an antenna 110.

In most modern communication devices, controller 106 is embodied as a central processing unit (CPU) which runs operating system software in a memory component (not shown). Controller 106 will normally control overall operation of mobile device 102, whereas signal processing operations associated with communication functions are typically performed in RF transceiver circuitry 108. Controller 106 interfaces with device display 112 to display received information, stored information, user inputs, and the like. Keyboard 114, which may be a telephone type keypad or full alphanumeric keyboard, is normally provided for entering data for storage in mobile station 102, information for transmission to network 104, a telephone number to place a telephone call, commands to be executed on mobile station 102, and possibly other or different user inputs.

Mobile station 102 sends communication signals to and receives communication signals from network 104 over a wireless link via antenna 110. RF transceiver circuitry 108 performs functions similar to those of base station 120, including for example modulation/demodulation and possibly encoding/decoding and encryption/decryption. It is also contemplated that RF transceiver circuitry 108 may perform certain functions in addition to those performed by base station 120. It will be apparent to those skilled in art that RF transceiver circuitry 108 will be adapted to particular wireless network or networks in which mobile station 102 is intended to operate. When mobile station 102 is fully operational, an RF transmitter of RF transceiver circuitry 108 is typically keyed or turned on only when it is sending to network, and is otherwise turned off to conserve resources. Such intermittent operation of transmitter has a dramatic effect on power consumption of mobile station 102. Similarly, an RF receiver of

RF transceiver circuitry 108 is typically periodically turned off to conserve power until it is needed to receive signals or information (if at all) during designated time periods.

Mobile station 102 includes a battery interface 134 for receiving one or more rechargeable batteries 132. When mobile station 102 is powered on by the end user (at keyboard 114, for example), battery 132 provides electrical power to (most if not all) electrical circuitry in mobile station 102. Battery interface 134 provides for both a mechanical and electrical connection for battery 132. Battery interface 134 is coupled to a regulator 136 which regulates power for the device. When mobile station 102 is powered off by the end user to place mobile station 102 in a power-off state, electrical power to most circuits (e.g. at last to RF transceiver 108) is cut off.

Mobile station 102 may consist of a single unit, such as a data communication device, a cellular telephone, a multiple-function communication device with data and voice communication capabilities, a personal digital assistant (PDA) enabled for wireless communication, or a computer incorporating an internal modem. Alternatively, mobile station 102 may be a multiple-module unit comprising a plurality of separate components, including but in no way limited to a computer or other device connected to a wireless modem. In particular, for example, in the mobile station block diagram of FIG. 1, RF transceiver circuitry 108 and antenna 110 may be implemented as a radio modem unit that may be inserted into a port on a laptop computer. In this case, the laptop computer would include display 112, keyboard 114, one or more auxiliary UIs 116, and controller 106 embodied as the computer's CPU. It is also contemplated that a computer or other equipment not normally capable of wireless communication may be adapted to connect to and effectively assume control of RF transceiver circuitry 108 and antenna 110 of a single-unit device such as one of those described above. Such a mobile station 102 may have a more particular implementation as described later in relation to mobile station 200 of FIG. 2.

Mobile station 102 operates using a Subscriber Identity Module (SIM) 140 which is connected to or inserted in mobile station 102 at a SIM interface 142. SIM 140 is one type of a conventional "smart card" used to identify an end user (or subscriber) of mobile station 102 and to personalize the device, among other things. Without SIM 140, the mobile terminal is not fully operational for communication through wireless network 104. By inserting SIM 140 into the mobile terminal, an end user can have access to any and all of his/her subscribed services. In order to identify the subscriber, SIM 140 contains some user parameters such as an International Mobile Subscriber Identity (IMSI) as well as a preferred network list. In addition, SIM 140 is typically protected by a four-digit Personal Identification Number (PIN) which is stored therein and known only by the end user. An advantage of using SIM 140 is that end users are not necessarily bound by any single physical mobile terminal. Typically, the only element that personalizes a mobile terminal is a SIM. Therefore, the user can access subscribed services using most any mobile terminal equipped to operate with the user's SIM 140. SIM 140 generally includes a processor and memory for storing information. SIM 140 and its interfacing standards are well known. For interfacing with a standard GSM device having SIM interface 142, a conventional SIM 140 has six (6) connections.

Mobile station 102 communicates in and through wireless communication network 104. In the embodiment of FIG. 1, wireless network 104 operates in accordance with a Global Systems for Mobile (GSM) and General Packet Radio Service (GPRS). Wireless network 104 includes a base station

120 with an associated antenna tower **118**, a Mobile Switching Center (MSC) **122**, a Home Location Register (HLR) **132**, a Serving General Packet Radio Service (GPRS) Support Node (SGSN) **126**, and a Gateway GPRS Support Node (GGSN) **128**. MSC **122** is coupled to base station **120** and to a landline network, such as a Public Switched Telephone Network (PSTN) **124**. SGSN **126** is coupled to base station **120** and to GGSN **128**, which is in turn coupled to a public or private data network **130** (such as the Internet). HLR **132** is coupled to MSC **122** and SGSN **126**.

Base station **120**, including its associated controller and antenna tower **118**, provides wireless network coverage for a particular coverage area commonly referred to as a "cell". Base station **120** transmits communication signals to and receives communication signals from mobile stations within its cell via antenna tower **118**. Base station **120** normally performs such functions as modulation and possibly encoding and/or encryption of signals to be transmitted to mobile station **102** in accordance with particular, usually predetermined, communication protocols and parameters, under control of its controller. Base station **120** similarly demodulates and possibly decodes and decrypts, if necessary, any communication signals received from mobile station **102** within its cell. Communication protocols and parameters may vary between different networks. For example, one network may employ a different modulation scheme and operate at different frequencies than other networks.

The wireless link shown in communication system **100** of FIG. **1** represents one or more different channels, typically different radio frequency (RF) channels, and associated protocols used between wireless network **104** and mobile station **102**. An RF channel is a limited resource that must be conserved, typically due to limits in overall bandwidth and a limited battery power of mobile station **102**. Those skilled in art will appreciate that a wireless network in actual practice may include hundreds of cells, each served by a distinct base station **120** and transceiver, depending upon desired overall expanse of network coverage. All base station controllers and base stations may be connected by multiple switches and routers (not shown), controlled by multiple network controllers.

For all mobile station's **102** registered with a network operator, permanent data (such as a user's profile of mobile station **102**) as well as temporary data (such as a current location of mobile station **102**) are stored in HLR **132**. In case of a voice call to mobile station **102**, HLR **132** is queried to determine the current location of mobile station **102**. A Visitor Location Register (VLR) of MSC **122** is responsible for a group of location areas and stores the data of those mobile stations that are currently in its area of responsibility. This includes parts of the permanent mobile station data that have been transmitted from HLR **132** to the VLR for faster access. However, the VLR of MSC **122** may also assign and store local data, such as temporary identifications. Optionally, the VLR of MSC **122** can be enhanced for more efficient coordination of GPRS and non-GPRS services and functionality (e.g. paging for circuit-switched calls which can be performed more efficiently via SGSN **126**, and combined GPRS and non-GPRS location updates).

Being part of the GPRS network, Serving GPRS Support Node (SGSN) **126** is at the same hierarchical level as MSC **122** and keeps track of the individual locations of mobile stations. SGSN **126** also performs security functions and access control. Gateway GPRS Support Node (GGSN) **128** provides interworking with external packet-switched networks and is connected with SGSNs (such as SGSN **126**) via an IP-based GPRS backbone network. SGSN **126** performs

authentication and cipher setting procedures based on the same algorithms, keys, and criteria as in existing GSM. In conventional operation, cell selection may be performed autonomously by mobile station **102** or by base station **120** instructing mobile station **102** to select a particular cell. Mobile station **102** informs wireless network **104** when it reselects another cell or group of cells, known as a routing area.

In order to access GPRS services, mobile station **102** first makes its presence known to wireless network **104** by performing what is known as a GPRS "attach". This operation establishes a logical link between mobile station **102** and SGSN **126** and makes mobile station **102** available to receive, for example, pages via SGSN, notifications of incoming GPRS data, or SMS messages over GPRS. In order to send and receive GPRS data, mobile station **102** assists in activating the packet data address that it wants to use. This operation makes mobile station **102** known to GGSN **128**; interworking with external data networks can thereafter commence. User data may be transferred transparently between mobile station **102** and the external data networks using, for example, encapsulation and tunneling. Data packets are equipped with GPRS-specific protocol information and transferred between mobile station **102** and GGSN **128**.

As apparent from the above, the wireless network includes fixed network components including RF transceivers, amplifiers, base station controllers, network servers, and servers connected to network. Those skilled in art will appreciate that a wireless network may be connected to other systems, possibly including other networks, not explicitly shown in FIG. **1**. A network will normally be transmitting at very least some sort of paging and system information on an ongoing basis, even if there is no actual packet data exchanged. Although the network consists of many parts, these parts all work together to result in certain behaviours at the wireless link.

FIG. **2** is a detailed block diagram of a preferred mobile communication device, a mobile station **200**. Mobile station **200** is preferably a two-way communication device having voice and data communication capabilities, including the capability to communicate with other computer systems. Depending on the functionality provided by mobile station **200**, it may be referred to as a data messaging device, a two-way pager, a cellular telephone with data messaging capabilities, a wireless Internet appliance, or a data communication device (with or without telephony capabilities).

If mobile station **200** is enabled for two-way communication, it will normally incorporate a communication subsystem **211**, which includes a receiver **212**, a transmitter **214**, and associated components, such as one or more (preferably embedded or internal) antenna elements **216** and **218**, local oscillators (LOs) **213**, and a processing module such as a digital signal processor (DSP) **220**. Communication subsystem **211** is analogous to RF transceiver circuitry **108** and antenna **110** shown in FIG. **1**. As will be apparent to those skilled in field of communications, particular design of communication subsystem **211** depends on the communication network in which mobile station **200** is intended to operate.

Network access requirements will also vary depending upon type of network utilized. In GPRS networks, for example, network access is associated with a subscriber or user of mobile station **200**. A GPRS device therefore requires a Subscriber Identity Module, commonly referred to as a "SIM" **262**, in order to operate on the GPRS network. Without such a SIM **262** inserted in a SIM interface **264**, a GPRS device will not be fully functional. Local or non-network communication functions (if any) may be operable, but mobile station **200** will be unable to carry out any functions

involving communications over the network. SIM 262 includes those features described in relation to FIG. 1.

Mobile station 200 will operate in connection with one of a plurality of base stations 202 associated with the same or different networks at any given time. Mobile station 200 may send and receive communication signals with the selected network after required network registration or activation procedures have been completed. Network selection of the present application is described in relation to FIGS. 6-7 below. Signals received by antenna 216 through the network are input to receiver 212, which may perform such common receiver functions as signal amplification, frequency down conversion, filtering, channel selection, and like, and in example shown in FIG. 2, analog-to-digital (A/D) conversion. A/D conversion of a received signal allows more complex communication functions such as demodulation and decoding to be performed in DSP 220. In a similar manner, signals to be transmitted are processed, including modulation and encoding, for example, by DSP 220. These DSP-processed signals are input to transmitter 214 for digital-to-analog (D/A) conversion, frequency up conversion, filtering, amplification and transmission over communication network via antenna 218. DSP 220 not only processes communication signals, but also provides for receiver and transmitter control. For example, the gains applied to communication signals in receiver 212 and transmitter 214 may be adaptively controlled through automatic gain control algorithms implemented in DSP 220.

Mobile station 200 includes a microprocessor 238 (which is one implementation of controller 106 of FIG. 1) which controls overall operation of mobile station 200. Communication functions, including at least data and voice communications, are performed through communication subsystem 211. Microprocessor 238 also interacts with additional device subsystems such as a display 222, a flash memory 224, a random access memory (RAM) 226, auxiliary input/output (I/O) subsystems 228, a serial port 230, a keyboard 232, a speaker 234, a microphone 236, a short-range communications subsystem 240, and any other device subsystems generally designated at 242. Data and control lines 260 extend between SIM interface 254 and microprocessor 238 for communicating data therebetween and for control. Some of the subsystems shown in FIG. 2 perform communication-related functions, whereas other subsystems may provide "resident" or on-device functions. Notably, some subsystems, such as keyboard 232 and display 222, for example, may be used for both communication-related functions, such as entering a text message for transmission over a communication network, and device-resident functions such as a calculator or task list. Operating system software used by microprocessor 238 is preferably stored in a persistent store such as flash memory 224, which may alternatively be a read-only memory (ROM) or similar storage element (not shown). Those skilled in the art will appreciate that the operating system, specific device applications, or parts thereof, may be temporarily loaded into a volatile store such as RAM 226.

Microprocessor 238, in addition to its operating system functions, preferably enables execution of software applications on mobile station 200. A predetermined set of applications which control basic device operations, including at least data and voice communication applications (such as a network selection scheme), will normally be installed on mobile station 200 during its manufacture. A preferred application that may be loaded onto mobile station 200 may be a personal information manager (PIM) application having the ability to organize and manage data items relating to user such as, but not limited to, e-mail, calendar events, voice mails, appoint-

ments, and task items. Naturally, one or more memory stores are available on mobile station 200 and SIM 262 to facilitate storage of PIM data items and other information.

The PIM application preferably has the ability to send and receive data items via the wireless network. In a preferred embodiment, PIM data items are seamlessly integrated, synchronized, and updated via the wireless network, with the mobile device user's corresponding data items stored and/or associated with a host computer system thereby creating a mirrored host computer on mobile station 200 with respect to such items. This is especially advantageous where the host computer system is the mobile device user's office computer system. Additional applications may also be loaded onto mobile station 200 through network, an auxiliary I/O subsystem 228, serial port 230, short-range communications subsystem 240, or any other suitable subsystem 242, and installed by a user in RAM 226 or preferably a non-volatile store (not shown) for execution by microprocessor 238. Such flexibility in application installation increases the functionality of mobile station 200 and may provide enhanced on-device functions, communication-related functions, or both. For example, secure communication applications may enable electronic commerce functions and other such financial transactions to be performed using mobile station 200.

In a data communication mode, a received signal such as a text message or web page download will be processed by communication subsystem 211 and input to microprocessor 238. Microprocessor 238 will preferably further process the signal for output to display 222 or alternatively to auxiliary I/O device 228. A user of mobile station 200 may also compose data items, such as e-mail messages or short message service (SMS) messages, for example, using keyboard 232 in conjunction with display 222 and possibly auxiliary I/O device 228. Keyboard 232 is preferably a complete alphanumeric keyboard and/or telephone-type keypad. These composed items may be transmitted over a communication network through communication subsystem 211.

For voice communications, the overall operation of mobile station 200 is substantially similar, except that the received signals would be output to speaker 234 and signals for transmission would be generated by microphone 236. Alternative voice or audio I/O subsystems, such as a voice message recording subsystem, may also be implemented on mobile station 200. Although voice or audio signal output is preferably accomplished primarily through speaker 234, display 222 may also be used to provide an indication of the identity of a calling party, duration of a voice call, or other voice call related information, as some examples.

Serial port 230 in FIG. 2 is normally implemented in a personal digital assistant (PDA)-type communication device for which synchronization with a user's desktop computer is a desirable, albeit optional, component. Serial port 230 enables a user to set preferences through an external device or software application and extends the capabilities of mobile station 200 by providing for information or software downloads to mobile station 200 other than through a wireless communication network. The alternate download path may, for example, be used to load an encryption key onto mobile station 200 through a direct and thus reliable and trusted connection to thereby provide secure device communication.

Short-range communications subsystem 240 of FIG. 2 is an additional optional component which provides for communication between mobile station 200 and different systems or devices, which need not necessarily be similar devices. For example, subsystem 240 may include an infrared device and associated circuits and components, or a Bluetooth™ communication module to provide for communication with simi-

larly-enabled systems and devices. Bluetooth™ is a registered trademark of Bluetooth SIG, Inc.

Mobile station **200** also includes a battery interface **254** for receiving one or more rechargeable batteries **256**. When mobile station **200** is powered on by the end user (at keyboard **232**, for example), battery **256** provides electrical power to most if not all electrical circuitry in mobile station **200**. Battery interface **254** provides for both a mechanical and electrical connection for battery **256**. Battery interface **254** is coupled to a regulator (not shown in FIG. 2) which regulates power to all of the circuitry. When mobile station **200** is powered off by the end user to place mobile station **200** in a power-off state, electrical power to most circuits (e.g. at least to communication sub-system **211**) is cut off.

FIG. 3 shows a particular system structure for communicating with a wireless communication device. In particular, FIG. 3 shows basic components of an IP-based wireless data network, such as a GPRS network. Mobile station **200** communicates with a wireless packet data network **345**, and may also be capable of communicating with a wireless voice network (not shown). The voice network may be associated with IP-based wireless network **345** similar to, for example, GSM and GPRS networks, or alternatively may be a completely separate network. The GPRS IP-based data network is unique in that it is effectively an overlay on the GSM voice network. As such, GPRS components will either extend existing GSM components, such as base stations **320**, or require additional components to be added, such as an advanced Gateway GPRS Service Node (GGSN) as a network entry point **305**.

As shown in FIG. 3, a gateway **340** may be coupled to an internal or external address resolution component **335** and one or more network entry points **305**. Data packets are transmitted from gateway **340**, which is source of information to be transmitted to mobile station **200**, through network **345** by setting up a wireless network tunnel **325** from gateway **340** to mobile station **200**. In order to create this wireless tunnel **325**, a unique network address is associated with mobile station **200**. In an IP-based wireless network, however, network addresses are typically not permanently assigned to a particular mobile station **200** but instead are dynamically allocated on an as-needed basis. It is thus preferable for mobile station **200** to acquire a network address and for gateway **340** to determine this address so as to establish wireless tunnel **325**.

Network entry point **305** is generally used to multiplex and demultiplex amongst many gateways, corporate servers, and bulk connections such as the Internet, for example. There are normally very few of these network entry points **305**, since they are also intended to centralize externally available wireless network services. Network entry points **305** often use some form of an address resolution component **335** that assists in address assignment and lookup between gateways and mobile devices. In this example, address resolution component **335** is shown as a dynamic host configuration protocol (DHCP) as one method for providing an address resolution mechanism.

A central internal component of wireless data network **345** is a network router **315**. Normally, network routers **315** are proprietary to the particular network, but they could alternatively be constructed from standard commercially available hardware. The purpose of network routers **315** is to centralize thousands of base stations **320** normally implemented in a relatively large network into a central location for a long-haul connection back to network entry point **305**. In some networks there may be multiple tiers of network routers **315** and cases where there are master and slave network routers **315**, but in all such cases the functions are similar. Often network router **315** will access a name server **307**, in this case shown

as a dynamic name server (DNS) **307** as used in the Internet, to look up destinations for routing data messages. Base stations **320**, as described above, provide wireless links to mobile devices such as mobile station **200**.

Wireless network tunnels such as a wireless tunnel **325** are opened across wireless network **345** in order to allocate necessary memory, routing, and address resources to deliver IP packets. In GPRS, such tunnels **325** are established as part of what are referred to as "PDP contexts" (i.e. data sessions). To open wireless tunnel **325**, mobile station **200** must use a specific technique associated with wireless network **345**. The step of opening such a wireless tunnel **325** may require mobile station **200** to indicate the domain, or network entry point **305** with which it wishes to open wireless tunnel **325**. In this example, the tunnel first reaches network router **315** which uses name server **307** to determine which network entry point **305** matches the domain provided. Multiple wireless tunnels can be opened from one mobile station **200** for redundancy, or to access different gateways and services on the network. Once the domain name is found, the tunnel is then extended to network entry point **305** and necessary resources are allocated at each of the nodes along the way. Network entry point **305** then uses the address resolution (or DHCP **335**) component to allocate an IP address for mobile station **200**. When an IP address has been allocated to mobile station **200** and communicated to gateway **340**, information can then be forwarded from gateway **340** to mobile station **200**.

Wireless tunnel **325** typically has a limited life, depending on mobile device's **100** coverage profile and activity. Wireless network **345** will tear down wireless tunnel **325** after a certain period of inactivity or out-of-coverage period, in order to recapture resources held by this wireless tunnel **325** for other users. The main reason for this is to reclaim the IP address temporarily reserved for mobile station **200** when wireless tunnel **325** was first opened. Once the IP address is lost and wireless tunnel **325** is torn down, gateway **340** loses all ability to initiate IP data packets to mobile station **200**, whether over Transmission Control Protocol (TCP) or over User Datagram Protocol (UDP).

In this application, an "IP-based wireless network" (one specific type of wireless communication network) may include but is not limited to: (1) a Code Division Multiple Access (CDMA) network that has been developed and operated by Qualcomm; (2) a General Packet Radio Service (GPRS) network for use in conjunction with Global System for Mobile Communications (GSM) network both developed by standards committee of European Conference of Postal and Telecommunications Administrations (CEPT); and (3) future third-generation (3G) networks like Enhanced Data rates for GSM Evolution (EDGE) and Universal Mobile Telecommunications System (UMTS). It is to be understood that although particular IP-based wireless networks have been described, the communication re-establishment schemes of the present application could be utilized in any suitable type of wireless packet data network.

The infrastructure shown and described in relation to FIG. 3 may be representative of each one of a number of different communication networks which are provided and available in the same geographic region. One of these communication networks will be selected by the mobile device, either in an automatic or manual fashion, for communications.

FIG. 4 is an illustration of mobile station **200** currently registered and communicating with a non-home communication network **406**. A home communication network **402** of mobile station **200** is nearby and includes at least one base station **404** which has a signal coverage area which is partially

11

designated by a dashed line **405**. Home network **402** is associated with a first Mobile Country Code (MCC)/Mobile Network Code (MNC) pair. Non-home network **406** also includes at least one base station **408** which has a signal coverage area which is partially designated by a dashed line **409**. Non-home network **406** is associated with a second MCC/MNC pair. The MCCs and MNCs are codes that are broadcasted by networks and received by mobile stations **200** during scanning operations of the mobile stations.

Consider the situation where mobile station **200** is being initially served by non-home communication network **406** and subsequently experiences an out-of-coverage condition. Per the specifications, after recovering from the out-of-coverage condition, mobile station **200** must operate to select the PLMN with which it had just previously registered (i.e. its "RPLMN"). In FIG. **4**, this would be non-home network **406**. If the RPLMN is unavailable, mobile station **200** performs a scan to identify and select a different PLMN (which may be its HPLMN). However, the current specifications do not clearly and specifically address the situation where the RPLMN is not the HPLMN of mobile station **200**. If the RPLMN is not the HPLMN, but the HPLMN (e.g. home network **402** of FIG. **4**) is available after the recovery from the out-of-coverage condition, mobile station **200** is restricted to selecting the non-home RPLMN (if available) upon recovery. This situation is depicted in FIG. **4** where the signal coverage areas of both networks are overlapping. Similar problems exist when the mobile station is powered off while operating with the RPLMN and subsequently powered back on. Such conventional operation is described in ETSI specs 3.22/23.122.

FIG. **5** is a flowchart for generally describing the method of selecting a communication network according to current standards, which is described in more detail in current ETSI specs 3.22/23.122. Beginning at a start block **502**, a mobile station operates on a non-home communication network (step **504**) (e.g. non-home network **406** of FIG. **4**). The non-home network is not the home network of the mobile station; the home network has a first MCC/MNC pair and the non-home network has a second MCC/MNC pair different from the first MCC/MNC pair. If the mobile station experiences an out-of-coverage condition (step **506**), the mobile station waits to regain signal coverage (step **508**). Alternatively, if the mobile station is powered off by the end user (step **506**), it waits for a user input signal to be powered back on (step **508**). If and when the mobile station regains network signal coverage, or is powered back on, the mobile station performs a scanning operation to identify all available networks within its coverage area (step **510**). The available networks may or may not include the home network of the mobile station (e.g. home network **402** of FIG. **4**). Per the current standards, the mobile station must then identify whether the previous network (e.g. non-home network **406**) is identified by the scanning operation (step **512**). The previous network may be referred to as the "Registered PLMN" or RPLMN. If the previous network is available at step **512**, the mobile station must select and operate with the previous network. This is true even if the HPLMN is available at that time. If the previous network is unavailable at step **512**, the mobile station selects the best network using network selection techniques (e.g. based on a prioritized network list) (step **516**). Similar problems exist when the mobile station is powered off while operating with the RPLMN and subsequently powered back on.

FIG. **6** is a flowchart for describing a method for "automatic" selection of a communication network with home network prioritization after network signal recovery and/or power-on of the present application. Such a method may be

12

employed in connection with devices shown and described above in relation to FIGS. **1-4**. For example, the steps may be performed by microprocessor **238** and communication subsystem **211** of FIG. **2**.

Beginning at a start block **602** of FIG. **6**, a mobile station registers and operates with a non-home communication network (step **604**) (e.g. non-home network **406** of FIG. **4**). The non-home network is not the home network of the mobile station; the home network has a first MCC/MNC pair and the non-home network has a second MCC/MNC pair different from the first MCC/MNC pair. If the mobile station experiences an out-of-coverage condition with the network (step **606**), the mobile station waits to regain signal coverage (step **608**). Alternatively, if the mobile station is powered off by the end user (step **606**), it waits for a user input signal to be powered back on (step **608**). If and when the mobile station regains network signal coverage, or is powered back on, the mobile station performs a scanning operation to identify all available networks within its coverage area (step **610**). The available networks may or may not include the home network of the mobile station (e.g. home network **402** of FIG. **4**).

In the present application, the mobile station then identifies whether the home network is available as indicated from the scanning operation (step **612**). If the home network (e.g. home network **402** of FIG. **4**) is available, the mobile station selects and registers with the home network for operation (step **614**). Thus, the home network is given first priority. If the home network is unavailable at step **612**, the mobile station identifies whether the previous network (e.g. non-home network **406**) is available as indicated from the scanning operation (step **616**). The previous network may be referred to as the "Registered PLMN" or RPLMN. If the previous network is available at step **616**, the mobile station continues operating with the previous network (step **618**). If the previous network is unavailable at step **616**, the mobile station selects, registers, and operates with the next "best" network using network selection techniques (e.g. based on a prioritized network list) (step **620**).

Thus, the above method provides a solution to a problem that the specifications do not clearly and specifically address: the situation where the RPLMN is not the HPLMN of the mobile station. If the RPLMN is not the HPLMN, and the HPLMN is available after the recovery from the out-of-coverage condition or after power-on, the standards specify that the mobile station is limited to selecting the non-home RPLMN (if available).

FIG. **7** is a flowchart for describing a method for "manual" selection of a communication network with home network prioritization after network signal recovery and/or power on of the present application. Such a method may be employed in connection with devices shown and described above in relation to FIGS. **1-4**. For example, the steps may be performed by microprocessor **238** and communication subsystem **211** of FIG. **2**. This method is preferably performed in the same device that performs the method of FIG. **6**.

Beginning at a start block **702** of FIG. **7**, a mobile station operates on a non-home communication network after an end-user manual selection of the non-home communication network (e.g. non-home network **406** of FIG. **4**) through the user interface (step **704**). The non-home network is not the home network of the mobile station; the home network has a first MCC/MNC pair and the non-home network has a second MCC/MNC pair different from the first MCC/MNC pair. If the mobile station experiences an out-of-coverage condition with the network (step **706**), the mobile station waits to regain signal coverage (step **708**). Alternatively, if the mobile station is powered off by the end user (step **706**), it waits for a user

input signal to be powered back on (step 708). If and when the mobile station regains network signal coverage, or is powered back on, the mobile station performs a scanning operation to identify all available networks within its coverage area (step 710). The available networks may or may not include the home network of the mobile station (e.g. home network 402 of FIG. 4).

The mobile station identifies whether the previous manually-selected non-home network (e.g. non-home network 406 of FIG. 4) is available as indicated from the scanning operation (step 712). This previous network may be referred to as the “Registered PLMN” or RPLMN. If the previous manually-selected non-home network is available at step 712, the mobile station identifies whether the home network (e.g. home network 402 of FIG. 4) is available as indicated from the scanning operation (step 714). If the home network is unavailable at step 714, then the mobile station continues operating with the previous manually-selected non-home network (step 716).

If the home network is available as identified in step 714, then the mobile station causes a visual input prompt to be displayed in its visual display for manual selection of the home network by the end user (step 718). For example, the visual input prompt may read “SELECT HOME NETWORK? YES or NO”. The mobile station may further cause the sounding of an audible alert from the user interface. If the end user manually selects the home network in step 718 (“Yes”), then the mobile station registers and operates with the home network (step 720). If no user input is received but rather an expiration of a predetermined time period occurs at step 718 (“Time Out”), or the end user does not wish to utilize the home network at step 718 (“No”), then the mobile station selects, registers, and operates with the previous manually-selected non-home network (step 716).

If the previous manually-selected non-home network is unavailable at step 712, the mobile station identifies whether the home network (e.g. home network 402 of FIG. 4) is available as indicated from the scanning operation (step 722). If the home network is available as identified in step 722, then the mobile station causes a visual input prompt to be displayed in its visual display for manual selection of the home network by the end user (step 724). For example, the visual input prompt may read “SELECT HOME NETWORK? YES or NO”. The mobile station may further cause the sounding of an audible alert from the user interface. If the end user manually selects the home network in step 724 (“Yes”), then the mobile station registers and operates with the home network (step 726). If no user input is received but rather an expiration of a predetermined time period occurs in step 724 (“Time Out”), then the mobile station selects, registers, and operates with the home network (step 726).

If the home network is unavailable as identified back in step 722, then the mobile station causes the list of all available networks to be displayed for manual selection by the end user (step 728). If the end user manually selects a network in the displayed list of all available networks at step 728 (“Selection”), then the mobile station registers and operates with the manually selected network (step 730). If no user input is received but rather an expiration of a predetermined time period occurs in step 728 (“Time Out”), then the mobile station selects, registers, and operates with any network which provides only emergency service (i.e. no service—including voice and data communication service—other than emergency service such as “911” calls) (step 732).

Advantageously in FIG. 7, even in a manual selection mode where choices are made by the end user, the mobile station makes the end user aware of recent availability of the home

network in a timely and unobtrusive fashion. Overall, the mobile station helps facilitate the selection of the best network for the end user even in the manual selection mode.

Final Comments. Network selection methods and apparatus with home network prioritization after network signal recovery and/or power on have been described. In one illustrative example involving automatic network selection, a mobile station selects and operates with a non-home communication network. The mobile station then experiences an out-of-coverage condition (or a power down condition) but subsequently regains signal coverage (or is powered back on). In response, the mobile station scans to identify a plurality of communication networks in its coverage area. If a home communication network (e.g. HPLMN) is identified as being available, the mobile station selects and operates with the home communication network. Otherwise, if the previous non-home communication network (e.g. RPLMN) is identified as being available, the mobile station continues operation with the previous non-home communication network.

A mobile station having an “automatic” network selection technique of the present application includes a wireless transceiver, an antenna coupled to the wireless transceiver, and one or more processors coupled to the wireless transceiver. The one or more processors are configured to select a communication network with which to communicate by selecting and operating with a communication network and, after regaining signal coverage from an out-of-coverage condition with the communication network, or after powering on from a power-off state, causing the following acts to be performed: scanning to identify a plurality of communication networks in a coverage area within which the mobile station is operating; if a home communication network of the mobile station is identified as being available by the scanning, selecting and operating with the home communication network; and otherwise, if the communication network is identified as being available by the scanning, continuing operation with the communication network.

A communication system having an “automatic” network selection technique of the present application includes a first communication network, a second communication network, and one or more mobile stations which are operable with the first and the second communication networks. The one or more mobile stations have the second communication network designated as a home communication network. The one or more mobile stations are operative for selecting and operating with the first communication network and, after regaining signal coverage from an out-of-coverage condition with the first communication network, or powering on from a power-off state, causing the following acts to be performed: scanning to identify a plurality of communication networks in a coverage area within which the mobile station is operating; if the home communication network of the mobile station is identified as being available by the scanning, selecting and operating with the home communication network; and otherwise, if the first communication network is identified as being available by the scanning, continuing operation with the communication network.

In a manual network selection mode, a user input from a user interface for manually selecting a communication network with which the mobile station will operate is received. After regaining network signal coverage from an out-of-coverage condition, or after powering on from a power-off state, the mobile station scans to identify a plurality of communication networks in a coverage area. If the previous manually-selected network (e.g. the RPLMN) is available but the home network is unavailable as identified by the scanning, then the mobile station continues to operate with the previous manu-

15

ally-selected network. If a home communication network (e.g. HPLMN) is identified as being available by the scanning, however, the mobile station causes a visual input prompt to be displayed for manual selection of the home network.

A mobile station having a “manual” network selection technique of the present application includes a user interface, a wireless transceiver, an antenna coupled to the wireless transceiver, and one or more processors coupled to the wireless transceiver. The one or more processors being configured to provide for the selection of a communication network by receiving a user input from the user interface for manually selecting a communication network for the mobile station; selecting and operating with the manually-selected communication network in response to the user input; and after regaining signal coverage from an out-of-coverage condition with the manually-selected communication network, or after power-on from a power-off state, causing the following acts to be performed: scanning to identify a plurality of communication networks in a coverage area within which the mobile station is operating; if, as identified from the scanning, the communication network is available but a home communication network is unavailable: continuing operations with the communication network; and if, as identified from the scanning, a home communication network of the mobile station is available: causing a visual input prompt to be displayed for manually selecting the home communication network.

A communication system having a “manual” network selection technique of the present application includes a first communication network, a second communication network, and one or more mobile stations which are operable with the first and the second communication networks. The one or more mobile stations have the second communication network designated as a home communication network. The one or more mobile stations are operative for receiving a user input from a user interface of the mobile station for manually selecting the first communication network for operation; selecting and operating with the first communication network in response to the user input; and after regaining signal coverage from an out-of-coverage condition with the first communication network, or after a power-on from a power-off state, causing the following acts to be performed: scanning to identify a plurality of communication networks in a coverage area within which the mobile station is operating; if, as identified from the scanning, the communication network is available but the second communication network is unavailable: continuing operations with the first communication network; and if, as identified from the scanning, the second communication network of the mobile station is available: causing a visual input prompt to be displayed for manually selecting the second communication network.

The above-described embodiments of invention are intended to be examples only. Alterations, modifications, and variations may be effected to particular embodiments by those of skill in art without departing from scope of invention, which is defined solely by claims appended hereto.

What is claimed is:

1. A network selection method for a mobile station, comprising:
 - selecting and operating with a non-home public land mobile network (PLMN), the non-home PLMN being designated as a registered PLMN (RPLMN) of the mobile station;
 - after regaining signal coverage from an out-of-coverage condition with the RPLMN, performing the following acts of:

16

- identifying a plurality of PLMNs in a coverage area within which the mobile station is operating;
 - when a home PLMN (HPLMN) of the mobile station is identified as being available, selecting and operating with the HPLMN; and
 - otherwise, when the HPLMN is not identified as being available and the RPLMN is identified as being available, selecting and operating with the RPLMN.
2. The method of claim 1, further comprising:
 - otherwise, when the RPLMN is identified as being unavailable, selecting and operating with an alternate PLMN based on a list of PLMNs.
3. The method of claim 1, further comprising:
 - otherwise, when the RPLMN is identified as being unavailable, receiving a selecting of an alternate PLMN.
4. The method of claim 1, further comprising:
 - otherwise, when the RPLMN is identified as being unavailable, presenting a selection of at least one available alternate PLMN.
5. The method of claim 1, further comprising:
 - otherwise when no HPLMNs are identified and no manual PLMN selection has occurred: selecting and operating with an alternate PLMN which provides only emergency services.
6. A mobile station, comprising:
 - a wireless transceiver configured for communications with a public land mobile network (PLMN);
 - one or more processors coupled to the wireless transceiver; the one or more processors being configured to perform PLMN selection, so that the mobile station is configured to:
 - select and operate with a non-home PLMN, the non-home PLMN being designated as a registered PLMN (RPLMN) of the mobile station;
 - after regaining signal coverage from an out-of-coverage condition with the RPLMN, perform the following actions to:
 - identify a plurality of PLMNs in a coverage area within which the mobile station is operating;
 - when a home PLMN (HPLMN) of the mobile station is identified as being available, select and operate with the HPLMN; and
 - otherwise, when the HPLMN is not identified as being available and the RPLMN is identified as being available, select and operate with the RPLMN.
7. The mobile station of claim 6, further configured to:
 - otherwise, when the RPLMN is identified as being unavailable, select and operate with an alternate PLMN based on a list of networks PLMNs.
8. The mobile station of claim 6, further configured to:
 - otherwise, when the RPLMN is identified as being unavailable, receive a selecting of an alternate PLMN.
9. The mobile station of claim 6, further configured to:
 - otherwise, when the RPLMN is identified as being unavailable, present a selection of at least one available alternate PLMN.
10. The mobile station of claim 6, further configured to:
 - otherwise when no HPLMNs are identified and no manual PLMN selection has occurred: select and operate with an alternate PLMN which provides only emergency services.
11. A communication system, comprising:
 - a first public land mobile network (PLMN);
 - a second PLMN;
 - one or more mobile stations configured to operate with the first and the second PLMNs,

17

the one or more mobile stations having the first PLMN designated as a home PLMN (HPLMN) and the second PLMN not being designated as an HPLMN;

the one or more mobile stations being configured to perform a PLMN selection method by:

selecting and operating with the second PLMN, the second PLMN being designated as a registered PLMN (RPLMN) of the mobile station;

after regaining signal coverage from an out-of-coverage condition with the RPLMN, performing the following acts of:

identifying a plurality of PLMNs in a coverage area within which the mobile station is operating;

when the HPLMN is identified as being available, selecting and operating with the HPLMN; and

otherwise, when the HPLMN is not identified as being available and the RPLMN is identified as being available, selecting and operating with the RPLMN.

12. The communication system of claim 11, wherein the one or more mobile stations are further configured for:

18

otherwise, when the RPLMN is identified as being unavailable, selecting and operating with an alternate PLMN based on a list of networks PLMNs.

13. The communication system of claim 11, wherein the one or more mobile stations are further configured for:

otherwise, when the RPLMN is identified as being unavailable, receiving a selecting of an alternate PLMN.

14. The communication system of claim 11, wherein the one or more mobile stations are further configured for:

otherwise, when the RPLMN is identified as being unavailable, presenting a selection of at least one available alternate PLMN.

15. The communication system of claim 11, wherein the one or more mobile stations are further configured for:

otherwise when no HPLMN are identified and no manual PLMN selection has occurred:

selecting and operating with an alternate PLMN which provides only emergency services.

* * * * *