



SharePoint Forum Web Part





Copyright © 2005-2008 KWizCom Corporation. All rights reserved.

Company Headquarters

KWizCom
148 Castle Rock Dr.
Richmond Hill, Ontario
L4C 5K5, Canada

E-mail: info@KWizCom.com
Web site: <http://www.KWizCom.com>

Sales

E-mail: sales@KWizCom.com
Telephone: +1-905-370-0333



Table of Contents

Introduction	4
Product Overview _____	5
Key Features _____	7
Installation	8
Software prerequisites _____	8
Installation Procedure _____	8
Post Installation _____	9
Component Localization	9
Resource File Editor utility structure _____	9
Translating a KWizCom component _____	11
Use the component in your preferred language _____	11
Translating the Editor tooltips _____	12
Support right to left languages _____	12
Component Activation	13
Administrator Guide	15
Introduction _____	15
Web Part Properties & Configuration Options _____	15
FAQ	18
What's the purpose of the SharePoint Forum web part? _____	18
Does it work on WSS/MOSS? _____	18
Do I have to install anything on my company's client-PCs? _____	19
Can I change the view in wich the discussions are viewed? _____	18
Can I change the view in wich the replies are viewed? _____	18
Version Release Notes	20
Version History _____	20
This Version's Known Issues/Limitations _____	20
Technical Support	21



Introduction

KWizCom Forum Web Part is the best solution to add forums to your SharePoint site. Give your users the power of a real internet forum.

KWizCom Forum Web Part supports MOSS2007/WSS3.0

This document provides all the information needed to install, evaluate and deploy this KWizCom product:

1. Product overview
2. Installation guide
3. Component activation
4. Administrator guide
5. FAQ
6. Version release notes

Product Overview

Provide your users with rich Web 2.0 user experience – now available for SharePoint Discussions!

KWizCom Forum Web Part enhances the SharePoint discussions list and provides a more “web”-oriented, great-looking and easy to use groups interface.

Add the KWizCom forum web part to any page on your SharePoint site and connect it to any standard discussion list on the same site or to lists located in other SharePoint sites and provide a hierarchical, sleek Web discussions interface!

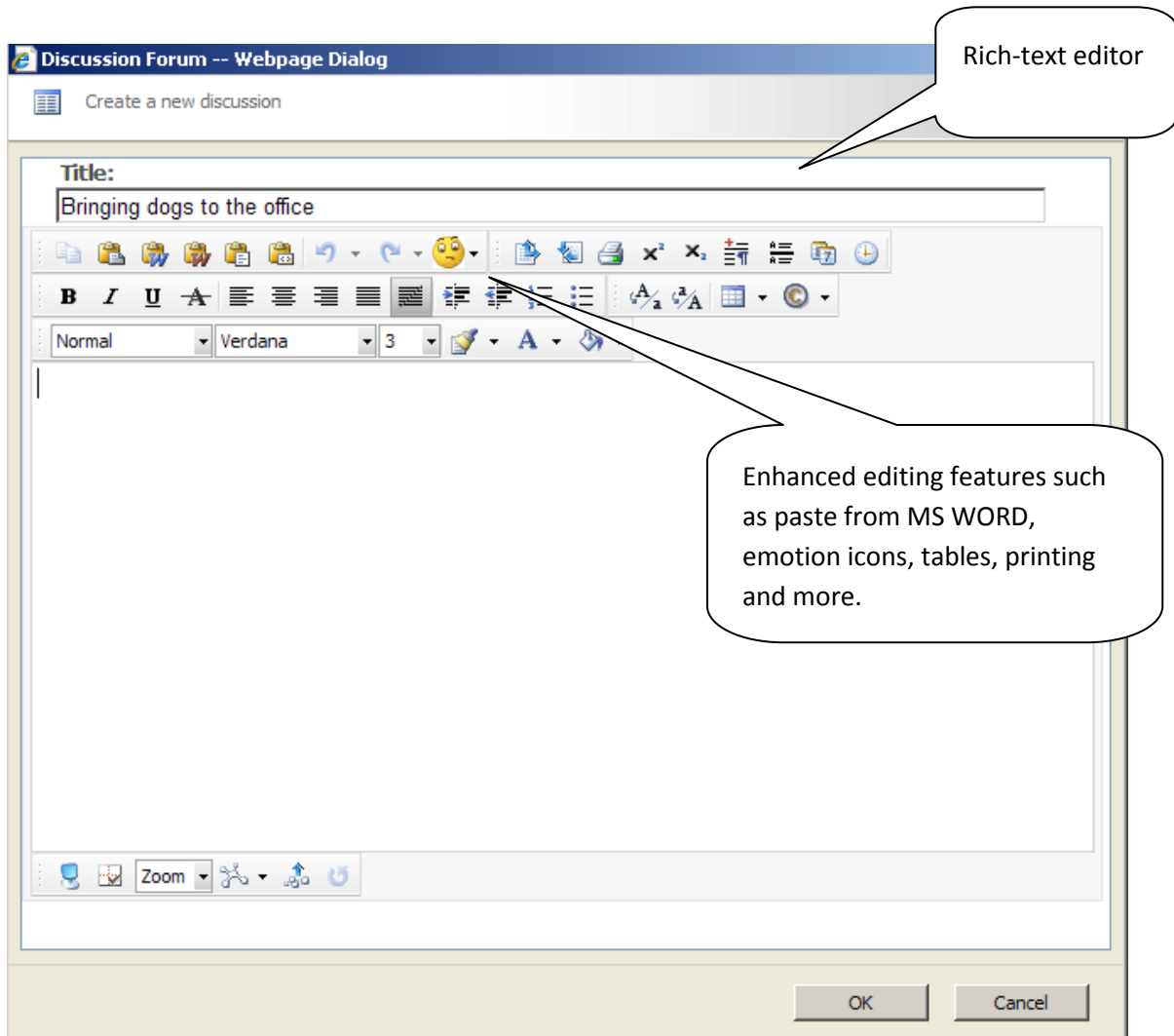


KWizCom Forum

Create a new discussion

- + **Bringing dogs to work** | Reply | 2008/03/30 | 09:33 | System Account
- + **best idea! wait 't...** | Reply | 2008/03/30 | 09:35 | Luis Bonifaz
- + **Lack of parking space** | Reply | 2008/03/30 | 09:34 | Luis Bonifaz
- + **Smile more** | Reply | 2008/03/30 | 10:15 | Luis Bonifaz

Instead of the regular redirection SharePoint behavior (every click redirects you to another page), KWizCom forum web part provides a more “smooth” groups interface using popup window for adding/editing a post:



The Forum web part includes an enhanced rich-text editor enabling users to better express themselves while editing their posts.



Key Features

Feature	KWizCom Forum Web Part	SharePoint Discussion List
Support MOSS 2007 / WSS 3.0	✓	✓
Connect to discussion lists located in other sites or sites collection	✓	
Quick reply using pop-up window	✓	
Show discussions with all reply messages in one hierarchical view	✓	
Enable Creating new discussions without navigating to the list page	✓	
Support emotion icons	✓	
Enable filtering by views	✓	
Enhanced rich text editor	✓	
Support Mozilla Firefox	✓	✓
Multi-lingual (standard for all KWizCom components)	✓	



Installation

Software prerequisites

Server Requirements

1. Microsoft Windows SharePoint Services 3.0 (WSS 3.0) or
2. Microsoft Office SharePoint Server 2007 (MOSS 2007)

Client PC Requirements

1. Microsoft Internet Explorer 6+ SP1 / Microsoft Internet Explorer 7 / Mozilla Firefox 2+

Installation Procedure

The **KWizCom Forum Web Part** must be installed on the SharePoint server where it will be displayed.

1. Log in as local admin to your SharePoint server.
2. Unzip the **KWizCom Forum Web Part** zip file on your WSS/MOSS server.
3. Double-click the .msi file in order to begin the web installation.
4. When the installation process is complete it will recycle all application pools automatically.

Post Installation

1. After completion of the installation, you will see a new KWizCom entry in Windows **Start -> All Programs -> KWizCom** containing the following programs:

 **About SharePoint Forum Web Part**

Display General Information about the component.



Activate SharePoint Forum Web Part

This utility enables you (the SharePoint Administrator) to activate the downloaded evaluation version.

2. When you browse your SharePoint Portal/ Windows SharePoint services site, a new SharePoint Forum Web Part will be available for you under "Miscellaneous" group in the "Add Web Part" dialog or under "Server gallery" in the "Advanced Web Part Gallery".

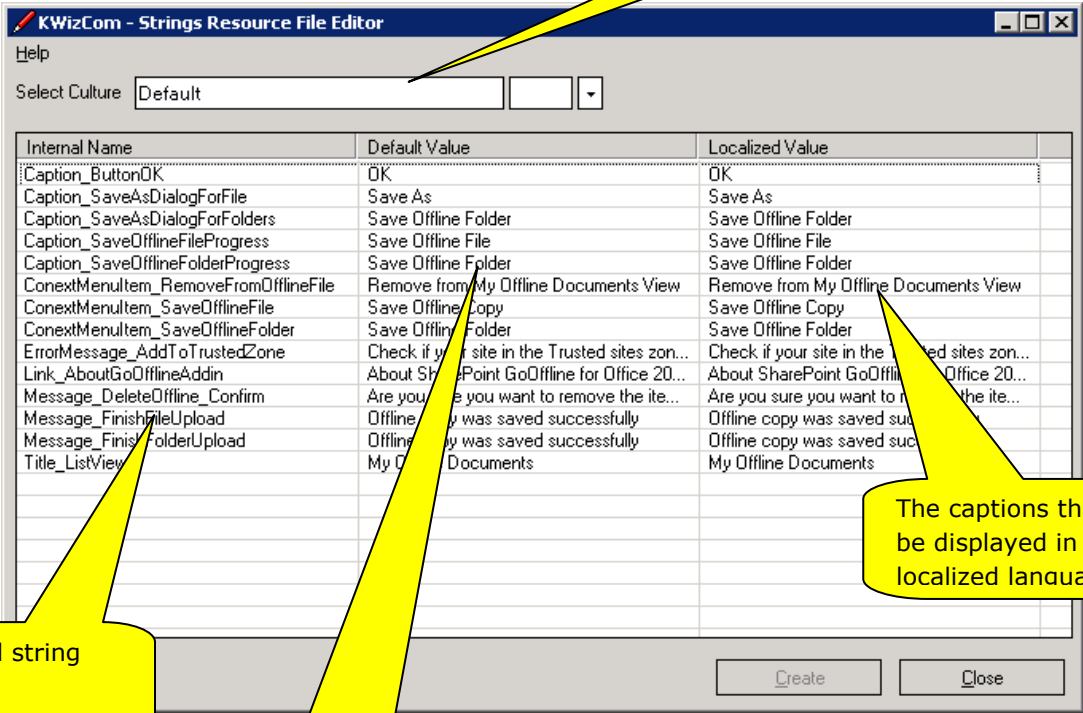
Component Localization

This KWizCom component comes with localization utility called "Resource File Editor" that enables translation of the component user interface to any required language.

This section describes this utility and the translation process.

Resource File Editor utility structure

This utility displays the following dialog that enables the administrator to translate every displayed string (captions, menu items, user-messages) to the required target language.



Here you select the target language

Internal Name	Default Value	Localized Value
Caption_ButtonOK	OK	OK
Caption_SaveAsDialogForFile	Save As	Save As
Caption_SaveAsDialogForFolders	Save Offline Folder	Save Offline Folder
Caption_SaveOfflineFileProgress	Save Offline File	Save Offline File
Caption_SaveOfflineFolderProgress	Save Offline Folder	Save Offline Folder
ConextMenuitem_RemoveFromOfflineFile	Remove from My Offline Documents View	Remove from My Offline Documents View
ConextMenuitem_SaveOfflineFile	Save Offline Copy	Save Offline Copy
ConextMenuitem_SaveOfflineFolder	Save Offline Folder	Save Offline Folder
ErrorMessage_AddToTrustedZone	Check if your site in the Trusted sites zon...	Check if your site in the Trusted sites zon...
Link_AboutGoOfflineAddin	About SharePoint GoOffline for Office 20...	About SharePoint GoOffline for Office 20...
Message_DeleteOffline_Confirm	Are you sure you want to remove the ite...	Are you sure you want to remove the ite...
Message_FinishFileUpload	Offline copy was saved successfully	Offline copy was saved successfully
Message_FinishFolderUpload	Offline copy was saved successfully	Offline copy was saved successfully
Title_ListView	My Offline Documents	My Offline Documents

All internal string names

The default displayed caption for each string in English

The captions that should be displayed in your localized language

The application displays 2 controls:

- **"Select Culture" drop-down** – contains a list of target languages.
- **Strings grid** – This grid contains all the strings displayed by the component.

The grid includes 3 columns:

- a. Internal Name – This column displays the internal name of each string (read only).
- b. Default Value – The default displayed value in English (read only).
- c. Localized Value – The translated value in the selected language. This is where you enter the required translated value.

Once you finish translating all the component strings, click "Create" and a resource file will be created. This resource file will automatically be used by the component upon changing the user language on your server.

For example: In an MS SharePoint-based component, you should create a site using your required SharePoint Language Pack. According to the SharePoint site language, the relevant language's resource file will be used by the component.

Translating a KWizCom component

1. On your Windows task bar, select:

Start->All Programs->KWizCom->SharePoint Forum web part-> 
Resource Language Editor for SharePoint Forum Web Part

2. Select your target language on the "Select Culture" drop-down list.
3. Translate all the displayed strings in the strings grid by entering a translated value in the "Localized Value" column.
4. Click the "Create"/"Update" button in order to create/save a resource file for the selected target language.

5. If you want to create additional resource files for more target languages, simply repeat stages 2-4 for each language.
6. Close the utility by clicking the "Close" button.

Translating the Editor Tooltips

The Editor Captions are in English, you can translate them in the following manner:

1. Copy
~layouts/kwizcom_discussionforum/radcontrols/editor/localization/en-US to
~layouts/kwizcom_discussionforum/radcontrols/editor/localization/[required
locale code]
2. Edit main.xml in the new local's folder and change the texts to the local
language
3. Edit ~layouts/kwizcom_discussionforum/newdiscussionpopup.aspx and
~layouts/kwizcom_discussionforum/replypopup.aspx by adding:
language="[locale code]" within the tag <radE:RadEditor>



```
<?xml version="1.0" encoding="utf-8" ?>
- <localization>
  <string id="IncreaseSize">Increase Size</string>
  <string id="DecreaseSize">Decrease Size</string>
  <string id="PageProperties">Page Properties</string>
  <string id="ConvertToUpper">Convert to upper case</string>
```

Support right to left languages

In order for the writing to start from the right once the Editor is opened follow the next steps:

1. Edit
~layouts/kwizcom_discussionforum/radcontrols/editor/skins/default2006/

editorcontentarea.css

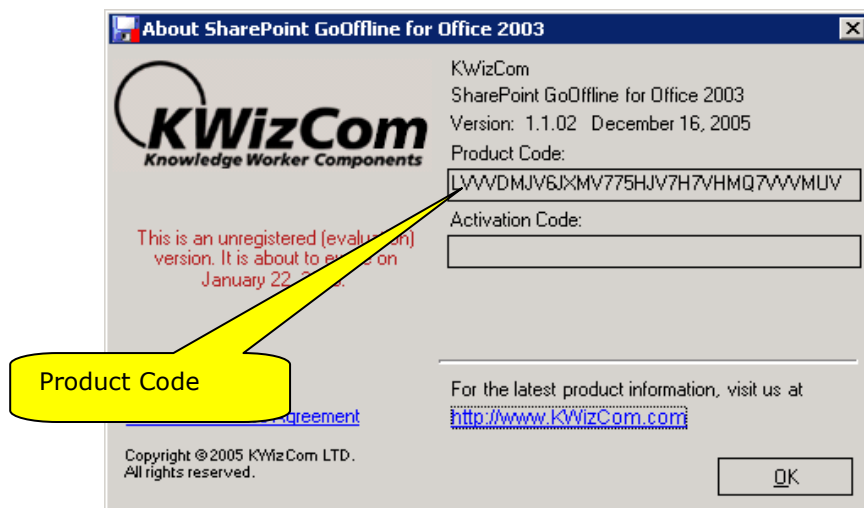
2. Change the class .RadEContent, .RaEContentBordered by adding `text-align:right; direction:rtl;`
3. Clear the browser cache (shift+F5) and restart the browser for css file to be reread.

Component Activation

KWizCom components are available for evaluation prior to purchase. This way you can try our components and verify that they indeed meet your needs. An evaluation version for each KWizCom component contains all features of the component's production version. The only difference is that an evaluation version is time-limited, and will operate for a period of one month.

Once you decide to order a KWizCom component, you will need to follow the following steps:

1. Order the component on the KWizCom website – www.kwizcom.com.
2. Send us the installed evaluation version's product Code (you will see the product Code on the "About" product page:



Please use the [Activation Request web form](#), on KWizCom web site to send us



your product code.

3. Get the component activation key – this key will be sent to you by email once your order is processed.

4. Activate your installed evaluation version -
click **Start -> All Programs -> KWizCom -> SharePoint Forum Web Part -> Activate SharePoint Forum Web Part**

Enter the received Activation Code to the "Activation Code" textbox.
Click the "Activate Product" button.

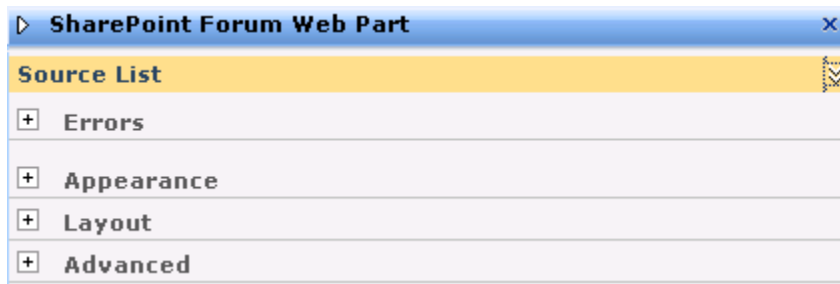
Administrator Guide

Introduction

When you browse your SharePoint server/ Windows SharePoint services site, a new **KWizCom Forum Web Part** can be added from "Miscellaneous" group in the "Add Web Part" dialog.

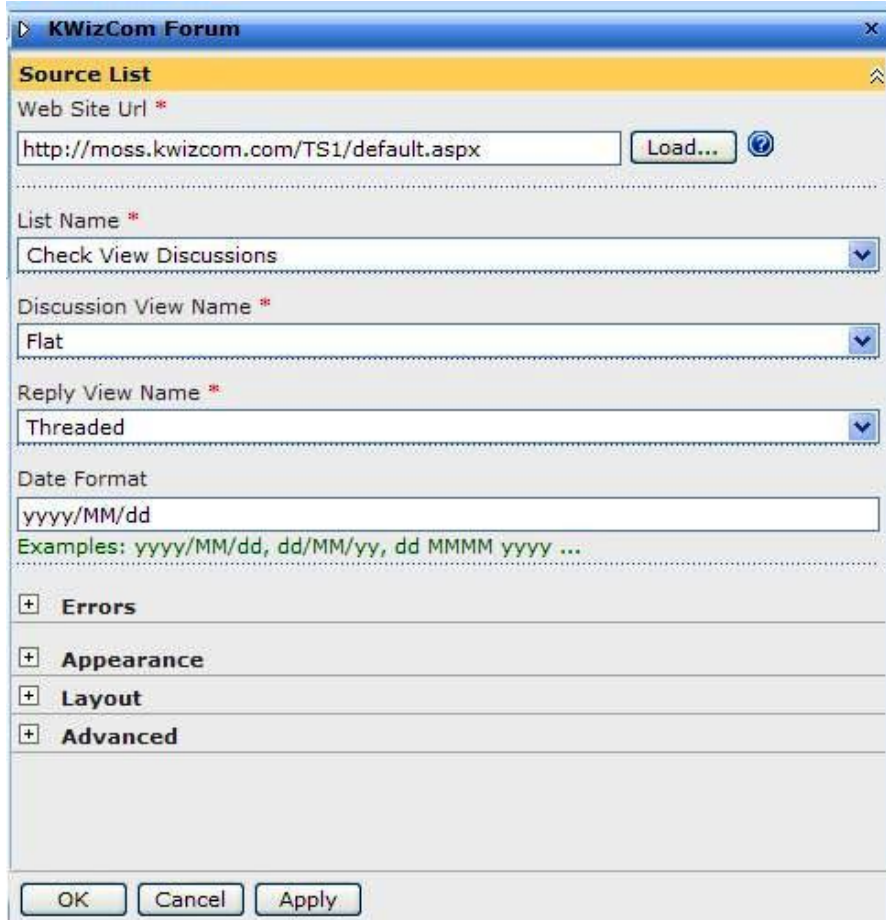
Web Part Properties & Configuration Options

The web part's properties are grouped in 2 categories:



The following sections provide details about each category.

Source List



This section includes Forum list connection details:

- Web Site Url- SharePoint site url where your discussion list is located.
- List Name – choose the source discussion list.
- Discussion view name – Choose the view in which you want the discussions to be viewed in

The default options are:

View	Description
Flat	Orders the discussions in ascending order according to the order the items were added
Subject	Orders the discussions in ascending order from the

	latest item changed and on
Threaded	Orders the discussions according to the threads

- Reply view name – Choose the view in which you want the replies to be viewed in.

It has the same default options as the “Discussions view name”

When you create a new view for replies use the “Threaded view” as template, this will set the first column to be the “Threading” column as required by SharePoint platform in this case.

- Date Format- Enter a date format according to the examples.

Errors

Errors

Show Errors

This section provides you with the option to show errors when the web part is not working properly (for debug & support purposes).

Check this option to view error details and uncheck it if these details do not need to be shown.



FAQ

What's the purpose of the SharePoint Forum web part?

The KWizCom SharePoint Forum Web Part enables you to display and use your SharePoint discussion in a much more convenient, "Web 2.0" way.

Does it work on WSS/MOSS?

The KWizCom SharePoint Forum web part works both on WSS 3.0 and MOSS 2007.

Do I have to install anything on my company's client-PCs?

No. KWizCom SharePoint Forum Web Part is a server installation.

Can I filter the displayed discussion/replies?

Yes. Define the view for the discussion list and then choose the view you've created in the "Discussion view name".



Version Release Notes

Primary Software	
Version	1.2.00
Base version	1.1.00
Release date	December-22-2008
Sub-Modules	
Module	Version
n/a	n/a

Version History

CR #	Description
Version 1.2.00 , December-22-2008	
16	Fixed Bug: The "Discussion view name" does not display the items according to the chosen view and neither the "reply view name"
27	Fixed Bug: The rich text editor doesn't work properly with Firefox
29	Fixed Bug: Posting a reply when there are multiple IIS headers fails
30	Fixed Bug: Multilingual support not complete and issues with RTL
31	Fixed Bug: There cannot be added a new reply or a new post in Firefox and Google Chrome
49	Fixed Bug: Clicking "Find and Replace" button renders Error



Technical Support

You can obtain technical support using any of the following methods:

The KWizCom Web site

The KWizCom website at www.KWizCom.com contains the most updated valuable information, including:

- Answers to frequently asked questions (FAQ's) about our products – usability and technical questions.
- Product updates, which provide you with bug fixes and new features.

The Web Form

For technical support through the Internet, please fill in our [support web form on our web site](#)

For more information on technical support, please review our [support programs page](#).