

# CandleQuote

## User's Manual

Last update: 2014/02

LEMPART© 2010-2014

# Table of contents

1.	Introduction .....	2
	Disclaimer .....	2
2.	Technical requirements.....	2
3.	Purchasing and installation process.....	3
	Creating user's account .....	3
	Purchasing process .....	3
	Installing your application .....	4
	Upgrading your application .....	6
	Uninstalling your application.....	7
4.	User interface.....	7
	Main functionality.....	7
	Adding defined symbols .....	9
	Adding symbols based on user's list .....	10
	Updating data .....	11
	Exporting data to CandleScanner format .....	12
	Exporting data to MetaStock format .....	12
	Exporting data to text files (ASCII format).....	13
	Automating exporting process using schemas .....	14
5.	Troubleshooting .....	14
6.	Frequently Asked Questions (FAQ) .....	15

# 1. Introduction

The document is written for those who want to learn about CandleQuote application – tool allowing you to easily get free market quotes data from YAHOO! Finance and export it to your favourite technical analysis application. You can find in this document all necessary informations on how to buy, install and use the application. If you need more help please send us an email at [contact@candlescanner.com](mailto:contact@candlescanner.com).

Buying license of CandleQuote you gain the following:

- lifetime license
- free upgrades for 12 months since the date of purchase
- 50% discount on upgrades past initial 12 months period
- free technical support for 12 months since the date of purchase

## Disclaimer

CandleQuote is fully dependent on the data provided by YAHOO! Finance.

Please note that buying CandleQuote you are not buying data as such which at the moment is free of charge and is not a property of LEMPART company. You are acquiring software which makes the process of getting this data from YAHOO! Finance simple.

We are not responsible for the data quality or its availability. We also do not guarantee that data provided by YAHOO! Finance will remain free in the future.

Buying CandleQuote you agree with all these conditions and restrictions. No refunds will be given after buying the application.

Full text of Terms & Conditions for Ordering and Using LEMPART software you can find at:  
[http://candlescanner.com/terms\\_and\\_conditions](http://candlescanner.com/terms_and_conditions).

# 2. Technical requirements

In order to successfully run and use the CandleQuote application you need to have a computer with one of the following operating systems:

- **Windows XP (any edition)**
- **Windows Vista (any edition)**
- **Windows 7 (any edition)**
- **Windows 8 (any edition)**

Both versions are supported: 32-bit and 64-bit.

Additionally you need to have **.NET Framework 4.0** or above installed on your computer. If this is not the case please visit <http://microsoft.com> website to download it and install it first on your machine prior installing CandleQuote.

### 3. Purchasing and installation process

#### Creating user's account

In order to buy application you need to create an account at <http://candlescanner.com> website. If you are already registered user, please go to the next section about purchasing process.

To create user's account please navigate to <http://candlescanner.com> and click **Create account** button located in the top left corner of the page. Please provide required data and press **Create account** button. If the operation is successfully completed you will receive an email on the provided address with password.

To login please navigate to <http://candlescanner.com> and click **Login** button located in the top left corner of the page. Use the password which was sent during creation of the account.

You can change the password when you are logged in on the website. Please click **Dashboard** in the top right side of the page and then click **Change password**. Please note that password needs to contain at least 5 characters. See Figure 1 for details.

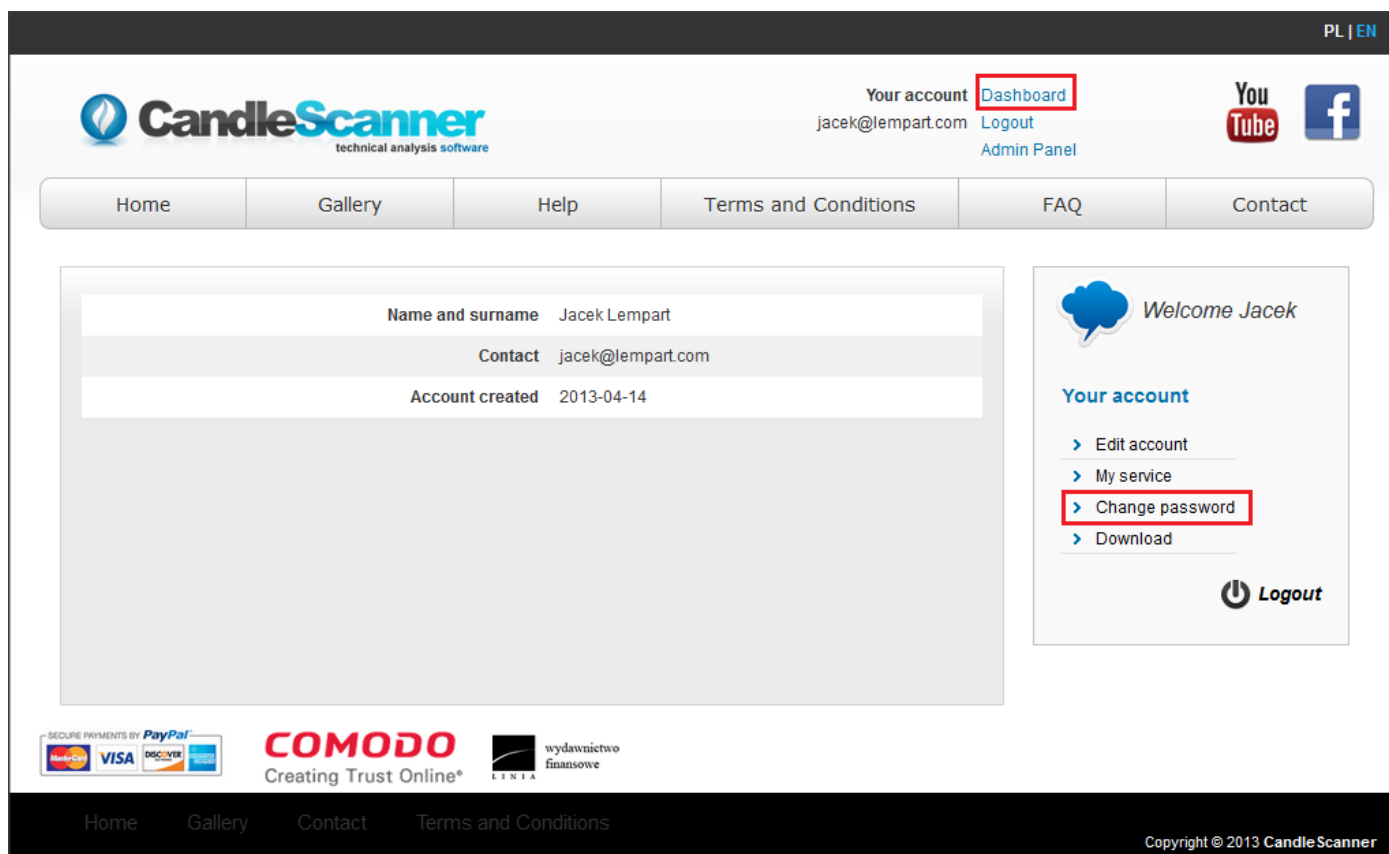


Figure 1. Page from which you can change your password.

#### Purchasing process

All payments are done via PayPal™ service. The whole process of buying CandleQuote is fully automated. Our shop is open 24 hours a day, 7 days a week.

In order to purchase CandleQuote you need to be logged in at <http://candlescanner.com> (if you do not have an account please go to previous section of this manual for more instructions). Then you can click on the **Dashboard** -> **My service**. In the **Buy product** tab you need to select **CandleQuote** (see Figure 2). You need to confirm that you

confirm and accept Terms & Conditions for ordering and using LEMPART products. Then you can click **Purchase** button. You will be navigated to PayPal website where you can complete payment process.

After successful payment you receive an email with instructions how to download and install application on your computer. Also you will be automatically navigated back to <http://candlescanner.com> website.

## WARNING!

We deeply encourage you to download free trial version (fully operational for 7 days) and see if the application suits your expectations and needs. **There are no refunds for already bought license.**

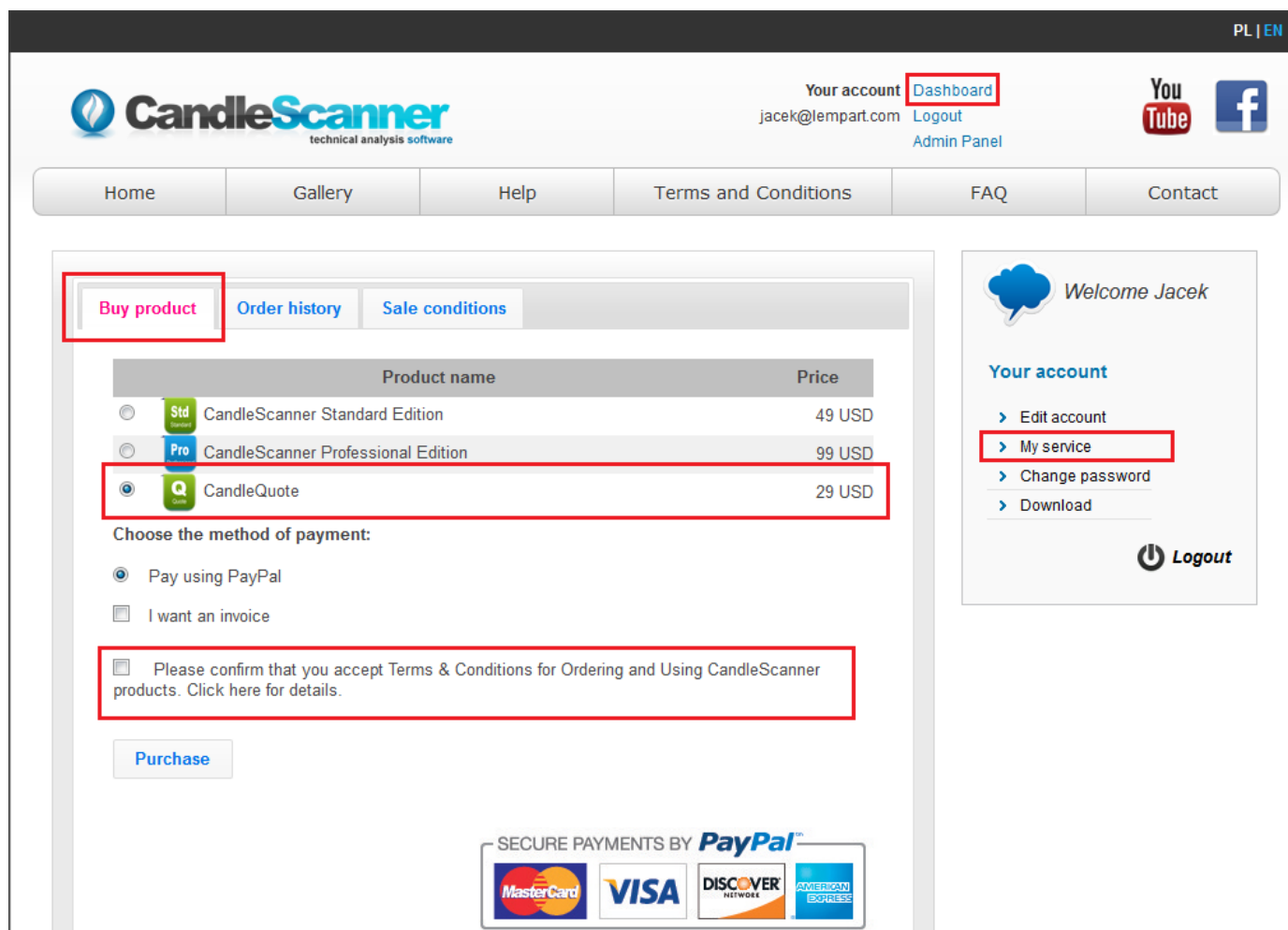


Figure 2. Page from which you can buy CandleQuote.

## Installing your application

In order to start installation of CandleQuote you need to download it first. The download link you can find in email which you receive after purchase. You can also navigate to the download link via **Dashboard** -> **Download** and then click on the CandleQuote. Please note that you need to be logged in at <http://candlescanner.com> in order to download the installation file.

After successful download of the installation file you need to run it (double click on it). The process is very straightforward and does not require any specific technical knowledge from the user. Simply follow the steps as they are displayed on the screen. The options which can be changed by the user during installation process are as follows:

- Language in which you want to use the application
- Location where you want to store the application on your computer
- Whether the user wants or not the shortcut to be created on the desktop
- Whether the user wants or not to run automatically the application straight after the installation process (it is recommended to run it automatically at the end of installation process to make registration easier).

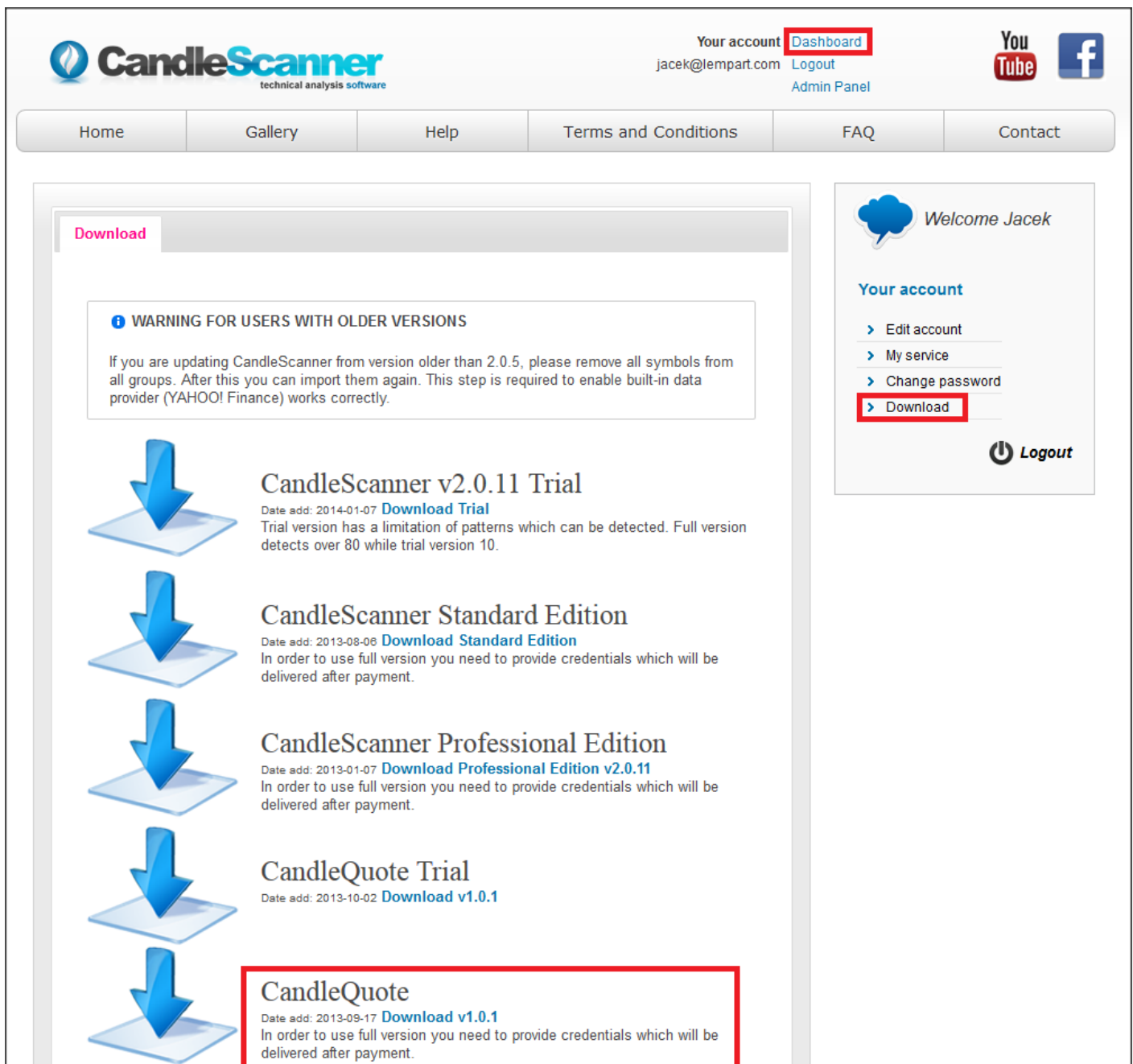


Figure 3. Page from which you can download CandleQuote installation file.

## WARNING!

If the user will not select the option to run the application automatically after installation ends, the first start of the application has to be performed with the rights of Administrator user. In order to do it you need to right-click on the application icon and select the option **Run as administrator**.

## WARNING!

While downloading the file you may see warnings from your operating system that the file to be downloaded is potentially dangerous for your computer. All files downloaded from <http://candlescanner.com> are digitally signed giving you guarantee that are absolutely secure for your machine and were not tampered by anyone. In order to check if the downloaded file is digitally signed right click on it, select **Properties** and then go to **Digital Signatures** tab which contains the details of the digital signature. If the **Digital Signatures** tab does not exist it means that file is not signed by LEMPART company and can be potentially dangerous (could be tampered by anyone).

When the user starts the CandleQuote for the first time he/she will be asked to provide registration data first (see Figure 4). This is exactly the same data which was used during opening an account on the website in order to buy the product.



The screenshot shows the 'CandleQuote' application window. On the left, there is a 'Login' section with a text box for 'Login' containing 'jacek@lempart.com' and a password field with masked characters. Below these is a 'Register' button. To the right of the login section is a 'Home' button. The main area of the window features the 'CandleQuote' logo (a green circle with a white 'Q') and the text 'market quotes'. Below the logo, there is a paragraph of text: 'CandleQuote is a tool allowing you to download free end-of-day (EOD) data using YAHOO! Finance. Downloaded data is written in form of a text file (ASCII file in CSV format). This data is compatible with any trading tool supporting EOD ASCII files. You can download actually any quotes which are provided by YAHOO! Finance. Currently it is around 60 stock exchanges worldwide. You simply pay once \$29 for application and get free quotes data forever.' At the bottom left, it says 'Copyright @ CandleScanner.' and at the bottom right, there is a 'Close' button.

Figure 4. First run of CandleQuote after installation requires entering registration data.

## Upgrading your application

Whenever newer version is available for download you can simply perform the same steps as for normal installation. It is recommended to remove first the existing application to avoid any problems or conflicts with existing application. Before this we highly recommend to backup any files or settings from your existing installation.

## Uninstalling your application

Your application can be easily removed from your computer via Control Panel of your operating system: **Control Panel** -> **Uninstall a program**, select the CandleQuote and press **Uninstall** button. Follow instructions to complete the process.

## 4. User interface

### Main functionality

Basically all the core functionality of CandleQuote is reachable from the **File** menu (see Figure 5).

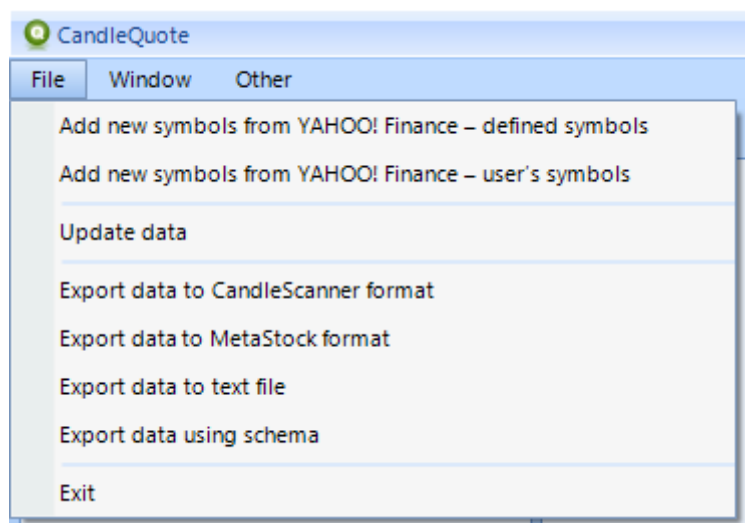


Figure 5. File menu: from here you can perform all CandleQuote operations: import, export and update quotes data.

The main functionality of CandleQuote is:

- **Importing** quotes data. This is step in which user specifies what data he would like to download. You can specify predefined markets, indexes and their components. Also you can provide them manually (component by component). Import can be performed via menu **File** -> **Add new symbols from YAHOO! Finance – defined symbols** or **File** -> **Add new symbols from YAHOO! Finance – user's symbols**.
- **Updating** quotes data. Once data is added (imported) to CandleQuote you can update it with the latest quotes. Update can be performed via menu **File** -> **Update data**.
- **Exporting** quotes data. Although you can view the content of the downloaded data directly in CandleQuote, most probably you want to export it to some external files which then can be imported to your application like CandleScanner, MetaStock, WealthLab, AmiBroker or any other which supports ASCII files or MetaStock files.

On the Figure 6 you can see the main window of CandleQuote. As already stated the core functionality, i.e. data importing, exporting and updating is accessible from the **File** menu.



CandleQuote uses the notion of symbols **group** which is a logical place where you can store imported data in an ordered manner.

Group can be added either by right-clicking within **Symbols group** area or while running data import wizards.

You can think of CandleQuote group as of folders (directories) in your operating system where you store your files (called **symbols** in CandleQuote terminology). For example you can decide to create **NASDAQ** group where you import all the components (symbols) from this index. You can move symbols between groups similarly as you can move files between folders in your operating system. You also can remove (delete) symbol from the group. Groups can be also renamed.

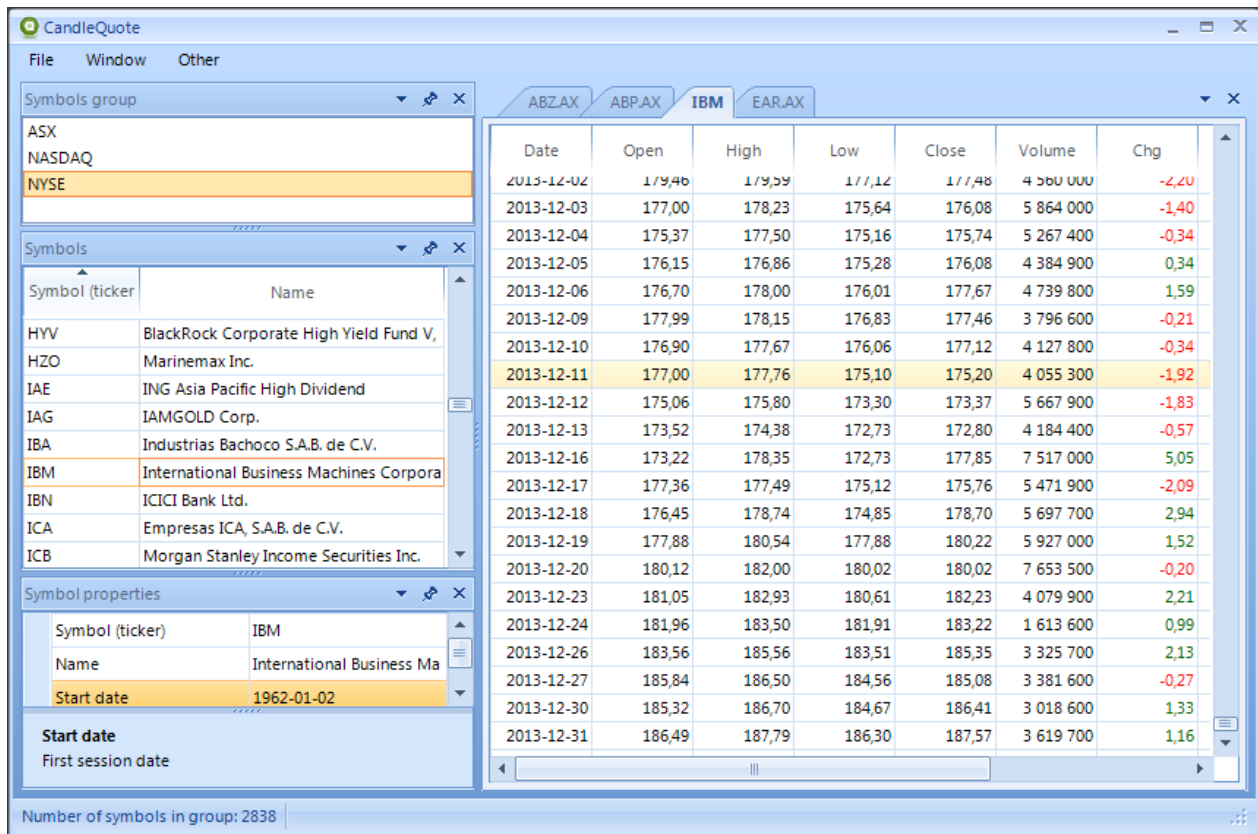


Figure 6. Main window of CandleQuote.

Please note that symbols have to be unique within groups. In the **Symbols** area on the main screen you see symbols from the selected group (e.g. NYSE on the Figure 6). Symbols have an additional property – **name**. This is a more descriptive than symbol (ticker) text string, which does not have to be unique within group (although it can be ambiguous and should be avoided if possible).

## WARNING!

All tabs and windows within CandleQuote can be dragged and dropped to either use it outside the main window or change the layout to meet your specific needs. You can always come back to original default layout settings via menu **Window -> Reset window layout**.

## Adding defined symbols

This method of adding (importing) data to CandleQuote is reachable from **File -> Add new symbols from YAHOO! Finance – defined symbols** (see Figure 7).

This method of importing data is the easiest and contains predefined (built-in) list of components grouped by markets. You simply can choose for example NASDAQ as a market and then select which companies you want to import to CandleQuote. You can also specify the date from which you want to import data. You need to also specify to which group you want to import data in CandleQuote. At the end of import process summary report is displayed to see if there were any problems with data download from YAHOO! Finance.

The drawback of this method may be however that the list can be outdated. Companies are constantly being added or removed from certain exchanges/markets. CandleQuote is released with the latest snapshot of the markets but after some time it can be obsolete. If you find this is the case then you can either to update CandleQuote to newer version (if available) or use the other method of import described in the next section **Adding symbols based on user's list**.

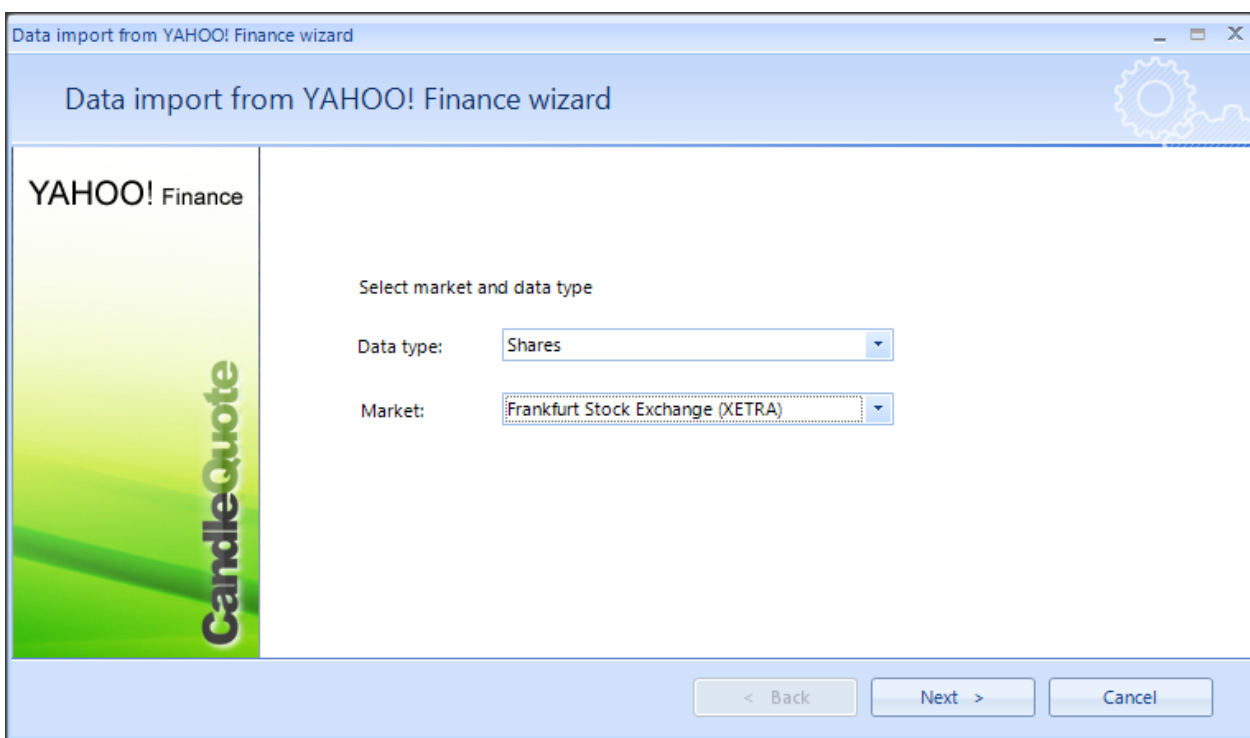


Figure 7. Wizard for importing quotes data based on the predefined (built-in) list.

### WARNING!

Importing huge volume of data can be very time-consuming (even hours). If you are sure that you do not need certain markets/components it is better to remove them from the import process. Also in the future when you want to update existing data in CandleQuote the process is faster if there are fewer components to be updated.

## Adding symbols based on user's list

This method of adding (importing) data to CandleQuote is reachable from **File -> Add new symbols from YAHOO! Finance – user's symbols** (see Figure 8).

Although this method of data import from YAHOO! Finance may seem a bit complex at first sight it is the most flexible and powerful method. As mentioned in the previous section, importing data based on predefined symbols can lead to not importing all data when the list is outdated. This can be avoided using our own external file with defined list of symbols we want to import to CandleQuote or entering this list manually directly in the CandleQuote wizard.

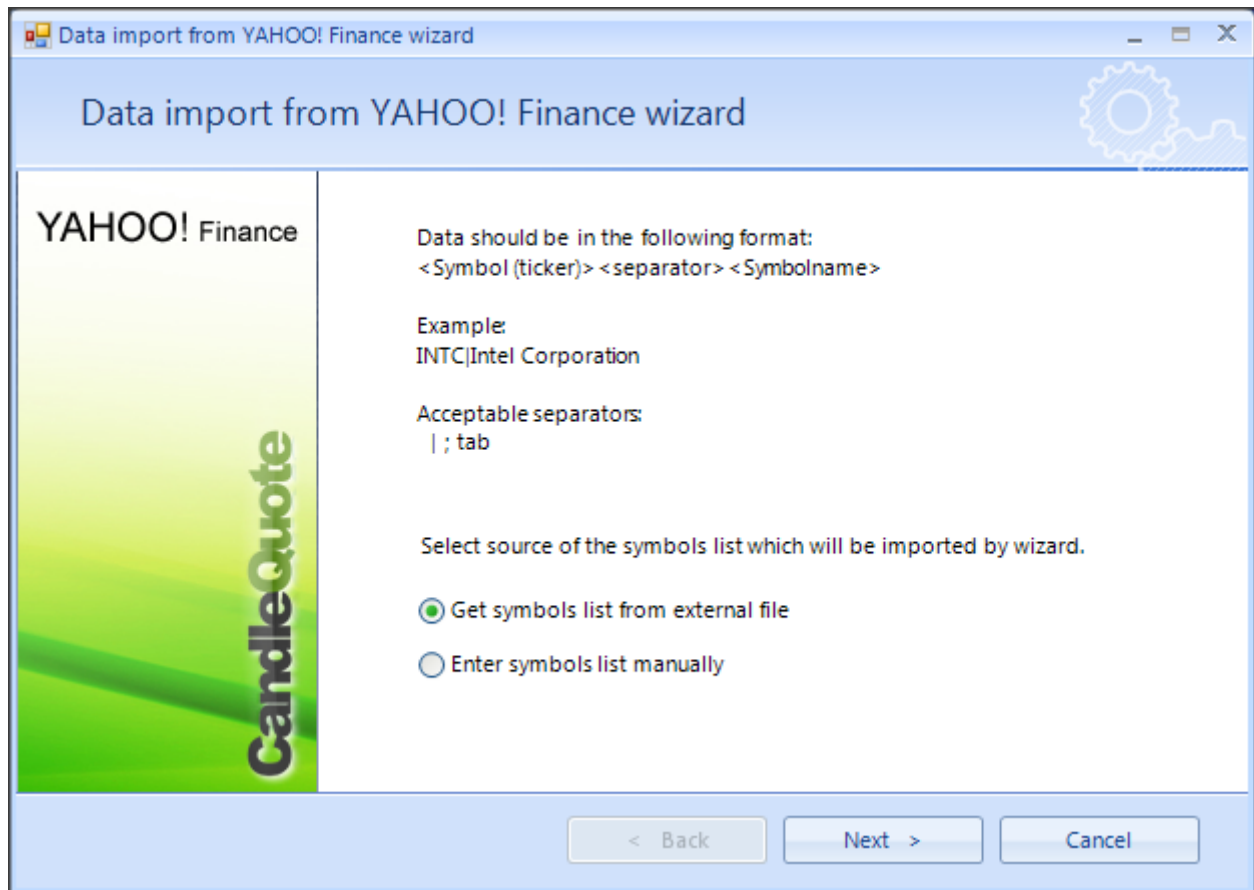


Figure 8. Wizard for importing quotes data based on the manually provided list (either from external file or entered manually).

When you run this wizard in the first step you need to decide whether you want to use external file all enter data manually. In both cases data you want to import need to be in the form of:

**<Symbol (ticker)> <separator> <Symbol name>**

As a separator you can use one of the following characters:

- | (pipe)
- ; (semicolon)
- tab (tabulator key)

For example you can create an ASCII text file (with any file extension as long as it is a plain text file) with the following content:

AA Alcoa Inc.  
AXP American Express Company  
BA The Boeing Company  
BAC Bank of America Corporation  
CAT Caterpillar Inc.  
CSCO Cisco Systems, Inc.  
CVX Chevron Corporation  
DD E. I. du Pont de Nemours and Company  
DIS The Walt Disney Company  
GE General Electric Company  
HD The Home Depot, Inc.

You can also enter this manually in the wizard if you selected this option at the beginning upon import.

Please note that in the example we used as a separator tab character. Although it may look like a number of spaces they are not created by pressing space button on the keyboard.

### WARNING!

While using as a separator tabulation character please pay attention that only **single tabulation** character can be used. The lines where more than one tabulation character is used will be skipped during import process. The same applies to lines where illegal character is used as a separator (e.g. white space character).

## Updating data

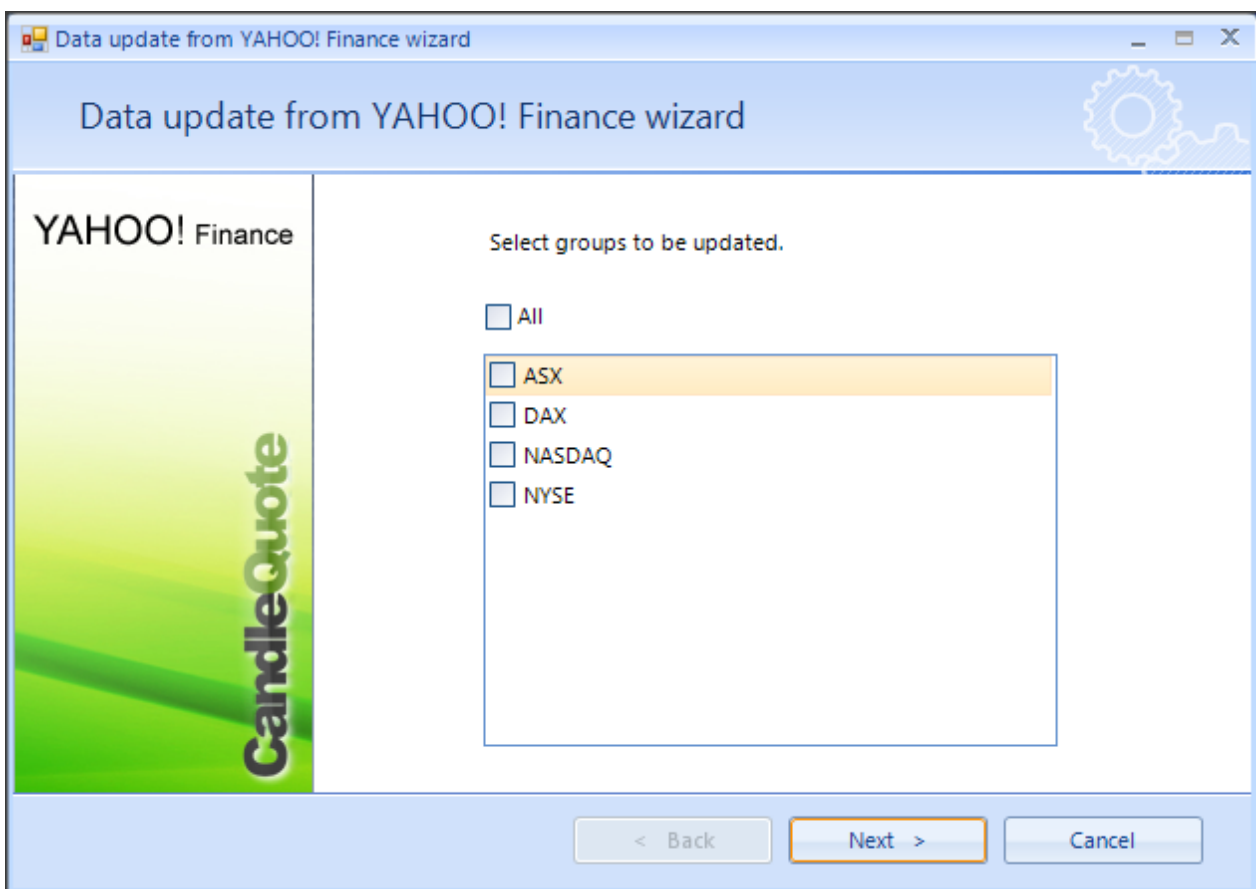


Figure 9. Wizard for updating imported data.

Once you have some data imported in CandleQuote you may want to update it. This operation is very straightforward and can be performed via **File -> Update data** (see Figure 9).

### WARNING!

Updating huge volume of data can be very time-consuming (even hours). If you are sure that you do not need certain markets/components it is better to remove them from group(s) what can accelerate updating process. Also please note that sometimes data on YAHOO! Finance side may be incorrect or not updated with the recent quotes.

## Exporting data to CandleScanner format

Imported data in CandleQuote can be exported to **CandleScanner** format. Technically the output format is saved as ASCII file, but in the way which enables in a very simple manner import it to CandleScanner application. If you are using CandleScanner you can export data using this method **File -> Export data to CandleScanner format**. Then in CandleScanner you select **Import data from CandleQuote** and specify the directory where your exported data is located. Although files being imported are in ASCII format you do not have to specify any further details in CandleScanner.

## Exporting data to MetaStock format

Imported data in CandleQuote can be exported to MetaStock® binary format which is used by many charting and technical analysis applications.

Exporting data to MetaStock format can be performed via **File -> Export data to MetaStock format** (see Figure 10).

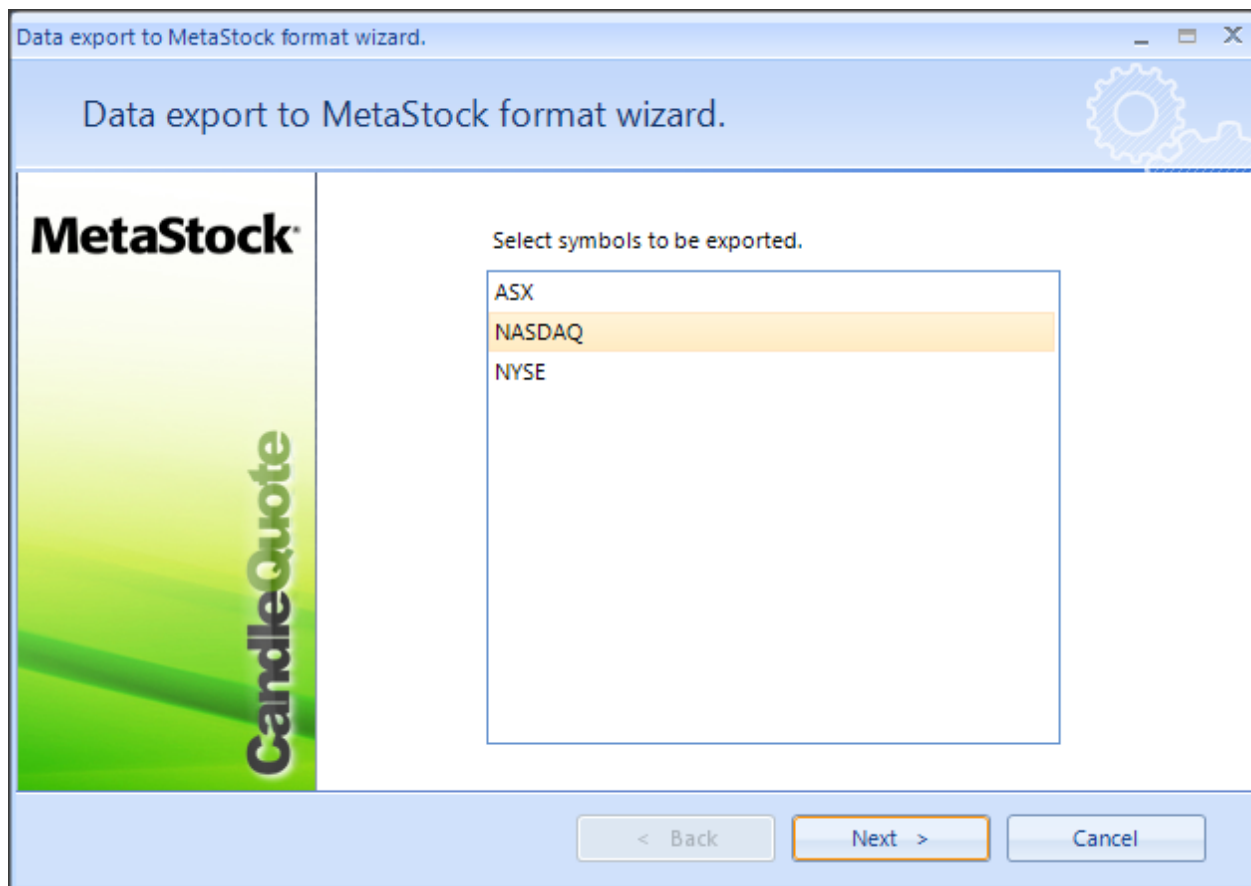


Figure 10. Wizard for exporting quotes data to MetaStock binary format.

All you need to do is to specify which group you want to save in MetaStock format and where to save it on your local hard drive.

At the end of export you can save the settings (output format, location and group) as an **export schema**. For more details please see **Automating exporting process using schemas** section.

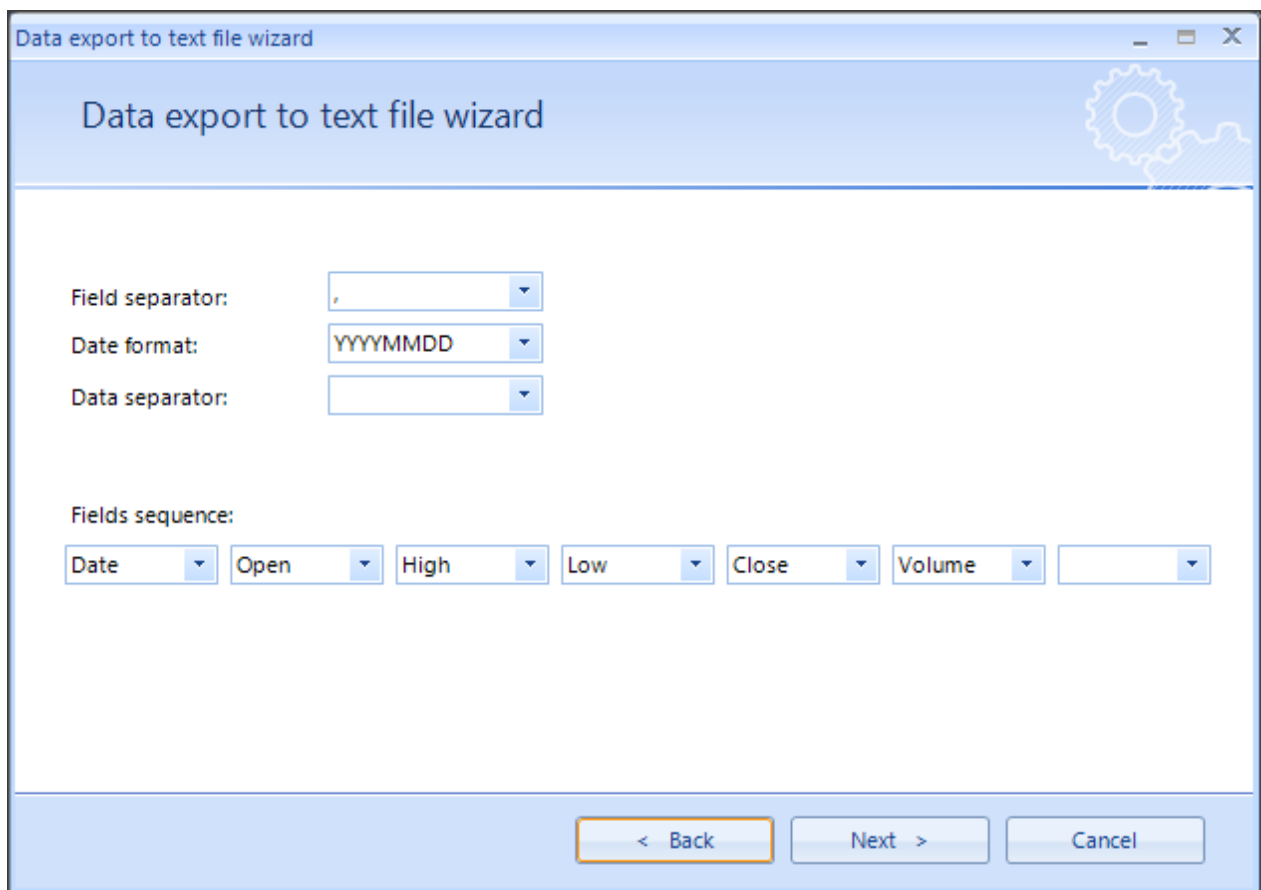
## Exporting data to text files (ASCII format)

Imported data in CandleQuote can be exported to ASCII format (plain text) which is used by many charting and technical analysis applications.

Exporting data to text format can be performed via **File -> Export data to text file** (see Figure 11).

You need to specify the format of output text file. It may depend on your specific needs or your software requirements.

At the end of export you can save the settings (output format, location and group) as an **export schema**. For more details please see **Automating exporting process using schemas** section.



The image shows a 'Data export to text file wizard' dialog box. It has a title bar with the text 'Data export to text file wizard' and standard window controls. The main area is titled 'Data export to text file wizard' and contains the following settings:

- Field separator:** A dropdown menu showing a comma (,).
- Date format:** A dropdown menu showing 'YYYYMMDD'.
- Data separator:** A dropdown menu.
- Fields sequence:** A row of dropdown menus containing 'Date', 'Open', 'High', 'Low', 'Close', 'Volume', and an empty dropdown.

At the bottom of the dialog are three buttons: '< Back', 'Next >', and 'Cancel'.

Figure 11. Wizard for exporting quotes data to ASCII files (plain text files).

## Automating exporting process using schemas

When you export to MetaStock, ASCII or CandleScanner format at the end of the process you can save used setting as an **export schema**. This may be very useful because next time when you want to export some data you do not have to specify again the same details and just use previously defined schema. Using schemas has also one additional benefit – you can specify that while exporting data you want to update them first. This way you can very quickly export latest data minimizing the required number of steps to be performed.

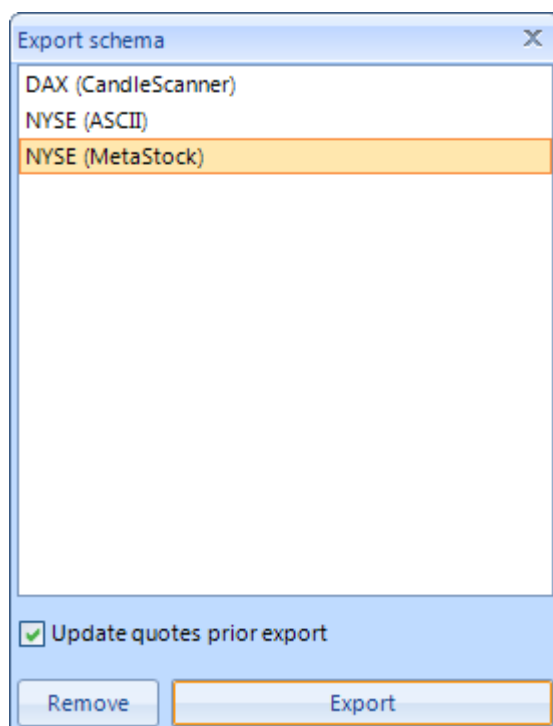


Figure 12. Exporting data using user's defined schemas.

To use user's defined schema for export use **File -> Export data using schema** (see Figure 12).

## 5. Troubleshooting

PROBLEM	SOLUTION
My symbol is not updated with the latest quotes.	From time to time there are some delays on the YAHOO! Finance side and the latest quotes are not available. Please try the update process at later time.
The symbol I am looking for cannot be found.	Unfortunately not always you can get everything at YAHOO! Finance. If this is the case you need to look for other sources because we do not have any influence on what YAHOO! is providing.
I cannot start the application after installation.	If you have not run the application automatically at the end of installation process then when you click on the CandleQuote icon you will not be able to run it at the first time. You need to right-click on the CandleQuote icon and select <b>Run as administrator</b> . This is required only for the first time when application asks you for registration data. Next time you can simply start the application without administrator privileges as any other application.

## 6. Frequently Asked Questions (FAQ)

### What is CandleQuote?

CandleQuote is a tool allowing you to download free end-of-day (EOD) data using YAHOO! Finance. Downloaded data is written in form of a text file (ASCII file). This data is compatible with any trading tool supporting EOD ASCII files

### Which data I can download using CandleQuote?

You can download actually any quotes which are provided by YAHOO! Finance. Currently it is around 60 stock exchanges worldwide.

### Will my application be able to read data downloaded by CandleQuote?

Any application which supports ASCII files is able to read data provided by CandleQuote. CandleQuote can generate text files in the way your application can accept.

### What type of markets does CandleQuote support?

Any market which is supported by YAHOO! Finance, e.g. stocks, mutual funds, bonds, indices etc.

### How much does it cost and how to buy it?

You pay for CandleQuote €39.95 (Euro). And this is one-time fee. So you have application for whole life. Also within first year you have free updates (if any are released). If you want to buy it, please create an account on the website and from the main page go to CandleQuote section where you can find **BUY** button. But before buying we encourage you to download trial version to see if it suit you. No refunds for bought applications are granted.

### Is there a trial version?

Yes, there is. Please navigate to main page at <http://candlescanner.com> and click **CandleQuote** section. There you can download trial version of CandleQuote.

### How long I can use trial version?

Trial version can be used for 7 days period. This is more than enough to see if it is suitable for you. During this period of time CandleQuote is fully operational without any limitations in comparison to full version.