

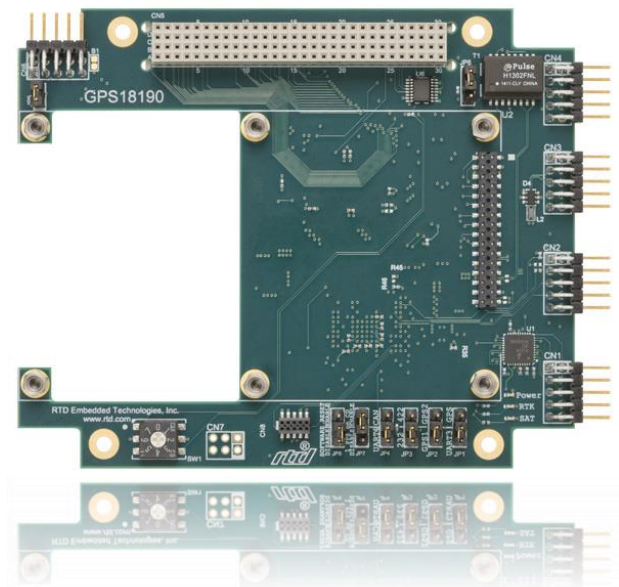


# GPS18190HR

*Trimble GPS Carrier module*

## User's Manual

BDM-610020090 Rev. D



**RTD Embedded Technologies, Inc.**

103 Innovation Boulevard  
State College, PA 16803 USA  
Telephone: 814-234-8087  
Fax: 814-234-5218

[www.rtd.com](http://www.rtd.com)

[sales@rtd.com](mailto:sales@rtd.com)  
[techsupport@rtd.com](mailto:techsupport@rtd.com)



# Revision History

---

Rev A	Initial Release
Rev B	Changed pin 4 of CN4 to RX-
Rev C	Added JP7, JP8, CN7 Added DTR Reset Information
Rev D	Added SW1 Information. Updated Board Picture

*Advanced Analog I/O, Advanced Digital I/O, aAIO, aDIO, a2DIO, Autonomous SmartCal, "Catch the Express", cpuModule, dspFramework, dspModule, expressMate, ExpressPlatform, HiDANplus, "ML Value for COTS prices", multiPort, PlatformBus, and PC/104EZ are trademarks, and "Accessing the Analog World", dataModule, iDAN, HiDAN, RTD, and the RTD logo are registered trademarks of RTD Embedded Technologies, Inc (formerly Real Time Devices, Inc.). PS/2 is a trademark of International Business Machines Inc. PCI, PCI Express, and PCIe are trademarks of PCI-SIG. PC/104, PC/104-Plus, PCI-104, PCIe/104, PCI/104-Express and 104 are trademarks of the PC/104 Embedded Consortium. All other trademarks appearing in this document are the property of their respective owners.*

*Failure to follow the instructions found in this manual may result in damage to the product described in this manual, or other components of the system. The procedure set forth in this manual shall only be performed by persons qualified to service electronic equipment. Contents and specifications within this manual are given without warranty, and are subject to change without notice. RTD Embedded Technologies, Inc. shall not be liable for errors or omissions in this manual, or for any loss, damage, or injury in connection with the use of this manual.*

*Copyright © 2015 by RTD Embedded Technologies, Inc. All rights reserved.*

# Table of Contents

---

<b>1</b>	<b>Introduction</b>	<b>7</b>
1.1	Product Overview.....	7
1.2	Board Features.....	7
1.3	Ordering Information.....	7
1.4	Contact Information.....	7
1.4.1	Sales Support	7
1.4.2	Technical Support	7
<b>2</b>	<b>Specifications</b>	<b>8</b>
2.1	Operating Conditions.....	8
2.2	Electrical Characteristics.....	8
<b>3</b>	<b>Board Connection</b>	<b>9</b>
3.1	Board Handling Precautions.....	9
3.2	Physical Characteristics.....	9
3.3	Connectors, Jumpers, and LEDs.....	10
3.3.1	Bus Connectors	10
	CN5: PCI Connector	10
3.3.2	External I/O Connectors	11
	CN1 Serial I/O Connector	11
	CN2 GPS Utility Connector	11
	CN3 GPS USB Connector	12
	CN4 GPS 10/100 Mbps Ethernet Connector	12
	CN6 GPS CAN Bus Connector	12
	CN7 External Power Connector	12
3.3.3	Jumpers	13
	JP1 and JP2: CN1 Serial Port Source	13
	JP3: CN1 Serial Port Mode	13
	JP4: GPS Serial Port 3 Connection	13
	JP5: CAN Bus Termination	13
	JP7: 1PPS on Carrier Detect	14
	JP8: GPS Software Reset	14
3.3.4	LEDs	14
	Power LED	14
	Real-Time Kenematic LED	14
	Satellite LED	14
3.4	Steps for Installing.....	15
<b>4</b>	<b>IDAN Connections</b>	<b>16</b>
4.1	Module Handling Precautions.....	16
4.2	Physical Characteristics.....	16
4.3	Connectors.....	16
4.3.1	External I/O Connectors	16
4.3.2	Bus Connectors	16
	CN5: PCI Connector	16
4.4	Steps for Installing.....	17
<b>5</b>	<b>Functional Description</b>	<b>18</b>
5.1	Block Diagram.....	18
5.2	GPS Interface.....	18
5.2.1	GPS Antenna	18
5.2.2	PCI Bus UARTS	18
5.2.3	DTR GPS Reset	20

<b>6</b>	<b>Software</b>	<b>21</b>
6.1	Installing the Software .....	21
6.2	Serial Port Configuration.....	21
6.3	Software Programming .....	21
	6.3.1 API Interface	21
	6.3.2 COM Port Numbering	21
	6.3.3 Base Address and Register Mapping	21
<b>7</b>	<b>Troubleshooting</b>	<b>22</b>
<b>8</b>	<b>Additional Information</b>	<b>23</b>
8.1	PC/104 Specifications.....	23
8.2	PCI and PCI Express Specification .....	23
<b>9</b>	<b>Limited Warranty</b>	<b>24</b>

## Table of Figures

---

Figure 1: Board Dimensions .....	9
Figure 2: Board Connections, Jumpers, and LEDs .....	10
Figure 3: Example 104™ Stack .....	15
Figure 4: IDAN Dimensions .....	16
Figure 5: Example IDAN System .....	17
Figure 6: GPS18190 Block Diagram.....	18

## Table of Tables

---

Table 1: Ordering Options .....	7
Table 2: Operating Conditions .....	8
Table 3: Electrical Characteristics .....	8
Table 4: CN1 in UART RS-232 Mode.....	11
Table 5: CN1 in GPS RS-232 Mode.....	11
Table 6: CN1 in UART RS-422/485 Mode.....	11
Table 7: CN1 in GPS RS-422/485 Mode.....	11
Table 8: CN2 GPS Utility .....	11
Table 9: CN3 GPS USB.....	12
Table 10: CN4 GPS Ethernet .....	12
Table 11: CN5 GPS CAN .....	12
Table 12: CN7 External Power .....	12
Table 13: JP1 and JP2 Settings .....	13
Table 14: JP3 Settings.....	13
Table 15: JP4 Settings.....	13
Table 16: JP5 Settings.....	13
Table 17: JP7 Settings.....	14
Table 18: JP7 Settings.....	14

# 1 Introduction

---

## 1.1 Product Overview

The GPS18190 is designed to provide a PCI UART interface to a Trimble GPS. It uses a PCI/104 interface to the CPU module, and provides the ability to communicate with all three GPS serial interfaces. Additionally, the module provides connectors for Ethernet, CAN, and USB to the module. It is compatible with all PCI/104 modules.

## 1.2 Board Features

- PCI Interface to CPU
- Quad UART interface to Trimble GPS modules
- Ethernet connector to GPS module
- USB connector to GPS module
- CAN connector to GPS module
- External serial interface to GPS module, optionally a RS-232/422 serial port
- PCI Bus:
  - 32-bit, 33 MHz PCI Bus
  - PCI Target Controller allows PCI access to quad UART

## 1.3 Ordering Information

The GPS18190 is available with the following options:

**Table 1: Ordering Options**

Part Number	Description
GPS18190HR	Trimble GPS Carrier Module
GPS18190HR-xxx	GPS18190HR with Trimble BD970-xxx GPS
IDAN-GPS18190HRS	Trimble GPS Carrier Module in IDAN enclosure
IDAN-GPS18190HRS-xxx	GPS18190HR with Trimble BD970-xxx GPS in IDAN enclosure

The Intelligent Data Acquisition Node (IDAN™) building block can be used in just about any combination with other IDAN building blocks to create a simple but rugged 104™ stack. This module can also be incorporated in a custom-built RTD HiDAN™ or HiDANplus High Reliability Intelligent Data Acquisition Node. Contact RTD sales for more information on our high reliability systems.

## 1.4 Contact Information

### 1.4.1 SALES SUPPORT

For sales inquiries, you can contact RTD Embedded Technologies sales via the following methods:

Phone: 1-814-234-8087 Monday through Friday, 8:00am to 5:00pm (EST).  
 E-Mail: sales@rtd.com

### 1.4.2 TECHNICAL SUPPORT

If you are having problems with you system, please try the steps in the [Troubleshooting](#) section of this manual.

For help with this product, or any other product made by RTD, you can contact RTD Embedded Technologies technical support via the following methods:

Phone: 1-814-234-8087 Monday through Friday, 8:00am to 5:00pm (EST).  
 E-Mail: techsupport@rtd.com

## 2 Specifications

### 2.1 Operating Conditions

Table 2: Operating Conditions

Symbol	Parameter	Test Condition	Min	Max	Unit
V <sub>cc5</sub>	5V Supply Voltage		4.75	5.25	V
T <sub>a</sub>	Operating Temperature		-40	+85	C
T <sub>s</sub>	Storage Temperature		-55	+125	C
RH	Relative Humidity	Non-Condensing	0	90%	%
MTBF	Mean Time Before Failure	Telcordia Issue 2 30°C, Ground benign, controlled		TBD	Hours

### 2.2 Electrical Characteristics

Table 3: Electrical Characteristics

Symbol	Parameter	Test Condition	Min	Typical	Max	Unit
P	Power Consumption	V <sub>cc5</sub> = 5.0V No Module Installed		0.9		W
I <sub>cc5</sub>	5V Input Supply Current	Active No Module Installed		180		mA
PCI Bus						
V <sub>IH3.3</sub>	PCI 3.3V Input High Voltage	JP300 = 1-2 (3.3V)	1.65		3.3	V
V <sub>IL3.3</sub>	PCI 3.3V Input Low Voltage	JP300 = 1-2 (3.3V)	0		0.7	V
V <sub>IH5</sub>	PCI 5V Input High Voltage	JP300 = 2-3 (5V)	2.0		5.5	V
V <sub>IL5</sub>	PCI 5V Input Low Voltage	JP300 = 2-3 (5V)	0		0.8	V
I <sub>IL</sub>	PCI Input Leakage	0 < V <sub>I</sub> < V <sub>IO</sub>	-10		10	μA
I <sub>OZ</sub>	PCI Hi-Z Leakage	0 < V <sub>I</sub> < V <sub>IO</sub>			10	μA
V <sub>OH3.3</sub>	PCI 3.3V Output High Voltage	JP300 = 1-2 (3.3V), I <sub>OUT</sub> = -0.5mA	2.97			V
V <sub>OL3.3</sub>	PCI 3.3V Output Low Voltage	JP300 = 1-2 (3.3V), I <sub>OUT</sub> = 1.5mA			0.33	V
V <sub>OH5</sub>	PCI 5V Output High Voltage	JP300 = 2-3 (5V), I <sub>OUT</sub> = -12mA	2.4			V
V <sub>OL5</sub>	PCI 5V Output Low Voltage	JP300 = 2-3 (5V), I <sub>OUT</sub> = 12mA			0.4	V
CAN Port						
	Positive-going Input Threshold			750	900	mV
	Negative-going Input Threshold		500	650		mV
	Hysteresis Voltage			100		mV
	Input Resistance		20		50	KΩ
	Output Voltage (Dominant)	CAN-H	2.75	3.5	4.5	V
		CAN-L	0.5		2	
	Output Voltage (Recessive)	CAN-H	2	2.5	3	V
		CAN-L	2	2.5	3	
	Differential Output (Dominant)		1.2	2	3	V
	Differential Output (Recessive)		-120		12	mV
	Termination Resistor			121		Ω



# 3 Board Connection

## 3.1 Board Handling Precautions

To prevent damage due to Electrostatic Discharge (ESD), keep your board in its antistatic bag until you are ready to install it into your system. When removing it from the bag, hold the board at the edges, and do not touch the components or connectors. Handle the board in an antistatic environment, and use a grounded workbench for testing and handling of your hardware.

## 3.2 Physical Characteristics

- Weight: Approximately 55 g (0.12 lbs.)
- Dimensions: 90.17 mm L x 95.89 mm W (3.550 in L x 3.775 in W)

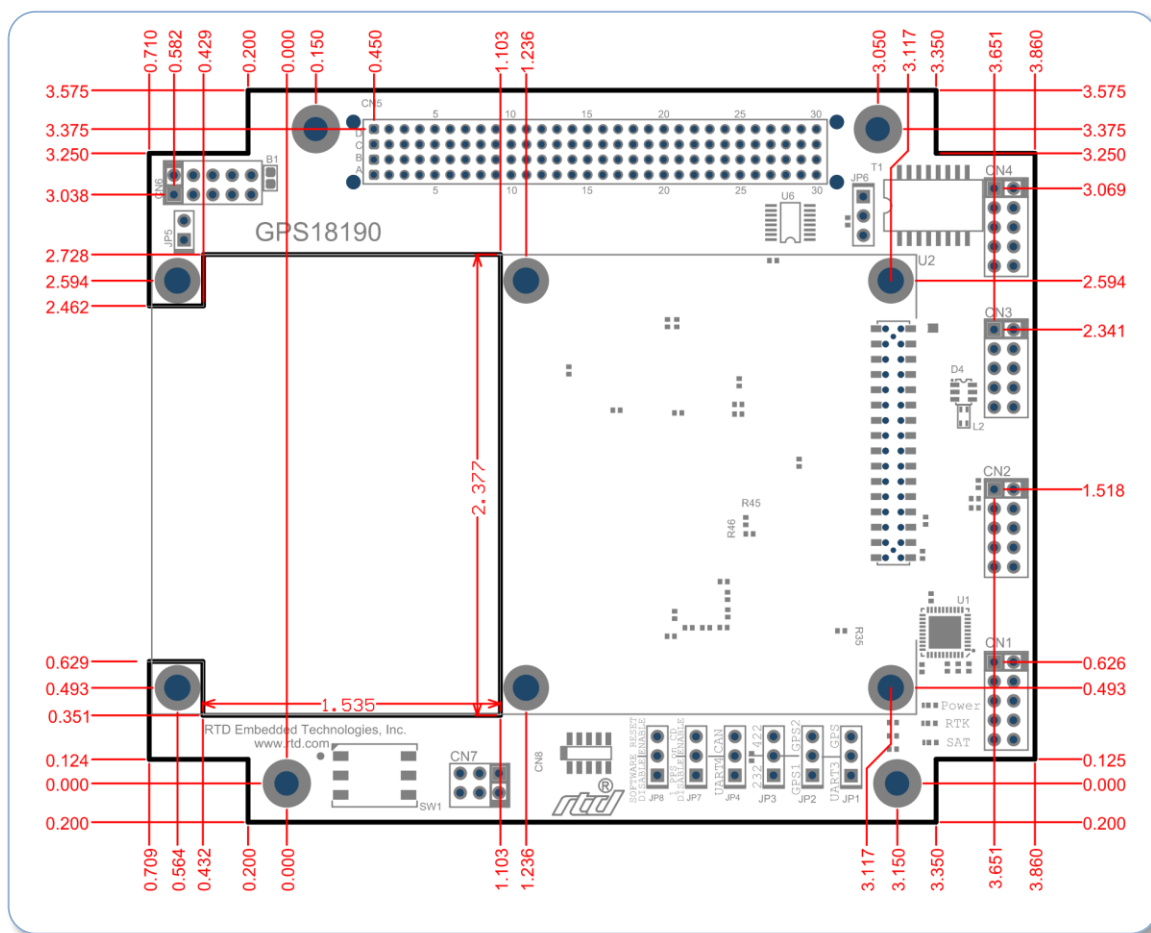
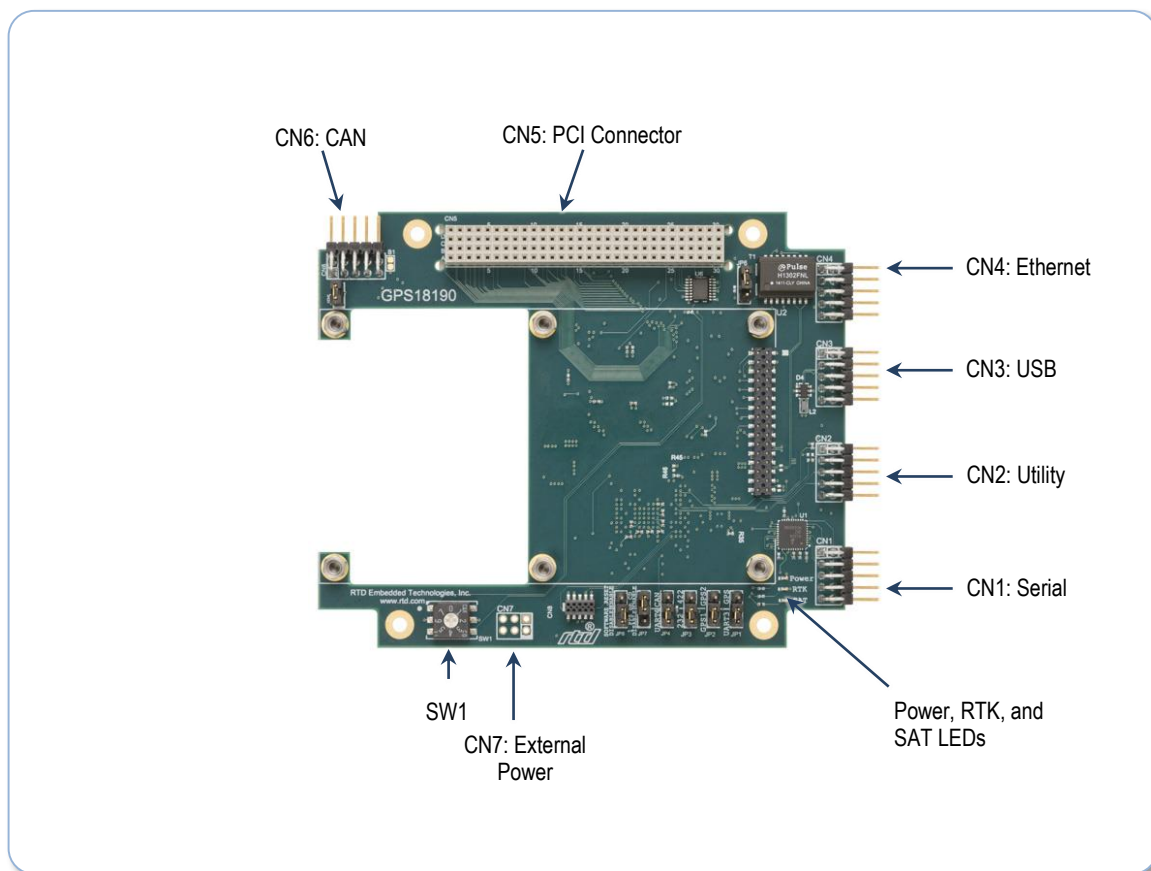


Figure 1: Board Dimensions

### 3.3 Connectors, Jumpers, and LEDs



### 3.4

**Figure 2: Board Connections, Jumpers, and LEDs**

#### 3.4.1 BUS CONNECTORS

##### CN5: PCI Connector

The PCI connector is the connection to PCI peripheral modules. The position and pin assignments are compliant with the *PCI/104 Specification*. (See [PC/104 Specifications](#) on page 23)

##### PCI Configuration Options

To install the GPS18190 into the stack, the PCI Slot Number must be configured correctly. This is done by the PCI Slot Selector located at SW1.

There are four possible PCI Slot Numbers (0 – 3). Each PCI device (*PC/104-Plus* or *PCI-104*) must use a different slot number. The slot number is related to the position of the board in the stack. Slot 0 represents the PCI device closest to the CPU. Slot 3 represents the PCI devices farthest away from the CPU.



**NOTE: In a *PC/104-Plus* or *PCI-104* system, all PCI devices should be located on one side of the CPU board (above or below the add-on cards). The CPU should not be located between two PCI devices.**

##### Switch SW1 – PCI Slot Selector

When the *PC/104-Plus* Specification was first introduced, it only allowed for three PCI add-on cards to be bus masters. Version 2.0 of the *PC/104-Plus* specification was released in November 2003. This version of the specification adds support for all 4 PCI slots to be bus masters.

The PCI Slot Number can be configured as follows:

Switch Position	PCI Slot Number	Compatibility	Master
0	Slot 0 (closest to CPU)	4	yes
1	Slot 1	4	yes
2	Slot 2	4	yes
3	Slot 3	4	yes

### 3.4.2 EXTERNAL I/O CONNECTORS

#### CN1 Serial I/O Connector

CN1 is an RS-232/RS-422/RS-485 interface that can be configured to be a serial port off the CPU or one of the first two serial ports from the GPS. Table 4 and Table 5 is the pin out in RS-232 mode, if JP3 has pins 1 – 2 shorted.

**Table 4: CN1 in UART RS-232 Mode**

Pin Name	Pin #	Pin #	Pin Name
DSR	2	1	DCD
RTS	4	3	RxD
CTS	6	5	TxD
RI	8	7	DTR
GND	10	9	GND

**Table 5: CN1 in GPS RS-232 Mode**

Pin Name	Pin #	Pin #	Pin Name
-	2	1	-
RTS	4	3	RxD
CTS	6	5	TxD
-	8	7	-
GND	10	9	GND

Table 6 and Table 7 is the pin out of CN1 in RS422/485 mode, if JP3 has pins 2 – 3 shorted. Note that when connected to the UART, RTS is used to enable the driver. When connected to the GPS the driver is always enabled.

**Table 6: CN1 in UART RS-422/485 Mode**

Pin Name	Pin #	Pin #	Pin Name
-	2	1	-
TxD+	4	3	RxD-
RxD+	6	5	TxD-
-	8	7	-
GND	10	9	GND

**Table 7: CN1 in GPS RS-422/485 Mode**

Pin Name	Pin #	Pin #	Pin Name
-	2	1	-
TxD+	4	3	RxD-
RxD+	6	5	TxD-
-	8	7	-
GND	10	9	GND

#### CN2 GPS Utility Connector

CN2 is the GPS Utility connector. It contains the GPS external reset, a buffered 1 pulse-per-second with a 7 ns maximum delay, the GPS Event 1 input, and three GPS LED signals. All signals go through the EPLD so they are 5 volt tolerant and the LED signals are capable of +8/-4 mA.. Table 8 is the pin out of the Utility connector.

**Table 8: CN2 GPS Utility**

Pin Name	Pin #	Pin #	Pin Name
1PPS	2	1	Reset
Event1	4	3	GND
3.3V	6	5	RTK LED
3.3V	8	7	PWR LED
3.3V	10	9	SAT LED

### CN3 GPS USB Connector

CN3 is the GPS USB port. It connects directly to the GPS USB port. Table 9 is the pin out of the USB connector.

**Table 9: CN3 GPS USB**

Pin Name	Pin #	Pin #	Pin Name
Rsvd	2	1	Rsvd
Rsvd	4	3	USB+
Rsvd	6	5	USB-
GND	8	7	GND
GND	10	9	GND

### CN4 GPS 10/100 Mbps Ethernet Connector

CN4 is the GPS 10/100 Mbps Ethernet port. The GPS18190 provides the magnetics required to connect the GPS directly to 10/100 Mbps network. It is full duplex with auto-negotiation enabled. Table 10 is the pin out of the Ethernet connector.

**Table 10: CN4 GPS Ethernet**

Pin Name	Pin #	Pin #	Pin Name
RX-	2	1	RX+
Term	4	3	Term
TX-	6	5	TX+
Term	8	7	Term
GND	10	9	GND

### CN6 GPS CAN Bus Connector

CN6 is the GPS CAN Bus port. The GPS18190 provides the CAN transceiver required to connect the GPS directly to CAN network. This requires the GPS module to configure COM3 as CAN. Jumper JP4 controls the GPS to CAN transceiver connection. If JP4 has pins 1 – 2 shorted GPS COM3 is connected to the UART channel 3. If JP4 has pins 2 – 3 shorted GPS COM3 is connected to the CAN transceiver. Table 11 is the pin out of the Ethernet connector.

**Table 11: CN5 GPS CAN**

Pin Name	Pin #	Pin #	Pin Name
GND	2	1	Rsvd
CAN-H	4	3	CAN-L
Rsvd	6	5	GND
+5V <sup>1</sup>	8	7	Rsvd
Rsvd	10	9	GND

---

<sup>1</sup> Only Available when B1 is shorted

### CN7 External Power Connector

The GPS18190 provides an external power connector to allow the module to be used as a stand-alone.

**Table 12: CN7 External Power**

Pin Name	Pin #	Pin #	Pin Name
GND	2	1	+5V
N/C	4	3	N/C
+5V	6	5	GND

---

**Note:** CN8 is for Factory Use only

---

### 3.4.3 JUMPERS

#### JP1 and JP2: CN1 Serial Port Source

JP1 and JP2 are 3-pin two position jumpers that are used to select if the UART or a GPS serial port is connected to CN1. These jumpers affect UART serial ports 1, 2, and 4 as well as GPS serial ports 1 and 2. Table 13 has JP1 and JP2 setting information.

**Table 13: JP1 and JP2 Settings**

JP1 Setting	JP2 Setting	Description	Notes
1 – 2	Any Position	GPS serial port 1 connected to UART serial port 1 GPS serial port 2 connected to UART serial port 2 UART serial port 4 is connected to CN1	Factory default is 1 – 2 for both JP1 and JP2
2 – 3	1 – 2	GPS serial port 1 connected to CN1 GPS serial port 2 connected to UART serial port 2 UART serial port 1 monitors GPS serial port 1 UART serial port 4 is unused	
	2 – 3	GPS serial port 1 connected to UART serial port 1 GPS serial port 2 connected to CN1 UART serial port 2 monitors GPS serial port 2 UART serial port 4 is unused	

#### JP3: CN1 Serial Port Mode

JP3 is used to select the mode of serial port CN1. The options are shown in Table 14.

**Table 14: JP3 Settings**

Setting	Description	Notes
1 – 2	RS-232	Factory default
2 – 3	RS-422/485	

Note that in RS-422 mode when connected to the UART (JP1 is 1 – 2) RTS is used to enable the driver. When connected to the GPS (JP1 is 2 – 3) the driver is always enabled.

#### JP4: GPS Serial Port 3 Connection

JP4 is used to select the connection of GPS serial port 3. The options are shown in Table 15.

**Table 15: JP4 Settings**

Setting	Description	Notes
1 – 2	GPS serial port 3 connected to UART serial port 3	Factory default
2 – 3	GPS serial port 3 connected to CAN transceiver CN6 UART serial port 3 monitors GPS serial port 1	

#### JP5: CAN Bus Termination

JP5 is used terminate the CAN bus. If this device is not at the end of the CAN bus, remove this jumper. The options are shown in Table 16: JP5 Settings.

**Table 16: JP5 Settings**

Setting	Description	Notes
1 – 2 Short	CAN Bus Terminated	Factory default
1 – 2 Open	CAN Bus Not Terminated	

### JP7: 1PPS on Carrier Detect

The GPS18190 provides the 1 PPS signal to Carrier Detect when the GPS serial port is connected to a UART port. JP7 is used enable/disable the GPS sending the 1PPS signal to the serial carrier detect. The options are shown in Table 17.

**Table 17: JP7 Settings**

Setting	Description	Notes
1 – 2	1PPS is disconnected to Carrier Detect	
2 – 3	1PPS is connected from Carrier Detect	Factory default

### JP8: GPS Software Reset

JP8 is used enable/disable the DTR GPS reset. The options are shown in Table 18.

**Table 18: JP8 Settings**

Setting	Description	Notes
1 – 2	DTR GPS Reset is Disabled	Factory default
2 – 3	DTR GPS Reset is Enabled	

---

**Note:** JP6 is for Factory Use only

---

## 3.4.4 LEDs

### Power LED

The Power LED is connected to the POWER LED signal of the GPS. It is on when power is applied to the GPS module.

### Real-Time Kinematic LED

The RTK LED is connected to the RTK LED signal of the GPS. It flashes slowly when an RTK correction is present.

### Satellite LED

The Satellite (SAT) LED is connected to the SAT LED signal of the GPS. It flashes rapidly to indicate less than 5 satellites and slowly flashes to indicate more than 5 satellites.

## 3.5 Steps for Installing

1. Always work at an ESD protected workstation, and wear a grounded wrist-strap.
2. Turn off power to the PC/104 system or stack.
3. Select and install stand-offs to properly position the module on the stack.
4. Remove the module from its anti-static bag.
5. Check that pins of the bus connector are properly positioned.
6. Check the stacking order; make sure all of the busses used by the peripheral cards are connected to the cpuModule.
7. Hold the module by its edges and orient it so the bus connector pins line up with the matching connector on the stack.
8. Gently and evenly press the module onto the PC/104 stack.
9. If any boards are to be stacked above this module, install them.
10. Attach any necessary cables to the PC/104 stack.
11. Re-connect the power cord and apply power to the stack.
12. Boot the system and verify that all of the hardware is working properly.



**NOTE:** *When using under Windows, the GPS may be incorrectly detected as a Serial Mouse, causing erratic mouse cursor behavior. This issue has been documented by Microsoft. For more information, refer to Microsoft Knowledge Base Article 283063.*

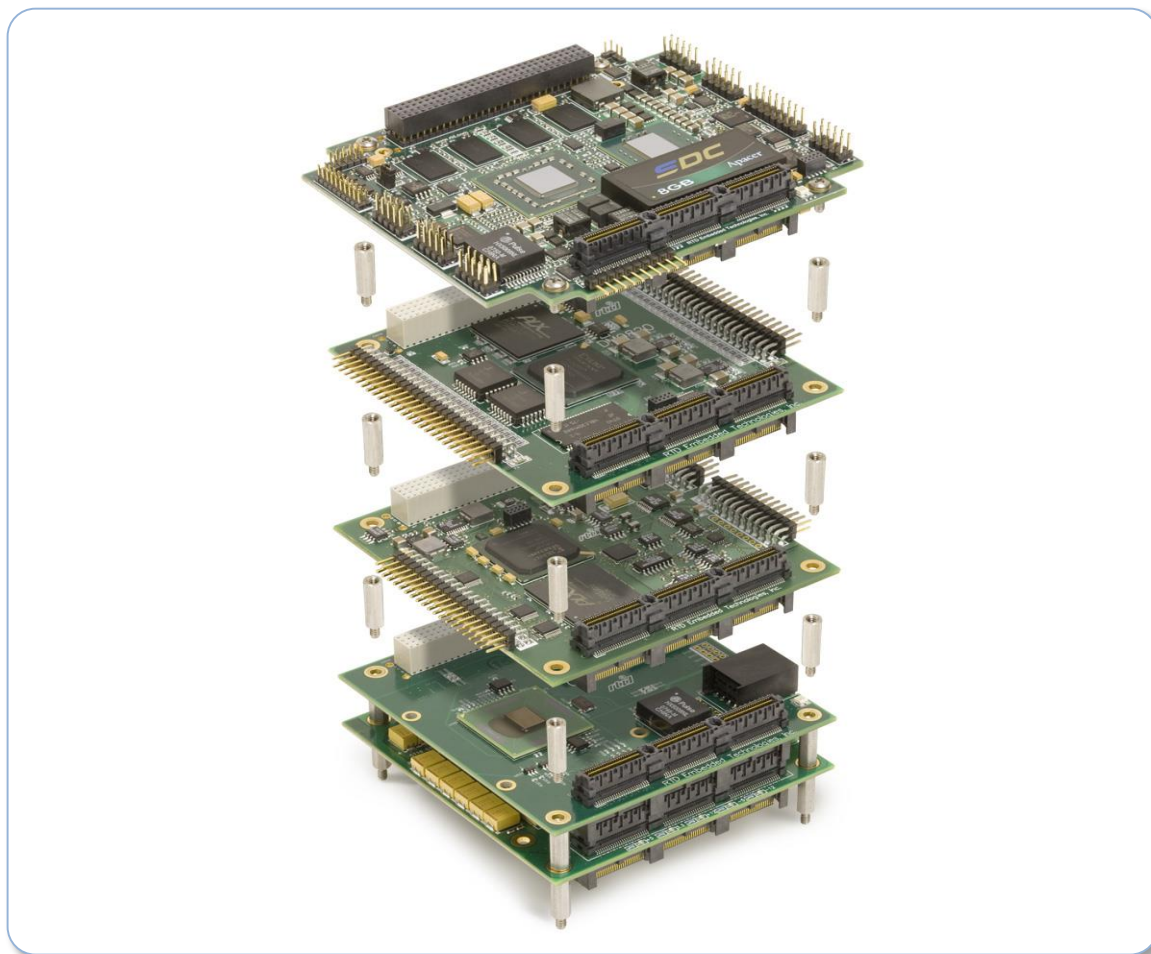


Figure 3: Example 104™ Stack

## 4 IDAN Connections

### 4.1 Module Handling Precautions

To prevent damage due to Electrostatic Discharge (ESD), keep your module in its antistatic bag until you are ready to install it into your system. When removing it from the bag, hold the module by the aluminum enclosure, and do not touch the components or connectors. Handle the module in an antistatic environment, and use a grounded workbench for testing and handling of your hardware.

### 4.2 Physical Characteristics

- Weight: Approximately 0.21 Kg (0.46 lbs.)
- Dimensions: 151.972 mm L x 129.978 mm W x 16.993 mm H (5.983 in L x 5.117 in W x 0.669 in H)

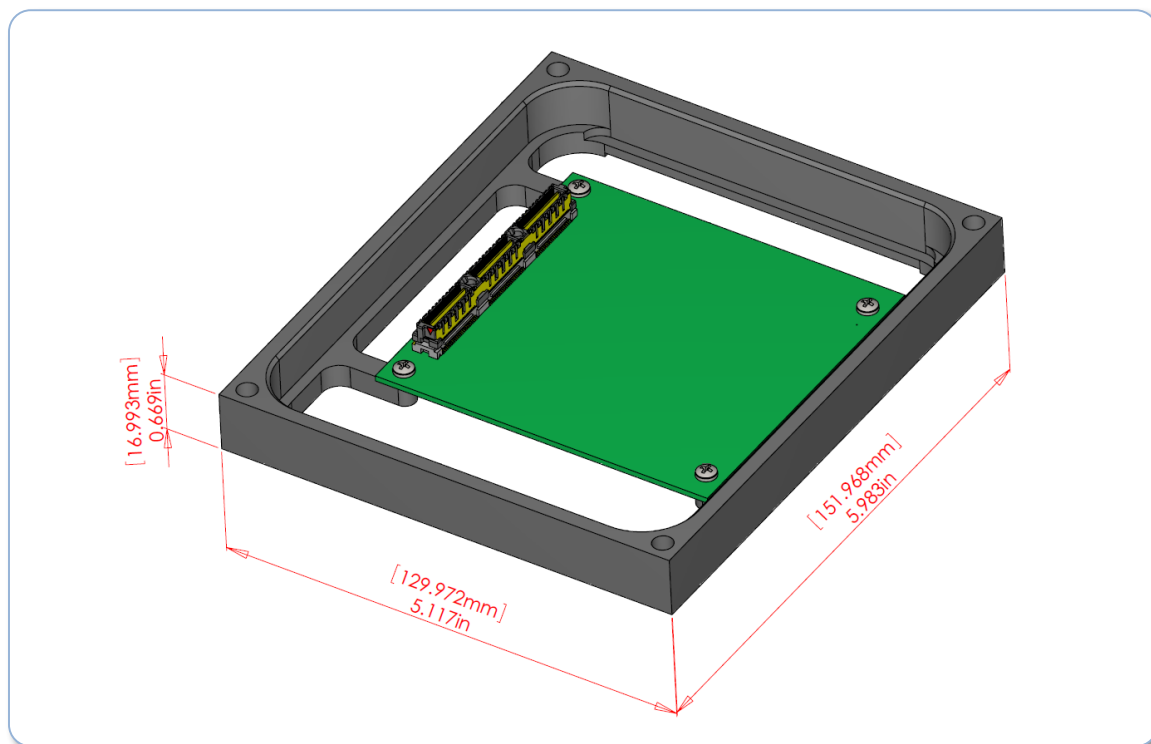


Figure 4: IDAN Dimensions

### 4.3 Connectors

#### 4.3.1 EXTERNAL I/O CONNECTORS

There are no external I/O connectors on the GPS18190

#### 4.3.2 BUS CONNECTORS

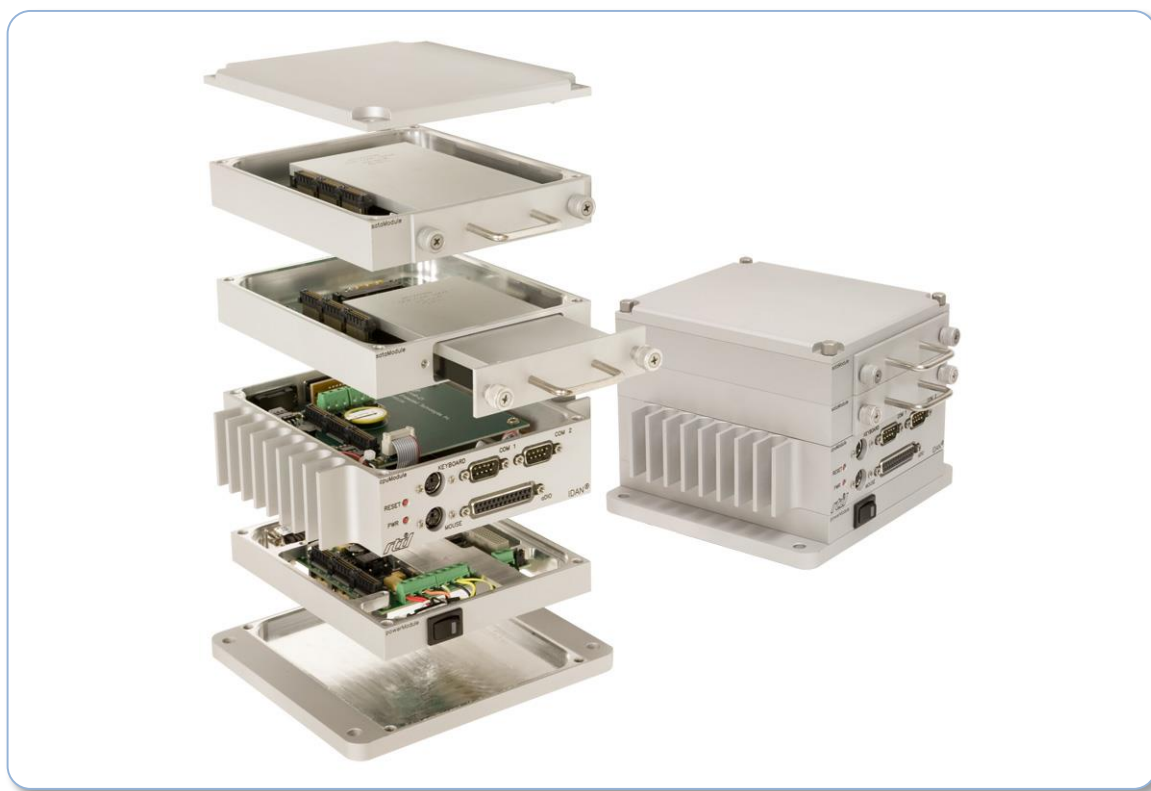
##### CN5: PCI Connector

The PCI connector is the connection to PCI peripheral modules. The position and pin assignments are compliant with the *PCI/104 Specification*. (See [PC/104 Specifications](#) on page 23)



## 4.4 Steps for Installing

1. Always work at an ESD protected workstation, and wear a grounded wrist-strap.
2. Turn off power to the IDAN system.
3. Remove the module from its anti-static bag.
4. Check that pins of the bus connector are properly positioned.
5. Check the stacking order; make sure all of the busses used by the peripheral cards are connected to the cpuModule.
6. Hold the module by its edges and orient it so the bus connector pins line up with the matching connector on the stack.
7. Gently and evenly press the module onto the IDAN system.
8. If any boards are to be stacked above this module, install them.
9. Finish assembling the IDAN stack by installing screws of an appropriate length.
10. Attach any necessary cables to the IDAN system.
11. Re-connect the power cord and apply power to the stack.
12. Boot the system and verify that all of the hardware is working properly.

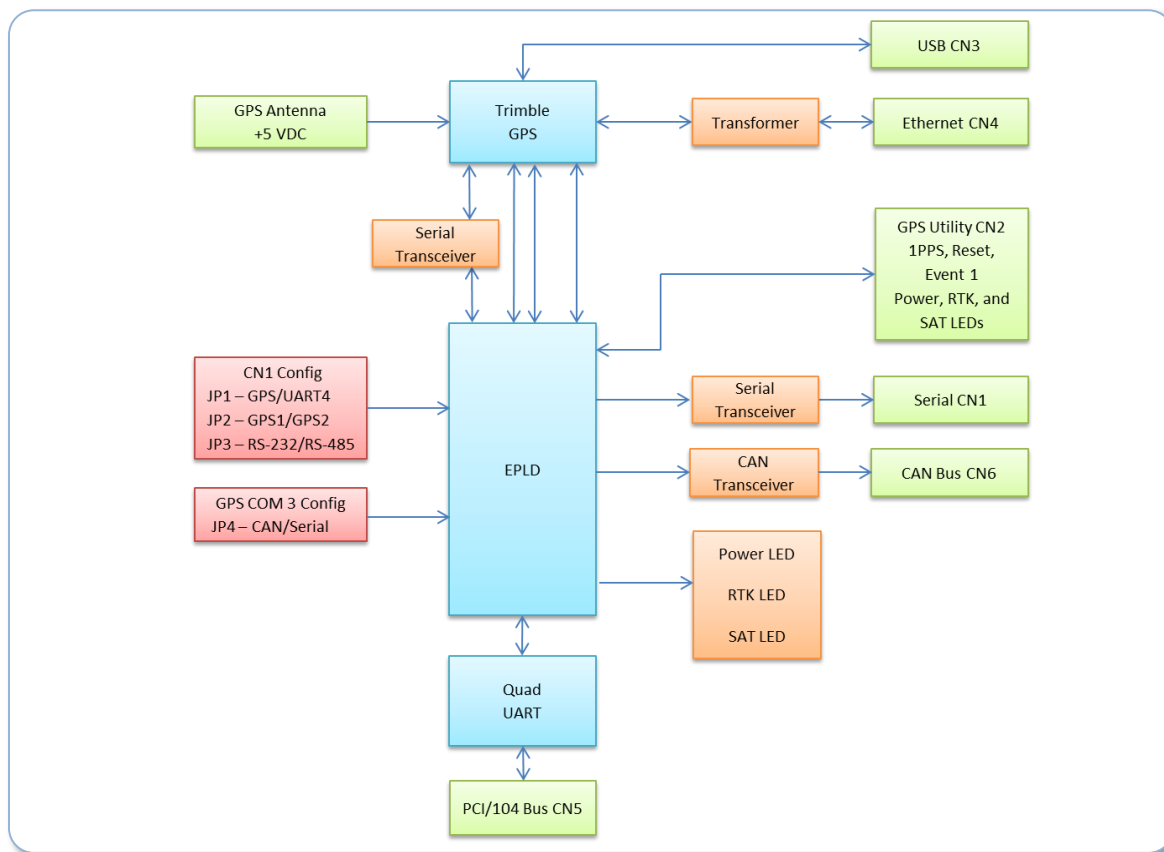


*Figure 5: Example IDAN System*

# 5 Functional Description

## 5.1 Block Diagram

The Figure below shows the functional block diagram of the GPS18190. The various parts of the block diagram are discussed in the following sections.



**Figure 6: GPS18190 Block Diagram**

## 5.2 GPS Interface

The GPS18190 is a carrier board for a Trimble GPS receiver. It provides a quad UART interface to the PCI bus that can be connected to all three serial ports of the GPS and serial connector CN1. Optionally, one of the GPS serial ports can be connected to CN1. If the GPS module has CAN bus capability on the third serial port, it can be connected to an onboard CAN transceiver. The GPS antenna connects directly to the GPS module.

### 5.2.1 GPS ANTENNA

The GPS antenna connects directly to the GPS module.

### 5.2.2 PCI Bus UARTS

The GPS18190 has four PCI bus UARTS. By default they are connected as follows:

- UART 1 to GPS COM1
- UART 2 to GPS COM2
- UART 3 to GPS COM3
- UART 4 to serial port connector CN1

Jumper JP1 and JP2 selection may disable some of these ports to allow the GPS COM ports to connect to serial connector CN1 or CAN connector CN6.  
Refer to

[Jumpers](#) on page 13.

### 5.2.3 DTR GPS RESET

The DTR signal of the first UART is used to generate a GPS reset signal. A reset pulse will be generated when the DTR signal transition from asserted to de-asserted (MCR bit 0 transitions from 1 to 0). JP8 needs set to 2-3 to enable this function.

## 6 Software

---

### 6.1 Installing the Software

The GPS18190 use a PCI UART which will require software and drivers for proper operation. Drivers are provided for Windows XP/7, DOS, and Linux Kernel 2.6.37 and newer.

The drivers are provided on the companion CD and are also available on the RTD web site (<http://www.rtd.com>) for download.

### 6.2 Serial Port Configuration

A software utility is required to configure serial port mode and termination setting. This utility along with source code for the utility is provided on the companion CD and is also available on the RTD web site (<http://www.rtd.com>) for download.

For additional support concerning the software utility please contact RTD tech support.

### 6.3 Software Programming

#### 6.3.1 API INTERFACE

Once the drivers for the GPS18190 have been properly loaded, all four RS-232/422/485 ports should be available as standard serial ports. All four ports can then be controlled using the standard serial port interfaces built into the operating system.

A description of serial port programming for operating systems is beyond the scope of this manual. Consult the operating system documentation for information on how to interface with serial ports via software.

#### 6.3.2 COM PORT NUMBERING

Serial ports (aka COM ports) are typically assigned numbers by the operating system (e.g. COM1). These numbers are typically dynamically assigned by the operating system. However, different applications may enumerate the COM ports differently, assigning different port numbers (e.g. COM3-6 vs COM5-8). When developing your own serial port application, consult your operating system's documentation for the proper method of enumerating COM ports.

---

**Note:** Some applications are written to assume that no more than four COM ports are present in a system. These applications may have compatibility issues with the Exar PCIe UART.

---

#### 6.3.3 BASE ADDRESS AND REGISTER MAPPING

The GPS18190 exposes all of the registers available on the Exar XR17D154. The register set of the XR17D154 mimics the standard 16C550 UART register map. However, the XR17D154 contains some additional registers not found in a typical ISA-based UART.

Additionally, the base address of the GPS18190's serial ports will be different than the standard PC serial port locations (0x3F8, 0x2F8, etc). The GPS18190 is a memory mapped device. Since it is PCI-based, it may be mapped to any location within the 4GB address space of the CPU. The base address of PCI devices is determined by the CPU's BIOS and operating system at boot time.

The register-level differences between the GPS18190 and a standard 16C550 UART should be abstracted via the software drivers. Most users will not need to concern themselves with the actual registers of the board. If one is interested in directly accessing the registers of the board, consult the XR17D154 data sheet available from Exar.

## 7 Troubleshooting

---

If you are having problems with your system, please try the following initial steps:

- **Simplify the System** – Remove modules one at a time from your system to see if there is a specific module that is causing a problem. Perform your troubleshooting with the least number of modules in the system possible.
- **Swap Components** – Try replacing parts in the system one at a time with similar parts to determine if a part is faulty or if a type of part is configured incorrectly.

If problems persist, or you have questions about configuring this product, contact RTD Embedded Technologies via the following methods:

Phone: +1-814-234-8087  
E-Mail: [techsupport@rtd.com](mailto:techsupport@rtd.com)

Be sure to check the RTD web site (<http://www.rtd.com>) frequently for product updates, including newer versions of the board manual and application software.

## 8 Additional Information

---

### 8.1 PC/104 Specifications

A copy of the latest PC/104 specifications can be found on the webpage for the PC/104 Embedded Consortium:

[www.pc104.org](http://www.pc104.org)

### 8.2 PCI and PCI Express Specification

A copy of the latest PCI and PCI Express specifications can be found on the webpage for the PCI Special Interest Group:

[www.pcisig.com](http://www.pcisig.com)

## 9 Limited Warranty

---

RTD Embedded Technologies, Inc. warrants the hardware and software products it manufactures and produces to be free from defects in materials and workmanship for one year following the date of shipment from RTD Embedded Technologies, Inc. This warranty is limited to the original purchaser of product and is not transferable.

During the one year warranty period, RTD Embedded Technologies will repair or replace, at its option, any defective products or parts at no additional charge, provided that the product is returned, shipping prepaid, to RTD Embedded Technologies. All replaced parts and products become the property of RTD Embedded Technologies. Before returning any product for repair, customers are required to contact the factory for a Return Material Authorization (RMA) number.

This limited warranty does not extend to any products which have been damaged as a result of accident, misuse, abuse (such as: use of incorrect input voltages, improper or insufficient ventilation, failure to follow the operating instructions that are provided by RTD Embedded Technologies, "acts of God" or other contingencies beyond the control of RTD Embedded Technologies), or as a result of service or modification by anyone other than RTD Embedded Technologies. Except as expressly set forth above, no other warranties are expressed or implied, including, but not limited to, any implied warranties of merchantability and fitness for a particular purpose, and RTD Embedded Technologies expressly disclaims all warranties not stated herein. All implied warranties, including implied warranties for merchantability and fitness for a particular purpose, are limited to the duration of this warranty. In the event the product is not free from defects as warranted above, the purchaser's sole remedy shall be repair or replacement as provided above. Under no circumstances will RTD Embedded Technologies be liable to the purchaser or any user for any damages, including any incidental or consequential damages, expenses, lost profits, lost savings, or other damages arising out of the use or inability to use the product.

Some states do not allow the exclusion or limitation of incidental or consequential damages for consumer products, and some states do not allow limitations on how long an implied warranty lasts, so the above limitations or exclusions may not apply to you.

This warranty gives you specific legal rights, and you may also have other rights which vary from state to state.



**RTD Embedded Technologies, Inc.**

103 Innovation Boulevard  
State College, PA 16803 USA  
Telephone: 814-234-8087  
Fax: 814-234-5218

[www.rtd.com](http://www.rtd.com)

[sales@rtd.com](mailto:sales@rtd.com)  
[techsupport@rtd.com](mailto:techsupport@rtd.com)

