

Uptmate Technology Co., LTD

Uptmate Management Software 1.0

<< UMS 1.0 >>

P/D No.:

Software Version: *Beta*

Platform: UX-8510C

Signage Software: LXSignage 1.0

Revision

Item	Issues Dates	Description	Actions	Date
1	2010/12/3	First Release Edition A01		
2	2010/12/16	Revised for A02	Upgrade for weather link..	
3				
4				
5				
6				
7				

Uptmate Technology Co., LTD

幸楷科技股份有限公司

Uptmate Management Software

<< UMS 1.0 >>

User Manual

(Platform: LXSignage + UX-8510C)

Software Version: Beta

Department	RD/PM
Prepared by	
Approved by	

Uptmate Technology Co., LTD

Copyright

This technical document, including photographs and software, is protected under international copyright laws, with all rights reserved. Neither this manual, nor any of the materials contained herein, may be reproduced without written consent of the company or their respective owners.

© Copyright Sep. 2010

Disclaimer

The information in this document is subject to change without notice. The manufacturer makes no representations or warranties, with respect to the contents hereof, and specifically disclaims any implied warranties of merchantability or fitness for any particular purpose. The manufacturer reserves the right to revise this publication and to make changes from time to time in the content hereof without obligation of the manufacturer to notify any person of such revision or changes.

Trademark Recognition

The product names mentioned in this compatibility test report are the properties of their respective owners and are acknowledged.

Office:

Address: 6F., No.5, Jian 1st Rd.,
Zhonghe City, Taipei County 235, Taiwan (R.O.C.)

Tel: +886-2-32342986

Fax: +886-2-32341128

Service Centers

Taiwan	sales@uptmate.com.tw
---------------	--

Before Start!!

First of all, we would like to thank you for using our products. UMS 1.0(Uptmate Management Software 1.0) is professional signage management software which is a portion of Uptmate Signage System. UMS 1.0 designs for Uptmate Signage Player (UX-8510 series) and Uptmate Signage Software (LXSignage). And Uptmate develop UMS1.0 with most cutting edge concept in signage management and content upgrade. For example, UMS 1.0 is scalable depending on different situations or conditions. You don't need to prepare any server (Control or Content Server) for your signage system in some small projects. That means you can manage your signage system in a most efficient way. And most important of all, UMS 1.0 can work on any PC or Notebook with any browser (such as IE 8 or Firefox.). You don't need to install any software in your PC. That would be easy for any user. Hope you will like it and please enjoy it!!

How to Start??

1. Prepare a PC or Notebook with browser (IE8 or Firefox) as UMS console
2. Power on Uptmate Signage System (UX-8510 series with LXSignage)
3. Please follow the procedure as below:

First, Check Network Status of Signage!!

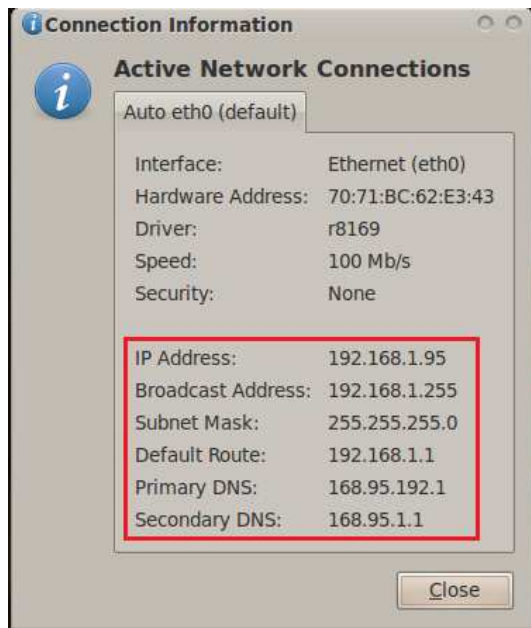
1. Connection Icon:
You can find a Connection Icon on the Task Bar in Signage



2. Check IP address of Signage:
Right-Click the connection icon -> Connection Information

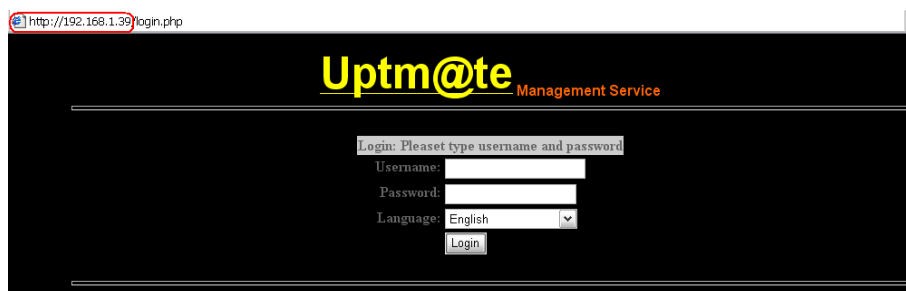


And you can find the internet information of that Signage as below:



Login from Console (another PC or Notebook):

1. Execute browser of any PC (as Console)
2. Connect to the Signage you want to Control
Type the IP address you get in the previous step.
Key-in http://ip_address/ (e.g. <http://192.168.1.39/>) as the link



3. Enter the Username & Password

Username: admin (Default)

Password: admin (Default)

4. Click "Login" to Login

Device Information

This page contains all the information about the signage in control. There are 4 zones in this page.

The screenshot shows the UMS web interface in Internet Explorer. The browser address bar shows 'http://192.168.1.95/main-device.php'. The page title is 'UMS - Windows Internet Explorer'. The main content area is titled 'Device' and contains two sections: 'Device Info' and 'Snapshot'.

The 'Device Info' section is circled in red and labeled 'Device Information Area'. It contains a table with the following data:

Item	Information
Host name	Uptmate001
Version	LX v1.0 Beta
Network connection	eth0
Mac address	70:71:bc:62:e3:43
IP address	192.168.1.95
Submask	255.255.255.0
Default gateway	192.168.1.1
DNS	168.95.1.1
System	Ubuntu
CPU	model name : Intel(R) Atom(TM) CPU D510 @ 1.66GHz model name : Intel(R) Atom(TM) CPU D510 @ 1.66GHz model name : Intel(R) Atom(TM) CPU D510 @ 1.66GHz model name : Intel(R) Atom(TM) CPU D510 @ 1.66GHz
RAM	MemTotal: 1009720 kB MemFree: 46652 kB
Disk size	3.5G
Free space	488M
Resolution	1920x1080 @0.0*

The 'Snapshot' section is circled in red and labeled 'Screenshot'. It shows a live view of the signage display, which includes a clock showing '18:09:40' and the text 'Welcome to Uptmate Technology'.

Below the 'Snapshot' is the 'Network Settings' section, which is circled in red and labeled 'Network Setting'. It contains a 'Setting' section with radio buttons for 'Set IP automatically (by DHCP)' and 'Set IP manually'. The 'Set IP manually' section has input fields for IP address (192.168.1.95), Submask (255.255.255.0), Default Gateway (192.168.1.1), and Master DNS (168.95.1.1).

1. Device Info

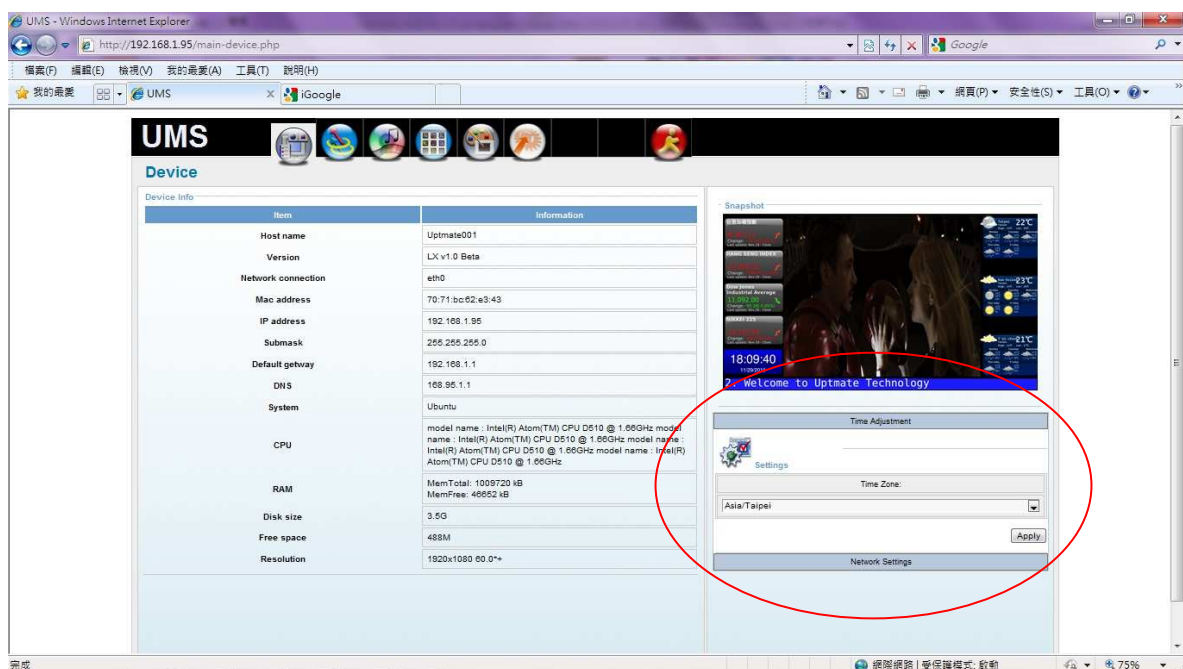
This area shows the basic information of the signage that you can check them from remote. Information includes the hardware (such as CPU type, Memory and Storage status), software (version of LXSignage and so on) status of this signage. It is an overview for this signage that can provide users to have a clear picture of signage.

2. Screen Shot

This area is a screenshot of what this signage is showing now. You can refresh it again by refreshing the webpage in browser.

3. Time Zone Adjustment

This function can let you adjust the Time Zone of your signage. You can select the time zone from the menu. Click "Apply" and it will change the time zone of the signage.

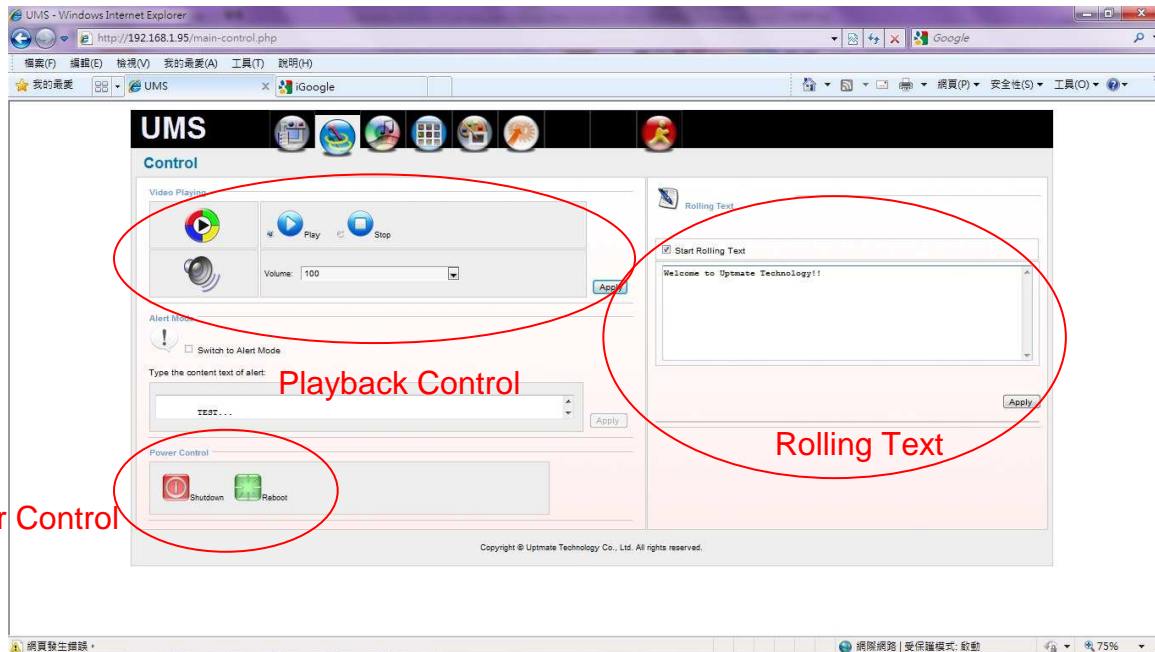


4. Network Settings

This is for internet setting. You can change the internet setting of the signage with automatic IP address or manually setup an IP address.

Control

The main function of this page is to control the actions of the signage immediately. For example, you can stop or play immediately from remote. You can also enter rolling text or Alert Information and the signage will show after "Apply". And you can also "Shut Down" or "Reboot" from the remote console even the signage is far away from console.



1. Video Playing

- ◆ Play or Stop: To remote control “Play” or “Stop”
- ◆ Volume: To Select the Volume of Signage

2. Power Control

- ◆ Shutdown: Remote shutdown
- ◆ Reboot: Remote reboot

3. Alert Mode

- ◆ Show Alert Message at urgent case (Disable now!!)

4. Rolling Text

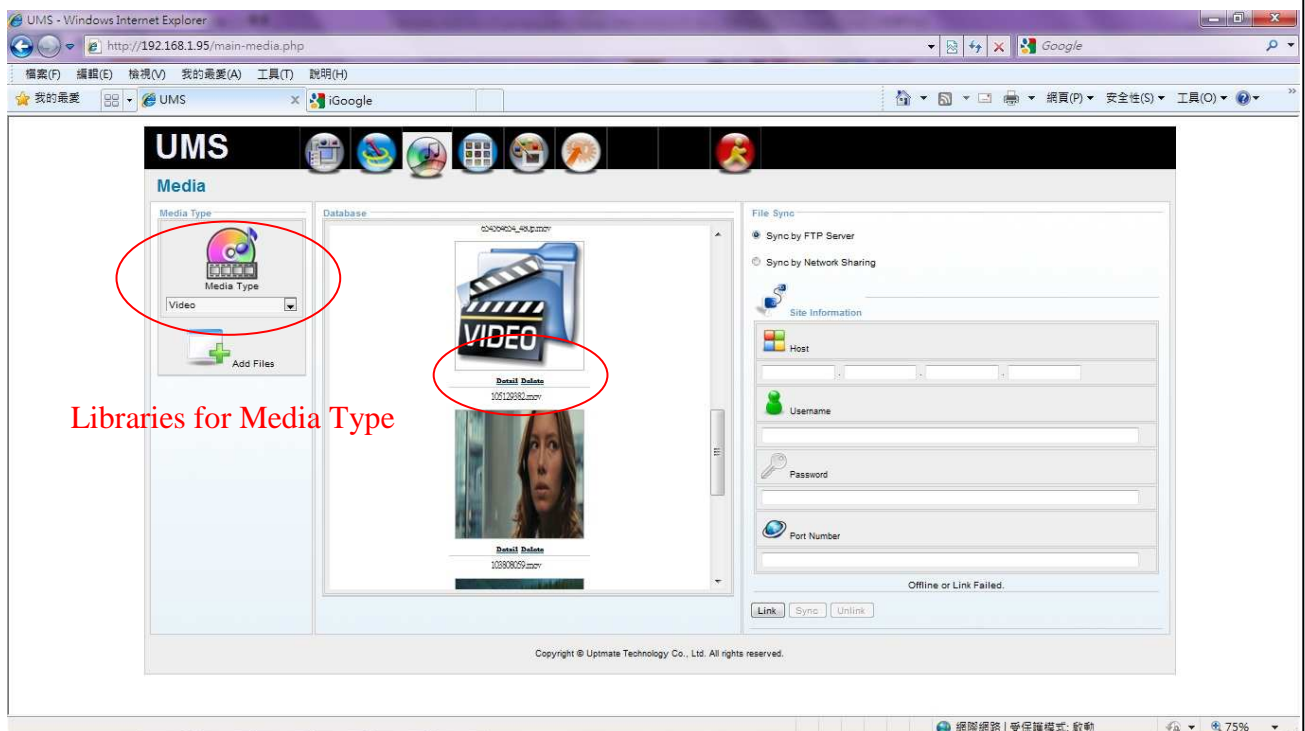
- ◆ Start Rolling Text:
Can enable or disable the rolling text remotely
- ◆ Enter New Message
 - Key in the message in the Text Area
 - **“Apply” one message at a time**
 - **Max. 10 messages** (the 11th message will replace the 1st one)
 - **Multi-Language** is acceptable

Media

This page is for content management and content delivery to every signage. You can manage the advertisement content remotely. And UMS1.0 provides several functions for you to manage and delivery easily. Please see the introductions as below:

◆ Content Management

You can check what's inside the signage. Just select Media Type to choose "Video" Database or "Picture" Database. You will see all the content in each database. For pictures, UMS will provide you the thumbnail automatically. For those large video file, you can click the "Detail" to preview of Video Content. Except preview, you can also delete these files that already in Database. All of these functions you can do far away from the signage.



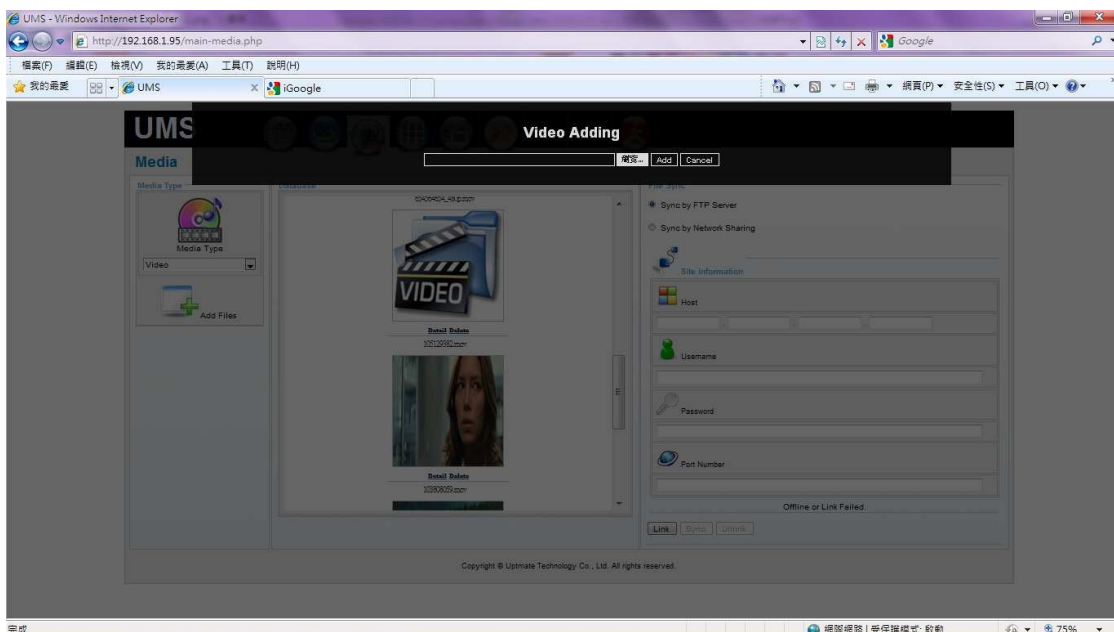
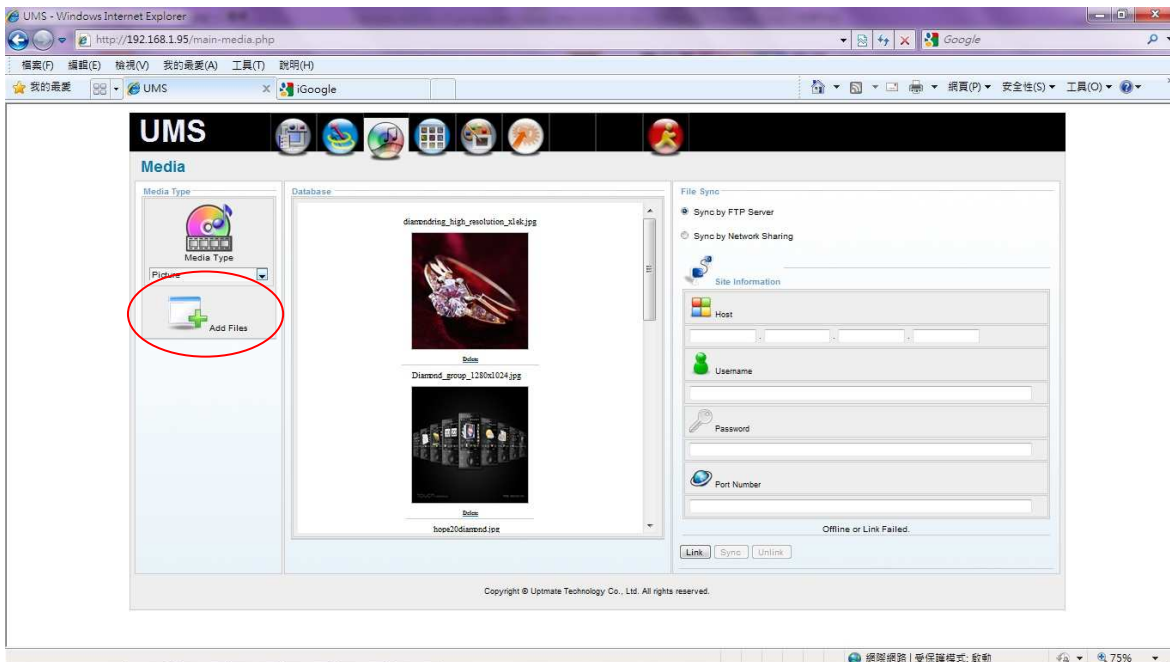
Libraries for Media Type

◆ Content Delivery

There has 3 ways for delivering the content. They are:

◆ Directly Upload to Signage

You can use “Add File” to upload the content to the “video database” or “picture database” in signage.

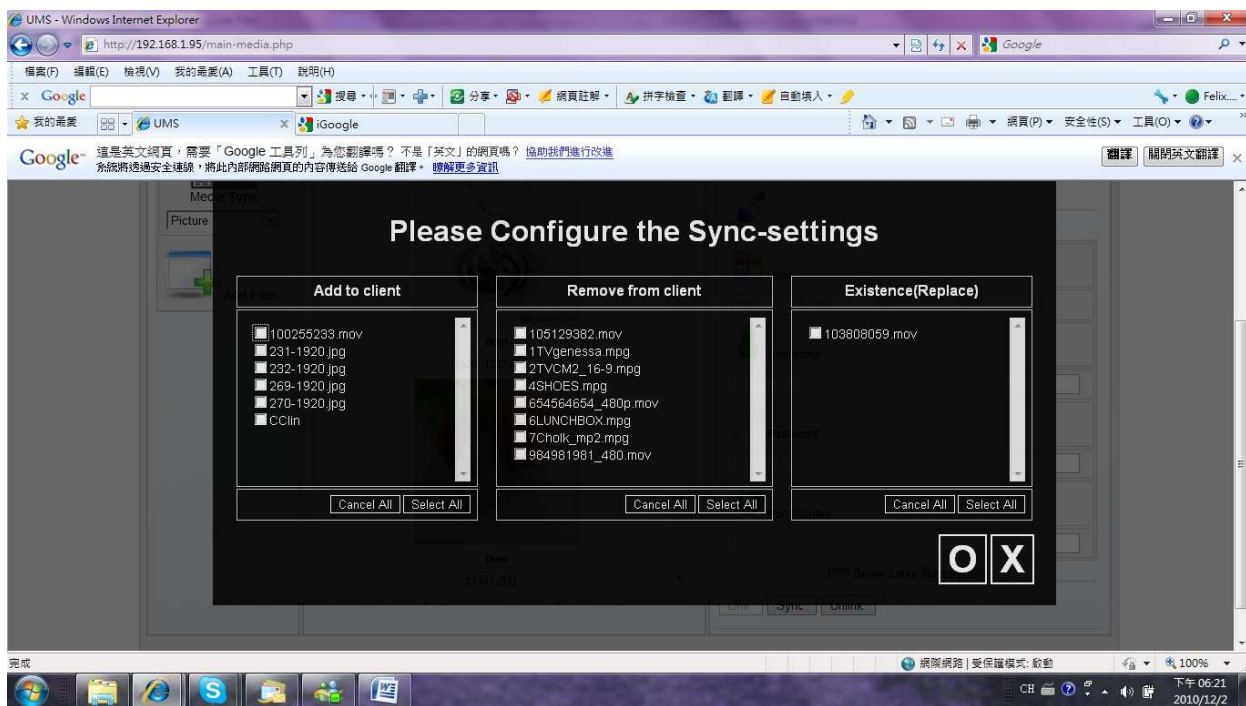


◆ **Download from FTP Server**

You can select to download files from FTP server. And you can select the rules for Sync. Just key in the ftp address, account and password in the 3rd column and then you can start to Sync the content. And UMS1.0 also provides several rules for you to Sync. You can select the most suitable one for your signage.

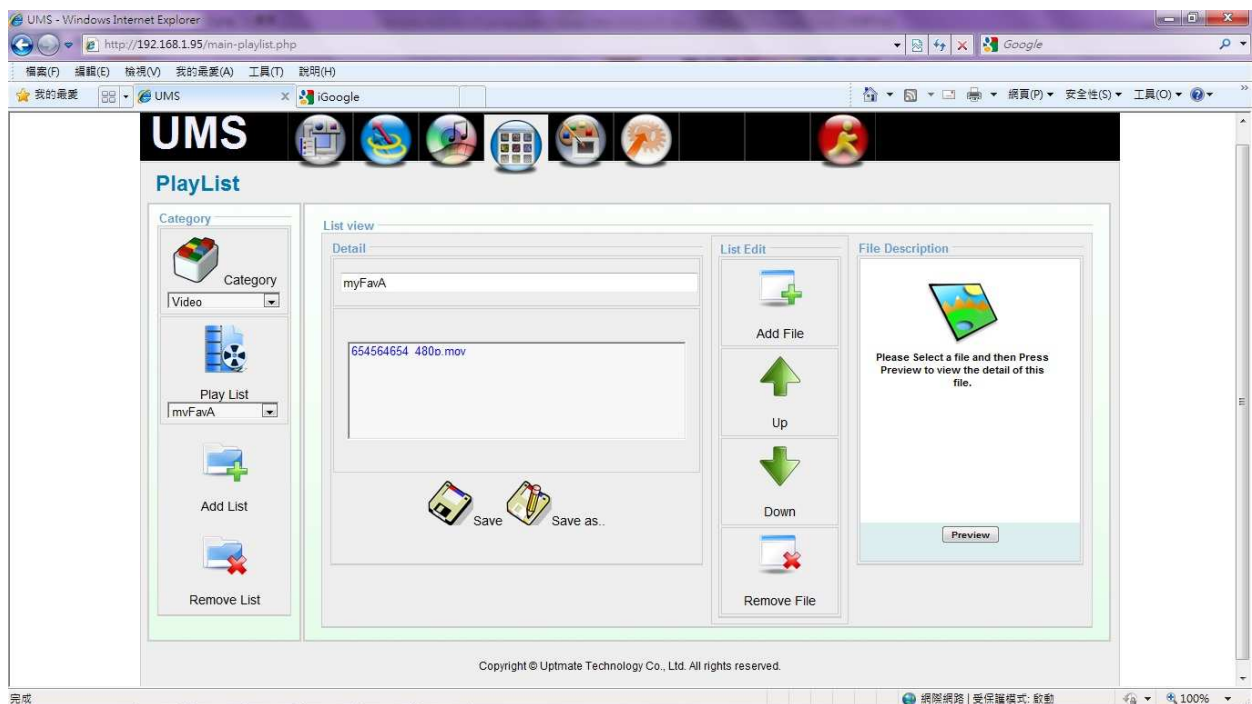
◆ **Download from Network Sharing**

UMS1.0 also provides another way for you to Sync your contents. It's by network sharing. That is the concept with the sharing disk for a specific disk. Just key in requested information about the shared disk and it will start to Sync under your request.



Playlist

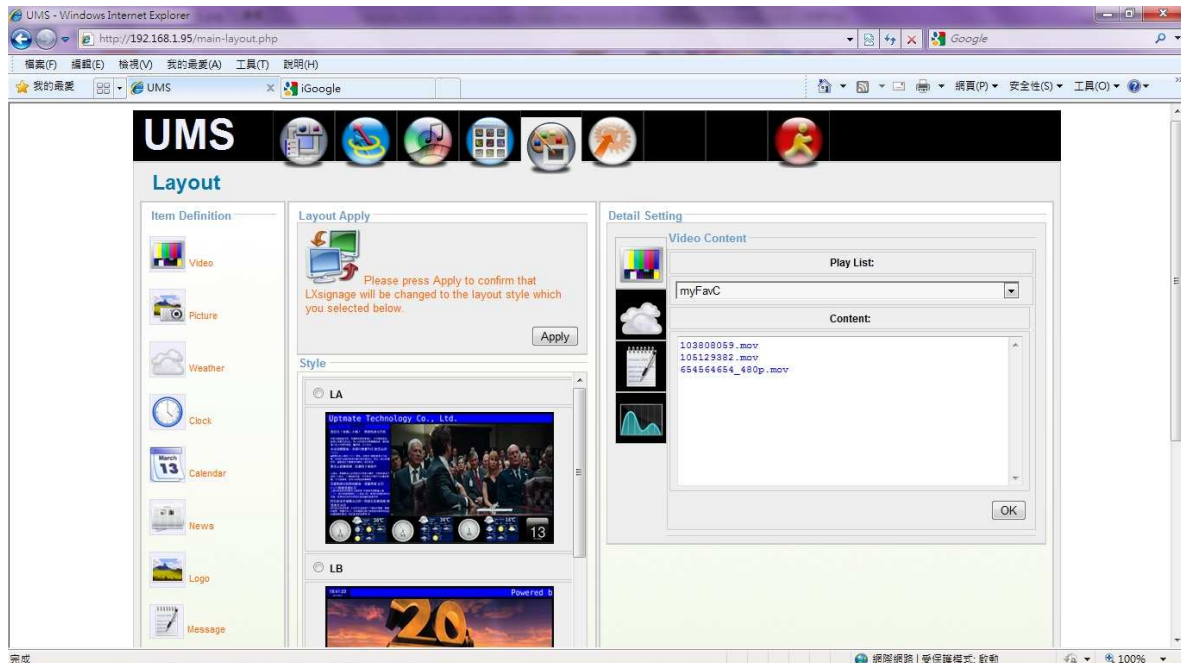
You can create, edit, and delete the playlist in this page. At first, you can create a playlist. Secondly, you can add files to this playlist or remove them. You can also change the sequence of these files. And you can also preview these files during your editing. Finally, you just need to “Save” the playlist when it’s ready.



Layout

The main function of this page is let you change the screen layout dynamically from the remote. That mean you don't need to setup at the signage site. And you also do not need to reboot the signage after changing the screen layout.

UMS1.0 prepares several templates for you to substitute. You can change the screen layout everyday if you want. And UMS also provides several software modules for you to get the public information. That will make your signage more vivid and more friendly with these widget. There will have three columns in this page. Let me briefly introduce to you.

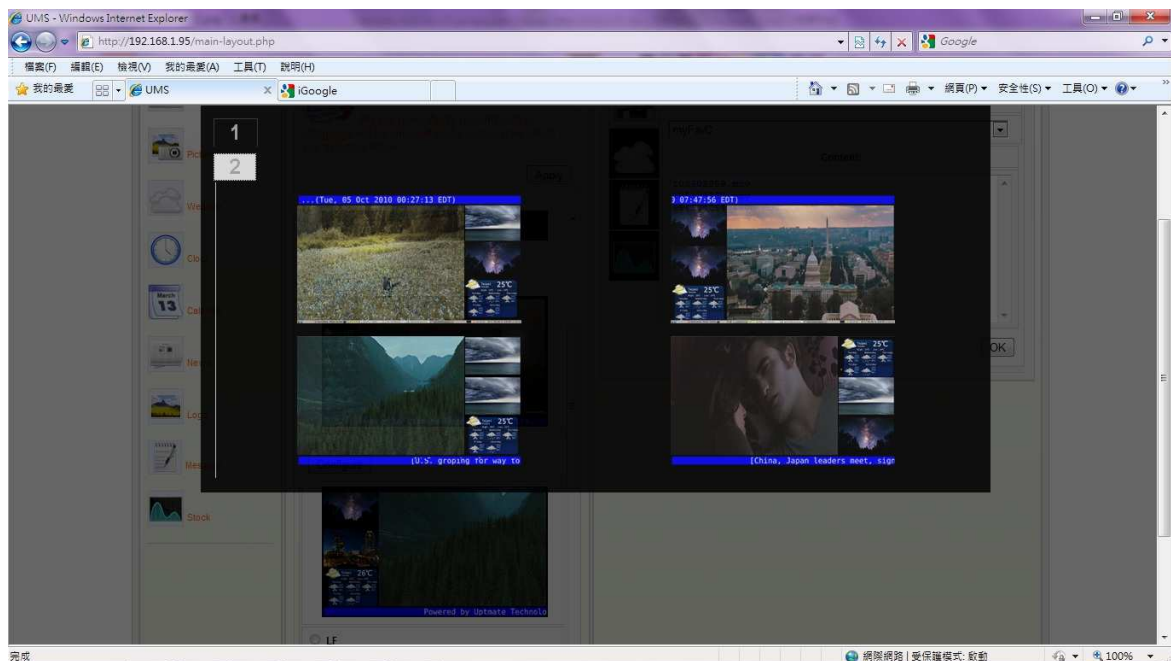
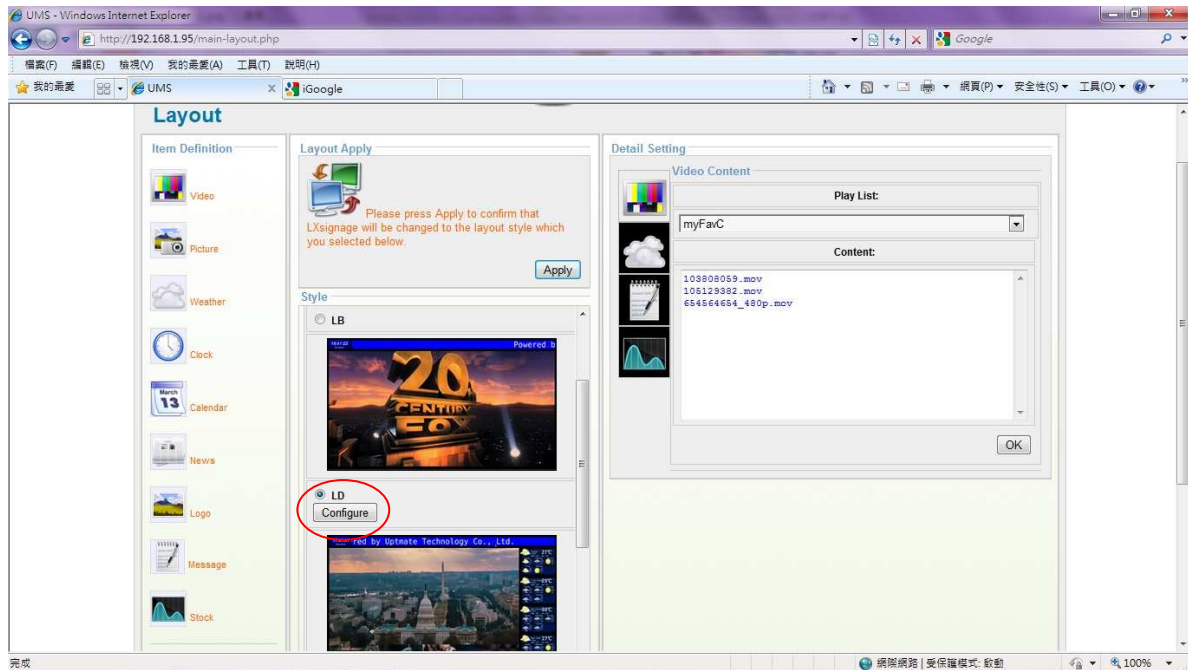


◆ Item Definition

First column (left) is the definition and explanation of each icon we provide. We provide up to 9 software modules for you. All of them will provide useful information to audience. And this will be helpful to attract eyes from viewer.

◆ Template Selection and Layout Apply

The middle column is all the templates you can select. First you can choose which style you want. After that, there will have a “Configure” button. Click this “Configure” button; you will get more screen layout with different placements (4 placements for 1 page). Choose one and click “Apply” on the top. The signage will start to change the screen layout automatically. **That would need about 30 seconds for changing the layout.**

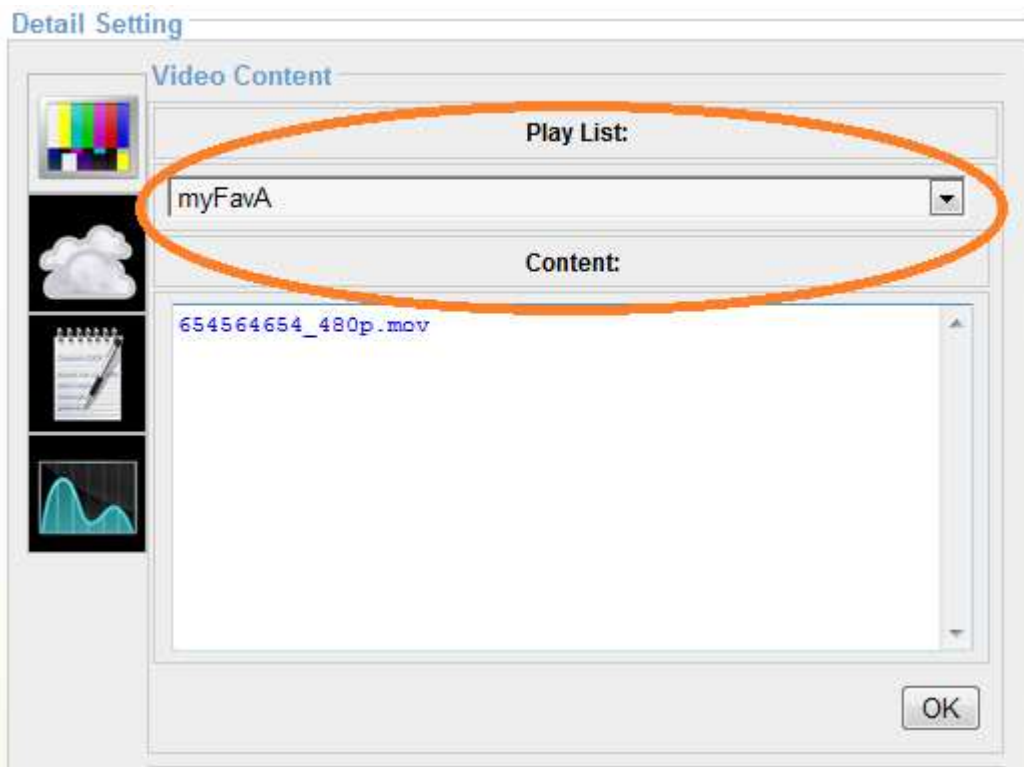


◆ Setting for Each Module in New Layout

You can set the detail setting in the 3rd column (right column). You can type the link of RSS, weather code, clock for different time zone area and so on.

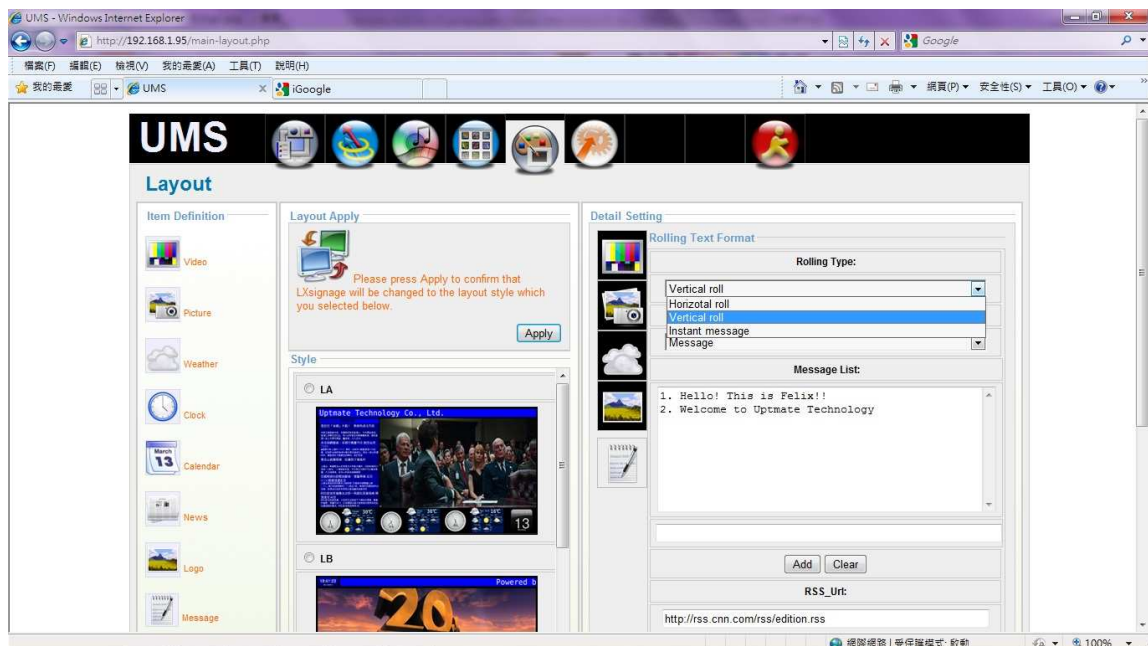
✚ Video Content

You can select a playlist that you create in “Playlist” page. And the signage will start to play new playlist after click “Ok”.



✚ Default Rolling Text

You can edit the default rolling message at this setting. And you can also define the method of how to roll (Horizontal, Vertical, or Trigger by Instant Message). You can also select the “source” from **Instant Message** or **RSS title** for the rolling text.



Weather Module

You can show weather of several cities in your specific applications such as hotel and airport. And the signage will show as below:



How to setup the Weather module

a.) Click the inform icon.

And you can check the Location code from

<http://www.weather.com/>

Detail Setting

Weather Format

City #1:

TWXX0021

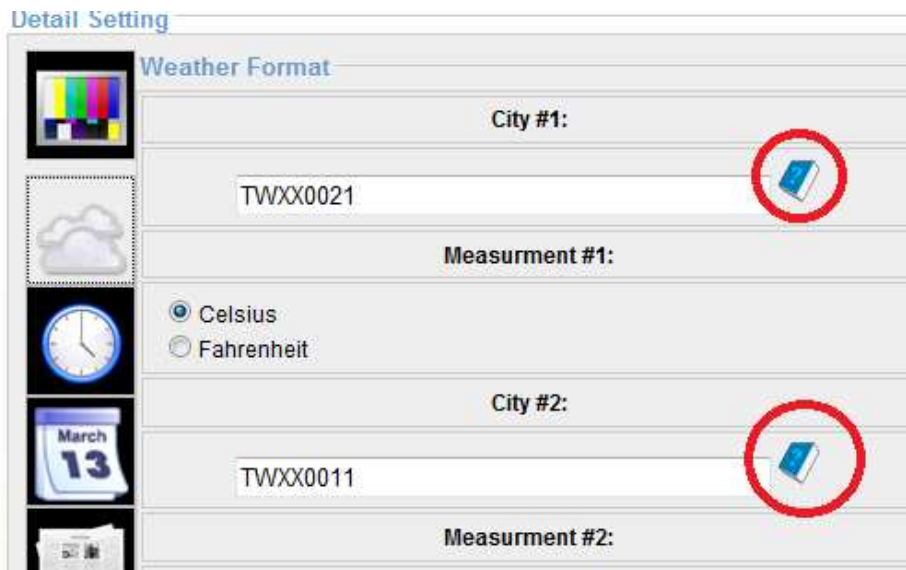
Measurement #1:

Celsius
 Fahrenheit

City #2:

TWXX0011

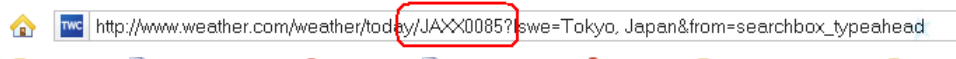
Measurement #2:



b.) Search for the Location



c.) Identify the Location Code as below:



d.) Key in the weather code in setting area

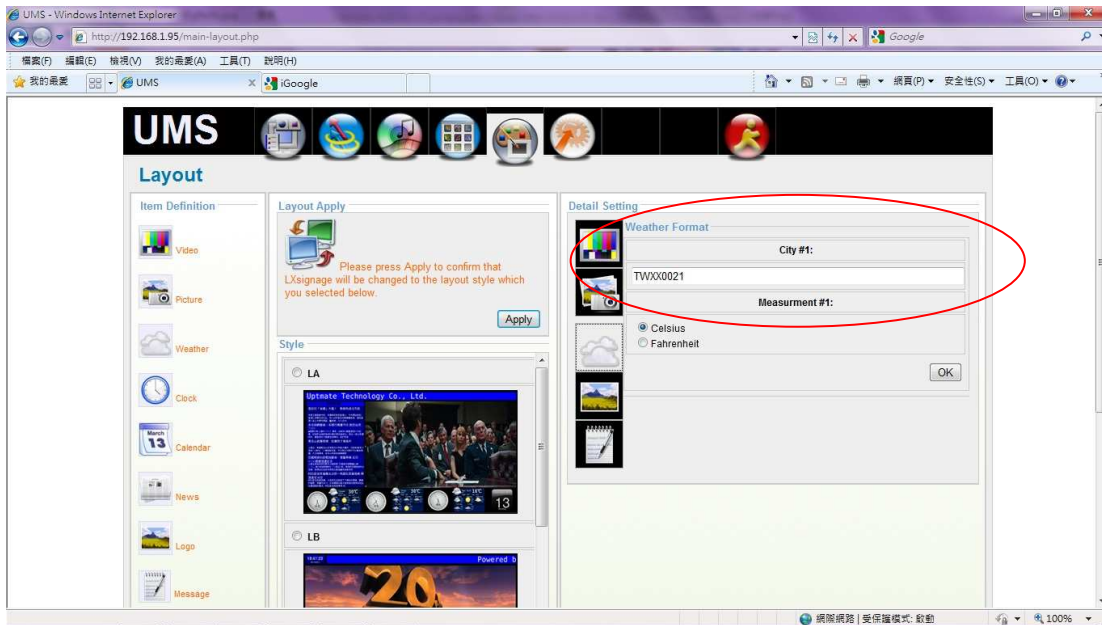
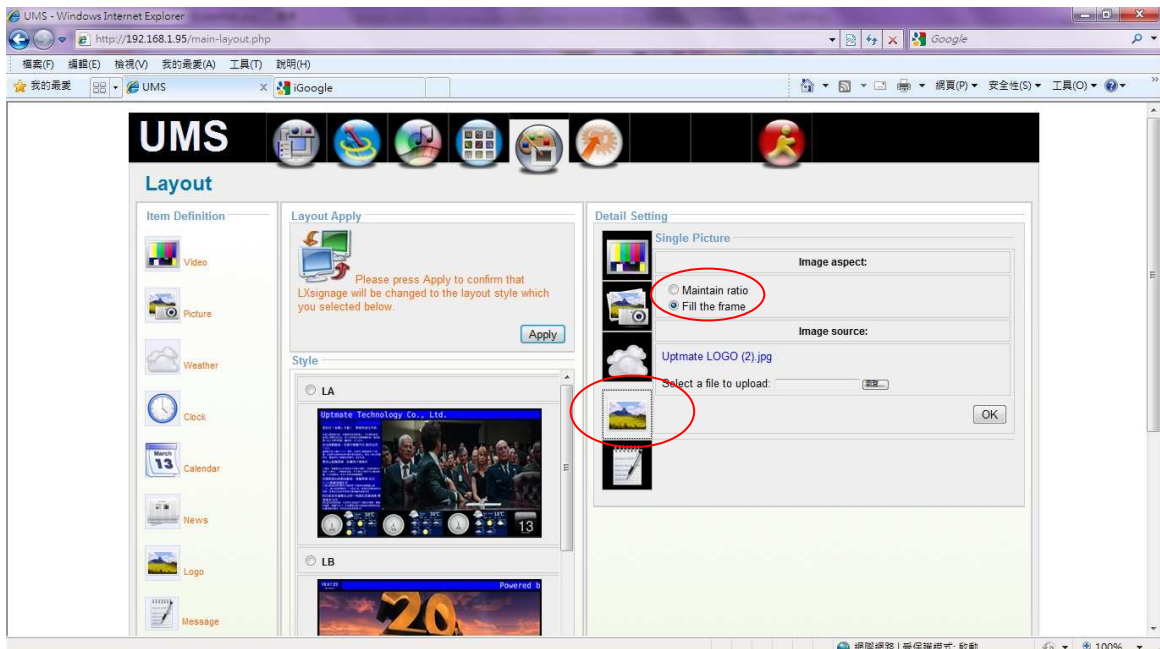


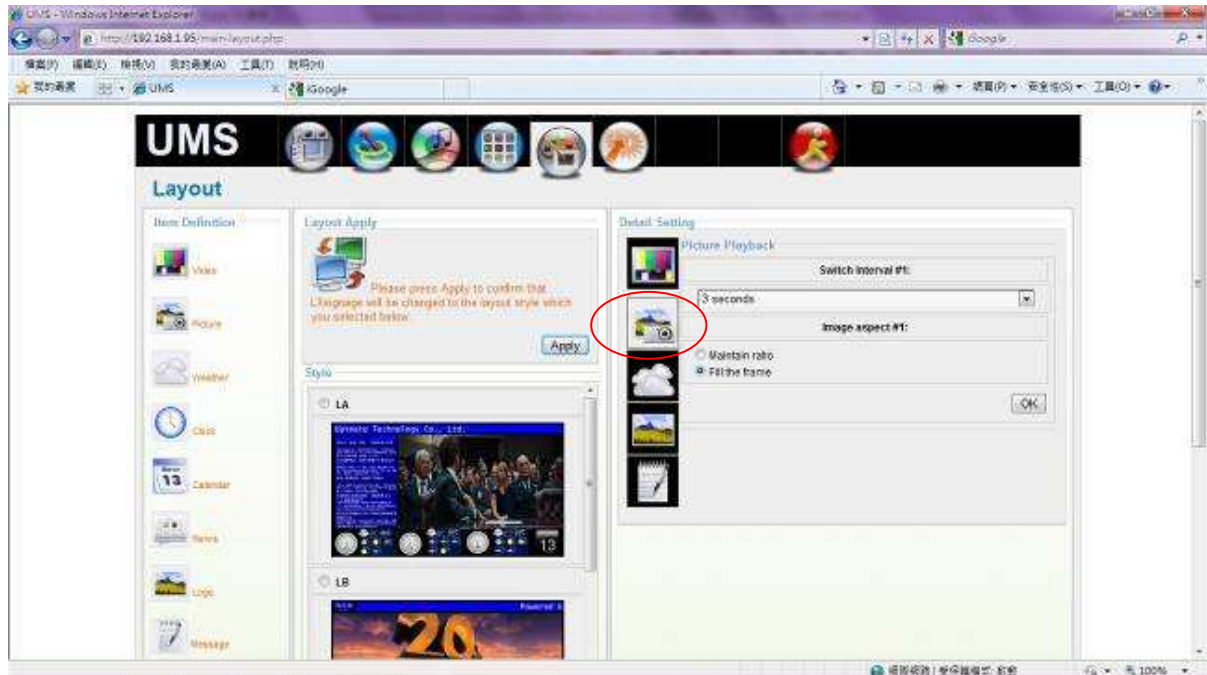
Photo for Logo

UMS1.0 reserves a special area for your logo. You just need to upload the logo (only one) and it will keep showing no matter what the other zone is playing.



Photos for Slide Show

Photo Module can allow you to show the photos in slideshow. And you can adjust the interval and aspect ratio for pictures.

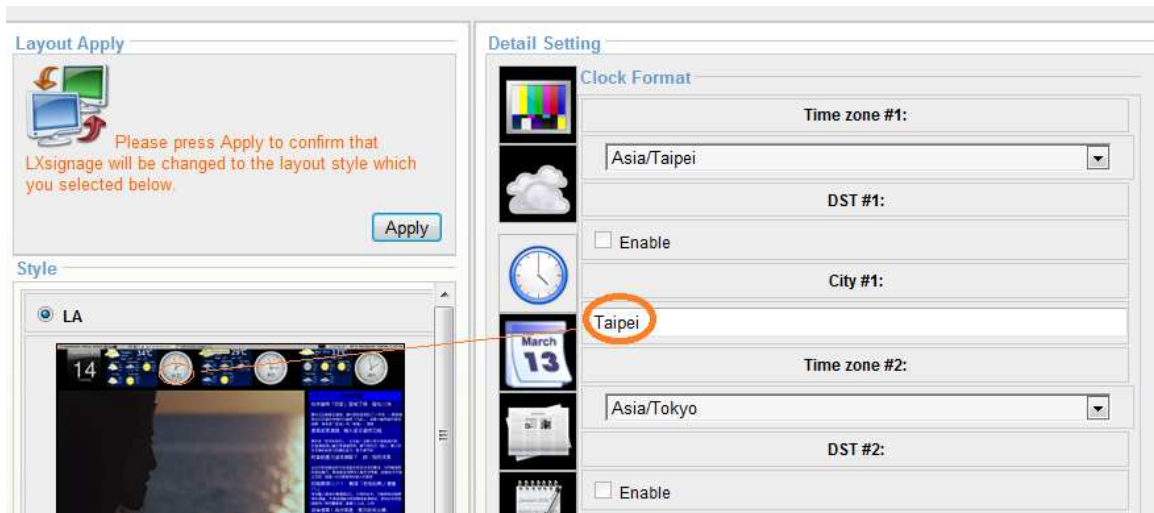


Clock

There will have two types of “clock” you can choose in UMS. One is “Analog Clock” and the other is “Digital Clock”. Please see the description as below:

➤ Analog Clock

You can setup several clocks for specific application such as hotel, airport and so on. First, you choose the Time Zone of the clock want to show. Enable DST (Daylight Saving Time) if necessary. And Type the city name that you want to show on the Clock.



➤ Digital Clock

You can choose a “Digital Clock” but it will be the same as the System Clock of Signage. You cannot adjust anything unless adjust the system clock.

14:18:48
09/04/2010

e Technology Co., Ltd.



September 2010

Su	Mo	Tu	We	Th	Fr	Sa
			01	02	03	04
05	06	07	08	09	10	11
12	13	14	15	16	17	18
19	20	21	22	23	24	25
26	27	28	29	30	31	

Tokyo Japan 33°

High: 33°	Low: 26°
Saturday 33° 26°	Sunday 32° 26°
Tuesday 32° 26°	Wednesday 32° 26°

Sapporo Japan 27°

High: 27°	Low: 23°
Saturday 27° 23°	Sunday 29° 23°
Tuesday 26° 16°	Wednesday 25° 16°

Taipei Taiwan 33°

High: 33°	Low: 27°
-----------	----------

▼NHKニュース

関東以西の各地 猛烈な暑さ

4日も東京の都心や名古屋で午前中から気温が35度以上の猛暑日となるなど、関東から西の各地で猛烈な暑さとなっています。気象庁は、こまめに水分を取って熱

台風9号 沖縄本島に接近の見通し

台風9号は、那覇市の南の海上を西北西へ進み、4日夕方から夜にかけて沖縄本島地方に最も近づく見通しで、気象台は強風や高波などに十分注意するよう呼びかけて

家族承諾で6人目の脳死判定

東北地方の病院で治療を受けていた成人の男性が家族の承諾で脳死判定を受け、脳死と判定されました。書面による本人の意思表示がないなかで脳死判定が行われたの

“警戒強めなければまん延も”

帝京大学附属病院で、9人の入院患者が抗生物質のほとんど効かない「多剤耐性アシネトバクター」という細菌の院内感染で死亡したとみられる問題で、専門家は「警

米 日本の対イラン制裁を評価

アメリカ国務省で核拡散防止問題などを担当するアインホーン特別顧問は、日本政府が3日、実効を決めたイランに対する金融制裁の強化について、非常に厳しい内容

向精神薬 不適切入手目立つ

複数の医療機関から同じ種類の向精神薬を必要以上に受け取るなど不適切に薬を入手していた生活保護の受給者が、全国で1700人上ることがわかり、厚生労働省

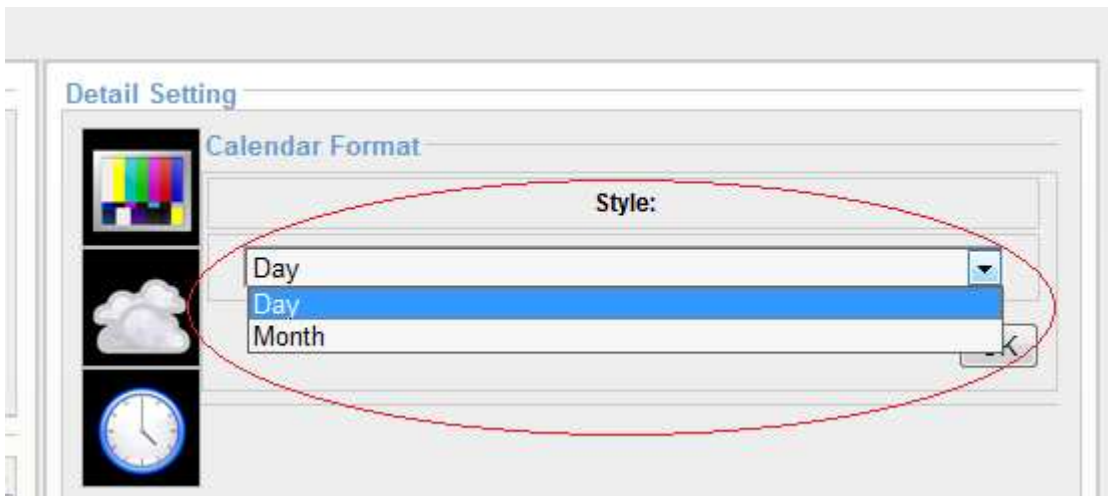
地震で市当局が非常事態宣言

ニュージーランド南部のクライストチャーチ近郊でマグニチュード7.0を記録した地震で、市内では断水や停電が続いているほか、余震とみられる揺れも起きていて



Calendar

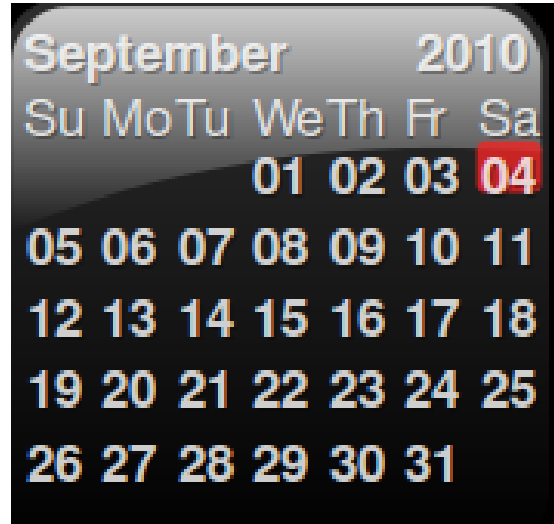
There will have two version of Calendar that you can choose. One is “Day Type” and the other is “Month Type”.



And what you will see on signage are:



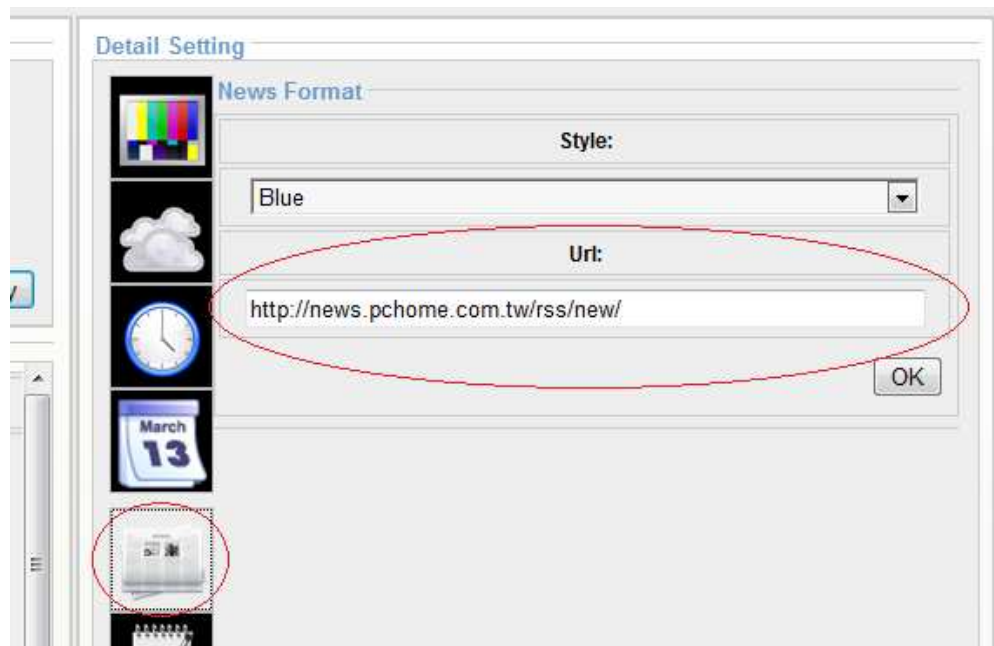
Day Type

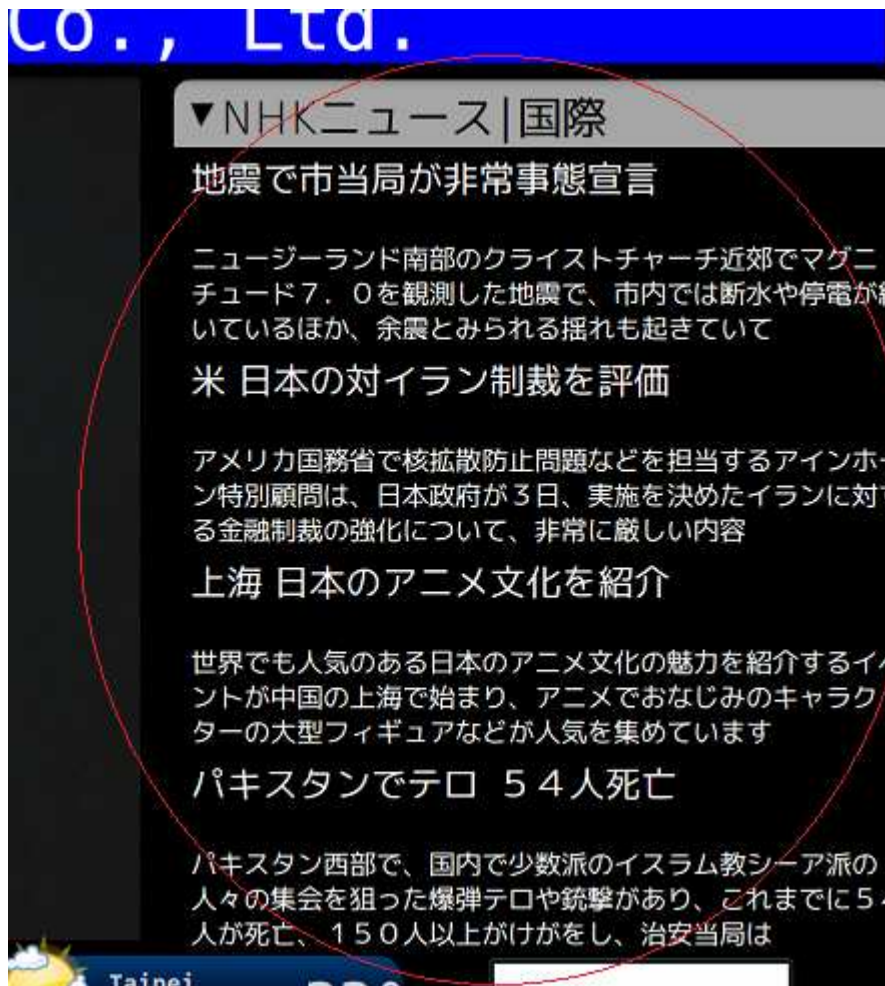


Month Type

 RSS Title

You can add the RSS title in this module. And you can change the color of the background. Default is “black” and you can set to “Blue”.

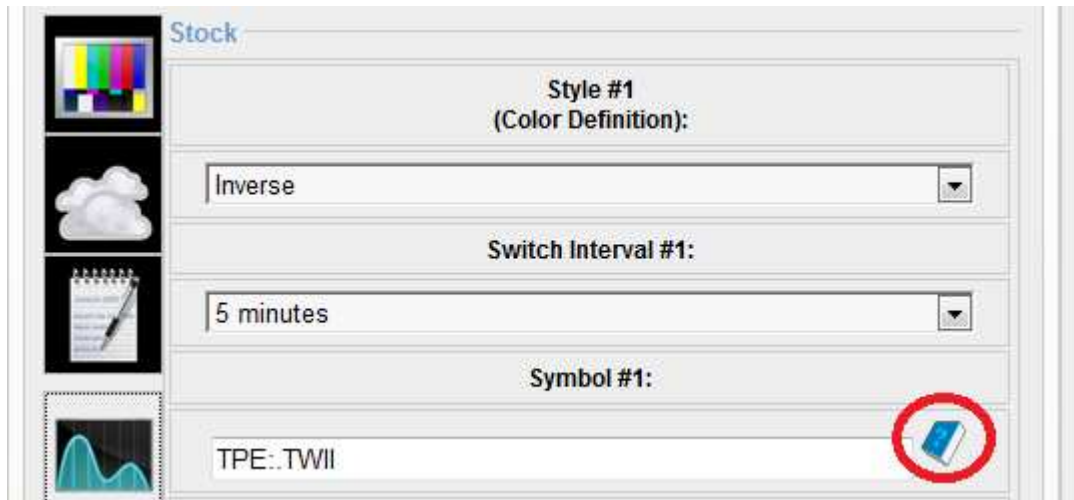




Stock Price

You can show the stock prices in this area. Just key in the stock code of each market or the corporation and you can show the price information on the signage. And it will be ok for showing several prices in one stock price module. Just separate each code by common and this stock price module will show every stock price in turn. Here is the procedure of how to set up the stock price module.

Step 1: [Click the inform icon to visit "Google Finance"](#)



<http://www.google.com/finance>

Step 2: Code of Global Stock Markets

You can find the direct link of key global markets in that page as below:

World markets <input type="checkbox"/>		
Shanghai	2,824.28	-19.33 (-0.68%)
Nikkei 225	10,169.79	+1.27 (0.01%)
Hang Seng Index	23,479.92	+31.14 (0.13%)
TSEC	8,623.74	+37.97 (0.44%)
FTSE 100	5,767.56	+125.06 (2.22%)
DJ EURO STOXX 50	2,781.39	+59.52 (2.19%)
CAC 40	3,747.04	+77.75 (2.12%)
S&P TSX	13,163.53	+15.18 (0.12%)
S&P/ASX 200	4,694.20	+18.00 (0.38%)
BSE Sensex	20,004.91	+12.21 (0.06%)

Step 3:

Click the one you want to set in the signage and you will get the code on the top of that page (e.g. Nikkei 225)

Google finance INDEXNIKKEI:N225

Example: "CSCO" or "Google"

Index **NIKKEI 225** [Watch this index](#)

Summary **10,169.47 +0.95 (0.01%)** Range 10,167.52 week 8,796. Open

News Delayed: 2:21PM IST

Step 4:

You can search a specific corporation by entering the company name in "Get quotes" column. (e.g. Nikon)

Google finance Nikon|

Example: "CSCO" or "Google"

NIKKEI 225 [Watch this stock](#)

NINYOY	Nikon Corp (ADR)	Range 1,699.00
NINOF	NIKON CORP	52 week 1,357.00
7731	NIKON CORPORATION	
	Nikon Corporation (Parent)	
7731N	NIKON CORPORATION	
NKN	NIKON CORP.	

Step 5:

And after "Enter", you will get the code as below:

Google finance TYO:7731

Example: "CSCO" or "Google"

Step 6:

Enter the codes to the symbol in UMS/ Layout/ Stock. If you want to show more than one in one module, you can use *common* to separate each code. And you can set the *time interval* for each stock price.



And “Color Definition” stands for the price trend. You can select “Default” or “Inverse”

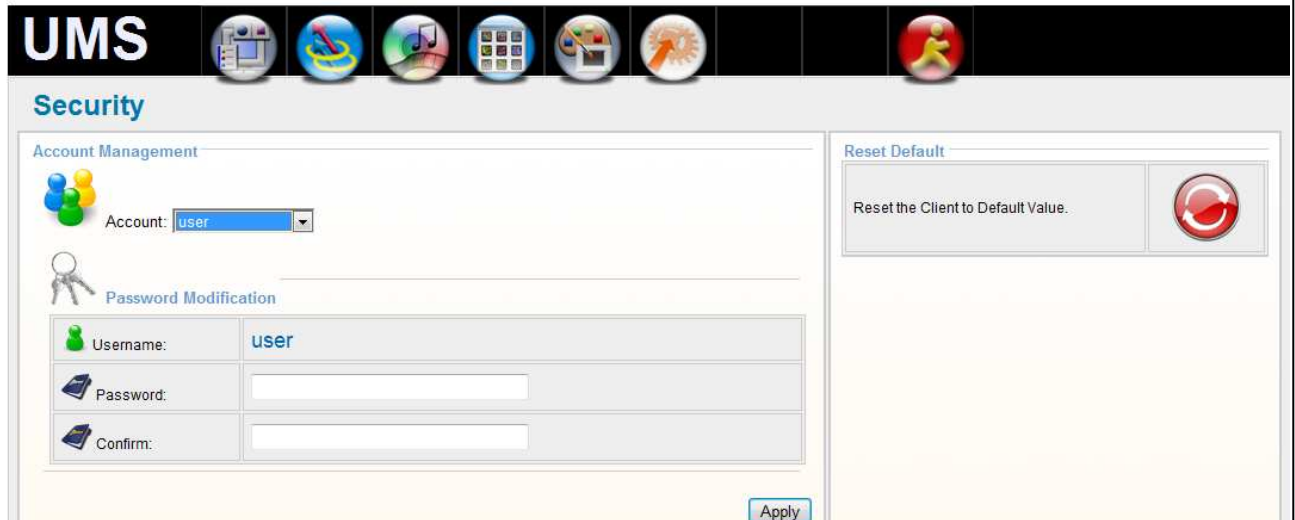
“Switch Interval” means the time interval between each stock price.

Security

There are two main functions in the “Security” page.

Account Management

Account Management can allow you change the password for each account.

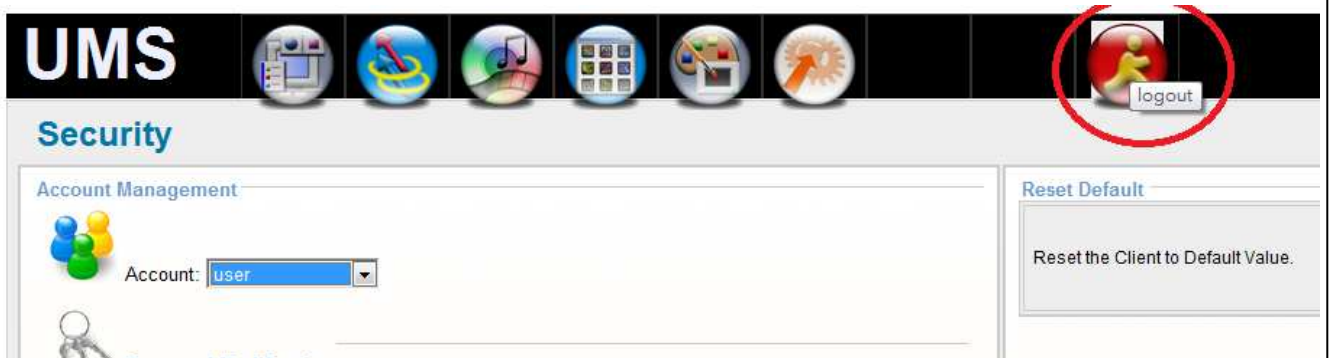


 **Reset Default**

Just reset to the “Factory Default” remotely.

Logout

To exit the UMS!!



Remark

We will keep upgrading for new software modules without notices. Please keep contacting with us for the latest version.