



# User's manual

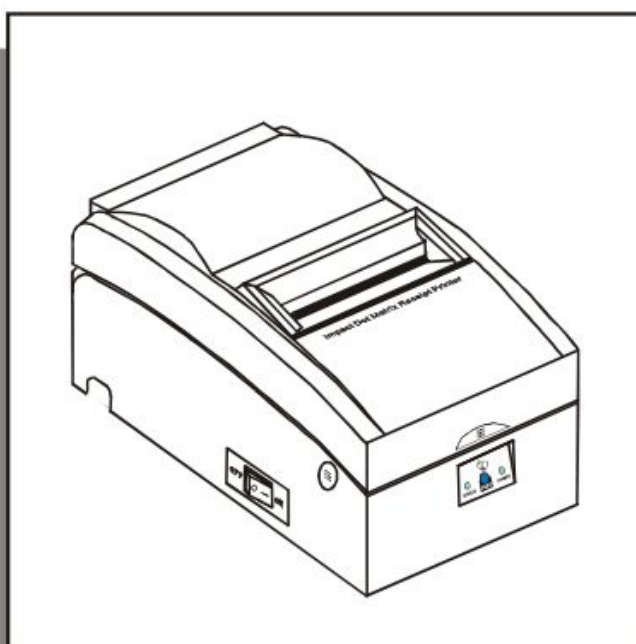
IMPACT DOT-MATRIX PRINTER

**GP-7635XX**

**GP-7645XX**

**GP-76NI**

**Pro5**



Proficient in Commercial POS Receipt Printers

**Safety Notice:**

- \*Don't touch the head of printer with anything.
- \*Don't touch the cutter blade.
- \*Don't bend the power cord excessively or place any heavy objects onto it.
- \*Don't use the printer when it is out of order. This can cause a fire or and electrocution.
- \*Only use the power cord excessively or place any heavy objects onto it.
- \*When connecting or disconnecting the plug, always hold the plug-not the cord.
- \*Keep the desiccant out of children's reach.
- \*Use only approved accessories and do not try to disassemble, repair or remodel it for yourself.
- \*Install the printer on stable surface, choose firm, level surface where avoid vibration.
- \*Don't let water or other foreign objects in the printer.
- \*Don't connect a telephone line into the peripheral drive connector.
- \*We recommend that you unplug the printer from the power outlet if no use it for long period.

**Available fields:**

- \*Print POS system Receipts
- \*Print EFT POS system Receipts
- \*Print Gym, Post, hospital, civil aviation system Receipts
- \*Print Inquiry, Service system Receipts
- \*Print Instrument test Receipts
- \*Print Tax, Tab Receipts

**Main Features:**

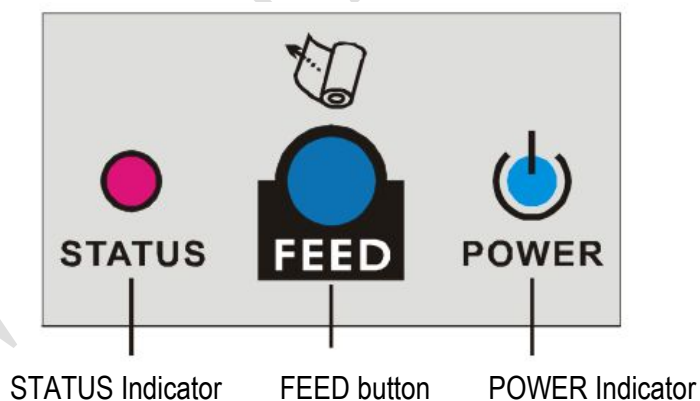
- \*Command protocol is based on ESC/POS standard.
- \*Support black mark anchor testing print.
- \*High speed and Low-noise dot printing.
- \*Various Layouts are possible by using page mode
- \*High reliability due to a stable mechanism
- \*Repeated operation and copy printing are possible.
- \*Easy paper jam clearance.
- \*Easy maintenance for tasks such as head cleaning.
- \*Built-in interface provides control capability for cash drawer.

**Technique Spec.**

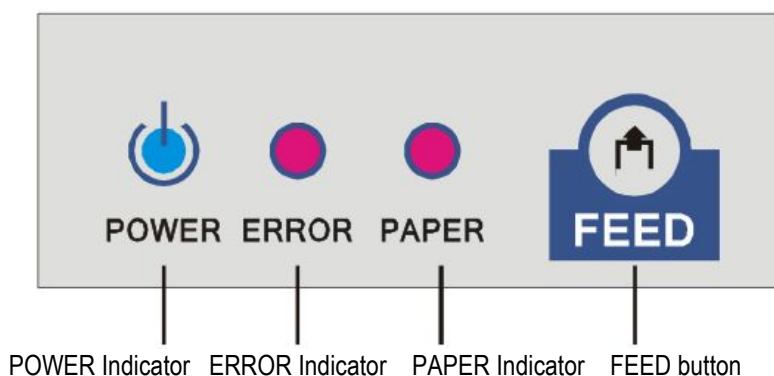
<b>Print method</b>	Impact dot-matrix printing
<b>Print speed</b>	3.5line/sec. (available for 7635XX) 4.5line/sec. (available for 7645XX) 5 line/sec. (available for Pro5)
<b>Paper width</b>	76 ± 0.5mm
<b>Print columns</b>	400dots/line
<b>Character</b>	ANK Character, Font A: 9*9 dots Font B: 7*9 dots Simplify/Traditional: 16*16 dots
<b>Print command</b>	Compatible with ESC/POS
<b>Interface</b>	Parallel, Serial, USB, Ethernet, Bluetooth
<b>Cutter</b>	full or partial cut
<b>Reliability print</b>	10 million lines (available for 76XX) 15 million lines (available for Pro5)
<b>Copy capability</b>	One original and two copies
<b>Paper thickness</b>	0.05~0.08mm (total thickness ≤ 0.20)
<b>Adaptor power input</b>	AC 110V/220V, 50~60Hz
<b>Adaptor power output</b>	DC24V/2A
<b>Printer power input</b>	DC 24V/2A
<b>Cash Drawer</b>	DC 24V/1A
<b>Work Temperature</b>	5~45°C, Dampness: 10~80%
<b>Storage temperature</b>	-10~50°C, Dampness: 10~90%

## Buttons and Indicator

### Available for GP-7635XX



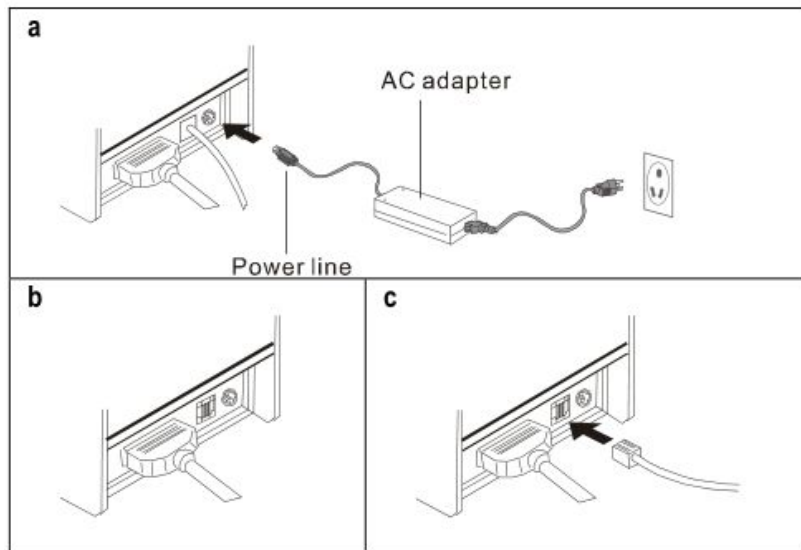
### Available for GP-7645XX, GP-76NI, Pro5



## Connection

**Note:** take 76NI with auto cutter for example, other models are similar.

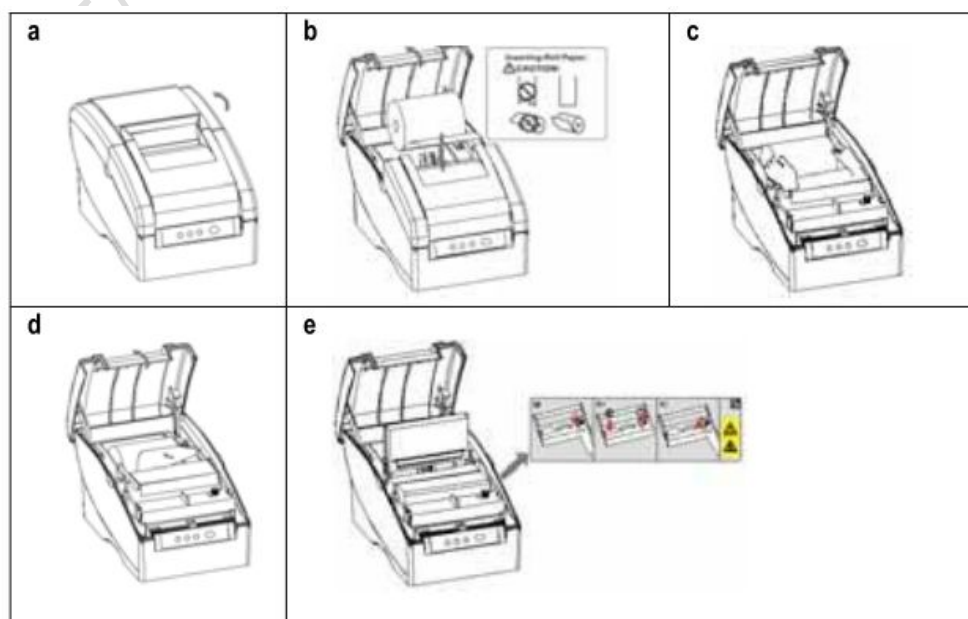
- Connect the adapter cable to power connector of the printer.
- Connect the data cable to the connector on the rear panel of the printer.
- Connect the cash drawer's RJ-11 phone jack to the connector on the rear panel.



## Installation of Paper Roll and Ink Ribbon

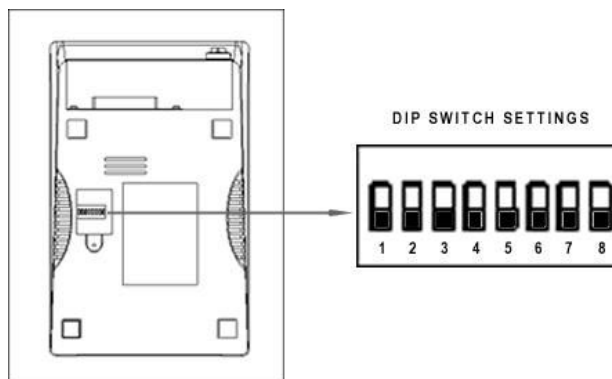
Please install after turn on the printer with indicators on.

- Open the top cover.
- Install the paper roll as the picture showing direction.
- Insert the end of the bottom paper into the paper take-up spool, be sure that the paper is aligned with the spool's flange so that the paper is taken up by the spool.
- Cut redundant paper by the cutter.
- Open the printer's cover, turn the knob five or six times in the direction of the arrow, insert the ink ribbon, and push the ribbon cassette down until it clicks.



## Set Print Mode(DIP Switch)

Set print mode by the DIP Switch, such as Black mark, Cutter, Language, Beep, Density, Speed mode...



Interface	DIP-8	Function		ON	OFF
	SW-1	Black mark		Yes	No
	SW-2	Auto cutter		Yes	No
	SW-3	Color switch		Yes	No
	SW-4	Character per line		42CPL/35CPL	40CPL/33CPL
	SW-5	Unidirection or Bidirection print		Unidirection	Bidirection
	SW-6	Two-byte character code		International mode	Kanji mode
Serial	SW-7	ON	OFF	ON	OFF
	SW-8	ON	ON	OFF	OFF
	Baud rate	38400	4800	9600	19200

## Print self-test page

Self-test page can be showed the printer itself information including software version, interface type, DIP setting ect, for inspecting the printer if work normally or not.

To start the printer self-test, please follow the below steps:

1. Turn off the printer power.
2. Make sure the paper roll is installed correctly and the printer top cover is closed.
3. Press and hold on the FEED button and turning on the printer power simultaneously, hold on the FEED button till hearing a beep, then release the FEED button, self-test page prints out.

The printer will print the content as below after test-self done.

**\*\* Completed \*\***

## Driver Installation (WinXP in 32bit systems as an example)

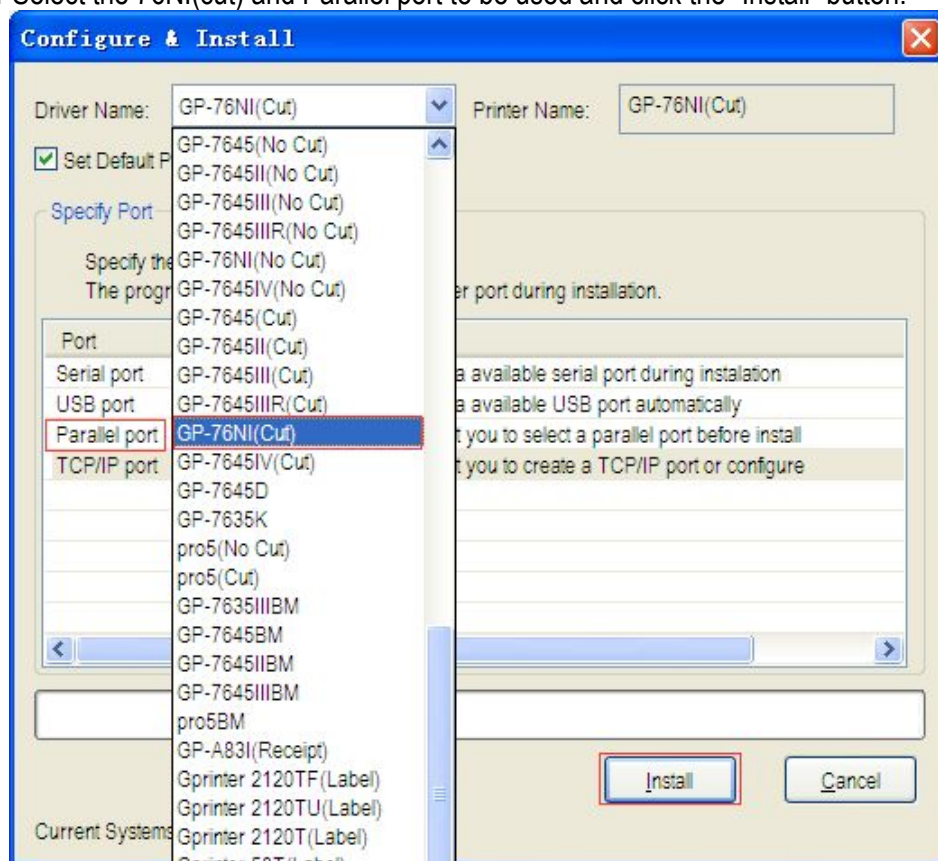
- a. Insert the bundled CD disk into the CD-ROM drive, in the CD-ROM menu, double-click the Windows driver Installation file (Driver\_Install\_Receipt\_Label\_GBEN.exe) to begin driver installation.



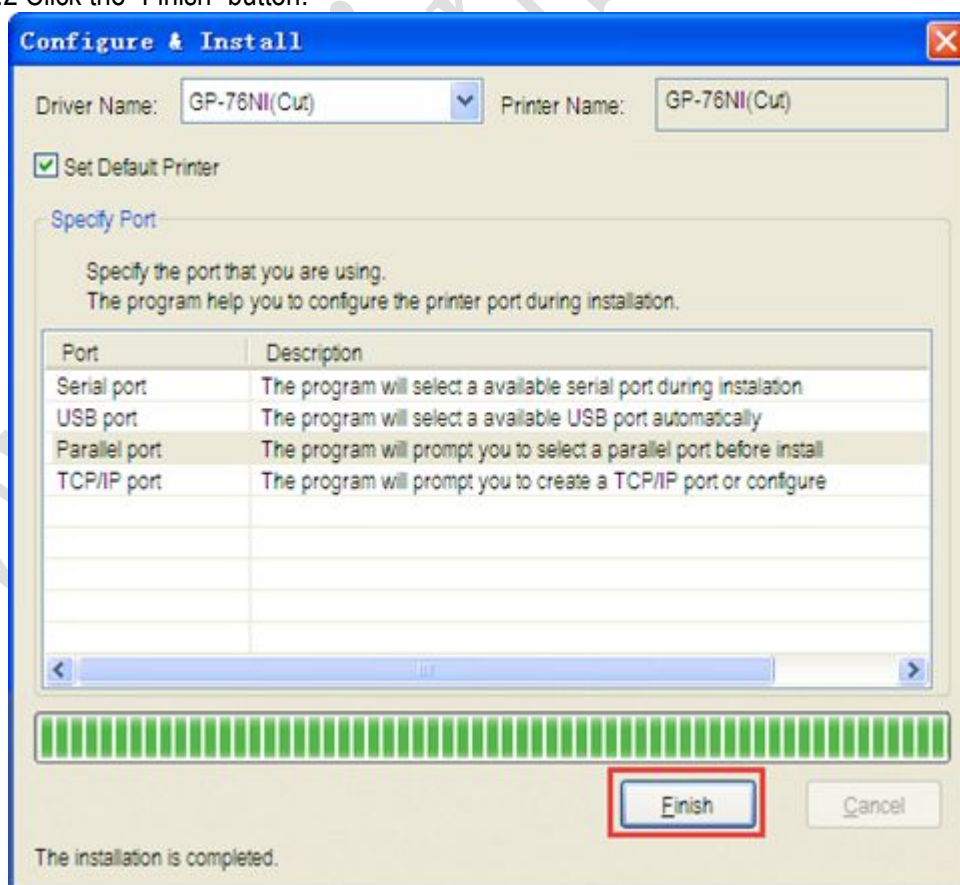
- b. Select the current printer model and port type to be used and click the "Install" button. To know about the printer model and port type, please refer to the product information which labeling at the bottom of the printer. **NOTE: Take 76NI with auto cutter for example, other models are similar.**

**1. If using Parallel port, please install the driver as the following steps:**

1.1 Select the 76NI(cut) and Parallel port to be used and click the "Install" button.



1.2 Click the "Finish" button.

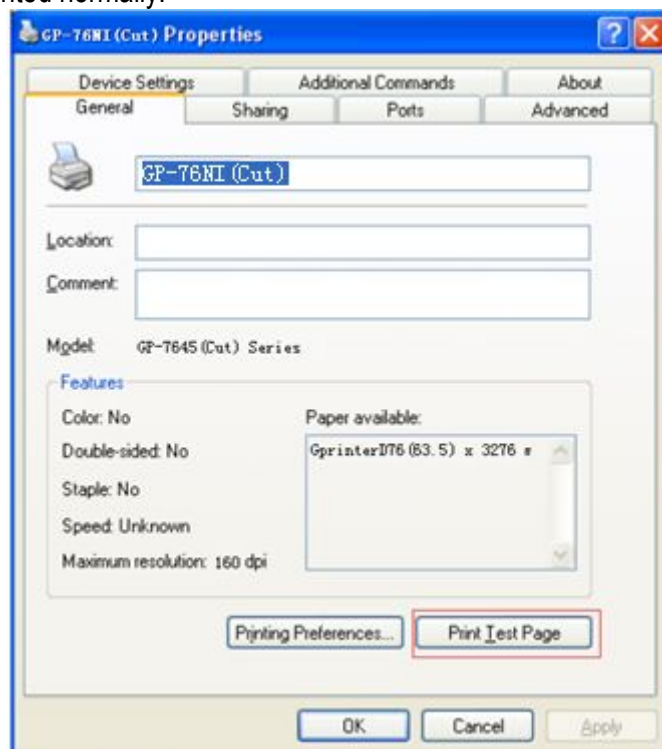


1.3 Driver installation finished, Click **【start】** - **【device and printer】** , driver of 76NI(cut) showed as below:



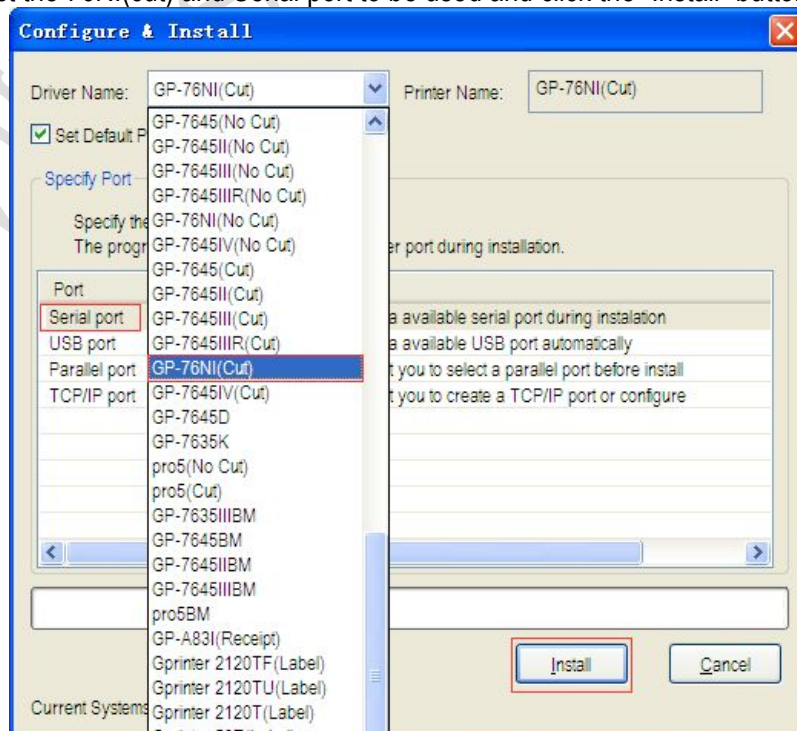


1.4 The Parallel Port setting can be confirmed in the Windows Driver properties. Click the "Print Test Page" button and check printing status. Proper installation of the driver is indicated if the test page is printed normally.

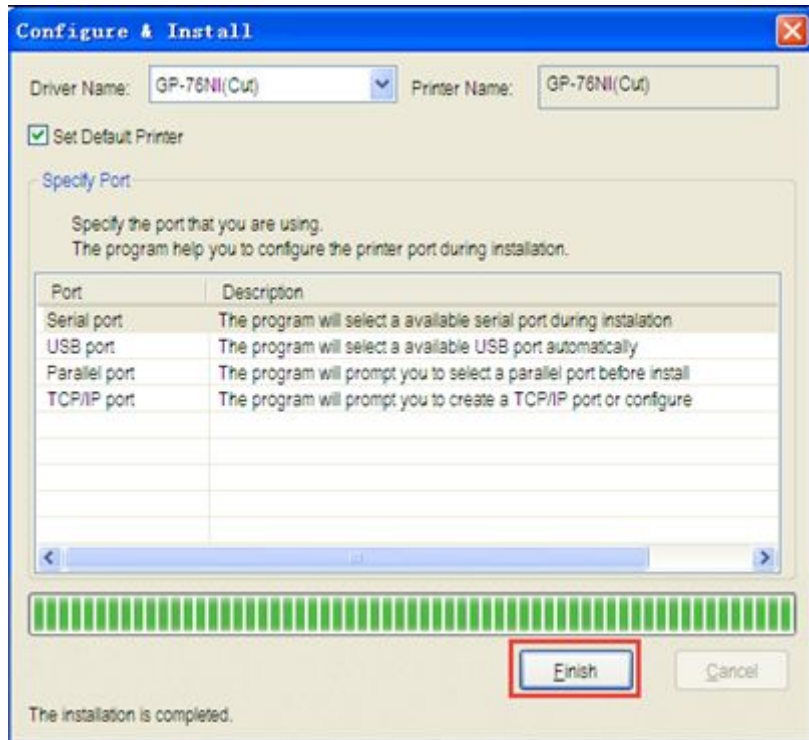


2. If using Serial port, please install the driver as the following steps:

2.1 Select the 76NI(cut) and Serial port to be used and click the "Install" button.



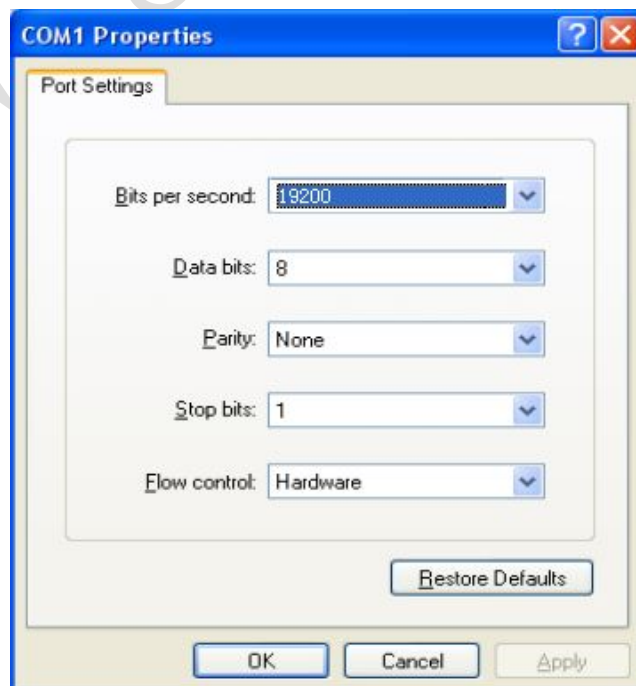
2.2 Click the “Finish” button.



2.3 Driver installation finished, Click 【start】 - 【device and printer】 , driver of 76NI(cut) showed as bellow:

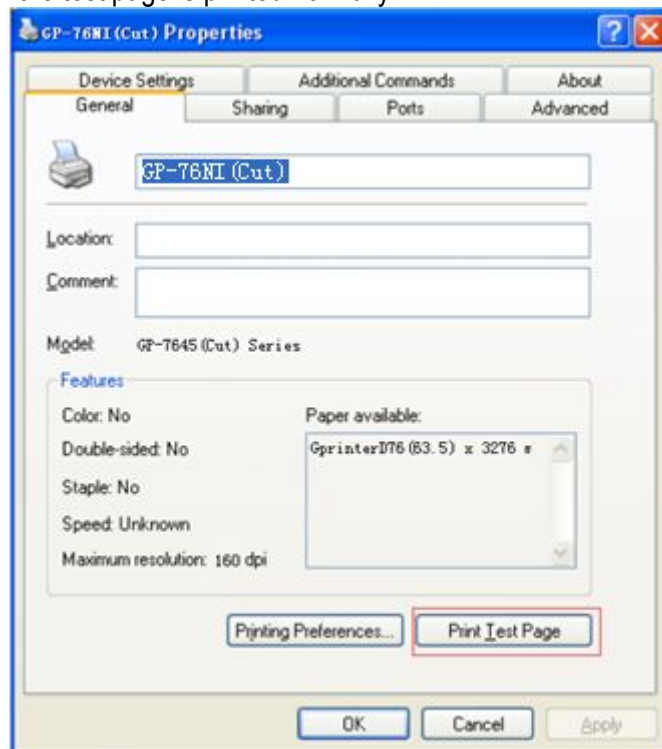


2.4 The Serial Port setting can be confirmed in the Windows Driver properties. Click the “Port Settings” button in the “Ports” tab. Match the communication settings to those of the printer.(The communication settings of the printer can be performed by conducting a self-test page.)



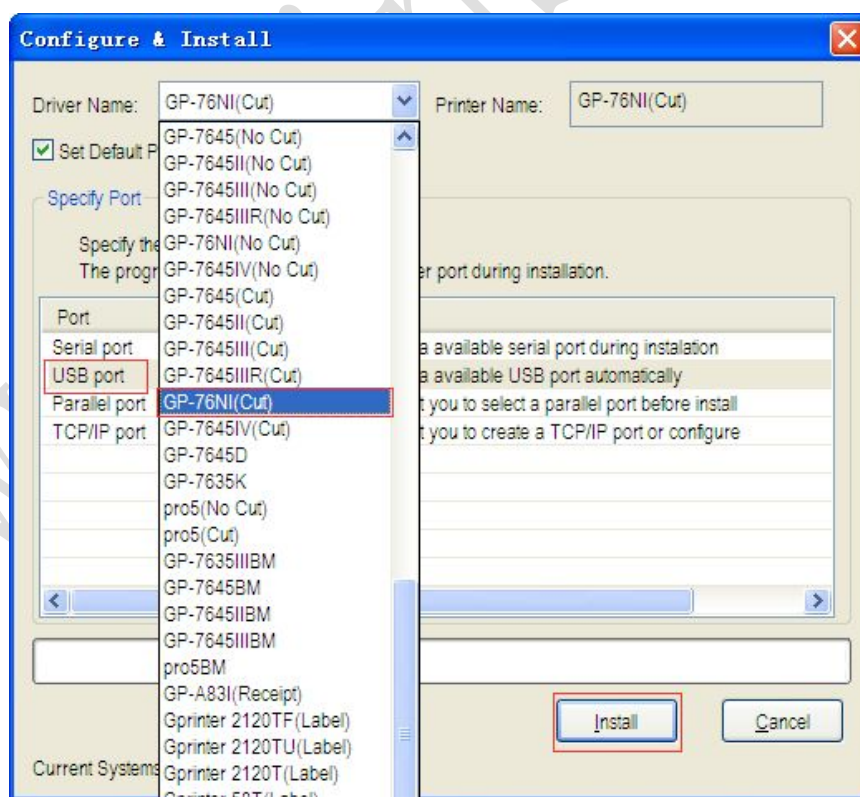


2.5 Click the “Print Test Page” button and check printing status. Proper installation of the driver is indicated if the test page is printed normally.

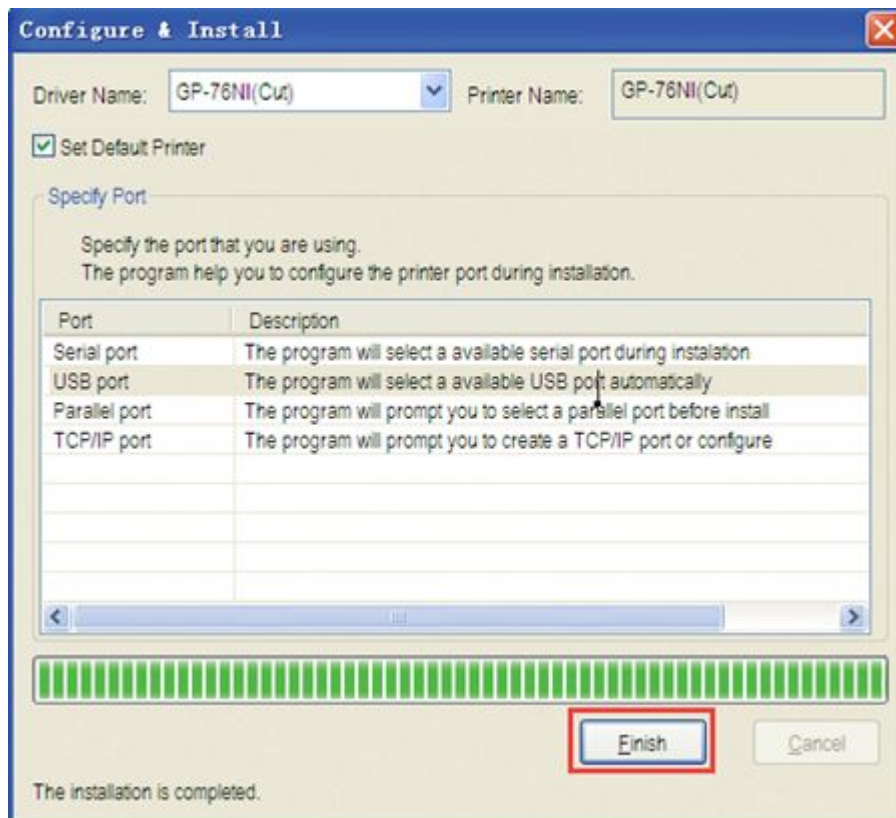


**3. If using USB port, please install the driver as the following steps:**

3.1 Select the 76NI(cut) and USB port to be used and click the “Install” button.



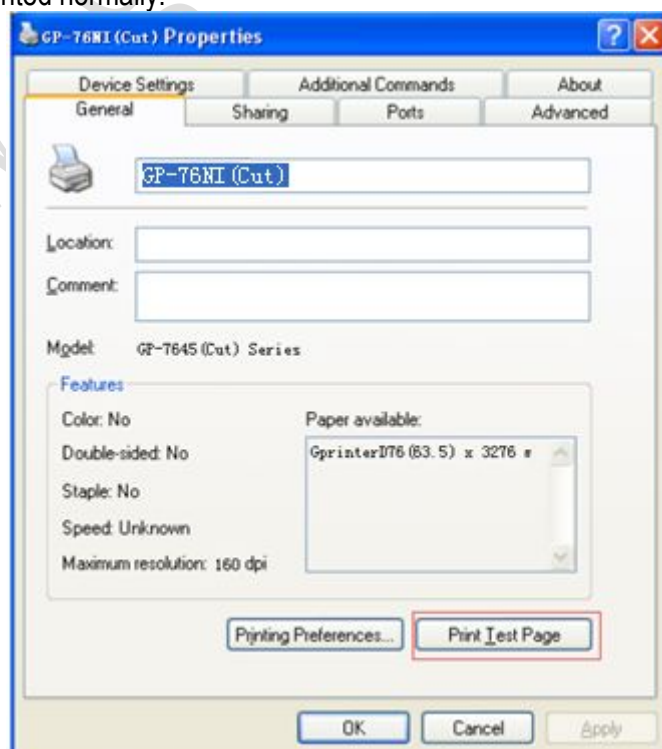
3.2 Click the “Finish” button.



3.3 Driver installation finished, Click **【start】** - **【device and printer】** , driver of 76NI(cut) showed as bellow:

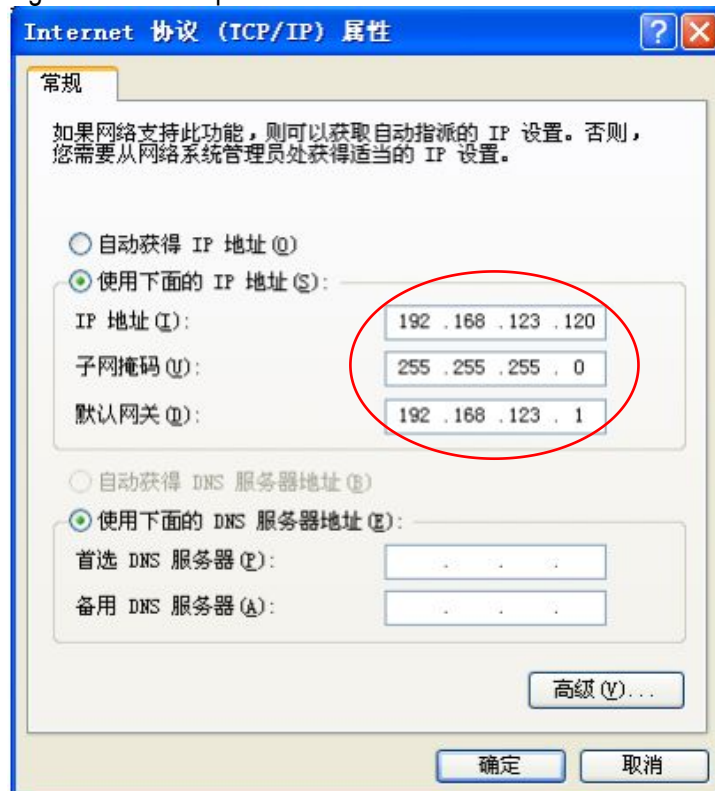


3.4 The USB Port setting can be confirmed in the Windows Driver properties. Click the "Print Test Page" button and check printing status. Proper installation of the driver is indicated if the test page is printed normally.



#### 4. If using Ethernet port, please install the driver as the following steps:

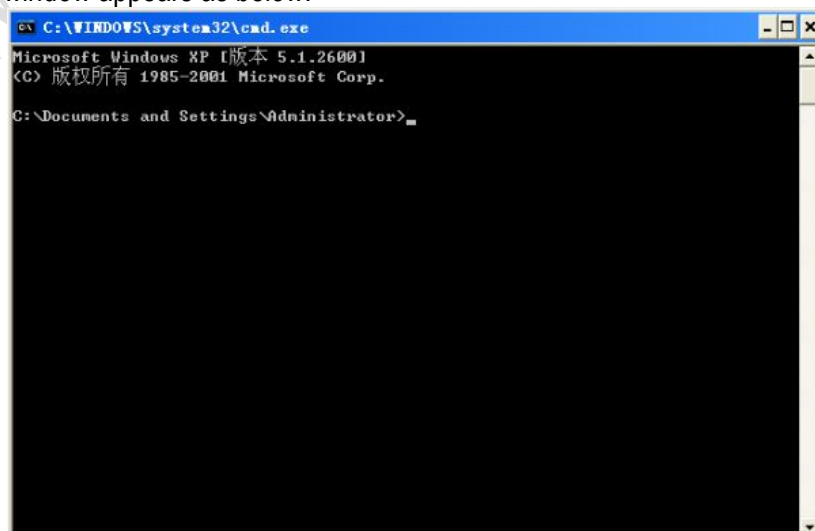
4.1 Printer default IP address is 192.168.123.100, firstly change the computer IP address to 192.168.123.120 as below, in order to keep on the same network segment with printer. Then Computer can not go online at the present.



4.2 press window+R button, input cmd

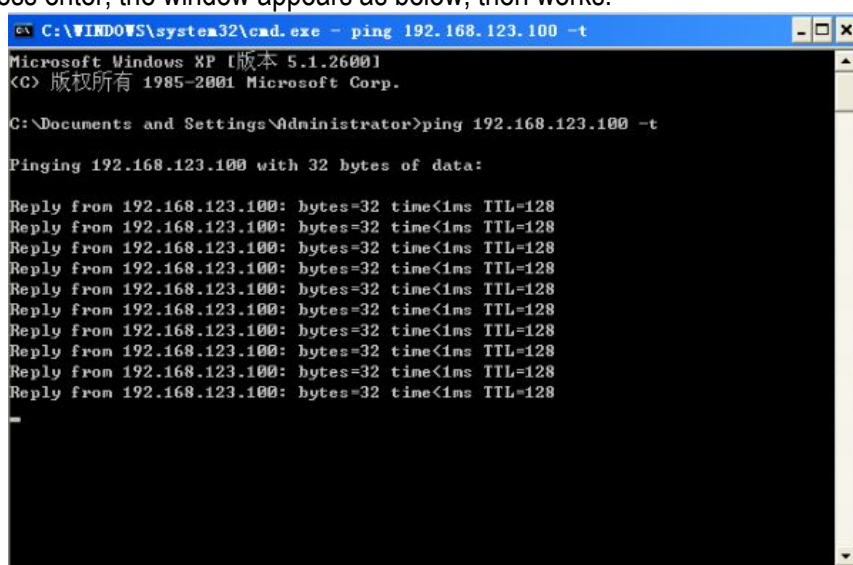


4.3 The window appears as below:



4.4 Then input **ping 192.168.123.100 -t** to check if the printer IP address is able to ping to computer or not.

Press enter, the window appears as below, then works.



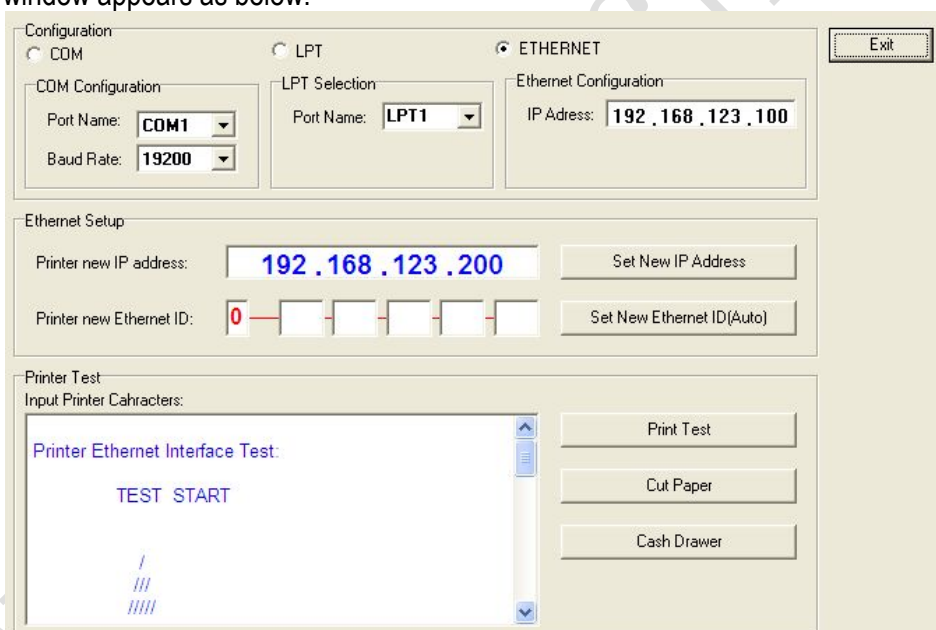
```
C:\WINDOWS\system32\cmd.exe - ping 192.168.123.100 -t
Microsoft Windows XP [版本 5.1.2600]
(C) 版权所有 1985-2001 Microsoft Corp.

C:\Documents and Settings\Administrator>ping 192.168.123.100 -t

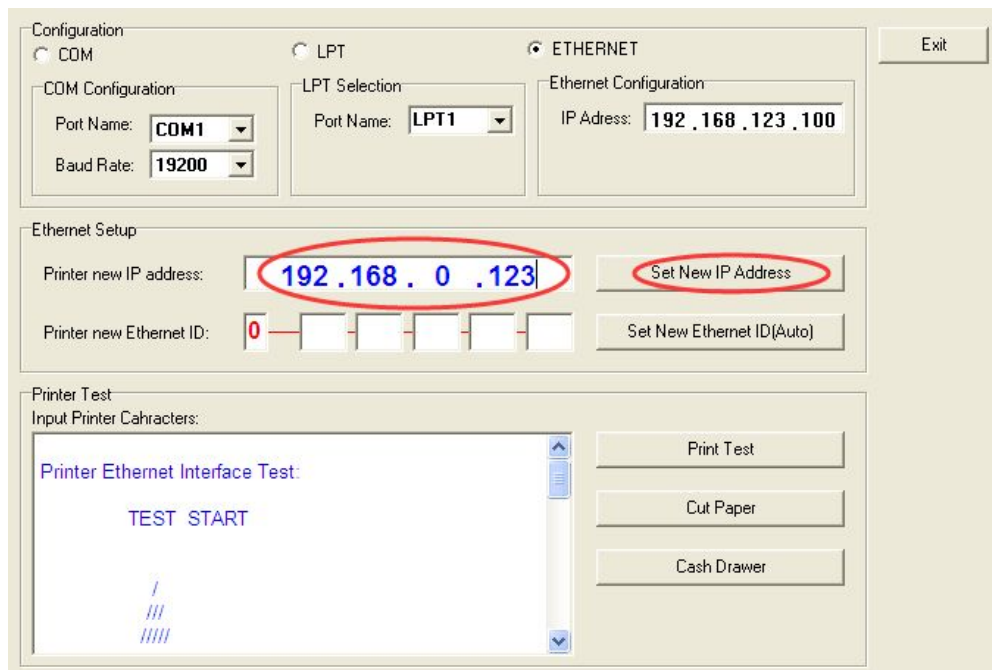
Pinging 192.168.123.100 with 32 bytes of data:

Reply from 192.168.123.100: bytes=32 time<1ms TTL=128
Reply from 192.168.123.100: bytes=32 time<1ms TTL=128
Reply from 192.168.123.100: bytes=32 time<1ms TTL=128
Reply from 192.168.123.100: bytes=32 time<1ms TTL=128
Reply from 192.168.123.100: bytes=32 time<1ms TTL=128
Reply from 192.168.123.100: bytes=32 time<1ms TTL=128
Reply from 192.168.123.100: bytes=32 time<1ms TTL=128
Reply from 192.168.123.100: bytes=32 time<1ms TTL=128
Reply from 192.168.123.100: bytes=32 time<1ms TTL=128
```

4.5 Change the printer IP address using tools. Install **GPETHERNETnew.exe**, and then run it. The window appears as below:



4.6 Change printer new IP address to 192.168. 0.XXX, and then click “set new IP Address”. Please be noted that you can set any IP under 192.168.0.XXX but avoid conflict to any current computer IP.

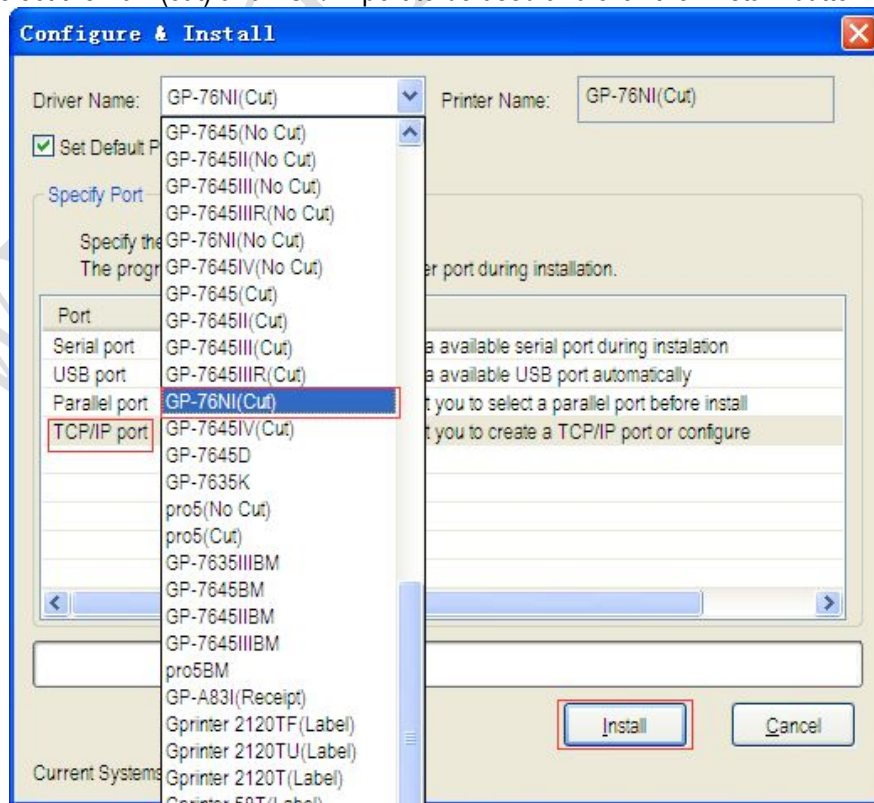


4.7 Change the computer IP address to original IP, the computer can go online now.

4.8 Double-click the Windows driver Installation file (Driver\_Install\_Receipt\_Label\_GBEN.exe) to begin driver installation.

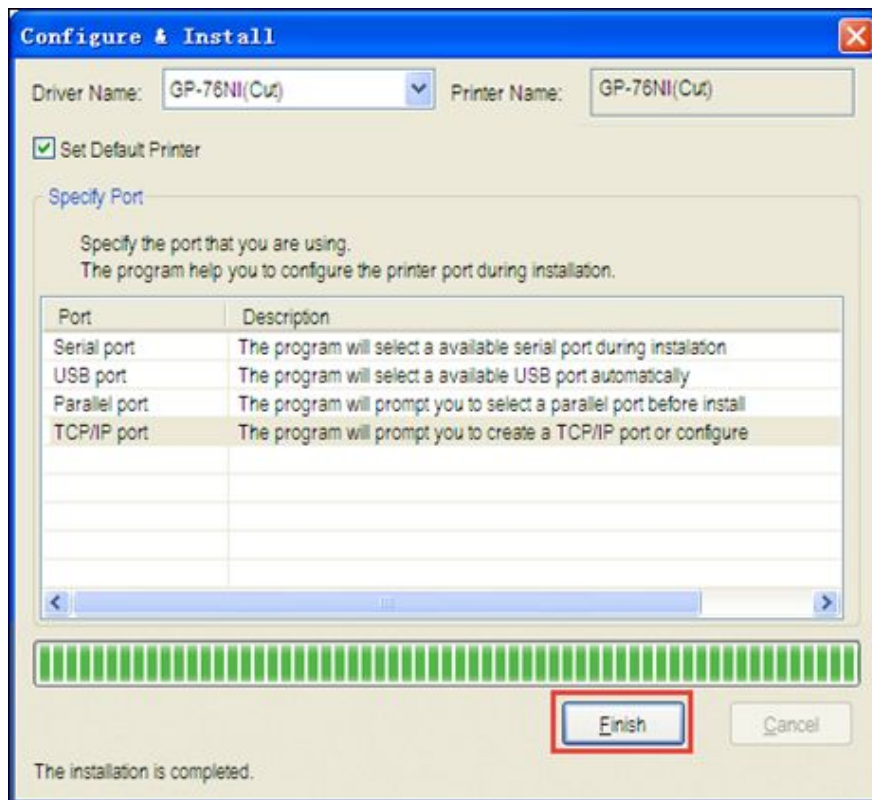


4.9 Select the 76NI(cut) and TCP/IP port to be used and click the "Install" button.



4.10 Click the "Finish" button.





4.11 Driver installation finished, Click **【start】** - **【device and printer】**, driver of 76NI(cut) showed as bellow:



4.12 The Ethernet Port setting can be confirmed in the Windows Driver properties. Click the "Print Test Page" button and check printing status. Proper installation of the driver is indicated if the test page is printed normally.

