

ZOTAC ZBOX

User's Manual



No part of this manual, including the products and software described in it, may be reproduced, transmitted, transcribed, stored in a retrieval system, or translated into any language in any form or by any means, except documentation kept by the purchaser for backup purposes, without the express written permission of ZOTAC.

Products and corporate names mentioned in this manual may not be registered trademarks or copyrights of their respective companies, and are used for identification purposes only. All trademarks are the property of their respective owners.

Every effort has been made to ensure that the contents of this manual are correct and up to date. However, the manufacturer makes no guarantee regarding the accuracy of its contents, and reserves the right to make changes without prior notice.

CAUTION:

Risk of explosion if the battery is replaced with an incorrect type. Batteries should be recycled where possible. Disposal of used batteries must be in accordance with local environmental regulations.

Table of Contents

Product Specifications	3
Safety information	4
Setting up your system	4
Care during use	4
Welcome	5
Package contents	5
Getting to know your ZOTAC ZBOX	6
Front view	6
Rear view	7
Installing Hardware inside ZOTAC ZBOX	8
Installing a memory module	8
Removing the memory module	9
Installing a hard disk	10
Removing a hard disk	11
Positioning your ZOTAC ZBOX	12
Installing the stand	12
Installing your ZOTAC ZBOX to a monitor	12
Setting up your ZOTAC ZBOX	13
Installing drivers and software	14
Installing an operating system	14
Installing system drivers	14
Using your ZOTAC ZBOX	15
Configuring wireless connection	15
Configuring wired connection	15
Using a static IP	15
Using a dynamic IP (PPPoE connection)	16

Product Specifications

❑ Chipset

- ❖ Intel® NM10 Express Family Chipset

❑ Product Size

- ❖ 188mm x 188mm x 44mm

❑ Microprocessor support

- ❖ Integrated with Intel® Atom™ processor D4/D5 series featuring an integrated graphics core (Intel® GMA 3xxx) with graphics performance improvements

❑ Operating systems:

- ❖ Supports Windows XP 32 bit/64 bit, Windows Vista 32 bit/64 bit and Windows 7 32bit/64bit

❑ System Memory support

- ❖ Supports two 204-pin SO-DIMM DDR3-800
- ❖ Up to 4 GB of memory

❑ USB 2.0 Ports

- ❖ Supports hot plug and play
- ❖ Six USB 2.0 ports (two front panel ports, four rear panel ports)
- ❖ Supports USB 2.0 protocol up to 480 Mbps transmission rate

❑ Onboard Serial ATA

- ❖ Independent DMA operation on one port, data transfer rates of 3 Gb/s
- ❖ Support one ESATA port
- ❖ Support one 2.5 inch SATA HDD or SSD

❑ Onboard LAN (RTL8111 series)

- ❖ Supports 10/100/1000 Mbps operation
- ❖ Supports IEEE 802.3

❑ WiFi support (Optional)

- ❖ Compliant with IEEE802.11n Draft 2.0 standard
- ❖ High speed wireless connection and enhanced wireless security

❑ Onboard Audio

- ❖ 8-channel Digital Audio/Stereo Analog Audio
- ❖ Supports Jack-Sensing function

❑ Green Function

- ❖ Supports ACPI (Advanced Configuration and Power Interface)


❑ Onboard Graphics support

- ❖ Integrated with Intel® GMA 3xxx
- ❖ Direct X9 compliant Pixel Shader v2.0
- ❖ 3D Graphics Rendering Enhancements
- ❖ VGA and HDMI (720p) dual output support

Safety information

Your ZOTAC ZBOX is designed and tested to meet the latest standards of safety for information technology equipment. However, to ensure your safety, it is important that you read the following safety instructions.

Setting up your system

- ❖ Read and follow all instructions in the documentation before you operate your system.
 - ❖ Do not use this product near water or a heat source such as a radiator.
 - ❖ Set up the system on a stable surface with the provided stand. Never use the system alone without the stand.
 - ❖ Openings on the chassis are for ventilation. Do not block or cover these openings. Make sure you leave plenty of space around the system for ventilation. Never insert objects of any kind into the ventilation openings.
 - ❖ Use this product in environments with ambient temperatures between 0°C and 35°C.
-  If you use an extension cord, please use the UL listed cord and make sure that the total ampere rating of the devices plugged into the extension cord does not exceed its ampere rating.

Care during use

- ❖ Do not walk on the power cord or allow anything to rest on it.
- ❖ Do not spill water or any other liquids on your system.
- ❖ Please do not install onto display with exceed 7kg weight totally. A drop or fall could cause injury.
- ❖ When the system is turned off, a small amount of electrical current still flows. Always unplug all power, modem, and network cables from the power outlets before cleaning the system.
- ❖ If you encounter the following technical problems with the product, unplug the power cord and contact a qualified service technician or your retailer.
 - The power cord or plug is damaged.
 - Liquid has been spilled into the system.
 - The system does not function properly even if you follow the operating instructions.
 - The system was dropped or the cabinet is damaged.
 - The system performance changes.

Welcome

Congratulations on your purchase of the ZOTAC ZBOX. The following illustration displays the package contents of your new ZOTAC ZBOX. If any of the below items is damaged or missed, contact your retailer.

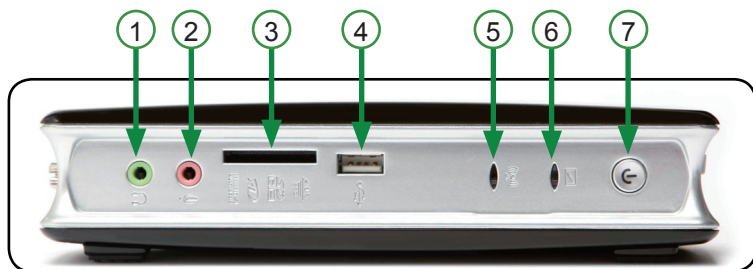
Package contents

- 1 x ZOTAC ZBOX
- 1 x Stand
- 1 x VESA mount
- 1 x AC Adapter
- 1 x Power Cord
- 1 x User's Manual
- 1 x Support CD



Getting to know your ZOTAC ZBOX

Front view



Refer to the diagram below to identify the components on this side of the system

1. Headphone/Audio Out jack

The stereo headphone jack (3.5mm) is used to connect the system's audio out signal to amplified speakers or headphones.

2. Microphone jack

The microphone jack is designed to connect the microphone used for video conferencing, voice narrations or simple audio recordings.

3. Memory card slot

The built-in memory card reader reads MMC/SD/SDHC/MS/MS Pro/XD cards used in devices like digital cameras, MP3 players, mobile phones and PDAs.

4. USB port

The USB (Universal Serial Bus) port is compatible with USB devices such as keyboards, mouse devices, cameras and hard disk drives. USB allows many devices to run simultaneously on a single computer, with some peripheral acting as additional plug-in sites or hubs.

5. WiFi LED

The WiFi LED blinks when data is being transferred over WiFi.

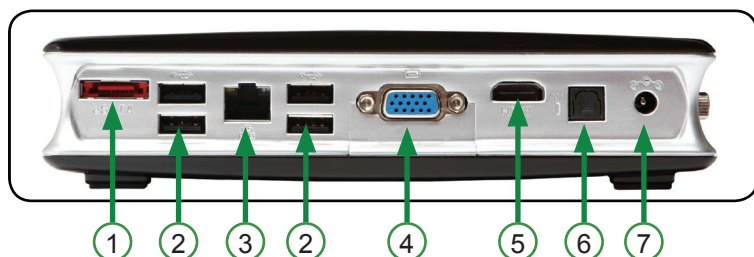
6. Hard disk LED

The hard disk LED blinks when data is being written into or read from the hard disk drive.

7. Power switch

The power switch allows powering ON and OFF the system

Rear view



Refer to the diagram below to identify the components on this side of the system.

1. eSATA port

The external SATA port is compatible with e.SATA devices such as external hard drives and Blu-ray drives.

2. USB ports

The USB (Universal Serial Bus) ports are compatible with USB devices such as keyboards, mouse devices, cameras and hard disk drives. USB allows many devices to run simultaneously on a single computer, with some peripheral acting as additional plug-in sites or hubs.

☞ **The two USB ports beside eSATA port do not support wake up function.**

3. LAN port

The eight-pin RJ-45 LAN port supports standard Ethernet cable for connection to a local network.

4. VGA port

The VGA port supports connection to analog monitors and displays.

5. HDMI port

The HDMI (High Definition Multimedia Interface) port supports a Full-HD device such as an LCD TV or monitor to allow viewing on a larger external display. (Resolution: 720p)

6. Optical (S/PDIF OUT) jack

Plug an optical cable into this jack for digital audio transfer.

7. Power input (DC19V)

The supplied power adapter converts AC power to DC power for use with this jack. Power supplied through this jack supplies power to the PC. To prevent damage to the PC, always use the supplied power adapter.

☞ The power adapter may become warm to hot when in use. Do not cover the adapter and keep it away from your body.

Installing Hardware inside ZOTAC ZBOX

Before installing hardware, please follow the instructions below to remove the cover of your ZOTAC ZBOX.

1. Unscrew.

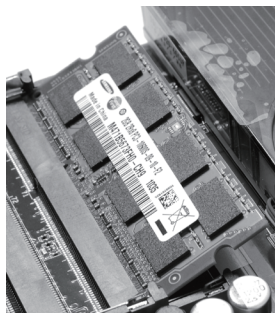


2. Gently remove the cover as the image below.

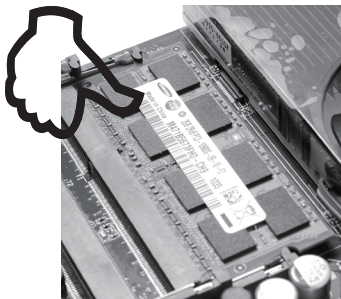


Installing a memory module

1. Insert the memory module into the socket at a 45 degree angle.



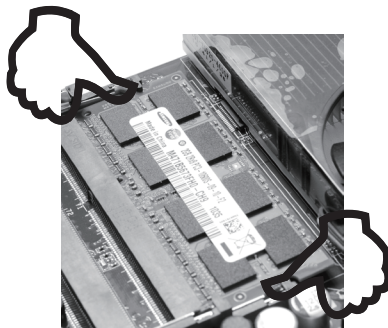
2. Gently press down on the memory module until it is locked by the arms of the socket.



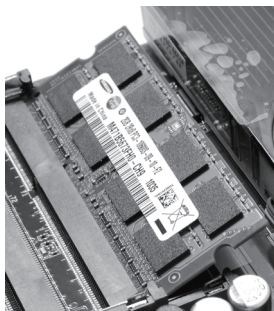
☞ This ZOTAC ZBOX accommodates two SO-DIMM DDRIII memory modules. You must install at least one module in any of the two slots.

Removing the memory module

1. Remove the cover of your ZOTAC ZBOX.
2. Gently press the two arms securing the memory in the socket as shown in the image below to release the memory module.

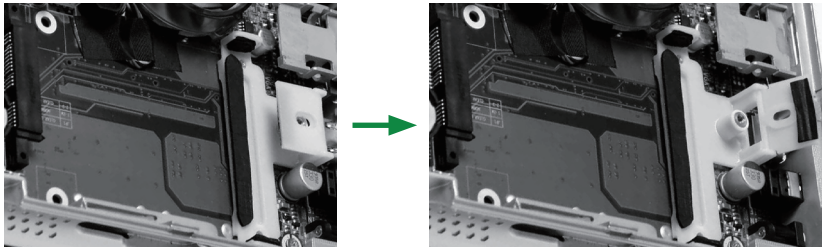


3. The memory module can be easily taken out.

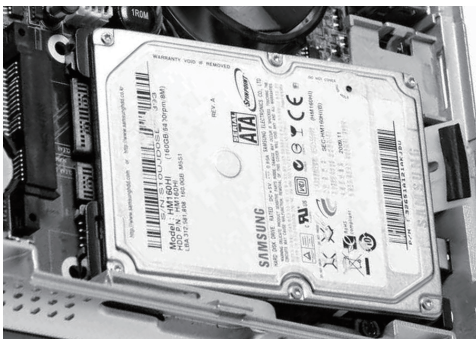


Installing a hard disk

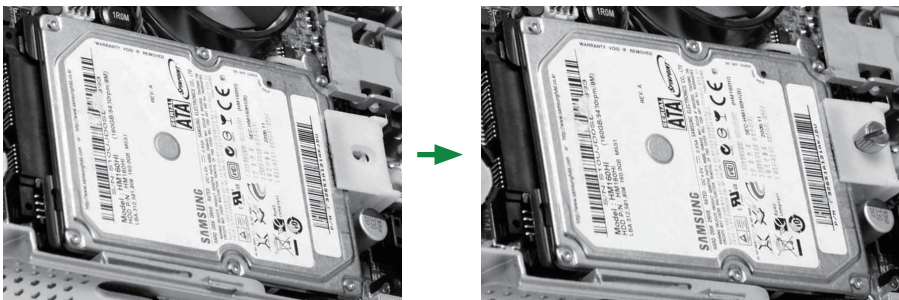
1. Remove the cover of your ZOTAC ZBOX.
2. Unscrew and remove the screw from the hard disk bracket, and raise the lid as shown in the image below.



3. Insert the hard disk into the socket at a 45 degree angle.

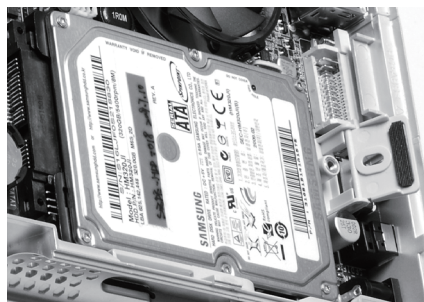
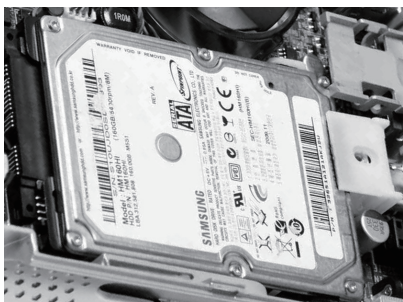


4. Gently press down on the hard disk until it is seated, shut and screw the lid.

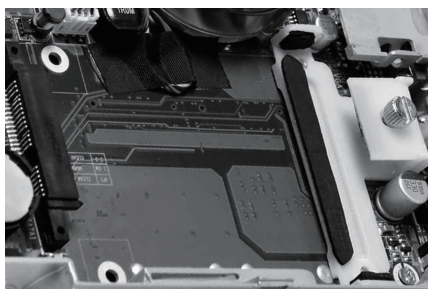
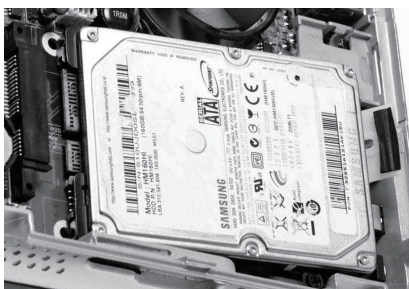


Removing a hard disk

1. Remove the cover of your ZOTAC ZBOX.
2. Unscrew and remove the screw from the hard disk bracket, and raise the lid as shown in the image below.



3. Gently remove the hard disk from the socket, close and screw the lid.



Positioning your ZOTAC ZBOX

- ☞ Do not position the ZOTAC ZBOX where the ventilation holes are covered. To guarantee proper use, leave 4 inches (10 cm) spacing in front of the ventilation holes.
- ☞ ZOTAC mini-PC system provide ample connectivities in tiny space, please choose connectors and cables in appropriate size to avoid interference.

Installing the stand

Erect your ZOTAC ZBOX with the supplied stand. To do so :

1. Locate the screw hole on the bottom of the ZOTAC ZBOX.
 2. Align the stand screw to the PC screw hole and then secure the Stand to the PC with a coin.
- ☞ Do not place your ZOTAC ZBOX on the desktop without the stand.



Installing your ZOTAC ZBOX to a monitor

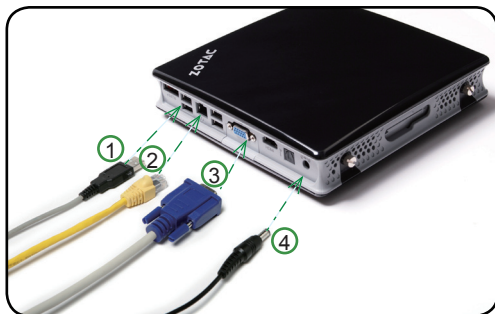
You can also install your ZOTAC ZBOX to the back of a monitor. To do so:

1. Secure the VESA mount to your monitor with four screws (HNM/M4x8).
 2. Place your ZOTAC ZBOX on the VESA mount noting the correct alignment and then secure the PC to the VESA mount with a coin.
- ☞ To fasten the VESA mount, your monitor must comply with VESA75 Or VESA100 standard.
 - ☞ Mechanical Loading Stability -- Mounting of the equipment on the backside of the monitor should be lay this equipment on a reliable surface when install. A drop or fall could cause injury.



Setting up your ZOTAC ZBOX

You need to connect peripherals before using your ZOTAC ZBOX.



1. Connecting to USB devices

Connect USB devices like wired/wireless keyboards (varying with areas), mouse devices and printers to the USB ports on the system rear panel.

2. Connecting to a network device

Connect one end of a network cable to the LAN port on the system rear panel and the other End to a hub or switch.

3. Connecting to a display

Connect one end of the supplied VGA cable to an LCD TV or an LCD monitor, and the other end to the VGA port on the system rear panel.

4. Turning on the system

Connect the supplied AC adapter to the DC IN jack on the system rear panel and then press the power switch on the front panel to turn on the system.

☞ When your ZOTAC ZBOX is not in use, unplug the power adapter or switch off the AC outlet to save on power consumption.

Installing drivers and software

Installing an operating system

The ZOTAC ZBOX does not ship with an operating system preinstalled. The user must install the operating system before the ZOTAC ZBOX can be used. The following operating systems are supported:

- Windows XP
- Windows Vista
- Windows 7

Follow the instructions below to install an operating system:

1. Attach external CD/DVD drive via USB or eSATA
2. Insert disk for operating system (Windows or Linux).
3. Wait for the ZOTAC ZBOX to boot from the disk.
4. Follow the onscreen directions to install the operating system.
5. Install system drivers to gain full functionality of the ZOTAC ZBOX hardware and features.

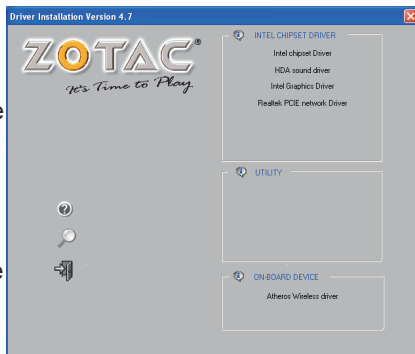
Installing system drivers

Before you can use the full features of the ZOTAC ZBOX, the system drivers must be installed. The following types of operating systems are supported by the ZOTAC ZBOX driver CD:

- Windows XP
- Windows Vista
- Windows 7

Follow the instructions below to install the system drivers:

1. Insert the ZOTAC ZBOX driver CD. If autorun is enabled, the driver installation main menu will show up automatically. If autorun is disabled, you may click the file *install.exe* to bring up the driver installation main menu. Windows Vista may ask for further confirmation, please click "Allow" or "OK" to proceed.
2. The following drivers are available on the CD:
 - Intel chipset Driver
 - HDA sound driver
 - Intel Graphics Driver
 - Realtek PCIE network Driver



- Atheros Wireless driver

- Each driver must be installed individually to ensure proper operation of the ZOTAC ZBOX.
3. Select the driver you want to install. The driver installer should launch.
 4. Follow the onscreen instructions to install the drivers.
 5. Restart the system.

Using your ZOTAC ZBOX

Configuring wireless connection

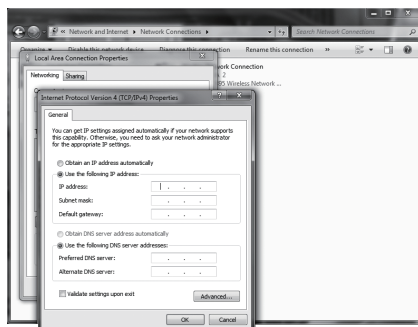
To connect to a wireless network, follow the instructions below:

1. Double-click the crossed wireless network icon (pic) on the notification area.
 2. Select the wireless network you want to connect to from the list and click Connect.
 3. After connection was established, you will see Connected.
- For security concerns, Do NOT connect to an unsecured network, otherwise, the transmitted information without encryption might be visible to others.
 - Enter the network security key if necessary.



Configuring wired connection Using a static IP

1. Right-click the network icon on the notification area and select Open Network Connections.
2. Right-click Local Area Connection and select Properties.
3. Highlight Internet protocol (TCP/IP) and click Properties.
4. Select Use the following IP address.
5. Enter your IP address, subnet mask and Default gateway.
6. If needed, enter the preferred DNS server address.
7. After entering all of the related values, click OK to finish the configuration.



Using a dynamic IP (PPPoE connection)

1. Repeat Step 1-3 in the previous section.
 2. Select Obtain an IP address automatically and click OK.
 3. Click Create a new connection to start the NEW Connection Wizard.
 4. Click Next.
 5. Select Connect to the Internet and click Next.
 6. Select Set up my connection manually.
 7. Select your connection type and click Next.
 8. Enter your ISP Name and click Next.
 9. Enter your User name and Password. Click Next.
 10. Click Finish to finish the configuration.
 11. Enter your user name and password. Click Connect to connect to the internet.
- ☞ Contact your internet Service Provider (ISP) if you have problems connecting to the network.

