

Keysight Technologies

BenchVue Software v3.0 (BV00000A)

Data capture simplified. Click. Capture. Done.

Data Sheet



## Simplified Measurement Viewing, Control and Capture

Keysight BenchVue software for the PC reinvents your bench testing by making it simple to connect and record results with your instruments with no programming. You will derive answers faster than ever by easily viewing, logging and exporting measurement data and screen images with a few clicks from a single environment.

Use BenchVue to:

- Visualize multiple measurements simultaneously
- Easily log data, screen images and system state
- Recall past state of your bench to replicate results

Save time with:

- Fast measurement data export in desired formats
- Rapidly prototype custom test sequences
- Quickly access manuals, drivers, FAQs and videos

From anywhere:

- Monitor and control your bench from mobile devices

## Measurement Viewing



See your measurements across instruments in one place to quickly correlate measurement activities and obtain actionable insight.



Depending on your measurement task, BenchVue provides extensive data, trace and measurement logging capabilities all from within one piece of software.

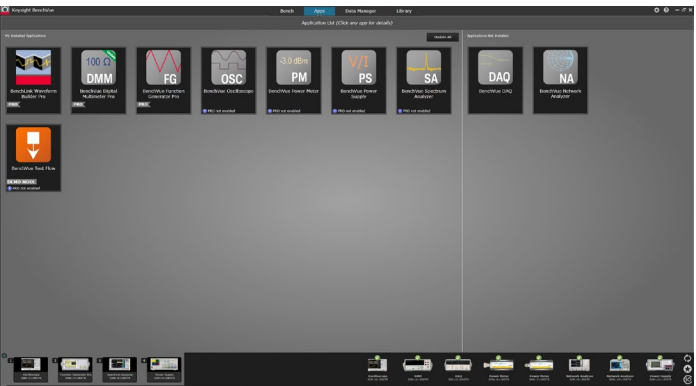
## Plug and Play Instrument Control

Connecting and controlling an instrument to BenchVue is as simple as plugging it in and launching the BenchVue instrument application. No programming or separate instrument drivers required.



## Integrated Applications

BenchVue consists of different applications tailored to streamline your measurement tasks and are included in every no cost download of BenchVue (BV0000A).



## BenchVue Capabilities and Available Apps

BenchVue provides a wide array of capabilities depending on the instrument application within BenchVue being used. These capabilities will automatically vary based on the functionality of the instrument types and models connected to your PC running BenchVue software. Optional Pro version upgrades are available to extend BenchVue's functionality.

BenchVue app name	No cost version	Optional Pro upgrade
Test Flow	Included in BV0000A (demo mode only)	BV1001A
Digital Multimeter	Included in BV0000A	BV0001A
Function Generator	Included in BV0000A	BV0002A
Power Supply	Included in BV0000A	BV0003A
Oscilloscope	Included in BV0000A	BV0004A
Spectrum Analyzer	Included in BV0000A	BV0005A
Data Acquisition	Included in BV0000A	BV0006A
Power Meter	Included in BV0000A	BV0007A
Network Analyzer	Included in BV0000A	N/A



## BenchVue Test Flow App

Rapidly prototype automated tests in BenchVue

Enhance your workflow with the BenchVue Test Flow app by creating custom test procedures within BenchVue software. The intuitive drag-and-drop interface enables you to quickly create simple test procedures or sequences that used to require days using traditional programming languages. Obtain a deeper understanding of your data using the built-in analysis tools that log and graph the data with selectable x-axis and y-axis formats. The BenchVue Test Flow app is installed with the BenchVue platform software.

With BenchVue Test Flow you can:

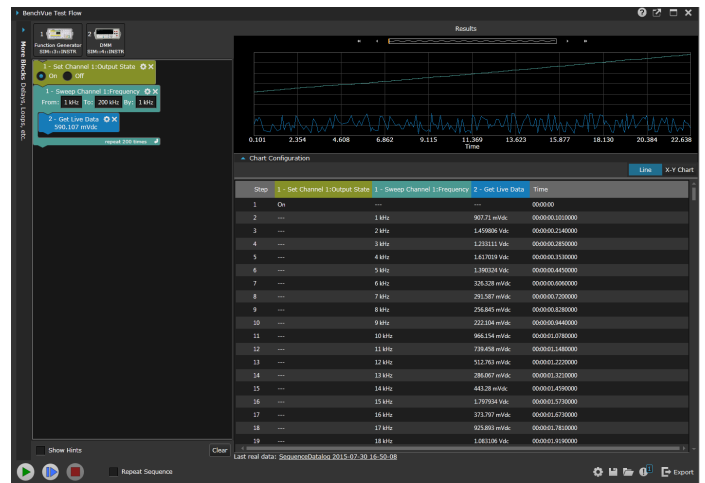
- Create custom test sequences fast and intuitively
- Combine multiple instruments into a sequence for better DUT characterization
- Drag-and-drop controls and for rapid test prototyping

Interpret results more quickly by:

- Validating your sequence setup using the preview tool
- Customizing your graphs to view measurements with different X-axis and Y-axis information
- Viewing data logs in tabular form
- Exporting data to popular tools such as Microsoft Excel, Microsoft Word and MATLAB for documentation or further analysis



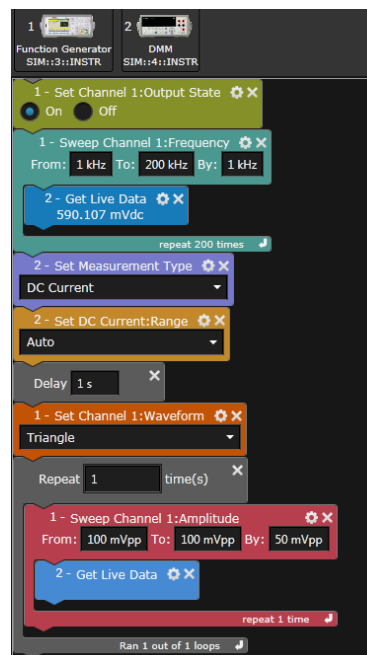
BenchVue Test Flow is integrated into the BenchVue framework and occupies the right-hand panel of the user interface.



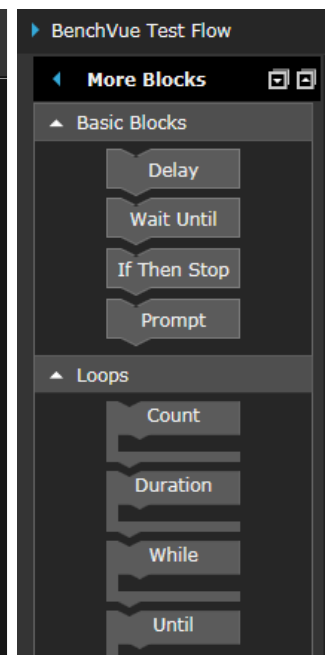
Visualize your Test Flow results in chart or tabular form.

## Use blocks to control your test workflow

Create your test procedures in BenchVue Test Flow by dragging and dropping blocks into a test sequence. This intuitive method of test design allows you to understand the order of operations within your test sequence. Simply use the instrument controls and measurements that are available from integrated instrument controls in the BenchVue apps. For added flexibility, several utility blocks are available in BenchVue Test Flow including step controls, loops, and the ability to run SCPI commands or external programs.



Arrange the BenchVue Test Flow blocks in sequence in the order you want to run them. Top to bottom.



Built-in blocks add flexibility for your test sequences.



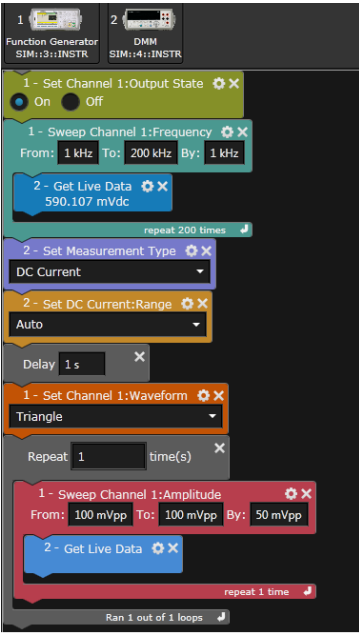
# BenchVue Test Flow App

Rapidly prototype automated tests with your BenchVue enabled instruments, log data, and analyze measurements.

## BenchVue Test Flow Instrument App Support

BenchVue Test Flow has support for four instrument applications in BenchVue. Pro and Basic versions of the instrument apps are supported. More instruments and capabilities are added regularly. Update your instrument apps via the apps tab in BenchVue to get the latest features.

App name	Optional Pro upgrade model number
Digital Multimeter	BV0001A
Function Generator	BV0002A
Power Supply	BV0003A
Oscilloscope	BV0004A



### Supported functionality

Sequence creation	<ul style="list-style-type: none"><li>- Unlimited blocks with simulated instruments (demo version)</li><li>- Unlimited blocks with live instruments (Pro licensed version)</li><li>- Start/step/stop sequence</li></ul>
Data visualization	<ul style="list-style-type: none"><li>- Line chart with mouse-over data points, pan</li><li>- X-Y chart with selectable X-axis and Y-axis formats</li><li>- Table</li></ul>
Measurement data log	<ul style="list-style-type: none"><li>- Unlimited measurement data logging</li></ul>
Export screen image	<ul style="list-style-type: none"><li>- Clipboard</li><li>- File (PNG/JPEG/BMP)</li></ul>
Export data	<ul style="list-style-type: none"><li>- MATLAB</li><li>- Microsoft Excel</li><li>- Microsoft Word</li><li>- CSV</li></ul>
Save and recall sequence	
Demo mode capabilities	Sequence creation with simulated instruments only.

### Licensed version capabilities

Unlimited sequence creation with live instruments. Yearly renewable license.

## Test Flow Application Support

App control/measurement blocks	
Test Flow app	Controls <ul style="list-style-type: none"> <li>– Basic blocks               <ul style="list-style-type: none"> <li>– Delay</li> <li>– Wait until</li> <li>– If then stop</li> <li>– Prompt</li> </ul> </li> <li>– Loops               <ul style="list-style-type: none"> <li>– Count</li> <li>– Duration</li> <li>– While</li> <li>– Until</li> </ul> </li> </ul>
	Advanced <ul style="list-style-type: none"> <li>– SCPI</li> <li>– External</li> </ul>
Digital Multimeter app	Controls <ul style="list-style-type: none"> <li>– Instrument settings</li> <li>– Measurement function and range selection</li> <li>– Integration time (NPLC/resolution)</li> <li>– Input impedance</li> <li>– Auto zero</li> <li>– Null state</li> <li>– App state</li> </ul>
	Measurements <ul style="list-style-type: none"> <li>– Measurement value</li> </ul>
Function Generator app	Controls <ul style="list-style-type: none"> <li>– Output control</li> <li>– Waveform selection</li> <li>– Instrument settings               <ul style="list-style-type: none"> <li>– Waveform: amplitude, offset, frequency, pulse width, edge timing, and phase</li> </ul> </li> <li>– App state</li> </ul>
Power Supply app	Controls <ul style="list-style-type: none"> <li>– Output control</li> <li>– Instrument settings</li> <li>– App state</li> </ul>
	Measurements <ul style="list-style-type: none"> <li>– Channel voltage</li> <li>– Channel current</li> </ul>
Oscilloscope app	Controls <ul style="list-style-type: none"> <li>– Default setup</li> <li>– Auto scale</li> <li>– Channel toggle</li> <li>– App state</li> </ul>
	Measurements <ul style="list-style-type: none"> <li>– Frequency</li> <li>– Rise/fall time</li> <li>– Min/max</li> <li>– Peak to peak</li> </ul>

100 Ω

DMM

BenchVue Digital Multimeter App



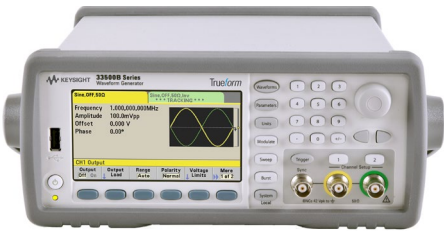
Control your digital multimeter to visualize measurements, perform data logging and annotate captured data.



Supported functionality	
Instrument settings	<div><div>– Measurement function and range selection</div><div>– Integration time (NPLC/resolution)</div><div>– Input impedance</div><div>– Auto zero</div><div>– Null state</div></div>
Data visualization	<div><div>– Chart with annotation, zoom in/out, auto scroll and markers</div><div>– Histogram (Pro version only)</div><div>– Table</div></div>
Measurement data log	<div><div>– Measurement data logging (1 hour duration)<div>– Unrestricted logging with Pro version</div></div><div>– Logger control</div><div>– Limit testing with alerts (Pro version only)</div></div>
Export screen image	<div><div>– Clipboard</div><div>– File (PNG/JPEG/BMP)</div></div>
Export data	<div><div>– MATLAB</div><div>– Microsoft Excel</div><div>– Microsoft Word</div><div>– CSV</div></div>
Save and recall instrument state	
Benchvue mobile support	
Supported models (10)	
34401A 34405A 34410A 34411A 34420A 34450A 34460A 34461A 34465A 34470A	
Pro version capabilities	
Upgrading to the Pro version (model # BV0001A) provides histograms, digitizer capability (34410A, 34411A, 34460A, 34461A, 34465A and 34470A) and unrestricted data logging with limit checking and alerts.	



# BenchVue Function Generator App



Control your function generator to set waveform properties and load custom arbitrary waveforms from files or drag-and-drop from an oscilloscope.



## Supported functionality

- Output control
- Waveform selection
  - Sine
  - Square
  - Ramp
  - Pulse
  - Arb
  - Triangle
  - Noise
  - PRBS (pseudo-random binary sequence)
  - DC

Instrument settings	<ul style="list-style-type: none"><li>- Waveform: amplitude, offset, frequency, and phase</li><li>- Mode select:<ul style="list-style-type: none"><li>- Modulation:<ul style="list-style-type: none"><li>-- Type: AM/FM/PM/FSK/BPSK/SUM</li><li>-- Source (INT/EXT/CH2)</li><li>-- Shape (Sin/Squ/Tri/Ramp/Nramp/Noise/PRBS/Arb)</li><li>-- DSSC (double sideband suppressed carrier)</li><li>-- Depth and AM frequency settings</li></ul></li><li>- Sweep:<ul style="list-style-type: none"><li>-- Type (linear/log)</li><li>-- Frequency set: start/center and stop/span</li><li>-- Time set: sweep, hold and return</li></ul></li><li>- Burst:<ul style="list-style-type: none"><li>-- N cycle mode/gated mode, start phase, number of cycles, and period</li></ul></li><li>- Output:<ul style="list-style-type: none"><li>- Mode (normal/gated), polarity (normal/inverted) and load (discrete/Hi-Z)</li></ul></li><li>- Trigger:<ul style="list-style-type: none"><li>- Source (IMM/ext/bus/timer), delay</li></ul></li><li>- Sync output<ul style="list-style-type: none"><li>- Enable (on/off), polarity (normal/inverted), source (Ch1/Ch2) and mode (normal/carrier)</li></ul></li></ul></li></ul>
Export instrument properties to Microsoft Word	
Save and recall instrument state	

Supported models (17)												
33210A	33220A	33250A	33521A	33522A	33509B	33510B	33511B	33512B	33519B	33520B	33521B	33522B
33611A	33612A	33621A	33622A									

Pro version capabilities	Upgrading to the Pro version (Model # BV0002A) provides advanced waveform creation capabilities by linking to Keysight Waveform Builder Pro Software from BenchVue.
--------------------------	---

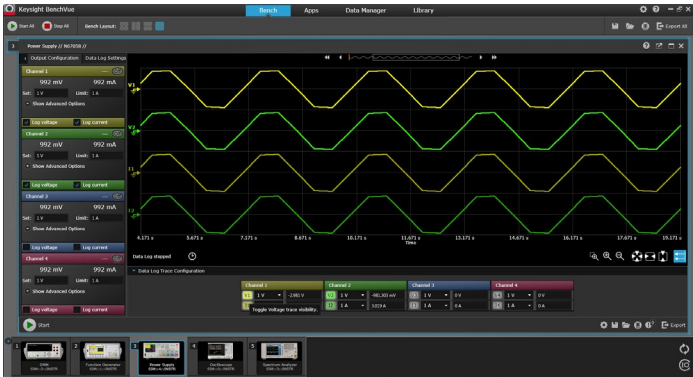




# BenchVue Power Supply App



Control your power supply to set parameters, visualize power output and data log changing voltage and current over time.



Supported functionality	
Output control	
Instrument settings	<div><div></div><div><div>– Set voltage output and range</div><div>– Set current limit, limit mode and range</div><div>– Enable/disable over voltage protection with limits</div></div></div>
Supply output data log	<div><div></div><div><div>– Output data logging (1 hour duration)<div>– Unrestricted logging with Pro version</div></div><div>– Logger controls</div><div>– Enable/disable voltage and current log</div><div>– Output status alerts (Pro version only)</div></div></div>
Export screen image	<div><div></div><div><div>– Clipboard</div><div>– File (PNG/JPEG/BMP)</div></div></div>
Export data	<div><div></div><div><div>– MATLAB</div><div>– Microsoft Excel</div><div>– Microsoft Word</div><div>– CSV</div></div></div>
Save and recall instrument state	
BenchVue mobile support	

Supported models (57)
E3631A, E3632A, E3633A, E3634A, E3640A, E3641A, E3642A, E3643A, E3644A, E3645A, E3646A, E3647A, E3648A, E3649A, E36102A, E36103A, E36104A, E36105A, E36106A, N6700A/B <sup>1</sup> , N6701A <sup>1</sup> , N6702A <sup>1</sup> , N6705A/B <sup>1</sup> , N6785A, N6786A, N6950A, N6951A, N6952A, N6953A, N6954A, N6970A, N6971A, N6972A, N6973A, N6974A, N6976A, N6977A, N7950A, N7951A, N7952A, N7953A, N7954A, N7970A, N7971A, N7972A, N7973A, N7974A, N7976A, N7977A
SMUs: B2901A, B2902A, B2911A, B2912A, B2961A, B2962A

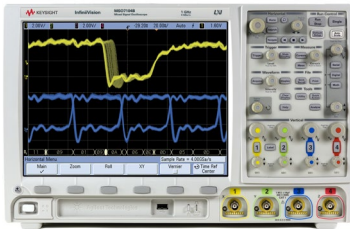
Pro version capabilities
Upgrading to the Pro version (model # BV0003A) provides unrestricted data logging and status alerts.

1. Modules that are compatible with these mainframes are supported.





# BenchVue Oscilloscope App



Control your oscilloscope to quickly capture and annotate screen images, record trace data and data log measurements.



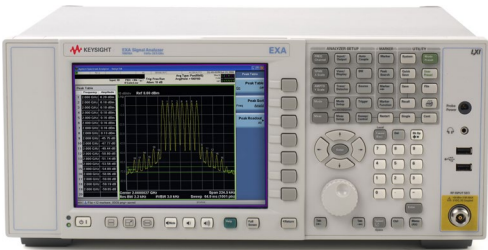
Supported functionality	
Instrument settings	<div><div></div><div><ul style="list-style-type: none"><li>– Auto scale</li><li>– Measurements toggle</li><li>– Run control</li><li>– Vertical scale and offset</li><li>– Channel toggle</li><li>– Trigger controls</li><li>– Default setup</li></ul></div></div>
Screen image	<div><div></div><div><ul style="list-style-type: none"><li>– Get current screen with image options</li><li>– Auto refresh control</li><li>– Annotation (drawing/color/font)</li></ul></div></div>
Trace data	<div><div></div><div><ul style="list-style-type: none"><li>– Get current traces</li><li>– Display selection (ch/func/mem/digital bus)</li><li>– Set requested points</li></ul></div></div>
Measurement data log	<div><div></div><div><ul style="list-style-type: none"><li>– Measurement data logging (1 hour duration)<ul style="list-style-type: none"><li>– Unrestricted logging with Pro version</li></ul></li><li>– Logger control</li><li>– Limit testing (Pro version only)</li><li>– Data log configuration</li></ul></div></div>
Export data log data	<div><div></div><div><ul style="list-style-type: none"><li>– MATLAB</li><li>– Microsoft Excel</li><li>– Microsoft Word</li><li>– CSV</li></ul></div></div>
Export screen images	<div><div></div><div><ul style="list-style-type: none"><li>– Clipboard</li><li>– File (PNG/JPEG/BMP)</li><li>– E-mail</li><li>– Microsoft Word</li></ul></div></div>
Export trace data	<div><div></div><div><ul style="list-style-type: none"><li>– HDF5</li><li>– MATLAB</li><li>– Microsoft Excel</li><li>– Microsoft Word</li><li>– CSV</li></ul></div></div>
Wavegen capabilities for selected scopes	2000 X-Series, 3000 X-Series, 3000 T-Series, 4000 X-Series, 6000 X-Series
Save and recall instrument state	
BenchVue Mobile support	

Supported models (164) (MSO & DSO)	
2000 X-Series, 3000 X-Series, 3000 T-Series, 4000 X-Series, Most 5000 Series, 6000 Series, 6000 X-Series, 7000A/B Series, 9000A Series, S-Series, most 90000 Series	

Pro version capabilities	
Upgrading to the Pro version (model # BV0004A) provides unrestricted measurement data logging with limit checking and alerts.	



# BenchVue Spectrum Analyzer App



Control your spectrum or signal analyzer to quickly capture and annotate screen images and log trace data.



Supported functionality	
Instrument settings	<div><div></div><div><ul style="list-style-type: none"><li>– Frequency</li><li>– Bandwidth</li><li>– Amplitude</li><li>– Sweep</li><li>– Mode preset</li><li>– Sweep control</li></ul></div></div>
Screen image	<div><div></div><div><ul style="list-style-type: none"><li>– Get current screen with image options</li><li>– Screen image logging (1 hour duration)<ul style="list-style-type: none"><li>– Unrestricted logging with Pro version</li></ul></li><li>– Annotation (drawing/color/font)</li></ul></div></div>
Trace data	<div><div></div><div><ul style="list-style-type: none"><li>– Get current traces</li><li>– Trace data logging (1 hour duration)<ul style="list-style-type: none"><li>– Unrestricted logging with Pro version</li></ul></li><li>– Save trace data (CSV)</li></ul></div></div>
Export screen images	<div><div></div><div><ul style="list-style-type: none"><li>– Clipboard</li><li>– File (PNG/JPEG/BMP)</li><li>– E-mail</li><li>– Microsoft Word</li></ul></div></div>
Export trace data	<div><div></div><div><ul style="list-style-type: none"><li>– MATLAB</li><li>– Microsoft Excel</li><li>– Microsoft Word</li><li>– CSV</li></ul></div></div>
Save and recall instrument state	
BenchVue mobile support	

Supported models (21)
UXA N9040B, PXA N9030A, MXA N9020A, EXA N9010A, CXA N9000A, PSA E444xx, ESA E440xx and E4411B, BSA N9320B, N9322C

Pro version capabilities
Upgrading to the Pro version (model # BV0005A) provides deep memory capture and unrestricted data logging of screen images and trace data.



# BenchVue Data Acquisition App



Control your 34970 or 34972 to data log and visualize measurements in a wide array of display options.



Supported functionality	
Module settings	<ul style="list-style-type: none"><li>– Slot selection</li><li>– Mode control (scan, switch, inactive)</li></ul>
Configure channels	<ul style="list-style-type: none"><li>– Enable channel<ul style="list-style-type: none"><li>– Toggle</li><li>– Naming</li></ul></li><li>– Measurement configuration<ul style="list-style-type: none"><li>– Function (DC voltage, AC voltage, period, frequency, 2-wire ohms, 4-wire ohms, temp types B, E, J, K, N, R, S, T, 2-wire RTD, 4-wire RTD, 2.2K therm, 5K therm, 10K therm)</li><li>– Range</li></ul></li><li>– Scaling<ul style="list-style-type: none"><li>– Toggle</li><li>– Gain</li><li>– Offset</li><li>– Label</li></ul></li><li>– Alarm limits<ul style="list-style-type: none"><li>– Test condition</li><li>– Test parameters</li></ul></li></ul>
Measurement display options	<ul style="list-style-type: none"><li>– Data grid</li><li>– Strip charts</li><li>– High visibility readout display</li><li>– Bar meter</li><li>– Histogram</li><li>– Alarm light panel</li><li>– Background settings</li></ul>
Measurement data log	<ul style="list-style-type: none"><li>– Measurement data logging (8 hour duration)<ul style="list-style-type: none"><li>– Unrestricted logging with Pro version</li></ul></li><li>– Logger control</li></ul>
Export screen image	<ul style="list-style-type: none"><li>– Clipboard</li><li>– File (PNG/JPEG/BMP)</li></ul>
Export data	<ul style="list-style-type: none"><li>– MATLAB</li><li>– Microsoft Excel</li><li>– Microsoft Word</li><li>– CSV</li></ul>
Save and recall instrument state	
Supported models (2)	
34970A, 34972A	(Modules that are compatible with these mainframes are supported)
Pro version capabilities	
Upgrading to the Pro version (model # BV0006A) provides unrestricted data logging.	

**KEYSIGHT** U2022XA  
USB Wideband Power Sensor  
50 MHz-40GHz

Maximum power +23 dBm (200 mW) Average, 20 VDC. Earth ground must be connected to USB horn. Turn connector nut only to tighten. 930 cm (8 in)

## Instrument settings

- Preset select (DME, GSM, WCDMA, WLAN, LTE, etc.)
- Instrument reset
- Channel setup
  - Mode, offset, frequency
- Trace setup
  - Units, scale configuration
- Measurement setup
  - Units, offset, feed setup, alerts, recorder
- Trigger setup
  - Mode, source, auto level, delay, slope type
- Gate setup
  - Start, length
- Calibration
  - Zero, calibration, calibration + zero
- Corrections
  - FDO, Gamma, S-parameter

- Digital meter view
- Analog meter view
- Data log view
- Trace view with markers and gate
- Multilist view
- Alert summary

- Measurement data logging (1 hour duration)
- Logger control

- Clipboard
- File (PNG/JPEG/BMP)
- E-mail

- MATLAB
- Microsoft Excel
- Microsoft Word
- CSV

### Supported models (7)

U2021XA, U2022XA, U2041XA, U2042XA, U2043XA, U2044XA, U2049XA LAN

Upgrading to the Pro version (model # BV0007A) provides unrestricted data logging.



# BenchVue Network Analyzer App



Quickly capture and annotate screen images and acquire trace data from your network analyzer for documentation and further analysis.



Supported functionality	
Screen image	<div><div></div><div><div>– Get current screen</div><div>– Auto refresh control</div><div>– Annotation (drawing/color/font)</div></div></div>
Trace data	<div><div></div><div><div>– Get current traces (16 upper limit)</div><div>– Individual trace toggle</div><div>– Formatted and corrected trace data selection</div><div>– Formatted and corrected memory data selection</div></div></div>
Export screen image	<div><div></div><div><div>– Clipboard</div><div>– File (PNG/JPEG/BMP)</div><div>– E-mail</div><div>– Microsoft Word</div></div></div>
Export data	<div><div></div><div><div>– MATLAB</div><div>– Microsoft Excel</div><div>– Microsoft Word</div><div>– CSV</div></div></div>
Save and recall instrument state	
Supported models (21)	
ENA	E5080A, E5061B, E5063A, E5071C, E5072A
PNA	N5221A, N5222A, N5224A, N5245A, N5227A
PNA-L	N5231A, N5232A, N5234A, N5235A, N5239A
PNA-X	N5241A, N5242A, N5244A, N5245A, N5247A, N5249A

## BenchVue Mobile

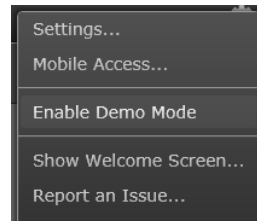
Mobile apps lets you monitor and respond to long running tests from anywhere. Multimeters, oscilloscopes, function generators, spectrum analyzers and power supplies are all supported from one app.



**BenchVue mobile** is a mobile app that you can install on an Android or Apple iOS device to control BenchVue bench applications running on your Windows computer. BenchVue mobile connects to your computer as a client, and requires that your mobile device and computer be connected to the same local network or intranet (behind the same corporate firewall). This network connection can be made via a WiFi connection inside your work location or externally through a VPN connection.

## BenchVue Demonstration Mode

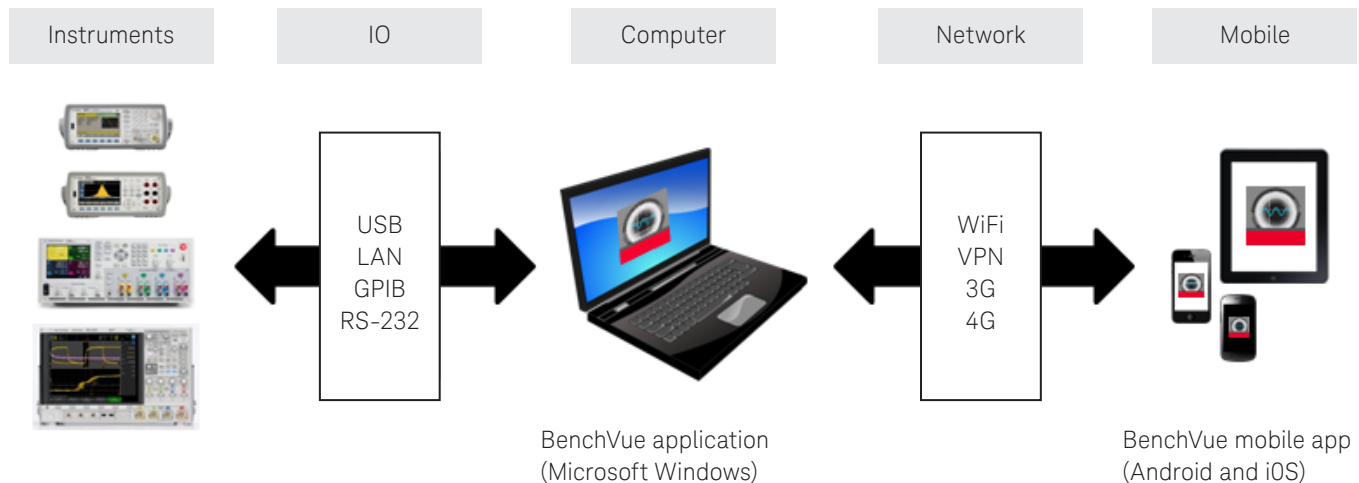
BenchVue includes a demonstration mode that requires no instruments to be connected, making product evaluation quick and easy. Simply download and click “enable demo mode” under the global setting menu to begin exploring BenchVue functionality.



To assist in the evaluation of BenchVue with physical instruments, BenchVue includes an integrated user manual and getting started guide to make setup quick and easy.

## Supported Apps for BenchVue Mobile

- Digital Multimeter app
- Function Generator app
- Power Supply app
- Spectrum Analyzer app
- Oscilloscope app



## System and Installation Requirements

### Computer operating system

Windows 10, 8, 7	– Windows 10 32-bit and 64-bit (Professional, Enterprise, Education, Home versions)
	– Windows 8 32-bit and 64-bit (Professional, Enterprise, Core)
	– Windows 7 SP1 and later 32-bit and 64-bit (Professional, Enterprise, Ultimate, Home Basic, Home Premium)

Computer hardware	Windows 10, 8 and 7
	– Processor: 1 GHz or faster (2 GHz or greater recommended)
	– RAM: 1 GB (32-bit) or 2 GB (64-bit) (3 GB or greater recommended)

Interfaces	USB, GPIB, LAN, RS-232
------------	------------------------

Display resolution	1024 x 768 minimum for single instrument view (higher resolutions are recommended for multiple instrument view)
--------------------	---

### Additional requirements

BenchVue requires a VISA (Keysight or National Instruments) when used to connect to physical instruments. Keysight IO Libraries Suite, which contains the necessary VISA, will be downloaded and installed automatically when BenchVue is installed if needed. IO Libraries Suite 16.3 or newer is recommended. IO Libraries Suite information is available at: [www.keysight.com/find/iosuite](http://www.keysight.com/find/iosuite)

### Mobile devices

Apple iPhone, iPad, iPod Touch all models; iOS 6.0 and later.  
Android phone and tablets; Android 2.3.5 and later.

With BenchVue, It's as Simple as:  
Click. Capture. Done.

### BenchVue software for PC

Download cost free at: [www.keysight.com/find/BenchVue](http://www.keysight.com/find/BenchVue)

### BenchVue software for mobile devices

Find BenchVue mobile for your respective device by visiting [www.keysight.com/find/BenchVueMobile](http://www.keysight.com/find/BenchVueMobile)

## Download your next insight

Keysight software is downloadable expertise. From first simulation through first customer shipment, we deliver the tools your team needs to accelerate from data to information to actionable insight.

- Electronic design automation (EDA) software
- Application software
- Programming environments
- Utility software



Learn more at

[www.keysight.com/find/software](http://www.keysight.com/find/software)

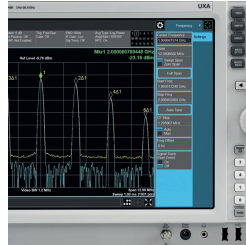
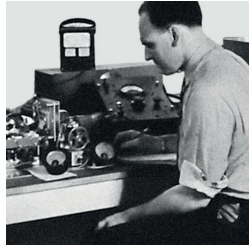
Start with a 30-day free trial.

[www.keysight.com/find/free\\_trials](http://www.keysight.com/find/free_trials)



## From Hewlett-Packard through Agilent to Keysight

For more than 75 years, we've been helping you unlock measurement insights. Our unique combination of hardware, software and people can help you reach your next breakthrough. **Unlocking measurement insights since 1939.**



1939 THE FUTURE

### myKeysight

#### myKeysight

[www.keysight.com/find/mykeysight](http://www.keysight.com/find/mykeysight)

A personalized view into the information most relevant to you.

#### Keysight Channel Partners

[www.keysight.com/find/channelpartners](http://www.keysight.com/find/channelpartners)

Get the best of both worlds: Keysight's measurement expertise and product breadth, combined with channel partner convenience.

[www.keysight.com](http://www.keysight.com)

[www.keysight.com/find/benchvue](http://www.keysight.com/find/benchvue)

For more information on Keysight Technologies' products, applications or services, please contact your local Keysight office. The complete list is available at: [www.keysight.com/find/contactus](http://www.keysight.com/find/contactus)

#### Americas

Canada	(877) 894 4414
Brazil	55 11 3351 7010
Mexico	001 800 254 2440
United States	(800) 829 4444

#### Asia Pacific

Australia	1 800 629 485
China	800 810 0189
Hong Kong	800 938 693
India	1 800 11 2626
Japan	0120 (421) 345
Korea	080 769 0800
Malaysia	1 800 888 848
Singapore	1 800 375 8100
Taiwan	0800 047 866
Other AP Countries	(65) 6375 8100

#### Europe & Middle East

Austria	0800 001122
Belgium	0800 58580
Finland	0800 523252
France	0805 980333
Germany	0800 6270999
Ireland	1800 832700
Israel	1 809 343051
Italy	800 599100
Luxembourg	+32 800 58580
Netherlands	0800 0233200
Russia	8800 5009286
Spain	800 000154
Sweden	0200 882255
Switzerland	0800 805353
	Opt. 1 (DE)
	Opt. 2 (FR)
	Opt. 3 (IT)
United Kingdom	0800 0260637

For other unlisted countries:  
[www.keysight.com/find/contactus](http://www.keysight.com/find/contactus)  
 (BP-10-30-15)