

Installation and Set-Up Guide



Introduction

The Helvar uSee Interface enables you to use a web browser to access and control a Helvar Router lighting control system. It is a hardware and software platform that, used in conjunction with a Helvar Router system, allows the user to view the system, select scenes, programme new scene levels, apply alternate scene and group names, and monitor energy use. The uSee interface provides both wired and wireless connectivity to all popular web browsing devices, such as an iPad, and provides an easy to use, intuitive graphical means of control of the lighting system.

1: Mount to wall

Mounting, Environmental and Clearance Requirements

Mounting

- Mount the unit on a flat surface.
- Use No.8 or No. 10 screws with a head diameter between 6 mm and 9 mm.
- Use wall plugs if necessary.
- Refer to the 'Mounting Dimensions' diagram on the next page.

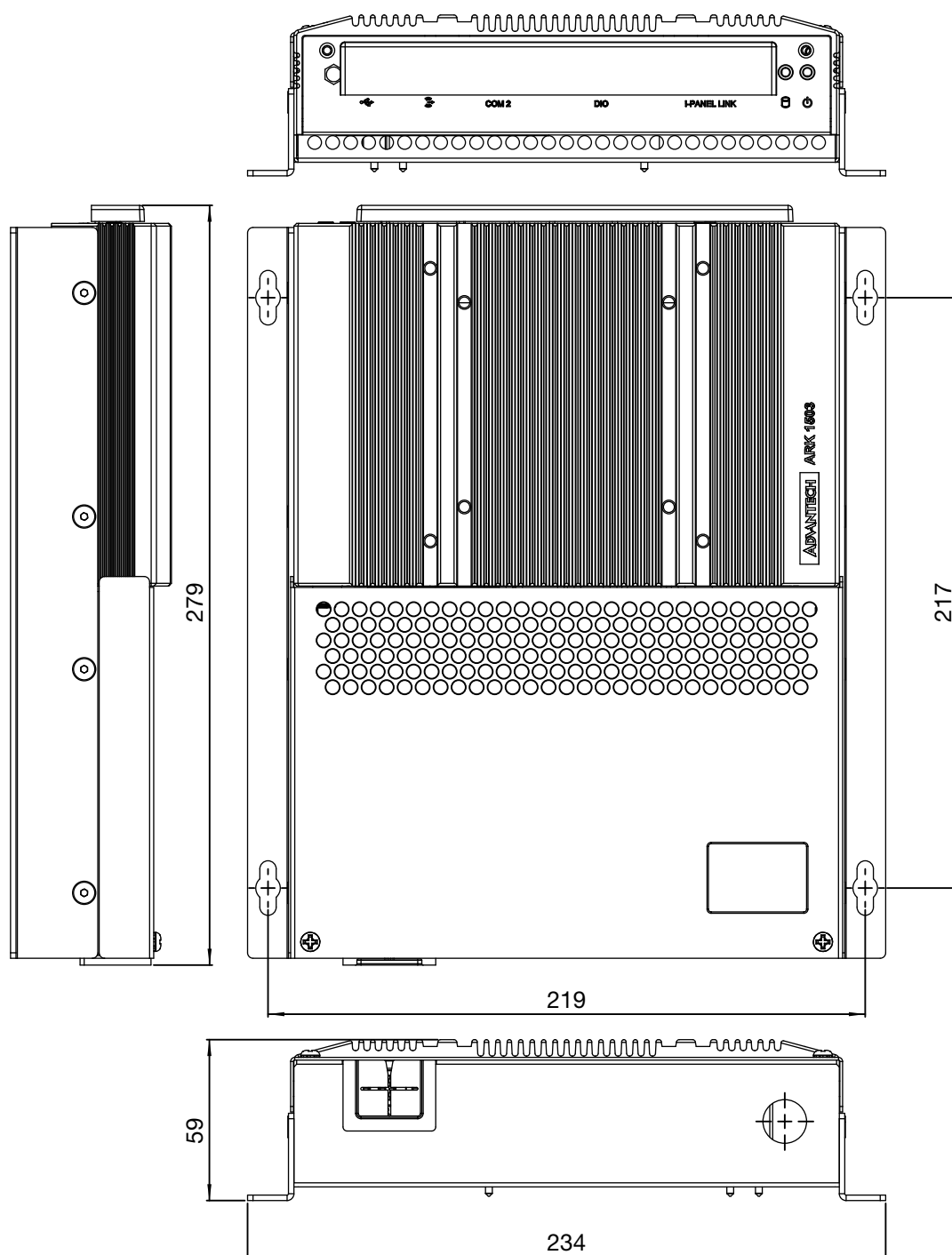
Environment

- The ambient temperature must be between 0°C and 40°C.
- Air humidity must be between 0% and 90% (non-condensing).
- The area must be adequately ventilated.
- Do NOT install this product in a damp location.

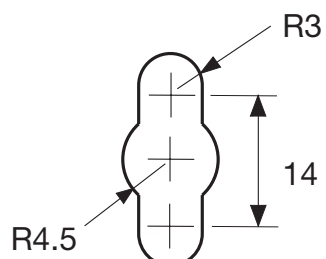
Clearance

- Leave sufficient clearance (at least 100 mm) to allow cables to be connected.

Mounting dimensions



Chassis mounting hole dimensions

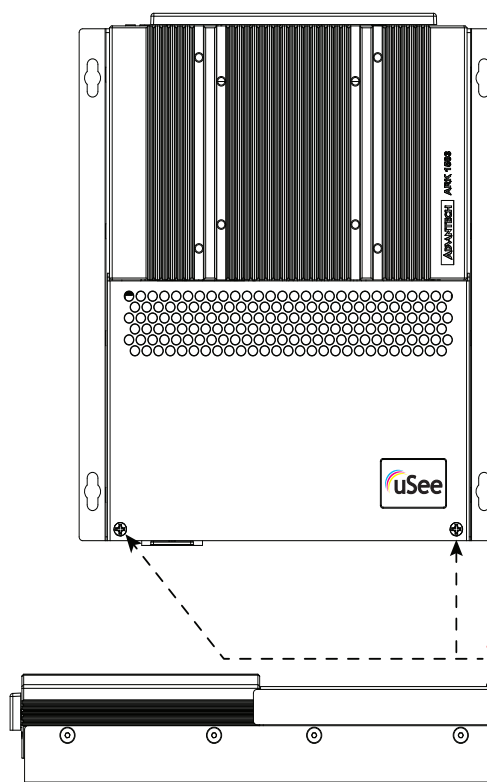


2: Electrical installation

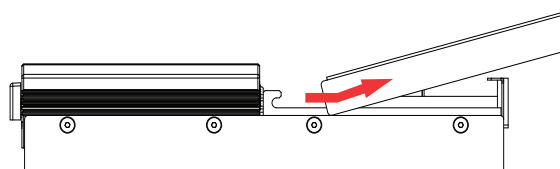
WARNING: BEFORE COMMENCING ANY ELECTRICAL WORK, ISOLATE THE ELECTRICITY SUPPLY AT THE MAIN DISTRIBUTION BOARD.

2.1: Remove the cover

1. Remove the two screws securing the cover.

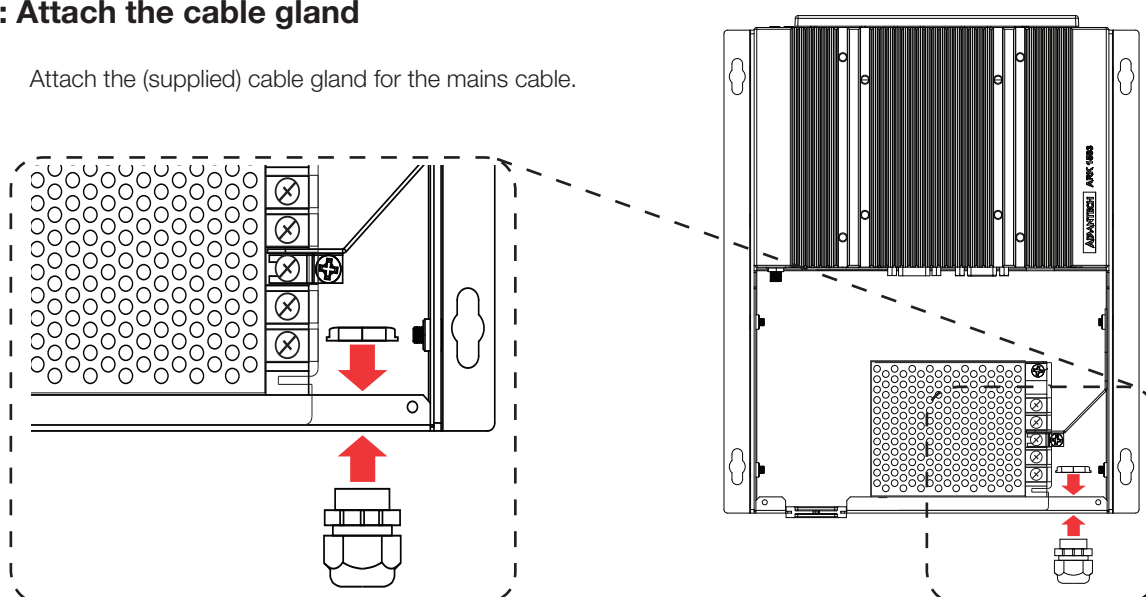


2. Tilt the cover and slide it backwards



2.2: Attach the cable gland

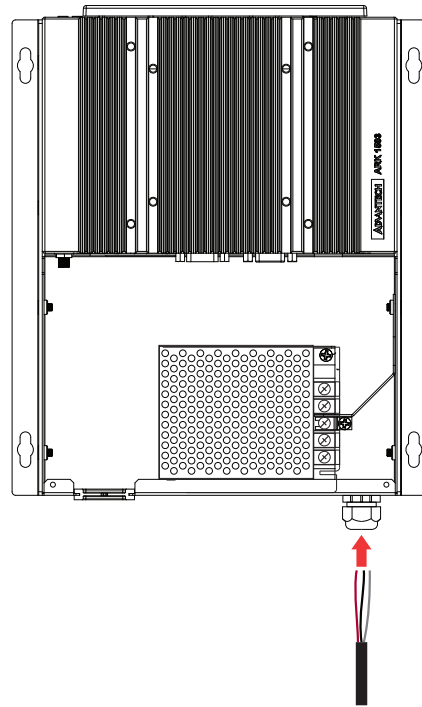
1. Attach the (supplied) cable gland for the mains cable.



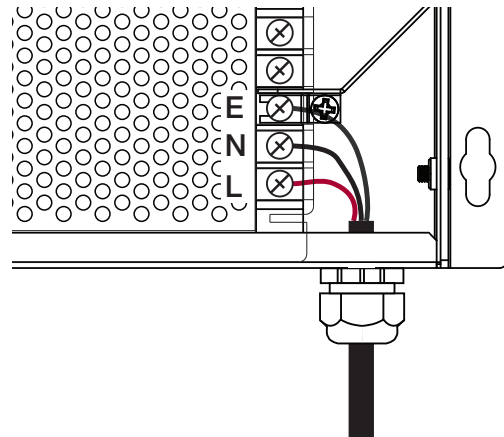
WARNING: THE SUPPLY INPUT EARTH **MUST** BE CONNECTED.

2.3: Connect the mains supply

1. Pass the wire through the cable gland
2. Strip the cable



3. Connect the L, N and Earth as shown



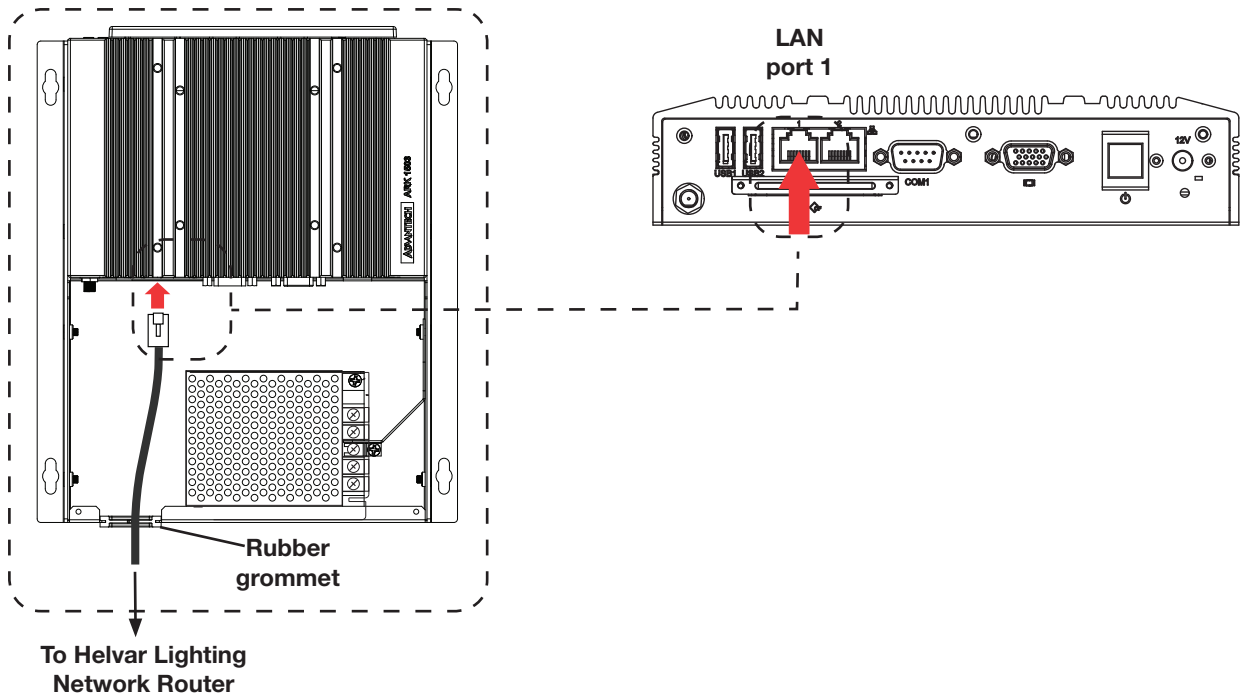
3. Pull back any excess cable through the grip

4. Tighten the cable grip to retain the wire

3: Connect to the Lighting Network

3.1: Connect the Helvar 'Lighting Router' network

1. Plug the Ethernet cable from the Helvar 'Lighting Router' network into 'Port 1' on the uSee unit
2. Push the cable into the rubber grommet as it exits the enclosure
3. Leave sufficient clearance around the uSee unit to give enough space to ensure the cables are not crushed or bent in a manner that may affect their performance.



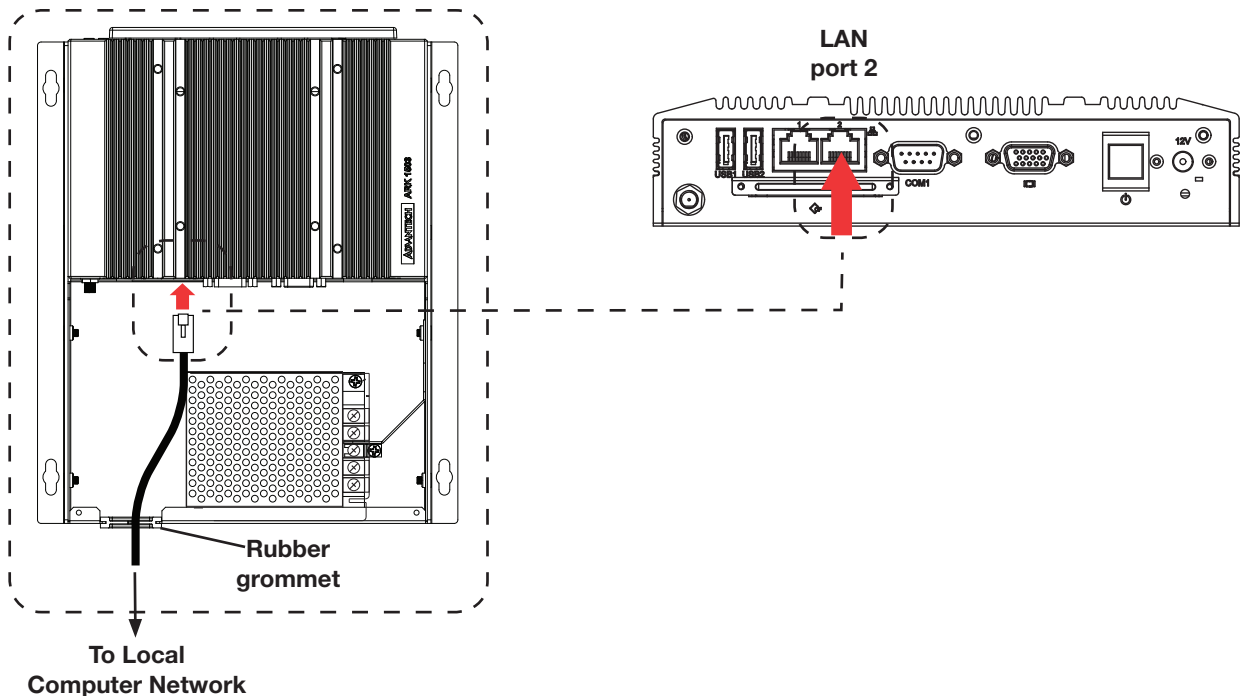
4: Connect to the uSee Interface from a browser

To access and control the uSee unit, connect using a web browser on an external device, such as a laptop or tablet PC. You can connect either via:

- a direct wired Ethernet network connection or
- a wireless LAN connection (802.11b/g)

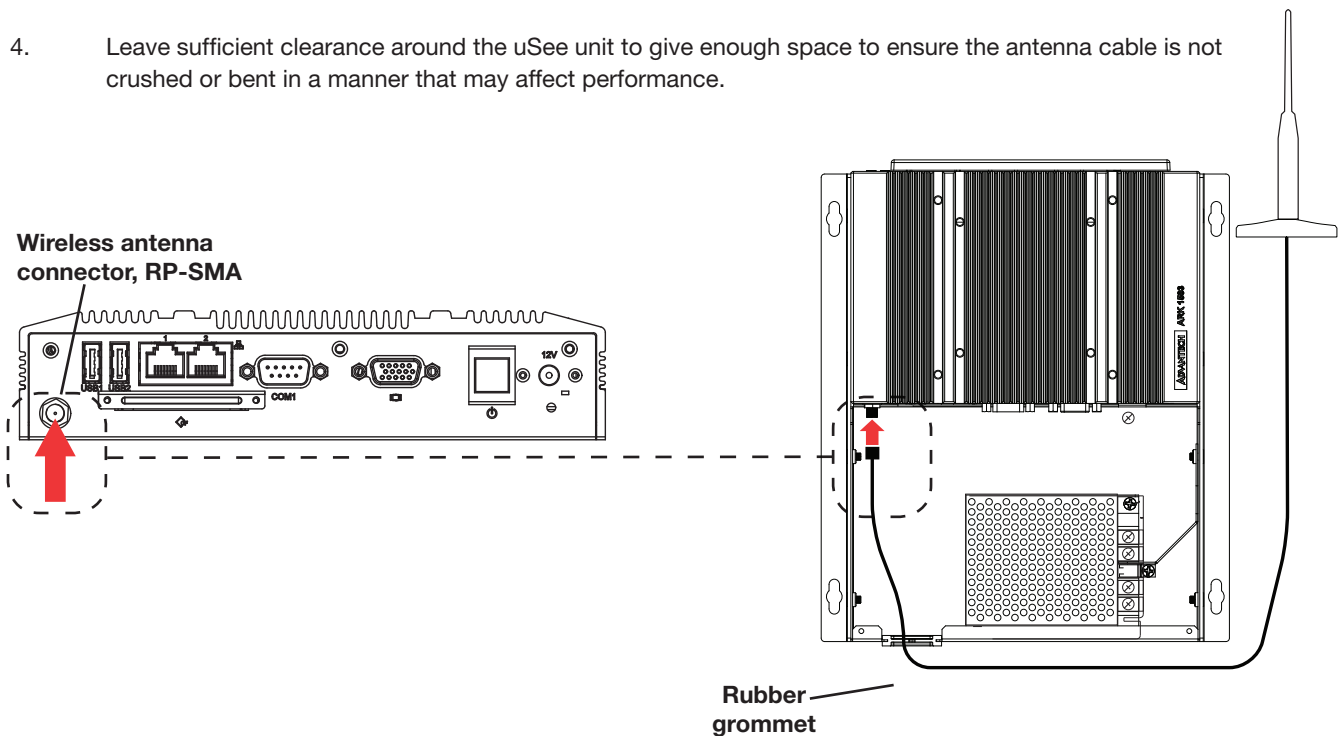
4.1: Connecting to a direct wired Ethernet network (optional)

1. Plug the Ethernet cable from the local computer network in to 'LAN Port 2' on the uSee unit.
2. Push the cable into the rubber grommet as it exits the enclosure.
3. Leave sufficient clearance around the uSee unit to give enough space to ensure the cables are not crushed or bent in a manner that may affect their performance.



4.2: Connecting the external antenna for wireless networking (recommended)

1. Screw the external antenna cable in to the socket of the uSee unit
2. Push the cable into the rubber grommet as it exits the enclosure
3. Screw the antenna into the base. The base is magnetic for secure mounting on ferrous materials
4. Leave sufficient clearance around the uSee unit to give enough space to ensure the antenna cable is not crushed or bent in a manner that may affect performance.



Siting the antenna: recommendations

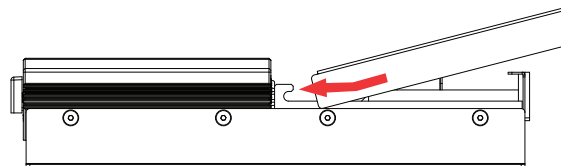
These recommendations will help in optimizing the performance and reliability of the wireless connection:

1. Set up your router as close as possible to the centre of the area you want to provide wireless networking for.
2. Keep the antenna away from objects that cause wireless interference. Large metal objects, fluorescent or halogen lights, microwaves, cordless phones and their base stations, and wall ducting or vents can block or interfere with wireless signals.
3. Place the antenna in an elevated location.
4. Point the top of the antenna upwards if it is positioned below the coverage area. Point the top of the antenna down if it is positioned above the coverage area, e.g., if it is wall-mounted near the ceiling.

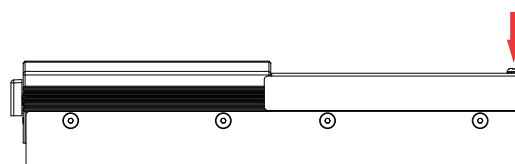
5: Replace cover and power uSee Interface on

5.1: Replace the cover

1. Tilt the cover so the front pegs locate in to the slots and slide it forwards.



2. Push the bottom of the cover downwards and secure it with the two retaining screws.



5.2: Switch on mains power supply and check operation

1. Switch on the mains power supply.
2. Check that 12 V power is being supplied: the PWR and HDD LEDs at the top of the unit should be on (PWR) and flashing (HDD).

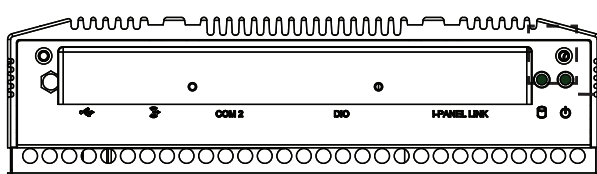
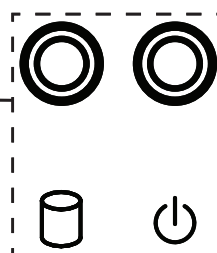


Diagram: HDD and PWR indicators



With the unit powered on, you can now configure the uSee Interface: see the next section for details.

6: Configuring the uSee Interface

The uSee Interface is best configured using wireless access and a web browser.

If a wireless connection is not possible, use the 'Direct connection' option.

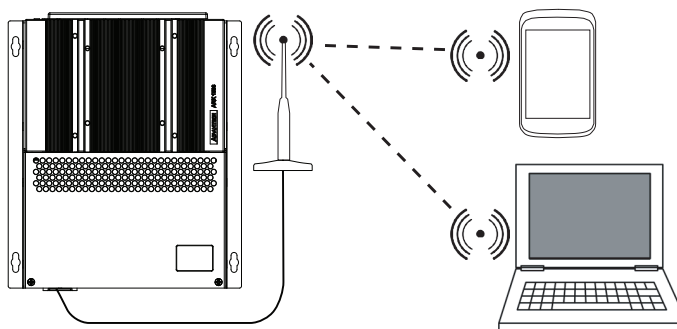
Note 1: It is possible to connect to the uSee Interface using a standard browser, running on many different operating systems.

Note 2: Minimum display screen resolution is 1024 x 768.

Web browser, wireless Ethernet

Connect via wireless Ethernet to the uSee Interface using a PC, tablet PC or smartphone (any device running a web browser).

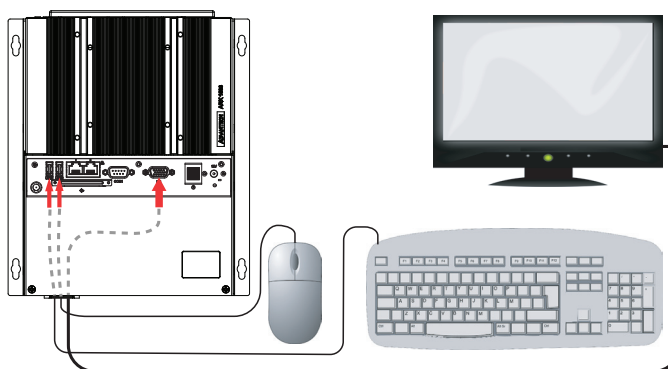
See section 6.1 for configuration instructions.



Direct control (keyboard, mouse, monitor)

Operate the uSee Interface directly, using a keyboard, mouse and monitor/display.

See section 6.2 for configuration instructions.

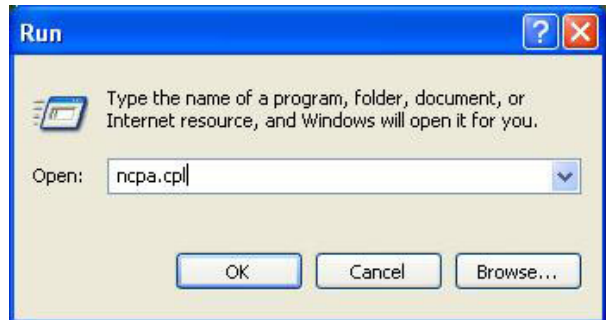
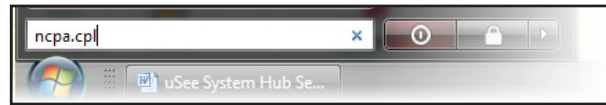


6.1: Initial access to the uSee Interface: Wireless Ethernet

6.1.1. Open 'Network Connections' window

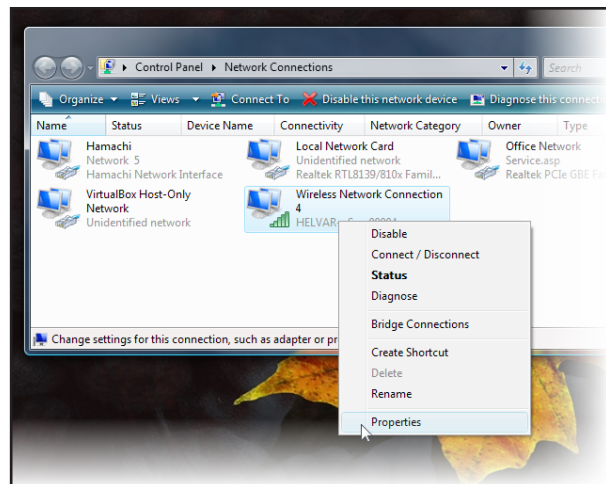
1. Click the Windows logo.
2. Access 'ncpa.cpl' from the Windows Search box.
(On Windows XP, use the Start > Run... dialogue box)

The Network connections window can also be accessed via the Windows Control Panel.



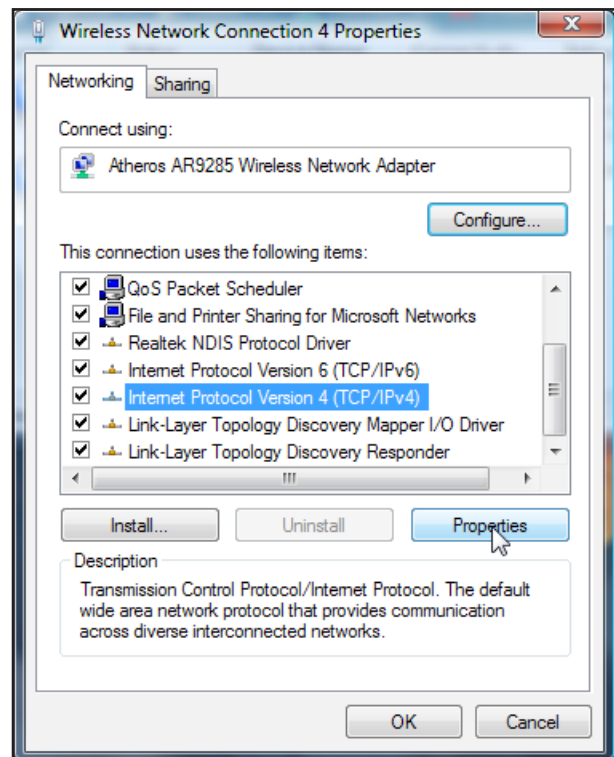
6.1.2. Access Wireless Network Adapter properties

1. Right-click the wireless network adapter
2. Select 'Properties'



6.1.3. Access Internet Protocol properties

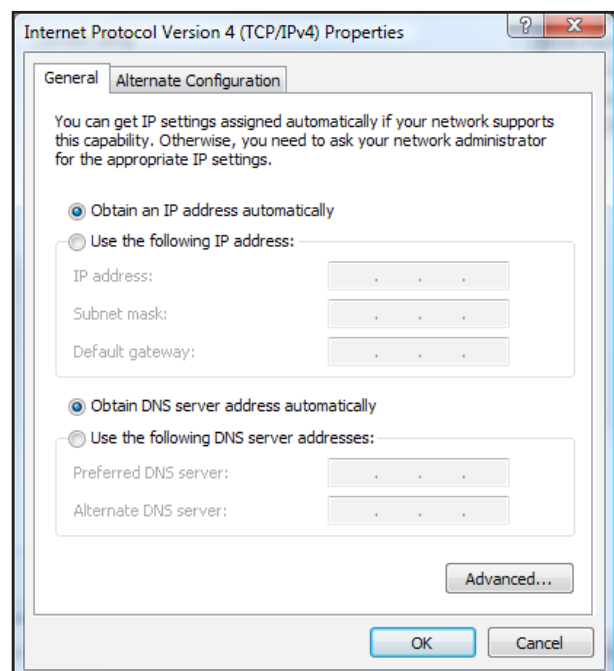
1. Select the 'Internet Protocol' item. If more than one is listed, select the IPv4 item.



2. Click the 'Properties' button: the 'Internet Protocol (TCP/IP) Properties' window opens.

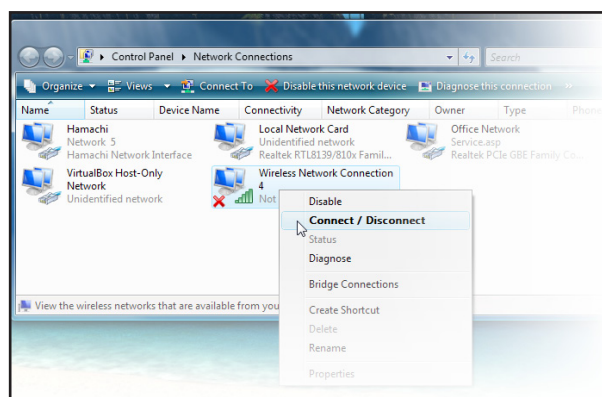
6.1.4. Set the PC's IP address and subnet mask

1. Click 'Obtain an IP address automatically'
2. Click 'Obtain DNS server address automatically'
3. Click 'OK'
4. Click 'Close' in the 'Wireless Network Connections Properties' window



6.1.5. Connect the PC to the wireless network

1. In the 'Network Connections' window, right-click the wireless network adapter.



2. Select 'Connect/Disconnect'

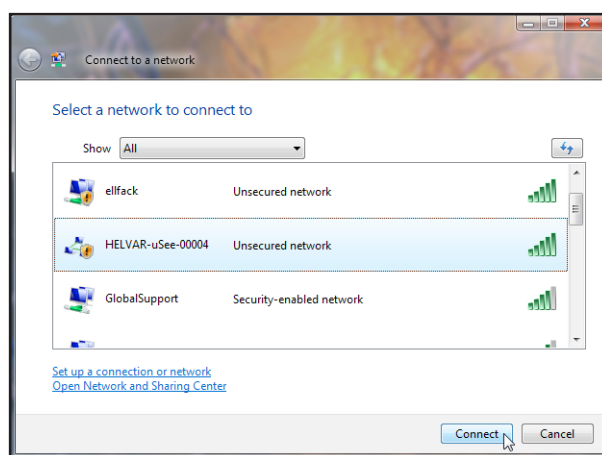
3. Select the uSee Interface's wireless network.

The network SSID will be :

HELVARuSeeXXXXX

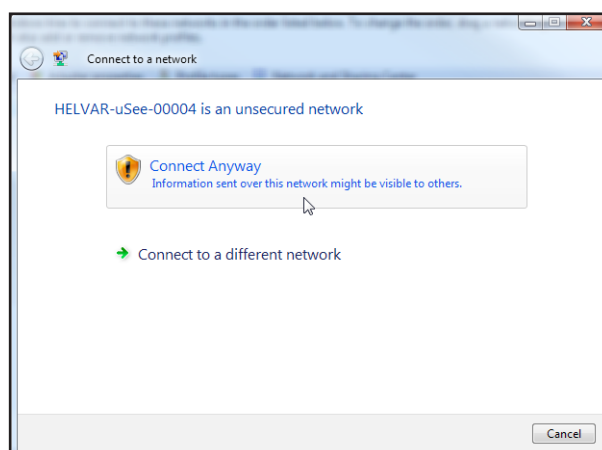
where XXXXX is the uSee Interface's serial number,

The serial number is printed on a label on the uSee Interface.



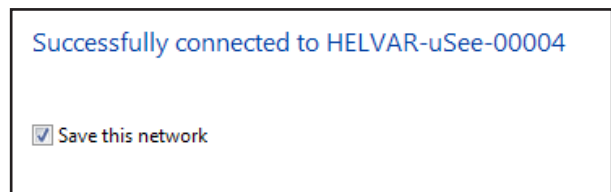
4. Click 'Connect'

5. Click 'Connect Anyway'
(when warned that information on this network may be visible to other people)



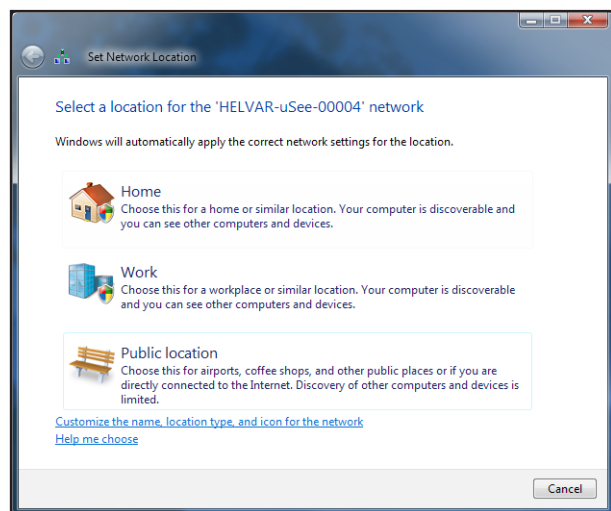
6.1.6. Save the network settings to your PC

1. When prompted, choose the 'Save this network' option



6.1.7. Set network location as 'Public location'

1. When prompted, choose the 'Public location' option.
2. Go to Section 7



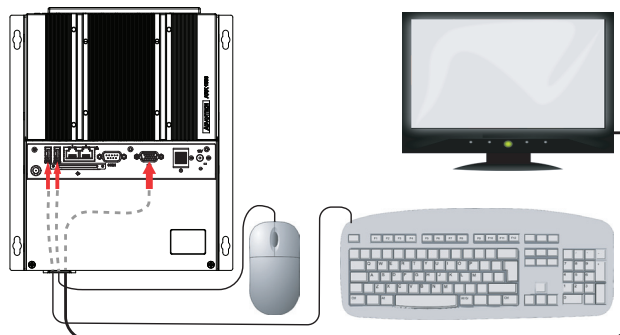
6.2: Initial access to the uSee Interface: Direct Control

NOTE: THIS ACCESS METHOD IS ONLY REQUIRED WHEN THERE IS NO WIRELESS CONNECTION AVAILABLE.

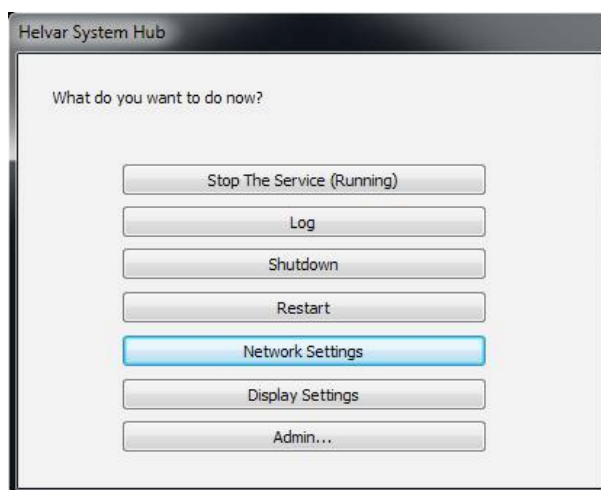
6.2.1. Connect a USB mouse and USB keyboard to the uSee Interface

6.2.2. Connect a monitor/display to the uSee Interface.

The uSee Interface video port is VGA: you may need to use a DVI to VGA converter.



6.2.3. With the uSee Interface powered on, you should see the uSee Interface initail set-up screen



6.2.4. Configure the uSee Interface's network settings

Consult the network administrator for IP settings compatible with your network.

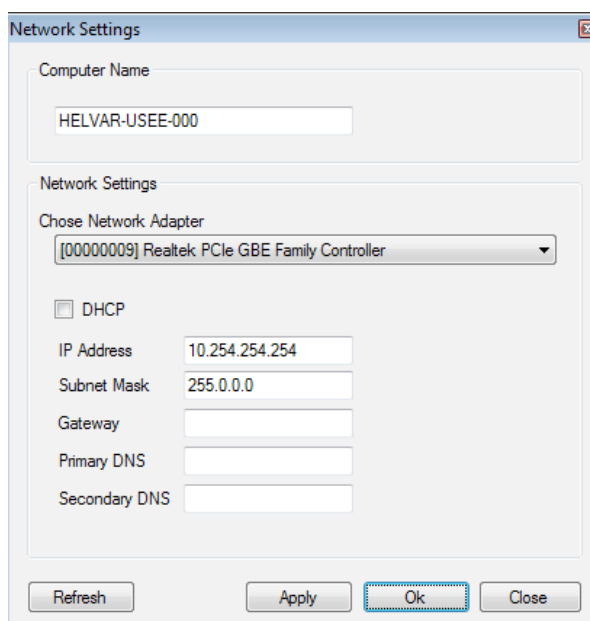
1a. Click on 'Network Settings'

1b. Enter the required IP address of the uSee Interface.

1c. Enter subnet mask, Gateway, and DNS values.

1d. Click 'Apply', and then 'Close'

Discovery of a workgroup and any further setup of the uSee Interface should be managed via the Configuration section of its web interface (see next section)



7: Accessing the uSee for the first time

7.1: Access the uSee Interface from a web browser

1. Start your web browser (e.g. Internet Explorer, Firefox, Chrome or Safari)
2. In the browser's address bar, type the IP address of the uSee Interface.
The default IP address is 192.168.1.1.

7.2: Create a Local Administrator account

When you access the uSee for the first time, you are prompted to create an administrator account for unit.

Create New Administrator

Administrator User	
All fields marked with a * are required	
User Name:	<input style="width: 60%;" type="text"/> *
Passwords must be at least 8 characters, contain at least one digit and one alphabetic character, and must not contain special characters.	
Password:	<input style="width: 60%;" type="password"/> *
Confirm Password:	<input style="width: 60%;" type="password"/> *
Please provide a valid email address.	
Email:	<input style="width: 60%;" type="text"/> *
Receive Email:	<input checked="" type="checkbox"/>
Forename:	<input style="width: 60%;" type="text"/>
Surname:	<input style="width: 60%;" type="text"/>
<input type="button" value="Add User"/> <input type="button" value="Reset"/>	

Enter the following details:

User name
 Password
 Email address (Used by uSee to send results and logs)
 Forename
 Surname

and click 'Add User'

The uSee main screen will be displayed, and you can log in (see next section)

8: Logging in to the uSee

8.1: Log in to uSee

1. Click on the 'Login' link (above the 'Configuration' button) on the uSee main screen. - - - - -

Helvar's Nightclub – *'Helvar's Nightclub' is a workgroup included in the uSee module for demonstration purposes.*



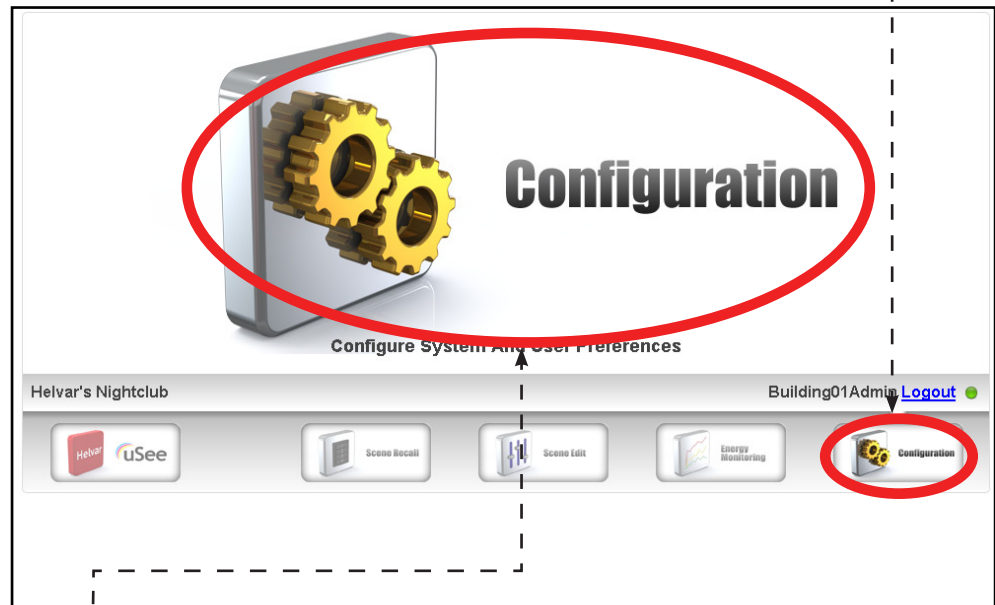
2. In the window that opens, enter the administrator username and password

3. Click 'Log In' and the main screen is displayed. Now create two more user accounts: see next section.

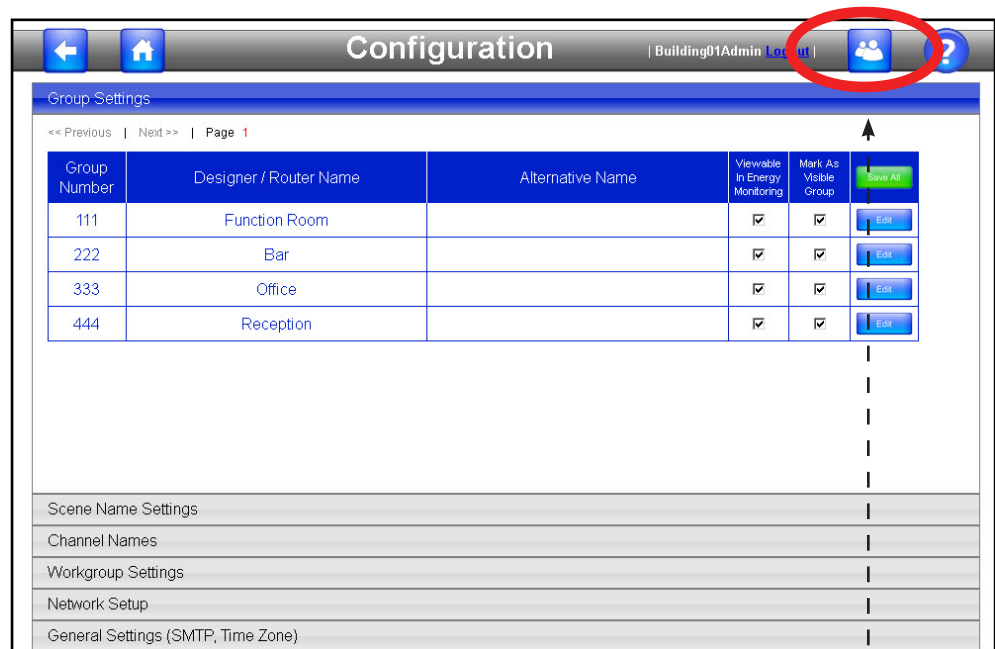


8.2: Create 'Editor' and 'BasicUser' Accounts

1. On the main screen, click on the small 'Configuration' button (bottom right of screen) - - - - -



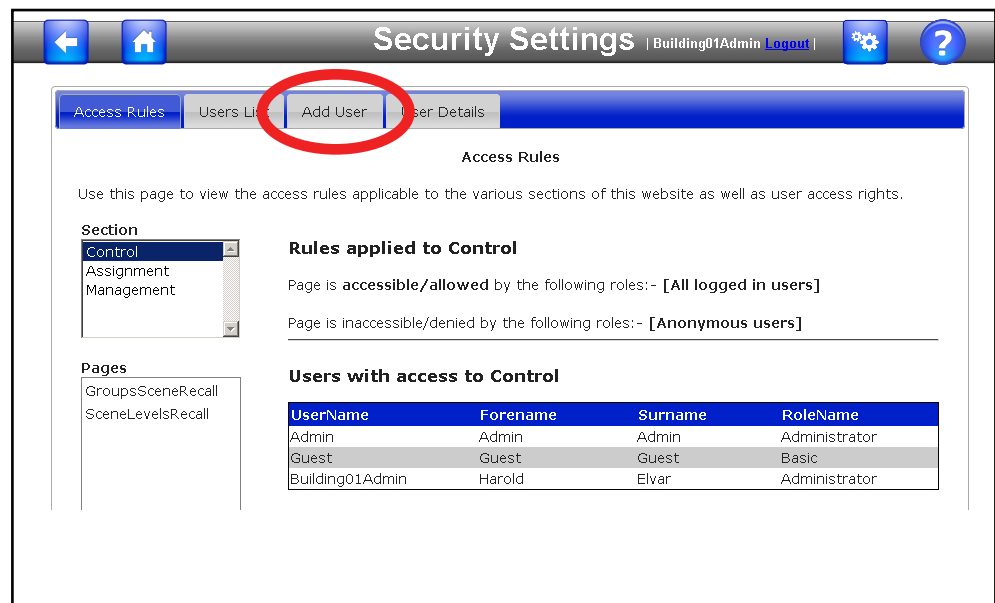
2. Click on the Configuration graphic or text to open the Configuration options page



3. Click the 'Security Settings' icon (top right of 'Configurations page'). The Security Settings page screen opens.



- On the Security Settings screen, click the 'Add User' tab:



- Add a new user in the role of 'Editor' (enter the details and click 'Add User')

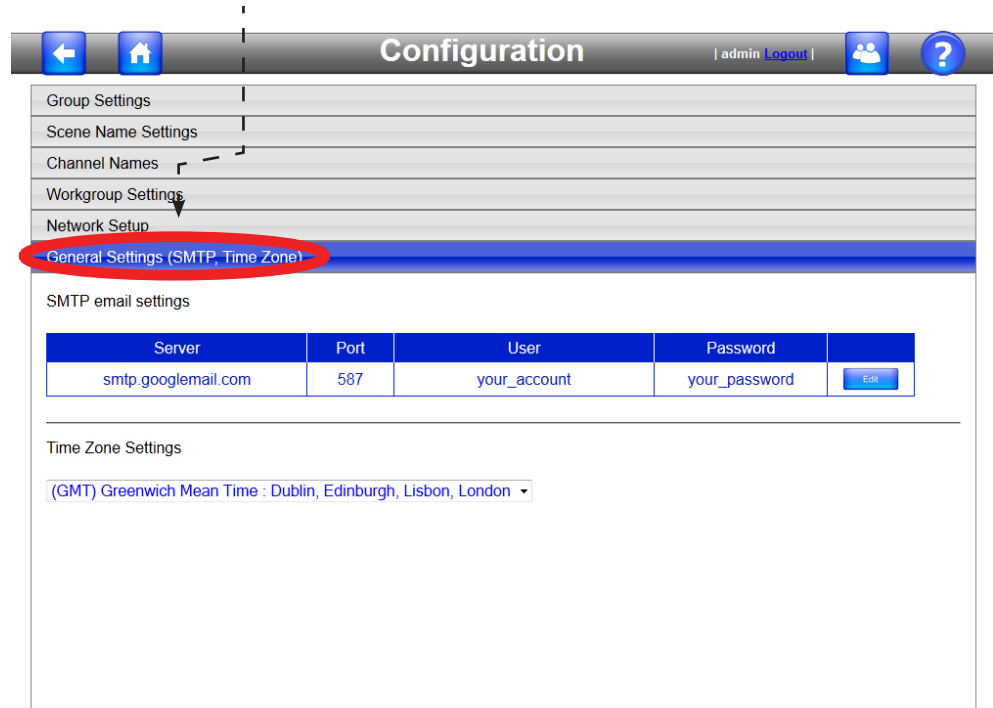
The screenshot shows the 'Add New User' form. It has a title bar 'Add New User' and a note 'All fields marked with a * are required'. The form contains several input fields: 'User Name' (with 'Building01Admin' entered), 'Password', 'Confirm Password', 'Email', and 'Receive Email' (checked). There are also fields for 'Forename', 'Surname', and 'User Role'. The 'User Role' dropdown menu is open, showing options: 'Basic', 'Administrator', 'Basic', and 'Editor'. The 'Editor' option is highlighted with a red circle. A 'Reset' button is located at the bottom right of the form.

- Add another new user in the role of a 'Basic' User (enter the details and click 'Add User')
- Click the 'Home' icon to return to the uSee main screen.

9: Configuring the SMTP and Time Zone Settings

9.1: Edit the 'General Settings' settings in the Configuration settings screen

1. On the Configuration settings screen, click 'General Settings'

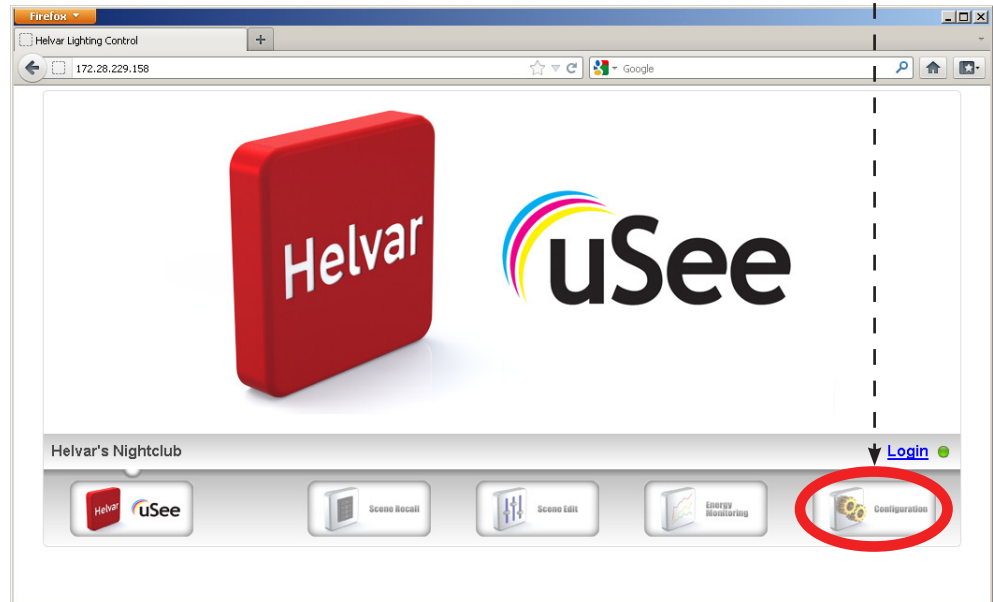


2. In the 'SMTP mail settings' section, click the 'Edit' button, enter the details, and click the green tick.
3. In Time Zone Settings, select the correct time zone from the drop-down list.

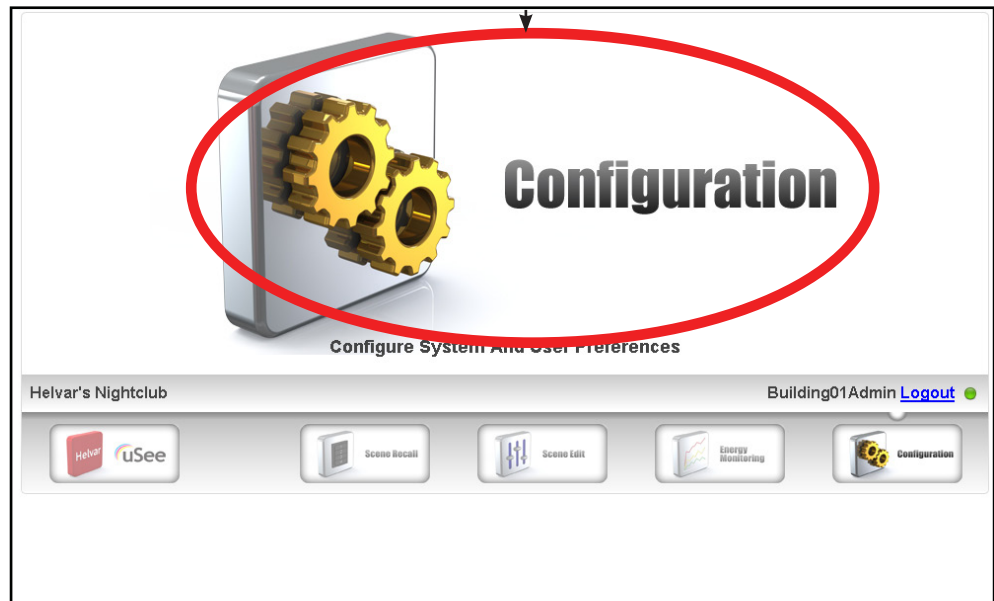
10: Configuring the uSee Wired Network Settings

10.1: Open the Configuration settings page

1. On the main screen, click on the small 'Configuration' button (bottom right of screen) - - - - -

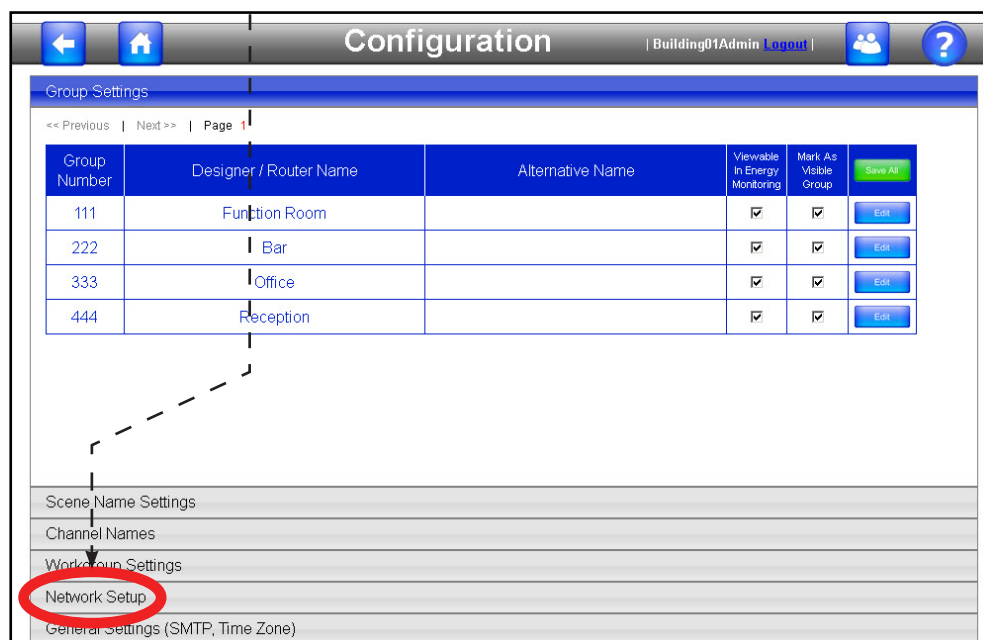


2. On the configuration screen, click on the Configuration graphic or text - - -

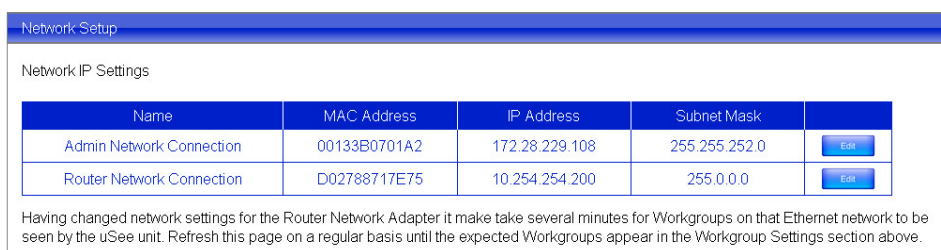


10.2: Edit 'Network Setup' settings in Configuration settings screen

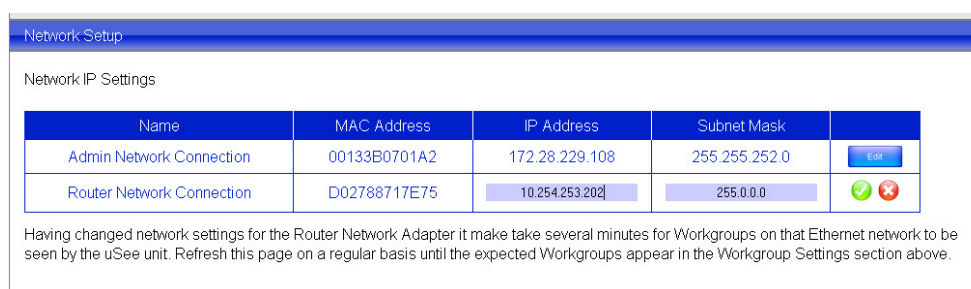
1. On the Configuration settings screen, click 'Network Setup' (bottom of screen)



2. The network settings will be displayed



3. Click the 'Edit' button for the Router Network Connection (connection from uSee unit to the lighting router system).



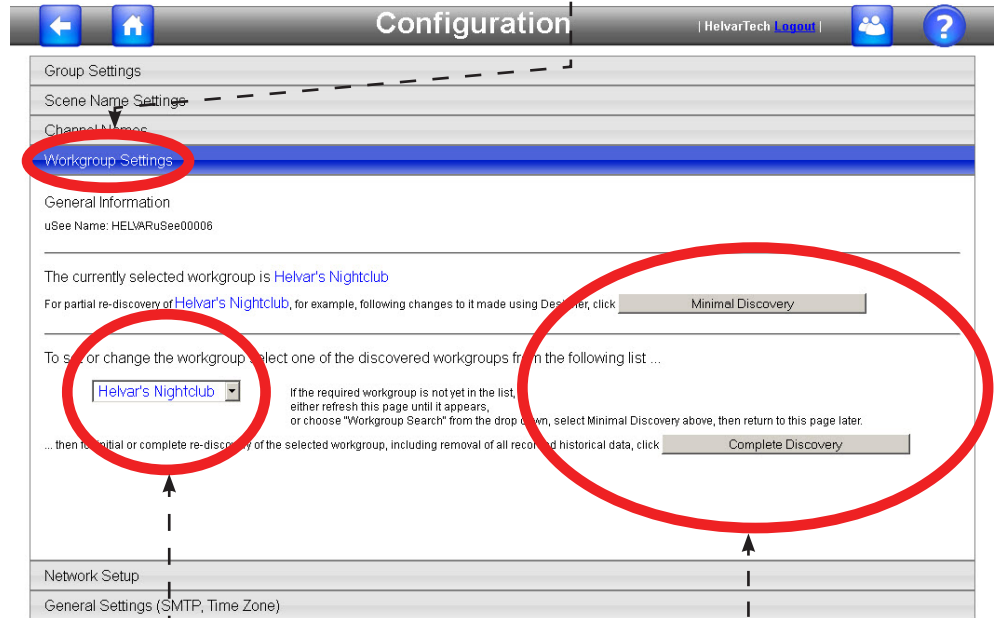
Consult the network administrator or commissioning engineer for IP settings compatible with your LIGHTING ROUTER network.

4. Edit the network settings , and click the green 'tick' icon, to save the settings.

Having changed network settings for the Router Network Adapter it may take several minutes for Workgroups on that Ethernet network to be seen by the uSee unit. Refresh this page on a regular basis until the expected Workgroups appear in the Workgroup Settings section.

5. Check that the connection has been made: click the 'Workgroup Settings' bar.

When the connection is made, the workgroup name will appear in the 'Workgroup Settings' section of the Configuration Settings page.



6. Click the drop-down list of workgroups.
7. When the connection is made, the workgroup name will appear in the list: select it.
8. Click 'Minimal Discover' or 'Complete Discovery'.
9. Click the 'Home' icon to return to the uSee main screen.



10. You can now control the lighting system using uSee: see the user manual for details.



Technical Data

Power

Mains supply voltage: 88 - 264 VAC; 47 - 63 Hz
 Power consumption: 14 W
 Protection: Max. 6 A MCB
 Supply current: 0.55 A / 230 V

Cable Requirements

Gland cable range: Diameter: 5 - 10 mm

Mechanical Data

Dimensions (L x W x H): See diagrams on page 10.
 Weight: 2.5 kg
 IP rating: IP20

Installation








Mounting: Wall mounted. Refer to mounting dimensions and clearance diagrams

Operating and Storage Conditions

Ambient Temperature: 0°C to 40°C
 Storage Temperature: -10°C to 70°C
 Relative Humidity: Max 90%, non-condensing

Conformity and Standards

EMC **Emission:** EN 55022
 Immunity: EN 61000
Safety: EN 60950
Isolation: 3 kV
Environmental: Complies with WEEE and RoHS directives
Class A product: This is a Class A product. In a domestic environment this product may cause radio interference in which case the user may be required to take adequate measures.

 For further information see www.helvar.com
 Für weitere informationen siehe www.helvar.com
 Lisätietoja: www.helvar.com
 För mer information besök www.helvar.com
 Pour plus d'informations, visitez www.helvar.com
 Per ulteriori informazioni consultare www.helvar.com
 Дополнительную информацию см на www.helvar.com

www.helvar.com