



AirPTT PC Receiver Manual v1.1

Windows Application

Mar 2015

Summary

This document describes about User's Manual of AirPTT Application.



차례

1. AirPTT PC Receiver?	3
2. AirPTT PC Receiver Overview	4
2.1. Main Window	4
2.2. PTT Channel Window	5
3. How to Use AirPTT PC Receiver	6
3.1. Installing AirPTT PC Receiver	6
3.2. Setting Service Server – Normal User	7
3.3. Setting Service Server – ASP User	8
3.4. Setting Service Server – FingerEye/AirPTT(Dedicated Server) User	9
3.5. Connecting to Service Server	11
3.6. Connecting to PTT Channel	12
3.7. Transmit and Receive PTT	13
3.8. Change User Name	14
3.9. Emergency Lock	15
3.10. Chat	17
3.11. View PTT List (History)	18
3.12. Check other 's Location	19
3.13. Volume Control	20
3.14. PTT User List	21
3.15. Settings	22
4. FAQ	23
4.1. Service Server, PTT Channel	23
4.2. etc.	23
4.3. AirPTT Customer Center	23

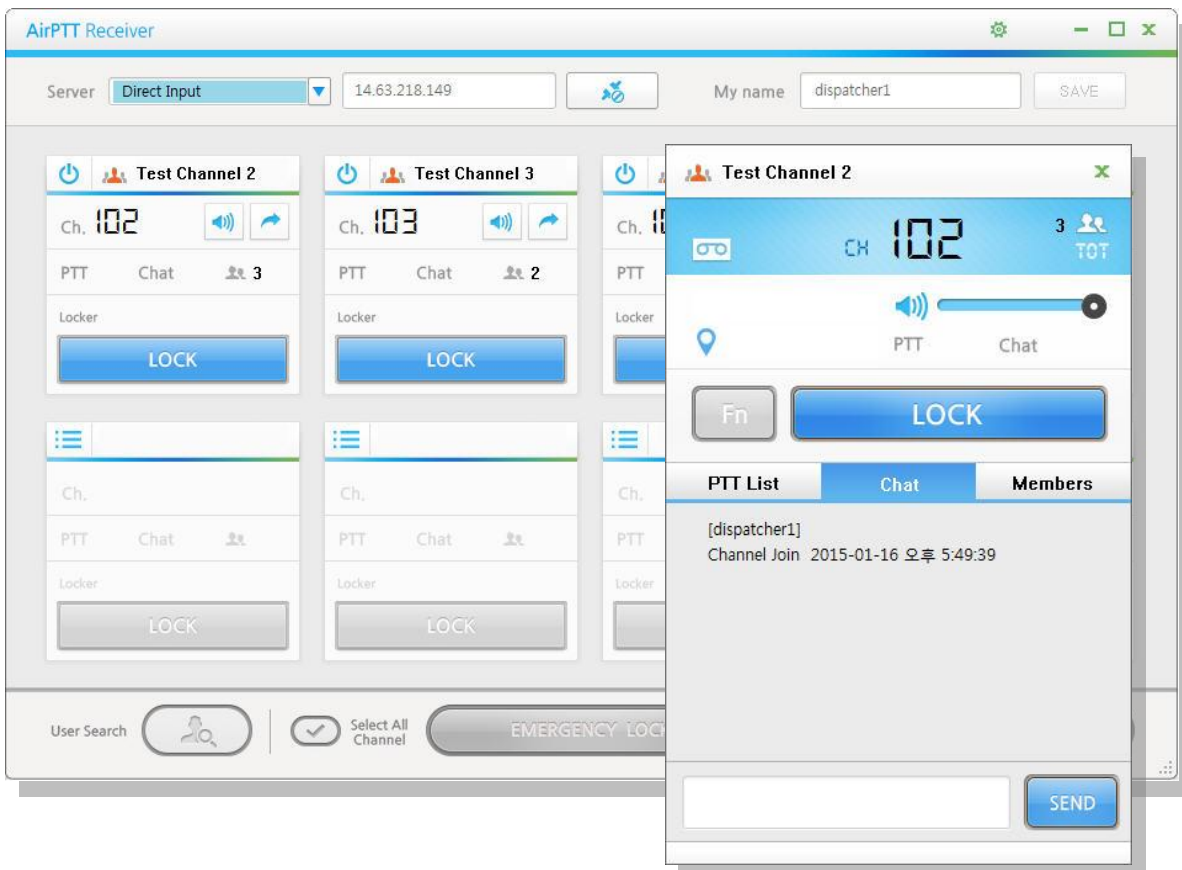
1. AirPTT PC Receiver?

'AirPTT', which is software based PTT(Push-To-Talk), provides voice and text based instant communication(1:N) service based on wireless internet environments such as Wi-Fi, 3G, LTE, etc. and various types of N-Screen terminals including Smartphone, Tablet PC, Desktop PC, etc. .

AirPTT now in your PC! Connecting to multiple channels, send and receive PTT and communicate with your members.



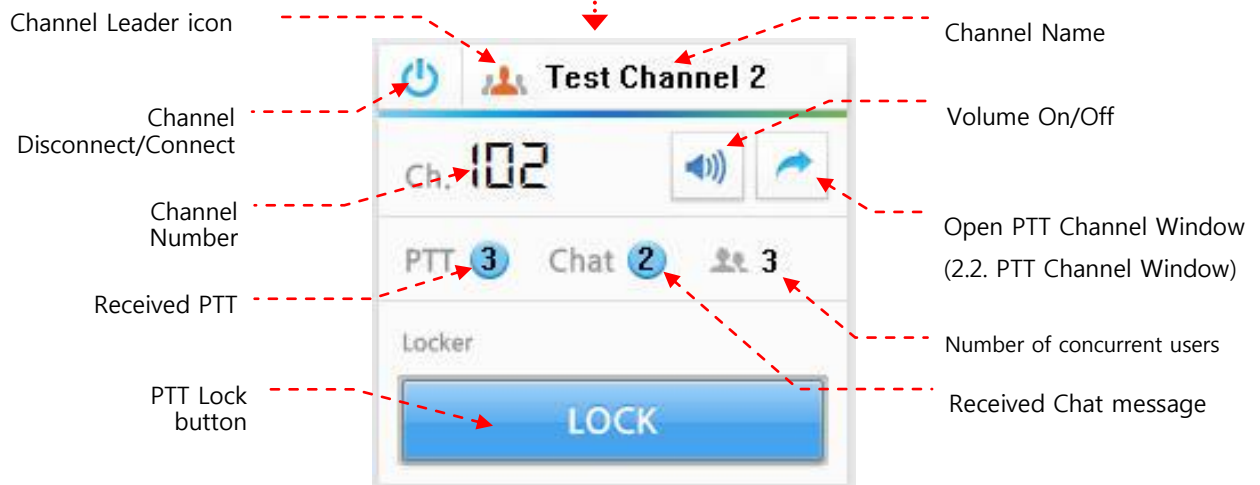
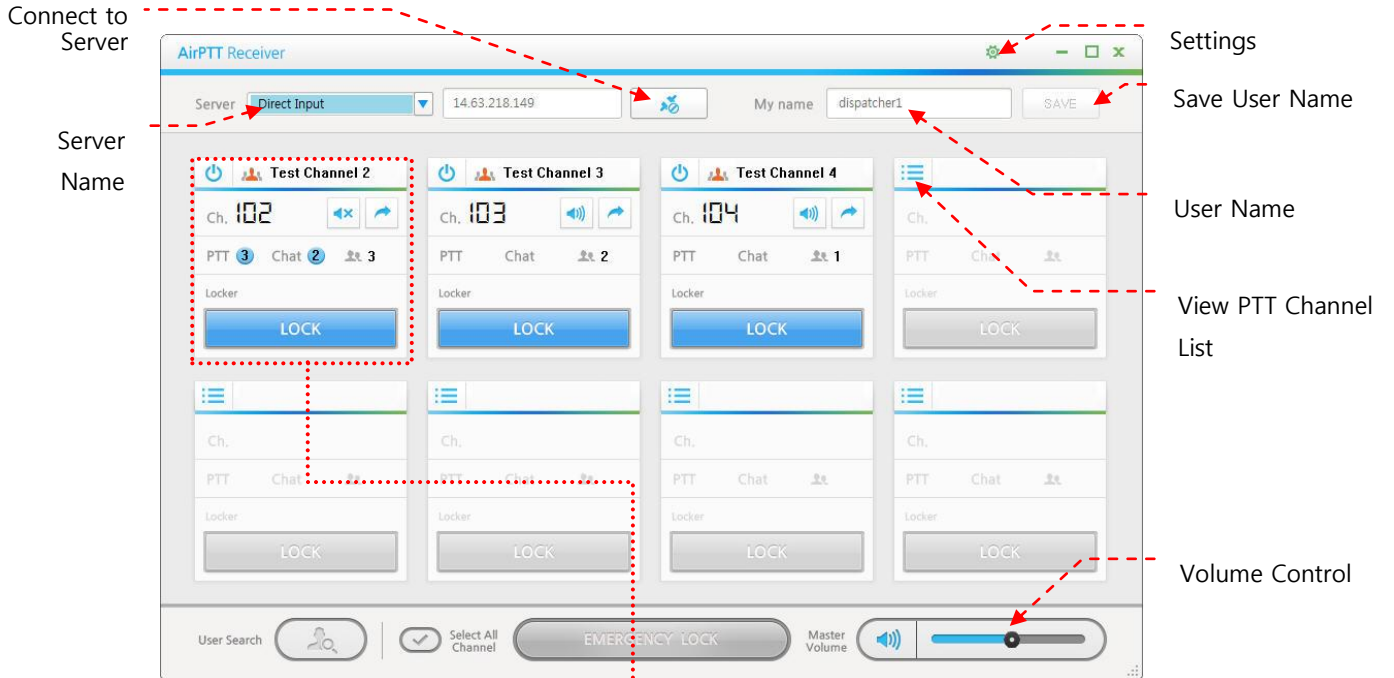
[AirPTT - logo]



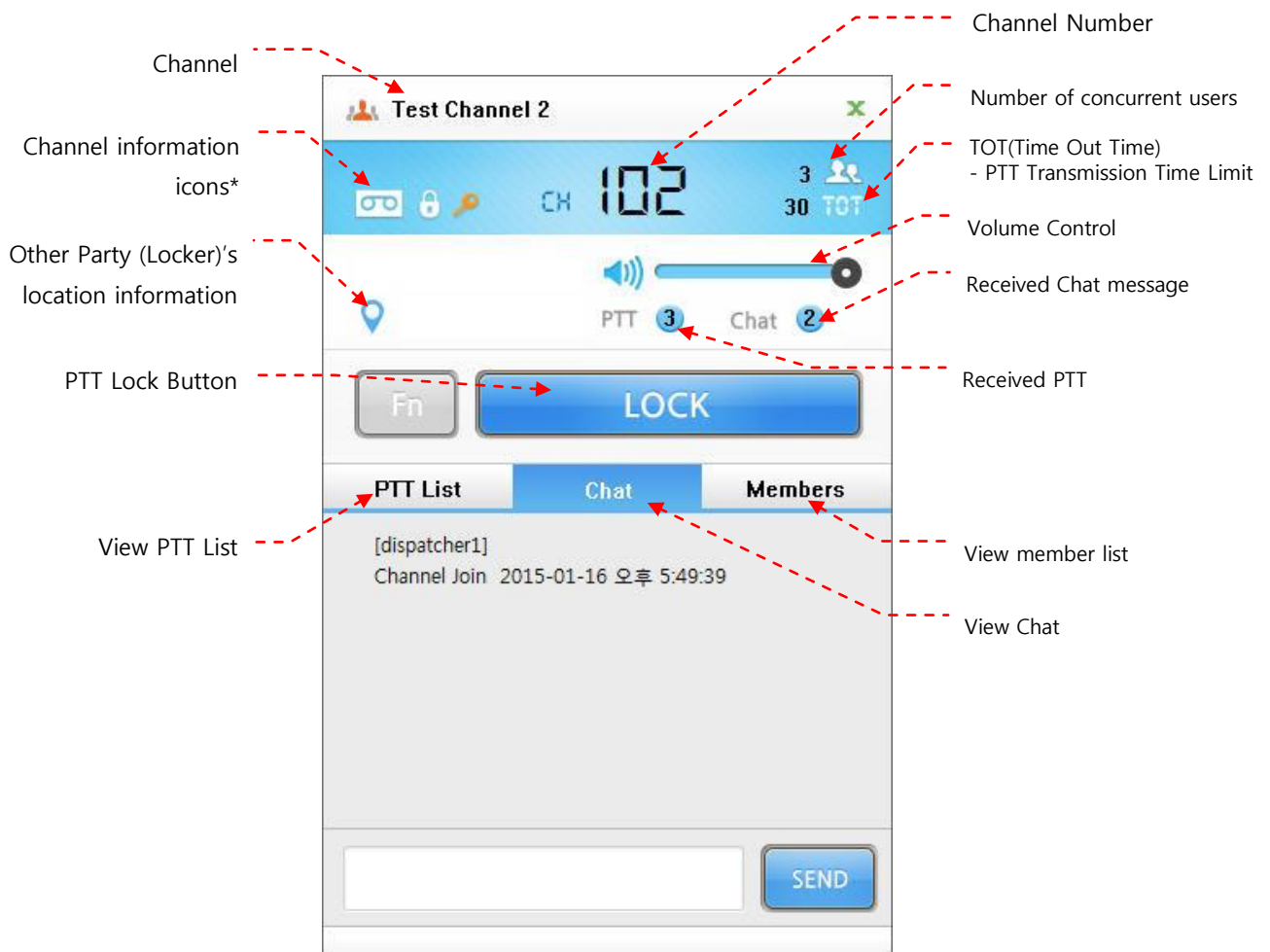
[AirPTT PC Receiver – Windows Application GUI]

2. AirPTT PC Receiver Overview

2.1. Main Window



2.2. PTT Channel Window



* Channel information icons



Current channel records received and transmitted PTT between users.



Current channel is a secret channel that needs password when connecting.




Current channel is a security channel that PTT is encoded.



Limit time that can transmit PTT by pushing Lock button with the function of [Time Out Timer, PTT Transmission Time Limit]. Figures refer to transmission limit time (sec). If this icon does not show, there is no limit of PTT transmission time.

3. How to Use AirPTT PC Receiver

3.1. Installing AirPTT PC Receiver

Go to AirPTT website (www.airptt.com) and click Download > PC Receiver on footer or click  on the left side of the site. Then you can see the introducing page as below. Click [PC Receiver DOWNLOAD] to download the install file.



Double-click the file (.exe), and follow the on-screen instructions.

- ① Click [Next] to continue.
- ② Click [Next] to continue.
- ③ Enter a name of the shortcut on Start Menu folder and click [Next] to continue.
- ④ Check installation settings for AirPTT PC Receiver, and click [Next].
- ⑤ AirPTT PC Receiver is installing on your computer
- ⑥ AirPTT PC Receiver installed successfully. Click [Finish] to complete the installation..

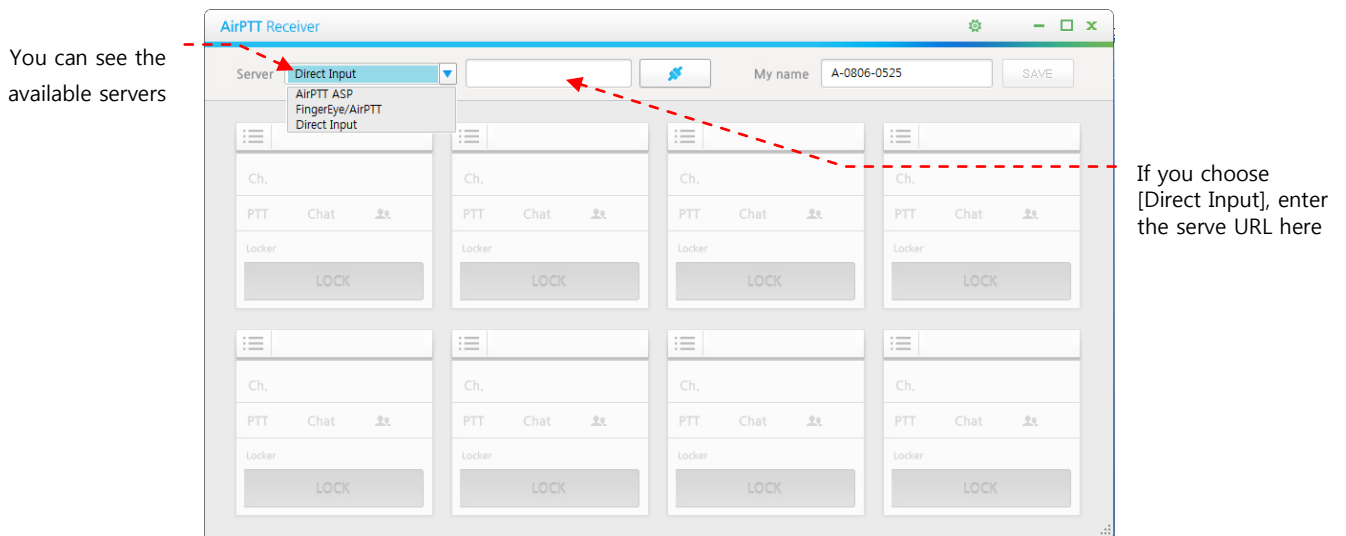
3.2. Setting Service Server – Normal User

Once you execute AirPTT Receiver after installation, you can see the window as below.

First click the server list box to see the available server list. Click a server you want to access.

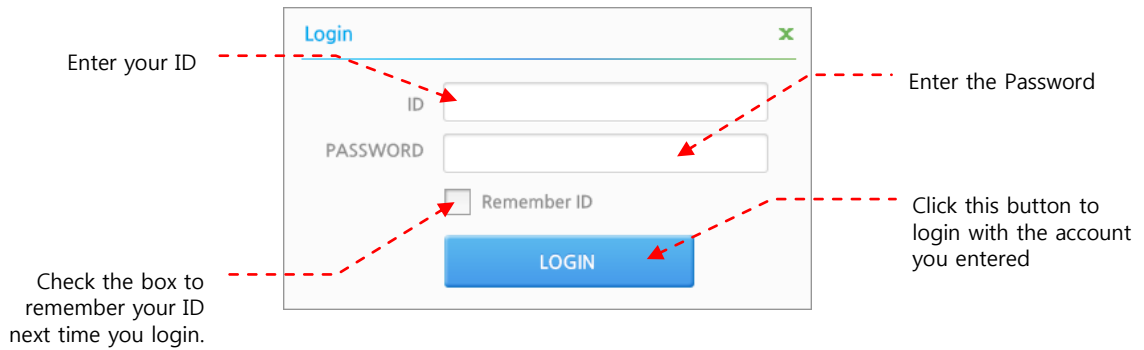
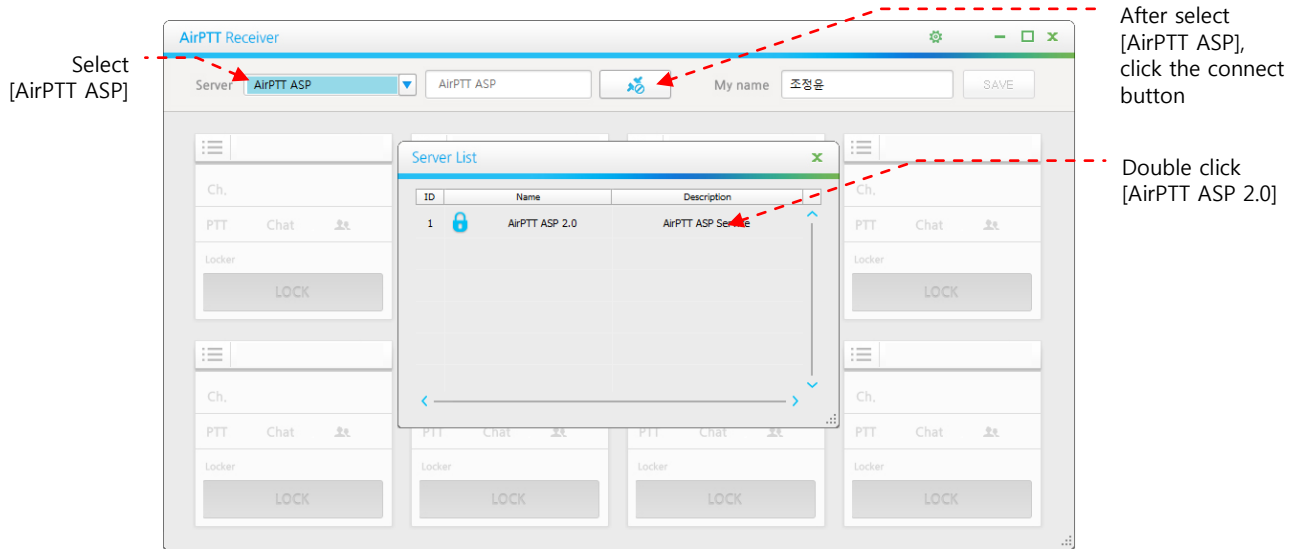
Choose [Direct Input] to input the server URL directly on the right box.

Click the server connect button after you choose the server on the list or directly input a server URL.



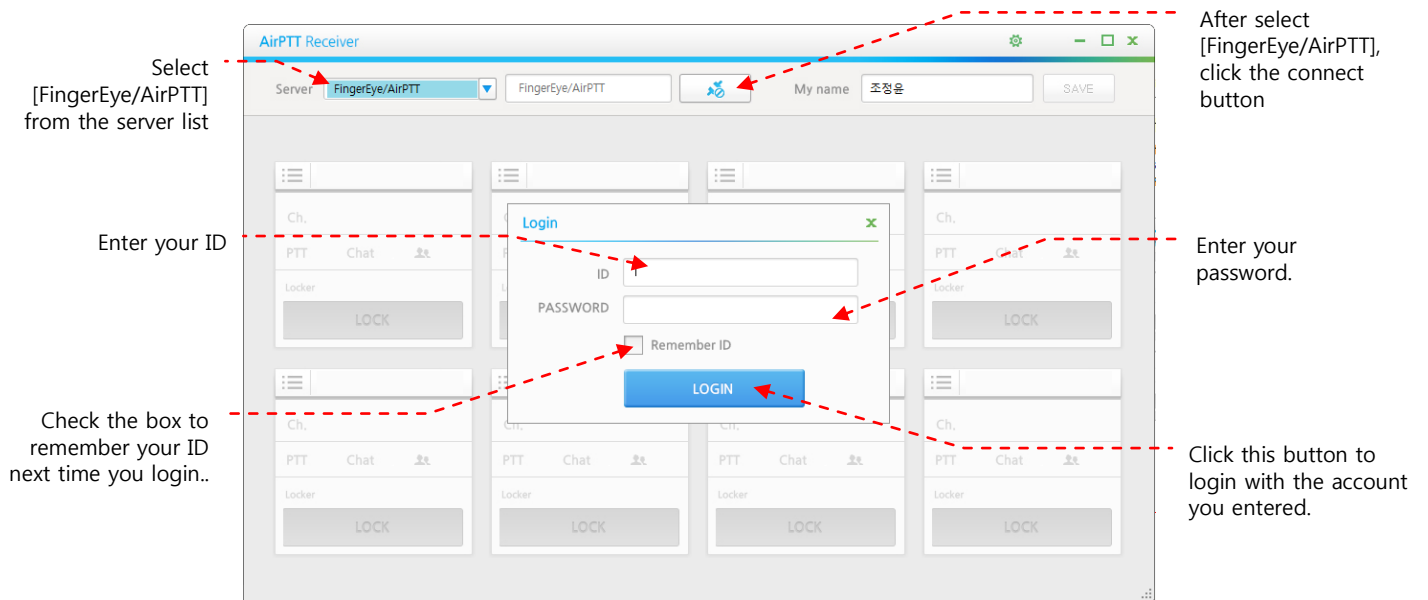
3.3. Setting Service Server – ASP User

1. Select [AirPTT ASP] from the server list and click the connect button on the right.
2. The server list pop-up will open.
3. Double click [AirPTT ASP 2.0]
4. Login with your ID and password that received when you registered the ASP service.

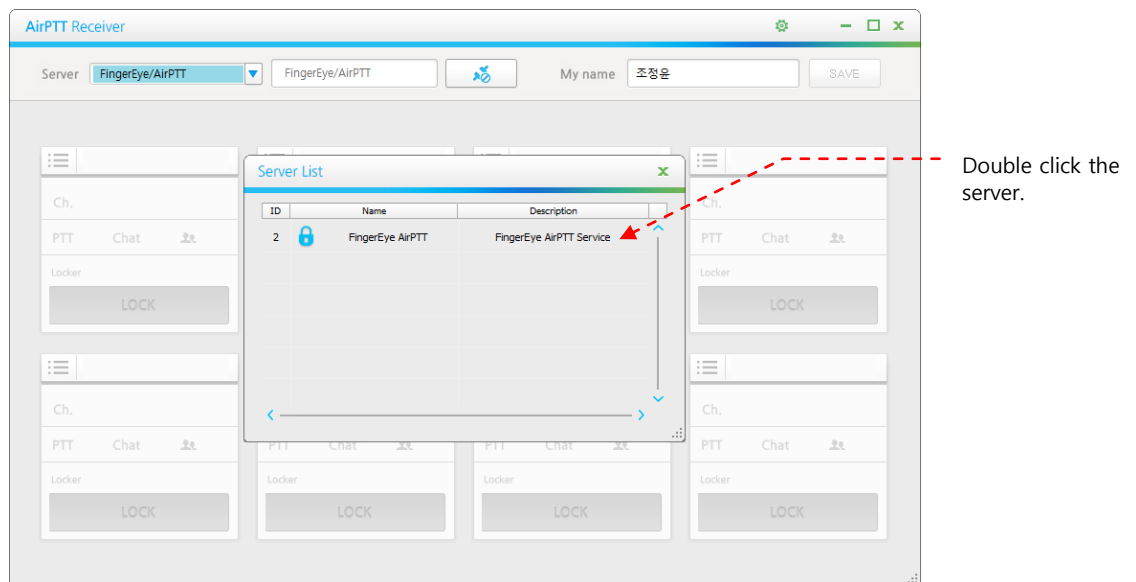


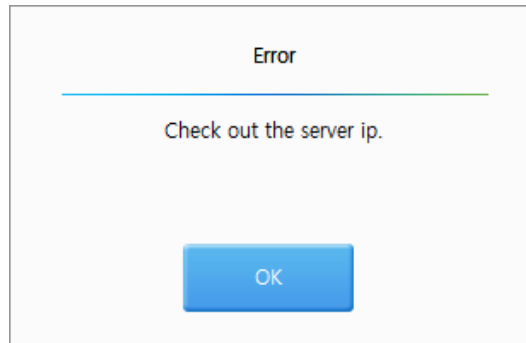
3.4. Setting Service Server – FingerEye/AirPTT(Dedicated Server) User

1. Select [FingerEye/AirPTT] from the server list and click the connect button on the right.
2. Login pop-up will open. 3. Enter your account to login



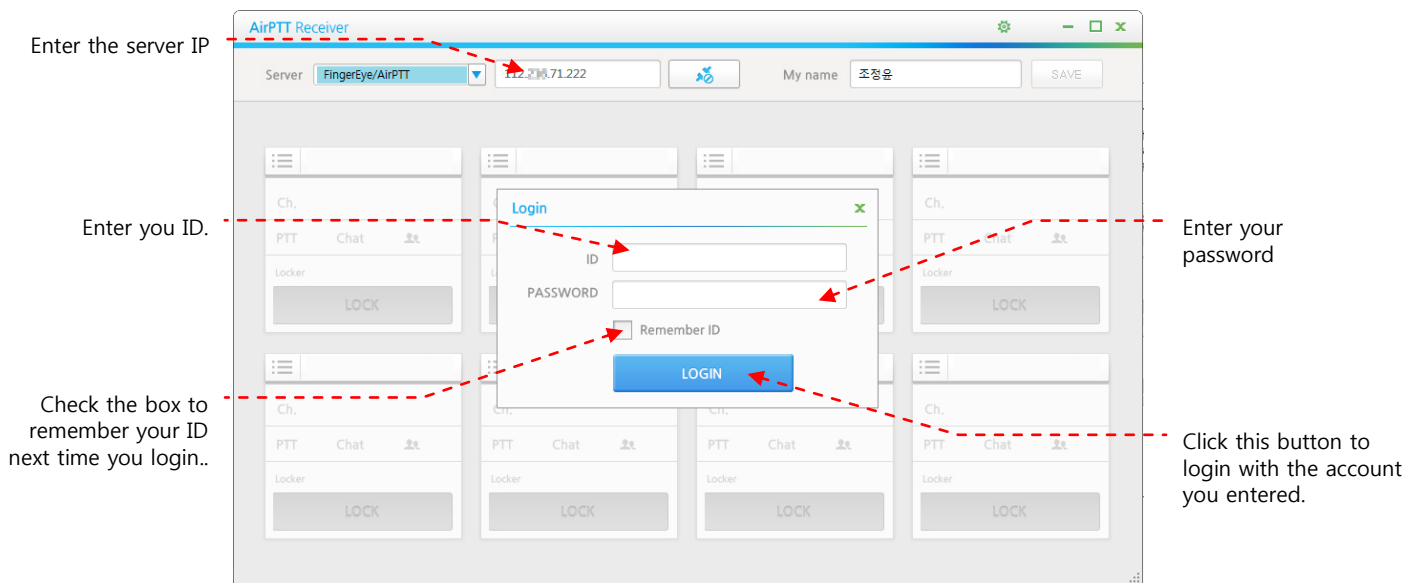
Server List popup will open after you login successfully.





If the server is not connected, an error message pop-up as above will appear. (Check out the server IP.)

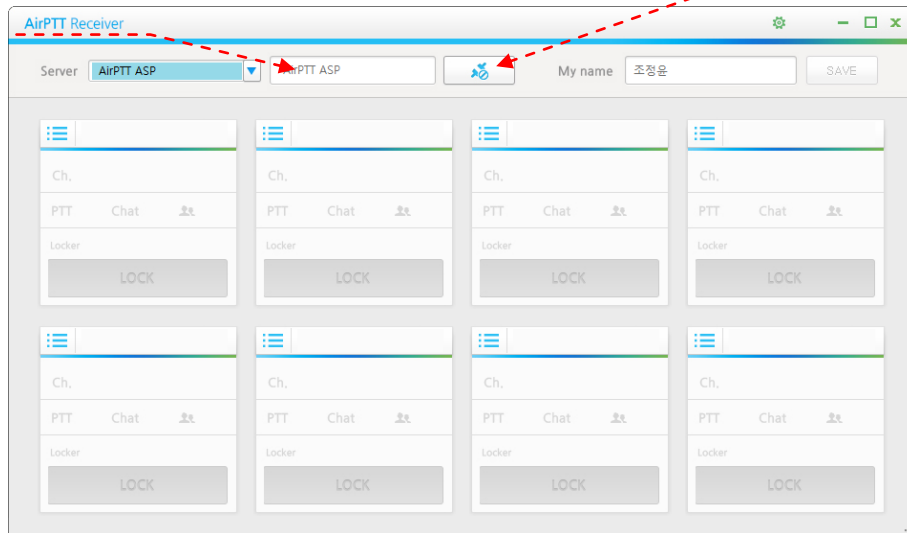
This connection failure occurs when the host setting is not on the DNS server. Please enter the server address directly as below and try login with your account. (If you do not know your server address, please contact your administrator.)




3.5. Connecting to Service Server


You can disconnect to server that you are using or you can connect to the server again.

Show the name of server that is now connected to.




Disconnect or Reconnect to a server.

If the server you chose is normally connected, a button changes to  . You can disconnect to the server that you are now using.

If a server is not connected, a button changes to  . You can try it again by pushing a button.

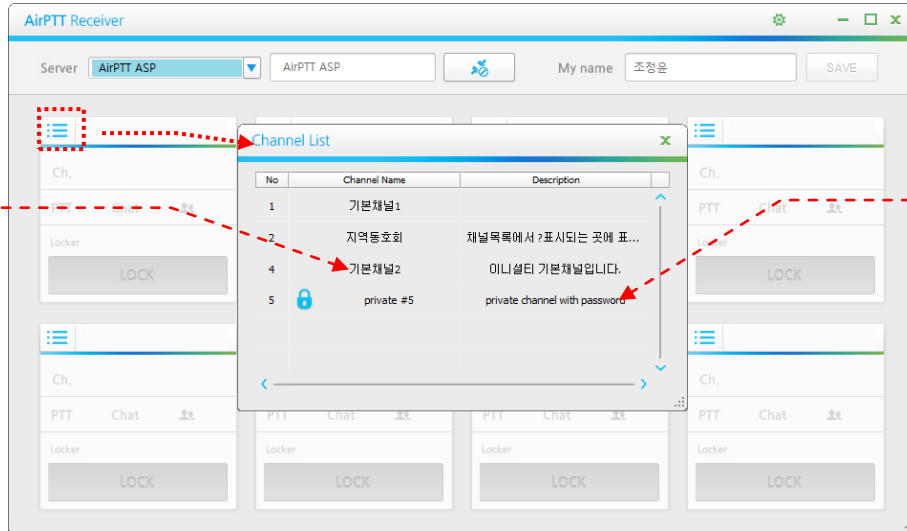
3.6. Connecting to PTT Channel

You can check PTT channel that is generated in service server by pushing  button.

Click this button to view the PTT channel list

Show all PTT channel list that is generated in server

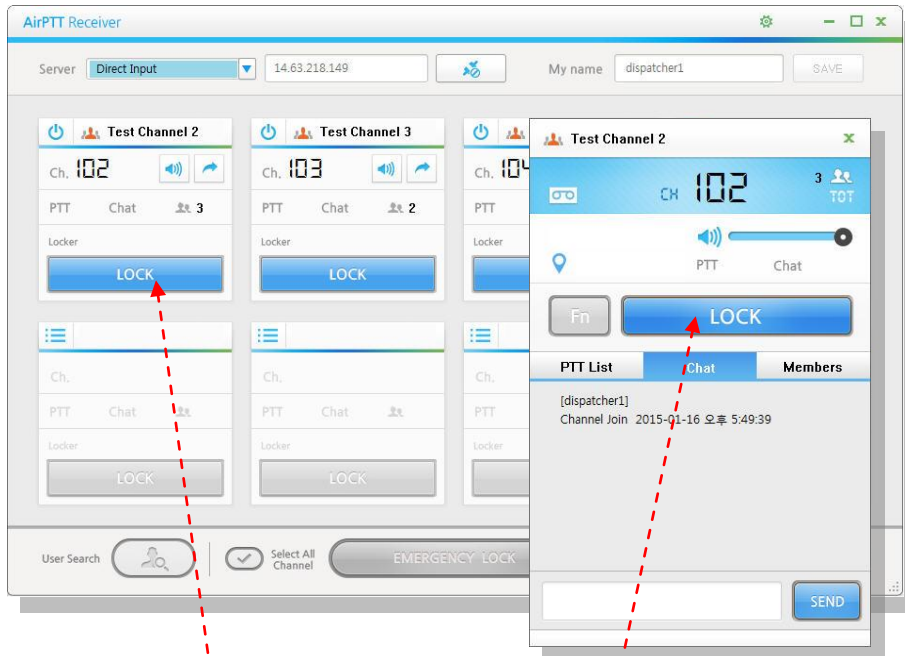
Double click a channel you want.



Show detailed information of PTT channel.

3.7. Transmit and Receive PTT

Say something by clicking and holding PTT Lock button to transmit PTT to the other party!
(Hold Lock Button and Talk)



PTT Lock Button

Click PTT Lock and say it

In case of receiving PTT from the other party, voice replay of the other party and its location information is also showed.

- Color of PTT Lock button changes according to PTT transmission and reception status.

(1) Unlock by Me (Locked by Other)
It is a basic status to transmit PTT or receive PTT from the other party.
At this time, click a button and say it with the status that changes the color from (2) to (3)

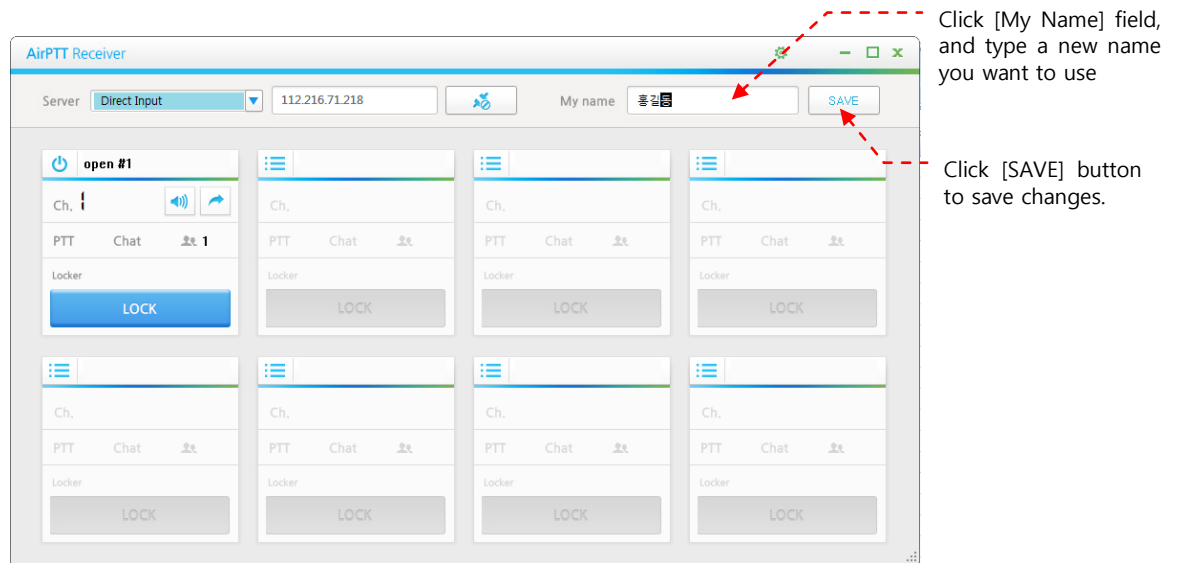
(2) Requesting Lock
Once its request to transmit PTT is completed, its status changes to (3).

(3) Locked by Me
If you click PTT Lock button and say it with the status when the color changes to blue, PTT is transmitted to the other party.

(4) Disable
It is a status that you cannot transmit or receive PTT.
(Status that is not connected to service server)

3.8. Change User Name

You can change a user's name (My Name). (Possible to input up to 50 characters)



3.9. Emergency Lock

Using [Emergency Lock] button, you can transmit priority PTT or transmit PTT to all channels you connected. This button preferentially transmit the PTT even during PTT transmission / reception.

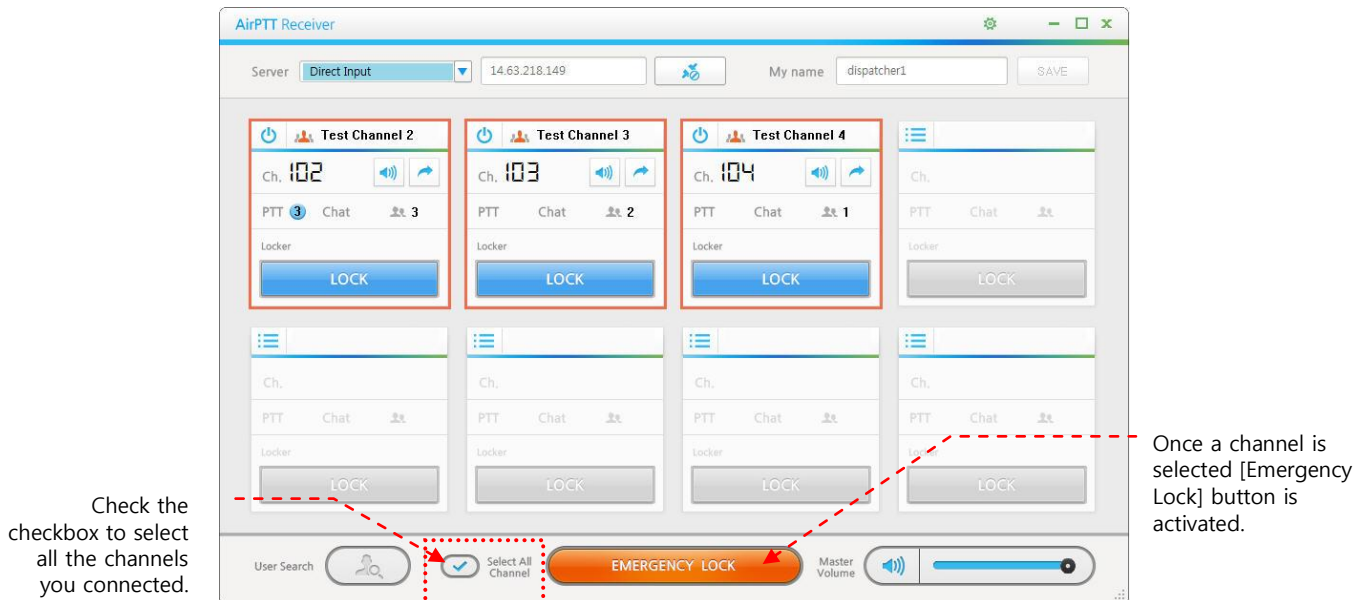
※ These features are only available to user who have the role of channel leader.

(1) Priority PTT



Click a channel box. When a channel selected, a red border appears on the channel box. When you select channels, hold down the [Ctrl] key, you can select multiple channels at once. When [Emergency Lock] button is activated, click the button and say into mic. Even during PTT transmission / reception your PTT will send first.



(2) Transmit PTT to all channel



When [Select All Channel] is checked, all channels that are currently connected is selected and red borders will appear to all channels are selected. After the channel selection, click the [Emergency Lock] button, you can transmit the PTT to all channels selected.

3.10. Chat



AirPTT Receiver provides a chat service that users who connect to the same channel can exchange text messages.


If you are out of [Chat] screen,  badge that displays numbers according to the number of messages that the other party received is shown beside  [Chat]

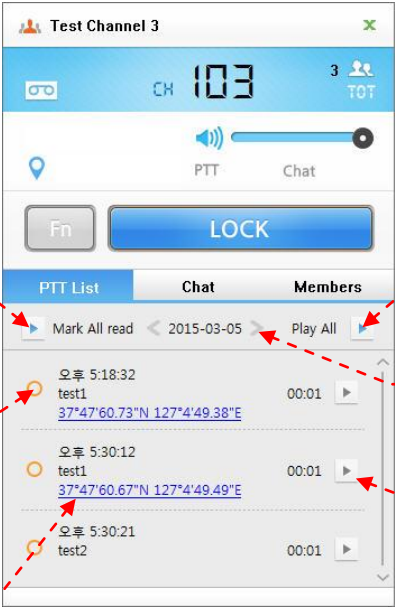


3.11. View PTT List (History)

PTT which is a user receives is recorded and stored in PTT list. You can replay it from PTT list. (Available in channel which records received and transmitted PTT between users.)

In case volume value is 0 by controlling volume bar or this is vibration and mute mode,  badge that displays the number according to the number of PTT that is received from the other party is shown beside  [PTT] button.

If you click  button, [PTT List] is shown as below.



Click [Mark All read] to remove all badges from PTT button.

Replay all PTT shown in list in order.

Click < and > movement button and Select the date that you will inquire into.

click (▶) button to replay PTT
You can stop replaying by pause (||) button.

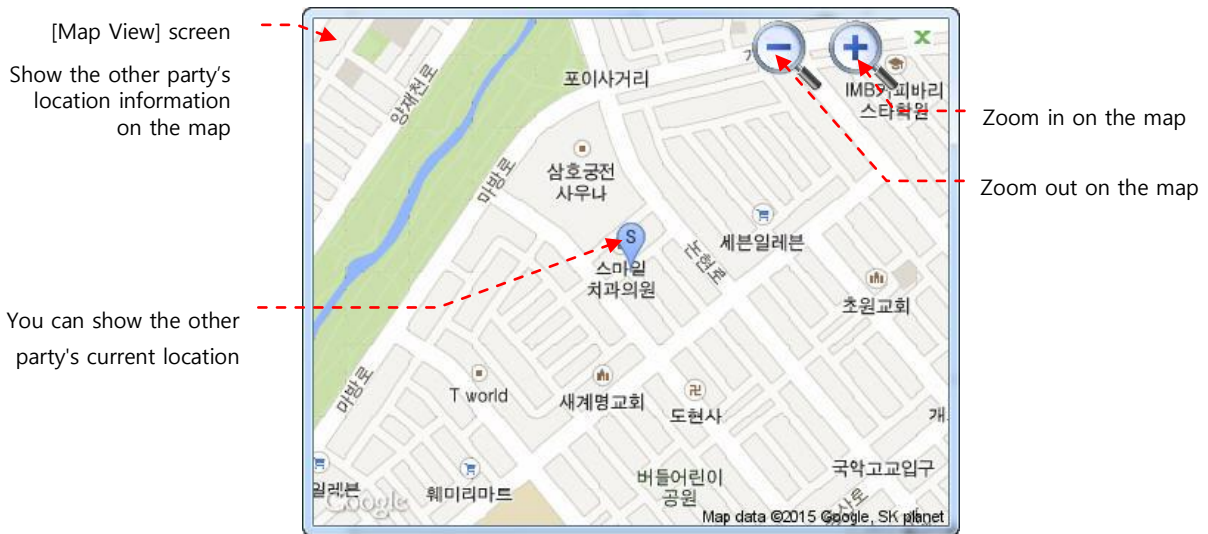
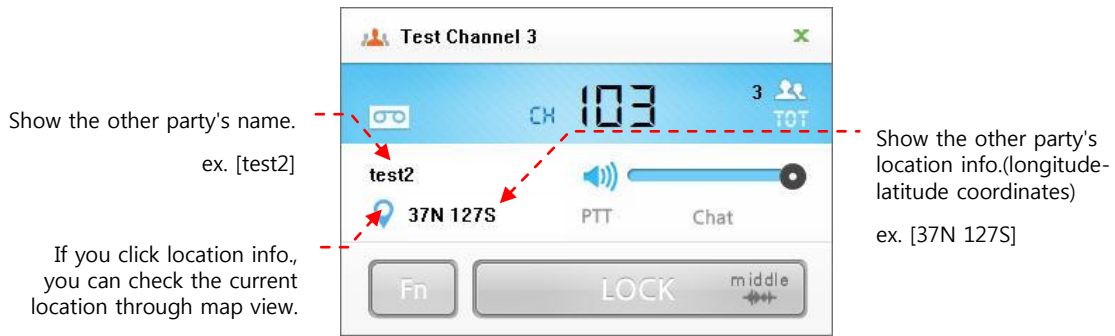
Show reception time, channel name, the other party's name and location info.

If you click location info., you can check the other party's location through map view..

3.12. Check other 's Location

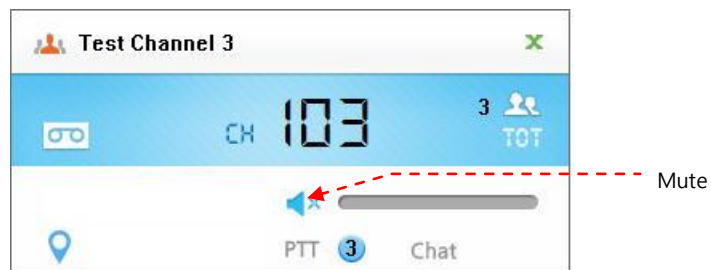
When you receive PTT from the other party, the name and location information of the other party are shown while hearing his/her voice.

If you click location information displayed in Channel window, you can see the current location of the other party through Map View (Google Map).



3.13. Volume Control

You can control volumes by moving a volume bar.



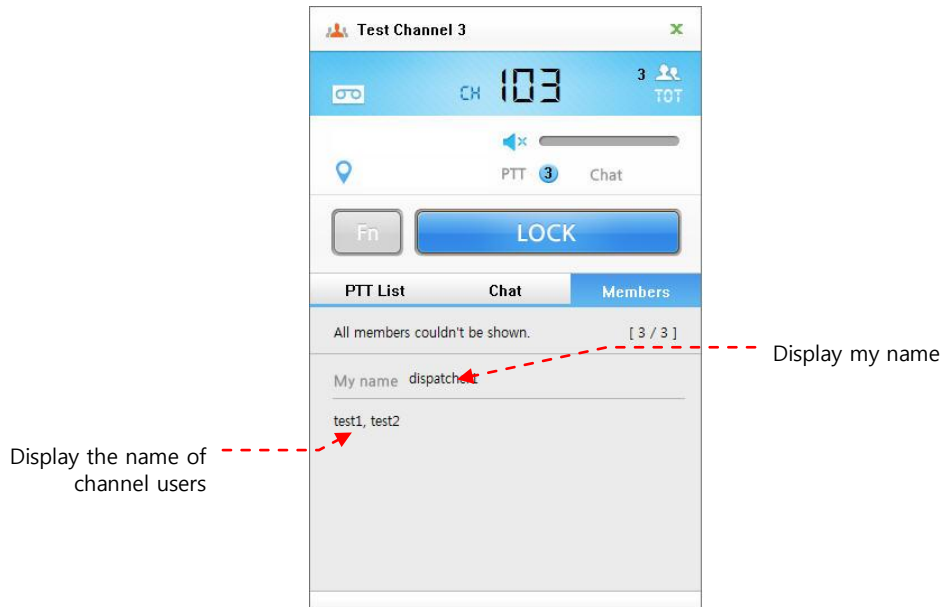
In case of becoming mute by moving its volume bar to the left side (volume value=0),

3 badge that displays numbers is shown once you receive PTT from the other party.


3.14. PTT User List

You can check users that connect to the same channel on [Members] tab.

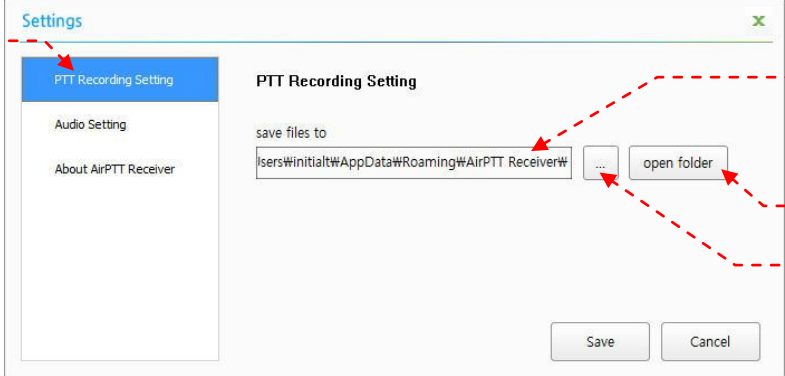
(However, all users may not be displayed.)



3.15. Settings

If you click  button, the following [Settings] window will appear.

PTT Recording Setting

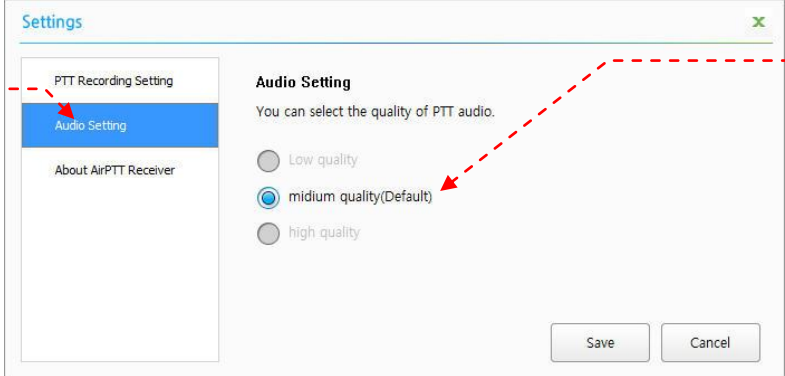


Save directory of received PTT file.

Open the folder

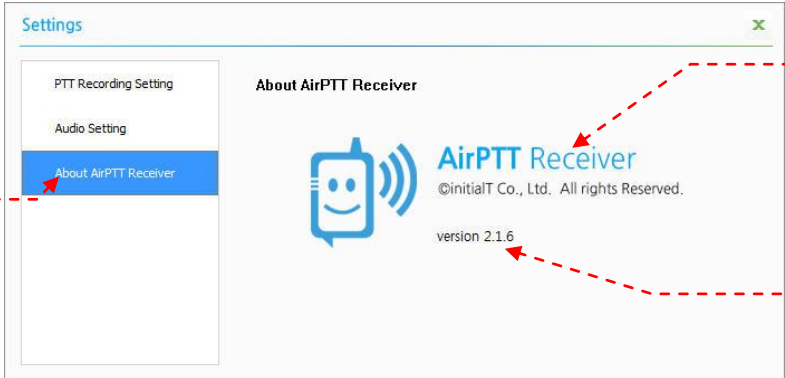
Browse for folder

Audio Setting



Set audio quality

AirPTT Receiver Information



Program information

Application version

4. FAQ

4.1. Service Server, PTT Channel

- When I search service servers, I couldn't see our company's server.
 - It may be because the service server is not installed or you have a server connection problem. Please ask your company's server manager.
- Who is issuing ID and Password that I can connect to a secret server?
 - Company's server manager handles secret server related matters. Please ask your company's server manager.
- How can I set password that I can connect to a secret channel?
 - Company's server manager handles secret channel related matters. Please ask your company's server manager.

4.2. etc.

- I cannot see the other party's location information as I receive PTT.
 - It is because the other party sets [Option-Whether or not to use GPS] as [No].
- What is the maximum number of characters to create a user's name?
 - You can create a user's name up to 50 characters.

4.3. AirPTT Customer Center

- e-mail : app.initialt@gmail.com

The ownership and copyright of this document belongs to initialT.

All or part of this document is protected by copyright law.

It must not be disclosed, copied, translated, altered or used without written permission of initial T.



initialT Co., Ltd. 137-895 Duksan Bldg 4fl 279 Yangjae-dong Seocho-gu Seoul Korea

© 2015 All rights reserved | **initialT** · evolved Communication Solution Group