



LAN10257HR

5-Port Gigabit Ethernet Unmanaged Switch

User's Manual

BDM-610020112 Rev. C



RTD Embedded Technologies, Inc.

103 Innovation Boulevard
State College, PA 16803 USA
Telephone: 814-234-8087
Fax: 814-234-5218

www.rtd.com

sales@rtd.com
techsupport@rtd.com



Revision History

Rev A	Initial Release	12/19/2013
Rev B	Updated power specifications, added input power protection and jumbo frame support	8/26/2014
Rev C	Added DIL pin out tables, added MTBF, updated trademark info	7/30/2015

Advanced Analog I/O, Advanced Digital I/O, aAIO, aDIO, a2DIO, Autonomous SmartCal, "Catch the Express", cpuModule, dspFramework, dspModule, expressMate, ExpressPlatform, "MIL Value for COTS prices", multiPort, PlatformBus, and PC/104EZ are trademarks, and "Accessing the Analog World", dataModule, IDAN, HiDAN, HiDANplus, RTD, and the RTD logo are registered trademarks of RTD Embedded Technologies, Inc. (formerly Real Time Devices, Inc.). PS/2 is a trademark of International Business Machines Inc. PCI, PCI Express, and PCIe are trademarks of PCI-SIG. PC/104, PC/104-Plus, PCI-104, PCIe/104, PCI/104-Express and 104 are trademarks of the PC/104 Consortium. All other trademarks appearing in this document are the property of their respective owners.

Failure to follow the instructions found in this manual may result in damage to the product described in this manual, or other components of the system. The procedure set forth in this manual shall only be performed by persons qualified to service electronic equipment. Contents and specifications within this manual are given without warranty, and are subject to change without notice. RTD Embedded Technologies, Inc. shall not be liable for errors or omissions in this manual, or for any loss, damage, or injury in connection with the use of this manual.

Copyright © 2015 by RTD Embedded Technologies, Inc. All rights reserved.

Table of Contents

1	Introduction	6
1.1	Product Overview	6
1.2	Board Features	6
1.3	Ordering Information	6
1.4	Contact Information	7
1.4.1	Sales Support	7
1.4.2	Technical Support	7
2	Specifications	8
2.1	Operating Conditions	8
2.2	Electrical Characteristics	8
3	Board Connection	9
3.1	Board Handling Precautions	9
3.2	Physical Characteristics	9
3.3	Connectors and Jumpers	10
3.3.1	External I/O Connectors and Jumpers	10
3.3.2	RJ45 Twisted Pair Ethernet CN5, CN7, CN9, CN11, and CN16	10
3.3.3	Twisted Pair Ethernet CN4, CN6, CN8, CN10, and CN13	11
3.3.4	Status LEDs	11
3.3.5	External Status LED Connectors CN14, CN15, CN18, CN19, and CN20	12
3.3.6	CON1 and CON2 Power Connectors	12
3.4	Steps for Installing	13
4	Functional Description	14
4.1	Block Diagram	14
4.2	BroadCom Gig-Ethernet Switch	14
4.3	Jumbo Frame Support	14
4.4	Onboard LEDs and External LED Connectors	14
5	IDAN® Connections	15
5.1	Module Handling Precautions	15
5.2	Physical Characteristics	15
5.3	IDAN® Connector Location	16
5.4	IDAN-LAN10257HR	16
5.5	IDAN® Twisted Pair Ethernet P1, P2, P3, P4, and P5	16
5.6	Steps for Installing	17
6	Troubleshooting	18
7	Additional Information	19
7.1	PC/104 Specifications	19
8	Limited Warranty	20

Table of Figures

Figure 1: Board Dimensions	9
Figure 2: LAN10257HR Board Connections.....	10
Figure 3: RJ-45 Jack Connector	11
Figure 4: Example 104™ Stack	13
Figure 5: LAN10257HR Block Diagram	14
Figure 6: IDAN® Dimensions.....	15
Figure 7: IDAN® Connector Location	16
Figure 8: IDAN-LAN10257HR Rear View	16
Figure 9: IDAN-LAN10257HR Front View	16
Figure 10: Example IDAN® System	17

Table of Tables

Table 1: Ordering Options	6
Table 2: Operating Conditions	8
Table 3: Electrical Characteristics	8
Table 4: RJ45 Signal Assignments	11
Table 5: DIL Signal Assignments.....	11
Table 6: DIL pin out looking into connector	11
Table 7: Status LEDs	11
Table 8: CN14, CN15, CN18, CN19, and CN20 External LED	12
Table 9: External LED pin out looking into connector.....	12
Table 10: LAN10257HR IDAN® Pin Out	17

1 Introduction

1.1 Product Overview

The LAN10257HR is designed to provide five Gigabit Ethernet switch ports for expanding the networking capabilities of any system. The board can be used either in a PC/104 system or as a standalone module. It gets power from either an external Vin of 7.5 – 36 volts or external 5 VDC. There are no bus connectors on the board.

The LAN10257HR provides five RJ45 ports with auto-configuration so any of the ports can be the upstream port and the reset will then be downstream ports. It has standard PC/104 mounting holes to enable stacking in any PC/104 architecture system.

1.2 Board Features

- BroadCom BCM53115 Gigabit Ethernet Switch:
 - 5 Full Duplex Unmanaged Gigabit Ethernet Ports
 - Auto configuration means any of the ports can be the uplink and the rest will be downlinks
 - Any port can be the uplink, remaining links will be downlinks.
 - Ports have automatic MDI crossover to eliminate the need for crossover cables
 - Supports Jumbo frames up to 9720 bytes
 - Link/Activity LEDs or connectors
 - Power LED
 - Industrial Temperature rated: -40 to +85 C
- Power input options
 - +7.5 to 36 volts DC CON1 (protected against surges and reverse power)
 - OR
 - +5.0 volts DC on CON2

1.3 Ordering Information

The LAN10257HR is available with the following options:

Table 1: Ordering Options

Part Number	Description
LAN10257HR	Standalone 5 port Gigabit Ethernet Switch
IDAN-LAN10257HR	Standalone 5 port Gigabit Ethernet Switch in IDAN® enclosure

The Intelligent Data Acquisition Node (IDAN®™) building block can be used in just about any combination with other IDAN® building blocks to create a simple but rugged 104™ stack. This module can also be incorporated in a custom-built RTD HIDAN®™ or HiDANplus® High Reliability Intelligent Data Acquisition Node. Contact RTD sales for more information on our high reliability systems.

1.4 Contact Information

1.4.1 SALES SUPPORT

For sales inquiries, you can contact RTD Embedded Technologies sales via the following methods:

Phone: 1-814-234-8087 Monday through Friday, 8:00am to 5:00pm (EST).
E-Mail: sales@rtd.com

1.4.2 TECHNICAL SUPPORT

If you are having problems with your system, please try the steps in the Troubleshooting section of this manual.

For help with this product, or any other product made by RTD, you can contact RTD Embedded Technologies technical support via the following methods:

Phone: 1-814-234-8087 Monday through Friday, 8:00am to 5:00pm (EST).
E-Mail: techsupport@rtd.com

2 Specifications

2.1 Operating Conditions

Table 2: Operating Conditions

Symbol	Parameter	Test Condition	Min	Max	Unit
V _{in}	DC power supply input	Supplied to CON1	7.5	36	V
+5V	+5V power supply input	Supplied to CON2	4.75	5.25	V
T _a	Operating Temperature		-40	+85	C
T _s	Storage Temperature		-55	+125	C
RH	Relative Humidity	Non-Condensing	0	90%	%
MTBF	Mean Time Before Failure	LAN10257HR, 30°C	2,901,428		Hours
MTBF	Mean Time Before Failure	IDAN-LAN10257HR, 30°C	2,789,970		Hours

2.2 Electrical Characteristics

Table 3: Electrical Characteristics

Symbol	Parameter	Test Condition	Min	Typ.	Max	Unit
Power V _{in}	Power Consumption	CON1 = 7.5 – 36, CON2 = Not connected 0 ports connected 1 port connected 2 ports connected 3 ports connected 4 ports connected 5 ports connected		1.2 1.5 1.9 2.0 2.0 2.1		W
Power +5V	Power Consumption	CON1 = Not connected, CON2 = +5.0V 0 ports connected 1 port connected 2 ports connected 3 ports connected 4 ports connected 5 ports connected		1.0 1.4 1.9 2.0 2.0 2.1		W

3 Board Connection

3.1 Board Handling Precautions

To prevent damage due to Electrostatic Discharge (ESD), keep your board in its antistatic bag until you are ready to install it into your system. When removing it from the bag, hold the board at the edges, and do not touch the components or connectors. Handle the board in an antistatic environment, and use a grounded workbench for testing and handling of your hardware.

3.2 Physical Characteristics

- Weight: Approximately 55 g (0.12 lbs.)
- Dimensions: 107.33 mm L x 90.17 mm W (4.2250 in L x 3.5500 in W)

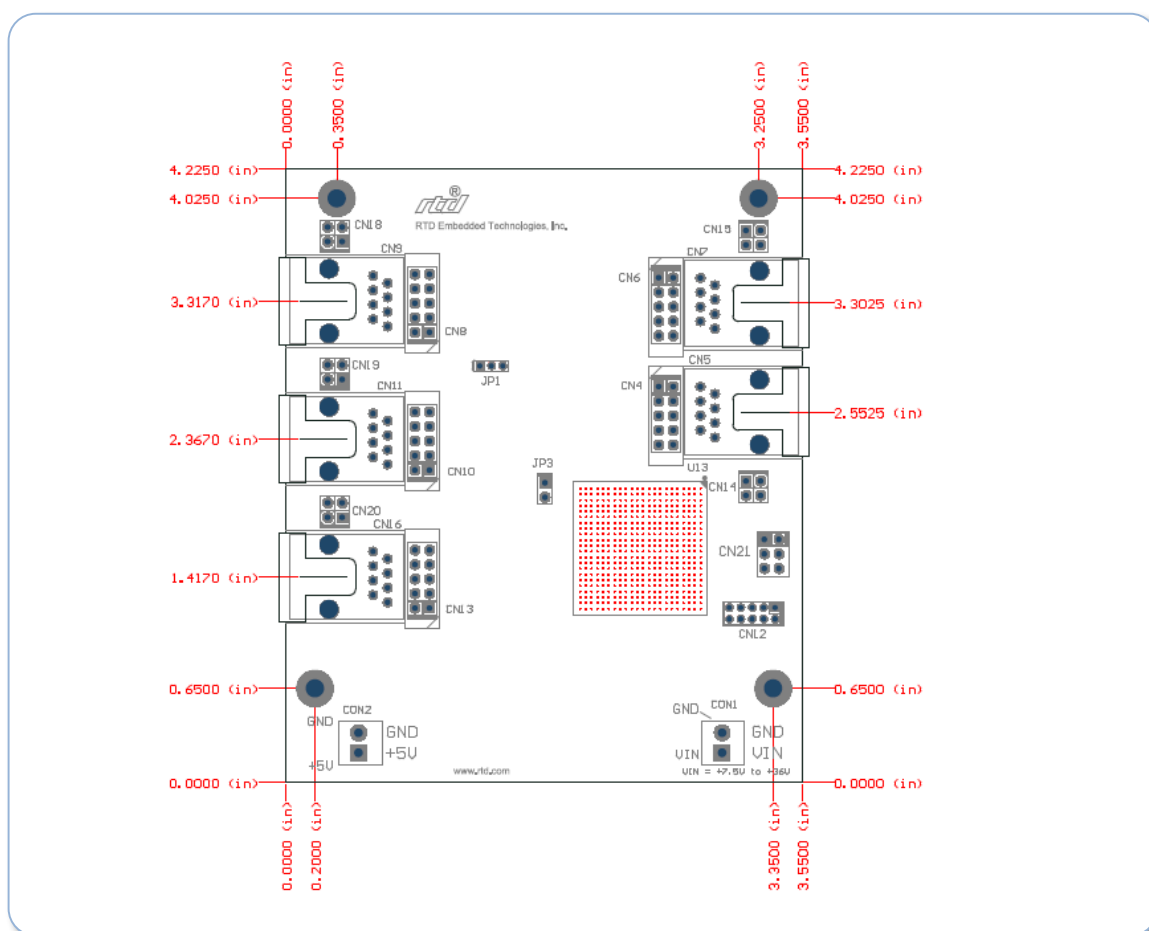


Figure 1: Board Dimensions

3.3 Connectors and Jumpers

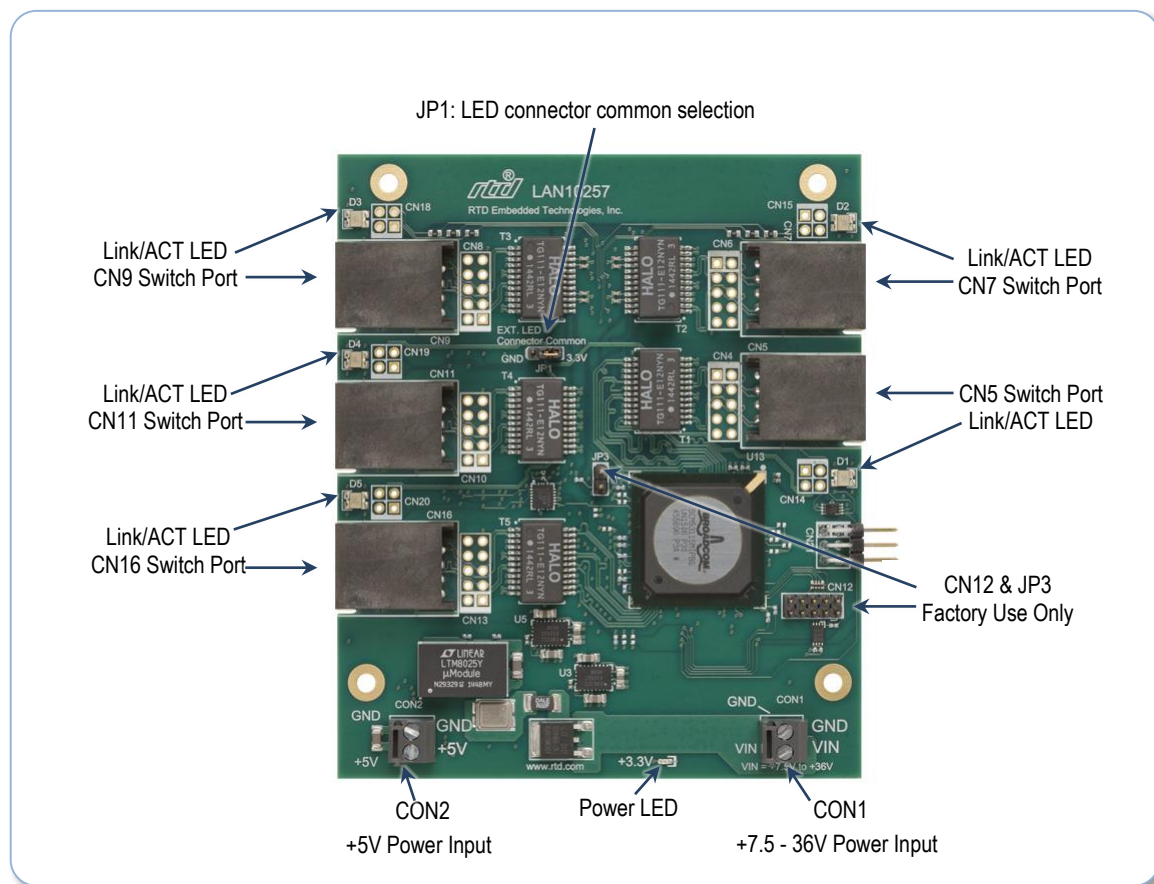


Figure 2: LAN10257HR Board Connections

3.3.1 EXTERNAL I/O CONNECTORS AND JUMPERS

- CN5, CN7, CN9, CN11, & CN16: RJ-45 connectors for Ethernet
- CN4, CN6, CN8, CN10, & CN13: 2x5 0.1" DIL connector not populated in standard product. Used for bringing out the Ethernet ports in IDAN®, HIDAN®, and HiDANplus® systems.
- CN14, CN15, CN18, CN19, & CN20: External LED connectors not populated in standard product. Used for bringing out the Ethernet port LED signals in IDAN®, HIDAN®, and HiDANplus® systems.
- JP1: Power/ground selector for external LED connectors CN14, CN15, CN18, CN19, & CN20
- CON1: +7.5 to 36 volt power input connector
- CON2: +5.0 volt power input connector
- CN12 & JP3: Factory use only. Leave open.

3.3.2 RJ45 TWISTED PAIR ETHERNET CN5, CN7, CN9, CN11, AND CN16

Connectors CN5, CN7, CN9, CN11, and CN16 are for UTP (Unshielded Twisted Pair) wiring normally used for 10/100/1000 Base-T Ethernet. It is the default factory installed twisted pair connector on the board. The following table gives the pin out of CN5, CN7, CN9, CN11, and CN16.

Pin	1000 Mbps Function	10/100 Mbps Function
1	MDI_A+	Transmit +
2	MDI_A-	Transmit -
3	MDI_B+	Receive +
4	MDI_C+	Not Used
5	MDI_C-	Not Used
6	MDI_B-	Receive -
7	MDI_D+	Not Used
8	MDI_D-	Not Used

Table 4: RJ45 Signal Assignments

CN5, CN7, CN9, CN11, and CN16 are standard female RJ-45 connectors. The figure below shows the pin numbering when **looking into the connector**:

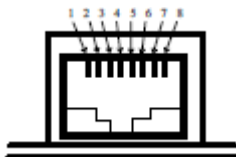


Figure 3: RJ-45 Jack Connector

3.3.3 TWISTED PAIR ETHERNET CN4, CN6, CN8, CN10, AND CN13

CN4, CN6, CN8, CN10, and CN13 are optional connectors which can be factory installed in place of the RJ45 connector. These connectors can be connected to a 9-pin "D" connector using ribbon cable. The pin out of CN4, CN6, CN8, CN10, and CN13 is in the table below.

10-pin DIL	1000 Mbps Function	10/100 Mbps Function	9-Pin "D"
1	MDI_B+	Receive +	1
2	MDI_B-	Receive -	6
3	MDI_C+	Not Used	2
4	MDI_C-	Not Used	7
5	MDI_A+	Transmit +	3
6	MDI_A-	Transmit -	8
7	MDI_D+	Not Used	4
8	MDI_D-	Not Used	9
9	Shield		5
10	Shield		N/C

Table 5: DIL Signal Assignments

9	7	5	3	1
Shield	MDI_D+	MDI_A+	MDI_C+	MDI_B+
Shield	MDI_D-	MDI_A-	MDI_C-	MDI_B-
10	8	6	4	2

Table 6: DIL pin out looking into connector

3.3.4 STATUS LEDs

The tri-color LEDs on the board are used to indicate the status of the Ethernet ports.

LED Color	Description
Off	No Link
Green	Link at 1000 Mbps
Blue	Link at 100 Mbps
Red	Link at 10 Mbps
Any color blinking	Activity

Table 7: Status LEDs

3.3.5 EXTERNAL STATUS LED CONNECTORS CN14, CN15, CN18, CN19, AND CN20

CN14, CN15, CN18, CN19, and CN20 are the status LED signals that are buffered and able to source or sink 24 mA. Additionally, JP1 can select either 3.3 volts or ground to use with these signals. These connectors are not installed when the Ethernet RJ45 connectors and LEDs are installed. The pin out is in the table below.

CN14, CN15, CN18, CN19, and CN20 Pin	Function	10/100 Function
1	Link at 10 Mbps	Low when linked at 10 Mbps, blink for activity
2	Link at 100 Mbps	Low when linked at 100 Mbps, blink for activity
3	Link at 1000 Mbps	Low when linked at 1000 Mbps, blink for activity
4	3.3 volts or ground Depends on JP1 setting	If JP1 1-2 is shorted these pins will be ground If JP1 2-3 is shorted these pins will be 3.3 volts

Table 8: CN14, CN15, CN18, CN19, and CN20 External LED

3	1
Link at 1000 Mbps	Link at 10 Mbps
3.3V or GND	Link at 100 Mbps
4	2

Table 9: External LED pin out looking into connector

3.3.6 CON1 AND CON2 POWER CONNECTORS

CON1 and CON2 are input power connectors. CON1, labeled Vin, accepts +7.5 – +36.0 VDC and converts it to +5 volts. This input is protected against power surges and reverse voltage. The +5 volts is then diode ORed with the CON2 input, labeled +5V, input power, so either input can be used. Only one of these inputs is required for operation. If both are connected, the board will only draw power from the higher of the +5 volt input or the output of the +7.5 – +36 volt to +5 volt converter.

3.4 Steps for Installing

1. Always work at an ESD protected workstation, and wear a grounded wrist-strap.
2. Turn off power to the PC/104 system or stack.
3. Select and install stand-offs to properly position the module on the stack.
4. Remove the module from its anti-static bag.
5. Check that pins of the bus connector are properly positioned.
6. Check the stacking order; make sure all of the busses used by the peripheral cards are connected to the cpuModule.
7. Hold the module by its edges and orient it so the bus connector pins line up with the matching connector on the stack.
8. Gently and evenly press the module onto the PC/104 stack.
9. If any boards are to be stacked above this module, install them.
10. Attach any necessary cables to the PC/104 stack.
11. Re-connect the power cord and apply power to the stack.
12. Boot the system and verify that all of the hardware is working properly.

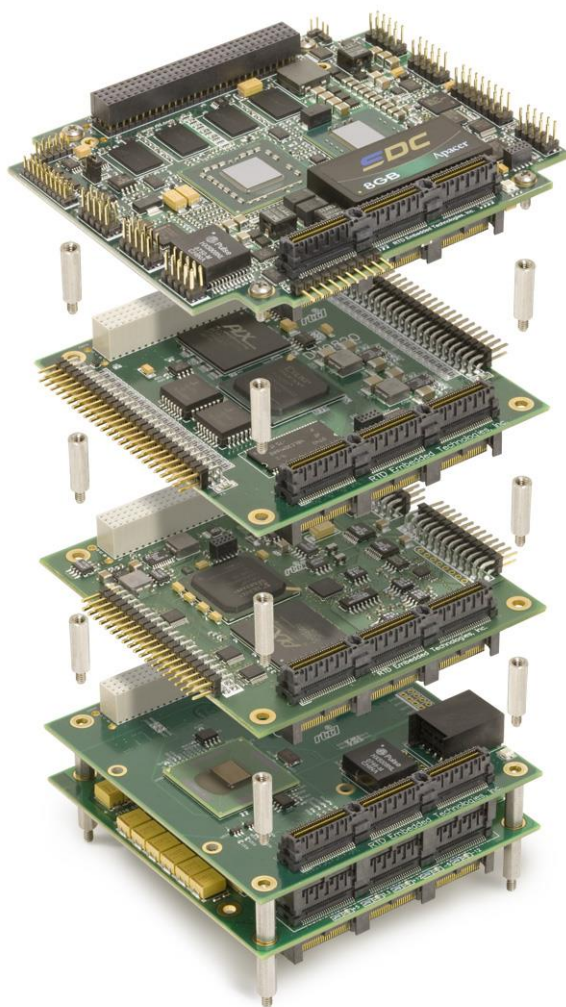


Figure 4: Example 104™ Stack

4 Functional Description

4.1 Block Diagram

The Figure below shows the functional block diagram of the LAN10257HR. The various parts of the block diagram are discussed in the following sections.

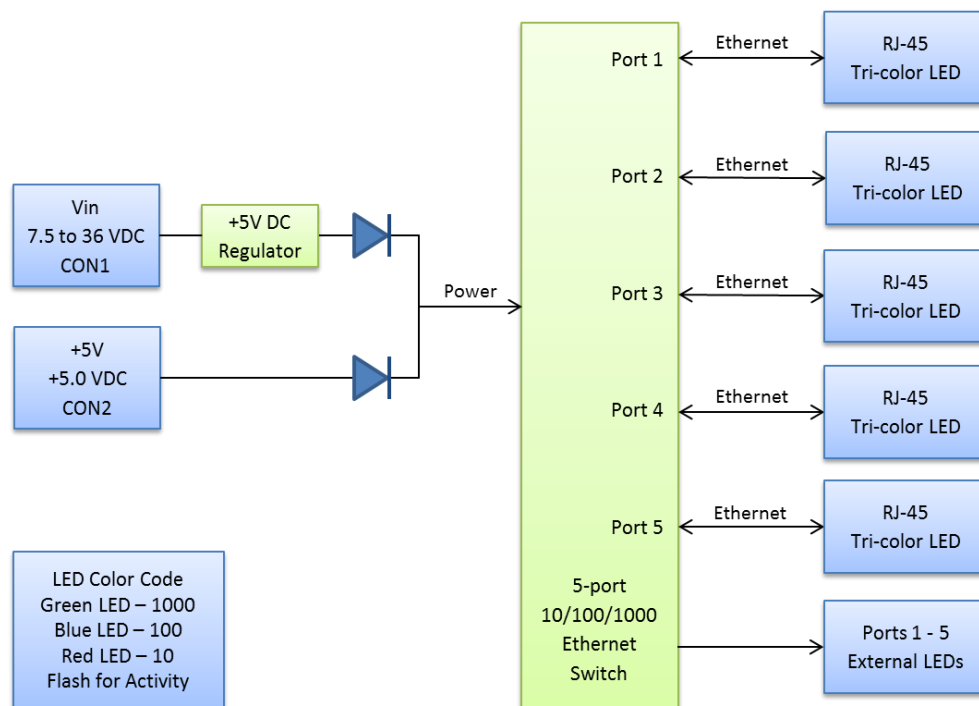


Figure 5: LAN10257HR Block Diagram

4.2 BroadCom Gig-Ethernet Switch

The main component of the LAN10257HR is the BroadCom BCM53115 Gigabit Ethernet switch. This is an industrial temperature rated, 5 port Gigabit Ethernet switch. This switch contains 5 full-duplex 10/100/1000 BASE-TX Ethernet transceivers for network interfacing. All 5 ports are brought to RJ-45 connectors on the board. This allows the LAN10257HR to work as a switch in a stacked system. In a stand-alone system the BroadCom switch acts as a basic Ethernet switch. Any port can be used as an upstream port to supply a connection to the 4 other ports.

4.3 Jumbo Frame Support

The Broadcom Ethernet switch is capable of forwarding Ethernet frames up to 9720 bytes. The maximum frame size supported by the Intel Ethernet controller is 9014 bytes. To use Jumbo frames, it must be enabled in the Ethernet Controller driver settings (e.g. via the Device Manager in Windows). Until this is enabled, the Intel controller will drop any Jumbo frames it receives. Note that to use Jumbo frames effectively, all devices connected to the network must have Jumbo frames enabled, AND must agree on the frame size (mismatched frame sizes will result in dropped packets).

4.4 Onboard LEDs and External LED Connectors

The LAN10257HR has onboard LEDs for each of the five Ethernet ports on the board. The setting for the onboard LEDs is to show link activity, link status and speed at 10/100/1000M. To bring the LEDs out of an enclosed system, there are 4-pin 0.1 inch DIL connectors for each port that can be wired to external LED circuitry. These signals can source or sink 24 mA and the board has a jumper option for 3.3 volt or ground to facilitate external LED configuration.

5 IDAN® Connections

5.1 Module Handling Precautions

To prevent damage due to Electrostatic Discharge (ESD), keep your module in its antistatic bag until you are ready to install it into your system. When removing it from the bag, hold the module by the aluminum enclosure, and do not touch the components or connectors. Handle the module in an antistatic environment, and use a grounded workbench for testing and handling of your hardware.

5.2 Physical Characteristics

- Weight: Approximately 0.21 Kg (0.46 lbs.)
- Dimensions: 151.972 mm L x 129.978 mm W x 16.993 mm H (5.983 in L x 5.117 in W x 0.669 in H)

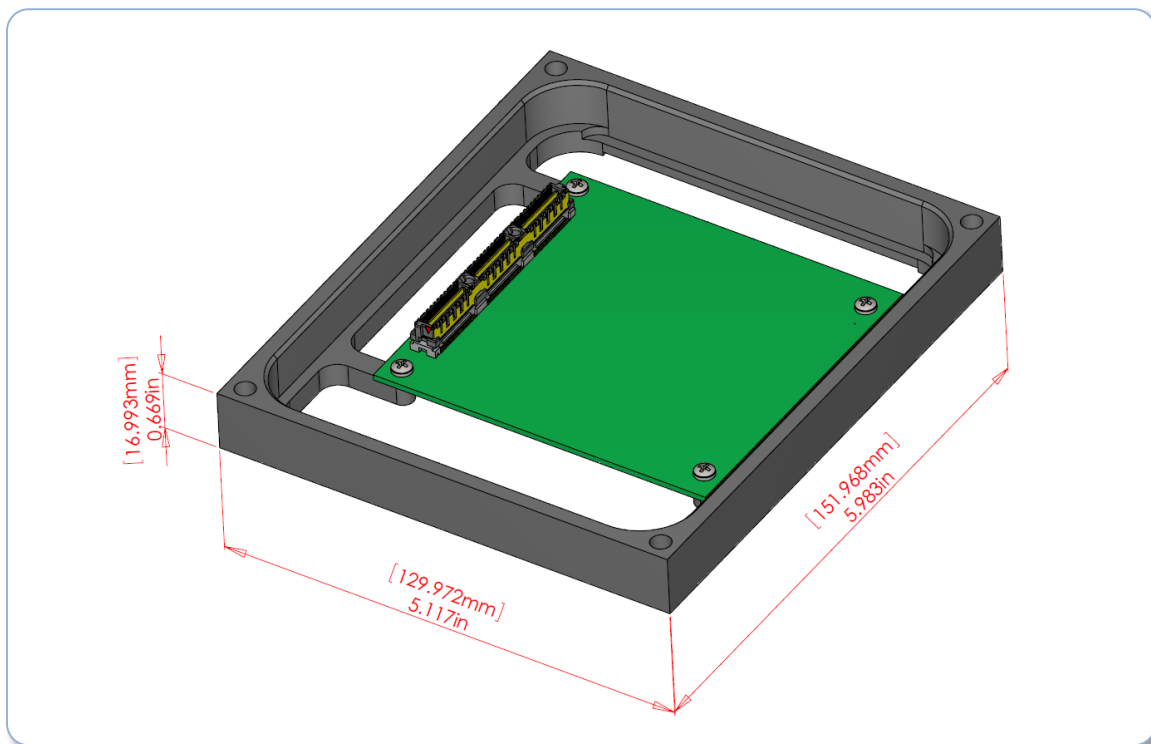


Figure 6: IDAN® Dimensions

5.3 IDAN® Connector Location

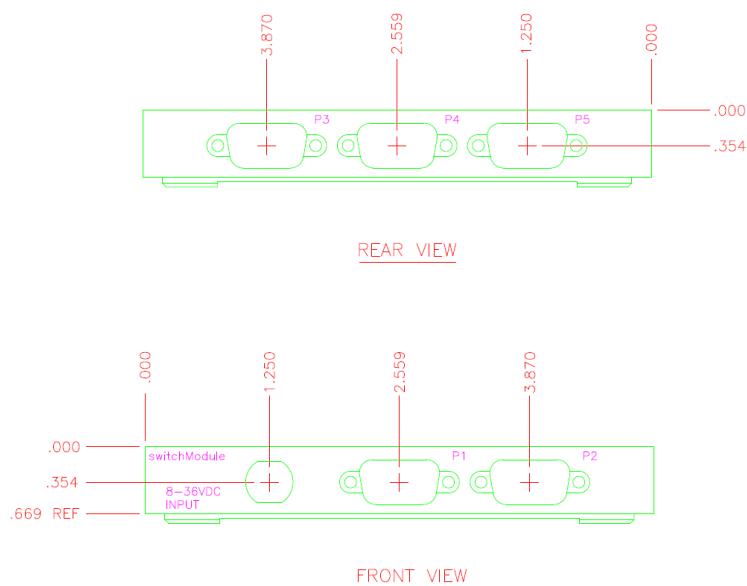


Figure 7: IDAN® Connector Location

5.4 IDAN-LAN10257HR

This utilityModule is also available in an IDAN® configuration. The IDAN® module is shown below.



Figure 8: IDAN-LAN10257HR Rear View



Figure 9: IDAN-LAN10257HR Front View

5.5 IDAN® Twisted Pair Ethernet P1, P2, P3, P4, and P5

As an IDAN®, the Ethernet signals are available on five “D” connectors, two on the front and three on the back. A DB-9 to RJ-45 adapter is also included for each port. The pin out is listed in the table below.

Board CNx	1000 Mbps Function	10/100 Mbps Function	9-Pin "D"	RJ-45 Adapter
1	MDI_B+	Receive +	1	3
2	MDI_B-	Receive -	6	6
3	MDI_C+	Not Used	2	4
4	MDI_C-	Not Used	7	5
5	MDI_A+	Transmit +	3	1
6	MDI_A-	Transmit -	8	2
7	MDI_D+	Not Used	4	7
8	MDI_D-	Not Used	9	8
9/10	Shield Ground		5/NC	

Table 10: LAN10257HR IDAN® Pin Out

5.6 Steps for Installing

1. Always work at an ESD protected workstation, and wear a grounded wrist-strap.
2. Turn off power to the IDAN® system.
3. Remove the module from its anti-static bag.
4. Check that pins of the bus connector are properly positioned.
5. Check the stacking order; make sure all of the busses used by the peripheral cards are connected to the cpuModule.
6. Hold the module by its edges and orient it so the bus connector pins line up with the matching connector on the stack.
7. Gently and evenly press the module onto the IDAN® system.
8. If any boards are to be stacked above this module, install them.
9. Finish assembling the IDAN® stack by installing screws of an appropriate length.
10. Attach any necessary cables to the IDAN® system.
11. Re-connect the power cord and apply power to the stack.
12. Boot the system and verify that all of the hardware is working properly.

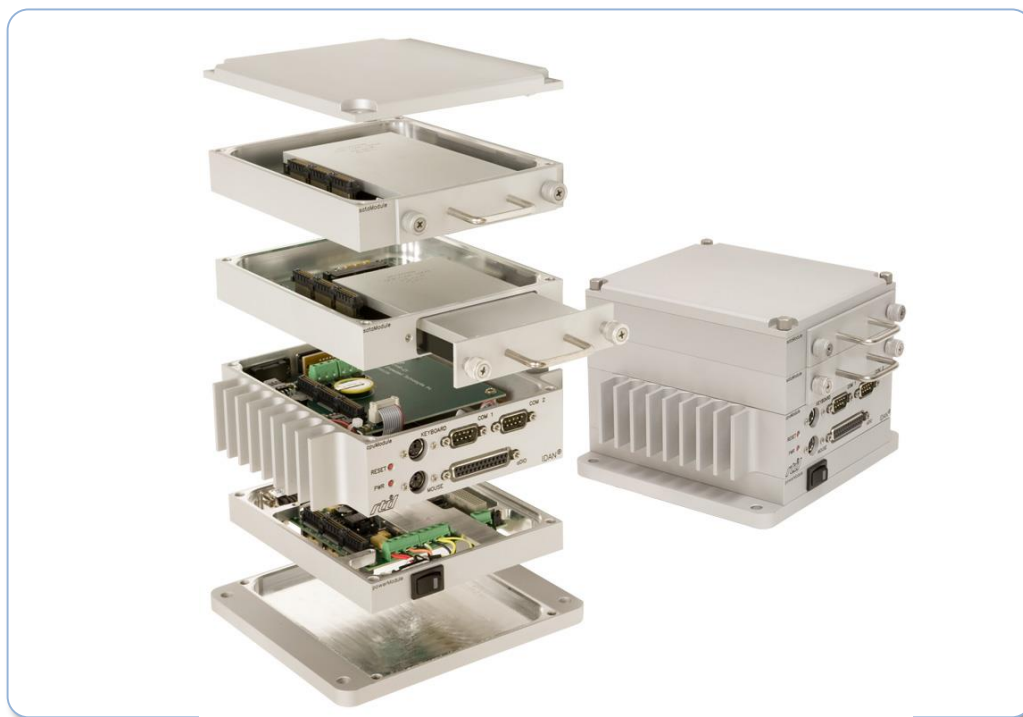


Figure 10: Example IDAN® System

6 Troubleshooting

If you are having problems with your system, please try the following initial steps:

- **Simplify the System** – Remove modules one at a time from your system to see if there is a specific module that is causing a problem. Perform your troubleshooting with the least number of modules in the system possible.
- **Swap Components** – Try replacing parts in the system one at a time with similar parts to determine if a part is faulty or if a type of part is configured incorrectly.

If problems persist, or you have questions about configuring this product, contact RTD Embedded Technologies via the following methods:

Phone: +1-814-234-8087
E-Mail: techsupport@rtd.com

Be sure to check the RTD web site (<http://www.rtd.com>) frequently for product updates, including newer versions of the board manual and application software.

7 Additional Information

7.1 PC/104 Specifications

A copy of the latest PC/104 specifications can be found on the webpage for the PC/104 Consortium:

www.pc104.org

8 Limited Warranty

RTD Embedded Technologies, Inc. warrants the hardware and software products it manufactures and produces to be free from defects in materials and workmanship for one year following the date of shipment from RTD Embedded Technologies, Inc. This warranty is limited to the original purchaser of product and is not transferable.

During the one year warranty period, RTD Embedded Technologies will repair or replace, at its option, any defective products or parts at no additional charge, provided that the product is returned, shipping prepaid, to RTD Embedded Technologies. All replaced parts and products become the property of RTD Embedded Technologies. Before returning any product for repair, customers are required to contact the factory for a Return Material Authorization (RMA) number.

This limited warranty does not extend to any products which have been damaged as a result of accident, misuse, abuse (such as: use of incorrect input voltages, improper or insufficient ventilation, failure to follow the operating instructions that are provided by RTD Embedded Technologies, "acts of God" or other contingencies beyond the control of RTD Embedded Technologies), or as a result of service or modification by anyone other than RTD Embedded Technologies. Except as expressly set forth above, no other warranties are expressed or implied, including, but not limited to, any implied warranties of merchantability and fitness for a particular purpose, and RTD Embedded Technologies expressly disclaims all warranties not stated herein. All implied warranties, including implied warranties for merchantability and fitness for a particular purpose, are limited to the duration of this warranty. In the event the product is not free from defects as warranted above, the purchaser's sole remedy shall be repair or replacement as provided above. Under no circumstances will RTD Embedded Technologies be liable to the purchaser or any user for any damages, including any incidental or consequential damages, expenses, lost profits, lost savings, or other damages arising out of the use or inability to use the product.

Some states do not allow the exclusion or limitation of incidental or consequential damages for consumer products, and some states do not allow limitations on how long an implied warranty lasts, so the above limitations or exclusions may not apply to you.

This warranty gives you specific legal rights, and you may also have other rights which vary from state to state.

RTD Embedded Technologies, Inc.

103 Innovation Boulevard
State College, PA 16803 USA
Telephone: 814-234-8087
Fax: 814-234-5218

www.rtd.com

sales@rtd.com
techsupport@rtd.com

