

# UTAH PLAYER

Portable Digital MP4/MP3/WMA/ASF Player



**MT821**

**User Guide**

## Contents

Introduction .....	2
Features.....	3
Safety instructions .....	3
Player description .....	4
Display.....	4
Battery capacity .....	4
Basic function .....	5
Music mode.....	7
Voice recording.....	8
Playing recording file.....	8
Converting ACT recording files to WAV.....	9
FM Radio.....	10
Playing video.....	11
System setting.....	11
Text file viewer.....	12
Graphic file viewer .....	12
USB disk function .....	13
Other setting.....	14
Encrypt disk function .....	15
Convert video file to AMV format.....	16
Troubleshooting.....	18
Specification.....	19

## Introduction

Welcome in MP4 users exclusive club. Because Your new MP4 player is quite sophisticated device, please read this manual first to discover all exciting features of it.

### MEDIA-TECH Team

## Features

- Really small size
- Supports most of audio and video formats such as: MP1, MP2, MP3, WMA, WMV, ASF, WAV, MTV, AMV.
- Stereo FM Radio with auto-scanning and manual scanning frequencies. Up to 20 FM stations can be stored in the memory
- Text viewer to read TXT files
- Picture viewer to browse JPG and BMP pictures stored in MP4 memory
- USB disk mode to easy replace standard floppies and even CD-ROM discs when You need a move some data from/to the computer.
- Encrypted disk mode allow You to keep safe Your valuable data secured by secret password
- Voice record & replay mode turns MP4 player into professional digital voice recorder. You can record

voice everywhere You are and always with good quality thanks to very sensitive built-in microphone.

- 7 settings of equalizer to make music more familiar to Your ears.
- 7 playing modes to browse and repeating Your favorite songs
- Telephony database to store Your friends phone numbers
- Color OLED display to show movies & pictures in sharp and bright 65K colors environment
- Built-in lithium battery to power Your device without need to replace battery. Just simple connect to USB port and recharge
- External +5V power adaptor to charge Your device from normal, 230V home power outlet

## Safety instructions

The manual contains the important safety instructions and information of the device's proper usage. Make sure to read carefully and understand all the instructions to avoid accident.

- Do not expose the device to extreme temperature (above 40C), especially in cars with shutting windows in summer.
- Do not expose to moisture. Do not store in humid or dirty areas.
- Avoid the device falling and bumping strongly. Do not make OLED suffer from violent shake; otherwise, OLED could be damaged or displayed abnormally.
- Choose the suitable volume. Do not turn up the volume of the earphones too high while using it. If you get ringing in your ears stop using the device or turn the volume down.
- Do not disassemble the device yourself and do not wipe the surface of device with alcohol and benzene and thinners.
- Do not using the device in areas with prohibiting electronic devices, such as in plane.
- Do not use the device while driving an automobile or walking in the street, otherwise, an accident may result.

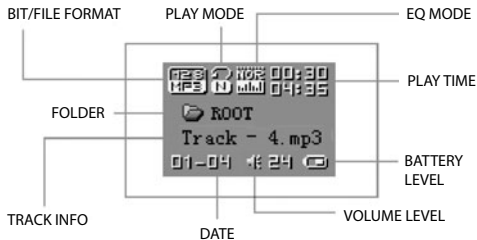
## Player description

### Buttons







- ① Earphone socket
- ② **MODE** button
- ③ **PREV** button
- ④ **NEXT** button
- ⑤ **VOLUME** button
- ⑥ **PLAY/PAUSE** button
- ⑦ Power **ON/OFF** switch
- ⑧ USB port

### Display



### Battery capacity

-  battery is full. Predicted time of playing up to 8 hours. During playing battery level is decreasing.
-  battery is empty. Should be charged immediately. Please connect to power source (USB port or +5V power adaptor).
-  To charge, please turn ON the power switch in the device, otherwise device will not be charged.
-  When MP4 player is not in use, please turn it OFF by power switch.

## Basic function

### ■ Enter main menu

Press and hold **MODE** button to enter main menu.  
To enter any submenu press **MODE** button shortly.

### ■ Browse modes

Use **NEXT** and **PREV** buttons to choose right mode from menu

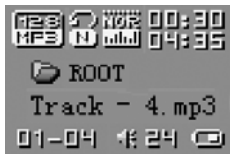
### ■ Enter option menu

When player is in one of modes (ex. Music, Movie or Record mode), please push **MODE** button to enter option menu for specific mode.

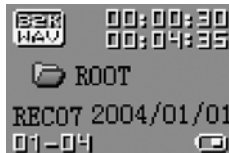
## Main menu



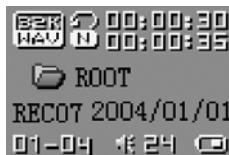
## Music mode



## Recording mode



## Playing recording mode



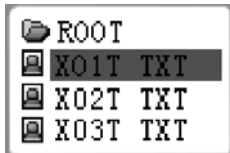
## Radio mode



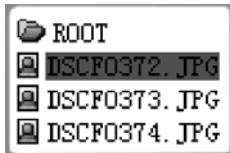
## System settings



### Text viewer mode



### Picture viewer mode



### Connection with PC mode



### ■ Volume control

Press **VOL** button, and then **NEXT** and **PREV** to increase or decrease volume

### ■ Turn ON/OFF

Press and hold **PLAY/PAUSE** button to turn device on or off

### ■ Playing & stopping

In music mode press **PLAY/PAUSE** shortly to play music or pause playing or again start playing. Hold **PLAY/PAUSE** to stop playing music.

### ■ Recording / stop recording

In recording mode press **PLAY/PAUSE** shortly to start recording or pause recording or again start recording. Hold **PLAY/PAUSE** to stop voice recording.

## Music mode

### Playback

1. Insert earphone plug into the earphone socket
2. Move power switch to **ON** position
3. Press and hold **PLAY/PAUSE** button to turn device ON
4. By **PREV/NEXT** buttons choose the music mode and push **MODE** button to enter music mode
5. To choose track (song) use **NEXT** and **PREV** buttons. Press **PLAY/PAUSE** to start playing.
6. If the file containing movie will be set, a video will start display

**Note.** Exactly the same procedure will be used for displaying video files.

### Equalizer setting

1. When music is playing shortly press **MODE** to enter option menu
2. Using **NEXT/PREV** buttons choose **Equalizer**
3. Use **MODE** to confirm choice



4. Choose one of effects: Natural, Rock, Pop, Classic, Soft, Jazz, DBB
5. Confirm Your choice by **MODE**.

### Displaying lyric

Player supports LRC file format which allows to display song lyric simultaneously with music. To use lyric feature, LRC file must have the same name as MP3 song.

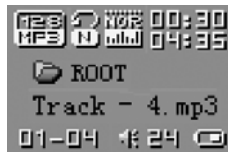
For example:

Music file is: TRACK-4.mp3

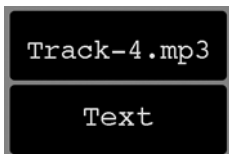
Lyric file should be named: TRACK-4.lrc

The MP3 song containing matched files with lyric are displayed on screen with "**E**" icon, close to battery icon:

1. Chose MP3 file with matched LRC file



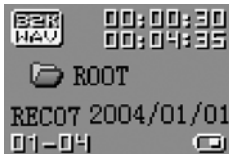
2. Push **MODE** to switch to lyric mode



## Voice recording

### Entering Voice recording mode

1. Enable main menu
2. By **NEXT/PREV** set Record option and confirm by **MODE** button
3. Press **PLAY/PAUSE** shortly to start recording



4. Press **PLAY/PAUSE** shortly to pause recording or hold this button to stop recording.



File with voice recorded is stored in current folder which can be set in Record submenu (push **MODE** button)



If **SPACE FULL** information is displayed, it means that there is not enough space to store more recordings. Please delete unnecessary files to recover memory space.



If **MENU FULL** information is displayed, it means that maximum capacity of current folder (99 files) has been reached. Please change or create new folder for recordings.

## Voice recording type

In stop recording status, press **MODE** button to enter record setting menu. Select **RECORDING TYPE** and press [**MODE**] button to enter.

**Fine recording, WAV format**, good voice quality

**Long recording, ACT format**, fair quality and longer recording time

**Fine VOR, WAV format**, good voice quality, will pause recording automatically when there is no sound detected

**Long VOR, ACT format**, fair quality, will pause recording automatically when there is no sound detected



### Notice: VOR

1. VOR is that voice controls recording on/off. Recording will stop without voice in order to save memory.
2. For fine recording, please record in little noise background.
3. Please do not talk before recording and start recording in 5-6 seconds.

### Playing recording file

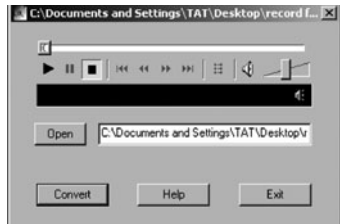
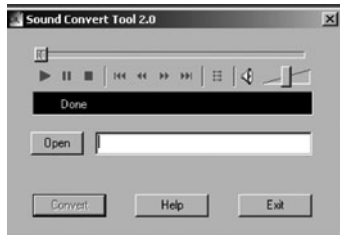
1. Choose VOICE from main menu
2. Press MODE to enter
3. Choose recorded file using NEXT/PREV
4. Press PLAY to start playing

### Converting ACT recording files to WAV

The player can convert ACT files to WAV by attached installation tool.

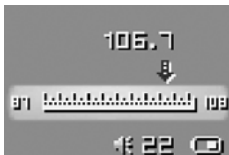
1. Run“**Sound Converter**” and click [**Open**] button, the picture will appear as below:
2. Select ACT files that is converted and click [**Open**]
3. Click [**Convert**] button and begin to convert to WAV format

**Notice.** Besides this function, the tool can play WAV and MP3 formats.



## FM radio

Choose FM Radio from main menu



### Press **MODE** button to enter FM radio menu in FM radio mode

**Save** Save currently tuned frequency to a channel

**Delete** Delete current preset channel

**Delete All** Delete all preset channels

**Normal Band** Frequencies from 87MHz-108MHz

**Japan Band** Frequencies from 76MHz-90MHz

**Auto Search** Auto search channel

**Exit** Escape from FM radio mode

### Auto search

1. Hold **NEXT** or **PREV** button for two seconds to tune frequency upward or downward by 100KHz. When a radio station is located, it will stop automatically. Press **MODE** button briefly to enter radio submenu to save orderly channels. Press again **NEXT** or **PREV** button to resume auto searching and press **NEXT** or

**PREV** button shortly to stop the auto searching.

2. Use radio submenu to search channels automatically.

### Manual search

press **PREV** button briefly to search channel upward

press **NEXT** button briefly to search channel downward

### Listen to FM radio

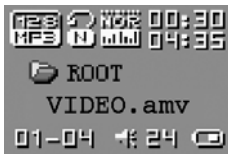
Press **PLAY/PAUSE** button to listen the saved channel.

If no channel is saved, you can listen channels by auto or manual searching.

**Notice:** Normal band and Japan band can each store 20 preset channels.

## Playing video

1. Enter into main menu, short press **NEXT** to choose Video.
2. Short press **MODE** into video playing interface like below:



3. Short press **PLAY/PAUSE** to start playing. Push it again to stop playing video.

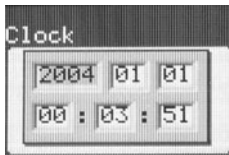
**Note.** The player supports AMV video format only

## System setting

Enter **System** setting mode from main menu

### **Clock**

1. Use **PREV/NEXT** buttons to change values
2. Use VOL button to switch between cells



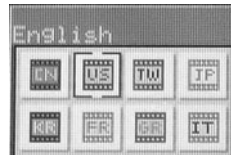
## **LCD setting**

Available settings for display: **brightness** – setting of display brightness; **scrnsav** – setting of time to enable screen saver; **darkle** - setting of time to turn off display backlight; **black** - setting of time to turn display off.



## **Language**

Allows to change user interface language.



## **Power off setting**

**Off time mode:** To set the self-power off time when the player playback is stopped and no button is pressed. If "0" is selected, this function will be disabled. The time unit is seconds.

**Sleep time mode:** To set self-power off time after last key pressed, regardless of whether the player is active or stopped. The time unit is minutes.

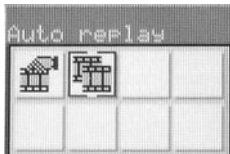


### Replay mode setting

Two options are available:

**Auto replay** – end point of A-B replay is set after silence detection (used in language learning)

**Manual replay** – start and end point of A-B replay is set manually by user.



### Online mode

Refer to other mode setting.

Some operating systems (Windows 98/98SE/4) cannot support USB disk with two disks icons display in MY COMPUTER. When disk is encrypted, select [multi driver], [normal only] and [encrypted only] in the player via connection to PC.

### Memory information

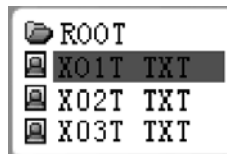
To display the built-in memory size and used memory percentage.

### Firmware version

To display the firmware version and date.

### Text file viewer

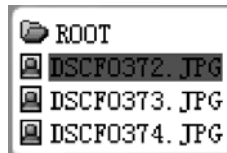
1. Choose **Textread** mode from the main menu



2. Use **NEXT/PREV** to choose TXT file and push **PLAY/PAUSE** to display its content

### Graphic file viewer

1. Choose **LookPic** mode from the main menu



2. Use **NEXT/PREV** to choose JPG or BMP file and push **PLAY/PAUSE** to display it.

## USB disk function

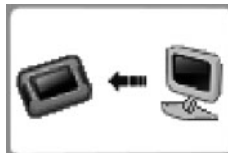
### USB display mode

- The player can be used as a large mobile storage device. For Windows 2000, Mac OS 10.3 or Linux Red-hat 8.0 pro, no driver is required. For Windows 98, driver is required.
- The player supports USB bus-powered and began to charge up when connecting to PC. In suspending mode, press **[MODE]** button briefly to escape from USB mode, then re-select the mode you want to go.
- The player supports Suspend mode and user can create 99 files in one folder.
- When connected to a computer, the OLED will indicate three different modes: suspending mode, data downloading, data uploading.

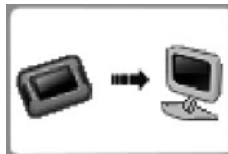
### Connection is active but suspended



### Data downloading



### Data uploading



## Other setting

### Select different folders (stop sub-menu)

Users can save different music files in different folders (folders are prepared in advance in computer), so that users can administrate and display files. The player can display one-level sub-menu.

1. In stopping status (in music, record, voice mode users can select folder), press **MODE** button to stopping sub-menu.
2. Press **MODE** again button to enter local folder
3. Use **NEXT/PREV** button to select folder and press **MODE** button to confirm the selected folder.

#### Note:

- ▲ In music mode, record mode, voice mode, users can set corresponding folder.
- ▲ the player can not read the folder without music files in it.

### Delete files (stop sub-menu)

1. In stopping status (FM has no stopping interface), press **MODE** button briefly to enter stop sub-menu.
2. Use **NEXT/PREV** buttons to select delete all, then press **MODE** button briefly to enter deleting interface.
3. Use **NEXT/PREV** buttons to select [YES] or [NO].

4. Use **MODE** button to delete or exit deleting interface.

#### Note:

- ▲ [delete all] will delete all files in the current folder in the current mode(for example, "delete all" will delete all musical files in music mode and will not delete all record files.
- ▲ It is simple and easy for deleting interface of FM radio. Just operate the first 3 steps and only delete the preset channels.
- ▲ In music, voice and radio mode, users can delete corresponding files and saved channels.

### Playing mode (playing submenu)

During playing music and recording file, you can choose different playing mode which contains:

#### Equalizer

See "Equalizer setting"

#### Repeat mode

In music play menu, the user could enter Repeat interface. Use **PREV/NEXT** buttons to select repeat mode.

- |                      |                               |
|----------------------|-------------------------------|
| <b>Normal</b>        | Play all the songs once       |
| <b>Repeat One</b>    | Repeat play one song          |
| <b>Folder</b>        | Play the selected folder once |
| <b>Repeat Folder</b> | Repeat all songs              |

<b>Repeat All</b>	Repeat all songs
<b>Random</b>	Randomly select song to play
<b>Intro</b>	Play the first part of all saved tracks for 10 seconds

### ■ Tempo rate

Use **NEXT/PREV** buttons to set speed of playback rate. Move puller to positive direction to increase speed and move o negative to decrease speed of playback. “0” value means normal tempo rate.

### ■ Replay mode

A—B replay: set replay tag A and B, use the **NEXT/PREV** buttons to set tag A and tag B.

### ■ Replay time

In music play menu, enter [replay time] by using **NEXT/PREV** button to select the number of replays. Then press **MODE** to confirm.

### ■ Replay gap

Enter replay gap option. Refer to “replay time” setting and set replay time gap between every replay (time unit is second).

## Encrypt disk function

User can use the attached tool to set partitions for USB disk. One is normal disk, other is encrypted disk. (User can see two disk icons in computer. WINDOWS 2K need install SP4, otherwise, user only see one disk icon and selecting [**normal only**] or [**encrypt only**] of [**online**

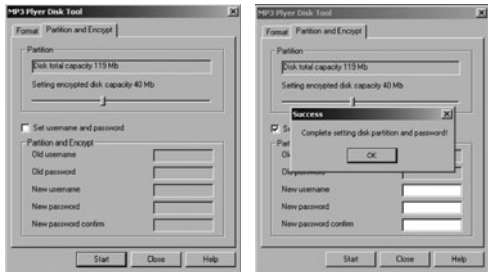
**mode**] of [**system set**] [**will see other icon**]. Encrypted disk would hide all private data, other cannot access data without password.

### ■ Disk partition steps

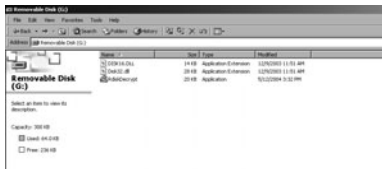
1. Connect the player to PC and run attached procedure: MP3 PLAYER DISK TOOL.



2. Choose [**partition and encrypt**] option and decide available size of each disk. Set username and password, put username in [**new user**] and new password in [**new password**], then confirm them. After clicking [**start**] button, dividing disk begins. Click [**OK**] to reboot computer.



- After rebooting computer, users will see two disk icons (SP4 installation is a must). Click the encrypted disk and three files is in the encrypted disk. Two are hidden files and one is executive file. Disk capacity is only 300K.



- Run executive file: RDISK.DECRYPT.EXE, put username and password in dialog window. If correct, user can access disk.




### Note:


- ▲ Data in encrypted disk cannot be read by the player.
- ▲ It is necessary for access encrypted disk to input username and password when connecting to computer.
- ▲ Setting partitions will erase data, please backup data. Combination disks would also erase data.
- ▲ Please do not lose username and password. Otherwise, you cannot access encrypted disk. You can combine disks to cancel encrypted disk at risk of damaging data in encrypted one.

### Convert video file to AMV format


This device supports only AMV format for video files. To watch other video format files such as AVI, MPG, MOV, WMV etc. you have to use a converting application which is delivered on driver disc together with player.

- Run "AMV Convert Tool", and click  button to choose the path for file need to convert, then;



2. Click  button to choose the path for destination file.



3. Click  button to start conversion.



## Troubleshooting

If the player couldn't play normally, please use trouble shooting guide to help you.

Symptom	
The player cannot be turned on	Please check the battery capacity. Please check if the device's procedure is damaged.
The player crashes	Press RESET button to start the player.
The player cannot work	Please check the battery capacity. Please check if HOLD mode is set. Please check volume is set to "0" and make sure that earphones are connected properly and clean. Corrupted music data will make noise in some extent even be played abnormally; make sure the files are full. Please choose FAT file system in dialogue box when formatting disk.
The player cannot upload /download files; no disk icon in computer	Please check USB cable is correctly connected. Please re-install properly driver.
The player cannot record	Please check if memory is sufficient. Please check the battery capacity.
Strange characters are displayed on screen	Please check if the correct language is selected.

If you encounter other difficulties in warranty, please contact our company.

## Specification

If the player couldn't play normally, please use trouble shooting guide to help you.

Item	Specification
Dimensions	56x30x13mm (W*H*D)
Weight	26g
Display	OLED 96*64ppi 65K colors
Interface	USB1.1
File formats supported	Music&Video: MP1, MP2, MP3, WMA, WMV, ASF, WAV, AMV, JPG, BMP, Record: ACT, WAV
FM frequency	76MHz-96MHz/87MHz-108MHz
S/N rate	85dB
The max output power	(L) 10mW+(R) 10mW (320hm)
Built-in memory	128MB/256MB
Power	3.7V lithium battery built-in
Time of working on battery (without recharging)	Play time: up to 7h, Record time: up to 8h, Radio FM listening time: up to 8h
Operating temperature	-5°C - 40°C
Operating System	WINSE/ME/2K/XP, Mac OS 10.x, Linux 2.4.2, (WIN98 needs the driver)
Accessories	User's manual, earphone, power adaptor, USB cable, driver CD

Specification and appearance is subject to change and improvement without prior notice.

