

User's Manual

QA-151

AIR DIE GRINDER

Read this manual carefully before installing, operating, servicing or repairing.

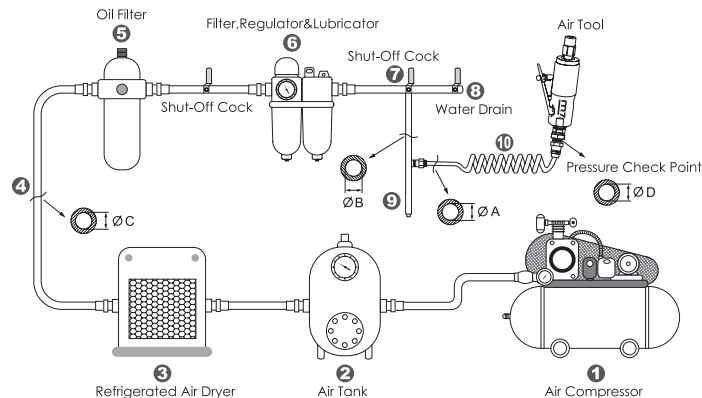
Working environment:

- Using these tools in any potentially explosive environment is strictly prohibited.
- It is always recommended that these types of tools must be operated when standing on a solid or firm location.
- Always use these tools in a well ventilated area.
- Slipping, stumbling and falling are the major causes of potential serious injury, therefore, a clean and clutter free surface in the working area before operating the tools is strongly recommended.

Air supply and connection requirements:

- The maximum recommended air pressure during operation must not exceed 90 psi (6.3bar). Higher air pressure may create unsafe operating conditions for the tool and the user.
- The compressed air should be cooled and have a water filter installed at the outlet end of the compressor. Even with a water filter installed, some water may still condense in the piping or hose and will enter the tool mechanism causing premature damage to the tool. Therefore, it is recommended to install an air filter-lubricator device somewhere between the tool and the compressor.
- Always use an air compressor of the proper capacity to operate each tool.
- Clean the hose with a blast of compressed air before connecting the hose to the air tool. This will prevent both moisture and dust inside the hose from entering the tool and causing possible rust or malfunction.

Ideal system connection:



Piping diameters and length requirement:

- ★The diameter ΦA required for the inlet pipe (10) is recommended on the specification table.
- ★The diameter ΦB required for the branch pipe (from 7 to 9) should be 2 times as large as ΦA .
 $\Phi B = 2 \times \Phi A$
- ★The diameter ΦC required for the primary air supply (from 1 to 3) should be 3 times as large as ΦA .
 $\Phi C = 3 \times \Phi A$
- ★The length for the inlet pipe (10) should be less than 15 feet (4.5m).



Warning:

- This tool should only be used as a hand operated tool. It is powered by compressed air and is not insulated against electric shock.
- This tool is specially designed for tightening or loosening bolts or nuts. Any application or use of this tool other than what it is designed for is strictly prohibited.
- Use only pneumatic impact sockets and accessories on this tool. Never use hand sockets or accessories.
- High sound levels may cause hearing damage. Always wear hearing protection when operating this tool.
- Wearing eye/face protection can reduce the danger of high-speed socket being ejected from the tool, due to improper socket insertion during operation.
- User must wear proper clothing. Loose clothing, long hair, stings, straps, belts and jewelry should not be worn when operating this tool.
- Before using these tools, make sure that all couplings and plugs are securely mounted. Air hoses which are under pressure will cause a whipping action when disconnecting, this can lead to serious injury!
- Make certain to stand on a solid or firm location and keep body in well-balanced position while operating this tool.
- Test run the tool to confirm the rotation direction before practical use. This will reduce the potential hazard due to unexpected rotating direction.
- In case of tool insert failure, always keep hands away from rotating socket to reduce the risk of being injured, especially when working in confined spaces.
- Always turn off the air supply and disconnect the air hose before changing socket or making adjustments on the tool.
- Release the throttle trigger to avoid danger if there is a failure of energy supply and when connecting or disconnecting the air hose.
- Prolonged use will cause user fatigue. Periodic breaks are recommended for user safety.
- It is recommended to stop operating the tool whenever the user experiences discomfort, tingling or pain during use.
- Beware if the compressed air hose breaks unexpectedly, or is being connected or disconnected improperly. This whipping action may cause injury.
- Always use caution when operating this tool to prevent injury.
- Avoid storing this tool where it is subject to high humidity.



EC DECLARATION OF CONFORMITY

Original Language
Serial Number: Air Die Grinders
Item No.: QA-151
6.3 bar (90. psi)

We declare under our own responsibility that the above machinery fulfils all the relevant provisions of (MD) Machinery Directive 2006/42/EC and its amendment and is manufactured and tested according to the following standards:
EN ISO 11148-9 / EN ISO 15744 / EN ISO 28927-12

Declared in: Taichung, Taiwan
Dated: 2013/06/01

Signature

Jonney Chen

Jonney Chen
Declared by: QA Manager

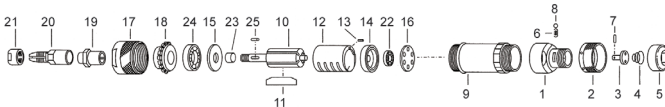


Manufacturer:
Mighty Seven International Co., Ltd.
No. 70-25, Ching Quang Rd., Wuji
Dist., Taichung City, 41466 Taiwan
<http://www.mighty-seven.com>

Authorized contact, to compile the technical files :
King Tony France
3 Rue des imprimeurs ZI République Nord 1.
86000 POITIERS FRANCE
TEL: (+33)5-49-30-30-90
E-MAIL: christian.aubineau@kingtony.eu



Air Die Grinder Item No : QA-151



Collet Size 6mm

Item No.	Collet Size mm(inch)	Free Speed R.P.M	Avg. Air Consumption CFM	Air Pressure PSI	Overall Length inch	Motor hp	Net Weight LBS / kg	Air Hose inch	Sound Pressure EN ISO 10744 dBA	Vibration level m/s²
QA-151	1/4"	18000	12.2(345)	90	7"(177)	0.9	1.76lb(0.8kg)	3/8"	75.0	2.1

Uncertainty K=0.5a if a ≤ 5 m/s² or K=0.4a if a > 5 m/s²

Part List

QA-151



NO.	PART NO.	DESCRIPTION	Q'TY	NO.	PART NO.	DESCRIPTION	Q'TY
1	QA-151P01	Housing Cover	1	16	QA-151P16	Bearing Cover	1
2	QA-151P02	Throttle Valve Handle	1	17	QA-151P17	Spindle Bearing Cover	1
3	QA-151P03	Throttle Valve	1	18	QA-151P18	Bearing Spacer	1
4	QA-151P04	Throttle Valve Spring	1	19	QA-151P19	Chuck Collar	1
5A	QA-151P05A	Throttle Valve Cover(PT)	1	20A	QA-151P20A	Collet (6mm)	1
5B	QA-151P05B	Throttle Valve Cover(NPT)	1	21	QA-151P21	Collet Nut	1
6	QA-151P06	Knock Spring	1	22	QA-151P22	Ball Bearing 626	1
7	QA-151P07	Needle Roller	1	23	QA-151P23	Inner Race	1
8	QA-151P08	Ball	1	24	QA-151P24	Ball Bearing 6001	1
9	QA-151P09	Housing	1	25	QA-151P25	Key	1
10	QA-151P10	Rotor	1	20B	QA-151P20B	Collet (1/4")	1
11	QA-151T11	Rotor Blade (4 pcs)	1 SET				
12	QA-151P12	Cylinder	1				
13	QA-151P13	Spring Pin	1				
14	QA-151P14	Cylinder Upper Plate	1				
15	QA-151P15	Cylinder Lower Plate	1				