

**UK** Subject to change

**Document Ref:**  
**FTC-400/720190**

**Copyright©**  
These instructions are the sole property of Ferm/Omega Safes Ltd and may not be reproduced

**USER'S MANUAL**

***Ferm Tile Cutter***

***FTC-400***

**CE**

**Ferm<sup>®</sup>**

Art.nr. 720910

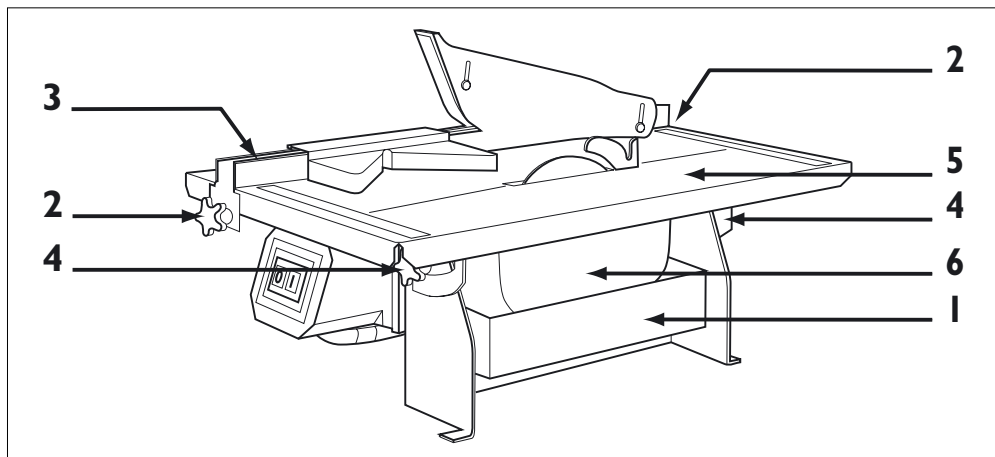


Fig. 1

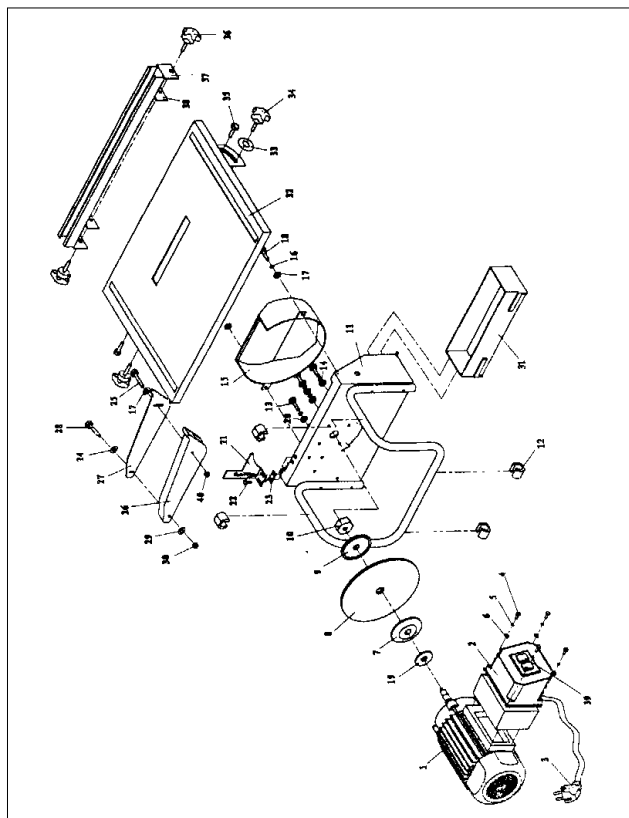


Fig. 2

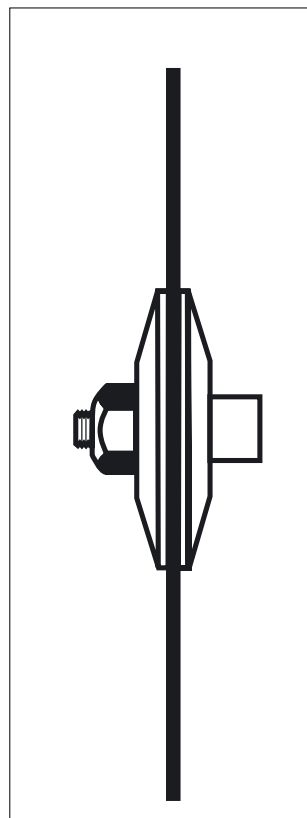
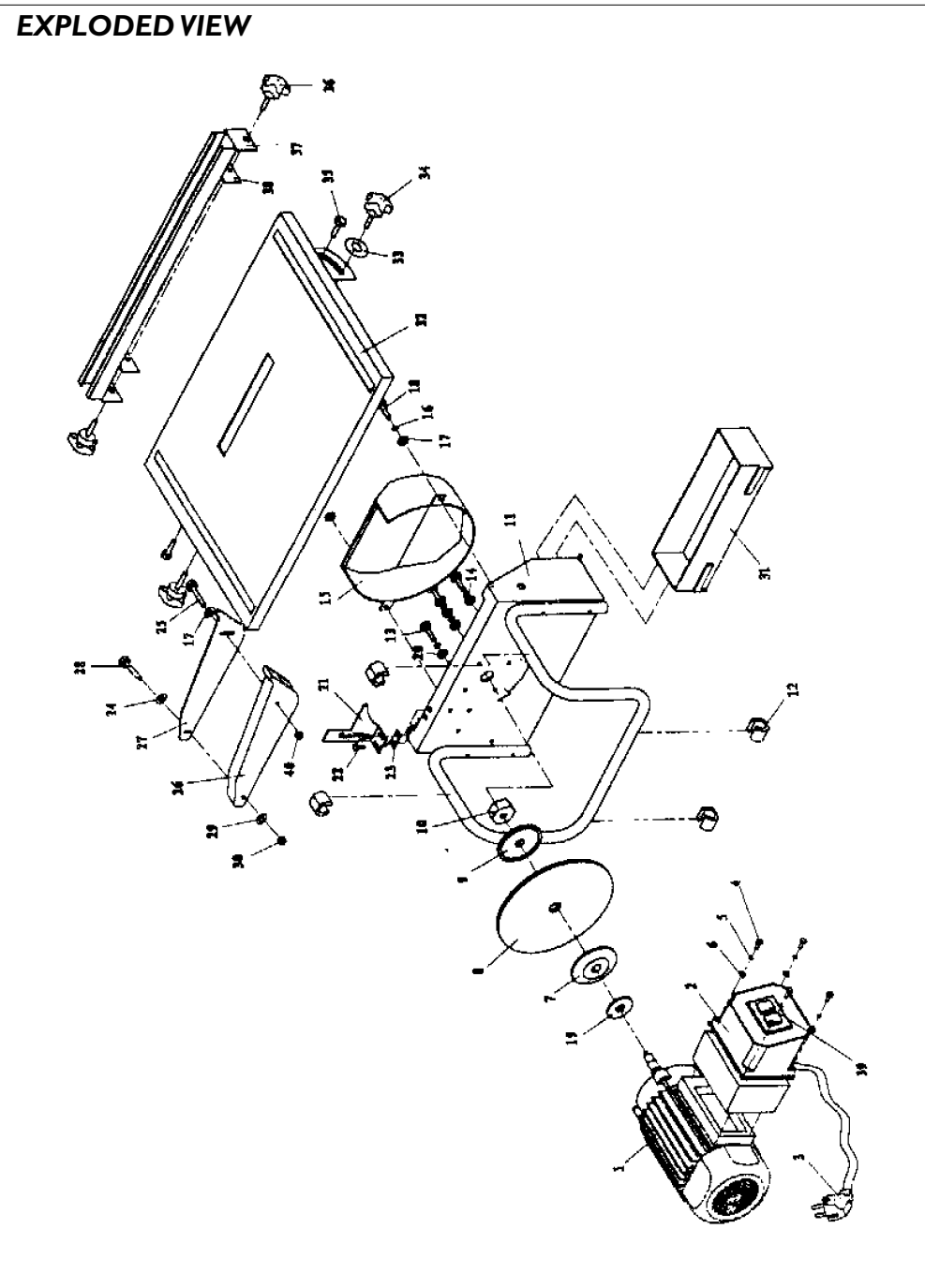


Fig. 3



## SPARE PARTS LIST FTC-400

FERM NR	DESCRIPTION	REF NR
407452	MOTOR 230 V/400 WATT	001
700080	COMPONENT OF POWER BOX	002
700081	WIRE	003
407478	INSIDE FLANGE	007
340830	DIAMANT CUTTING DISC	008
407479	OUTSIDE FLANGE	009
700082	TUBE SHOCK ABSORBER	012
700083	WATERPROOF COVER	015
700084	PROTECTIVE COVER	026
700085	PROTECTIVE BOARD	027
700086	WATER TANK	031
700087	COMPONENT OF TABLE	032
407456	M6 BIG STAR-KNOB	034
407455	M6 SMALL STAR-KNOB	036
700088	FENCE	037
407557	CLAMP FOR FENCE	038
700089	COMPONENT OF SWITCH	039



## FERM TILE CUTTING MACHINE

THE NUMBERS IN THE FOLLOWING TEXT  
CORRESPOND WITH THE PICTURES AT PAGE 2

### TECHNICAL SPECIFICATIONS

Voltage	230V
Frequency	50Hz
Power input	400W
No load speed	2950/min
Cutting angle	0-45°
Cutting capacity 90°	19mm
Cutting capacity 45°	11mm
Machine weight	10kg
Lpa (sound pressure level)	92.0 dB(A)
Lwa (sound power level)	104.5 dB(A)

### SAFETY INSTRUCTIONS

The following pictograms are used in these instructions for use:



Denotes risk of personal injury, loss of life or damage to the tool in case of non-observance of the instructions in this manual.



Denotes risk of electric shock.

### GENERAL SAFETY INSTRUCTIONS



**Warning!** When using electric tools basic safety precautions should always be followed to reduce the risk of fire, electric shock and personal injury.

**Read all these instructions before attempting to operate your product. Save these instructions for future reference.**

#### Keep work area clear

Cluttered areas and benches invite injuries.

#### Consider work area environment

Do not expose tools to rain. Do not use tools in damp or wet locations. Keep work area well lit. Do not use tools in the presence of flammable liquids or gases.

#### Guard against electric shock

Avoid body contact with earthed or grounded surfaces.

#### Keep other people away

Do not let others, especially children, not involved in the work touch the tool or the extension lead and keep them away from the work area.

#### Store idle tools

When not in use, tools should be stored in a dry locked-up place, out of reach of children.

#### Do not force the tool

It will do the job better and safer at rate for which it was intended.

#### Use the right tool

Do not force small tools to do the job of a heavy tool. Do not use tools for purposes not intended; for example do not use circular saws to cut tree limbs or logs.

#### Dress properly

Do not wear loose clothing or jewellery, they can be caught in moving parts. Non-skid footwear is recommended when working outdoors. Wear protective hair covering to contain long hair.

#### Use protective equipment

Use safety glasses. Use face or dust mask if cutting operations create dust.

#### Connect to dust extraction equipment

If devices are provided for the connection of dust extraction and collecting equipment, ensure these are connected and properly used.

#### Do not abuse cable

Never pull the cable to disconnect it from the socket. Keep the cord away from heat, oil and sharp edge.

#### Secure Work

Where possible use clamps or a vice to hold work. It is safer than using your hand.

#### Do not over-reach

Keep a proper footing and balance at all times.

#### Maintain tools with care

Keep cutting tools sharp and clean for better and safer performance. Follow instructions for lubricating and changing accessories. Inspect tool cords periodically and if damaged have them repaired by Omega Safes Ltd. Inspect extension cords periodically and replace if damaged. Keep handles dry, clean and free from oil and grease.

#### Disconnect tools

When not in use, before servicing and when changing accessories such as blades, bits and cutters disconnect tools from the power supply.

#### Remove adjusting keys and wrenches

Form the habit of checking to see that keys and adjusting wrenches are removed from the tool before turning it on.

#### Avoid unintentional starting

Ensure that the switch is in off position when plugging in.

#### Use outdoor extension leads

When the tool is used outdoors, only use an extension cable intended for outdoor use and so marked.

## Stay alert

Watch what you are doing, use common sense and do not operate the tool when you are tired. Under no circumstances should you allow your hands to enter the blade cutting zone. Secure the machine to a solid worktop so that it cannot move while in operation.

## Check damaged parts

Before further use of the tool, it should be carefully checked to determine that it will operate properly and perform its intended function. Check the alignment of moving parts, binding of moving parts, breakage of parts, mounting and any other conditions that may affect its operation.

A guard or other part that is damaged should be properly repaired or replaced by an authorized service centre unless otherwise indicated in this instruction manual. Do not use the tool if the switch does not turn it on and off.



**Warning!** The use of any accessory or attachment other than one recommended in this instruction manual may present a risk of personal injury.

## Have your tool repaired by a qualified person

This electric tool complies with the relevant safety rules. Repairs should be carried out by a qualified person using original parts, otherwise this may result in considerable danger to the user.

## SAFETY PROVISIONS

- Before starting work, check your machine for damage, with particular reference here to the diamond blade. All parts must be fitted in the correct manner and must comply with all preconditions to guarantee optimum operation of the machine. For continued use of the machine, the safety facilities or slightly damaged parts should be tested for their correct operation. This must be carried out in accordance with the aforementioned preconditions. Moving parts, with particular reference to the protective cover for the diamond blade, should be securely fastened and may not stick or jam. Do not use machines which do not have a switch for starting up and shutting down.
- The protective cover for the diamond blade may not be clamped in place or removed. A protective cover that sticks or jams should be repaired immediately. The riving knife may not be removed.

## SETTING UP THE TILE CUTTING MACHINE

- Electrical connection should take place by means of a 230 V earthed wall socket (the mains voltage should correspond with that stated on the type plate) which is protected by a residual circuit breaker switch.
- The cable may not be used to pull the plug out of the wall socket. Protect the cable from heat sources, oil and sharp objects.



For your own safety, only use accessories and auxiliary equipment which are mentioned in the instruction manual or have been recommended or mentioned by the manufacturer of the machine. Using other accessories or auxiliary equipment can carry the risk of causing injury to you or others.

## OPERATION

Fig. 1

- Ensure that there is sufficient water in the water reservoir (1) before starting work, i.e. enough to allow the diamond blade to pass through the water. During work activities, the water must be topped up.
- Do not start work until the correct rotational speed has been reached.
- Diamond blades may NEVER be exposed to sidelong pressure! This can cause them to break. Flying pieces act as missiles and are highly dangerous!
- Do not attempt to cut very small pieces of tile. During work, always make sure that the entire surface of the tile is resting on the work table. The mitre guide (supplied) can be used to slide paving tiles through the machine. Ensure that the paving tile remains level, especially in the initial cutting phase. Doing this prevents the blade from jolting upwards during cutting.
- Do not overload your tools. Your work is carried out better and safer within the given maximum cutting capacity of 19 mm. Do not cut other materials other than tiles.
- Meticulously maintain your tools. Keep your tools sharp and clean in order to be able to work safely and correctly. Follow the maintenance instructions and the directions concerning replacement of the diamond blade.
- Ensure that you stand in a safe position and always keep your balance. Avoid unnatural bodily positions. Be constantly on your guard. Use caution in everything that you carry out. Be sensible at work. Do not use the machine if you are not able to concentrate or if you are tired.

## CUTTING GUIDE

Fig. 1

It is possible to cut parallel to another guiding edge using the parallel guide (3).

Adjustment: undo the knobs (2) and adjust to the desired distance. Retighten the knobs.

## MITRE ANGLE ADJUSTMENT

Fig. 1

The mitre angle can be variably adjusted from 0° to 45°. Loosen the star-shaped knobs (4) and adjust the mitre angle by tilting the table (5) upwards until the desired gradient is reached. Finally, retighten the knobs (4).

## CLEANING, MAINTENANCE AND REPAIRS

- Remove the plug from the wall socket after use and before cleaning the machine, replacing the diamond blade or interchanging the water reservoir.
- The machine is cleaned immediately after use as follows:
  - a. Remove the plug from the wall socket.
  - b. Remove the water reservoir (1, fig. 1) from the machine and allow the dirty water to drain away.
  - c. Unscrew the waterproof cover (6, fig. 1) and clean this.
  - d. Loosen the star-shaped knobs (4, fig. 1), fold the table upwards and clean the entire machine.
- The machine complies with the current safety preconditions. All repair work may only be performed by a recognised company as unauthorised repair attempts can carry the risk of injury to the user or to bystanders. Regularly check the plug and cable and allow these to be replaced by a recognised company in the event of damage to either. Likewise, check the extension cables. Damaged safety facilities and switches should, in the correct manner, be replaced in order to continue using the machine.

## CHECKING AND REPLACING THE DIAMOND BLADE

- Diamond blades that are cracked or distorted should be replaced.
- Type of blade: Ø 150 x 25.4 mm, diamond blade.
- Diamond blades which do not comply with the specifications laid down in this instruction manual may not be used.
- The plug should be removed from the wall socket before changing the blade and adjustment or cleaning activities.
- Care should be taken to ensure that the diamond blade is fitted securely and rotates in the correct direction.
- To replace a worn blade you should proceed as follows:
  - a. Remove the plug from the wall socket.
  - b. Remove the water reservoir (3 1, fig. 2) from the machine.
  - c. Undo and remove the attachment bolts (1 8, fig. 2) for the waterproof cover. (1 5, fig. 2)
  - d. Undo the nut which holds the blade in place. (1 0, fig. 2).
  - e. Remove the blade (8, fig. 2) and slide the new blade onto the flange. Take care to observe the direction of rotation which is indicated by an arrow on the blade. Next, refit the counterflange (9, fig. 2).
  - f. Retighten the nut which holds the blade in place (1 0, fig. 2) and refit the waterproof cover. (1 5, fig. 2)
  - g. Be sure that you do not leave any tools behind the waterproof cover.

## DISPOSAL OF ELECTRICAL TOOLS AND CONSERVATION

If your electrical tool is at the stage where it has been used intensively to such an extent that it must be replaced, or if you no longer use it, please think about the environment. Electrical equipment does not belong with ordinary household waste but can be recycled in an environmentally friendly manner. Dispose of at your local civic amenity site.

## MAINTENANCE

**When not in use, washdown immediately, following these steps:**

- Disconnect the tool from the source of power.
- Clean the table.
- Let the dirty water out and clean the water tank. Push the sliding structure to the "0" position, tighten knob (No. 4, fig. 1)
- Store the tool according to the safety instructions.

## CE DECLARATION OF CONFORMITY (UK)

We declare under our sole responsibility that this product is in conformity with the following standards or standardized documents

**EN61029-1, EN55014-1, EN55014-2,  
EN61000-3-2, EN61000-3-3**

in accordance with the regulations:

**98/37/EEC  
73/23/EEC  
89/336/EEC**

from 30-11-2002  
**GENEMUIDEN NL**  
W. Kamphof  
Quality department