

PERSONAL INFORMATION

Name	:		Position	:	
Complete Address	:				
Telephone	:		Mobile	:	

SCHOOL INFORMATION

School Name	:				
Complete Address	:				
Region / Province	:		Division / District	:	
Telephone	:		Fax	:	
Email	:		Website	:	

School Head

Name	:		Position	:	
Telephone	:		Mobile	:	

TEXT2TEACH INFORMATION

Mobile Phone

Phone IMEI	:		Date Received	:	
------------	---	--	---------------	---	--

Globe SIM Card

SIM No.	:		Date Received	:	
---------	---	--	---------------	---	--

Television Set

Serial No.	:		Date Received	:	
------------	---	--	---------------	---	--

0917 561 3585

TEXT2TEACH HELPDESK

Contact us first for any problems/concerns regarding Text2Teach

Table of Contents

I. INTRODUCTION	
A. Text2Teach	5
B. Philippine Implementation Team	6-8
II. THE TEXT2TEACH PACKAGE	9-10
III. THE MOBILE PHONE	
A. Different Keys of the Phone	11
B. Charging the Mobile Phone	12
C. Resetting the Mobile Phone	12
IV. THE TV SET	
A. Parts of the TV Set	13
B. Connecting the Phone to the TV	14-15
V. USING NOKIA EDUCATION DELIVERY (NED)	
A. Nokia Education Delivery (NED)	16
B. Running NED	17
C. Viewing the Videos	
• Playing a video	18-20
• Searching for a Video	20-22
• Deleting a Video	22-23
• Volume Control	23
• Playback Options	23
D. Downloading Videos	
• Setting the Server URL	24-25
• Updating the Catalog	25-27
• Downloading Videos	27-32
• Status of Download/s	32-34
E. Statistics	35
F. Options	
• Setting the Download Time	36-37
• Activating/Deactivating Download State	37-38
G. Exiting NED	39
VI. VIDEO RECORDING FEATURE	
A. Recording a Video Clip	40-42
B. Video Setting	43-44
C. Viewing the Video	
• After Recording	45
• Gallery	46-48
D. Editing a Video Clip	49-50
E. Transferring Video Clips to the Computer	51-54
VII. ADDITIONAL INFORMATION	
A. Configuring the GPRS Setting	55
B. Equipment Care	56
C. Green Tips (Energy Saving Tips)	57-58
VIII. TEXT2TEACH SECRETARIAT	59

I. INTRODUCTION

A. Text2Teach



Congratulations on receiving your Text2Teach package! You are now on your way to a more interactive and enriched teaching experience.

Text2Teach is a program that makes use of mobile technology so that schools can have access to rich multi media videos. It aims to improve the quality of teaching in grades 5 and 6 in public elementary schools by providing highly interactive, easy to use multi media packages designed to help make learning more exciting and meaningful among students.

With the partnership of Ayala Foundation, Nokia, Department of Education, Globe Telecom, and SEAMEO-INNOTECH, Text2Teach is expanding to reach more schools in the Philippines.

The Nokia mobile phone is equipped with an exclusive application called “Nokia Education Delivery (NED)” that allows the teacher to select from 389 interactive, educational videos in Math, Science, and English. These videos were pre-loaded into the phones for the teachers to choose from. In the future, additional educational videos will be developed and can be downloaded and stored in the mobile phones using Globe’s 3G technology.

All you have to do is plug the phone into a TV and play the video lesson for the day. The 3 to 5-minute educational videos created for the project bring these subjects to life, illustrating key concepts, skills, and competencies that students are expected to master. These video lesson plans also help make teachers’ lives easier and are compliant with the Basic Education Curriculum.

In putting together a program that would empower the teacher and the student with relevant and high-quality educational resources in the least amount of time and cost, Text2Teach is a cost-effective approach to closing the ever-widening gap restricting social and economic progress in developing countries.

B. Philippine Implementation Team

AYALA FOUNDATION INC.



Ayala Foundation, Inc.'s (AFI) mission is to improve the quality of life of the Filipino by contributing to the eradication of poverty in all its forms. AFI is committed to working for national development by harnessing the full potential of corporate social responsibility; developing and promoting social technologies that respond to the country's needs; facilitating access to knowledge and learning; and instilling pride in being a Filipino.

Now nearing its 50th year, the foundation expanded into more development-oriented projects for the youth, in education, information communications technology, environment and sustainability, community development, arts and culture, and entrepreneurship.

To ensure a more global perspective in its programs and services, AFI has forged strong and multi-year partnerships with local and multinational institutions. All these partnerships understand the need for more innovative and sustainable strategies to address the needs of the poor and disadvantaged.

Text2Teach is one example of an education project that successfully uses this multi-sectoral consortium approach. AFI is entrusted with the national project management of Text2Teach, and its roles include area identification; schools validation and coordination; and partner resource and public sector counterpart funds mobilization.

GLOBE TELECOM, INC.



Globe is a leading telecommunications company in the Philippines. Its mission is to transform and enrich lives through communications by way of its vision of making great things possible. It strives to create and deliver products that are relevant to its customers' needs and are easy to understand and use.

Globe is the mobile communications service provider of Text2Teach. They provide leadership in the development and exploration of new technologies for content delivery using their telecommunications network.

Globe provides free monthly load allowance for one year to recipient schools of Text2Teach that will be used exclusively for helpdesk concerns and provides feedback about the project to the secretariat. Globe also provides additional

load if there are new or updated materials to be downloaded through the mobile phones within the first year of implementation.

NOKIA



Nokia is committed to connecting people. They combine advanced technology with personalized services that enable people to stay close to what matters to them. Every day, more than 1.2 billion people connect to one another with a Nokia device – from mobile phones to advanced smartphones and high-performance mobile computers.

Today, Nokia is integrating its devices with innovative services through OVI (www.ovi.com), including music, maps, apps, email and more. Nokia's NAVTEQ is a leader in comprehensive digital mapping and navigation services, while Nokia Siemens Networks provides equipment, services and solutions for communications networks globally.

Nokia provides the private sector funding for Text2Teach. They are the lead in the development and enhancement of the Nokia Education Delivery (NED) technology which allows the teachers to select from the hundreds of educational audio/video materials specifically created for the project. NED is configured to match Nokia's 8GB N95 and N86 series mobile phones.

SEAMEO INNOTECH



SEAMEO INNOTECH is principally dedicated to identifying common and unique education problems and needs of Southeast Asian countries and developing innovative and technology-based solutions to address these concerns. The Center aids in educational development within and outside the Southeast Asian region through training and human resource development, research and evaluation, knowledge management and other special programs addressing specific areas of concern in the Southeast Asian educational context.

SEAMEO INNOTECH is principally charged with development and capability enhancement in the Text2Teach project. More than 200 of the educational audio and video materials pre-loaded in the mobile phones were created by SEAMEO INNOTECH specifically for the Text2Teach project and set for use in the Philippine context.

SEAMEO INNOTECH is also in charge of the teacher training, monitoring of project, and ensuring that the educational materials are integrated into the national Basic and long-term impact of the project as an intervention for improving quality of teaching and learning.

DEPARTMENT OF EDUCATION



The Department of Education is a national government agency committed to a culture of excellence in public service. Believing that the most important resource of the country is its people, DepEd makes the task of educating the Filipino child its singular mission.

DepEd, through its regional and division offices, recommends possible recipient schools for Text2Teach. DepEd allow its master teachers to participate in the content development of Text2teach materials and in attending the training activities for Text2Teach implementation.

DepEd takes over-all responsibility for formulating policies and ways and means to raise resources and to assign people to sustain project implementation.

II. THE TEXT2TEACH PACKAGE

The Text2Teach package includes the following:



**Mobile Phone & Nokia
Education Delivery**



RCA / Video Cable



Globe SIM Card



Teacher's Guide



Television Set



**Text2Teach User's
Manual**



Headset



Li-Ion Battery



Phone Charger

DEFINITIONS:

- **Mobile Phone** – Mobile device where the NED application and videos are stored. Text2Teach requires phones with at least 8GB memory capacity with TV output capability.
- **Nokia Education Delivery (NED) software** – The software installed in the mobile phone used to access and download the educational video/audio materials.
- **RCA / Video cable** – The cable that connects the phone to the TV.
- **Globe SIM (Subscriber Identity Module) Card** – Electronic card provided by Globe Telecom. The card is inserted into the mobile phone and provides a unique ID to the phone and enables the user to send and receive calls or text messages. Part of Globe's commitment is to provide P150 free monthly pre-paid load for one year from date of deployment of the phones to the schools.
- **Teacher's Guides** – A guide to help you facilitate lessons of the particular educational video.
- **User's Manual** – A user's guide intended to help you understand how to operate and troubleshoot the various Text2Teach components.
- **Television Set** – A 29-inch colored display device into which the mobile phone is connected to enable the viewing of the video materials by an entire class.
- **Headset** – Phone accessory that can be used to view the videos in private, without disturbing others.
- **Li-Ion Battery** – Mobile phone battery made of Lithium-Ion, which is a type of rechargeable battery. This should always be inserted to your phone to make it power on and function as needed.
- **Phone Charger** – Device used to charge the mobile phone's battery.

III. THE MOBILE PHONE

A. Different Keys of the Phone

In Vertical Position

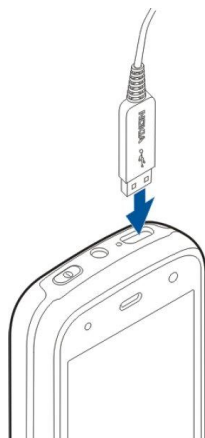


In Horizontal Position



B. Charging the Mobile Phone

1. Connect the charger that came with the mobile phone package, to a 220V wall outlet.
2. Connect the power cord to the device. If the battery is completely discharged, it may take a while before the charging indicator starts scrolling.
3. When the battery is fully charged, the charging indicator stops scrolling. Disconnect the charger from the device, then from the wall outlet.





C. Re-setting the Mobile Phone

When to reset the Mobile Phone

If you encounter the following problems, you need to reset the mobile phone:

1. The video stops or freezes while playing.
2. Nothing happens on the phone screen, even if you press any key on the phone's keypad.
3. There is no Text2Teach picture or nothing appears on the TV screen.

How to Reset the Mobile Phone

1. Press and hold the  button to power it off.
2. With the back of the device facing you, remove the back cover by pressing the release button, and lifting it from the bottom end of the device and remove the battery.
3. Insert the battery again, and press the cover down until the cover locks into place.
4. Press and hold the  button to power it on.



Step 1 & 4



Step 2

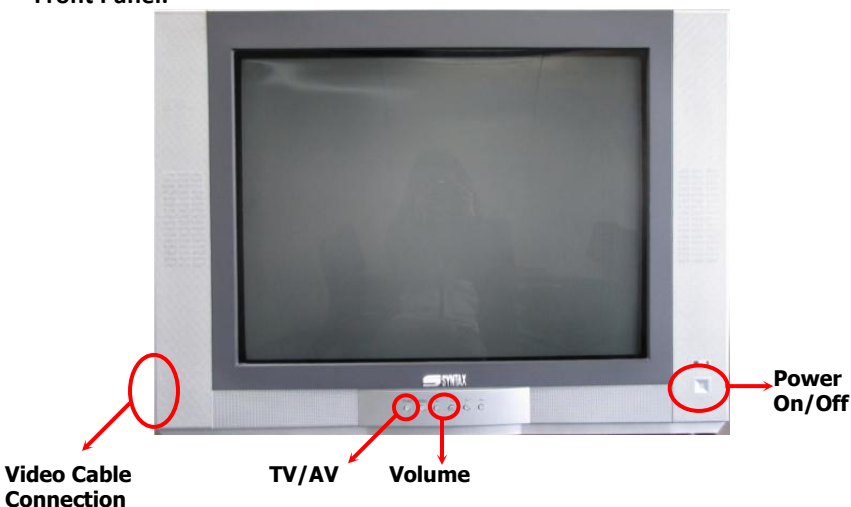


Step 3

IV. THE TV SET

A. Parts of the TV Set

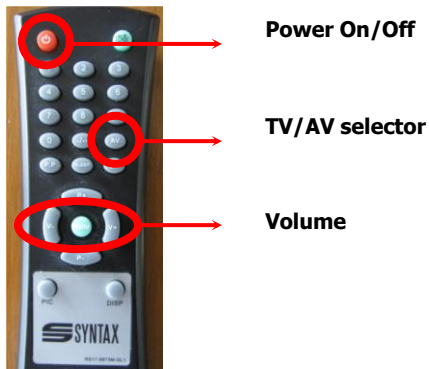
Front Panel:



Back Panel:



Remote Control:



B. Connecting the Phone to the TV

Connecting the phone to the TV is easy. All you need is the mobile phone, RCA cable and TV.

Step 1

Using the RCA cable that came with your phone, connect the TV out to the mobile phone. The TV out plug is the single plug on the cable. Note that the other end of the cable has three plugs marked with the colors red, white and yellow.



Step 2

The left side and rear of the TV has a port marked “TV1” or “Video1”. These ports are color-coded (red, white and yellow). Using the RCA cable, match the 3 plugs of the cable according to color.

Example: Plug the red plug on the cable to the red port on the TV.



Step 3

Using the remote or TV/AV button, press the TV/AV button until you reach video02

If the TV screen displays the same output as that on the phone screen, then your connection is correct and successful and you are now ready to show the video lesson for the day to your class.



V. USING NOKIA EDUCATION DELIVERY (NED)


A. Nokia Education Delivery (NED)



- The Nokia Education Delivery or NED application uses mobile technology to deliver educational videos to remote, hard-to-reach areas.
- The videos can be used for any educational purpose, from school lessons to training sessions.
- Using a mobile phone, teachers and trainers can access and download videos from a constantly updated catalog over a mobile network.
- The Nokia device with TV-out connector can be connected to a normal TV or a video projector to play the videos to a class. For the Text2Teach package given to you, the mobile device is the Nokia N86 8MP.
- The NED-based platform has replaced the original satellite based delivery in the Text2Teach program. SMS is not used for lesson ordering but very useful for any technical or lessons-related support assistance.
- The first batch of schools that started to use the NED-based platform was in Tanzania in 2008. Deployment in the Philippines started in March 2009. There is a similar program in its start-up phase in Chile.

B. Running NED

Step 1 (Option 1)

- On Active Standby Screen (Figure A.1.1), select the NED  logo by pressing the right directional key.
- When you have selected the logo, press the center key to run NED.

Step 1 (Option 2)

On Active Standby Screen, press the right soft key to run NED.



Figure A.1.1

Step 2

The display goes to the “Nokia Education Delivery” welcome screen (Figure A.1.2). After a few seconds, a drop-down menu will appear.



Figure A.1.2

C. Viewing the videos

After the NED welcome screen, the next screen is a drop-down main menu (Figure B.1.1).

Playing a Video

Step 1

Choose 'Video', and then press the center key.



Figure B.1.1

Step 2

The display goes to the 'Choose A Catalog' screen (Figure B.1.2). Using the Directional Keys (up and down), choose the desired grade level (5th Grade / 6th Grade), and then press the center key.



Figure B.1.2

Step 3

The next screen lets you Choose A Subject (Figure B.1.3).

Again, using the directional keys, choose the subject you want to teach.

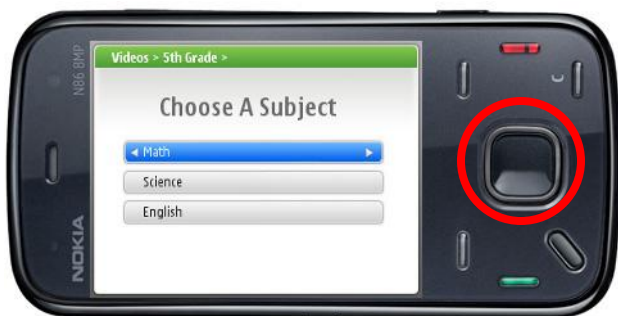


Figure B.1.3

Step 4

The next screen shows the title of the videos for the subject you have chosen (Figure B.1.4). Using the directional keys, choose the desired video.



Figure B.1.4

Step 5

Press the center key to play the selected video.



Figure B.1.5

Searching for a Video

NOTE: You should be at the 'Choose A Video' Screen to use the search video feature.

Step 1

Press the left soft key located on the lower left side when phone is held on horizontal position (Figure B.1.6) to access the Search Videos feature.



Figure B.1.6

Step 2

Press the center key to enter the Video Code desired. (Figure B.1.7)



Figure B.1.7

Step 3

Type the video code. Make sure the code you are entering is within the catalog you chose.

For Example:

The code 'EM9511' is under Grade 5, Math. This is in the teacher's guides.

You may delete a character if you mistyped a letter by pressing the clear key to delete a character.

After typing the code, press the center key.



Figure B.1.8

Step 4

Press the center key again to play the selected video. (Figure B.1.9)



Figure B.1.9

Deleting a Video

USE THIS OPTION ONLY UPON THE ADVISE / INSTRUCTION OF THE TEXT2TEACH SECRETARIAT.

NOTE: You should be at the 'Video title' Screen to delete a video.

Step 1

Press the left soft key to show the pop-up menu. (Figure B.1.10)

Using the directional keys (up and down), select the Remove Video and then press the left soft key.



Figure B.1.10

Step 2

Choose the 'Yes', to delete the video, and 'No', to retain the video.



Figure B.1.11

Volume Control

To increase/decrease the volume, press the up and down directional key (Figure B.1.12) when the video is in play mode.



Figure B.1.12

Playback Options



Figure B.1.13

C. Downloading Videos

This feature is applicable when additional or updates educational videos have been developed. The videos can be accessed by the schools using Globe's mobile Internet technology

USE THIS OPTION ONLY UPON THE ADVISE / INSTRUCTION OF THE TEXT2TEACH SECRETARIAT.

Note: Please setup first the GPRS setting of the phone before proceeding (Refer to the Configure the GPRS Setting in N86).

Setting Server URL

Step 1

Using the up and down directional keys, choose 'Options', and then press the center key (Figure C.1.1).



Figure C.1.1

Step 2

Using the up and down directional keys, choose the server settings (Figure C.1.2), and then press the center key.

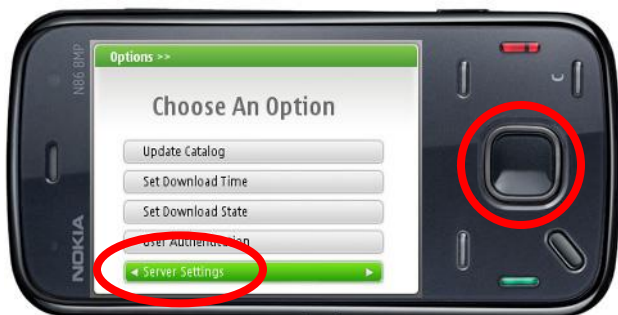


Figure C.1.2

Step 3

Enter the Server URL (**http://203.177.165.52/ideaf62c79**) and then press 'OK' (Figure C.1.3).



Figure C.1.3

Updating the Catalog

This is done when a new or updated video, or a new category (e.g., new subject or grade level) has been added.

Note: If downloading a video will be done for the first-time, first go to the Main Menu > Catalogs (Page 27, Downloading Videos, step 1) and you will be asked to select access points. Select 'myGlobe CONNECT' and wait for the catalog to be setup.

Proceed to the Update the Catalog.

Step 1

In the Main Menu (Figure C.1.4), choose 'Options', and then press the center key.



Figure C.1.4

Step 2

The display goes to the 'Choose An Option' screen (Figure C.1.5).

Using the up and down directional keys, choose 'Update Catalog', and then press the center key.

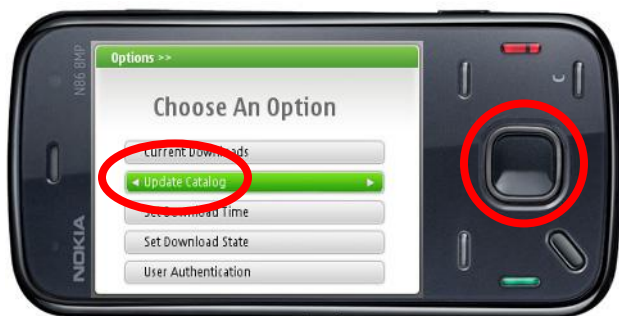


Figure C.1.5

Step 3

The display goes to the 'Select access point' screen (Figure C.1.6).

Using the up and down directional keys, choose 'myGlobe CONNECT', which is the applicable mobile Internet connection, and then press 'Select'.



Figure C.1.6

Step 4

Once the updating of the catalog is done, The screen on Figure C.1.7 will be displayed. Press the right soft key to go back.

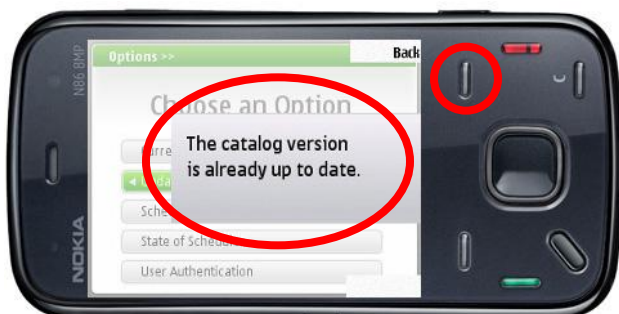


Figure C.1.7

Downloading Videos

This feature is applicable when additional or updated educational videos have been developed.

Step 1

Choose 'Catalog' using the up and down directional keys, and then press the center key (Figure C.1.8).



Figure C.1.8

Step 2

The display goes to the 'Choose A Catalog' screen.

Using the up and down directional keys, choose the desired grade level (5th Grade/6th Grade), and then press the center key. (Figure C.1.9)



Figure C.1.9

Step 3

The next screen lets you choose the subject (Science, Math, English). (Figure C.1.10)

Using the up and down directional keys, choose the desired subject and then press the center key.

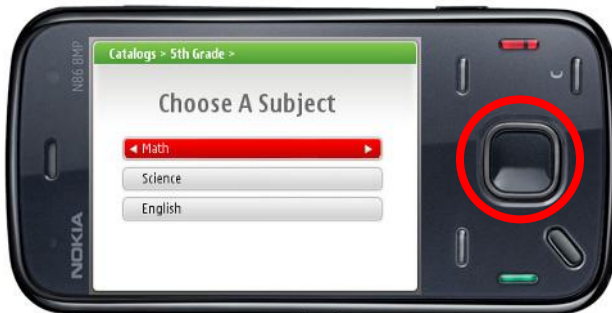


Figure C.1.10

Step 4

The next screen shows the title of the videos for the subject you have chosen. (Figure C.1.11)

Using the up and down directional keys, choose the desired video, and then press the center key.



Figure C.1.11

Step 5

Press the center key to mark the selected video (Figure C.1.12).

If the selected video has not yet been downloaded, i.e., not yet stored in the phone, the status you will see is "Mark to Download" (Figure C.1.12).

Press the center key to start download process.



Figure C.1.12

Step 6

The status shown will be changed from 'Mark To Download' to 'Download Marked'. (Figure C.1.13)

Press the left soft key to download the video.

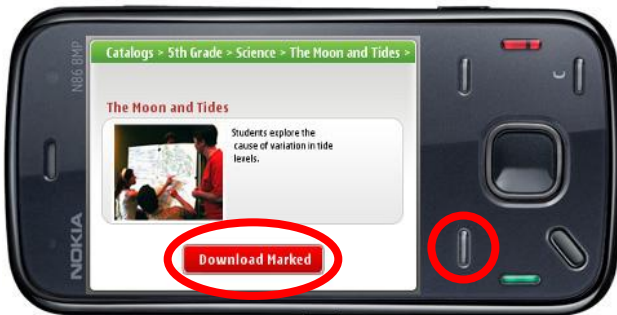


Figure C.1.13

Step 7

Using the up and down directional keys, choose the 'Download Now', to download the video and then press 'Select'.

To cancel the downloading, select the 'Unmark Download' and then press 'Select' using the left soft key. (Figure C.1.14)



Figure C.1.14

Step 8

After choosing the 'Download Now', press 'Yes', if you intend to download the video. Press 'No', if not.



Figure C.1.15

Step 9

When the downloading is finished, the status is changed from 'Download Marked' to 'Downloaded'. (Figure C.1.16)

This means that the video has now been downloaded and stored in the mobile phone.

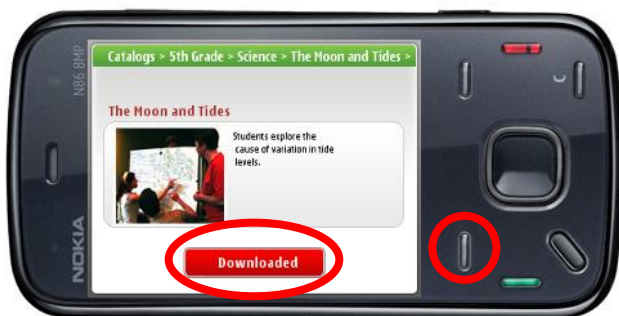


Figure C.1.16

To add the newly downloaded video to the Catalog of videos in NED, press the left soft key, and then press 'Select'. (Figure C.1.17)



Figure C.1.17

Status of the Download/s

This feature shows the status of downloading, and tells you whether it was successful or not.

Step 1

In the main menu, choose 'Options', and then press the center key. (Figure C.1.18)



Figure C.1.18

Step 2

The display goes to the 'Choose An Option' screen.

Using the up and down directional keys, choose the 'Current Downloads' (Figure C.1.19) option, and then press the center key.



Figure C.1.19

Step 3

The next screen shows the list of the current videos that are being downloaded.



Figure C.1.20

Using the up and down directional keys, choose the desired video in the Current Download list (Figure C.1.20).

Then press the center key to view the download percentage. (Figure C.1.21)



Figure C.1.21

D. Statistics

This feature is useful for monitoring usage of the videos. It also shows the number of times a video was viewed, and which videos are most often used and which are not.

This is a useful tool for monitoring the use of Text2Teach videos.

View Statistics

Step 1

Using the up and down directional keys, choose 'Statistics', and then press the center key. (Figure D.1.1)

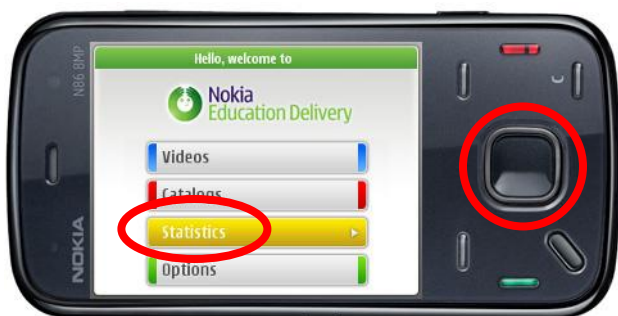


Figure D.1.1

Step 2

Use the up and down directional keys to navigate the statistics list (Figure D.1.2).



Figure D.1.2

E. Options

Set the Download Time

This feature allows you to choose the time when you would like to download the videos.

Step 1

Using the up and down directional keys, choose 'Options', and then press the center key. (Figure E.1.1)



Figure E.1.1

Step 2

The display goes to the 'Choose An Option' screen.

Using the up and down directional keys, choose the 'Set Download Time', and then press the center key (Figure E.1.2).

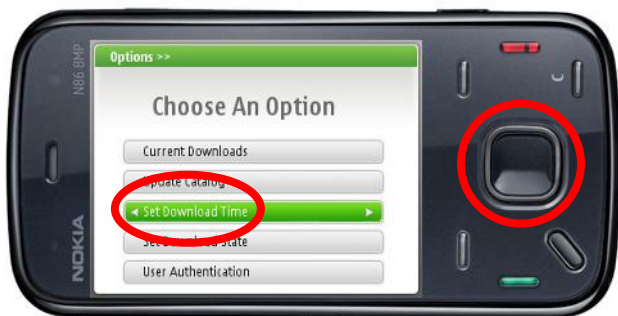


Figure E.1.2

Step 3

Finally, enter the desired time on the pop-up window using the phone's keypad (Figure E.1.3).



Figure E.1.3

Activate / Deactivate Download State

In relation to setting the download time, this feature lets you activate/deactivate the time you set for downloading.

Step 1

Using the up and down directional keys, choose 'Options', and then press the center key. (Figure E.1.1).

Step 2

Choose the 'Set Download State', and then press the center key. (Figure E.1.4)

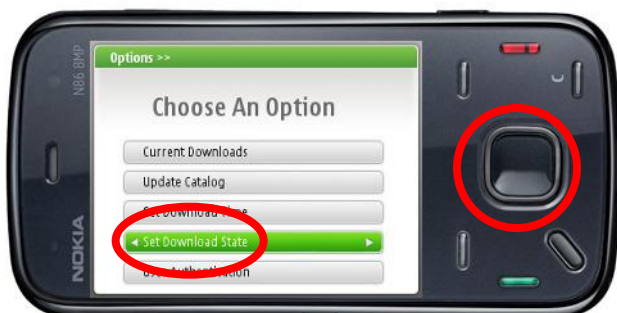


Figure E.1.4

Step 3

Choose 'Yes' using the right soft key to activate the Download Scheduler, or 'No' using the left soft key to deactivate the Download Scheduler. (Figure E.1.5)

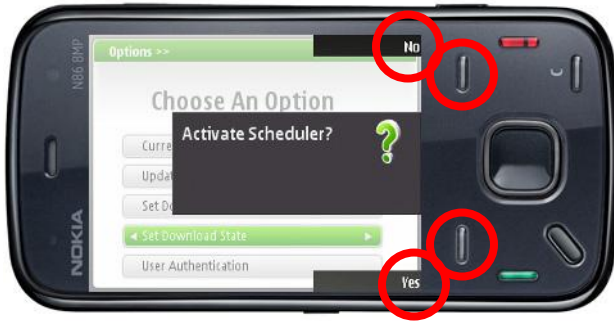


Figure E.1.5

F. Exiting NED

To close the NED, simply press the right soft key several times (Figure F.1.11) until you reach the default screen (Figure F.1.12).



Figure F.1.11



Figure F.1.12

VI. VIDEO RECORDING FEATURE

A. Recording a Video Clip

This feature allows you to record a video clip in the mobile phone.

USE THIS OPTION ONLY UPON THE ADVISE / INSTRUCTION OF THE TEXT2TEACH SECRETARIAT.

Step 1

On active standby screen, press the menu button. (Figure A.2.1)

Step 2

The display goes to main menu screen. (Figure A.2.2) Using the directional keys (up, down, left and right), go to the applications icon, and then press the center key.



Figure A.2.1



Figure A.2.2

Step 3

The display goes to Applications menu screen. (Figure A.2.3).

Using the directional keys (up, down, left and right), go to the camera icon, and then press the center key.



Figure A.2.3

Step 4

The display goes to viewfinder screen. (Figure A.2.4) If the camera is in image mode, the camera icon is shown at the upper right corner of the screen. Using the directional keys (up and down), choose the switch to video mode icon from the active toolbar and then press the center key.



Figure A.2.4

Step 5

The display goes to video viewfinder screen. (Figure A.2.5).

To start recording press the capture key, located at the top right corner of the phone. The red record icon is shown and a tone sounds, indicating that recording has started (Figure A.2.6)



Figure A.2.5

To pause recording at any time, press Pause (right soft key). Select continue, (right soft key), to resume video recording.

To zoom in or out of the subject, use the directional keys (left and right).

To stop recording, press Stop (left soft key). The video clip is automatically saved to the Images & videos folder of the Gallery. The maximum length of the video clip depends on the available memory. (Figure A.2.6)

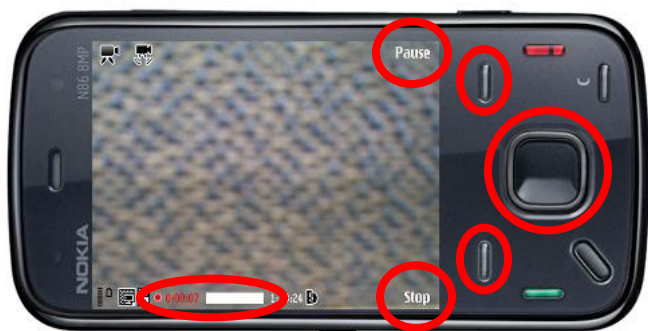


Figure A.2.6

B. Video Setting

Step 1

On viewfinder screen, press Options (left soft key). (Figure B.2.1)



Figure B.2.1

Step 2

The display goes to the Options menu. (Figure B.2.2)

Using the directional keys (up and down), select Settings and then press the center key or the Select (left soft key).



Figure B.2.2

Step 3.

The display goes to the Video settings. (Figure B.2.3)

Using the directional keys (up and down), choose the desired settings to change, and then press the center.

To go back to the viewfinder screen, press the Back (right soft key).

The following are the Video Settings options:

- *Video Quality*
 - TV high quality – to view the video on a compatible TV or PC (Recommended)
 - TV normal quality – to view the video on a compatible TV or PC
 - E-mail high quality
 - E-mail normal quality – standard quality for playback through your handset
 - Sharing quality – to send video clip using a multimedia message.
- *Video Stabilisation* – select On to reduce camera shaking when recording the video.
- *Audio recording* – select Mute if you do not want to record sound
- *Add to album* – select whether you want to add the recorded video clip to a certain album in the Gallery. Select Yes to open a list of available albums
- *Show captured video* – select whether you want the first frame of the recorded video clip to be displayed after the recording stops.
- *Default video name* – define the default name for captured video clips.
- *Memory in use* – Select where you want to store your videos. (Recommended: mass memory)
- *Restore camera settings* – select Yes to return the default values to the camera settings.



Figure B.2.3

C. View a Video Clip

After Recording

Note: This is only available if 'Show Captured Video' is set to 'On' in the video settings.

To immediately play the video clip you just recorded, select the Play icon from the active toolbar at the right side of the screen using the up and down directional keys, and then press the center key.

If you do not want to keep the video, using the up and down directional keys, select the Delete icon from the active toolbar and then press the center key.

To send the video clip via multimedia message, e-mail, or other connection methods, using the up and down directional keys, select the Send icon from the active toolbar and then press the center key.

To return to the Viewfinder to record a new video clip, press Back (right soft key or the capture key).



Figure C.2.1

Gallery

Step 1

On active standby screen, press the Menu button. (Figure C.2.2)

Step 2

The display goes to main menu screen. (Figure C.2.3)

Using the directional keys (up, down, left and right), go to the Photos icon, and then press the center key to open.



Figure C.2.2



Figure C.2.3

Step 3

The display goes to the Photos menu (Figure C.2.4).

Using the up and down directional keys, select 'All' and then press the center key to open.

Step 4

The next screen displays the listing of all the videos and images file in the mobile phone (Figure C.2.5)

Using the directional keys (up, down, left and right), select the desired videos and then press the center key to open.

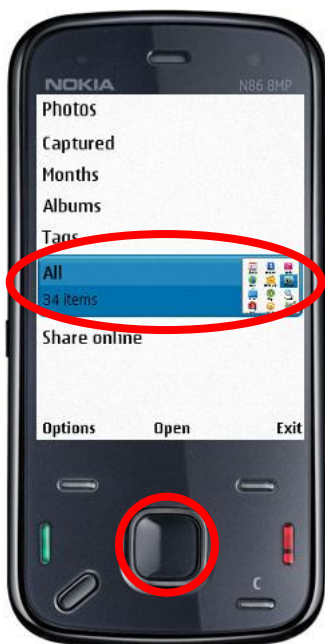


Figure C.2.4



Figure C.2.5

Step 5

The display goes to video play screen. (Figure C.2.6)

Using the up and down directional keys, select the Play icon from the active toolbar at the right side of the screen and then press the center key to play.



Figure C.2.6

D. Editing a Video Clip

The video editor supports .3gp and mp4 video file formats, and .aac, .amr, .mp3, and .wav audio file formats. It does not necessarily support all features of a file format or all the variations of file formats.

Step 1

On Images & Videos screen (Figure D.2.1), using the directional keys (up, down, left and right) select the desired videos to be edited, and then press the Options (left soft key).

Step 2

The display goes to the Options menu. (Figure D.2.2)

Using the up and down directional keys, select Edit, and then press select (left soft key).



Figure D.2.1

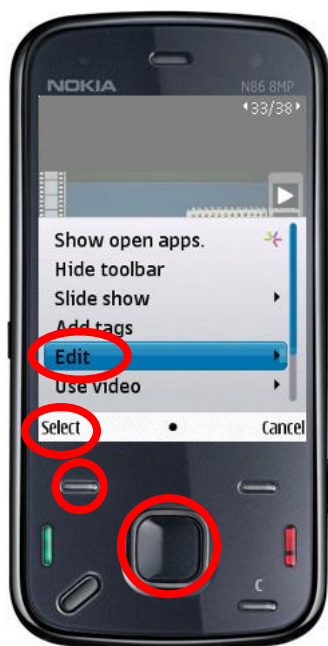


Figure D.2.2

Step 3

The display goes to the editing options. (Figure D.2.3)

Using the up and down directional keys, select the desired editing option (Merge, Change sound, Add text and Cut). Press Select (left soft key).

Editing options:

- Merge – to add an image or a video clip to the beginning or end of the selected video clip
- Change sound – to add a new sound clip, and to replace the original sound in the video clip
- Add text – to add text to the beginning or end of the video clip
- Cut – to trim the video and mark the sections you want to keep in the video clip



Figure D.2.3

E. Transfer Video clips to Computer

You can use your device with a variety of compatible PC connectivity and data communications. With data transfer, you can transfer the video clips to the PC.

Note: To avoid corrupting data or possible virus infection, do not disconnect the USB data cable during data transfer.

Step 1

Using the USB cable, connect the mobile phone to a compatible computer.

When the device asks which mode to use, select Mass Storage. In this mode, you can see your device as a removable hard drive in your computer.

Step 2

When the mobile phone is already connected to the PC, the removable drive icon will appear in the system tray of the PC at the lower right corner of the desktop screen. (Figure E.2.2)

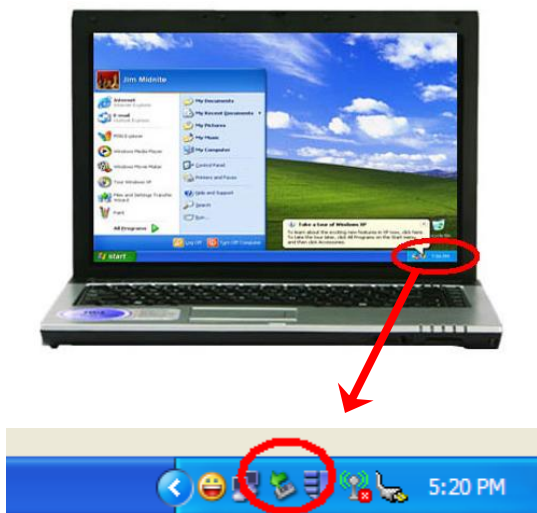


Figure E.2.2

Step 3

At the lower left corner of the computer screen, click on Start. The Start menu will appear. Choose 'My Computer' by clicking on this option. (Figure E.2.3)

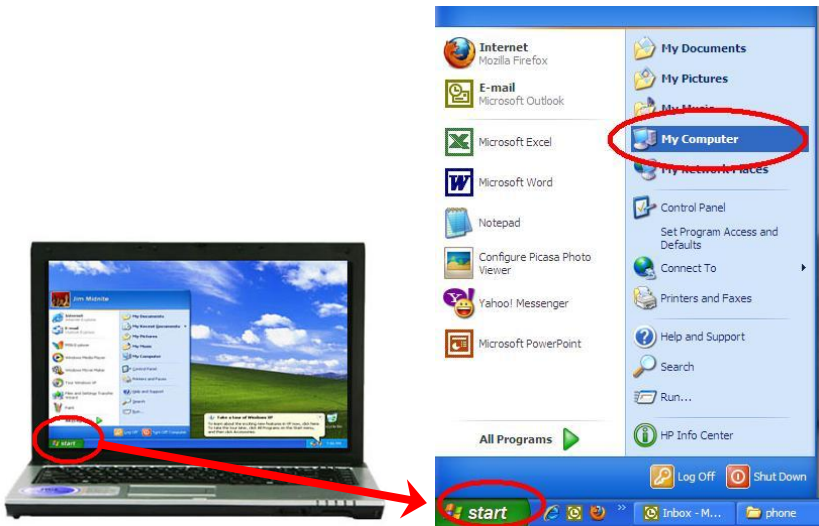


Figure E.2.3

Step 4

The display goes to My Computer folders. (Figure E.2.4)
Go to the Removable disk icon, and double-click it to open.

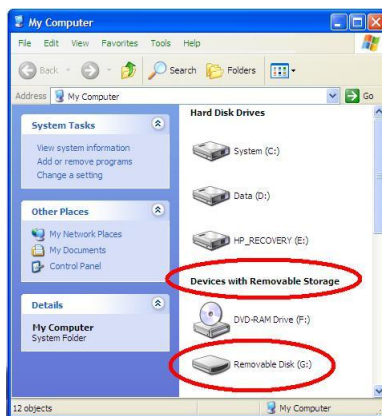


Figure E.2.4

Step 5

The display goes to the Removable disk folder. (Figure E.2.5)
Go to the Videos icon, and double-click it to open.

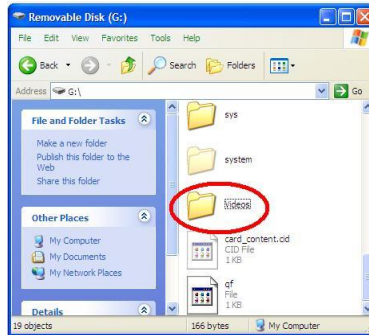


Figure E.2.5

Step 6

The display goes to Videos folder. This is where the recorded videos clips are saved. (Figure E.2.6)

Browse the videos folder and select the files/folders you want to transfer to the computer.

Right Click your chosen file/folder, and select copy.
Then, paste it to your 'My Document' folder.

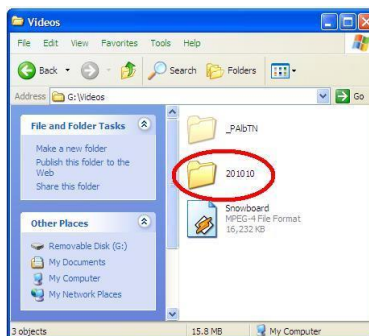


Figure E.2.6

Step 7

To properly end the connection from the computer without damaging the phone's memory card, use the 'Safely Remove Hardware' wizard in Microsoft windows located at the lower right corner of the desktop screen.



Figure E.2.7

Click the removable drive icon or the 'Safely Remove Hardware', (Figure E.2.7) and choose the 'Safely remove USB Mass Storage Device'. (Figure E.2.8)

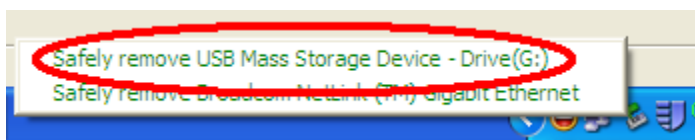


Figure E.2.8

Step 8

When the 'Safely Remove Hardware' wizard is successful a pop message will appear as shown in Figure E.2.9.

Remove the connection of the phone to the computer.

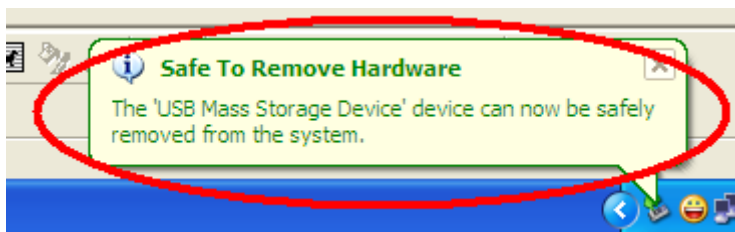


Figure E.2.9

VII. ADDITIONAL INFORMATION

A. *Configuring the GPRS Setting*

Before proceeding to NED downloading, please configure the Globe GPRS setting of the mobile phone first.

Step 1

Text **Go** <space> handset model to **2951**

Example:

Text **Go Nokia N86** then send to **2951**

Step 2

Wait for the configuration settings, which will be sent to your phone within the next 24 hours. You may also call Globe's customer service hotline at 211 from your mobile phone to request for your MMS/GPRS settings free of charge.

Step 3

Open the configuration settings received and saved them as your default settings. Enter 1234 if you are prompted for a pin.

Step 4

Text **TIME** to **1111** for time-based charging of the Internet. This means that the downloading cost is charged according to the duration it takes to download a video, which is at PhP 5.00 per 15-minute Internet or video download time. Otherwise, downloading might be charged according to the data/video size (per kilobyte-based charging), which is much more expensive.

Step 5

Wait for the confirmation message, which will be sent to your phone within the next 24 hours.

Step 6

You may now proceed in the NED video downloading process.

B. Equipment Care

1. Use the Text2Teach equipment for Text2Teach purposes only. Please note that a Memorandum of Agreement (MOA) signed by the Text2Teach Alliance, your LGU, and DepEd covers the proper use of the components.
2. If you are experiencing technical problems and other concerns with the Text2Teach package, please contact **FIRST** the text2teach helpdesk at **0917 561 3585**.
3. The television set is under a 2-year warranty with KOLIN starting from the date of delivery. Please note that the warranty will be void if you send the TV to other repair center. Contact FIRST the Text2Teach helpdesk, if you are experiencing any problems.
4. Always make sure that the phone is fully charged before viewing the videos to avoid inconvenience.
5. When charging the phone, be sure to use the charger that came with the unit.
6. Never expose the phone and TV to extreme sunlight.
7. Make sure to store the phone and TV in a dry and secure place.
8. To view the Text2Teach videos, make sure your TV is in the right video setting by pressing the TV/AV button of your TV remote control repeatedly until you reach 'Video02'.
9. **DO NOT delete** files/data stored in the mobile phone.
10. **DO NOT store/save** pictures and music files to the mobile phone unless you are told to do so.
11. The licensed video materials already consumed a very large amount of the phone's memory. Adding/storing picture, music files, etc. will slow down the phone's performance and can cause inconvenience such as the video stopping/freezing while playing; getting an alert message saying 'The memory is full', etc.
12. Copying/Editing of the licensed video materials is prohibited. It is intended only for the use of Text2Teach trained partner schools. The MOA signed by the Text2Teach Alliance, your LGU, and DepEd covers this.
13. For more information about taking care of the Text2Teach equipment:
 - For the TV, please read the TV manual on "cautions for safety" (page i)
 - For the phone, please read page 148-149 of the manual under "taking care of your device"

C. Green Tips (Energy Saving Tips)

You can make a total difference in your power consumption while learning and enjoying using the Text2Teach Technology.

TV Power-Saving Tips

1. Turn off the TV and other connected devices when not in use.

It's easy to get into the habit of leaving the TV on as "background" when you're not really watching it. While TVs still consume power in standby mode, it's a tiny fraction of what they draw when they're actually on. Old habits die hard, but you'll be saving yourself some money if you remember this tip.

Be careful to power down other connected devices, too, like game consoles and DVD players--which are easy to leave on accidentally even after you turn the TV itself off. A good universal remote that can "power down" the whole system with a single button-press can easily pay for itself in energy savings after a year or so.

2. Turn off the Quick Start option

Some HDTVs and other AV gear have an option called Quick Start or something similar, which allows them to turn on more quickly when you press the power button. The flipside of this mode is that when engaged, it consumes more power (sometimes up to 50 times as much) during standby, which can really add up. Do your energy bill a favor and turn this mode off. That few extra seconds' wait for the TV to warm up is well worth it.

3. Turn down the LCD's backlight

Many LCDs give you the ability to control the intensity of the backlight in the TV. By turning down the backlight, you'll lower power consumption, but also make the TV less bright. While retail stores love to turn the backlights up all the way for their displays, we find that we get the best image quality when we turn down the backlight significantly.

4. Turn on the power saver mode

Your 29-inch Syntax TV comes with a power saver mode that's designed to cut down the power consumption. (Performance of this mode varies from model to model, with varying effects - from drastic to only a slight savings.) The only downside is that the power saver mode usually makes the TV less bright, but sometimes this has a beneficial effect on the image quality, especially with the room lights turned off, in which case it's a win-win situation.

5. Reduce light output with other settings

Most TVs are very bright by default, which uses a lot of energy. You can turn down the light output--which is traditionally controlled primarily by "contrast" or "picture" controls--along with several other adjustments that will maximize the performance of your TV.

6. Control room lighting

Many of these tips make the TV less bright, but that can be compensated by controlling the light in your room. While this may be a little overboard just for power consumption, limiting the room lighting also goes a long way toward creating the "theater" experience, as well as getting the most out of your TV.

Mobile Phone Energy Saving Tips: Turn your cell phone green

1. Unplug Your Phone Charger When Unused

Did you know your phone's charger still draws energy even when it's not plugged into your phone? Unplug it when it's not in use.

2. Minimize Your Phone's Backlight

If your phone's backlight is illuminated for longer than you need, you're wasting energy. Reduce it so you're only using what's necessary. Your phone's battery will thank you.

3. Charge Your Phone When Necessary

Many people are accustomed to charging their cell phones every night whether or not the battery has been depleted. To be less wasteful, don't charge your phone until the battery really needs it.

VI. TEXT2TEACH SECRETARIAT

For queries or technical support, please text or send to:

Mario A. Deriquito

Senior Director

Deriquito.ma@ayalafoundation.org

Marisse Catangay

Manager

M: (0917) 840-6958

catangay.mc@ayalafoundation.org

JR Demecais

Senior Development Specialist

M: (0917) 860-7764

demecais.ig@ayalafoundation.org

Melissa Yamson

IT Associate

M: (0917) 561-3585

yamson.ml@ayalafoundation.org

Kit Travina

Development Associate

M: (0917) 587-5936

Travina.hh@ayalafoundation.org

Education and Leadership Development

AYALA FOUNDATION, INC.

10th Floor BPI Main Building

Ayala Ave. cor. Paseo de Roxas, 1226 Makati City

T: (02) 752-1101 loc. 85 or 1067 / Direct: (02) 752-1185 /

(02) 752-1067

