

User's Manual

Model no.: MS-7602

SOLAR HOUSE NUMBER



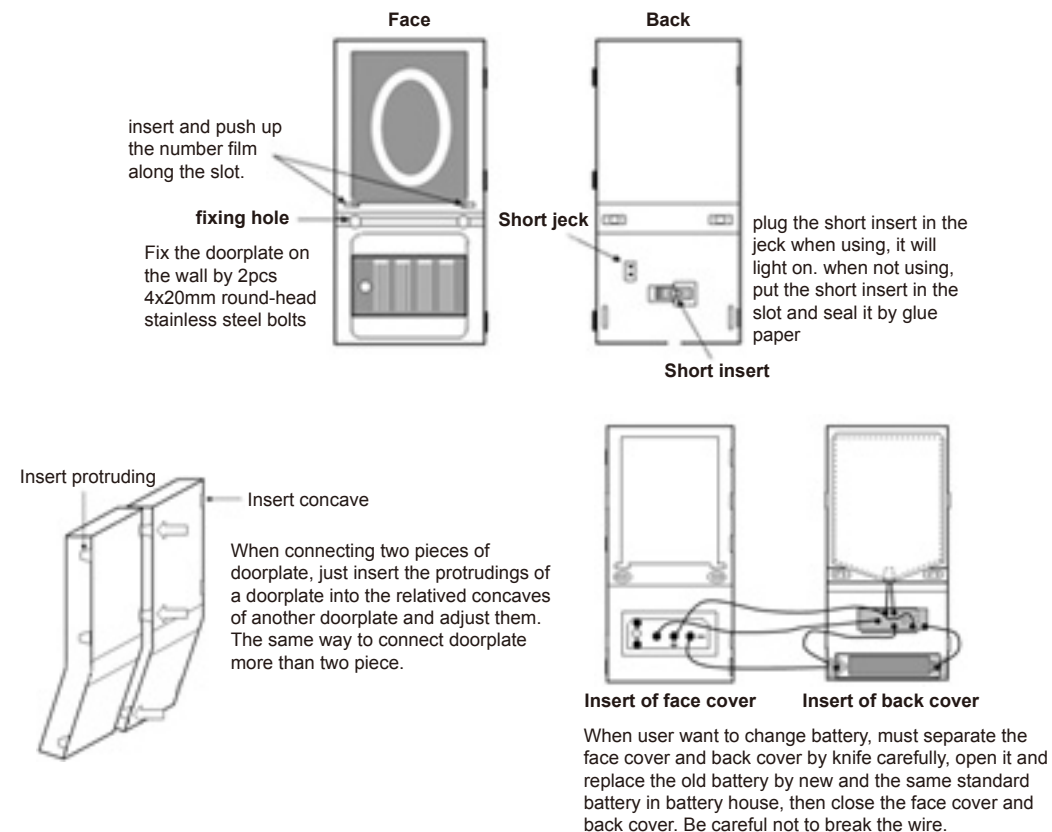
info@missolar.com
made in China

User's Manual

SUMMARIZE

The solar doorplate is a number direction board used solar energy. It can collect sunshine in the daytime and convert sunlight into electric energy, then store power in battery, the LED will light on automatically when it is dark at night.

FIGURE AND INSTRUCTION



MAIN TECHNICAL PAREMETERS

Solar panel: crystalline silicon 59.5mm×30mm 1.9V / 50mA
 Battery: 1pc AA 1.2V Ni - cd 600mAh
 Light source: Super bright LED
 Operating current: red, green: 10±1mA (when operating voltage is 1.3V)
 white,yellow,blue: 11±1mA (when operating voltage is 1.3V)
 Work temperature: -30°C ~ 60°C
 Work humidity: 95%
 Weight: 100g
 Size: 185.8mm×75mm×19mm

ATTENTION

1. When not using the doorplate, should put the short jack in the short jack slot and seal with glue paper and store in dark and dry place.
2. Before using or not using more than two months, to avoid damaging the battery, the doorplate should be solarized by facing sunshine for three days and charge the battery, while the short insert must be inserted in the short jack.