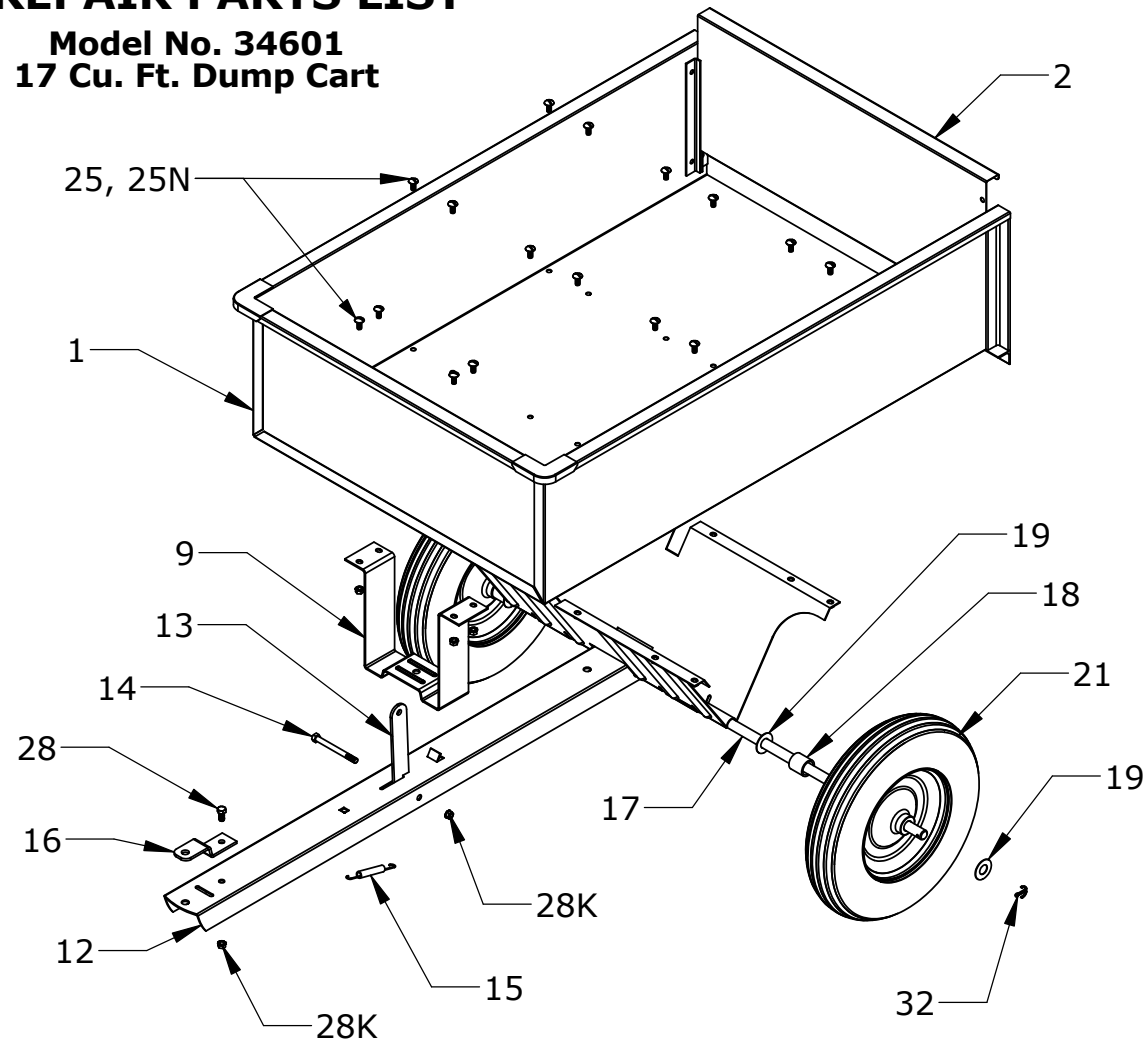


REPAIR PARTS LIST

Model No. 34601
17 Cu. Ft. Dump Cart



OHIO STEEL INDUSTRIES

34601 17 CUBIC FOOT LAWN CART USER GUIDE AND PARTS LIST



REF. NO.	PART NO.	AMT.	DESCRIPTION	REF. NO.	PART NO.	AMT.	DESCRIPTION
1	17-1	1	CART BODY	18	17-18	2	SPACER
2	17-2	1	TAIL GATE	19	17-19	4	*AXLE WASHER
9A	17-9A	1	FRONT SUPPORT	21	17-21	2	TIRE
11	17-11	1	AXLE HOLDER	25	17-25	16	*BOLT 5/16 X 3/4 PAN
12	17-12A	1	HITCH ASSEMBLY	25N	17-25N	16	*HEX NUT 5/16
13	17-13A	1	LATCH POST	28	17-28	1	*BOLT 3/8 X 3/4 HEX
14	17-14A	1	*LATCH BOLT	28K	17-28K	1	*KEPS NUT 3/8
15	17-15A	1	LATCH SPRING	32	17-32	2	*COTTER PIN 1/8 X 1 1/2"
16	17-16A	1	HITCH BRACKET	33	17-33	1	USER GUIDE
17	17-17	1	AXLE				

When ordering repair parts always give the following information.
PRODUCT NAME, MODEL NUMBER, PART NUMBER and PART DESCRIPTION.

* Denotes standard hardware items that can be purchased locally.

CAUTION:
READ AND FOLLOW
ALL SAFETY RULES
AND INSTRUCTIONS
BEFORE USING
THIS EQUIPMENT.

OHIO STEEL INDUSTRIES
2575 FERRIS ROAD
COLUMBUS, OH 43224-2597
34601-REV-A 12_04

TOOLS REQUIRED

- 1/2" wrench
- large blade screw driver
- pliers
- cordless drill

MAINTENANCE

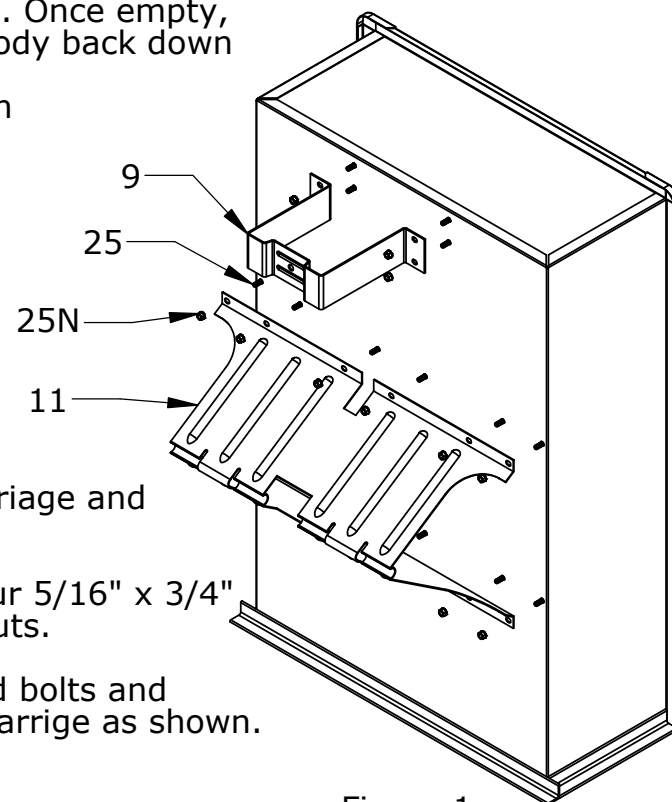
- Check tire pressure regularly. 14 p.s.i. is recommended.
- Grease wheels regularly.
- Keep cart clean and dry to prevent rust and corrosion.

SAFETY RULES

- DO NOT CARRY PASSENGERS IN THE CART.
- DO NOT TOW THIS CART ON PUBLIC ROADS.
- USE LOW SPEED - 5MPH-WHEN PULLING HEAVY LOADS OR OVER ROUGH TERRAIN.
- BE CAREFUL ON STEEP GRADES.
- LOAD CAPACITY IS 1500 POUNDS

OPERATION

- With cart attached to tractor, remove tailgate, and then pull back on latch bar. Cart body will tilt backwards, dumping contents. Once empty, replace tail gate, then pull cart body back down until it latches.
- Follow all operating instructions in tractors user manual.

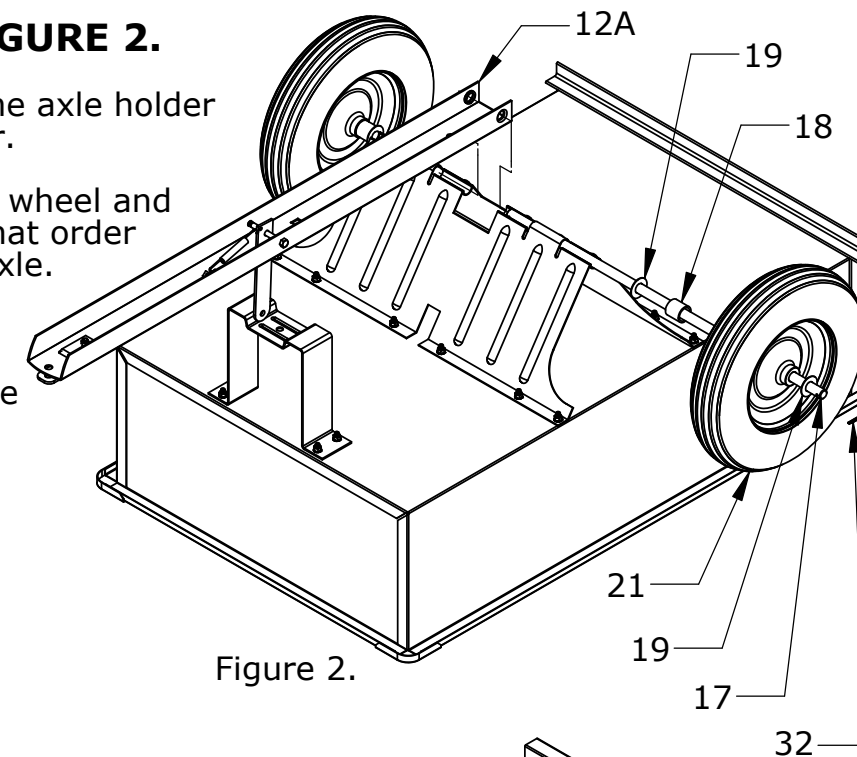


ASSEMBLY - SEE FIGURE 1.

- Position Cart to add the undercarriage and the front support.
- Attach the front support using four 5/16" x 3/4" pan head bolts and 5/16" keps nuts.
- Use twelve 5/16" x 3/4" pan head bolts and 5/16" keps nuts to attach undercarrige as shown.

ASSEMBLY - SEE FIGURE 2.

- Slide axle through the axle holder and hitch and center.
- Add washer, spacer, wheel and another washer in that order to each end of the axle.
- Insert cotter pins through holes in axle and lock in place by spreading ends.



ASSEMBLY - SEE FIGURE 3.

- Turn cart upright on wheels.
- Slide tail gate into position.
- Assembly is complete.

