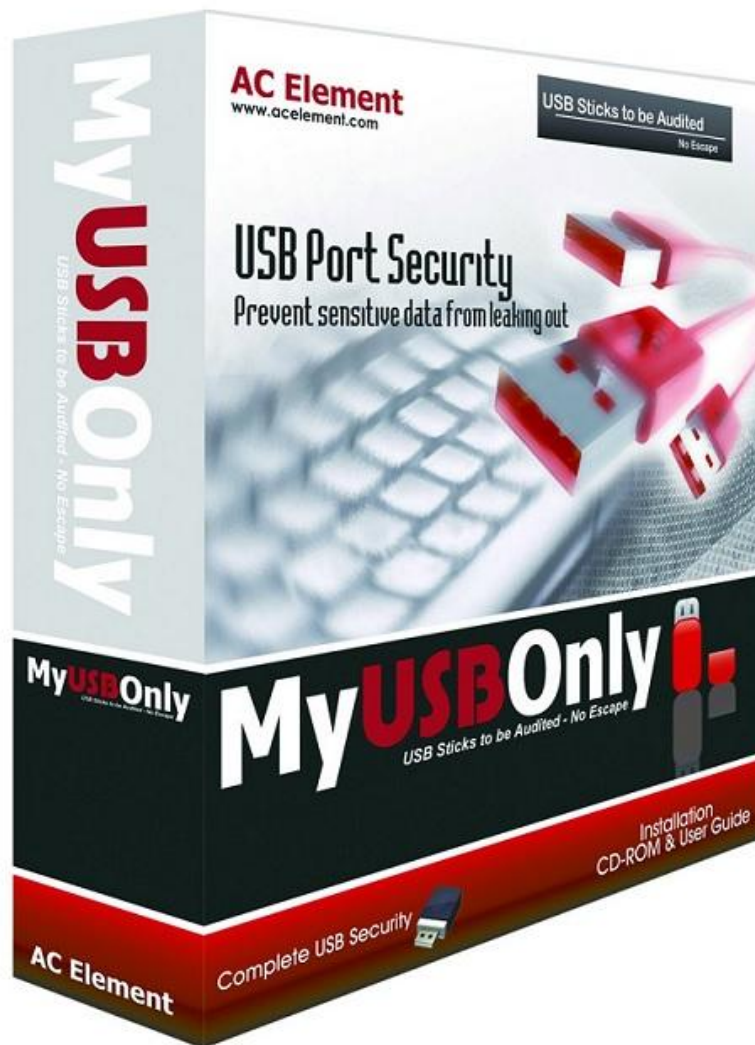




© MyUSBOnly, 2014



User's Manual



Copyright © AC Element Company 2002-2014. All Rights Reserved



Table of Contents

Introduction	p.3-4
System Requirements	p.4
Important Notes	p.5
Buy & Install MYUSBOnly paid version	p.5-6
Upgrade to MyUSBOnly paid version	p.6-7
Silent Unattended Installations	p.7
Mass installation on multiple computers	p.8
Calculate the License you have used	p.8
Change the configuration of MyUSBOnly	p.9
Quick Started 1 (Add Trusted USB)	p.10-12
Quick Started 2 (Change Password)	p.12-12
Report & Management (Single version)	p.13
Report & Management (Cloud Version)	p.15
↳ Welcome to Cloud Report & Management	p.15
↳ Login Page	P.16
↳ Home Pages	p.16
↳ Add Computer (Install Client)	p.17
↳ Overview Page	p.17-18
↳ Quick Search Page	p.18-19
↳ Summary Page	p.19
↳ Device Log Page	p.19
↳ File Log Page	p.20
↳ Computers Page	p.21
↳ Devices Page	p.21
↳ Whitelist Page	p.22-23
↳ User Group Page	p.23
↳ Client Settings Page	p.25-27
Register	p.28
↳ Online Activation	P.28
↳ Manual Activation	P.29-31
Uninstall	p.32
FAQ	p.33
↳ Cannot enter private zone of usb drive or cannot format usb drive	p.33-35
↳ If I reformat my hard disk, is reactivation required?	p.35
↳ If a reinstallation of the software is needed, is reactivation required?	p.35-36
↳ Can MyUSBOnly work if we use Ghost / TrueImage	p.36
↳ I do not want to activate. What can I do to turn this off?	p.36
↳ not connected with internet (offline register)	p.36
↳ Is it possible to transfer a license to another computer?	p.36
About & Support	p.37-38
Contact Information	p.38



© MyUSBOnly, 2014

MyUSBOnly USB Port Security - Introduction

Lock the Bad Guys out of your USB ports!

Block Untrusted USB Memory Stick Activity in Office.

Whether you're an IT professional, a small business owner, or just someone who cares about sensitive data security, MyUSBOnly can help protect you against data theft.

MyUSBOnly will help you secure your PCs endpoints. You will be able to restrict the use of the USB ports and other endpoints on your desktop PC or notebook and effectively prevent unwanted data introduction or data leakage from your PC.

Secure Your Files: Stealing information - or just reading it without permission - is a lot easier than it used to be. All you have to do is stick a USB thumb drive into a port, copy some files, and put the drive back into your pocket.

Yes, a lot of us are pretty careful about encrypting our backups, and the info we send over the internet, but then leave a big hole in our security by not protecting our files from being copied to a drive that fits in a pocket and can easily hold all our private information.

MyUSBOnly lets you:

Prevent data theft by blocking all but your trusted USB storage devices. Stop your files from walking away on thumb drives, mp3 players, flash cards, smart phone devices and portable USB hard drives. Plus, it can secretly log all USB connect and disconnect activity and let you view from Centralized Report & Management Panel (Server Or Cloud Center)

- **Administer all your USB plugs in/out on internet anywhere and anytime**

Login our web-based platform and all the USB plugs of your devices are under your control.

- **Prevent data leaks (DLP) from smart phone devices**

Prevent data leakage risk from smart phones and other new devices, while allow only power charge.

- **Whitelist by devices**

It will check a whitelist of allowed devices by USB brand (if you want to allow a certain USB brand that is used by the company) or by serial number (for specific USB devices you want to allow).

- **Handy reports ready for you**

We design handy reports summarizing what users did through the plugged USB devices.



You can access them with your desktop or mobile devices!

- **Assign USB devices into groups**

With device groups feature you can easily specify a group of devices to a computer designated department.

- **Run it invisibly**

So you can catch, as well as deter, problem coworkers, visitors, family members, or managers.

- **Performing software updates instantly**

You can upgrade software to remote computers by using web cloud control panel.

- **Easy to install**

You don't have to bother server issue. Cloud takes care of it.

System Requirements

The following environment components are required for the correct installation and operation of the MyUSBOnly:

Operation System	<ul style="list-style-type: none">— Windows XP, Windows 2003, Windows Vista (32bits/64bits), Windows 2008 (32bits/64bits), Windows 7 (32bits/64bits), Windows 8 (32bits/64bits)
Hardware	<ul style="list-style-type: none">— Pentium Processor— 256 MB RAM— 40 MB HDD Space— USB Mass Storage Devices
Software	<ul style="list-style-type: none">— None



Important Notes

We suggested that you can disable the auto-run or auto-play features in Windows XP and Windows 2000 operating system if you are using a U3 USB smart drive. (U3 Launchpad emulates itself as a virtual CD drive in the Windows operating system and uses the built-in Auto run and AutoPlay features in Windows to start the U3 Launchpad automatically.)

- Is it possible to hide MyUSBOnly tray icon completely. If you choose to disable show up the icon in tray area you can press Ctrl-F5 to restore the main window.
- If you've got MyUSBOnly not from our web site, but from the other source (magazine CD or some software library), please visit our home page (www.MyUSBOnly.com) - you'll probably find the later version.

Buy & Install MYUSBOnly paid version

If you need to purchase the paid version of MyUSBOnly, then you need to complete the following steps:

- 1.First, open the site www.MyUSBOnly.com, and click on the page "BUY NOW" link, and then according to the prompts on the website to complete the order and payment (Input your e-mail address during order process).

MyUSBOnly Your security is our business
Lock the Bad Guys out of your USB ports

HOME TOUR **BUY NOW** DOWNLOAD SUPPORT PARTNERS PRESSROOM CONTACT

MyUSBOnly Pricing List www.MyUSBOnly.com

NOTE: All prices are in US Dollars, include a free 12-month subscription plan for technical support, software upgrades and cloud report and manage access. The renewal fee will be 50% of the list price of the software you purchased.

VISA MasterCard DISCOVER AMERICAN EXPRESS PayPal

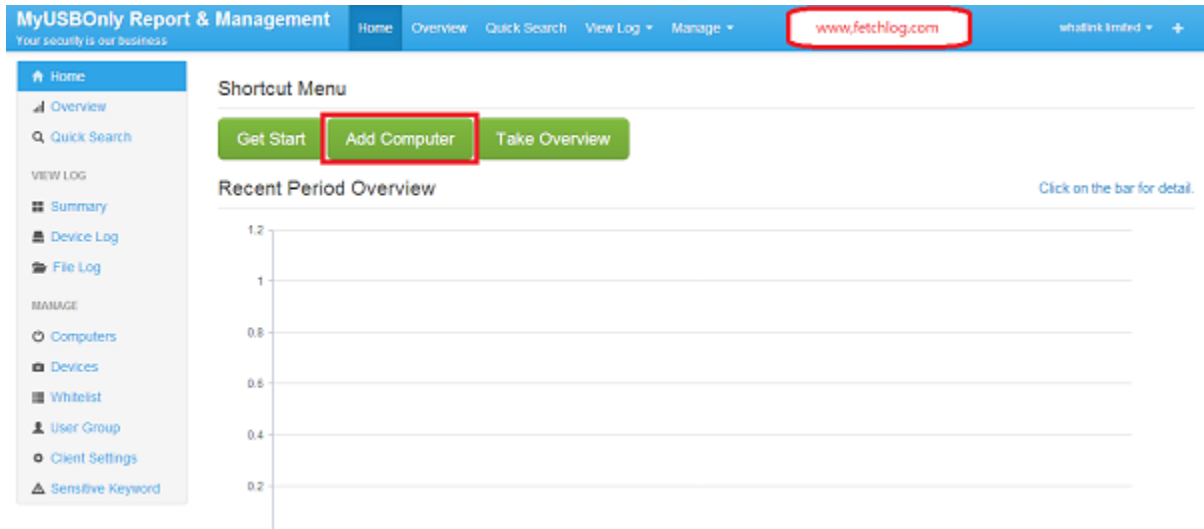
All Purchase Now Include Cloud Report Features. Special Offer Now! Limited Time Only.

License	Price, USD (\$)	Order
---------	-----------------	-------



© MyUSBOnly, 2014

2. When the payment is completed, you will receive your MyUSBOnly License information with account and password. Next, please open the site www.fetchlog.com, and use the email account and password to login to MyUSBOnly Report and Management Console, you can click on "Add Computer" to download the latest paid version of MyUSBOnly setup file in a ZIP format archive.



3. Double click on the ZIP file, and then run MyUSBOnly setup file. Make sure you execute the setup file as Administrator permission, simple flow the setup instruction to complete the MyUSBOnly installation.

4. When you have completed the installation, the MyUSBOnly will automatically run (MyUSBOnly will automatically run after computer boot) and always protect your USB port on your computer. If you need to change settings of MyUSBOnly, please login to MyUSBOnly Report and Management Console.

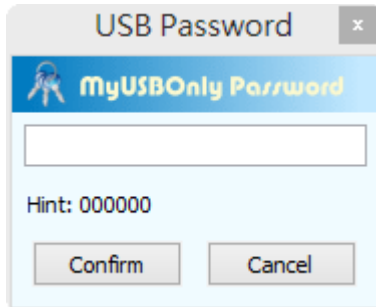
Upgrade to MyUSBOnly paid version

If your computer is currently installed MyUSBOnly trial version, and you want to upgrade to the paid version, you will need to purchase a MyUSBOnly paid version (see "How to buy a paid version MyUSBOnly"), after payment is made, you will receive e-mail with License information, you can use this License Key to upgrade to the paid version, the specific practices are as follows:

1. Click in the system tray MyUSBOnly icon, and select "General Setup" from pop-up menu.



2. In the password prompt box, enter the Admin & Uninstall Password (the default password is 000000).



3. The main interface will show after enter valid password, please select "Enter License" menu, and then in the text box, enter your MyUSBOnly License Key and click on "Validate License" button, if License is valid, the software will become a paid version (You may need to wait for few minute during converting trial version to paid version).



4. There is another way to convert from a trial version to the paid version, you can login to MyUSBOnly Report and Management Console (i.e. site www.fetchlog.com), go to the page "Add Computer" to download the latest MyUSBOnly paid version, just install this paid version.



Silent Unattended Installations

If you want to deploy MyUSBOnly as unattended installation, then please follow these steps:

1. In the browser, open <http://www.fetchlog.com/dload/setup.msi> and download MSI installation package.
2. Login to Report and Management Console <http://www.fetchlog.com> and click on the "Client Settings" page, at the bottom of page you can find your License Key.
3. Use the Windows command prompt program (i.e. cmd.exe, for Windows Vista and later operating systems, please Run the command prompt program as administrator) to run your MSI installation package, and add the parameter `UPLOADKEY=your License key`

The License Key can be found on the "Client Settings" page of Report and Management Console

Example command:

```
msiexec /qb /i setup.msi UPLOADKEY=your License Key
```

Mass installation on multiple computers

If you need to mass install on multiple computers with MyUSBOnly paid version, then you can log on the web site www.fetchlog.com then by clicking the "Add Computer" to download the latest version of MyUSBOnly. You can copy the zip package to other computers which you want to install MyUSBOnly, and then on each computer to unpack zip package and execute setup file to perform installation, you don't have to download the setup package again from www.fetchlog.com, the same setup file package can install to multiple computers.

Calculate the License you have used

If you purchase a 10 MyUSBOnly License, you can install MyUSBOnly on 10 machines. If one of the particular computer broken or reformat, then you can free-up the license as instruction below:

Login to Report and Management Console and delete the computer from the list, you can then free-up the license and re-install MyUSBOnly into your new machine.

If you want to transfer License from one machine to another, first, please uninstall the MyUSBOnly program, and Login to Report and Management Console and delete the computer from the list, you can then free-up the license and re-install MyUSBOnly into your new machine.



© MyUSBOnly, 2014

Change the configuration of MyUSBOnly

MyUSBOnly provides powerful web report and management capabilities, which can unified configuration and management of all installed MyUSBOnly computers, so you no longer need to be configured individually MyUSBOnly locally, if you need to change the configuration, please open and login to the site www.fetchlog.com, then go to "Client Settings" page to perform unified configuration and management, more information can refer to MyUSBOnly Report and Management User Guide.



Quick Started 1 (Add Trusted USB)

Add a trusted USB storage device :

To authorize a new device:

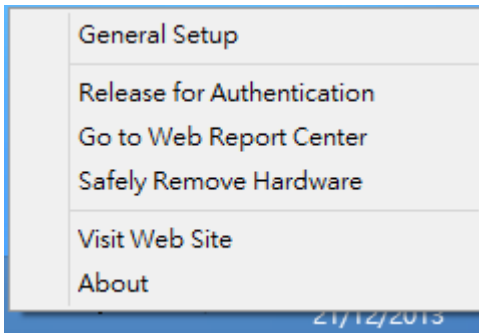
1. Plug-in your USB storage device, then wait a moment, MyUSBOnly will pop up a password prompt box, enter valid password before you can continue to use the USB storage device.



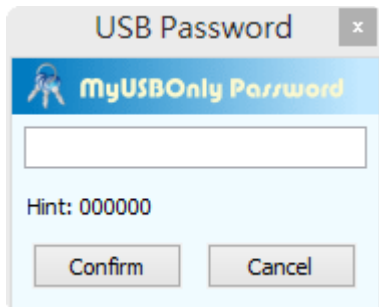
2. MyUSBOnly needs a password to access to an unknown USB device (The default password is **000000**)
See how to change a default password on Quick Started 2
3. After entering the password, please click on "Allow" button, if you enter a password for Admin & Uninstall Password, then MyUSBOnly will accept your USB storage device and added to the default group of white list, so next time you insert the same device, MyUSBOnly will no longer require you to enter a password. If you enter the Guest password, then MyUSBOnly will only allows you to use the device this time, when you unplug the device then re-inserted, MyUSBOnly will still require you to enter password again. About Admin & Uninstall passwords and Guest passwords more information, please refer to MyUSBOnly Report and Management User Guide.
4. Done!

Adding large quantity of trusted USB storage devices:

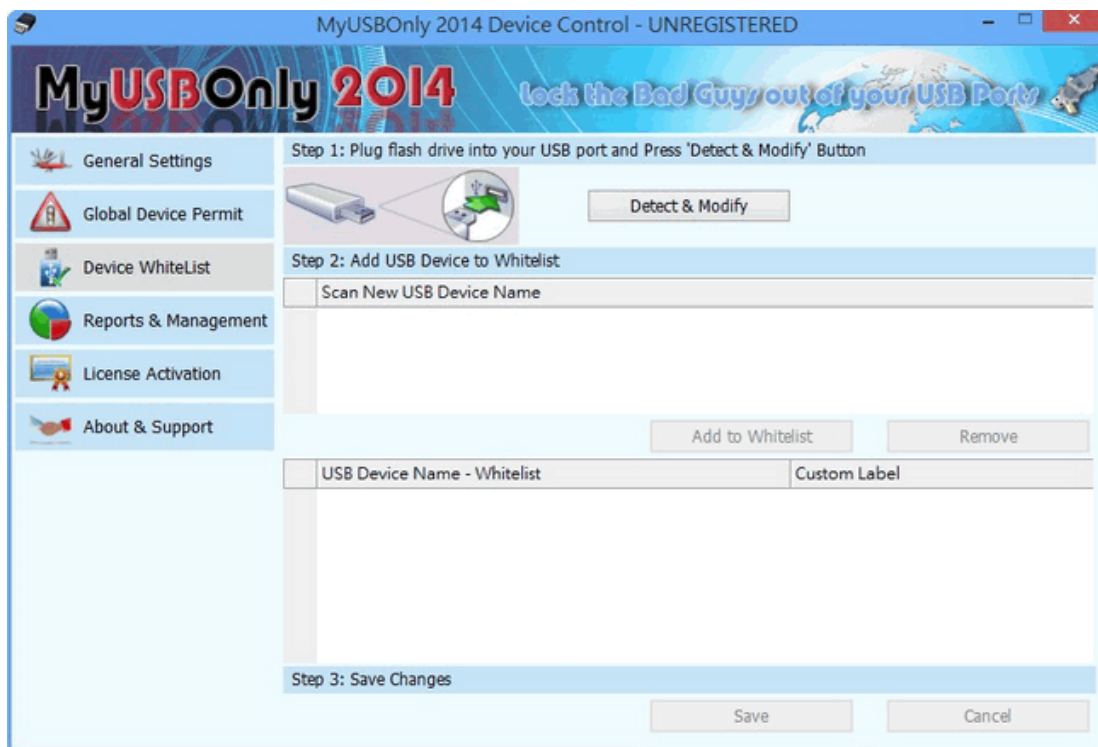
1. Get ready of your USB storage device you like to add to white list, and then click in the system tray MyUSBOnly icon and then select the menu "General Setup"



2. In the password prompt box, enter the Admin & Uninstall Password (the default password is 000000).



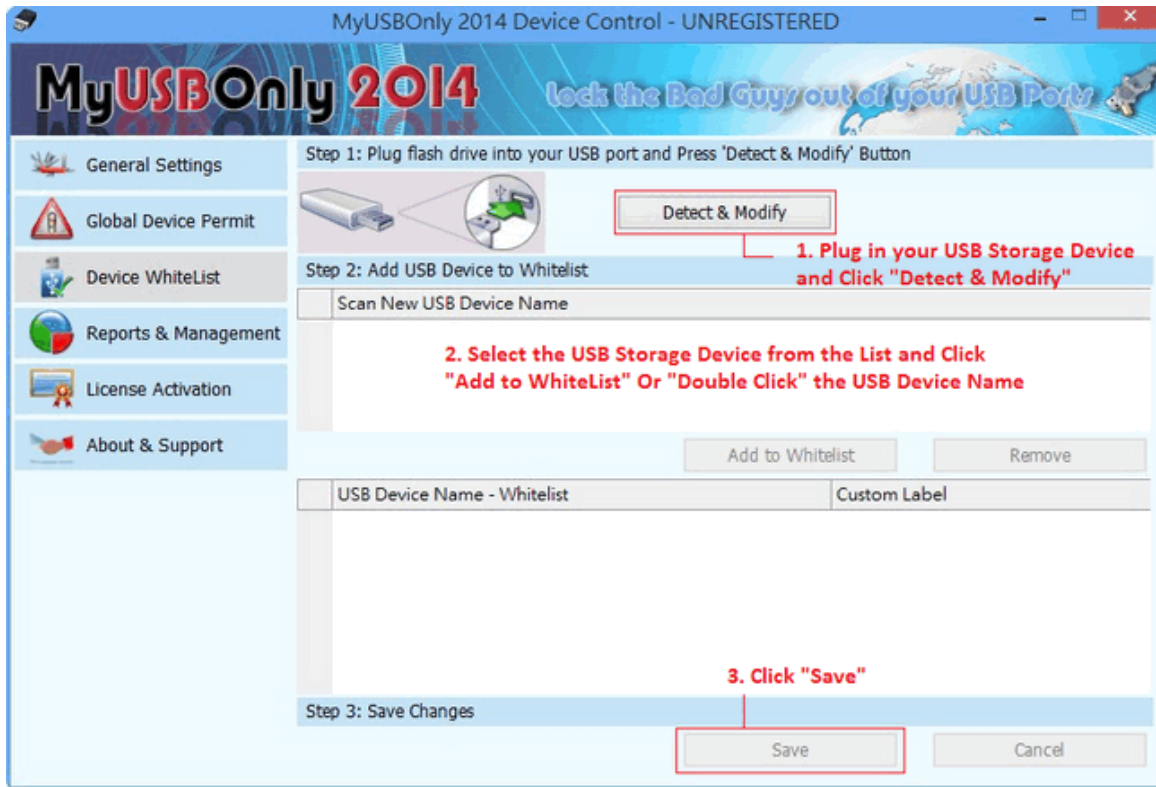
3. Enter the valid Admin & Uninstall password when prompt, the MyUSBOnly main interface will pop up, and then click "Device Whitelist" and then click "Detect & Modify" button



4. Now, Please insert your trusted USB storage device, the MyUSBOnly will detect to your device, then you can click the "Add to Whitelist" button, repeat this step to add your USB storage device.



5. Finally, click the "Save" button, for USB storage device is added to the white list, MyUSBOnly will no longer be required to enter a password to use.



6. If you have other USB devices want to add to MyUSBOnly white list, you can repeat step 4 above to perform this operation.

Quick Started 2 (Change Password)

Change Password of Setup Window

By default, MyUSBOnly requires a password to access the MyUSBOnly settings interface.

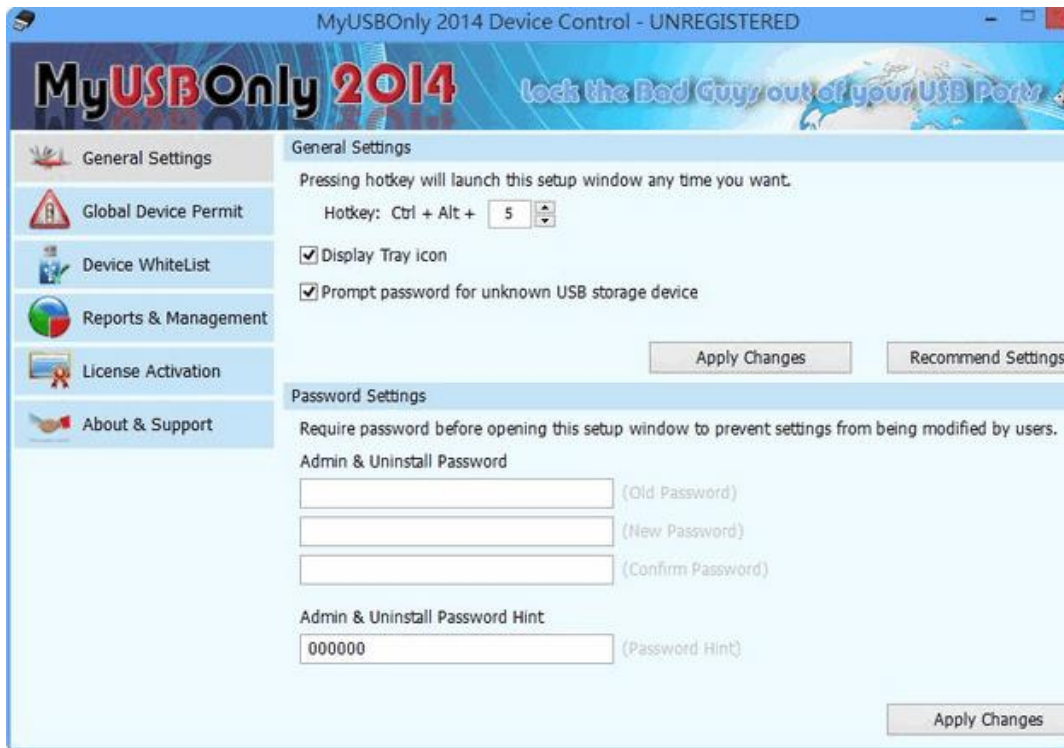
(The default password is **000000**)

To change password:

Click **General Setup** from Preference



© MyUSBOnly, 2014



1. Change Admin & Uninstall Password.
 2. Insert Old password in the first column , then Insert New Password & Confirm Password.
- *New Password & Confirm Password must match & over 5 digits.****
3. Click "Apply Changes" for the changes to take effect
 4. After setting up a password, you can minimize the application and MyUSBOnly will help you secure your PCs endpoints.

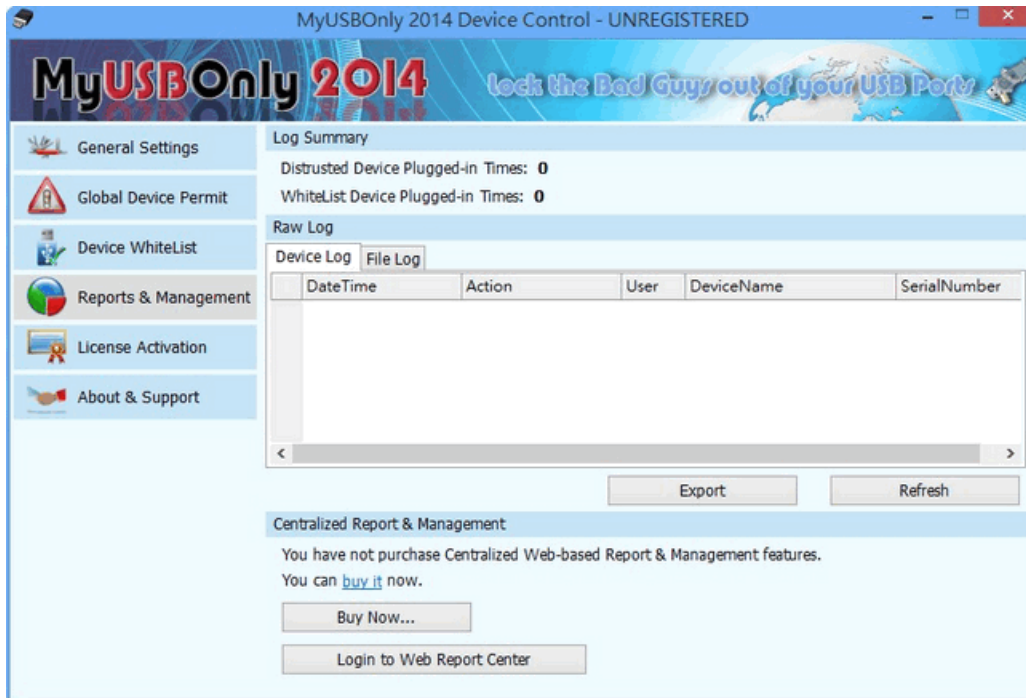


© MyUSBOnly, 2014

Report & Management (Single version)

With MyUSBOnly you can see when a device was connected and disconnected to the PC.

In order to see the Log data, Click **Report & Management** from Menu.



Log Summary :

MyUSBOnly will record "Distrusted USB Plugged-in Times" & "WhiteList Device Plugged-in Times", in order to count the Frequency of USB Port Usage.

- Device Log

MyUSbOnly records any storage device connecting/disconnecting to computer.

- File Log

MyUSBOnly records all the device activity, while the storage device connected to the computer.



- Export

MyUSBOnly allow user to export the device log and file log.

- Refresh

Immediately refresh for updating the log data.

Report & Management (Cloud Version)

Welcome to Cloud Report & Management

New Features for Cloud Centralized Report & Management

- Cloud-based reports, allowing you to monitor the enterprise's USB behavior anywhere, anytime.
- Allows you to block the smart phones and other smart devices to prevent the data leakage risks, and you can still legally power charge phone if you want to.
- Centralized configuration all clients via MyUSBOnly Report & Management Console.
- Whitelist USB settings can be grouped and easier assigned to a computer.
- Client software update feature makes it easier to maintain and deploy.
- Supports all types of desktop and mobile browsers.

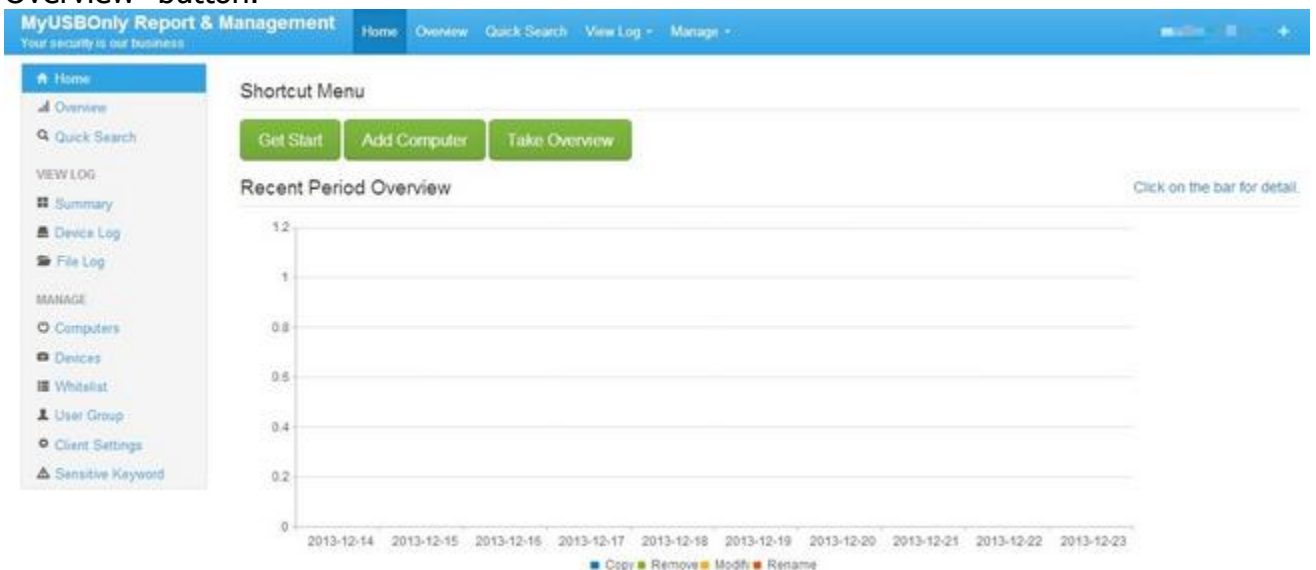


Login Page

Use web browser to open <http://www.fetchlog.com> page, enter the correct user name and password and click Login button to log in to MyUSBOnly Report & Management Console.

Home Pages

You will jump to Home page after the success login, you can click on the "Get Start" button to simply learn how to use MyUSBOnly Report & Management Console, or by clicking on the "Add Computer" to install MyUSBOnly client agent to a new computer. You can start view statistical reports by clicking on "Take Overview" button.





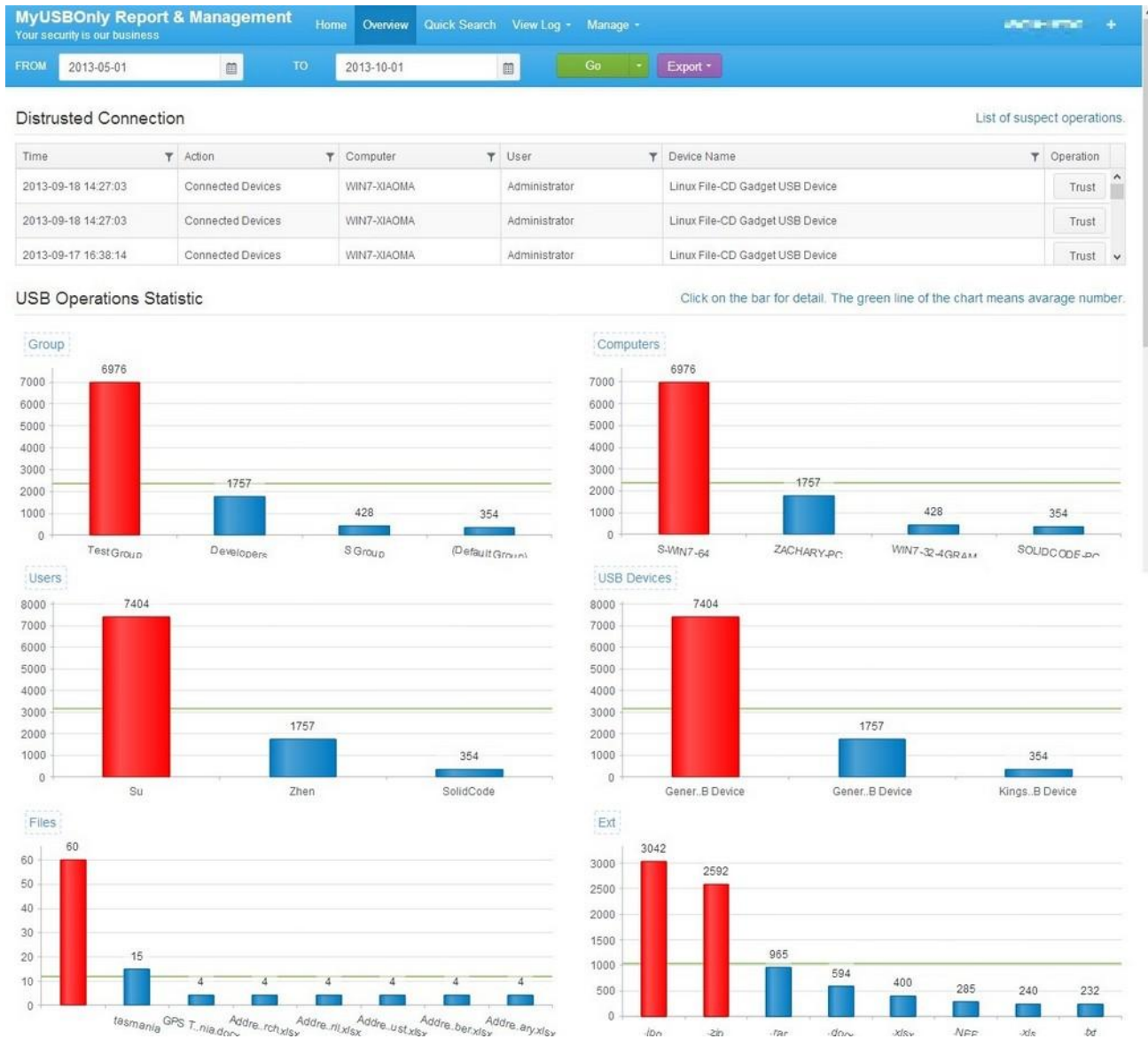
Add Computer (Install Client)

On the Home page, click on "Add Computer" button and you will forward to the "Add Computer" page, on this page, you can click "Click here to Download for Windows" to download the latest version of MyUSBOnly (if your browser prompts the alert before download, do not panic, you can choose to allow downloads, we can ensure that you have downloaded content is 100% safe), when the download is complete, extract the installation package, and then double-click setup.exe to start the installation MyUSBOnly, and then you can simply follow the prompts to complete the installation. When the installation is complete, wait a few minutes and we can see this computer is added to "Computers" list, see "Computers Page" below for more information.



Overview Page

By clicking on the menu bar "Overview" button you can view the variety of USB usage statistics. You can easily choose to view the pre-defined period such as Today, last week or current month report data. To exporting data to Excel for printing or backup is easy, just select "Export" and you have done.



Quick Search Page

By clicking on the menu bar "Quick Search" button you can use a keyword search box to search any data you are interesting, such as your company product name, marketing campaign.. etc. To exporting search data to Excel for printing or backup is easy, just select "Export" and you have done.



Summary Page

MyUSBOnly Report & Management

Your security is our business

[Home](#)
[Overview](#)
[Quick Search](#)
[View Log](#)
[Management](#)

DATE RANGE

FROM

2013-05-01

TO

2013-10-01

Go

COMPUTER LIST

CTS-XP (192.168.0.123)

ENGXPS3 (10.0.2.15)

S-WIN7-64 (192.168.0.20)

SOLIDCODE-PC (10.0.0.45)

WIN7-32-4GRAM (192.168.0.26)

WIN7- I:\W1 % (192.168.0.19)

WIN7-VII (192.168.0.34)

WIN7-X-QH% (192.168.0.18)

ZAC I\U-PC (192.168.0.50)

Device (connections count)

Device (files count)

File

Action



© MyUSBOnly, 2014

Device Log Page

By clicking on the menu bar "Device Log" button you can clearly see that which USB device is access at a specific period of time and by which employee.

MyUSBOnly Report & Management Home Overview Quick Search View Log Manage

Your security is our business

DATE RANGE
FROM: 2013-05-01
TO: 2013-10-01
Go

COMPUTER LIST
CTS-XP (192.168.0.123)
ENGXPS3 (10.0.2.15)
S-WIN7-64 (192.168.0.20)
SOLIDCODE-PC (10.0.0.45)
WIN7-32-4GRAM (192.168.0.26)
WIN7-LJUVBY (192.168.0.19)
WIN7-VM (192.168.0.34)
WIN7-XCOM1 (192.168.0.18)
ZAL-4941-PC (192.168.0.50)

Trust	Time	User	Action	Device Label	Device Model	Serial Number
Trust	2013-08-12 11:11:43	SolidCode	Connected Devices	Kingston DT 101 G2 USB De...	Kingston DT 101 G2 USB Device	001CC0EC34F1BB20E7170...
Trust	2013-08-13 18:33:10	SolidCode	Disconnected Devices	Kingston DT 101 G2 USB De...	Kingston DT 101 G2 USB Device	001CC0EC34F1BB20E7170...
Trust	2013-08-15 12:07:55	SolidCode	Connected Devices	Kingston DT 101 G2 USB De...	Kingston DT 101 G2 USB Device	001CC0EC34F1BB20E7170...
Trust	2013-08-15 12:09:55	SolidCode	Disconnected Devices	Kingston DT 101 G2 USB De...	Kingston DT 101 G2 USB Device	001CC0EC34F1BB20E7170...
Trust	2013-08-15 14:40:41	SolidCode	Connected Devices	Kingston DT 101 G2 USB De...	Kingston DT 101 G2 USB Device	001CC0EC34F1BB20E7170...
Trust	2013-08-15 14:41:53	SolidCode	Disconnected Devices	Kingston DT 101 G2 USB De...	Kingston DT 101 G2 USB Device	001CC0EC34F1BB20E7170...
Trust	2013-08-15 14:45:01	SolidCode	Connected Devices	Kingston DT 101 G2 USB De...	Kingston DT 101 G2 USB Device	001CC0EC34F1BB20E7170...

Page 1 of 1 19 Items per page 1 - 7 of 7 items

File Log Page

By clicking on the menu bar "File Log" button you can clearly see that which File is copied or deleted at a specific period of time and who is intended to Copy data or Delete information.

MyUSBOnly Report & Management Home Overview Quick Search View Log Manage

Your security is our business

DATE RANGE
FROM: 2013-05-01
TO: 2013-10-01
Go

COMPUTER LIST
CTS-XP (192.168.0.123)
ENGXPS3 (10.0.2.15)
S-WIN7-64 (192.168.0.20)
SOLIDCODE-PC (10.0.0.45)
WIN7-32-4GRAM (192.168.0.26)
WIN7-LJUVBY (192.168.0.19)
WIN7-VM (192.168.0.34)
WIN7-XCOM1 (192.168.0.18)
ZAL-4941-PC (192.168.0.50)

Time	User	Action	File Name	Old Name	New Name	Device Model	Serial Number
2013-08-12 11:24:02	SolidCode	Removed	H:\tasmania\27 Oct_Colonial Launceston.pdf			Kingston DT 101 G2 USB Device	001CC...
2013-08-12 11:24:02	SolidCode	Removed	H:\tasmania\30 Oct_Alice_Launceston.pdf			Kingston DT 101 G2 USB Device	001CC...
2013-08-12 11:24:02	SolidCode	Removed	H:\tasmania\31 Oct_Tidelines of Bicheno - Bichen...			Kingston DT 101 G2 USB Device	001CC...
2013-08-12 11:24:02	SolidCode	Removed	H:\tasmania\31 Oct_Tidelines of Bicheno - Bichen...			Kingston DT 101 G2 USB Device	001CC...
2013-08-12 11:24:02	SolidCode	Removed	H:\tasmania\car_australia.jpg			Kingston DT 101 G2 USB Device	001CC...
2013-08-12 11:24:02	SolidCode	Removed	H:\tasmania\confirm.jpg			Kingston DT 101 G2 USB Device	001CC...
2013-08-12 11:24:02	SolidCode	Removed	H:\tasmania\GPS Tasmania Bak.docx			Kingston DT 101 G2 USB Device	001CC...
2013-08-12 11:24:02	SolidCode	Removed	H:\tasmania\GPS Tasmania.docx			Kingston DT 101 G2 USB Device	001CC...
2013-08-12 11:24:02	SolidCode	Removed	H:\tasmania\Hotel Tasmania.docx			Kingston DT 101 G2 USB Device	001CC...
2013-08-12 11:24:02	SolidCode	Removed	H:\tasmania\hotel Thank you for your booking at C...			Kingston DT 101 G2 USB Device	001CC...
2013-08-12 11:24:02	SolidCode	Removed	H:\tasmania\hotel Thank you for your booking at C...			Kingston DT 101 G2 USB Device	001CC...
2013-08-12 11:24:02	SolidCode	Removed	H:\tasmania\hotel_curringa farm.jpg			Kingston DT 101 G2 USB Device	001CC...
2013-08-12 11:24:02	SolidCode	Removed	H:\tasmania\Tasmania_11aug.docx			Kingston DT 101 G2 USB Device	001CC...
2013-08-12 11:24:02	SolidCode	Removed	H:\tasmania\Tasmania_bak.docx			Kingston DT 101 G2 USB Device	001CC...
2013-08-12 11:24:02	SolidCode	Removed	H:\tasmania\Thank you for your booking at Cradle ...			Kingston DT 101 G2 USB Device	001CC...
2013-08-12 11:24:02	SolidCode	Removed	H:\tasmania\Thank you for your booking at Cradle ...			Kingston DT 101 G2 USB Device	001CC...
2013-08-12 11:24:02	SolidCode	Removed	H:\tasmania\Tidelines of Bicheno - Bicheno - Tas...			Kingston DT 101 G2 USB Device	001CC...
2013-08-12 11:24:02	SolidCode	Removed	H:\tasmania\time.jpg			Kingston DT 101 G2 USB Device	001CC...
2013-08-12 11:24:02	SolidCode	Removed	H:\tasmania\Visitors_Guide_to_National_Parks_...			Kingston DT 101 G2 USB Device	001CC...

Page 1 of 19 19 Items per page 1 - 19 of 354 items



Computers Page

By clicking on the menu bar "Computers" button you can view the list of computer which has installed MyUSBOnly client, you can see the computer detailed configuration information by clicking the "Details" button. To change the computer to a different group, just clicking "Edit" button to assign a group, then this computer will load a different whitelist group. See "Whitelist Page" below for details.

MyUSBOnly client update feature, which eliminates the trouble of updating the client version, you simply click the "Upgrade Version" button on one computer, the computer will automatically update to the latest version of MyUSBOnly (This may take up to 90 minutes during update).

If you no longer need a computer to use MyUSBOnly (for example, you have uninstall the software on the computer or the computer has break down), you can click "Delete" button to delete specific computer. Note that this computer's uploaded data will be deleted, so be careful when using delete computer feature.

MyUSBOnly Report & Management
Your security is our business

Home Overview Quick Search View Log Manage

Home

Overview

Quick Search

VIEW LOG

Summary

Device Log

File Log

MANAGE

Computers

Devices

Whitelist

User Group

Client Settings

Sensitive Keyword

Computers

When a computer be deleted from the table, the data uploaded from the computer will be deleted.

Status	UpdConfig	PC Name	IP	Version	Group	Active	Last Login Time	Operation
		CTS-XP	192.168.0.100	9.0.35	Developers	true	2013-08-09 11:04:...	Edit Delete Upgrade Version
		ENGXPSP3	10.0.2.15	9.0.36	(Default Group)	true	2013-08-31 10:00:...	Edit Delete Upgrade Version
		S-WIN7-64	192.168.0.20	9.1.0	Test Group	true	2013-11-21 16:46:...	Edit Delete Upgrade Version
		SOLIDCODE-PC	10.0.0.45	9.0.36	(Default Group)	true	2013-08-19 13:11:...	Edit Delete Upgrade Version
		WIN7-32-4GRAM	192.168.0.26	9.0.36	S Group	true	2013-10-22 16:47:...	Edit Delete Upgrade Version
		WIN7-LIWI/EN	192.168.0.19	9.1.0	CTS	true	2013-12-23 11:37:...	Edit Delete Upgrade Version
		WIN7-VM	192.168.0.34	9.1.0	Test Group	true	2013-12-20 12:14:...	Edit Delete Upgrade Version
		WIN7-X-1000	192.168.0.18	9.1.0	CTS	true	2013-12-23 11:38:...	Edit Delete Upgrade Version
		ZACHARY-PC	192.168.0.50	9.0.36	Developers	true	2013-10-09 09:42:...	Edit Delete Upgrade Version

1 - 9 of 9 items

Warning

The data uploaded from the computer will be deleted. When this computer be deleted from the table

Add Computer

Export Excel

Update all client to latest version

Tips

Latest Version: 9.1.0

The computer will be added to here automatically, when you setup the client software in computer.

If you want to disable a computer's MyUSBOnly, you should set the 'Active' be false.

[Operation Log](#)



Devices Page

By clicking on the menu bar "Devices" button you can view the list of all USB devices. You can change the device label for easier recognize through click the "Edit" button to set an alias. You can clicking "Delete" button to delete the specified USB device and all its whitelist settings. Note that you should not delete device if you still want to control this device, use manage whitelist instead. See "Whitelist Page" for details.

MyUSBOnly Report & Management Home Overview Quick Search View Log Manage

Your security is our business

Home Overview Quick Search

VIEW LOG

- Summary
- Device Log
- File Log

MANAGE

- Computers
- Devices**
- Whitelist
- User Group
- Client Settings
- Sensitive Keyword

Devices

This is the list of the trusted USB devices.

Device Model	Device Label	Group	No SN Compare	Bypass Prompt	Operations
General USB Flash Disk USB Device (AA330463...	-ZAC白色U盘	S Group	true	true	Edit Delete Uploader
Generic Autorun Disk USB CDDVD (C2E0E64D_0)	Generic Autorun Disk...		false	true	Edit Delete Uploader
Generic Flash Disk USB Device (3EADE2F9_0)	Generic Flash Disk U...	Developers	false	false	Edit Delete Uploader
Generic Flash Disk USB Device (C2E0E64D_1)	Generic Flash Disk U...	Developers	false	false	Edit Delete Uploader
Kingston DT 101 G2 USB Device (001CC0EC34...	Kingston DT 101 G2 ...		false	false	Edit Delete Uploader
Kingston DTLocker+ USB CDDVD (0018F30C6A...	Kingston DTLocker+ ...	Developers	false	false	Edit Delete Uploader
Kingston DTLocker+ USB Device (0018F30C6A...	Kingston DTLocker+ ...	Developers	false	false	Edit Delete Uploader
TEAC DV-W28S-V USB CDDVD (FEAC0000DF0...	TEAC DV-W28S-V US...	Developers	false	false	Edit Delete Uploader
USB Flash Disk USB Device (ED82881D_0)	USB Flash Disk USB Device		false	false	Edit Delete Uploader
USB2.0 CARD-READER USB Device (81204200...	USB2.0 CARD-READ...	Test Group	false	false	Edit Delete Uploader

Whitelist Page

The powerful whitelist grouping feature allows you to create various departments or group in your company and assign some of the USB devices are belongs to certain groups.

For example, you can assign USB01 & USB02 in "Marketing Department" group and USB03 in "Q.C. Department" group, to change the computer to a different group, just clicking "Edit" button on "Computer Page" to assign a group. This can ensure a greater degree of data security within the enterprise, eliminate internal staff leaked.

Whitelist management is very simple, select a group you want to manage and then tick or un-tick the USB device as you like, finally, click "Save" to apply setting and you have done.



MyUSBOnly Report & Management Home Overview Quick Search View Log Manage

Your security is our business

VIEW LOG: Summary, Device Log, File Log

MANAGE: Computers, Devices, **Whitelist**, User Group, Client Settings, Sensitive Keyword

Whitelist

This is the list of the trusted USB devices.

Group: (Default Group) Save

Device Label	Device Model
<input checked="" type="checkbox"/> Test Disk (Mzone)	USB Flash Disk USB Device (ED82881D_0)
<input checked="" type="checkbox"/> -ZAC白色U盘	General USB Flash Disk USB Device (AA33046300045370_0)
<input type="checkbox"/> Generic Autorun Disk USB CDDVD (C2E0E64D_0)	Generic Autorun Disk USB CDDVD (C2E0E64D_0)
<input type="checkbox"/> Generic Flash Disk USB Device (3EAD2F9_0)	Generic Flash Disk USB Device (3EAD2F9_0)
<input type="checkbox"/> Generic Flash Disk USB Device (C2E0E64D_1)	Generic Flash Disk USB Device (C2E0E64D_1)
<input checked="" type="checkbox"/> Kingston DT 101 G2 USB Device (001CC0EC34F1BB20E717011B_0)	Kingston DT 101 G2 USB Device (001CC0EC34F1BB20E717011B_0)
<input type="checkbox"/> Kingston DTLocker+ USB CDDVD (0018F30C6AD5B9B1B1150039_1)	Kingston DTLocker+ USB CDDVD (0018F30C6AD5B9B1B1150039_1)
<input type="checkbox"/> Kingston DTLocker+ USB Device (0018F30C6AD5B9B1B1150039_0)	Kingston DTLocker+ USB Device (0018F30C6AD5B9B1B1150039_0)
<input type="checkbox"/> TEAC DV-W28S-V USB CDDVD (FEAC0000DF000_0)	TEAC DV-W28S-V USB CDDVD (FEAC0000DF000_0)
<input type="checkbox"/> USB2.0 CARD-READER USB Device (8120420080429000_0)	USB2.0 CARD-READER USB Device (8120420080429000_0)

User Group Page

By clicking on the menu bar "User Group" button you can create group according to your company departments or roles structure, for example, you can create the marketing group, the design group, senior manager group... etc.

MyUSBOnly Report & Management Home Overview Quick Search View Log Manage

Your security is our business

VIEW LOG: Summary, Device Log, File Log

MANAGE: Computers, Devices, Whitelist, **User Group**, Client Settings, Sensitive Keyword

User Group

+ Add new group

Group Name	Operations
Developers	Edit Delete
Test Group	Edit Delete
S Group	Edit Delete
CTS	Edit Delete



Client Settings Page

1).Client Settings:

- a. Prompt for unknown USB storage device:
When a user inserts an unknown USB storage device, this option is used to control whether the pop-up window will prompt the user and require authorization password.
- b. Display tray icon:
This option is used to control whether the MyUSBOnly icon is displayed in the system tray (lower right corner of the desktop).
- c. Hide general setup option in tray menu:
This option is used to control whether the "General Setting" menu is displayed in the MyUSBOnly system tray.

Client Settings Reset to Defaults

- ☒ Prompt for unknown USB storage device
- ☒ Display tray icon
- ☐ Hide general setup option in tray menu
- ☒ Always Remember my answer for any unknown USB storage device
- ☐ Never Remember my answer for any unknown USB storage device
- ☒ Create a local access log

2).Global Device Permit:

- a. Enable All Devices:
This option is used to control whether to enable all devices, if this option is checked, then all devices includes USB devices, iPhone, Android, USB Wifi, USB Bluetooth devices will no longer block.
- b. Disable smart devices (iPhone/Android/Windows Phone/Camera Devices):
This option is used to control whether you want to disabled iPhone, Android, Windows Phone, Camera Devices or similar portable devices.
- c. Prohibit smart devices USB Charging:
This option is used to control whether you want to disable smart portable device power charge.
- d. Disable apple iTunes software
This Option is use to control whether you want to disable device connect to iTune software.



e. Disable USB WiFi devices:

This option is used to control whether you want to disable USB WiFi devices. Users can by-pass your corporate firewall by using a USB WiFi adapter to connect to Internet. We recommend you to disable USB WiFi devices.

f. Disable USB bluetooth devices:

This option is used to control whether you want to disable USB bluetooth devices.

Global Device Permit Reset to Defaults

☐ Enable All Devices

☒ Disable smart devices (iPhone/Android/Windows Phone/Camera Devices)

☒ Prohibit smart devices USB Charging

☒ Disable apple iTunes software

☒ Disable USB WiFi devices

☒ Disable USB bluetooth devices

Save

3).Client Password Settings

a. Client Admin & Uninstall Password:

You can set the Admin & Uninstall password here (this password is very important, please do not disclose). This password is use to authorize an unknown USB storage device (you will get prompted to enter the password when inserting an unknown USB storage device) or entering "General Setup".

If you want to uninstall the MyUSBOnly client, you must also enter the Admin & Uninstall Password to perform the uninstall process.

b. Client Admin & Uninstall Password Hint:

You can set the password hint.

c. Temporary Password:

This password is use to temporary authorize an unknown USB storage device, which does not add into the whitelist when you authorize it. It will still

prompt to enter the password again when you unplug the device then re-inserted USB devices.

d. Enable temporary password checking in unknown USB device dialog prompt:

Tick this option to enable the Temporary password, or user can only enter the Admin & Uninstall password to authorize an USB storage device.



e. New Device Approvals Password:

In case if your user want to request to use an unauthorized USB storage device and you do not want to release the Admin & Uninstall or Temporary password to use, then this Approvals passwords can help you. You can release this Approvals password to user, when user enter this password during a prompt, you will get notify in MyUSBOnly Report & Management Console. If you decide to approved the new USB device, just login to MyUSBOnly Report & Management Console and approved the device. This lets you able to remote approve a new USB device without leaving your seat.

f. New Device Approvals Password Hint:

You can set the password hint.

Client Password Settings

Client Admin & Uninstall Password

Client Admin & Uninstall Password Hint

1234(5)

Temp. Password

☒ Enable temp password checking in unknown USB device dialog prompt

4).Time-Limited Access Code

You can set a time limited password for temporary use:

- Tick box : enable or disable the activity of the password.
- Insert a password and tick the box in front of the sentence, then saved.
- Click the Change button and insert a new password, then saved.
- Time limited available for individual computer.
- Times selection option (1,2,3,6,12 & never)
- Save for password enable. (to enable the time function enable/change successful, you must click "save")



Time-Limited Access Code

a.	b.	c.	d.	e.	f.
#1: <input type="text" value="*****"/>	<input type="button" value="Change"/>	<input type="text" value="ENGXPSP3"/>	<input type="button" value="v"/>	<input type="text" value="12 hours"/>	<input type="button" value="Save"/>
#2: <input type="text" value="*****"/>	<input type="button" value="Change"/>	<input type="text" value=""/>	<input type="button" value="v"/>	<input type="text" value="Never expired"/>	<input type="button" value="Save"/>
#3: <input type="text" value="*****"/>	<input type="button" value="Change"/>	<input type="text" value=""/>	<input type="button" value="v"/>	<input type="text" value="Never expired"/>	<input type="button" value="Save"/>
#4: <input type="text" value="*****"/>	<input type="button" value="Change"/>	<input type="text" value=""/>	<input type="button" value="v"/>	<input type="text" value="Never expired"/>	<input type="button" value="Save"/>
#5: <input type="text" value="*****"/>	<input type="button" value="Change"/>	<input type="text" value=""/>	<input type="button" value="v"/>	<input type="text" value="Never expired"/>	<input type="button" value="Save"/>

Distrusted Connection Alert

a. Email notification when distrusted device inserted:

You can use this option to configure whether to send e-mail notifications to you when there is an unknown device is plugged into your computer.

Distrusted Connection Alert

☒ Email notification when distrusted device inserted

Email Address

Account Info

license information :

a. Cloud Centralized Report & Management registration expired date (Life-time license for MyUSBOnly software "Individual License").

b. installation count limitation for single computer)

c. License serial number (please save in the safe place).

d. Language for cloud web report & Management menu.

Account Info

Expiry Date : 2014-01-01 (GMT) a.

Computer Limit : 50 b.

Serial Number : c.

Web Language : d.



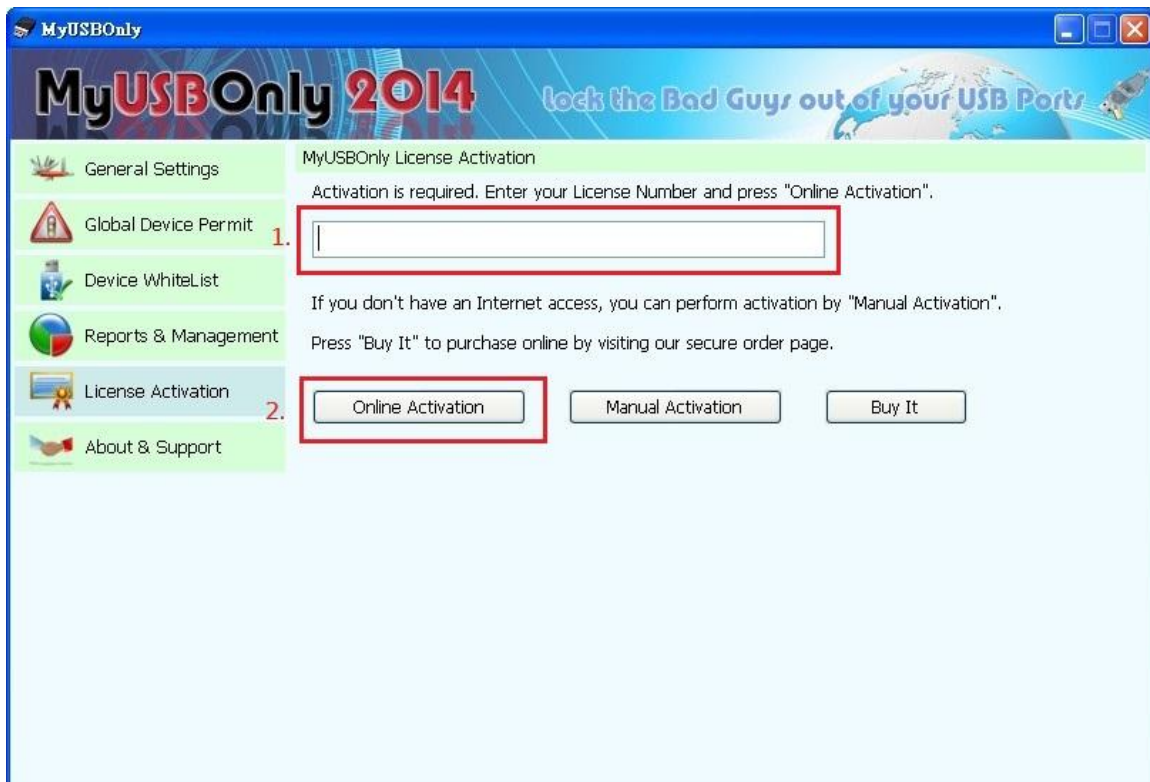
Register

After your 27 day trial version of MyUSBOnly has expired you are required to purchase a license key for the software over the internet. To purchase a license key you can visit our website and click order.

Web: www.MyUSBOnly.com

Online Activation :

1. Copy the License number into the Activation field.
2. Click "Online Activation" to Complete the Registration.

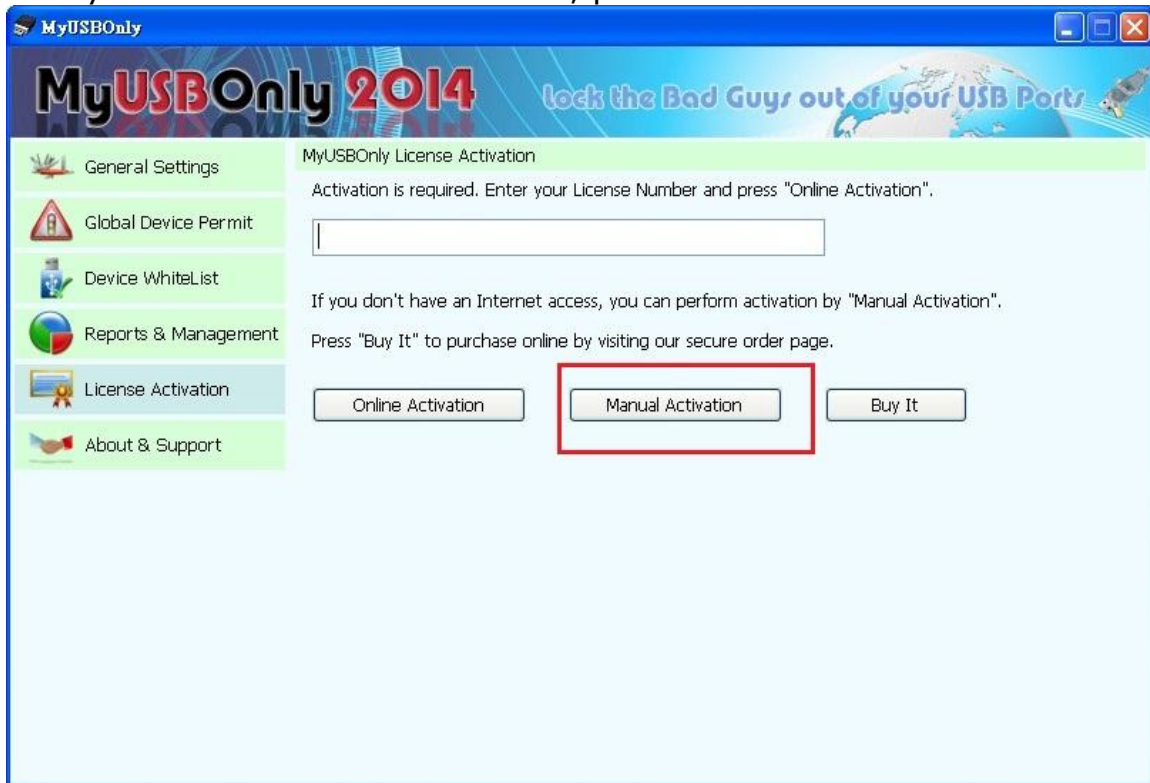


Please save your license key in a safe place for future reference.



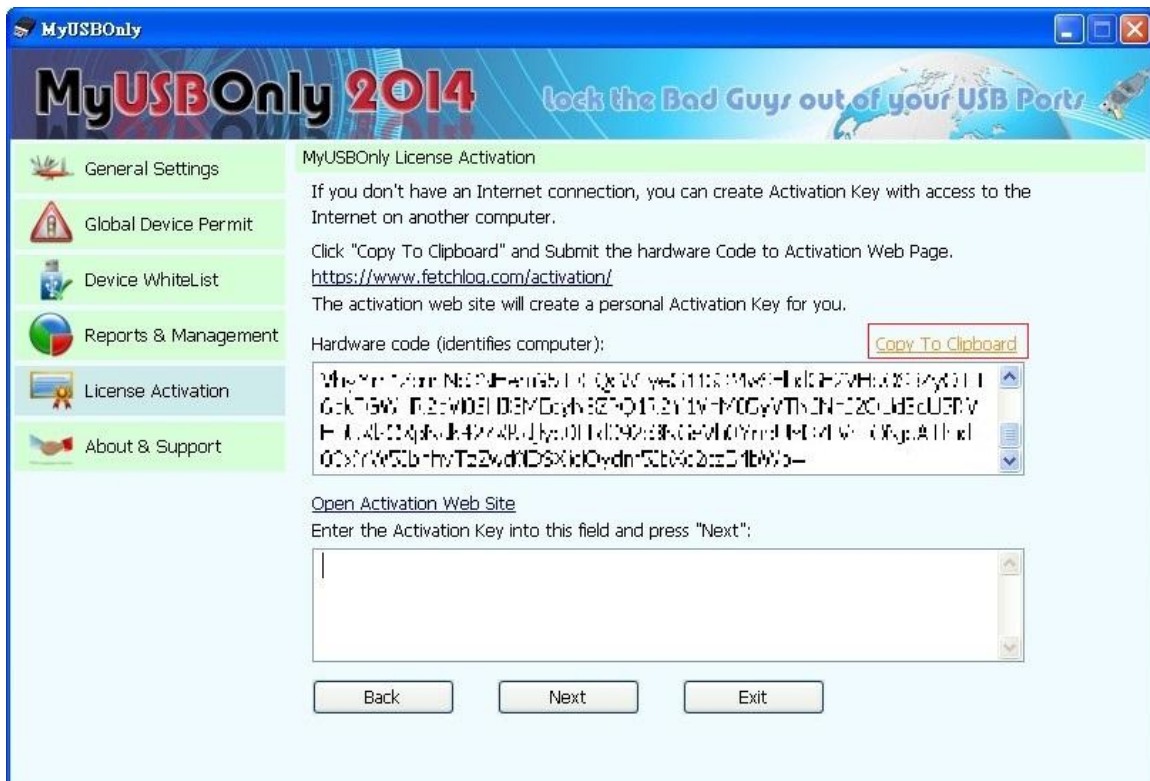
Manual Activation :

1. If you dont have internet access, please Click "Manual Activation".

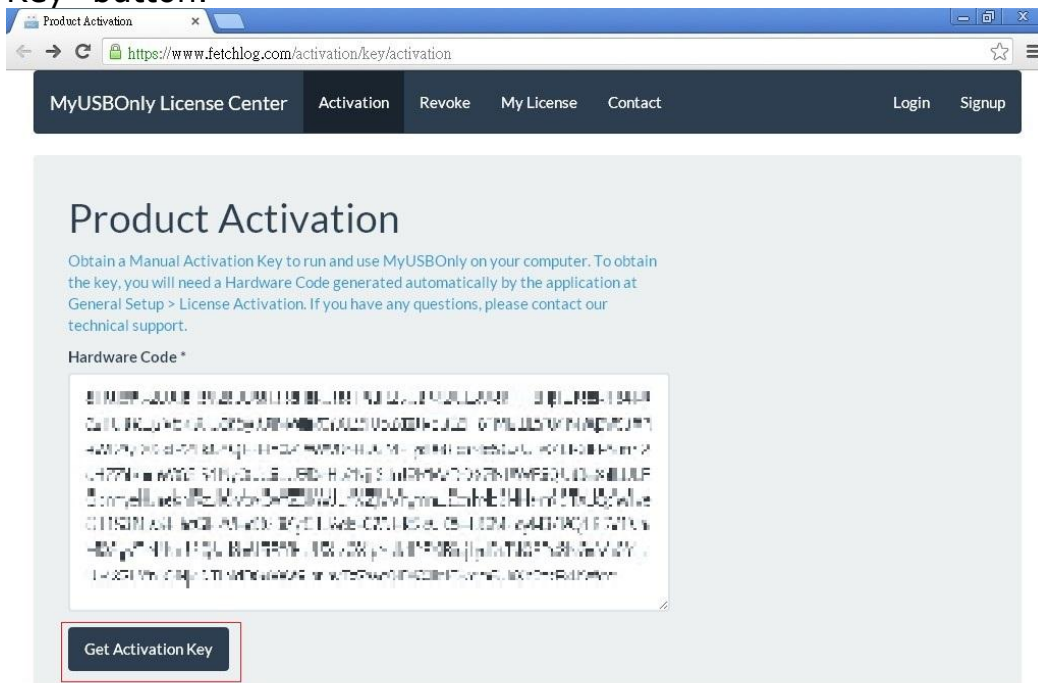


2. After the first step, you can find the Manual Activation pages with filled Hardware code, simply Click "Copy to Clipboard".

3. **Find another computer with Internet Access**, and visit "<https://www.fetchlog.com/activation/>".



4. please fill in the hardware code into field and Click "Get Activation Key" button.





© MyUSBOnly, 2014

5. After the process, You can find an Activation Key, please copy and Return to the MyUSBOnly Program menu.

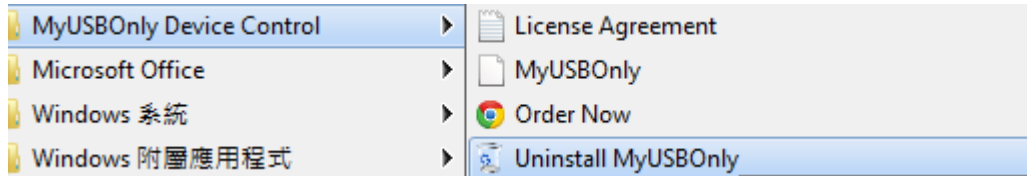
6. Fill in the Activation Key fields and Click "Next" to Complete the Manual Activation.



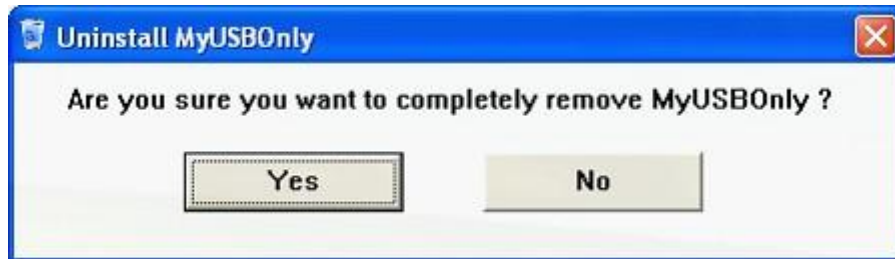
Uninstall

You can follow these steps to uninstall MyUSBOnly:

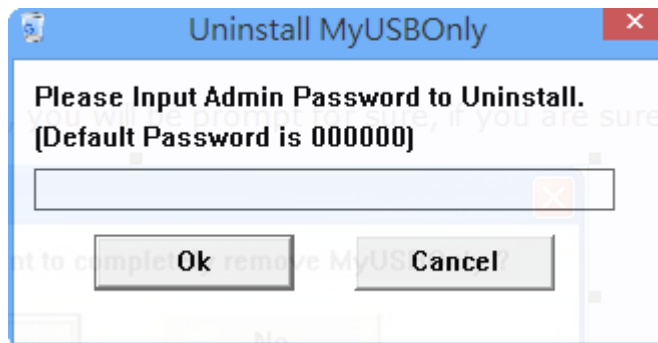
1. In the Start menu, locate for programs "MyUSBOnly by IceDeep" menu, then click on the "Uninstall MyUSBOnly" to perform the uninstall process.



2. During uninstall process, you will be prompt for sure, if you are sure you want to uninstall then please click the "Yes" button.



3. Uninstall MyUSBOnly requires you to enter Admin & Uninstall password (default password is 000000), enter the valid password and click the "OK" button, and then flow the interface to perform uninstall process.





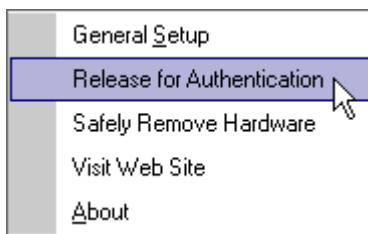
FAQ

Cannot enter private zone of usb drive or cannot format usb drive

Release for Authentication

For unique USB devices with secure/encryption features, this feature releases MyUSBOnly control for authentication/password entry.

You can right-click on "myusbonly" tray icon and choose "Release for Authentication" and authentication your USB device.



U3 Smart Drives

For example, you should perform "Release for Authentication" before issues eject of U3 device.



Transcend JetFlash Biometric (Finger Print) USB Drives

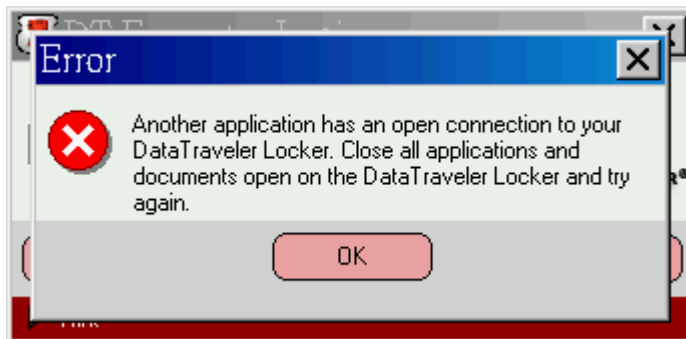
For example, you should perform "Release for Authentication" before issues exit command for this device.

Kingston DataTraveler DTSP/Locker

For example, you should perform "Release for Authentication" before issues Login/Logout command for this device.



The error message shows if you forget to perform "Release for Authentication" on Login/Logout.



If I reformat my hard disk, is reactivation required?

If you have a computer installed MyUSBOnly, and someday you decide to format the hard drive or reinstall Windows, then you only need to log in to your www.fetchlog.com website and delete the computer from "Computer" page to free-up your license count. When it is done, you can download the latest version MyUSBOnly from "Add Computer", then install MyUSBOnly again to your Windows.

If a reinstallation of the software is needed, is reactivation required?

If the same version of the software is reinstalled on the same machine and the hard disk is not reformatted prior to reinstalling, the software will remain activated. Reactivation will be required if the hard disk is reformatted and the software is reinstalled. This is because the software's activation status is stored on the hard drive and reformatting the



© MyUSBOnly, 2014

hard drive erases that status.

If you want to reinstall your Windows, you can backup the key.bin file for later restore.

Windows 2000/XP key.bin location: C:\Documents and Settings\All Users\Application Data\MyUSBOnly\key.bin

Windows Vista key.bin location: C:\ProgramData\MyUSBOnly\key.bin

Can MyUSBOnly work if we use Ghost / TrueImage

You can Ghost / TrueImage Windows which installed MyUSBOnly, MyUSBOnly will still able to work properly, of course, you need to ensure that you do not exceed the number of computers installed in your purchased MyUSBOnly number of License, note that the exceed installed MyUSBOnly will not working.

I do not want to activate. What can I do to turn this off?

Activation is required for continued use of the product. Businesses and other customers that need to acquire multiple licenses for an organization should contact MyUSBOnly support team regarding eligibility for purchasing licenses through one of MyUSBOnly volume licensing programs.

Is it possible to transfer a license to another computer?

Consumers should refer to the terms of their license agreement to determine whether or not it is legal to transfer a license to another computer. But in those cases where it is allowed, the product must first be removed from the previous computer. Users may be required to complete the activation on the new computer by online/offline registration or contact our support team.



© MyUSBOnly, 2014

About & Support

Open Online User Manual

-Web Download the latest version of MyUSBOnly User's Manual.

Submit Questions

-Web submit Question for Our Support Team



Symbol mean: The features has been activity or enabled.



Symbol mean: The features has been stop or disabled.

Symbol mean:

- 1.The features Demo/trial Version has been expired.
- 2.The Feature has been activity, but license expired.
- 3.The Feature hasn't been activity, but License activity.



© MyUSBOnly, 2014



Contact Information

For additional information and technical support, please contact IceDeep Inc,. support as follows:

Web: www.myusbonly.com

Email: support@myusbonly.com