

MONOPRICE®

Smart Data Link with
KM Switch

User Manual

MD-KM-PIP

Table of Contents

| | |
|--|----|
| Introduction | 3 |
| Specifications | 3 |
| Hardware Installation | 4 |
| AP Installation of USB Cable KVM with Data Link | 5 |
| The Icon Status | 9 |
| Remote Control Function of KM Switch with a Single Keyboard and Mouse | 10 |
| The Application of USB Cable KVM with Data Link | 11 |
| Remark | 12 |

Smart Data Link with KM Switch

Introduction

The Smart Data Link with KM Switch lets you access multiple computers and associated monitors by sharing a single keyboard and mouse to switch between two computers. This product has the Data Link function allowing you to copy files on desktop between two computers. And it is easy for you to cut texts and paste them between computers. The PIP mode is the value added to this device.



Features

- ◆ Picture in Picture (PIP) function.
- ◆ KM function allows user to control computers and associated display monitors.
- ◆ File transfer between two computers.
- ◆ Copy and Paste text between two computers.
- ◆ Performs **Data Transfer** between two computers.
- ◆ Data Link function conforms high speed USB specification.
- ◆ No CD software driver to install is needed.
- ◆ Switch Mode:
 1. Mouse movement.
 2. Application icon.
- ◆ No extra power is required.
- ◆ Windows XP, Vista and *7 (Home and Professional edition) compatible.

Specifications

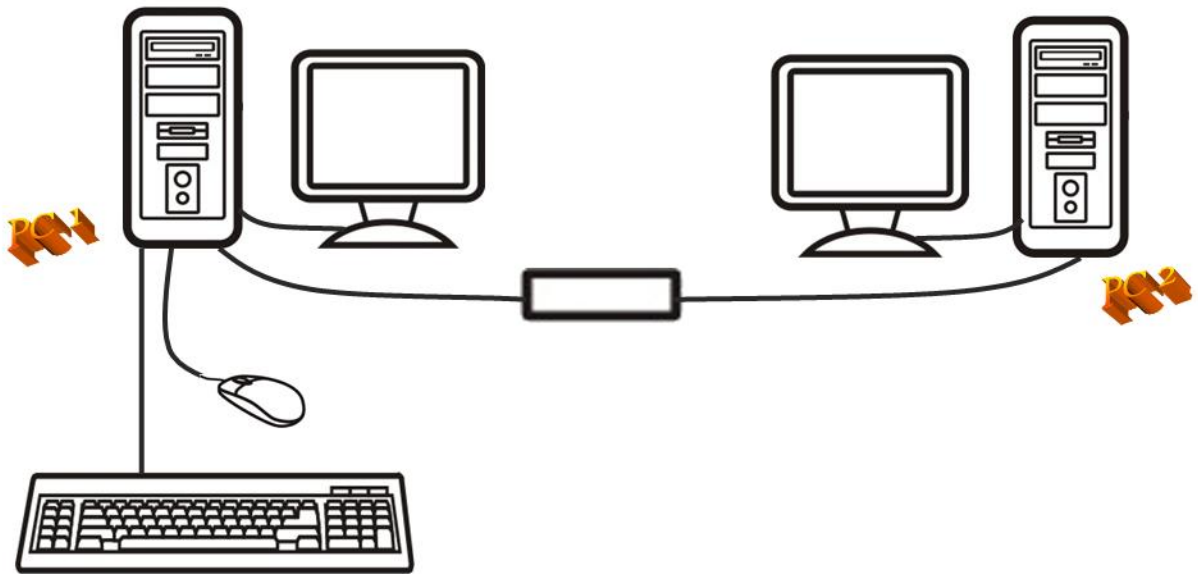
| Function | Specification |
|-----------------------|--|
| Item Number | MD-KM-PIP |
| PC Port | 2 |
| Cable Length | 1.5m or 2m |
| Operating Voltage | USB power (DC 5V) |
| Power Consumption | 85mA |
| Operating System | Windows XP / Vista / *7 |
| Weight | 45g |
| Dimension (L x W x H) | 40 x 15 x 10 (mm) or 45 x 20 x 10 (mm) |

* The specification is subject to change without further notice.

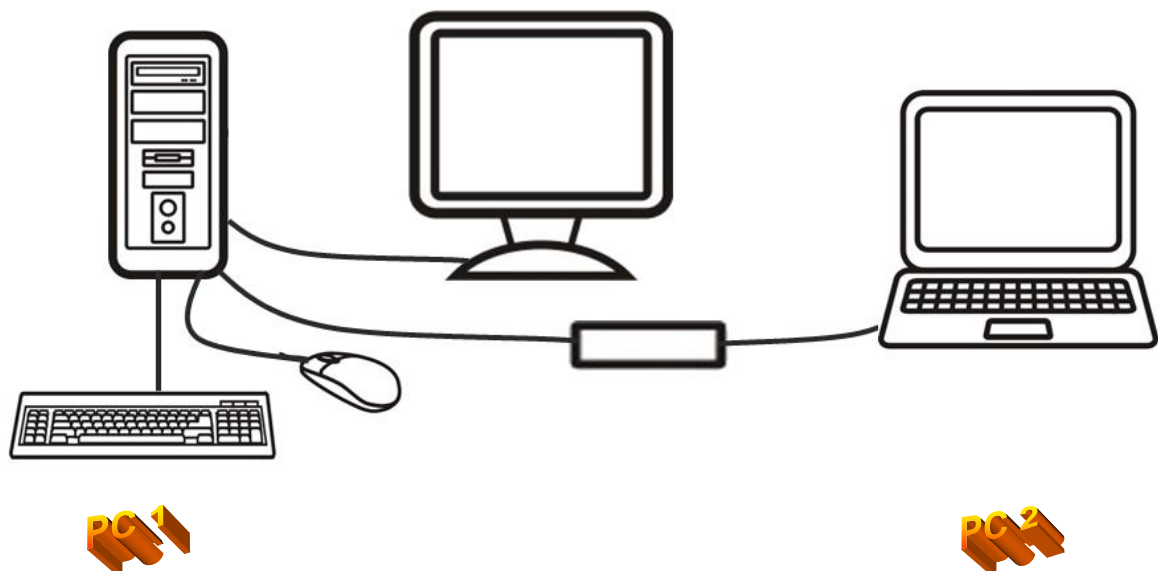
Package Contents

- 1 x Smart Data Link with KM Switch
- 1 x User Manual

Hardware Installation



OR



The device LED status (if applicable):

- Blinking: Connected to computers.
- Lighted: Data transferring or functions activity.

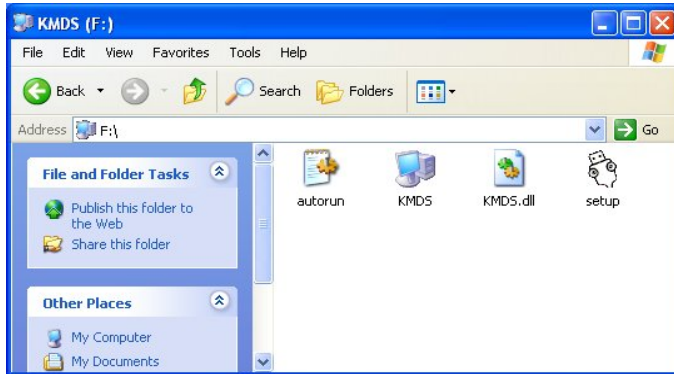
* Please connect the device's "R" connector to PC2 and "L" connector to PC1.


AP Installation of Smart Data Link with KM Switch


Windows

A. XP

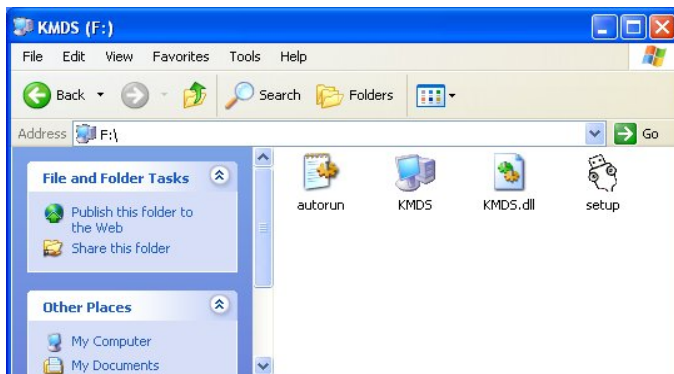
1. ICON PLAY: Turn on your computers and connect the KM Switch with your two computers (when prompted to restart your computer, click **Yes** to restart your system for the configuration changes). Please click KMDS icon of both computers to activate from pop-up screen.




Afterward the icon  appears from taskbar to indicate ready status. If you

click Exit  to leave or unplug KM Switch, you can double-click KMDS icon from MY COMPUTER to activate again.

2. AP PLAY: Please connect the KM Switch with your two computers (when prompted to restart your computer, click **Yes** to restart your system for the configuration changes). The pop-up screen appears as below.

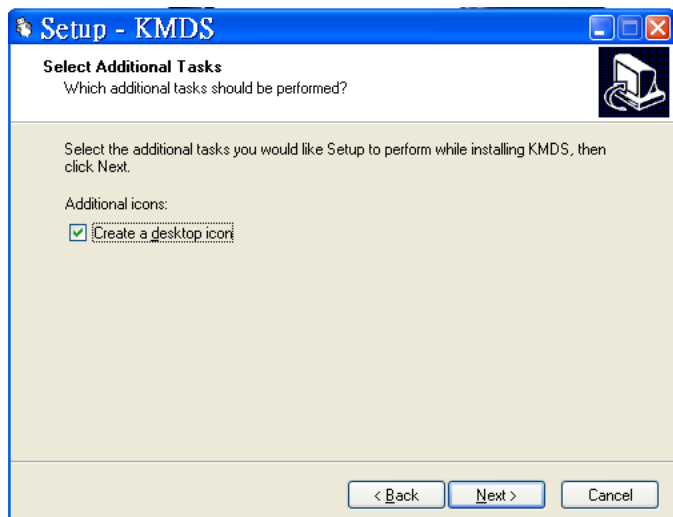


Please double-click  to install by following the installation procedures.

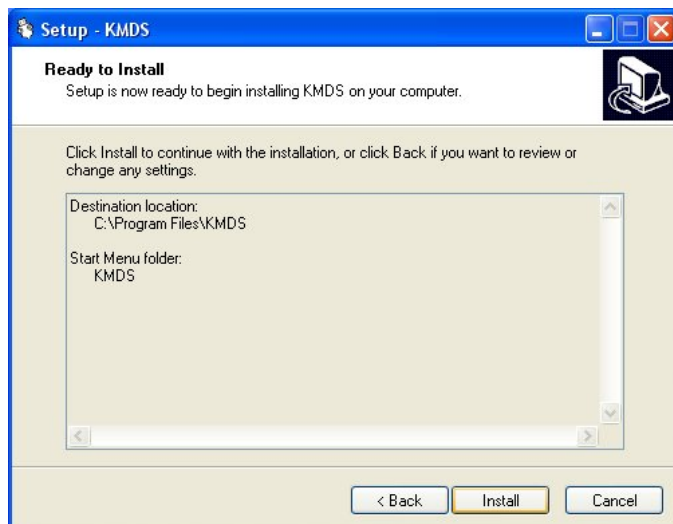
2.1 When the Welcome screen appears, click Next.



2.2 Create a desktop icon.





2.3 Click Install to start the installation.

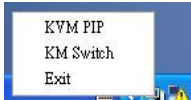


2.4 When the following screen appears, click Finish.



2.5 When the  icon appears on desktop and a small icon  appears from taskbar, the installation is completed.

2.6 Please double click  from desktop to activate KMDS if needed. (*The small

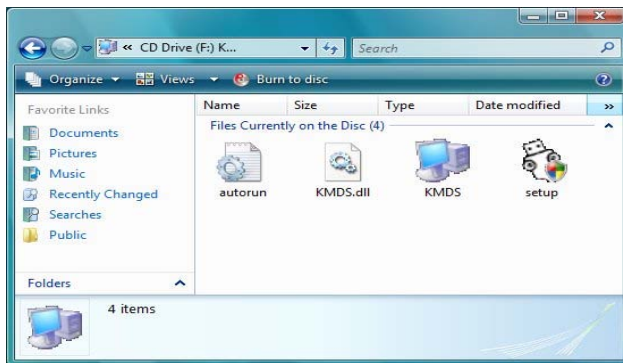
icon  indicates the ready status. **After installation is completed, the AP is in your computer. The KMDS can be automatically activated but please connect KM Switch with your computers before turn on computers. ***If you exit the function or unplug KM Switch, you can click KMDS from the desktop to activate).

B. Vista / Win 7

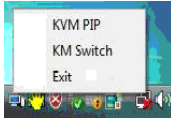
1. ICON PLAY: Turn on your computers and connect the KM Switch with your two computers (when prompted to restart your computer, click **Yes** to restart your system for the configuration changes). Please open COMPUTER and then click KMDS for both computers.



Please click KMDS icon of both computers to activate.




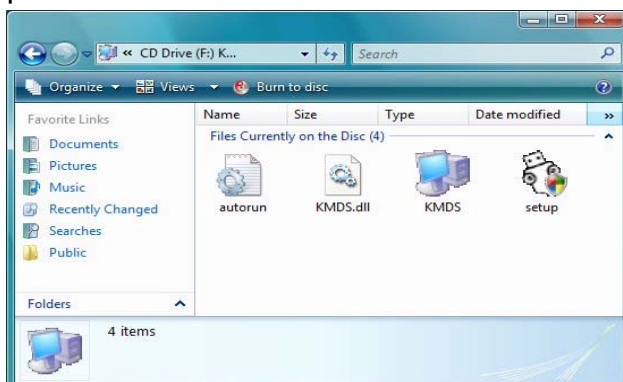
Afterward the icon  appears from taskbar to indicate ready status. If you click



 to leave or unplug KM Switch, you can click KMDS from COMPUTER to activate again.

2. AP PLAY: Please connect the KM Switch with your two computers (when prompted to restart your computer, click **Yes** to restart your system for the configuration changes). Click COMPUTER to pop-up the screen to find the AP files: 1)KMDS and 2)RAM Disk. Please click KMDS from the screen.

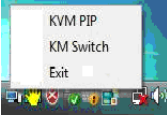


2.1 Please double-click  to install KMDS by following the installation procedures.




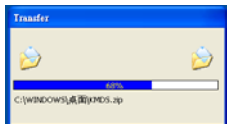





When the  icon appears on desktop and a small icon  appears from taskbar, the installation is completed.

2.2 Please double click  from desktop to activate KMDS if needed. (*The small


icon  indicates the ready status. **After AP installation is completed, the AP is in your computer. The KMDS can be automatically activated but please connect KM Switch with your computers before turn on computers. ***If you exit the function or unplug KM Switch, you can click KMDS from the desktop to activate).

C. The Icon Status:

1. KM Switch function selected: 
2. KVM PIP function selected:  (left-click on icon to pop-up or close)
3. Data transfer:  and pop-up window 
4. The KMDS on computers is off-line: 
5. The KMDS on computers is on-line: 
6. The function display window: 

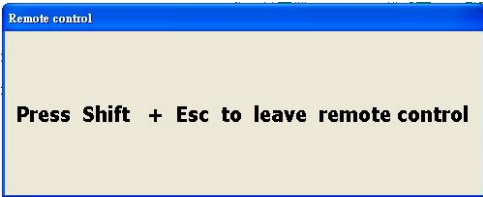
Remote Control Function of KM Switch with a Single Keyboard and Mouse

When you start your computers every time, you can use the Remote Control function to type password for the computer that is **without** the keyboard and mouse connected. And, you can use this valuable function to activate KMDS of the computer if you click

Exit  to leave or unplug KM Switch.

1. Please connect the KM Switch with your two computers and then turn on both

computers. Click taskbar icon  and KM Switch  to switch.

(During the process the screen  appears. This is to let you switch back to original computer to avoid any unforeseen circumstances).

2. Now, you can type your password to start the computer.



3. The mouse cursor will be back to the original computer and then click KM switch again to slide the mouse cursor to the other computer. Please follow the AP installation procedures to select ICON PLAY or AP PLAY if needed.

The Application of Smart Data Link with KM Switch

A. This device lets you access two computers and associated monitors by sharing a single keyboard and mouse. It is easy to move the cursor by a mouse sliding to control between two computers.



B. The Picture in Picture (PIP) mode is the value added to this device and is suitable for a single display monitor.



C. This product also combines the Data-Link function allowing you to copy files on desktop between two computers under KVM PIP mode or KM Switch mode.



D. It is easy for you to cut and paste texts within KVM PIP mode or KM Switch mode.



Remark:

1. *The file transfer and cut & paste text function: We recommend to use same operating language between two computers to avoid error code happened.*
2. *The file transfer function: Only support desktop file transfer. Please note, the same file name will be overwritten without further notice.*
3. *The Picture in Picture (PIP) mode: It is not suitable for media watching in inset window. The PIP mode can only be activated with the computer that is connected with keyboard and mouse.*
4. *Please **do not** unplug KM Switch device while the current data transfer is in progress or KMDS is functional. This can cause the unforeseen loss of data or temporary inactive.*
5. *The PC authority should be a member of “ADMINISTRATORS” not “USERS”.*
6. *If any unforeseen circumstances occur during the use, you must click Exit to leave function then unplug & plug KM device and click KMDS icon to activate.*
7. *Please note, we do not recommend users to use this device with OS Windows XP (64bit) due to slow data transfer speed.*
8. *The maximum resolution of monitor is up to 2,560 x 1,920 with KVM PIP mode.*