

OPTIMUM HDD

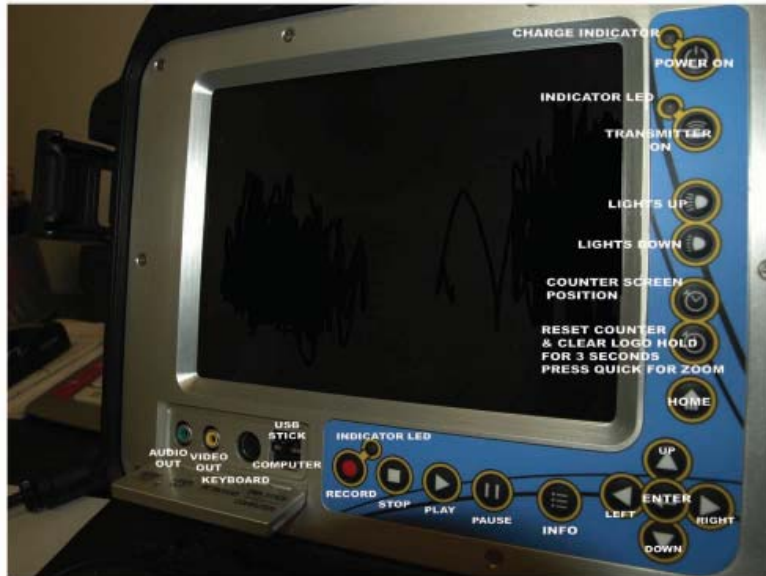
HARD DRIVE AND USB
RECORDING SYSTEM
USER MANUAL



www.hathorncorp.com
phone 905-886-2835



KEY FUNCTIONS



MOUNTING STAND





Optimum HDD

Step 1: Adjust command module support stand to upright position (see insert)

Step 2: Place command module on support stand (see insert)

Step 3: Plug patch cable into side of control module.

Step 4: Open latches on side of control module and lower lid.

Step 5: Press “ON” button (top right corner) Wait for unit to power up.

Step 6: Press right arrow key, move curser to “SETUP”

Step7: Press “ENTER” button on upper keypad (see fig 1)

Step8: Press right arrow key, move curser to “REC” on top of screen.

Step 9: Press “ENTER” and select record quality by moving up and down arrows. HQ is the highest resolution, SLP is the lowest. Press “ENTER” to select resolution. Resolution will always remain were you last set it.

Step 10: Press down arrow key to “REC Device” then press “ENTER”. Select were you want to record to by using the up and down arrow keys. “ HDD” stands for Hard Drive. “USB#1” stands for USB stick. Do not use USB#2. Once you have selected were you want to record press “ENTER” key. Record destination will always remain were you last set it.

Step 11: Press “HOME” Key. (looks like a house)

Step 12: Press right or left arrow keys and navigate to “VIDEO IN”. Press “ENTER” key to bring up display. Picture should be on screen with LOGO and reel type.

Step 13: Open Aluminum door on UPPER panel. (bottom left) Plug key board into keyboard port. (flat side up)

Step 14: Press space bar or enter key on keyboard to select reel type.

Step 15 : Press “RESET” button on upper KEYPAD to lock in reel type and clear LOGO from screen. 3 second press (see fig 1) System will default to last reel selected.

RECORDING and WATCHING VIDEO

Press “RECORD” button on keypad, red light will come on while recording, also an indicator will show on the top left corner of the screen. If you pause the recording the red light will flash. To stop PAUSE recording press the “PAUSE” button again. To stop the recording press the stop button.

To view your recordings press the “HOME” button on keypad. Press right arrow button and navigate to “BROWSER”. Press the “ENTER” button. Press the up and down arrow buttons to navigate to the drive you recorded to. (USB or HDD) Once you have selected the drive press the “ENTER” button. Navigate to the “MY RECORDINGS” file. Press the “ENTER BUTTON”. Use the up and down arrows to navigate to the recording you wish to select.

TO play the selected recording press the “PLAY” button. Press “STOP” button and the screen will return to the last menu. You can also pause the recording with the “PAUSE” button.

To rename or delete the recording press the “INFO” button. Select the task you wish to perform then press “ENTER”

RENAME: Use the up, down, right and left arrow buttons to move to the letters or numbers you wish. Then press “ENTER” over each letter. Select “OK” when you have named your recording. **NOTE.** The name you use must have a number in the front of it. Example 123 John street

DELETE: Use the down arrow button and select delete. Press the “ENTER” button and confirm delete.

NOTE If you get lost in the menu or need to start over at any time press the “HOME” button. If the unit malfunctions or get hung on a menu you must turn off and restart the system.

NOTE Press the counter reset button (quick press) to activate the **zoom** feature

Use the arrow keys to move around the screen.

Key Board Functions

The keyboard can be used to type information into the recording. Plug in key board and press a page key (F1 – F 8) . Type onto screen like a normal key board. Use the arrow keys to move curser around screen. Use the back space key to remove the letters from the screen.

F1- brings up page 1

F2- brings up page 2

F3- brings up page 3

F4- brings up page 4

F5-brings up page 5

F6- brings up page 6

F7 brings up page 7

F8 brings up page 8

F9- hides page and recalls last page viewed

F10- **deletes** page

F11- changes back ground behind text

F12- saves what is displayed on the viewed page into the memory

For F11 and F12 press function key and corresponding key F9 or F10

Example – A company name and address can be saved on a page into memory then shown at the beginning of each survey when that page is displayed.

Space bar- skips a space

Back Space key- to move backwards on line and delete letters

Arrow keys move curser around page

Enter key- toggles reel selection **only** at start up before reset key is pressed, then the last setting is saved to memory

Escape key- toggles overlay contrast

Pause/ Break key Toggles **speaker** on and off , speaker symbol on screen has a line through it when speaker is off. (the speaker must be turned on to hear in playback mode)

OPTIMUM HDD 8.4

CHARGING CIRCUITS

CHARGING THE BATTERY

Use only the power supply that came with the unit. A different power supply may damage the unit or not allow charging of the battery.

IF THE UNIT IS POWERED OFF THE GREEN LIGHT WILL FLASH ON THE KEYPAD

EVEN FLASHING- Battery is being charged properly

RAPID FLASHING- Battery is hot and will start charging once it has cooled. Usually happens after running the battery down and charging right away.

LONG GREEN SHORT OFF- Battery is fully charged

IF THE UNIT IS POWERED ON, THE ON SCREEN DISPLAY WILL SHOW STATE OF CHARGE

EVEN ANIMATION OF BATTERY BARS filling up battery - The battery is being charged properly

BATTERY FLASHING WITH ONE BAR - The battery is hot and will begin charging once it has cooled.(May take up to one hour or more to cool)

BATTERY FLASHING EMPTY- The battery needs charging and should be charged ASAP

USER MANUAL

1 Safety precautions

- * Please do NOT put it near a place with high-temperature, dust or vibrating conditions while running.
- * Please make sure to use the original power adaptor provided by us. Other power adaptor may cause damage to the machine.
- * Hard disk inside is a very delicate device, shocking may cause damage to the machine.
- * Magnet devices may cause the loss of the datum inside the hard disk. Please keep the machine away from magnet devices.
- * Please do NOT use chemical solvent to clean the machine.
- * Please ask for help from professionals to repair after the machine has problems.

Remote Control

1. Power standby 2.

Number buttons

3. go to

4. VOL+

5. SETUP

7. UP

9. BROWER

11. Previous

13. PAUSE

15. SUBTITLE

17. COPY

19. SELECT.

6. VOL-

8. LEFT

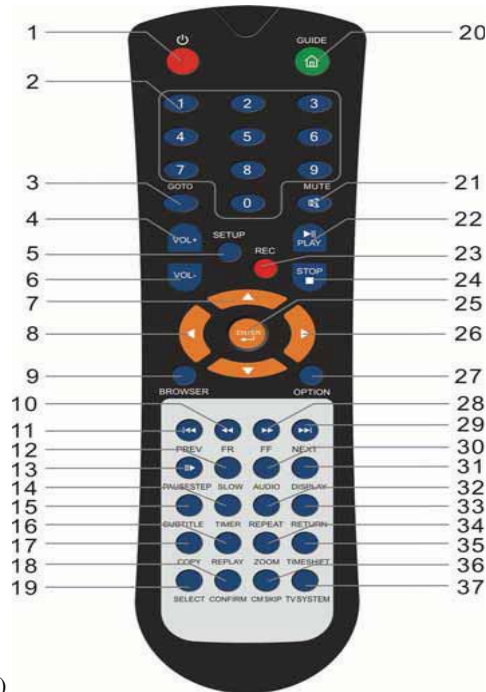
10. Fast backward

12. SLOW

14. TIMER

16. REPLAY

18. CONFIRM



20. GUIDE(HOME)

21. MUTE 22. PLAY

23. REC 24. STOP

25. ENTER 26. RIGHT

27. OPTION 28. Fast forward
29. NEXT 30. AUDIO
31. DISPLAY 32. REPEAT
33. RETURN 34. ZOOM
35. TIMESHIFT 36. CM SKIP
37 TV SYSTEM

Function Instruction

4.1 Home Menu

Power on the AV HDD system, you can see the loading page.

After a few second, the system will enter a guide menu. To enter this menu, press HOME KEY on the remote control



4.1.1 Selecting Video In

To select an input source, select **Video In** button on the guide menu page.

4.1.2 Selecting file Copy

To enter the "File copy" Menu allows you to copy files from ,USB, ,HDD to each other.

4.1.3 Selecting Browser

Select **Browser** button on the guide menu page to browser movie files stored either on a HDD, or a USB device.

4.1.4 Selecting Setup

To enter the setup menu, select "Setup" Key on the remote control or select **Setup** button on the guide menu page.

4.1.5 Selecting Time REC * NOT USED *

4.2 Video In Menu

The Video in menu allows you to look, record or review the content being lined in the unit. When you come in the Video in Menu, you would see the follow page:

4.2.1 Timeshit * NOT USED *

4.2.2 Recording

Press REC key to start the OTR(one touch recording) function. Press repeatedly to set OTR length (30 mins / 60 mins / 90 mins / 120 mins / 180 mins /Off).

4.3 Browser Menu

The Browser menu allows you browse and play movie files stored on a HDD or an external USB \Card device.

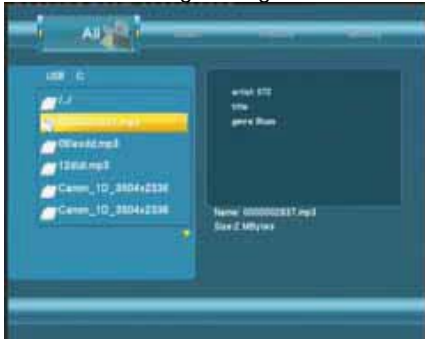


To enter the menu, select **Browser** from the **Home** menu.

Press UP or DOWN ARROWS to select the device on which the media is stored. Choose from HDD, USB (for media stored on an external flash disk) PRESS ENTER

4.3.1 Browsing All/Music/Photo/Movies

Use the left and right navigation arrows to select the **All/Music/Photo/Movies** tab.



Press UP and DOWN to select the folder(s) containing your all files (Beside Music, Photo and Movie). Enter the folder press UP and DOWN to select the file you want to view and press ENTER to play.

4.3.2 File Edit Menu



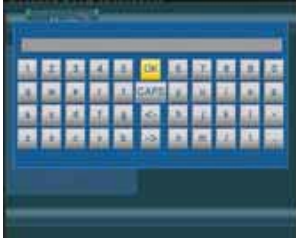
Press UP and DOWN to select the file or folder, press DELETE key to display the Edit tab.

Return Select to return to the main screen.

Rename To rename a file, do the following:

1. Press UP and DOWN on the remote control to select the **Rename** tab from the menu bar.

2. Press ENTER on the remote control. The name entry screen appears.



3. Use the navigation arrows to select letters and numbers. Select **CAPS** to toggle between uppercase and lowercase letters. Press <- to delete a letter. Press -> to insert a space. Press ENTER to input each letter or number.

4. Once you have entered the new name, select **OK** and press ENTER to confirm all changes.

If you want to cancel the naming during the process, press RETURN.

Delete To delete a title, do the following:

1. Press UP and DOWN on the remote control to select the **Delete** tab from the menu bar.
2. Press ENTER to confirm and delete the file.
3. A confirmation message appears. Press UP or DOWN and select **OK**.
4. Press ENTER to delete the selected file. To cancel delete, select **Return**.

4.4 Timer Record Menu * NOT USED *

4.4.1 Creating a New Schedule * NOT USED*

4.4.2 Editing Schedules * NOT USED*

4.5 SETUP MENU

The Setup Menu allows you to configure video, record and system settings.

To enter the menu, select **Setup** from the **Guide** menu or select on the remote control.



4.5.1 Changing “Video” Settings NEVER CHANGE THE VIDEO SETTING TV SYSTEM OR HD OUTPUT , DOING SO

MAY CAUSE THE PICTURE TO BE LOST AND THE UNIT WILL NEED SERVICE. YOU CAN ONLY ADJUST THE BRIGHTNESS AND CONTRAST.

Brightness Select to set brightness levels.

Press UP and DOWN to adjust brightness. The new setting is previewed onscreen. Press ENTER to confirm.

Contrast Select to set contrast levels.

Press UP and DOWN to adjust contrast. The new setting is previewed onscreen. Press ENTER to confirm.

4.5.2 Changing “REC” Settings



Press LEFT and RIGHT on the remote control to select the **Record** tab from the menu bar.

23

Quality Select to set the default recording quality setting.

Press UP and DOWN to select the quality setting you require.

The highest quality setting is HQ which requires the most storage space. The other settings reduce recording quality sequentially but also require less storage space. Press ENTER to confirm.

Permanent Timeshift NOT USED

Rec Device



Select to adjust the device to be recorded in.

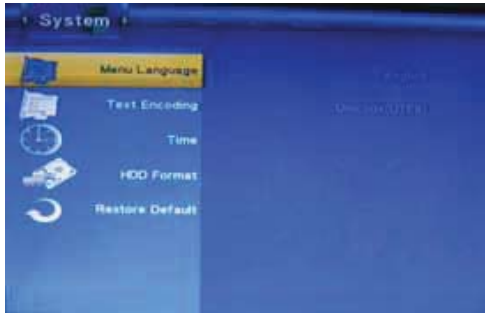
Press UP and DOWN to select the device you require.

Press ENTER to confirm.

TimeShift Device NOT USED

4.5.3 Changing “System” Settings

Press LEFT and RIGHT on the remote control to select the **System** tab from the menu.



Menu Language Select to choose the OSD (On Screen Display) language.
Press UP and DOWN to select the language. Press ENTER to confirm.

Time

Enter the system menu and press LEFT and RIGHT to select each field and the up and down navigation arrows to adjust each setting.
Press ENTER to confirm.

HDD Format Enter format Hard Disc
25

Restore Default Select to restore factory defaults.

A confirmation message appears. Select CONFIRM and press RETURN to restore all settings to defaults.

4.5.4 Changing “Network” Settings NOT USED

4.6 File Copy Menu

The File copy Menu allows you to copy files fromt,USB,CARD,HDD each other.

To enter the menu, select **File Copy** from the **Guide** menu or select “COPY”key on the remote control.

4.6.1 Step 1. Select Source Device

When you enter the File copy interface, press UP and DOWN to select the device which your want to copy first.

Then press RIGHT to select Destination Device, press LEFT to return.



4.6.2 Step 2. Select Destination Device

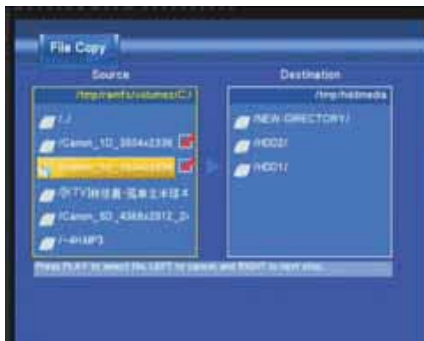
When into Destination sector, press UP and DOWN to select the device of the Destination.



Then press RIGHT to next step, and press LEFT to return.

4.6.3 Step 3. Select copy files or folders

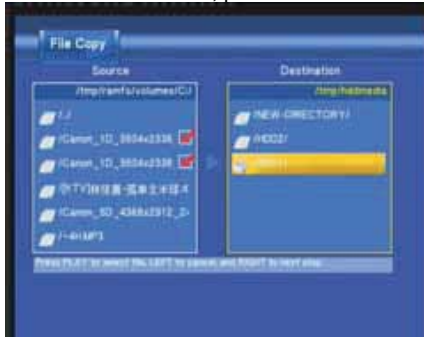
At Source sector, press UP and DOWN to select and press **Play** to select file or folders which you want to copy. When you succeed to select, at the file or folder name right side will display .



Then press RIGHT to next step, and press LEFT to return.

4.6.4 Step 4. Select the folders of Destination

At Destination sector, press UP and DOWN to select the folders of destination.

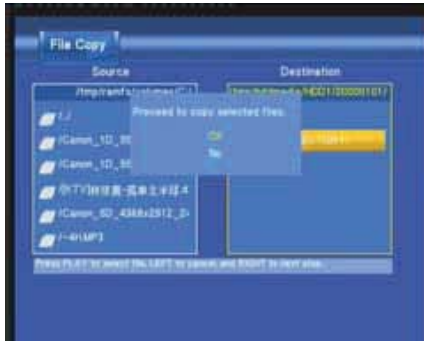


Then press RIGHT to next step, and press LEFT to return.

4.6.5 Step 5. Copy Status

At Pop menu, select OK to copy, select No to cancel.

When copy succeed, the system will display "File Copy Completed!"; if failed, the system will display "File Copy failed!"

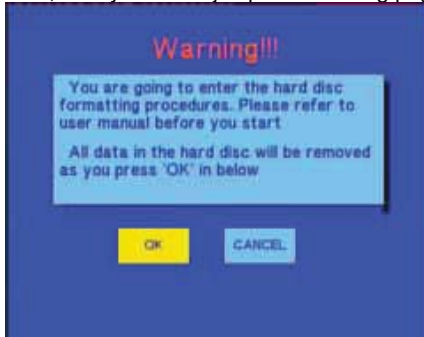


When the File Copy completed! You can select “OK” to browser files, or select “No” return Video.

5 Format Hard disc

When you insert a Hard disc on the system at the first time, System will remind you to enter the Hard disc format interface. You can also press “Setup” Key into Setup menu and select HDD Format to Format HDD.

First, the system will jump to a warning page.



Press LEFT and RIGHT on the remote control to select your wish.

When highlight move the OK button, Press to enter the next step. Otherwise, select cancel to return.

5.1 The first step

Step 1: FAT32 & NTFS Partitioning

Use a 100% FAT 32 drive for best results



Use UP and DOWN to adjust the Fat32 and NTFS partition.

Press LEFT and RIGHT on the remote control to select back or next.

When highlight move the Next button, Press ENTER to enter the next step. Otherwise, select back button to return.

5.2 The second step

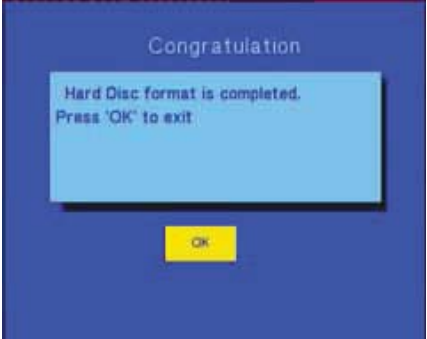
Step 2: Hard disk format



Press LEFT and RIGHT on the remote control to select back or format.
When highlight move the Format button, Press ENTER to start. Otherwise, select back button to back.

5.3 Congratulation page

When complete the format, the system will display the congratulation page.



Select OK button and Press ENTER to exit.

6 Network Setting * NOT USED*

SPECS

RECORDABLE DEVICES SUPPORTED:

.BUILT IN HDD(Fat32)

.USB HDD(Fat32)

VIDEO RECORDING FORMAT

.HQ/SP/LP/EP/SLP mode: MPEG-2 MP@ML

AUDIO RECORDING FORMAT

.HQ/SP/LP/EP/SLP mode: MP2 2-chanel

VIDEO RECORDING MODE

Mode	80 GB HDD	120 GB HDD	160 GB HDD	320 GB HDD
HQ	16hrs	24 hrs	33 hrs	66 HRS
SP	32hrs	48 hrs	66 hrs	120 HRS
LP	48hrs	72 hrs	99 hrs	
EP	64 hrs	96 hrs	132 hrs	
SLP	96 hrs	144 hrs	198 hrs	

Note: The specifications and design of this product are subject to change without notification.

Hathorn Corporation
SEWER CAMERA LIMITED WARRANTY
www.hathorncorp.com

1. Limited Warranty Coverage. This Limited Warranty consists of a Warranty, which provides one full year of coverage under our manufacturer's standard new product warranty. Hathorn Corporation warrants to the original purchaser of the product herein registered that the product shall function properly for a period of one year from the original date of purchase under normal and proper usage. This one year Limited Warranty covers malfunctions resulting from defects in materials or workmanship only. If the Hathorn Corporation product fails to function properly under normal and proper usage due to defects in materials or workmanship during the period of this Limited Warranty, Hathorn will repair, adjust or replace defective parts as Hathorn deems appropriate.

This Limited Warranty is only available to the original purchaser; it is not transferable under any circumstances.. This Limited Warranty applies only to Hathorn Corporation sewer camera systems that are distributed in the United States and Canada and purchased from a Hathorn Corporation authorized dealer. This Limited Warranty does not apply to Hathorn brand products imported and sold in the U.S.A. by unauthorized dealers, distributors or other sellers.

2. Not Covered. This one year Limited Warranty does not cover damage or malfunctions stemming from other than normal and proper usage. This Extended Limited Warranty also does not cover the following: (a) intentional or accidental misuse or abuse (including, but not limited to, damage to push rod from excessive force), (b) failure to follow operating or maintenance instructions, (c) repairs by any individual or entity other than an authorized Hathorn Corporation Repair Center, (d) product components, accessories or consumables not manufactured by Hathorn Corporation (e) product tampering, (f) droppage, (g) battery leakage if equipped, , (h) media cards. Hathorns responsibility under this Limited Warranty is limited to the repair, adjustment or replacement of defective parts as determined by Hathorn Corporation in its sole discretion. Routine cleaning and normal cosmetic wear and tear are not covered by this Limited Warranty.

3. LIMITATION OF LIABILITY. BY YOUR ACCEPTANCE OF THIS LIMITED WARRANTY, YOU AGREE THAT HATHORN CORPORATION SHALL HAVE NO LIABILITY TO YOU FOR ANY DAMAGES RESULTING FROM DELAY OR LOSS OF USE OF THE PRODUCT IN SERVICE OR REPAIR. HATHORN SHALL HAVE NO LIABILITY FOR GENERAL, SPECIAL, INCIDENTAL OR CONSEQUENTIAL DAMAGES ARISING OUT OF BREACH OF THIS LIMITED WARRANTY. HATHORN CORPORATION ASSUMES NO RESPONSIBILITY FOR WARRANTIES EITHER EXPRESSED OR IMPLIED BEYOND THAT WHICH IS CONTAINED HEREIN.

4. Obtaining Service. If the product requires service, please pack it carefully using ample packing material in order to prevent damage during shipment and mail it postage prepaid and insured to Hathorn Corporation 75 West Beaver Creek Road Unit 7 , Richmond Hill Ontario, Canada , L4B1K6 and include proof of purchase of the Product (invoice). The Product can also be shipped to the dealer from where it was purchased. When service is completed, your product will be returned to you postage collect. Hathorn Corporation is not responsible for damages or loss incurred in connection with mailing and/or transportation of product. In your package, please include the following:

(a) **A copy of the sales receipt** showing the date and place of purchase.

(b) All accessory items that may be related to the problem.

(c) A detailed description of the problem.