

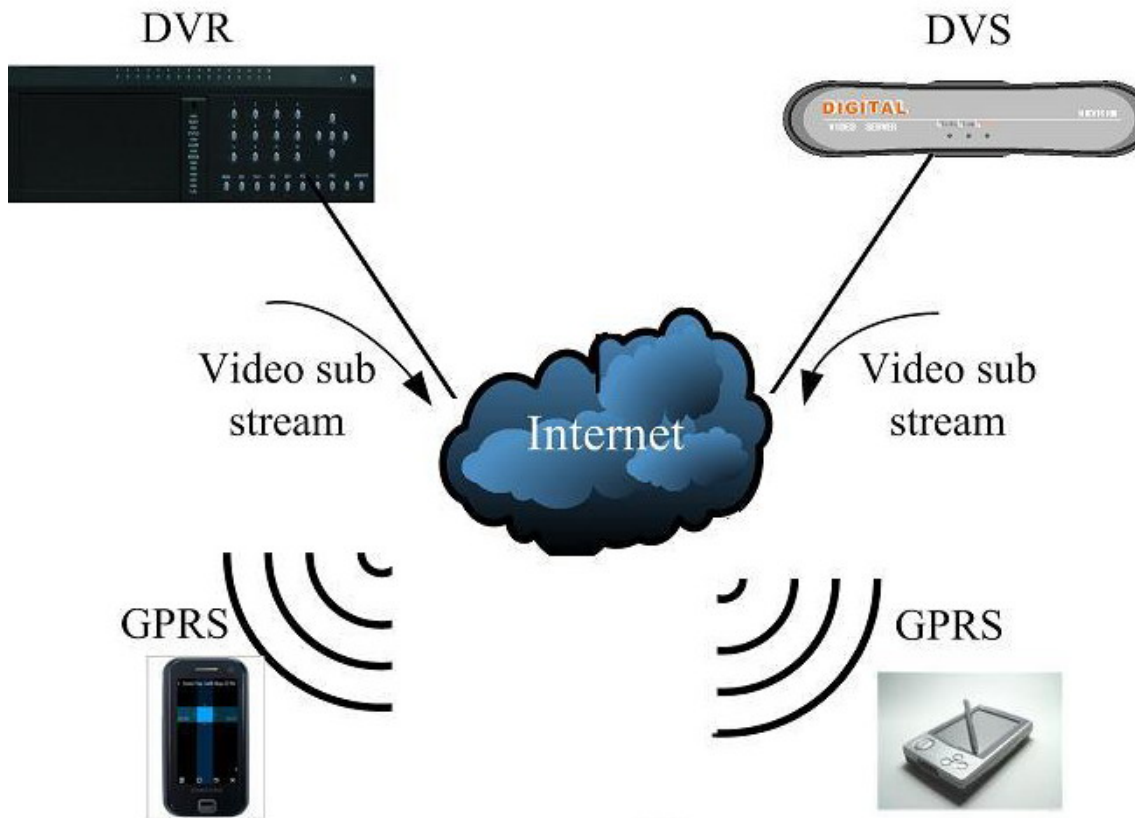
Direct Connection Cell Phone / PDA Surveillance User Manual V1.0

Index

Chapter1	Cell Phone / PDA Surveillance Introduction	3
1.1	Typical Application	3
1.2	Function Description.....	4
1.3	Performance Description.....	5
1.4	DVR Configuration.....	5
1.5	Operating Environment.....	6
1.6	Recommended Cell Phone List.....	6
1.7	Cell Phone Surveillance Software Installation.....	6
Chapter2	Cell Phone Surveillance Software Guide	7
2.1	Main Interface Description	7
2.2	Device Management	7
2.3	Login DVR.....	11
2.4	View Live Video	12
2.5	Image Zoom	13
2.6	Stop Live View.....	14
2.7	Language Switch.....	14
2.8	Logout/Quit System	14

Chapter1 Cell Phone / PDA Surveillance Introduction

1.1 Typical Application



Direct Connection Mode Surveillance

DVR or DVS has one Internet IP, and should support sub stream function. You should setup correct sub stream parameter by remote client software via network.

In cell phone or PDA, you should download one Java decoding software. Cell phone or PDA can login DVR/DVS via internet, receive QCIF resolution live video for decoding.

1.2 Function Description

The cell phone surveillance software mentioned below refers to direct connection mode cell phone surveillance software.

Through cell phone wireless network, cell phone monitoring software can be used to login DVR, DVS or IP Camera, request sub stream live video and browse the images in cell phone.

Main functions:

1. Device Management

Add, edit or delete the devices in cell phone. The devices added by the user will be saved in the cell phone, and they will be loaded automatically when starting the software. It is not necessary for the user to input the device information frequently.

2. Language Switch

This version can support Chinese and English and it also support the switch between Chinese and English.

3. Login Device

User can select any one of the devices having been added to login. After logging in successfully, it will return to the channel list of this device. If login is failed, it will remind the user the cause.

4. Live View

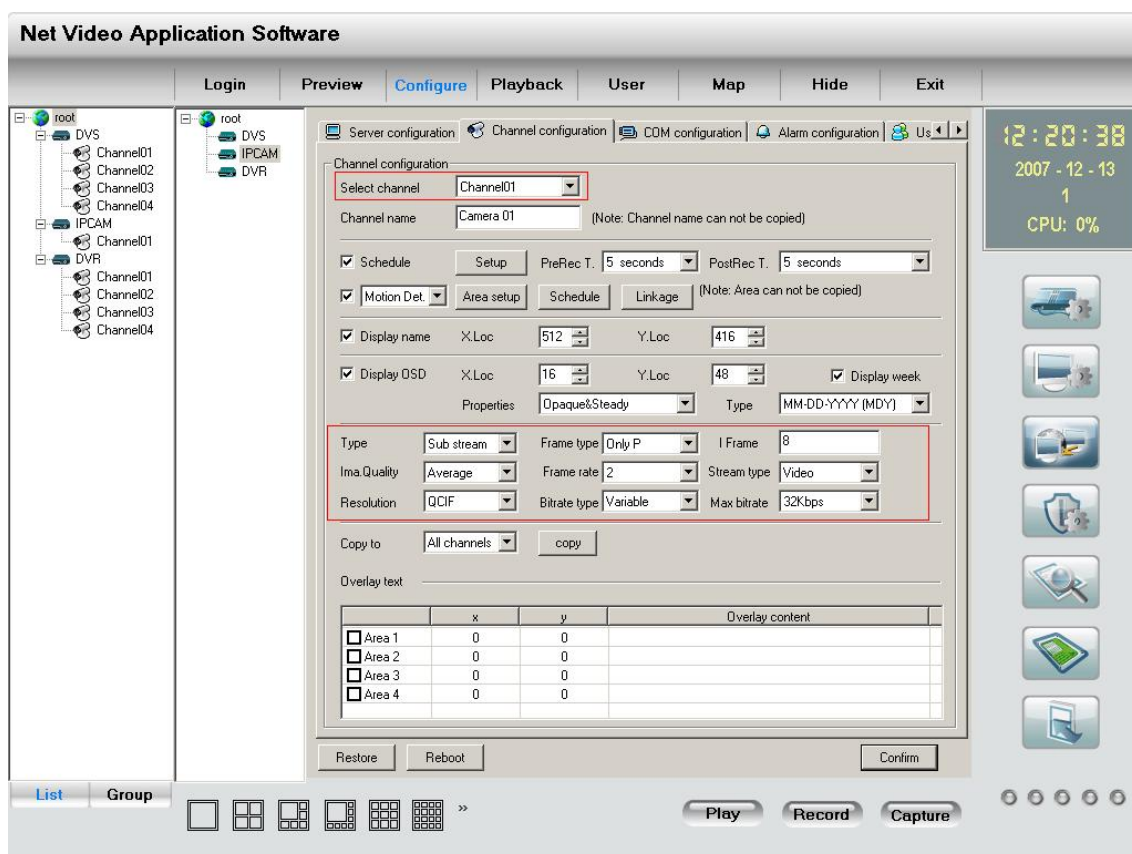
After logging in successfully, the user can select a channel to view live video. After stopping the browse, other channels can be selected to continue browsing.

1.3 Performance Description

Maximum allowable device number: 64

1.4 DVR Configuration

1. Please make sure that your DVR has Internet IP, and can be accessed via internet.
2. Please make sure that your DVR supports dual stream (main stream and sub stream). In some model DVR, you should enter into DVR “Network” menu to enable “sub stream” function.
3. Please use remote client software to setup camera sub stream parameters.



Stream type: Sub stream;
 Frame type: Single P frame;
 I frame interval: 8;
 Frame rate: 2 frame/second;
 Resolution: QCIF;

For example, above picture displays correct sub stream parameters of camera1. You can copy to all cameras, click “Confirm” button to save parameters and reboot DVR via network.

1.5 Operating Environment

Hardware environment: Smart phone / PDA (support CLDC1.0, MIDP2.0 or higher versions).

1.6 Recommended Cell Phone List

Following cell phone passed test. We will update list without notice.

Nokia 7610

Nokia N72

Nokia N73

Nokia N75

Nokia N95

Samsung E848

1.7 Cell Phone Surveillance Software Installation


The installation files include MobileToDevice.jad and MobileToDevice.jar. After copying them to the mobile phone, open the file “MobileToDevice.jad” to enter installation procedures.

[NOTE]: We recommend you to install the software into local mobile phone instead of memory card. If you want to install it into memory card, please make sure that the card is not encrypted. Otherwise the software can't be used after restarting the mobile phone.

It is successfully installed after the dialog box “Finish” pops up.

Chapter2 Cell Phone Surveillance Software Guide

2.1 Main Interface Description

After the installation, you can see the logo of main program.  . Open the main interface of the mobile phone monitoring software, as shown in figure 2-1:

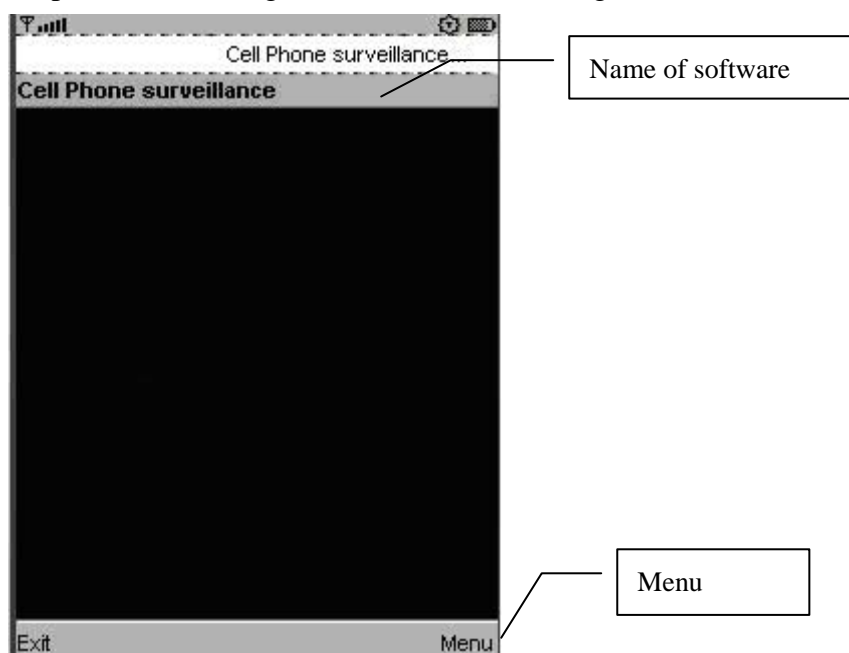


Fig. 2-1 Main interface of the program

Note: The button “Menu” will be shown in different names according to the types of mobile phones.

2.2 Device Management

Click the menu “Menu” in the main interface, as shown in figure 2-2:



Fig. 2-2 Menu of the main interface

Select the menu item “Browse the devices” to enter the device list, as shown in figure 2-3:

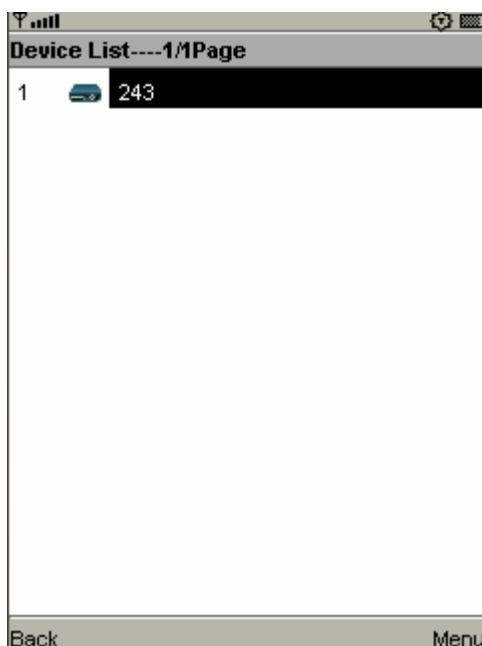


Fig. 2-3 Device List

All the added devices will be listed in the device list. Click “Menu” after selecting the device, the menu as shown in figure 2-4 will pop up:



Fig. 2-4 Device Menu

“Login”: Click “Login”. See subsection 2.2.3 for detailed instruction.

“Delete”: Click “Delete”, and then a dialog box for confirming to delete the device will pop up, as shown in figure 2-5. Click “Yes” to delete the device or click “No” to return to the device list.

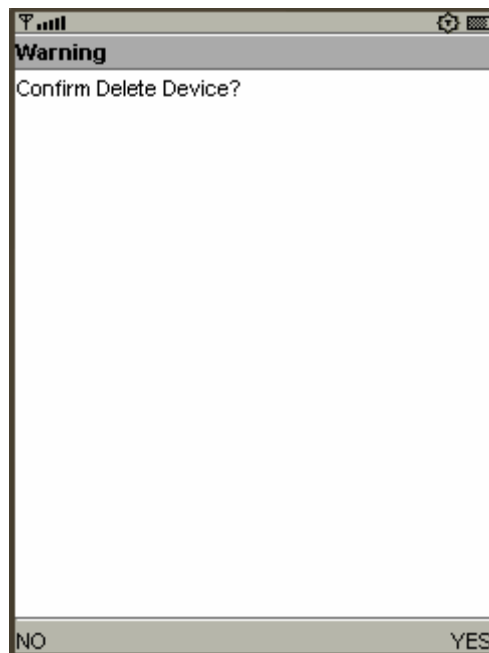


Fig. 2-5 Dialog box for confirming deleting the device

“Edit”: Click “Edit”, and then interface for editing device will pop up, as shown in figure 2-6. Click “Save” to confirm the modification or click “Return” to cancel the modification.



Fig. 2-6 Interface for modifying the device

“Add”: Click “Add”, and then the interface for adding device will pop up, as shown in figure 2-7. After inputting the parameters, click “Save” to confirm adding the device or click “Return” to cancel adding device.

The screenshot shows a mobile application interface for adding a device. The title bar at the top displays signal strength bars, the text 'ABC', and a battery level icon. Below the title bar is a header section labeled 'Add Device'. The main content area contains five text input fields, each preceded by a label: 'Device Name', 'Device IP', 'Device Port', 'User name', and 'Password'. At the bottom of the screen, there is a navigation bar with two buttons: 'Back' on the left and 'Save' on the right.

Fig. 2-7 Interface for adding device

Device Name: Self-defined device name

Device IP: IP address of the device

Device Port: Port for monitoring the device (The default port is 8000.)

User name: User name of device (the default name is admin.)

Password: Password of the device (The default password is 12345.)

2.3 Login DVR

Select the menu item “Login” of “Menu” in the device list to start login the device. The dialog box “Is it ok to use network” will pop up, as shown in figure 2-8:

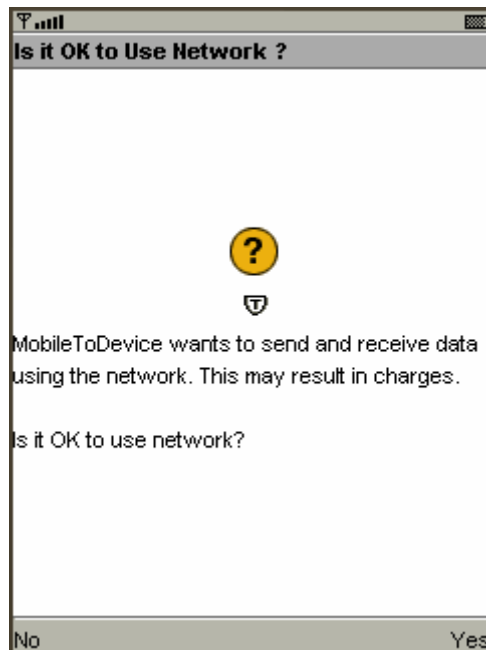


Fig. 2-8 Interface for confirming connecting to network

Select “Yes” and it will prompt “User login”, as shown in figure 2-9:

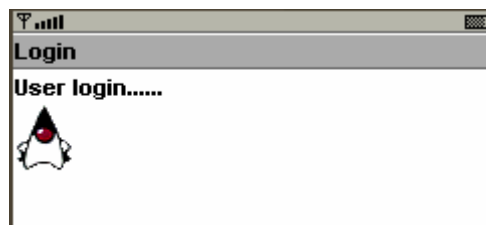


Fig. 2-9 Login Window

It will list the channels when login is successful.

If it fails to login, the failure cause will pop up. Click “Confirm” to return to the device list.

2.4 View Live Video

It will enter the channel list when it is successful to login, as shown in figure 2-10:

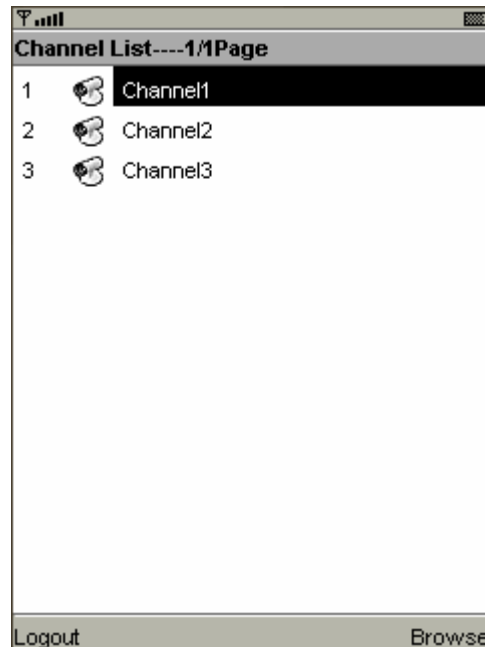


Fig. 2-10 Main menu for login status

The channel list uses the multi page display mode. The up and down keys on the keyboard of mobile phone can be used for controlling the up and down movement. And the left and right keys will be charged for page down and page up. Select a channel and then click the menu item “Browse” (or press the select key of the navigation key of mobile phone) to confirm it is ok to use network. Then enter the window for video browse. If it is successful to connect, the image can be seen a moment later, as shown in figure 2-11. If it is failed to connect, the system will give prompting message to the user.



Fig. 2-11 Window for video browse

2.5 Image Zoom

Select menu item “Zoom in” to enlarge the current image, as shown in figure 2-12. Click “Zoom out” to reduce the image to original size.



Fig. 2-12 Enlarged image

2.6 Stop Live View

Select the menu item “Stop browsing” in the figure 2-11 to stop browsing the video and return to the channel. The user can select other channels to continue browsing video. Moreover, the system has memorized the last channel selected by the user, so it will jump to the last channel after stopping video browse and returning to channel list.

2.7 Language Switch

Click the menu “Menu” in the main interface and select “Language”, and then the dialog box for language selection will pop up, as shown in figure 2-13:



Fig. 2-13 Dialog box for language selection

Press the up and down soft keys on the keyboard of mobile phone to select the language and then click the button “OK” to complete. At present, this software can support two languages: Chinese and English.

2.8 Logout/Quit System

Select the menu item “Logout” in the channel list interface. It will return to the device list. Then the user can select other devices to login or select the menu item “Quit” to quit the system.