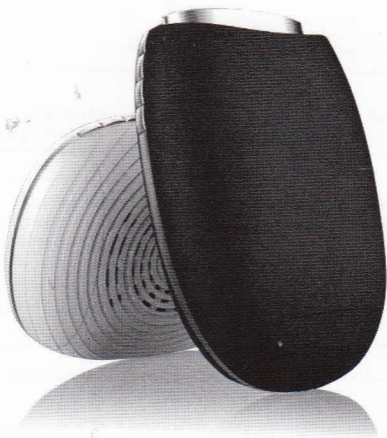


PEBBLE WIRELESS HD PROJECTOR

user manual



Note

Before operating the unit, please read this manual thoroughly and retain it for future reference



Note: Even in the absence of comment, company trademarks and products trademarks of their respective companies get stern treatment.

Caution about safety in use

Note

Thank you for purchasing this series of digital projectors.

Please read through the "manual" in order to properly use the product.

After reading the manual, please keep it in a safe place for future reference.

WARNING

To reduce the risk of fire or electric shock, do not open the cabinet. Refer servicing to qualified personnel only.



The mark warns that the unit is with insulated voltage, the surface magnetic field may cause an electric shock; therefore, touching any parts inside the unit is very dangerous.



The mark reminds the user when operating and maintenance must be very careful, therefore, must read carefully in order to prevent making fault.

WARNING

To reduce the risk of fire or electric shock, do not expose this apparatus to rain or moisture, do not open the cabinet.

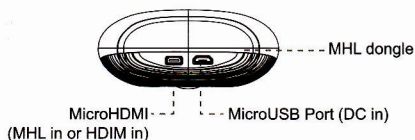
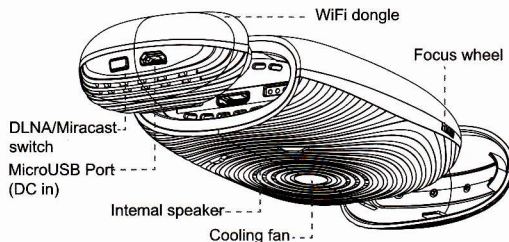
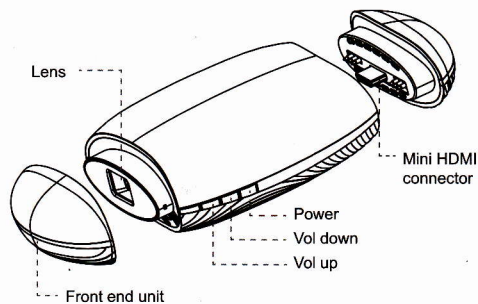
Introduction

Pebble wireless HD projector integrated DLNA, miracast, airplay, MHL, HDMI, strive to build a smart phone, tablet entertainment and business partner. DLNA enables Android Smartphone or tablet itself or through third-party software applications to push music, video, pictures located in the device displayed by Pebble wireless HD projector. Equipment can push music, video, pictures easily through airplay to the projector and share it. Through Miracast, devices with Android4.22 or above supports seamlessly displaying with Pebble wireless HD projector.

MHL, HDMI allows devices with MHL or HDMI output for easy connection via data cable to Pebble wireless HD projector and share the big screen.

Pebble wireless HD projector will lead you into an improvisational sharing mode of wireless HD connectivity.

Checking Overview

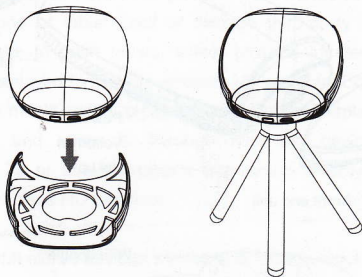


Quick setting up and debugging

Setting up and debugging

1 Setting up your projector

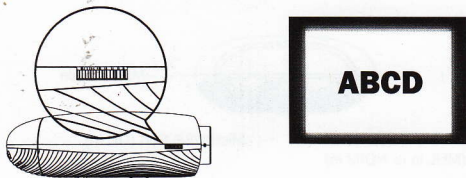
Tripod connecting



 Note Tripod included in standard accessories.

2 Focus adjusting

Adjust focus by sliding the focus wheel on the right side of the body. Move the projector forward or backward if it is still not clear.

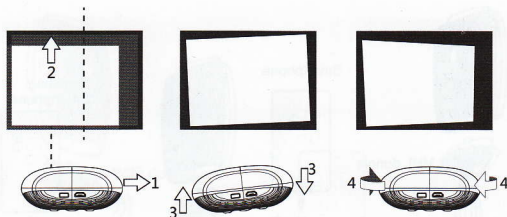


Quick setting up and debugging

Setting up and debugging

3 Adjusting projected images

Checking horizontal or vertical setting of screen

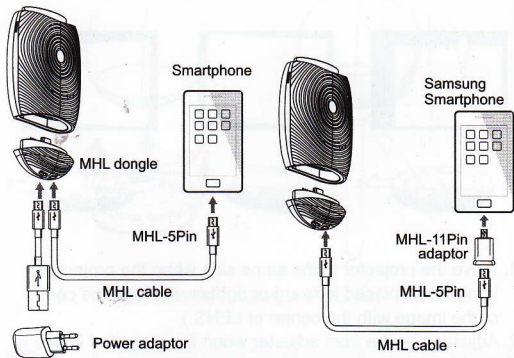


1. Move the projector to the same side when the projected image is displaced leftward or rightward. (Align the center of the image with the center of LENS.)
2. Adjusting by the front adjuster when the projected image is displaced vertically.
3. Place the projector horizontally when the projected image is offset.
4. As shown above, align the position of projector with screen when it was not.

Connecting to devices

1 MHL dongle connecting

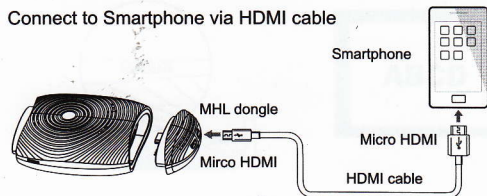
Connect to Smartphone or Samsung Smartphone via MHL cable



Note

HDMI cable is NOT included in accessories. The projector support device with MHL/HDMI out function only.

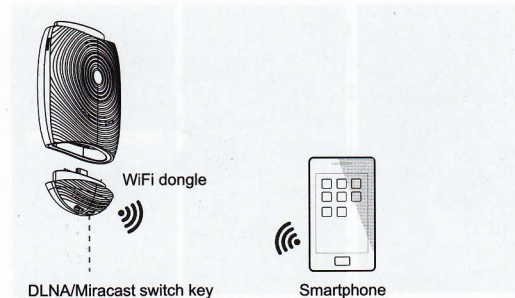
Connect to Smartphone via HDMI cable



Connecting to devices

2 WiFi dongle connecting

Connect to Smartphone via WiFi



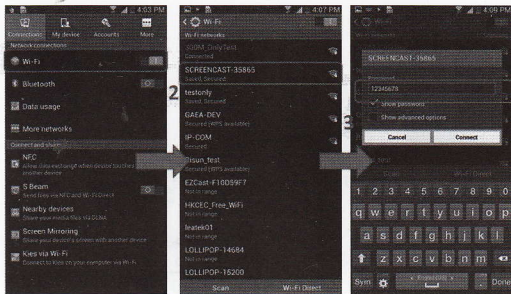
Note

Connecting to the projector, Smartphone must support DLNA or Miracast.

Setting

Router Setting

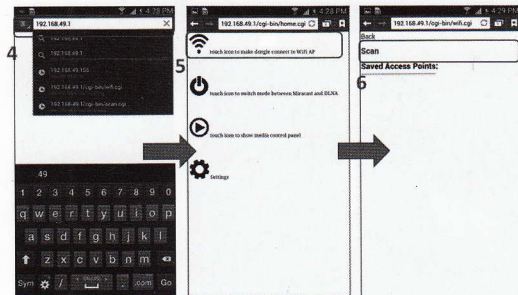
1. Clicking Settings → WIFI → SCREENCAST-xxxxx on your phone or tablet , type in Default Passwords "12345678".



Setting

Router Setting

2. After Success connected, Open the browser and type in "http://192.168.49.1" .



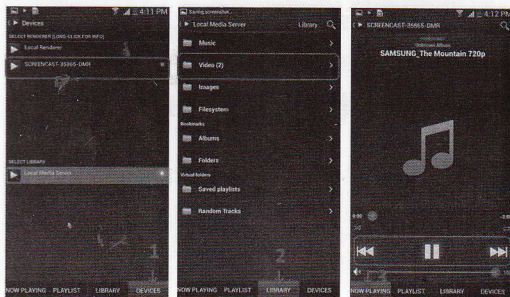
3. Click the icon. 
4. Click "Scan" to scan the Wireless Router, choose the AP Enter Password.

DLNA Usage

1. DLNA Local Sharing

Running the APP (example: "Bubble UPnP", download from Google Play store) which used for DLNA sharing:

- (1) Select the SCREENCAST-xxxxx in the "DEVICES".
- (2) Select the video, picture, music in the "PLAYLIST" or "LIBRARY", the media will play on the TV.



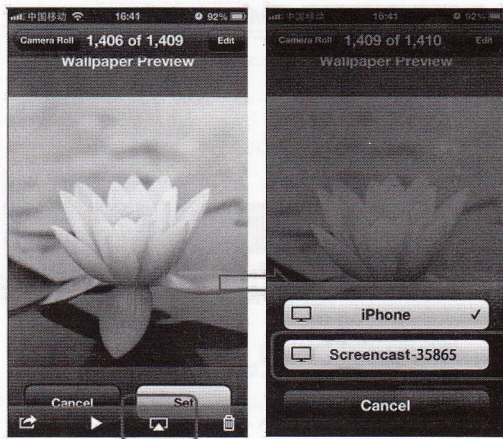
2. DLNA Internet Sharing

Download the Online Video App from Google Play Store, Which support the DLNA share. The icon of DLNA will appear when you watch the Online Video, then click it and choose the devices "SCREENCAST-xxxxx" for sharing on TV.




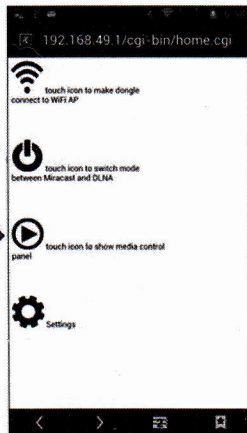
AirPlay Usage

1. Connect IOS to "SCREENCAST-xxxxx". Browsing the local video/music/picture, click the icon of airplay then choose the devices "SCREENCAST-xxxxx" for sharing on TV.



Mode Switch DLNA and Miracast

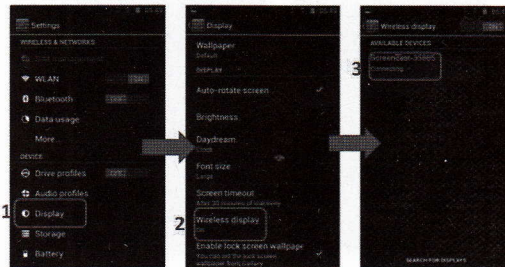
1. Manually switch
Poke the port in the Front of screencast.
2. Web switch :
Open browser and type in "http://192.168.49.1"
Click the icon of Mode Switch  in the Web.
3. key switch :



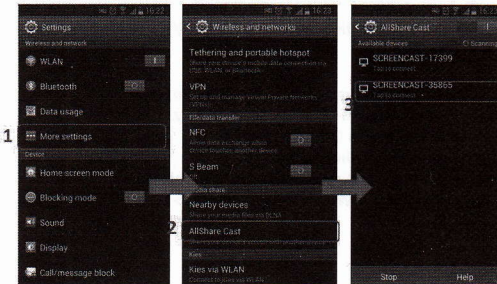
Click to switch the
Miracast Mode

Miracast Usage

1. Connect setting (WiFi Display)
Click Settings → Display → Wireless Display → SCREENCAST-xxxxx After connect successfully, the screen of the device can share on TV screen real-timely.



2. Connecting setting (Screen Mirroring)
Click Settings → More Settings → AllShare Cast → SCREENCAST-xxxxx



Miracast Usage

- 3 SAMSUNG Device Connect Setting (Screen Mirroring)
 Click Setting → Connect And Share → Screen Mirroring
 → SCREENCAST-xxxxx



NOTE:

Various devices has different name and way to set Miracast, below for reference:

- LG Optimus G: Setting->More Setting-> Miracast.
- Sony: Setting->Xperia->Screen sync display.
- HTC: Setting->Media Output.
- Sharp: Settings -> Wireless Output.
- Nexus4: Settings-> Display -> Wireless display.
- XiaoMi2: Settings-> Wlan display settings->Menu-> Wlan Display .

Miracast Trouble shooting

Q : The screen is black.

A : Please confirm follow steps :

- (1) Please check the LED? If not blue, make sure the Micro USB cable be fully connected to the power source.
- (2) Make sure the HDMI cable is securely connected firmly.
- (3) Make sure the correct HDMI port input is selected by the TV.

Q : Can' t find device In the Miracast Mode.

A : Please make sure Screencast has been switch to the Miracast mode.

Q : Does not scan the device in the DLNA mode ?

A : Please make sure the wireless connect between your phone or tablet and Screencast.

Q : Play the Video not very smoothly in the DLNA mode.

- A : (1) Please wait for a moment due to huge file need time to buffer.
 (2) Short distance between the device and the router.

Q : Play video suddenly stop in the Miracast mode.

A : Short distance between the device and the router.

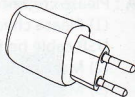
Packing list



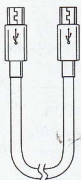
Projector



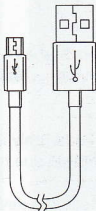
MHL dongle



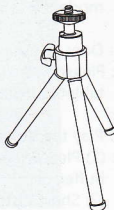
Power adaptor



MHL cable



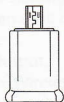
AC cable



Tripod



Stand



MHL adaptor