

Important Safety Instructions.

Please read all of the safety and operating instructions before using the product.

Precautions on Power

- Do not plug too many devices into a socket. It may cause an overload and result in a electric shock or fire.
- Do not touch the plug with wet hands. It may cause an electric shock or fire.
- Do not place heavy objects on the power cable or bend it severely. It may cause a fire.

Installation Precautions

- Do not install around any heat sources such as radiators, heat registers, or cooking appliances. Keep the product out of direct sunlight and locate well ventilated place.
- Keep the product away from moisture and dust as they may cause an electric shock and fire.
- Do not place any magnetic objects around the product. It may damage the data in your HDD. We will not be liable in any way for damages as a consequence of loss or recovery of information in the HDD.
- Do not drop the product cause it to be subject to severe impact on it. It can cause the product to malfunction.
- After making sure the product and TV are powered off, connect the power and A/V cables.

Usage Precautions

- We are not be liable for any personal or confidential information stored in the HDD if it is damaged by strong impact or abuse. Customers should back up their data before returning the unit for repair.
- Do not cause any strong impact to the product. The HDD or the product itself can be damage and malfunction.
- Do not connect the cables when the product is on.

Precautions on HDD

- Customers need to format the HDD and create partition when you use a new HDD for the first time. No HDD jumper setting is required.
- When detaching a HDD which has recently been used, please wait for the unit to cool. The heat of the HDD can result in burn.
- Customers need to format the HDD and create a partition when they use a new HDD for the

first time. There are two kinds of file systems(FAT32 and NTFS) and customers must choose one of them before formatting.

If FAT is selected, please maximize the size of the cluster.

If you want to manage (copy & record) an file whose size is more than 4GB, please use the NTFS file system because FAT32 is limited to a 4GB file size.

Precaution on Disassembling

- Please disassemble the product after turning if off. Do not disassemble the product while the power is on, it can cause an electric shock or burn.
- Please read this manual before disassembling.
- Do not alter the product. It can cause a fire and will void the warrantee.
- When detaching the HDD, please wait until the unit cools. A hot HDD can cause a serious burn.

Remote Control Precautions

- Please point the remote controller towards the infrared receiver on the product, otherwise it may not work properly.
- Please store the remote control properly. If it is lost, please contact our customer service department for a replacement. Most of the product's functionsw are only accessible via the remote control.

Maintaining the Product

- Never clean the product with furniture wax, benzene or other volatile liquids since they may corrode the cabinet.
- Please clean the product with dry & soft cloth after unplugging the power cord.
- Do not turn off the product while upgrading firmware(F/W). It may cause any malfunction.
- User can adjust the speed of cooling fan(low, normal, Turn off). You can set the fan speed low or turn it off when the noise of fan is annoying. But it can heat up the player and may cause malfunction. We highly recommend setting the fan speed as normal always especially in summer or in a car.

Before you start

The product does not include a HDD. The HDD must be purchased and installed separately.

**Product****Remote Controller(and battery)****A/V Cable****USB Cable****Power Cord****Power Adapter****User Manual**

The product was registered and passed the electromagnetic wave test for home use.

Table of Contents

1. Introduction	
1.1 iTAB-36HD (Digital Multimedia Player)	6
1.2 Specification	7
1.3 Name of Each Part	8
1.4 Part Names (Remote Control)	9
1.4.1 Before using the Remote Control	9
2. Installation and Connection	
2.1 HDD Installation	12
2.2 PC Connection	13
2.2.1 Connecting to PC(Windows XP)	13
2.3 Partition and Format in Windows 2000/XP.	14
2.4 Connecting and Disconnecting to a PC	17
2.5 TV Connection	18
2.5.1 Connecting the Audio/Video Cables	18
2.5.2 Composite Cable Connection	18
2.5.3 S-VHS Cable Connection	19
2.5.4 Component Cable Connection	19
2.5.5 HDMI Cable Connection	20
2.6 Digital Audio – Cable Connection	21
2.6.1 Connection to a 5.1 CH receiver	21
2.7 LAN Connection	21
2.7.1 LAN Connection to a PC	21
2.7.2 Connection via the Internet IP Router or Hub.	22
2.7.3 USB Wireless LAN Connection	22
2.8 Connecting to other Terminals	24
3. Setup Menu Setting	
3.1 'SETUP' menu	25
3.1.1 Go to the 'SETUP' menu	25
3.1.2 SETUP Menu Map	26
3.1.3 A/V Menu	28
-TV Mode	28
-Screen	28
-4:3 Letter box	28
-4:3 Pan & Scan	29
-16:9 Letter Box/Pan & Scan	29
-Analog TV Out	29

-Digital TV Out	30
-Audio Mode	30
-DVD Rating Setting	31
3.1.4 LAN Menu	32
-Server IP	32
-IP Setup	32
-MAC Address Check	33
-LAN Type	33
3.1.5 ETC1 Menu	34
-Skip Interval	34
-Slideshow Interval	35
-DVD/CD Autorun setup	36
3.1.5 ETC2 Menu	36
-Language Setting	36
-LCD Color Setting	37
-Screen Saver Setting	37
-Current Time Setting	38
-Firmware Upgrade	38
4. Active Usage of the iTAB-36HD	
4.1 Active usage of the data in HDD.	39
4.1.1 Video File Playback	39
4.2 Active Usage of the DVD drive	45
4.2.1 DVD Title Playback	45
4.2.2 Video CD Playback	46
4.2.3 Audio CD Playback	46
4.3 Audio File Playback	46
4.4 Photo File Playback	48
4.5 DVD file Ripping	50
4.6 Playlist	51
4.7 Photo Slide Show	53
4.8 Using a USB Host	54
4.6 Using a Network	55
4.7 Using wireless Network	61
4.8 DVD Backup	63
4.9 Audio CD MP3 Ripping	64
5. Additional Information	
5.1 Q&A	67

1. Introduction

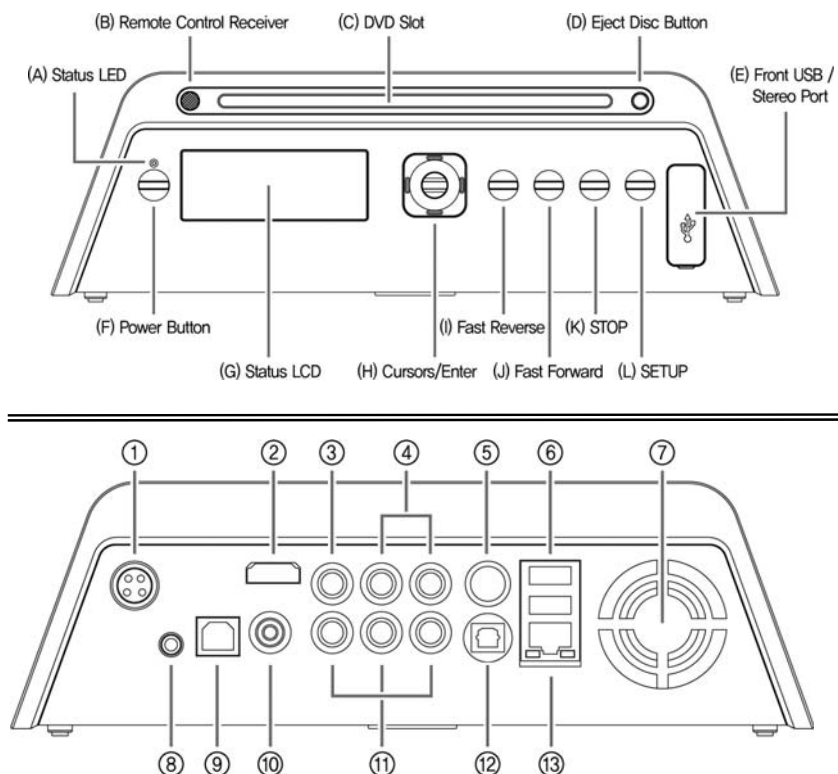
1.1 iTAB-36HD (Digital Multimedia Player)

1. The iTAB-36HD is a state-of-the-art digital multimedia player which plays back not only HD (1920x1080i) movies, pictures, music, but also DVDs and Audio CDs.
2. Sigma design 8621 chipset is installed. The iTAB-36HD supports the latest codecs and plays back AVI, Xvid, MPG file as well as WMV9 and TP.
3. The iTAB-36HD supports and plays digital audio files such as MP3, OGG, WMA, WAV, AAC and AC3.
4. The iTAB-36HD supports high definition(80 million pixel) JPEG photo files and slide show function.
5. The iTAB-36HD plays back the media files from the PC which is connected by (wire/wireless) network. You can play the file via network without any special and additional program.
6. The iTAB-36HD plays back the media files in extension HDD, memory card reader, digital camera. USB memory.
7. The iTAB-36HD plays back DVD, VCD, Audio-CD and CD via the installed DVD ROM.
8. Supports DTS down mixing function and plays back DTS sound into two channels.
9. Users can enjoy the original DTS sound (High sound quality of multi channels) through an external DTS decoder.
10. The iTAB-36HD supports HDMI 1.1 format for high definition Audio/Video. HDMI deliver uncompressed digital video up to 1080p as well as multi-channel digital audio.
11. Supports file copy and delete via LAN and USB by remote control.
12. Supports the backup and playback of authentic DVD titles.
13. Supports MP3 ripping of authentic Audio CDs.
14. Shows information via the front LCD display and the background color can be changed in the setup.
15. Supports the size/location/color change of subtitle.
16. Supports the perfect file system.
17. Supports the colored 'smi' subtitled files.
18. Supports the rapid reaction of remote control and prompt folder switchover.
19. Supports DVD juke box via ISO, IFO.
20. Supports network playback (10/100 LAN)
21. Supports continuous F/W upgrades for the stable and convenient usage.

1.2 Specification

LCD Display	Playback mode, playback time, video out, audio format, playback title.	
Video	formate	mpg, ifo, vob, tp, ts, mp4, avi, asf, wmv
	codec	MPEG 1/2/4, DivX, XVID, WMV9
	resolution	1920 x 1080i
Audio	codec	MP3, WMA, AAC, Ogg, PCM, AC3, WAV
	lyric	lrc(lyric file)
	DTS	2-channel Down mixing , Digital Pass through
Photo	JPEG	
Connection	USB	USB 2.0 Host (3EA)
		USB 2.0 Slaver (1EA)
Expension	LAN	Ethernet 10/100Mbps (1EA)
		WiFi (USB) dongle. Supports Ralink chipset (optional)
Audio Input	Stereo	Stereo out (Head-set)
Video Out	HDMI (1080p) Composite, S-Video, Component (1080i)	
Audio Out	Digital	Coaxial, Optical
	Analog	2-channel Stereo(RCA, 3.5⌀ stereo)
ODD	DVD ROM (DVD, SVCD, VCD, Audio CD, Data CD)	
Support subtitle	smi, smil, srt	
Cooling Fan	Speed control and off function	
power	12/5V DC adapter	
Size(Weight)	W234 x H73 x D714 (930g)	

1.3 Name of Each Part



- ① Power (connect to power adapter)
- ② HDMI Output
- ③ Composite Output
- ④ Audio Output(stereo)
- ⑤ S-VIDEO Output
- ⑥ USB-M (Host)
- ⑦ Cooling fan
- ⑧ Extension IR Receiver (option)
- ⑨ USB-S (Slave)
- ⑩ S/PDIF (Coaxal)
- ⑪ Component Output (YPbPr)
- ⑫ S/PDIF (Optical)
- ⑬ LAN (wireless LAN is option)

1.4 Part Names (Remote Control)

1.4.1 Before using the Remote Control

- Open the battery cover.
- Insert two AAA batteries into the battery compartment following the indications (+,-) inside the compartment. Close the battery cover.

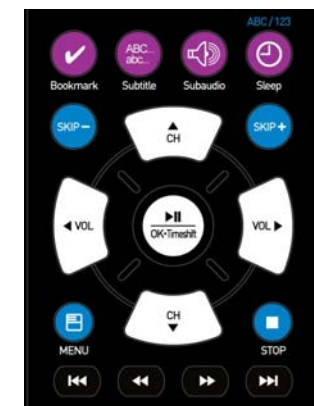


Button Names

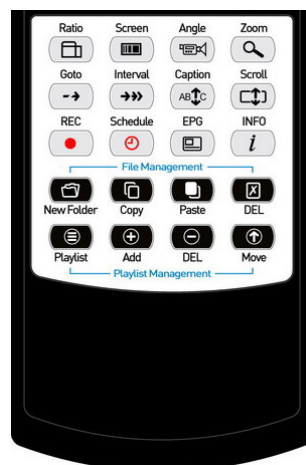
1. Power button
Turn on/off the iTAB-36HD
2. Mute button
Mute on/off in media playback.
3. TV button
Start HDTV(Optional)
4. Setup button
move to setup menu
5. TV-out button
Change the Video Out mode
(NTSC Video – PAL Video –
NTSC Component – PAL Component – NTSC HDMI – PAL HDMI)
6. Eject button
Eject DVD/CD
7. Numeric Buttons
English/Number input function in folder creation.
8. – button
In Photo playback, start/stop photo slideshow.
In Audio playback(Play – File Repeat – Folder Repeat – Shuffle)
9. Back button
Delete the previous letter in folder name creation.



10. Bookmark button
Bookmark in media file playback. Start from the bookmark position.
11. Subtitle button
Start/Stop the subtitle function during movie(file/DVD) playback. Or change subtitles if the file supports multiple subtitles.
12. Subaudio button
Start/Stop Audio functions during movie playback or change sound if the file supports multiple sounds.
13. Sleep button
Set up the sleep time (120–90–60–30–Off)
14. SKIP –/+ button
Skip the frame in certain interval during playback.
15. CH ▲/▼ button
Move Up/Down in List and Menu
16. ◀/▶ button
Move Left/Right in List and Menu
17. OK button
File Play/Pause/Select function
18. MENU button
Go to Main Menu
19. STOP button
Stop playback/Go back to the Initial stage in current Menu
20. I◀◀ button
Play previous file or play the previous chapter in DVD
21. ▶▶I button
Play next file and or play the previous chapter in DVD
22. ◀◀ button
Rewind the media file
23. ▶▶ button
Fast Forward the media file



24. Ratio button
Change the ration of media file
25. Screen button
Setup Screen Brightness, Darkness and Color Depth
26. Angle button
Rotate photo 90 degrees clockwise and angle change in DVD playback
27. Zoom button
Go to Zoom mode. Press 'Stop' and go back the standard screen.
28. Goto button
Start playback from the position you want
29. Interval button
Change SKIP interval
30. Caption button
Adjust and select location/size/color of subtitle
31. Scroll button
Scroll(Re-position) function on or off
32. REC / Schedule / EPG button
In case HDTV module installed (Option)
(Record/Scheduled Record/Program Guide)
33. INFO button
Show various information of the media file which being displayed
34. New Folder button
Make New Folder by using English/Number combination of numeric buttons.
Change the mode (a capital letter(ENG), a small letter(ENG), Number) by pressing <Sleep> button.
35. Copy button
Copy the selected file
36. Paste button
Paste the copied file in current folder
37. DEL button
Delete folder or file
38. Playlist button
Switch Playlist mode and Normal mode
39. Add button
Add new file in Playlist
40. DEL button
Delete the selected file in Playlist
41. Move button
Move the file location in Playlist



2. Installation and Connection

2.1 HDD Installation

The product does not include a HDD.

1. Unscrew the 2 bolts from the bottom of the product.



2. Open the HDD cover.



3. Gently take out the data(SATA) & power connector and connect them with the HDD. After they are connected, slide the HDD into the center of the bracket.



4. Close the HDD cover and screw it tightly
(use the shock resistant stickers (twofold) if a slim size HDD is used)
5. Format the HDD after connecting the unit to a PC.

2.2 PC Connection

2.2.1 Connecting to PC(Windows XP)

The user needs to format and create a partition when you use a new HDD for the first time. This product recognizes the FAT32 and NTFS file systems.

Please refer to Table 2,3 for more information on HDD partitioning and formatting. (You can also get more information from the product homepage)
a PC with Windows Me or higher OS does not require a driver.

For Windows 98/ME, you must download the latest driver from our website and install it.

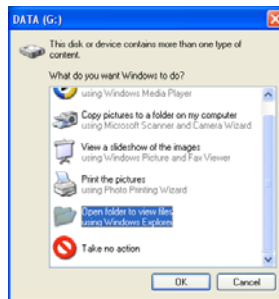
1. Please use the USB cable included with the product. The USB cable has a different shape on both ends. One side is USB 2.0 "A" plug type and the other is "B" plug(male) type.
2. To use the iTAB-36HD as portable storage, the power should be connected prior to use.

The following steps are for PCs with Windows XP

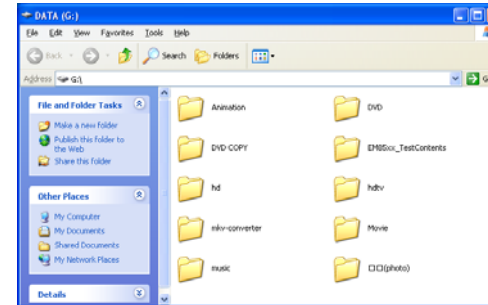
1. Connect to a PC and turn the power on via the power button on the remote control or on the front of iTAB-36HD



2. "New device detected" will appear and the local disk(driver:) window will follow..
3. Choose "Browse Files" then Click <OK>



4. The folders in the HDD will be shown

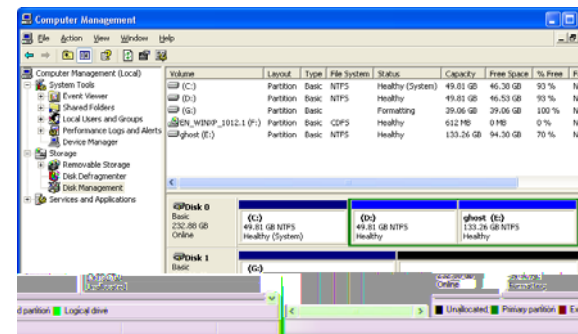


Caution

1. Windows 98/SE/Me cannot recognize the HDD if it is formatted with NTFS. The HDD should be formatted with FAT32 under Windows 98/SE/Me
2. When making a partition with FAT32 under Windows 2000/XP, the maximum size of each partition is 32GB.
3. In the NTFS file system is used the product can recognize files that are over 4GB.

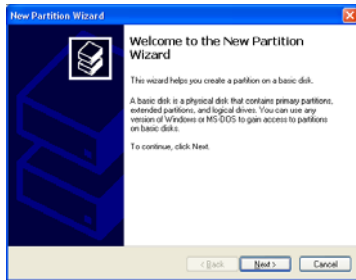
2.3 Partition and Format in Windows 2000/XP.

1. Connect the iTAB-36HD with PC using the included USB cable. The iTAB-36HD is recognized as a portable storage device.
2. Under Windows 2000, you can make a partition and format the HDD through the disk manager utility



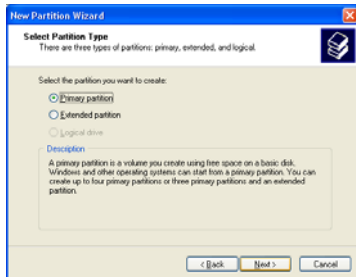
3. Right click on 'My Computer' -> Click 'Manager' -> the 'Computer Management' window will appear. -> Click 'Disk Management'

4. When the New partition Wizard appears, click 'Next'.



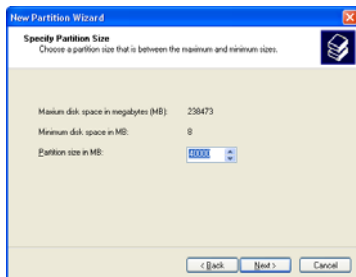
5. The iTAB-36HD can recognize the divided partitions (4EA) as well as the Folder (Directory).

6. Choose the partition type and format the HDD. If you want to make several partitions, select 'Extended partition'.



7. Select the partition size. If FAT 32 is used, the partition size is limited to 32GB or less.

The HDD capacity will show a lower figure than the original capacity due to the display by binary and decimal number.

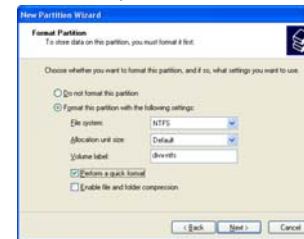


8. Assign the drive letter, and then click "Next"



9. Select the partition format (NTFS or FAT)

If you select 'Perform a quick format', after making a partition, the quick format will begin automatically.



10. When finished, the following message appears. Click "OK" to finish.



The iTAB-36HD supports both the NTFS and the FAT32 file system. The two systems are almost identical, but we recommend the NTFS file system because NTFS supports files which are larger than 4GB and is more stable. In your PC has its operating system in a FAT32 HDD, it will not support the NTFS file system.

For an older HDD or a HDD used in other OS such as Linux, the iTAB-36HD may not recognize them. In this case, the user needs to delete and rearrange the partition, then reformat.

2.4 Connecting and Disconnecting to a PC

If you improperly disconnects the USB cable from PC, it can damage data and/or an abnormal copy. To prevent these sorts of problems, please read the following precautions.

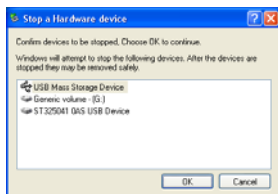
1. Double click the icon "Unplug or Eject Hardware on the Windows tray (Right bottom)



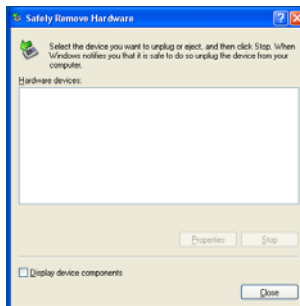
2. When the 'Unplug or Eject Hardware' window appears, click "Stop"



3. Click 'OK'



4. Click 'OK' and disconnect the USB cable from the PC.



2.5 TV Connection

2.5.1 Connecting the Audio/Video Cables

The iTAB-36HD supports four different types of video output(Component, HDMI, SVHS, CVBS). You can choose and connect the appropriate cable according to your available TV input terminals.

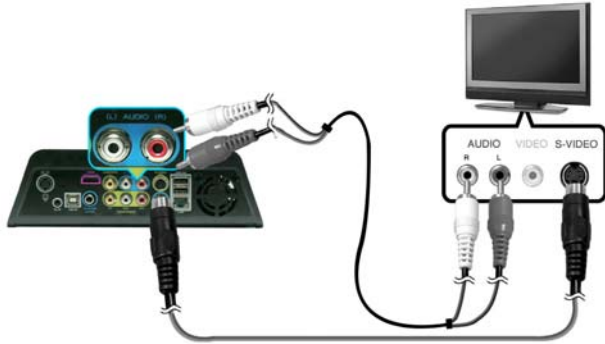
2.5.2 Composite Cable Connection

- Connect the iTAB-36HD and your TV using a composite video cable(Yellow).
- Turn on the iTAB-36HD and TV. Select 'composite' as the video input on your TV.
- Press the 'TV-OUT' button on the iTAB-36HD Remote Control and adjust the display mode to 'VIDEO' on the front LCD display.



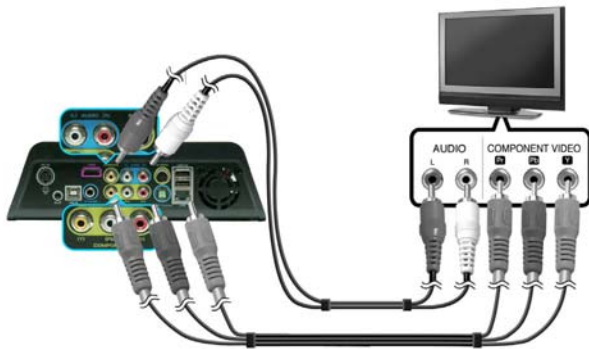
2.5.3 S-VHS Cable Connection (Optional)

- Connect the iTAB-36HD and your TV using a four pin S-Video Cable.
- Turn on the iTAB-36HD and your TV. Select 'composite' as the video input on your TV display. (The S-Video cable is not included in iTAB-36HD package. It should be purchased optionally.) In case Audio, you need to connect Audio Cable separately.
- Press the 'TV-OUT' button on the iTAB-36HD Remote Control and adjust the display mode to 'VIDEO' on the front LCD display.



2.5.4 Component Cable Connection (Optional)

- Connect the iTAB-36HD to your TV using a component video cable (YPbPr - green, blue, red)
- Turn on the iTAB-36HD and your TV. Select 'component' as the video input on your TV.
- Press the 'TV-OUT' button on iTAB-36HD Remote Control and adjust the display mode to be 'Component' on the front LCD display. You can choose and select the correct display resolution(1080i, 720P, 480P) in AV setting of the iTAB-36HD according to your TV's specifications.



2.5.5 HDMI Cable Connection (Optional)

1. Connect the iTAB-36HD and your TV using an HDMI Video/Audio cable. If your TV does not have an HDMI input port, send the digital signal to the TV via the cable(HDMI to DVI)
- 2 Turn on the iTAB-36HD and your TV.
3. Select 'HDMI' as video input on your TV.

Press the 'TV-OUT' button on the iTAB-36HD Remote Control and adjust the display mode to be 'HDMI' on the front LCD display.

You can select the correct display resolution(1080P, 1080i, 720P, 480P) in the AV setting of the iTAB-36HD according to the specification of your TV.



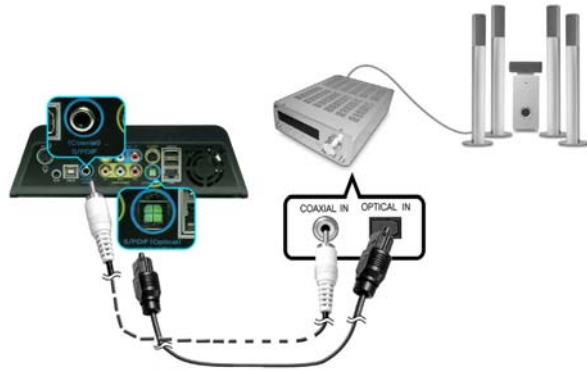
- Change the TV output mode via <TV-OUT> on the iTAB-36HD Remote Control.
- If there's no display after connecting the video cable, please press the <TV-OUT> button until you see the display. The TV Out mode is changed according to the sequence below.
Composite(NTSC) ▶ Composite(PAL) ▶ Component(NTSC 480P) ▶Component(PAL 576P) ▶ HDMI (NTSC 480P) ▶ HDMI (PAL 576P))
- The component mode which is set with the <TV-OUT> on the remote control is 480i. If you want to change it into 480p, 720p or 1080i, please choose and select it in the 'SETUP' menu of the iTAB-36HD ('AV Analogue - TV output)
- The HDMI mode which is set with the <TV-OUT> on the remote control is 480P. If you want to change it into 720p or 1080i or 1080P, please choose and select it in 'SETUP' menu of the iTAB-36HD ('AV Analogue - TV output)

2.6 Digital Audio - Cable Connection

2.6.1 Connection to a 5.1 CH receiver

If you use the iTAB-36HD with a multi-channel decoder/amplifier with optical/coaxial input, you can enjoy 5.1channel high quality sound.

(Optical/Coaxial cables are not included. They should be purchased separately.)



If there is no sound after connection the optical cable, you have to change the A/V setup into Digital via the SETUP menu.

2.7 LAN Connection

2.7.1 LAN Connection to a PC

Connect a LAN cable directly to the LAN ports of the iTAB-36HD and a PC.



>In case iTAB-36HD to PC direct connection, LAN cable should be cross cable type. The LAN card in PC is connected with Internet line, user need to install additional LAN card to connect to iTAB-36HD.

> LAN connection is recognized only when the power is on.

2.7.2 Connection via the Internet IP Router or Hub.

Connect the LAN port of the IP Router or Hub to the LAN port of iTAB-36HD by using a direct type LAN cable.



The LAN cable for a direct connection between a PC and a Hub is a direct type cable. After connecting to the LAN, please set your Windows Network settings as indicated below.

To use a PC network, you have to meet following two basic requirements. Please refer to '5.1 Q&A' for more detailed information.

1. Set your PC's folder sharing and authority
2. The same IP address must be used for both devices.

2.7.3 USB Wireless LAN Connection

You can use a wireless connection between the PC and the iTAB-36HD. The iTAB-36HD can support an optional wireless LAN card. Wireless LAN card is option. It should be purchased seperately.

The iTAB-36HD can support USB wireless LAN cards which use the Ralink Chipset.

1. Install the wireless LAN card to the USB host(front or rear) port on the iTAB-36HD.



If you install a USB wireless LAN card when the iTAB-36HD is on, it may not recognize it. Install it when the iTAB-36HD is off.

2. Turn on the iTAB-36HD
3. Press the SETUP button and go to the SETUP menu.
4. Press the SETUP button and go to SETUP menu.
(Please refer to '3. LAN setting menu' for the details on the setting procedure.)
5. Select wireless LAN in "LAN Type"
6. Select the appropriate AP



2.8 Connecting to other Terminals

Ext. IR cable connection

An external Infrared receiver for car can make it easier to use iTAB-36HD outside.

What is an external Infrared(IR) receiver?

While using this product outside, the use of the included remote control might be inconvenient. The external Infrared receiver adjusts the extents and angle of IR signal reception.



3. Setup Menu Setting

3.1 'SETUP' menu

'SETUP' menu: Manage Audio/Video options, language selection, skip and slide show interval setup, server IP setup, LAN information, F/W upgrade

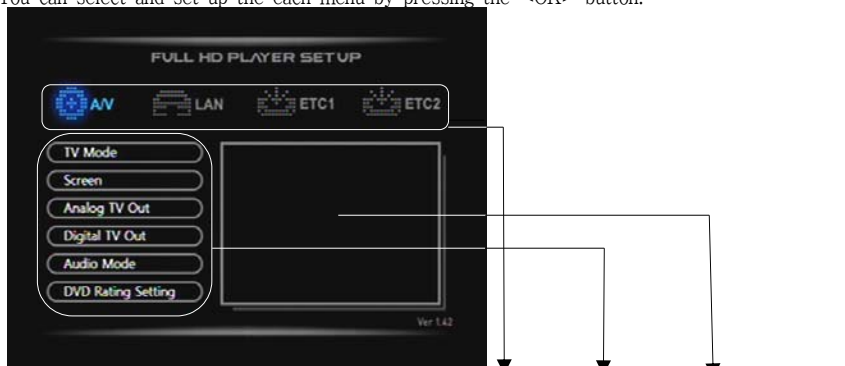
3.1.1 Go to the 'SETUP' menu

1. Please connect the power cable of iTAB-36HD and then connect it to the TV.
2. Press the "Power" button on the front panel of the iTAB-36HD or on the included remote control.
3. The iTAB-36HD's main Menu will be displayed.



4. Press the <SETUP> Button on the remote control or move to the SETUP icon on the main menu via once of the four arrow keys on the remote control and press <OK> to enter <SETUP>.

You can select and set up the each menu by pressing the <OK> button.



5. 'FULL HD PLAYER SETUP' is composed of the Main Menu>Sub Menu>Item Select a menu by pressing one of the four way arrow buttons <Up/Down/Left/Right>. Please press <SETUP> to save the setup.

3.1.2 SETUP Menu Map

'FULL HD PLAYER SET UP' Manu is mainly composed of A/V, LAN, ETC.

Main Menu	Sub Menu	Clause
A/V	TV MODE	NTSC
		PAL
	SCREEN	4:3 Letter Box
		4:3 Pan & Scan
		16:9 Letter Box
		16:9 Pan & Scan
	Analog TV Out	Video
		Component 480i
		Component 480p
		Component 720p
		Component 1080i
	Digital TV Out	HDMI AUTO
		HDMI 480p
		HDMI 720P
		HDMI 1080i
		HDMI 1080P
	Audio Mode	AC3 (Digital/Analog)
		DTS (Digital/Analog)
WMA (Digital/Analog)		
MP3 (Digital/Analog)		
AAC (Digital/Analog)		
HDMI Audio Out (OFF/ON)		
DVD Rating Setting	DVD Rating Setting, Password Setting	
LAN	Server IP	PC IP setting (folder share)
	IP Setting	Automatic / Manural Setting
	MAC Address Check	iTAB MAC Address
	LAN Type	LAN WIRELESS LAN
ETC1	Skip Interval	1 min, 3 min, 5 min, 10 min

	Slideshow Interval	3 sec, 5 sec, 10 sec, (custom setting) sec
	Speed Fan	Low, Normal, Off
	DVD/CD Autorun Setup	On, Off
ETC2	Language	English, Korean
	LCD color	White & Bluish green, White & Yellowish green Black & Sky blue, White & Red White & Violet, LCD Off
	Screen Saver	OFF, 5 min, 10 min, (custom setting)min
	Current time setting	Set the time and date
	Firmware Upgrade	Firmware Upgrade Initialization

3.1.3 A/V Menu

TV Mode

TV broadcast type: NTSC is used in North America and Asia and PAL is primarily used in Europe. Set up the TV type first and select the each detail setup according to the connection type(composite, S-video, component, HDMI) with your TV.

Screen

Change the aspect ratio according to the type of TV connected. If your TV has a 4:3 ratio, select 4:3 letter box or 4:3 Pan & Scan. If your TV has a 16:9 wide ratio, then select 16:9 letter box or 16:9 Pan & Scan.



4:3 Letter box

4:3 Letter box shows 16:9 ratio movie files as it is without any ratio change.



4:3 Pan & Scan

4:3 Pan & Scan cuts both the left and right sides of 16:9 ratio movie files to fit into a 4:3 screen.



16:9 Letter Box/Pan & Scan

Shows the full screen display of not only the 16:9 ratio, but also 4:3 ratio movies files.



Analog TV Out

Set up composite and S-Video connections with 'VIDEO', in the component connection set up 'Component'. Choose the component resolution according to the resolution which your TV supports.



Digital TV Out

Setup the HDMI TV out resolution. Choose Auto/480p/720p/1080i/1080p according to the maximum resolution which your TV supports.

Auto is an Auto-EDID function which auto-runs at the optimum setting of TV. This does not mean that it is the highest resolution of the TV.



Audio Mode

The iTAB-36HD supports a variety of audio-out options via analogue(stereo), digital(SPDIF), HDMI(analogue/Digital).

- Digital: Connect a coaxial or optical cable and enjoy 5.1 channel DTS/Dolby digital sound through multi-channel receiver.
- Analogue: Connect to the TV with the audio cable(red, white) for two channel Audio out. iTAB-36HD supports two channel stereo down-mix for DTS audio.



- HDMI Audio out: Audio and Video out via one HDMI cable.
- If the audio cuts off select "Turn off HDMI Audio out" on the menu.

- Most digital TVs do not support DTS decoder. If you do not have a multi-channel receiver connected to your TV or iTAB-36HD, it may not support audio-out for DTS-coded media files.

DVD Rating Setting

The iTAB-36HD supports DVD rating setting(Parental Management Level).



- DVD Rating setting: There are six rating levels. Select the appropriate 'DVD Rating Setting'



When selecting the menu and rating setting, a window will pop up for a password. The default is '0000'.



To change the password, please click 'password setting' and change it according to following three steps. 'Current password > New Password> Input again'

3.1.4 LAN Menu

The iTAB-36HD has a LAN inside and can play back and copy files through network. You can install a wireless LAN(Optional) and do the same functions via a wireless network.



Server IP

The server IP is the IP address of the PC which has the shared folder.

(Ex: 192.168.0.yy). Use the Left/Right arrow buttons and input the IP via the numeric keys.



IP Setup

Users can set up the IP for the iTAB-36HD automatically or manually.

- automatical setting: It supports DCHP. When using a router or hub, it is a convenient way to assign the IP.

- Manual setting: Get the assigned IP address, Subnet mask and default gateway from the network manager and enter them manually.



MAC Address Check

It shows the MAC Address which iTAB-36HD's wired LAN has. Each device has different MAC address and it can manage the MAC addresses which are connected to IP router or hub.



LAN Type

This menu will only be displayed when a USB wireless LAN is installed on the iTAB-36HD. The iTAB-36HD does not support both wired and wireless LAN simultaneously. So, select LAN Type (LAN or Wireless LAN)

- LAN: LAN means the wired LAN installed in the iTAB-36HD.
- Wireless LAN: USB dongle type wireless LAN using the Ralink Chipset.



3.1.5 ETC1 Menu

For the stable and convenient usage of the iTAB-36HD, the ETC1 menu supports a variety of setup functions.



Skip Interval

While playing movies, skip the movie backward(SKIP-) or forward(SKIP +) by the desired time interval.

(Time Interval: 1 minute/3 minutes/5 minutes/10 minutes)

* By pressing the "Interval" button on the remote control, you can change the skip interval while playing a movie



Slideshow Interval

Set the JPEG file slide show time interval(5 seconds/ 7 seconds/ 9 seconds/ User Input). You can set up the time interval yourself. Move the cursor to space and press the <OK> button. Input the time by using the <Vol ▲/▼ > button.



FAN Speed

Control the fan speed(normal/slow/off) to manage the heat generated by HDD and other parts inside the PC.

About the cooling fan

You can adjust the speed of cooling fan(normal, slow, off). You can set the fan speed to slow or turn it off if the fan noise is annoying. But turning it can heat up the player and may cause malfunction. We highly recommend keeping the fan speed at normal always especially during the summer or while in a car.

DVD/CD Autorun setup

Setting the Auto-Run function.

The iTAB-36HD can play DVD title or Audio CDs automatically when they are inserted in the DVD ROM of iTAB-36HD.



3.1.6 ETC2 Menu

Support a variety of function settings such as Language, LCD Color, Screen saver and Time.



Language Setting

Set up the language. After selecting the language, press 'SETUP' to use the newly assigned language.



LCD Color Setting

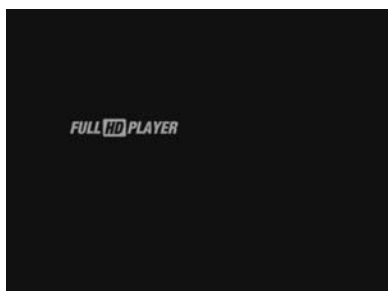
Change the front LCD color of the iTAB-36HD.

White letter with a blue green background/ White letters with yellow green background/ Black letter with sky blue background/ White letter with a red background/ White letter with a violet background/ LCD off



Screen Saver Setting

The iTAB-36HD supports screen saver function (OFF/ 5 minutes/10 minutes/User Input)



Current Time Setting

The iTAB-36HD supports an optional TV Tuner.



Firmware Upgrade

The iTAB-36HD can be upgraded via firmware to improve its performance. Upgrade the firmware upgrade or set up initialization (Factory Default) in this menu.

Firmware Upgrade

User can upgrade the firmware via USB, HDD or LAN.

(Upgrading the firmware via USB memory card)

1. Copy the latest firmware into the USB memory (*.bin file type)
2. Install the USB memory card on the USB host port of the iTAB-HD36.
3. Turn on the iTAB-H36. When the 'USB' icon on the Main menu will be activated, go to the 'SETUP' mode by pressing 'SETUP' icon or 'Setup' button on the remote control.



4. Move to 'ETC2' > Firmware Upgrade and start the upgrade.
5. Start the firmware upgrade by following the instructions in the pop up message. Do not turn off the power of the iTAB-36HD while upgrading. It can cause malfunction or damage on the product.

After finishing firmware upgrade, iTAB will restart automatically.

4. Active Usage of the iTAB-36HD

4.1 Active usage of the data in HDD.

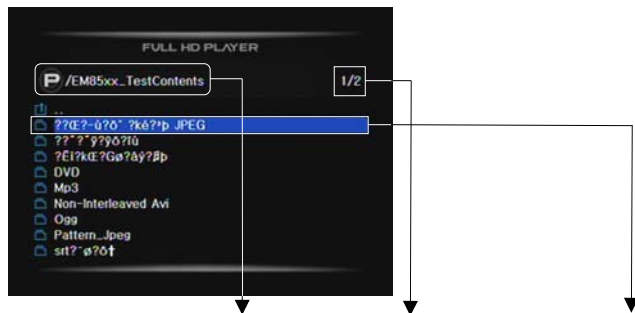
4.1.1 Video File Playback

The iTAB-36HD can play back the video files in HDD, DVD, CD and USB devices.

1. Select and click the device icon on the main menu which includes the video files you want to playback.



2. After moving the files, select the folder which includes the video file.



<1. Current folder name and location 2. Current page 3. Current cursor(remote control) location>

Use the SKIP-/+button on the remote to move the pages

3. Press the <OK> button to play the file. If you select subtitle the file which has the same name with the video file, the video file is played back.

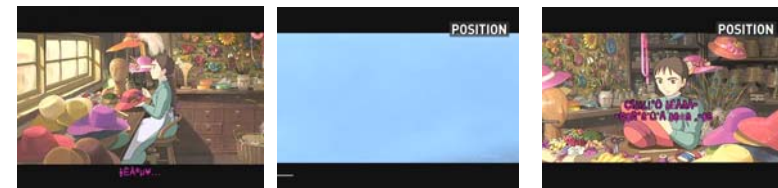


<1. Move to Upper folder 2. Video File 3. Subtitle File 4. Current Folder Name and Location>

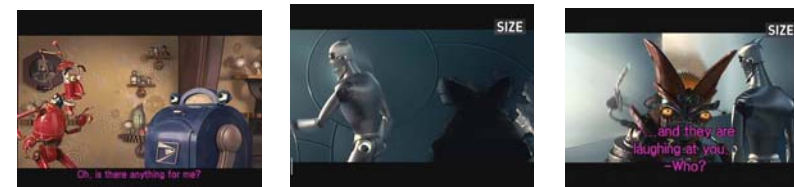
4. Subtitle setting: Control the subtitle by pressing <Caption> button on the remote control.

Change Position, Size and Color of Subtitle. If you press <STOP> button in each setting, it sets up the default.

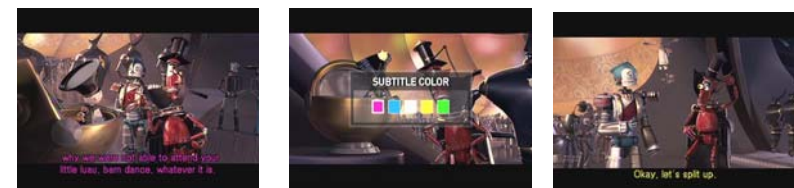
In 'POSITION' stage, move the location of subtitle by using <▲/▼> buttons.



<In 'SIZE' stage, change the size of subtitle by pressing <▲/▼> buttons.>



<In 'SUBTITLE COLOR' stage, change the color of subtitle by press <▲/▼> buttons.>



5. Subtitle View Setting.

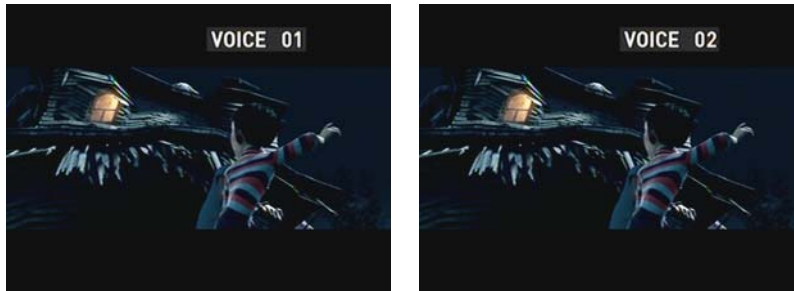
Select On or Off of the Subtitle View by pressing <Subtitle> button on the remote control.

* <SUBTITLE OFF – SUBTITLE ON – SUBTITLE xx(Multi-subtitle)>



5. Audio Setting: If the media file support multi channel sounds, you can select the proper setting by pressing <Subaudio> button on the remote control.

In case of media file without multi channel sound, this function doesn't work.



6. File Information

show the detail information of the current file in playback by pressing <INFO> button. To close the information window, press <INFO> button again.

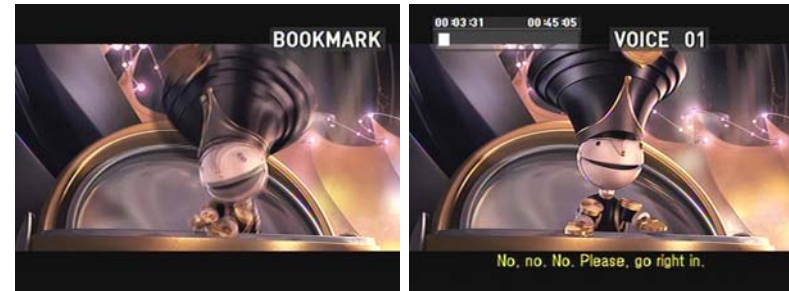


< File Name, Size, Playback time, Total time, Audio codec, Video codec, resolution, Subtitle>

7. Resume(Bookmark) function: Start the movie from the position you marked last time by pressing the <BOOKMARK> button on the remote control.

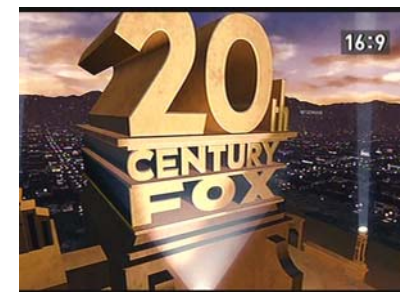
You can resume the position by pressing the <BOOKMARK> button on the remote control

when you restart the playback of the movie.



8. Playback Control: Control the location and speed of playback.

I◀◀	Start from the beginning
◀◀	Rewind function (2x<9x<32x)
▶▶	Fast Forward function (2x<8x<32x)
▶▶I	Next
▶II	Play/Pause
■	Stop the media file and go to the list window.



9. Aspect Ratio function: Adjust the display ratio of the media file(4:3, 16:9)



10. Color Changing Function: Change the brightness/Contrast/Color of the current media file by pressing the <Screen> button. Press the <Screen> button and move to the BRIGHT, CONTRAST or COLOR. In each stage, adjust the setting by pressing the <◀/▶> button on the remote control.

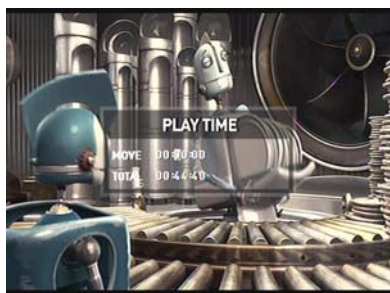
11. Zoom Function: Zoom IN or OUT of the current media file.

Press the <ZOOM> button and enter the ZOOM mode and then adjust it by pressing the <◀/▶> button and apply the setting by pressing the <OK> button on the remote control.



12. Time Searching(Goto) function: Move to the appointed time of the movie. Press the <Goto> button and set the time you want to start, then press the <OK> button on the remote.

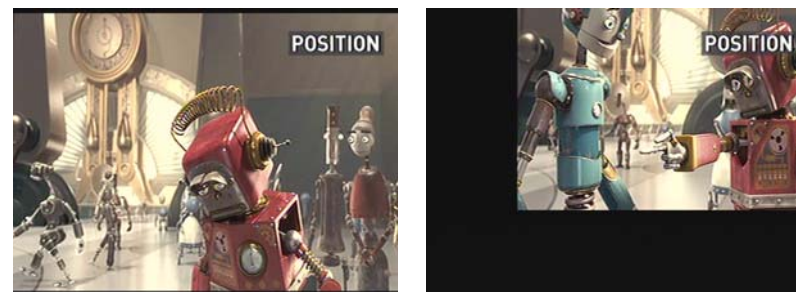
* Set the time by pressing the four arrow and numeric buttons.



13. Interval setting: Change the SKIP interval by pressing the <Interval> buttons to 1minute-3 minutes-5minutes-10minutes. It is a simple and instantaneous way to set up the SKIP interval without going to the SETUP mode.



14. Display Location: Move the display location of the file being played by pressing the <Scroll> and four arrow<◀/▶/▲/▼> buttons on the remote control.



15. Sleep Mode setting: Turn off the iTAB-36HD at the appointed time. Press the <Sleep> button to enter Sleep mode. Select the desired sleep time and press the <OK> button.



16. Sound Setting.

▶	Volume UP
◀	Volume DOWN
🔊	Mute On/Off

4.2 Active Usage of the DVD drive

4.2.1 DVD Title Playback

The iTAB-36HD can play playback of authentic DVD titles from any region.



1. After checking the connection between the iTAB-36HD and your TV, press the power button on the front panel of the iTAB-36HD.
2. Select the TV input mode.
3. After you see the main menu of the iTAB-36HD, insert the DVD.
(Make sure you insert the DVD title with the printed side up.)
4. When the DVD icon of Main Menu is activated, move to the DVD icon and press the <OK> button.
5. Start playback of the DVD title.
6. Press the <EJECT> button to remove DVD title.

Button functions in the DVD Menu

MENU	Move to the DVD main menu		Playback the next chapter
Subtitle	Subtitle change		Playback the previous chapter
Subaudio	Audio change	Vol +/-	Volume control
Angle	Angle change		Rewind with three steps
/Title 1	Move to the DVD title menu		Fast forward with three steps.
▲/▼/▶/◀	Move to submenus within the DVD menu		
	Mute On/Off		
INFO	File information		

4.2.2 Video CD Playback

1. Refer to DVD title playback (1~4).
2. Select the video file and press the <OK> button to play it.
3. Press the <Eject> button to remove the Video CD.

If the disc is a Video CD 2.0 format, select the menu via the numeric buttons on the remote control.

4.2.3 Audio CD Playback

1. Refer to DVD Title Playback (1~4).
2. Press <OK> to play one by one or move to the track you want and press <OK> to play it.
3. Press the <Eject> button to remove the Audio CD.



4.3 Audio File Playback

The TAB-36HD can play back the audio files in HDD, DVD, CD and USB devices.

The iTAB-36HD currently support MP3, WMA, OG, PCM, AC3, WAV and will support more file formats through ongoing firmware upgrades.

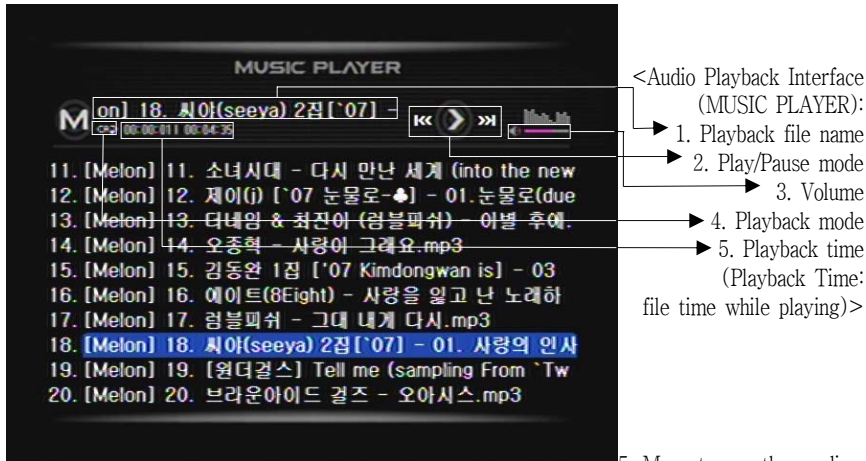
1. Select and click the device icon of the main menu which includes the audio files you want to playback.



2. Select the folder with the desired audio file.
3. After moving to folder, press the <OK> button to play the audio file.



4. Enjoy audio files via the audio playback interface (MUSIC PLAYER).

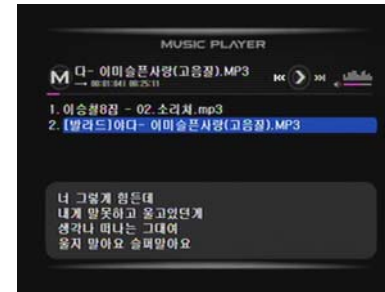


5. Move to an other audio file by pressing the <▲/▼> buttons on the remote and press the <OK> button on the remote control to play it.
6. Press the <Stop> button on the remote control to stop the playback.

▶ Audio Playback Mode
 Press the <-> button on the remote control to change the audio playback mode (four steps)

- CA: Repeat the files in the current folder.
- ⌘: Randomly play files in the current folder.
- : Play individual files in the current folder.
- CL: Repeat the file in playback.

7. The iTAB-36HD support Lyric files(LRC format). If the name of a music file and .lrc file are same, the lyrics window will be displayed automatically when the music is playing.



4.4 Photo File Playback

The iTAB-36HD can play back the photo (JPG) files in HDD, DVD, CD and USB devices.

The iTAB-36HD supports the JPG file format and a maximum of 80 million pixels.

1. Select and click the device icon on main menu which includes the photo files you want to playback.



2. Select the folder which includes the photo file.
3. After moving to the folder, press the <OK> button to open the photo file.
4. Press the <Stop> button to stop the photo playback and go to photo list.

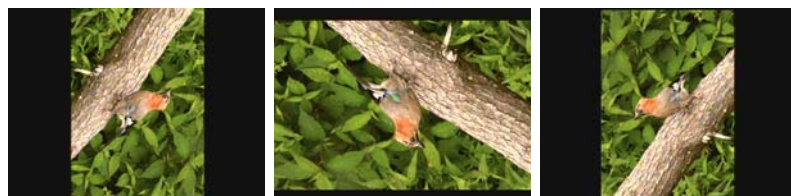
Button Functions in Photo View.

—	Start/Stop Slide Show
▶▶	Display next photo
◀◀	Display previous photo
Angle	Rotate the photo 90 degrees.
Zoom	Zoom In/Out by pressing the <◀/▶> buttons in Zoom mode.

5. Slide Show: Press the <-> Button on the remote control to start slide show of the photo files in the folder.



6. Photo Rotate: Rotate Vertical/Horizontal type pictures 90 degree by pressing the <Angle> button.



4.5 DVD file Ripping

The iTAB-36HD supports the playback of both authentic DVD and DVD backup titles, To play back a DVD backup title, first copy all related DVD Rip files for a movie title into one folder and play the VIDEO_TS.IFO file among them. If there are several DVD Rip titles, each DVD Rip title should be copied into a different folder.

1. Select and click the device icon in the main menu which includes the files you want to playback.
2. DVD Rip titles have ISO file type and unzipped file type. If the rip is an ISO format, press <OK> button on *.iso and find out the zip file list. Select VIDEO_TS.IFO file to play the file like a DVD title.



3. Move to the folder and press the <OK> button to playback.

If there is no VIDEO_TS.IFO file, it may not play back it normally.

Button Functions in DVD

MENU	Move to DVD Main Menu	▶▶	Playback Next Chapter
Subtitle	Subtitle Change	◀◀	Playback Previous Chapter
Subaudio	Audio Change	Vol +/-	Volume Control
Angle	Angle change		Rewind with three steps
1	Move to DVD title menu		Fast Forward with three steps.
▲/▼/▶/◀	Move to each menu in DVD menu		
⏸	Mute On/Off		
INFO	File information		

4.6 Playlist

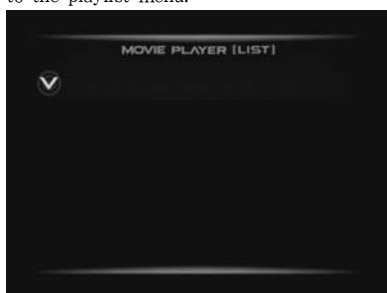
Making a playlist

What is a playlist?

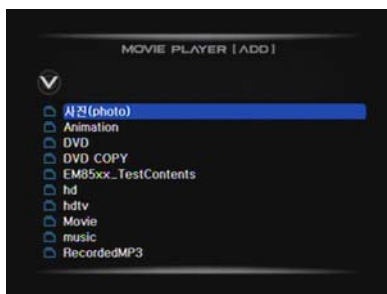
You can select and enjoy your own play list of media files in the HDD like Winamp player. Select the music files (MP3, WMA, OGG and WAV) and save them in the playlist.

Making a playlist

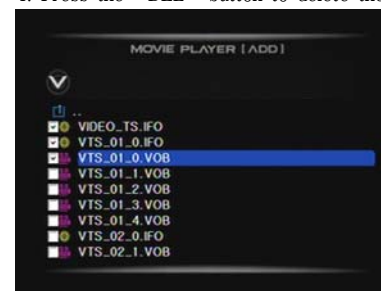
1. After checking the connection between the iTAB-36HD and TV, press the power button on the front panel of the iTAB-36HD.
2. In main menu of the iTAB-36HD, press the <List> button on the remote control and move to the playlist menu.



3. Press the <ADD> button on the remote control and move to the playlist edit menu.



4. Press the button to delete the file in the playlist.



5. Press the <ADD> button on the remote control and move to the play list menu.



6. Changing the Playlist Order.

In playlist menu, press the <Move> button and select the file first. Change the order by pressing the <▲/▼> buttons and confirm it by pressing the <OK> button.



7. After creating the playlist, press the <Playlist> button to save it and switch to the main menu.



4.7 Photo Slide Show

1. Press the <Setup> button or press the <OK> button on the 'SETUP' icon in the main menu.
2. In the 'iTAB-36HD SETUP' mode, move to the 'SETUP>ETC1>Slideshow Interval'



3. Move to the 'Slide show interval' by pressing the <▼> buttons.
4. Press the <▶> button on 'Slide Show Interval' and press the <OK> button on the desired time interval.



5. Press the <Setup> button to apply this setting and go back to the Main Menu.
6. In the Main Menu, move to the 'HDD' icon and press the <OK> button
7. Play back the photo file by pressing the <OK> button on the file and press the <-> button to start the Photo Slide Show.
8. Press the <- , Slide Show> button to stop the Slide Show.

Photo Slide Show with background music

1. Make the background music via Play List.
2. Move to the photo folder and start the Photo Slide Show by press the <-> button.
3. In the middle of photo slide show, press the <List> button and start the background music. Control the volume of the background music by pressing the <Vol+/-> button.

4.8 Using a USB Host

The iTAB-36HD features a USB host inside so that it can playback files in the devices such as USB memory and USB HDD.

1. After checking the connection between the iTAB-36HD and your TV, press the power button on the front panel of the iTAB-36HD.
2. When the Main Menu is displayed on your TV, install the USB memory/HDD.



3. 'USB' icon is activated on Main Menu. Move to the 'USB' icon and press the <OK> button to enter.



4. Playback the media files in the folder.

4.6 Using a Network

The iTAB-36HD can play back the media files in a PC through a local network. To do this, your PC needs to be on and the folder should be set using the 'folder sharing and authority setting' of PC.

To use the network share function, the iTAB-36HD and PC need to meet the following conditions.

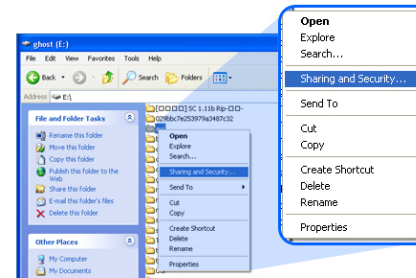
1. The folder sharing and authority setting of the PC
2. Using the same IP address and subnet mask.

1. Connect the LAN Cable to the LAN port on the back side of the iTAB-36HD.

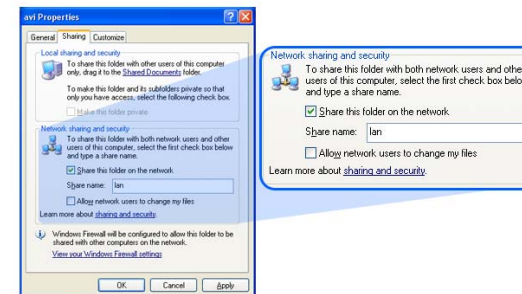


2. Select a folder which has media files in the PC and set up folder sharing.

2.1 Double-click 'my computer' and choose the folder you want to share. Right-click that folder and click 'Sharing and Security' in the menu.



2.2 Check 'Share this folder' on the network and type 'lan' as the shared name. (Please make sure to type 'lan' correctly.)

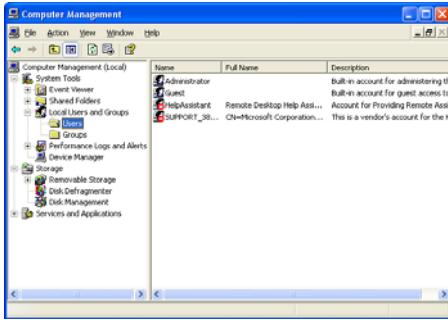


2.3 When it finishes the sharing work, the shared folder (with the hand icon) will be displayed like in the picture below.



2.4 Click 'Start' and 'Control panel' ► 'Administrative Tools ► 'Computer Management' ► 'Local Users and Groups' ► Click

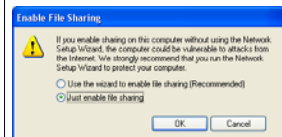
This is for Windows XP Pro. Windows XP Home users do not need to set up the authority setting.



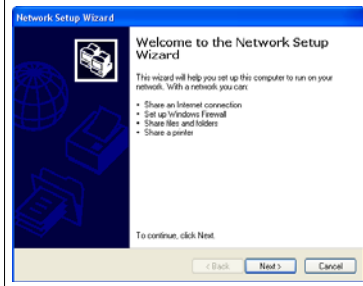
This menu will be showed one time when you set up for the first time.



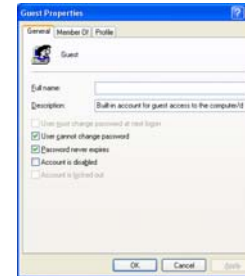
Click <OK>



After reading the message, start it according to the order.



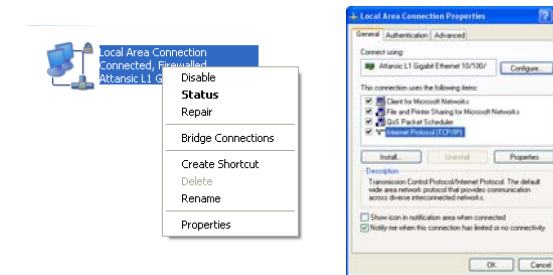
2.5 Check [User cannot change the password] and [Password never expires]. Please do not check 'Account disabled'



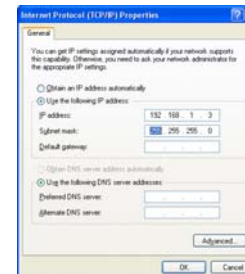
2.6 Click 'Control Panel' ► 'Network Connection' ► Right-click on 'local network connection' and select 'Properties'

1. If you cannot find 'Administration Tools' in 'Control Panel', please click "Switch to classic view" in upper-left bar.
2. If there are several local area connections, select the local area connection of the LAN card which is connected with the iTAB-36HD.

2.7 Double-click 'Internet Protocol (TCP/IP)' in the 'Local Area Connection 3 Properties'



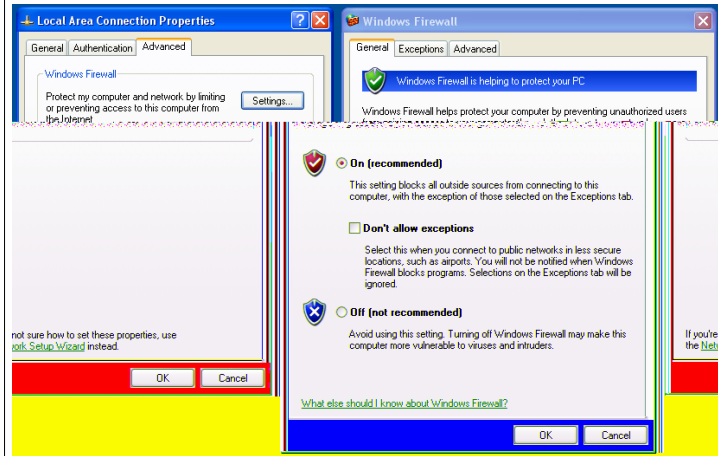
2.8 Check 'Use the following IP address' and input IP Address and Subnet Mask. After writing them all, press 'OK'. (Ex/ IP address: 192.168.1.3 / Subnet Mask: 255.255.255.0)



2.9. Turning off Windows Firewall.

Click 'Control Panel' ► 'Network Connection' ► Right-click on 'local network connection' and select 'Properties' ► Click the 'Advanced' tab and 'Settings..'. Select 'Off(not recommended)' and click 'OK'

If you use Service Pack 2, please refer to following pictures.



1. Click 'Setting' at 'Windows Firewall'

2. Check 'Off' and click 'OK'

3. Turn on the iTAB-36HD and input the LAN/Server IP through the SETUP menu.



4. IP setting means the IP to which the iTAB-36HD gets assigned.

If using an IP router/Hub, each device gets automatically assigned IP. Select 'Auto Setting'

If a server manager assigns an IP per device, set up the IP, subnet mask and gateway by 'manual setting'

When the setting is finished, press the <Setup> button to apply and switch to the main menu.



5. The 'LAN' icon in the main menu is activated after couple of seconds.

6. Play back the media files in the shared folder via the LAN.

4.7 Using wireless Network

iTAB-36HD can control and playback the media files in the shared folder via wireless network.

1. Connect the USB Dongle type (WiFi) Wireless LAN card to the USB host port on iTAB-36HD.
2. Refer to the above network setting for more on how to share the folder.
3. Turn on the iTAB-36HD and input LAN/server IP through the SETUP menu.



4. IP setting means the IP to which the iTAB-36HD gets assigned.

If using an IP router/hub, each device gets assigned an IP automatically. Select 'Auto Setting'

If a server manager assigns an IP per device, set up IP, subnet mask and gateway by 'Manual setting'

When the setting is finished, press the <Setup> button to apply.



5. When the iTAB-36HD recognizes the wireless LAN normally, 'LAN Type' menu is activated. After finishing the 'Server IP' setting and 'IP setting', select 'WIRELESS LAN' on the 'LAN Type' menu.



6. Select the AP for the iTAB-36HD among them and press the <OK> button to connect the AP. After connecting to the AP, AP list windows will disappear automatically.

If the AP list window does not disappear, it means that there is connection problem. In this occurs, register the wireless LAN in the AP or check the connection via the PC.



The iTAB-36HD can use a maximum of 11 channels of wireless LAN. If there are 12 or more AP channels, the AP list may not show the AP list for the iTAB-36HD. So, please use 11 or fewer channels on the AP.

7. When finishing the wireless LAN setting, press the <Setup> button and go to the Main Menu.
8. The 'LAN' icon in the Main Menu is activated after a couple of seconds.
9. Play back the media files in the shared folder via a wireless LAN.

The data transfer speed of Wireless LAN is slower than wired LAN. If an SD type movie or movies over 4MB bit rate, it may result in the display being cutoff during playback.

4.8 DVD Backup

The iTAB-36HD supports the backup and playback of authentic DVD titles. You can back up the authentic DVD title into HDD or USB memory. Even though your DVD is damaged, you can play back the DVD from the backup data with original quality.

1. Turn on the iTAB-36HD. Wait for the Main Menu to show up.
2. Insert the DVD title in the DVD ROM of the iTAB-36HD.
3. Move to the 'DVD' icon on the Main Menu.
4. Press <Copy> on the 'DVD' icon. The "DVD copy is set" message shows.



5. Move to the HDD or USB device where you want to make the copy and click the icon on the Main Menu.
6. Create new folder by pressing the <New Folder> button on the remote control. Input the folder name by using the numeric buttons on the remote control.



7. Move to the new folder.
8. Press the <Paste> button on the remote. You will see the message "Do you want to copy the original file into this folder?". 'Yes' and press 'OK' button.



9. Check the copy process of the file via 'Progress Bar'



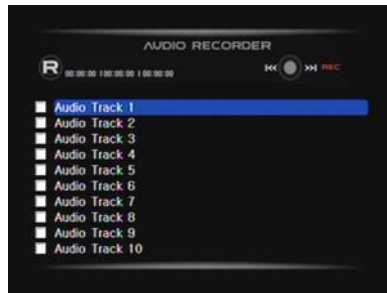
4.9 Audio CD MP3 Ripping

The iTAB-36HD supports MP3 ripping of authentic audio CD titles. You can back up authentic audio CD into HDD or USB memory. Even though your audio CD is damaged, you can playback the MP3 backup data of your audio CD from the HDD or USB memory.

1. Turn on the iTAB-36HD. Wait for the Main Menu show up.
2. Insert the audio CD title into DVD ROM of the iTAB-36HD.
3. Press the 'REC' icon on the Main Menu.



4. Go to 'AUDIO RECORDER'



5. Select the audio CD tracks you want to rip by pressing the 'OK' button on the remote control.



6. After finishing the track selection, press the <REC> button on the remote control. A pop-up message will show up. Select the device you want to save data to.



7. After selecting the device, MP3 ripping will start automatically and saved in the new folder. (The new folder name is created from the recordedMP3_000x in each device)



8. After finishing ripping the MP3s, press the 'Menu' button on the remote and try to playback the recorded data in the device.

The MP3 data will be saved in folder named 'RecordedMP3_000x'.

5. Additional Information

5.1 Q&A

Q I can't detect HDD after installation.

A. Please check the cables(power & data cable) to make sure if they are properly connected. If you are using Windows 98, you need to install a driver. Windows 98/SE/Me only recognizes HDDs formatted by FAT 32.

Q I can't play back Video files

Video files may not play back normally if they were formatted by GMC/QPEL type or if they have been damaged.

Q I can't see any subtitles during video file playback.

A The iTAB-36HD supports the 'smi' & 'smil' file extension for subtitle. To display the subtitle, the names of video file and subtitle file should be the same. Please check to ensure that if the names of the video and subtitle files are same.

Q No video signal

A.

1. You may have incorrectly connected the cables, Please double check to make sure the cable is correctly connected to your TV.
2. Incorrect TV Out/In mode. Please press the <TV-OUT> button on the remote control and select the correct TV out setting. TV Out setting of the iTAB-36HD is changed one by one by pressing <TV-OUT> button on the remote control.

If there is no remote controller, you can change it via the front control buttons of the iTAB-36HD.

* While pressing Stop, press the 'SETUP' button on the front panel of the iTAB-36HD and change the TV-OUT mode until you see the display.

Q The product does not turn on.

A

1. Check the angle and distance of the remote control. Also, check if there are any obstacles between the iTAB-36HD and the remote control.
2. Please check the batteries of the remote control to make sure they are inserted correctly.

Q The main body of the iTAB-36HD is too hot while playing back.

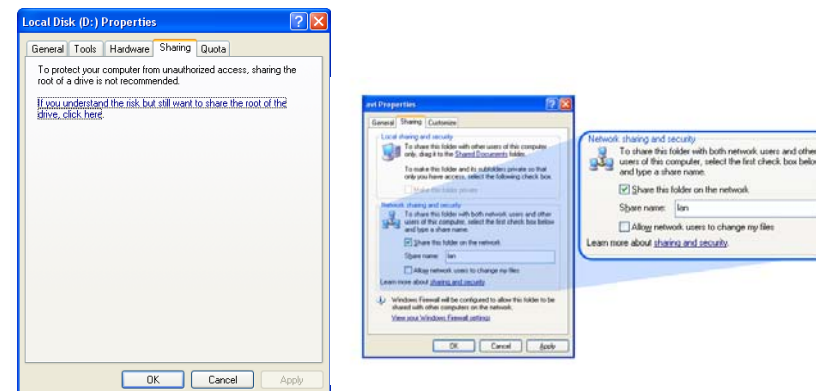
A. It is normal for the unit to heat up when in operation. You do not need to worry about it. You can adjust the heating via the fan speed.

Q How do I set up folder sharing by LAN connection?

A

1. Double-click 'my computer' and choose the folder you want to share. Right-click that folder and click 'Sharing and Security' in the menu.

2. Check 'Share this folder' on the network and type 'lan' as share name. (Please make sure to type 'lan' correctly.)



3. When it finishes the sharing work, the shared folder(with the hand icon) will be displayed like in the picture below.

