



ONE VISION, ONE MISSION

USER MANUAL



ORION

WWW.AZZATEK.COM

ORION

AZZA(USA)Technology Ltd.

670 Endeavor Circle
Brea, CA 92821
U S A
Phone: 714-990-5625
Fax: 714-990-5912
www.azzatek.com

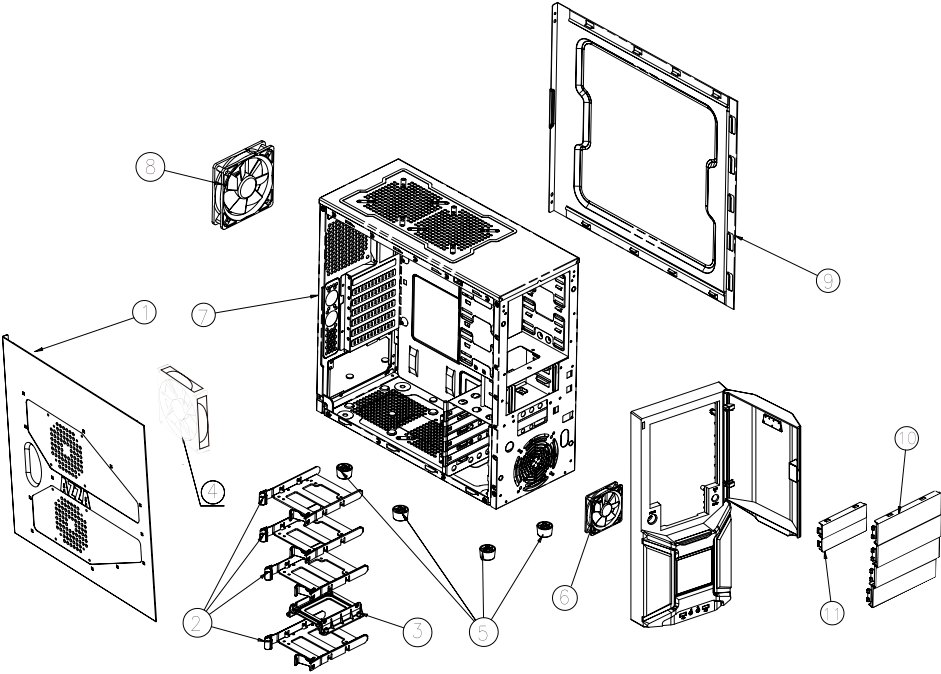
SPECIFICATIONS



Model Name	Orion
Model Number	CSAZ-201EVO/202EVO
Type	ATX Mid-Tower
Color	Black (exterior)/Black (interior)
Material	SECC Steel
Side Panel Window	Yes
With Power Supply	No
Motherboard Compatibility	ATX, Full ATX, Micro ATX
External 5.25" Drive Bays	4
External 3.5" Drive Bays	2
Internal 2.5" Drive Bays	4x 2.5"SSD, HDD Drive Bays
Internal 3.5" Drive Bays	4
Expansion	7
Front Ports	2xUSB 2.0, Audio, Mic
Cooling System	Side 120mm LED fan
	120mm black rear fan
	Front 80mm LED fan
Dimensions(HxWxD)	17.5" x 7.8" x 19.5"
	(445mm x 198mm x 495mm)
Feature	
Ultimate Cooling System	2x 120mm fans(option) located on top, to exhaust the hot air
Total support 6 Fans	1x 120mm fan located on the side, to intake the air
	1x 80mm fans in the front , to cool the HDD
	1x 120mm fan located in the rear, to exhaust the hot air
Support Water Cooling	support up to 2x120mm water cooling radiator
Support Longest VGA card	support up to 340mm (ATI 5970) VGA card
Bottom Mount Power Supply	Power Supply located on the bottom, two ways to install
	power supply; providing more efficient airflow
Cable Management	Cable is hidden behind the pre-drilled motherboard tray;better cable management and better air flow
Maximum Compatibility	Compatible with ATX, Micro ATX and all kinds of Nvidia, ATI long graphic card up to 340mm, and all kinds of water cooling system; support radiator up to size 2x120mm
Easy installation of CPU Cooler	A pre-cut hole for an easy installation of CPU cooler, eliminating the need to remove the motherboard
Screwless design for HDD	4x Easy Screwless HDD trays and 90 degree turn for HD cage for easy install HD, support 4 HD holder for 2.5" SSD and HD



Part List



1	Side Panel	8	Rear : 1X120mm Black Fan
2	3.5"HDD Holder	9	Right Side Panel
3	2.5"SSD Holder	10	3.5" Drive bay
4	Side Panel : 1X120mm LED Fan	11	5.25" Drive bay
5	Foot Support		
6	Front Panel : 1X80mm LED Fan		
7	Case		

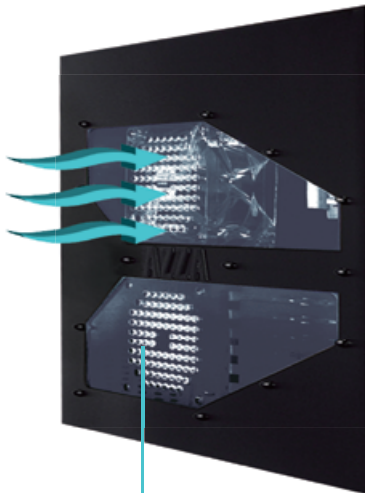


Aircooling System

ORION



–Rear Fan(Exhaust)
120X120X25mm Fan






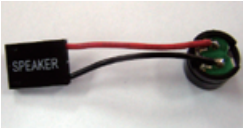



–Side Fan(Intake)
120X120X25mm
Blue LED Fan



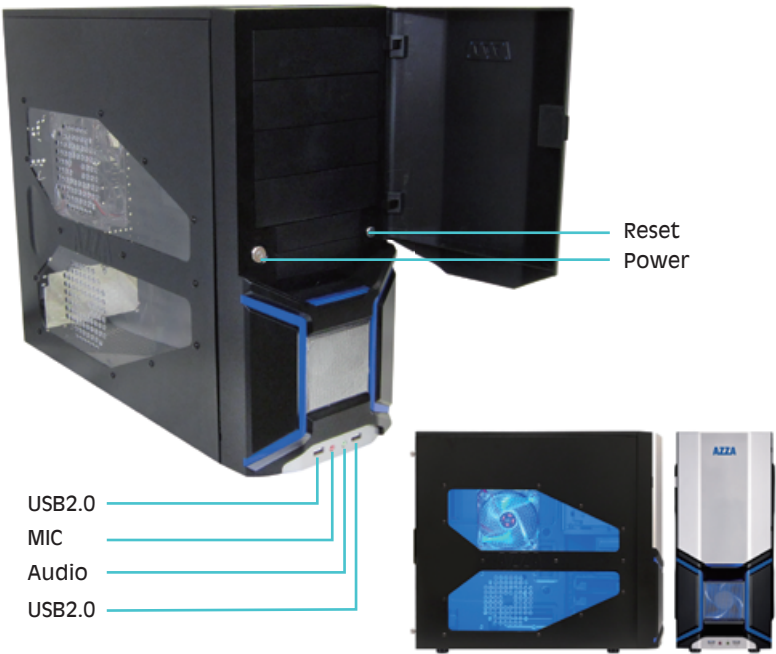
–Front Fan(Intake)
80X80X25mm
Blue LED Fan



Assembly kit

	9PCS		2PCS
screw for PCB		screw for dust shield	
	4PCS		1PCS
Screw for 2.5" SSD		speaker	
	2PCS		4PCS
screw for plastic boss		releasible Cable Tie	
	4PCS		
power supply screws			

Diagram



INSTALLATION INSTRUCTION

ORION

1_ Open The Side Panel



1.Remove the locking screws towards the back of the case on the left-hand-side.

2_ Remove The Front Panel and Top Panel



1.Hold the front panel by placing one hand on top of the case and one hand at the bottom.
2.Pull the bottom part front panel towards you.

3_ Install Power Supply



1.Place the power supply towards the bottom of the case.
2.Tighten the power supply with screw.
3.This case is designed in a way that the power supply unit can be installed either facing up or down.



4_5.25" Device and 3.5" Device Installation



- 1.Take off the front panel with the arrows shown on the diagram.
- 2.Push the 5.25" or the 3.5" mesh cover front from the inside out.



- 3.Put back the front panel and place the 5.25" or the 3.5" device into the respective drive slot.
- 4.Slide the 5.25" device into the respective bay and make sure the screw holes on the device matches with the marking on the 5.25" device cage.

5_3.5" HD Device Installation



- 1.Take the 3.5" HD holder out from the HD cage
- 2.Place your 3.5" HD inside the HD holder.
- 3.Push the 3.5" HD holder back to HD cage

6_2.5" SSD & HD Device Installation

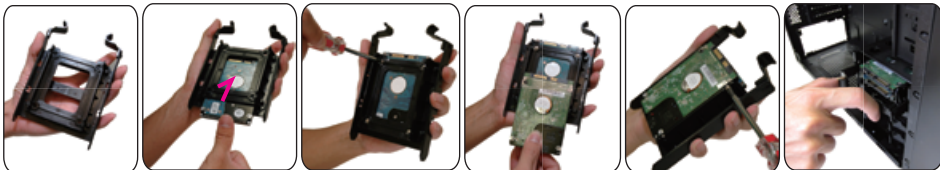
Option 1:



- 1.Put the 2.5" device on the 3.5" HD holder.
- 2.Secured the 2.5" device with screw.
- 3.Push the 3.5" HD holder back to HD cage.

Option 2:

* This holder can put two 2.5" SDD devices.



- 1.Take off the 2.5" device holder from 3.5" device.
- 2>Your 2.5" device can be screwed into this holder. All together you may have two 2.5" devices lock onto the same holder.
- 3.Secured the 2.5" device with screws, then put this 2.5" device holder back to 3.5" HD holder and secured it with screws.
- 4.Push the 3.5" HD holder back to HD cage.

7_Top Fans Installation



Place the fans beneath the top panel and screw the fans from outside the case.

8_Close The Side Panel



Closed the side panel along with those screws that we've remove from.



- Please refer to your motherboard user manual on the sections of "USB connector" and "Audio Connector."
- Please verify the pin definition before connecting the connectors to the motherboard.

USB Connector					
		Pin Definition		Wire Color	
USB1	GROUND		BLACK	USB ① Ground	
	+ D		GREEN	USB ① DATA +	
	-D		WHITE	USB ① DATA-	
	VCC		RED	USB Power① +5V	
USB2	GROUND		BLACK	USB ② Ground	
	+ D		GREEN	USB ② DATA +	
	-D		WHITE	USB ② DATA-	
	VCC		RED	USB Power② +5V	

AUDIO Connector(HD Audio)					
		Pin Definition			
PORT1 L	RED			BLACK	AUD GND
PORT1 R	GREEN			BLACK	BLACK PRESENCE#
PORT2 R	YELLOW			BROWN	SENSE1 RETURN
SENSE SEND	PURPLE			KEY	
PORT2 L	BLUE			ORANGE	SENSE2 RETURN

AUDIO Connector AC'97						
		Pin Definition				
Front Right Channel Audio Signal	MIC IN	RED			BLACK GROUND	Front Audio Ground
	MIC POWER	GREEN			NC	
Front Left Channel Audio Signal	R-OUT	YELLOW			YELLOW R-RET	Rear Right Channel Audio Signal
Front Microphone input Signal		NC			KEY	
Front Microphone Power	L-OUT	BLUE			BLUE L-RET	Rear Left Channel Audio Signal

Remark:

- 1.USB and Audio connectors have foolproof design · can only be inserted in one direction.
- 2.LED connectors have electrically positive and negative poles.