

USB to Printer Cable User's Manual V2.4

Congratulations on your purchase of the USB to Printer Cable adapter. This unique cable adapter allows you to attach your computer to most Printer printer device thru the USB port and get faster printing results.

Package Checklist

The USB to Printer Cable product package includes the following items:

- ◆ The USB to Printer Cable
- ◆ Driver Installation Diskette
- ◆ This User's Manual

Overview

The USB to Printer cable allows your PC to print to most Printer printer device connected through the USB port. Just plug the USB connector of the cable into the USB port of your PC and the other end into the Centronics connector of the Printer printer. USB (Universal Serial Bus) interface provides up to 12Mbps data throughput, so printing is much faster compared when connected to standard Printer port (150kbs). The USB to Printer cable also provides true plug-n-play and hot-plug capability - simply plug in the cable under the Windows operating system and the cable will be instantly detected.

Features


The USB to Printer cable provides the following features:

- ◆ Single chip (ASIC) USB to Printer communication
- ◆ Windows 98/Me and Windows 2000/XP Support
- ◆ Mac OS8/OS9 Support
- ◆ Universal Serial Bus Specification Rev. 1.1 compliant
- ◆ USB full speed communication and bus powered
- ◆ USB Printer Class Specification 1.0 compliant
- ◆ IEEE-1284 1994 (bi-directional Printer interface) specification compliant

System Requirements

Before you use the USB to Printer cable, make sure your computer is an IBM PC-compatible with the following

minimum system requirements:

- ◆ Intel-compatible 486DX-66 MHz CPU or higher
- ◆ One standard 4-pin USB port (with the symbol )
- ◆ Either the following operating systems:
 - Windows 98/Me or Windows 2000/XP



Driver Installation

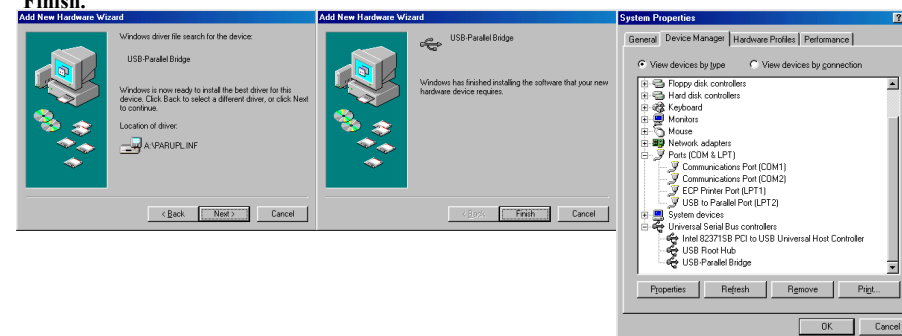
Notice : The driver of USB-Printer Bridge only supported for Win98/ Win98SE/ Win ME. About the driver for Win2000/XP, Microsoft has followed IEEE 1284 Specification to support a standard driver bundled in Win2000. When you plug in the cable, Win2000/XP will automatically detect the USB-Printer Bridge cable & install the bundled driver.

Follow the steps below on installing the USB to Printer cable software:

1. Power on your computer and make sure that the USB port is enabled and working properly.
2. Plug in the USB to Printer cable into the USB port and Windows will detect the **IEEE-1284** device and run the **Add New Hardware Wizard** to assist you in setting up the new device. Click **Next** to continue.
3. Insert the USB to Printer cable driver diskette into the floppy drive and click **Next** to continue. For Windows 98, click **Search for the best driver for your device** and click **to search driver from the floppy disk drive**.
4. Windows will detect the driver (**U2PAR.INF**) and shows the **IEEE-1284 Controller** device. Click **Next** to continue installation.



5. Click **Next** to continue and let Windows copy the needed files to your hard disk.
6. When Windows finished installing the software required for the new **USB-Printer Bridge** device, click **Finish**.

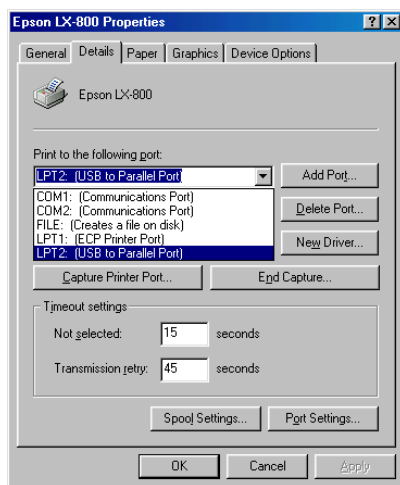


Setting Up the Printer Device

Follow the steps below on how to connect your printer to the USB port of your PC:

1. Turn off your printer. Plug the Centronics connector of the "USB to Printer cable" into your printer through a Printer cable. Turn on the printer afterwards.
2. Turn on your computer and plug in the USB connector of the USB to Printer cable into the USB port.

3. If you have already installed a printer device before, click **Start, Settings, Printers**. **Right-click the default-installed printer** and click on **Properties**. The Properties dialog box of the installed printer will appear on your screen.
4. Click the Details folder tab and change the printer port to **LPT2: (USB to Printer Port)**.



5. If you do not have a printer installed yet, click on **Start, Settings, Printers, Add Printer**. The **Add Printer Wizard** will start and assist you in installing a new printer device. Select the **printer manufacturer and model name** from the list provided by the wizard or use the printer driver diskette supplied with your printer.
6. When prompted which port the printer will use, click on **LPT2: USB to Printer Port**.
7. Follow the succeeding instructions to complete the installation and also run **Print Test Page** to see if it can print without problems.

Uninstalling the Driver Program

If in any case you want to remove the USB to Printer cable driver program, you can uninstall it by following the steps below:

1. Unplug the USB to Printer cable from your PC.
2. Run the **UNINST.EXE** program from the USB to Printer cable driver diskette and reboot the PC.

More Information

If you need more information please visit website:
<http://www.prolific.com.tw>

Disclaimer

Information in this document is subject to change without notice. The manufacturer does not make any representations or warranties (implied or otherwise) regarding the accuracy and completeness of this document and shall in no event be liable for any loss of profit or any other commercial damage, including but not limited to special, incidental, consequential, or other damages.

No part of this document may be reproduced or transmitted in any form by any means, electronic or mechanical, including photocopying, recording or information recording and retrieval systems without the express written permission of the manufacturer.

All brand names and product names used in this document are trademarks, or registered trademarks of their respective holders.

FCC Statement

This device generates and uses radio frequency and may cause interference to radio and television reception if not installed and used properly. This has been tested and found to comply with the limits of a Class B computing device in accordance with the specifications in Part 15 of FCC Rules. These specifications are designed to provide reasonable protection against such interference in a residential installation. However, there is no guarantee that interference will not occur in a particular installation. If this device does cause harmful interference to radio or television reception, which can be determined by plugging the device in and out, the user can to try to correct the interference by one or more of the following measures:

- Reorient or relocate the receiving antenna.
- Increase the separation between the device and receiver.
- Connect the computer into an outlet on a circuit different from that to which the receiver is connected.
- Consult the dealer or an experienced radio/TV technician for help.

Copyright ©2005 All rights reserved.