

2 MEGAPIXEL NETWORK IR BULLET CAMERA NG-BL321 QUICK GUIDE



Chapter 1. Install and Specification

1.1 Safety Cautions

- 1) This camera may be damaged by electrical and physical shock. Use regulated 12V DC, 1A power supply. Do not throw or drop it onto floor.
- 2) This camera can be used outdoor. But if it is used outdoor, it is required to use the sunvisor and avoid direct light from the sun. Do not use it under water.
- 3) In case it is installed at high location, be sure to mount securely to prevent the unit from falling below.
- 4) In case the unit fails, DO NOT try to disassemble the product. Contact or consult the distributor or an authorized technician for after-sales service. Warranty void for the product disassembled without an authorization from the distributor or an authorized technician.
- 5) All responsibility by using this unit is on the user.



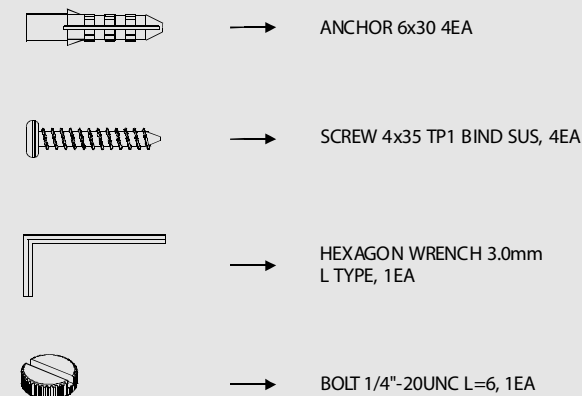
If the product is to be put out of operation definitively, take it to a local recycling plant for a disposal which is not harmful to the environment.

1.2 Package

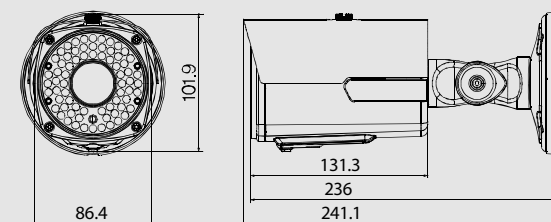


2

1.3 Accessories for installation

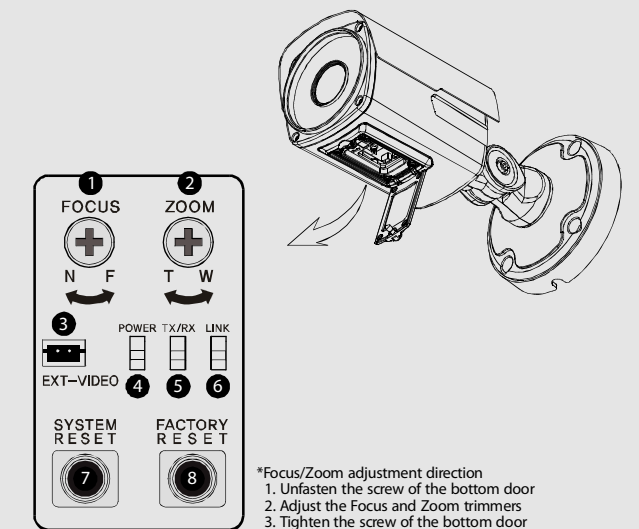


1.4 Dimension



3

1.5 Camera setup(Control board)

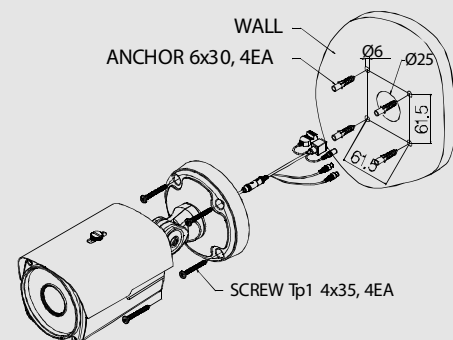


- ① FOCUS, ② ZOOM: Use a '+' type driver for adjusting focus and zoom. (In case of operation Focus/Zoom, don't put stress excessively.)
- ③ EXT. VIDEO: Extra video output terminal for installation. Plug your test monitor in here. The cable is option
- ④ POWER: Light would turn on when power is on.
- ⑤ Rx/Tx: Light would turn on when the user connect by the network.
- ⑥ LINK: Light would turn on when the LAN cable is connected to the unit.
- ⑦ SYSTEM RESET: Press the button to reset when the unit is not working normally.
- ⑧ FACTORY RESET: Turn on the power and wait 2 minutes. Press the button for 3 seconds to set the ID and Passwords for administration and IP setting values to the Factory default.
- [Reference] Please refer to Video Check in Chapter 2 and Chapter 5. System Setting regarding default value.(Refer to the manual in the CD.)

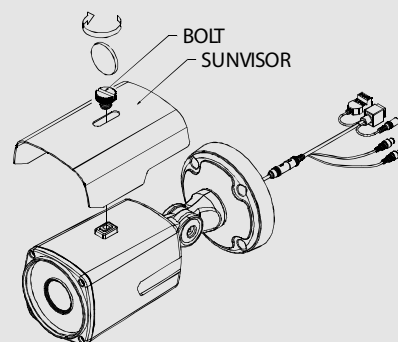
4

1.6 How To Install

1. Make a hole of Ø25mm in diameter for passing cable.
2. Drill four holes on the wall or ceiling and insert the anchors.
3. Arrange the cables and fix the screws.

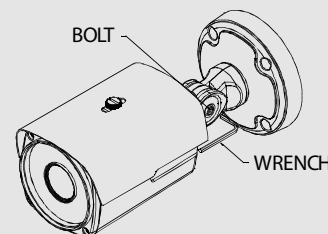


4. Attach the sunvisor and fix the sunvisor fixing bolt.



5

5. Loosen the bolt by using the 3mm wrench included.
6. Face the direction of the camera to monitor.
7. Tighten the bolt to complete adjustment.



1.7 Specification

1.7.1 Camera Specification

Item	Specification
Model No.	NG-BL621
Type	Megapixel network Day&Night IR camera
Image Sensor	1/2.8" SONY PROGRESSIVE SCAN EXMOR CMOS
Effective Pixels	1984(H) x 1225(V)
Resolution	1920x1080 / 1280x1024 / 1280x960 / 1280x720 / 1024x768 / 640x480 / 320x240
Scanning System	Progressive Scan
Min.Illumination	LED OFF : 0.01 Lux LED ON : 0 Lux(60M Range)
Alarm Input/Output	Input : 1, Output : 1
IR LED	70PCS
Lens	Vari-focal auto iris megapixel lens

6

1.7.2 Camera Function

Function	Specification
Privacy Zone	ON / OFF(6 Programmable Zones)
Day&Night	Auto / Night / Day
WDR	WDR(1 ~ 5), (Back Light, Front Light)
Electronic Shutter	Auto : 1/25 ~ 1/5,000(NTSC), 1/12.5 ~ 1/8,000(PAL) Suppress Rolling, Manual
Sense Up	Auto(1 ~ 14)
White Balance	Auto / Indoor / Outdoor / Fluorescent / User

1.7.3 Network Specification

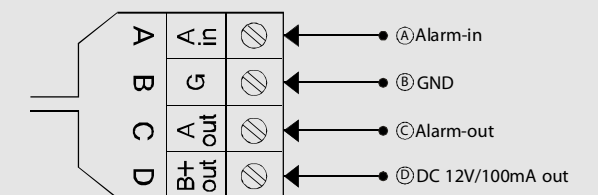
Classification	Item	Specification
Summary	OS	Embedded Linux
	Network Interface	RJ45 10/100BaseT, Ethernet
	Setting	By web browser
	Network Support	Leased Line, Cable Modem, Support Dynamic IP and Static IP, ADSL usable under Router
	Supported Protocol	TCP/IP, UDP/IP, RTP, RTSP, RTCP, NTP, HTTP, DHCP, FTP, SMTP, DNS, DDNS
	Security	User authentication
Image	PC OS	WINDOWS XP, WINDOWS VISTA, WINDOWS 7
	Web Browser	IE 7.0 or higher
	Compression	H.264, MPEG-4, MJPEG
	Resolution	1920x1080 / 1280x1024 / 1280x960 / 1280x720 / 1024x768 / 640x480 / 320x240
	Compression Rate	200 : 1(Typical)
	Frame Rate	Max. 30fps@1920x1080
Function	Bit Rate	64 ~ 9000kbps
	Simultaneous Access	Max. 10 users
	Video Recording	Recording in client PC with CMS or FTP Server
	Motion Detection	Support
	Privacy Zone	Support
	OSD	Support
	Alarm Input/Output	Support
	Dynamic IP	Support
	IP Router	Support
	DDNS	Support

7

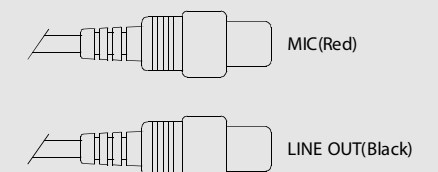
1.7.4 Electric Specification

Classification	Specification
Power Supply	Regulated 12V DC, PoE(Power over Ethernet) - IEEE802.3af
Current Consumption	Max. 1A(DC 12V) IR LED ON
Operation Temp.	-45 ~ 50
Preservation Temp.	-20 ~ 60
Dimension	86.4(W) x 101.9(H) x 131.3(D)mm
Weight	Approx. 1kg

1.7.5 Alarm Input/Output



1.7.6 Audio Input/Output



8

Item	Default(Basic setting)	Remarks
Network		
Static IP/Dynamic IP	Static IP	
IP Server Enable	Enable	
IP Address	192.168.130	
Gateway	192.168.1.1	
SubnetMask	255.255.255.0	
Web Connection Port	80	
RTSP Port	554	
RTP Port Range	5000 ~ 5999	
ID and Password		
Adminis trator ID/Password	admin/admin	
User ID/Password	root/root, guest/guest	
Domain of Related Server		
DDNS Server	iplinker.net	
Stream setting		
Stream 1	H.264 30fps@ (1920x1080)	rtsp://<ip address>:554/stream1
Stream 2	None	rtsp://<ip address>:554/stream2
Stream 3	None	rtsp://<ip address>:554/stream3
Video out*	OFF	After installation, deactivate it.

[Reference] In case to reset hardware and network setting, ID and password of user and Administrator will be automatically returned to the above default value.
*Frame rate can be affected by the external video output option.
So factory default is off. When you install the camera, enable this option. Then disable it after the installation.

Chapter 2. Installation and Video Check

2.1 Installation

On the assumption that User PC and the camera are used under static IP, and the camera is to be directly connected with User PC or Local Network.
The installation procedure is to be;
1) Connect the camera and PC with LAN Cable.
2) Power on camera.
Use regulated 12V DC, 1A
Use PoE(Power Over Ethernet) : The cable includes data and power, so it's easy to install the camera. So, you can save time to install and cost. When you connect the camera with PoE and DC adaptor, Only PoE is used.
3) Wait about 2 minute after power on camera, the system will be booted.

2.2 Network Setting and Video Check

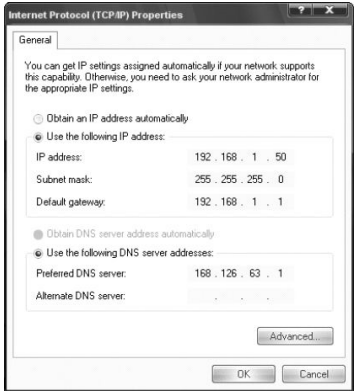
Default network setting value of the unit is to be;

IP Address : 192.168.130
Subnet Mask : 255.255.255.0
Gateway : 192.168.1.1

To connect the unit in user's PC, change the setting value of PC network environment.
<Caution> Before changing the setting value, please memorize the previous setting value on your PC.

2.2.1 Change the setting value of PC network environment

Set IP Address, Subnet Mask and Gate- way of user's PC with 192.168.150 / 255.255.255.0 / 192.168.1.1 as shown on below picture.



2.2.2 Connect the camera with web browser

Run web browser and input the default IP address(192.168.130) in URL line and press "Enter". Then, below picture is to be shown.



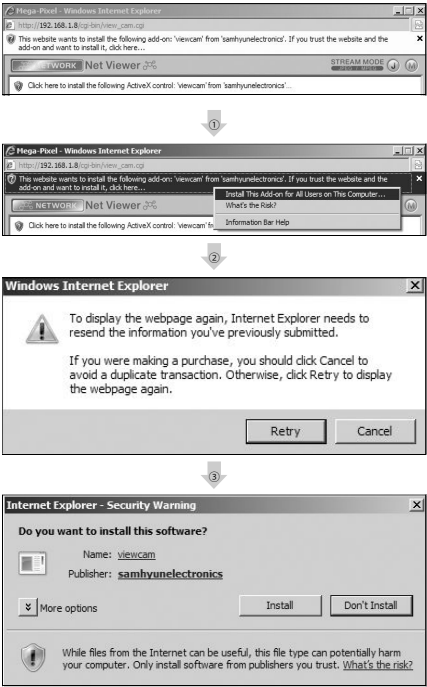
If the page does not open, Please refer to "Chapter 11 appendix" in the CD.

2.2.3 Input ID/Password

Shown the main page, input ID and Password and click on "Viewer" to see the video feed.(Default administrator's ID&Password is 'admin'.)
<Caution> Please change default value of ID/Password into new ones after the installation.
[Reference] Please refer to 5.3 Administrator's ID and Password Change regarding 'Change Administrator'.

2.2.4 Active- X auto installation

Click "Install" on the security certificate to load the Active- X control.
If you choose "Don't install", the web viewer would not work.



2.2.5 Complete the installation

Upon installation, Web Viewer appears and image of camera is to be seen.



Item	Description
①Stream selection	Select stream codec and resolution menu related to live- view was defined only by the admin. (H.264/ MPEG/MJPEG)
②Window size	Default size is 640X480. Adjust the screen to the optimal size(Recommendation : Select the same size with stream resolution)
③Connection/Disconnection	Connect or disconnect to the stream
④Recording	Saves the stream as a moving picture file in the .avi format
⑤Capture	Saves the snapshot as an image file in the .bmp format
⑥Saving path	Specify the file saving path
⑦Camera name	Display camera title
⑧Date	Display the date
⑨Time	Display current time
⑩Status Icon	Display the site information such as Day/Night, Motion, Alarm input/output
⑪Stream Info.	Display the stream information such as Audio and recording condition

MEMO